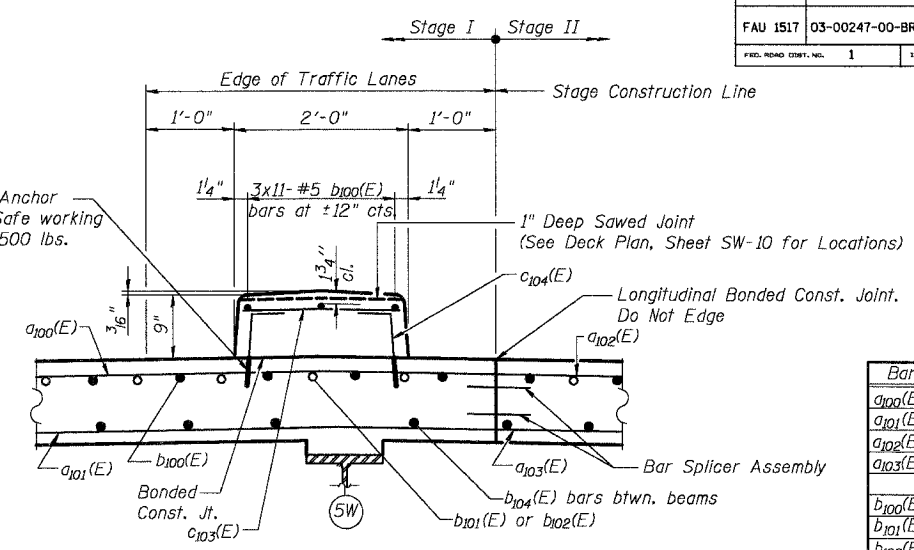
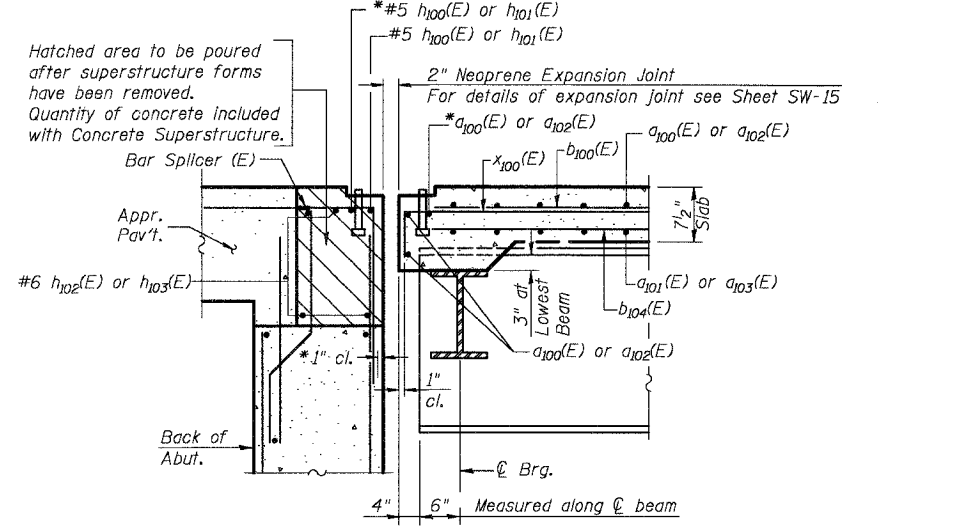


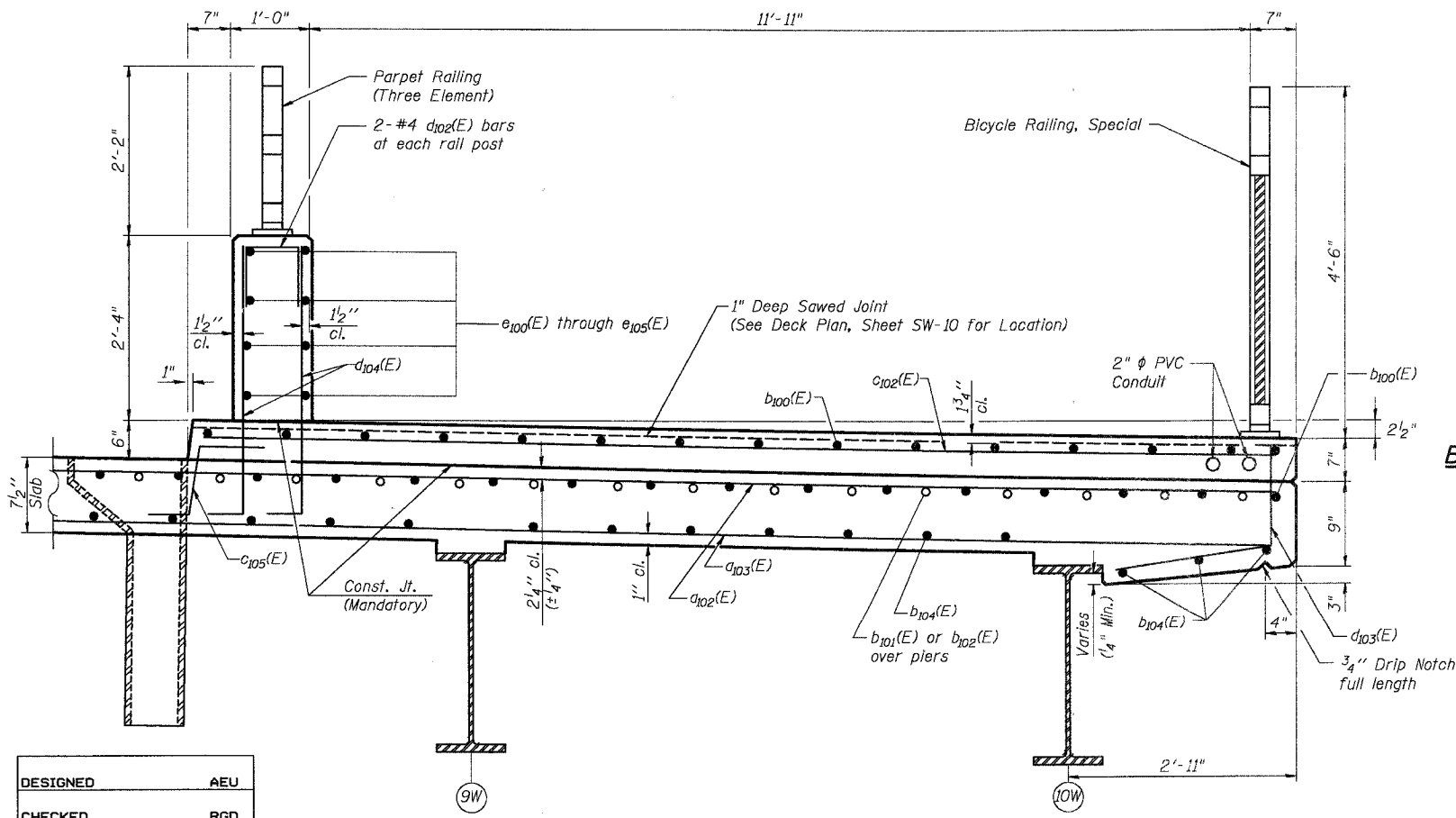
SECTION THRU SIDEWALK



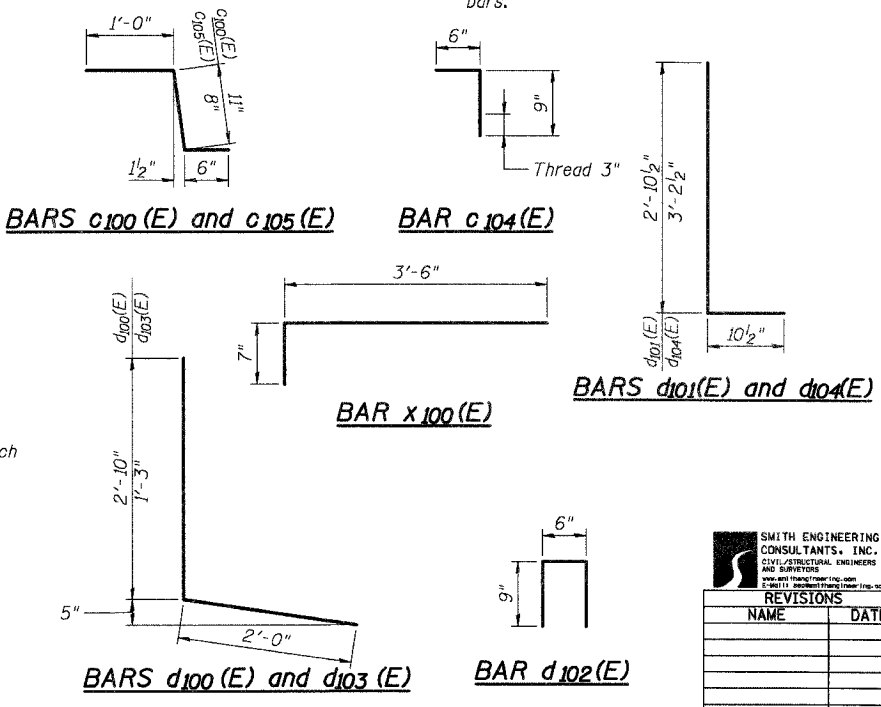
SECTION THRU MEDIAN



SECTION A-A



SECTION THRU SHARED USE PATH



SUPERSTRUCTURE BILL OF MATERIAL

Bar	No.	Size	Length	Shape
a100(E)	599	#5	34'-6"	—
a101(E)	450	#5	34'-6"	—
a102(E)	599	#5	38'-9"	—
a103(E)	450	#5	38'-9"	—
b100(E)	1133	#5	28'-11"	—
b101(E)	148	#6	41'-0"	—
b102(E)	74	#6	34'-6"	—
b104(E)	828	#5	26'-8"	—
b105(E)	128	#5	1'-6"	—
c100(E)	300	#5	2'-5"	—
c101(E)	300	#5	5'-8"	—
c102(E)	300	#5	13'-9"	—
c103(E)	300	#5	1'-8"	—
c104(E)	600	#5	1'-3"	—
c105(E)	300	#5	2'-2"	—
d100(E)	300	#4	4'-10"	—
d101(E)	300	#6	3'-9"	—
d102(E)	124	#4	2'-0"	—
d103(E)	300	#5	3'-3"	—
d104(E)	600	#6	4'-1"	—
d105(E)	8	#4	1'-8"	—
d106(E)	18	#6	8'-11"	—
d107(E)	6	#6	3'-10"	—
d108(E)	9	#6	2'-5"	—
d109(E)	6	#6	1'-8"	—
e100(E)	84	#4	15'-8"	—
e101(E)	48	#4	10'-6"	—
e102(E)	36	#4	18'-1"	—
e103(E)	24	#4	8'-6"	—
e104(E)	36	#4	17'-11"	—
e105(E)	12	#4	17'-2"	—
x100(E)	152	#5	4'-1"	—
Reinforcement Bars, Epoxy Coated			Pound	170,170
Concrete Superstructure			Cu. Yd.	738.2
Bridge Deck Grooving			Sq. Yd.	1,595
Protective Coat			Sq. Yd.	2,762

NOTES:
Work this sheet with sheets SW-10 and SW-12 through SW-14. See sheet SW-10 for Section A-A. For Parpet Railing and Bicycle Railing, Special details see Sheet SW-17. For Bar Splicer Assembly details see Sheet SW-23.

DESIGNED	AEU
CHECKED	RGD
DRAWN	WJH
CHECKED	NRF

SMITH ENGINEERING CONSULTANTS, INC.	
CIVIL, ELECTRICAL, MECHANICAL AND STRUCTURAL ENGINEERS AND SURVEYORS	
1000 N. WASHINGTON ST., SUITE 200, CHICAGO, ILL. 60610	
REVISIONS	
NAME	DATE

CITY OF AURORA

SUPERSTRUCTURE DETAILS I
ILLINOIS AVENUE
OVER THE FOX RIVER
SECTION NO. 03-00247-00-BR
KANE COUNTY
STRUCTURE NO. 045-6009

DATE 7-28-2006