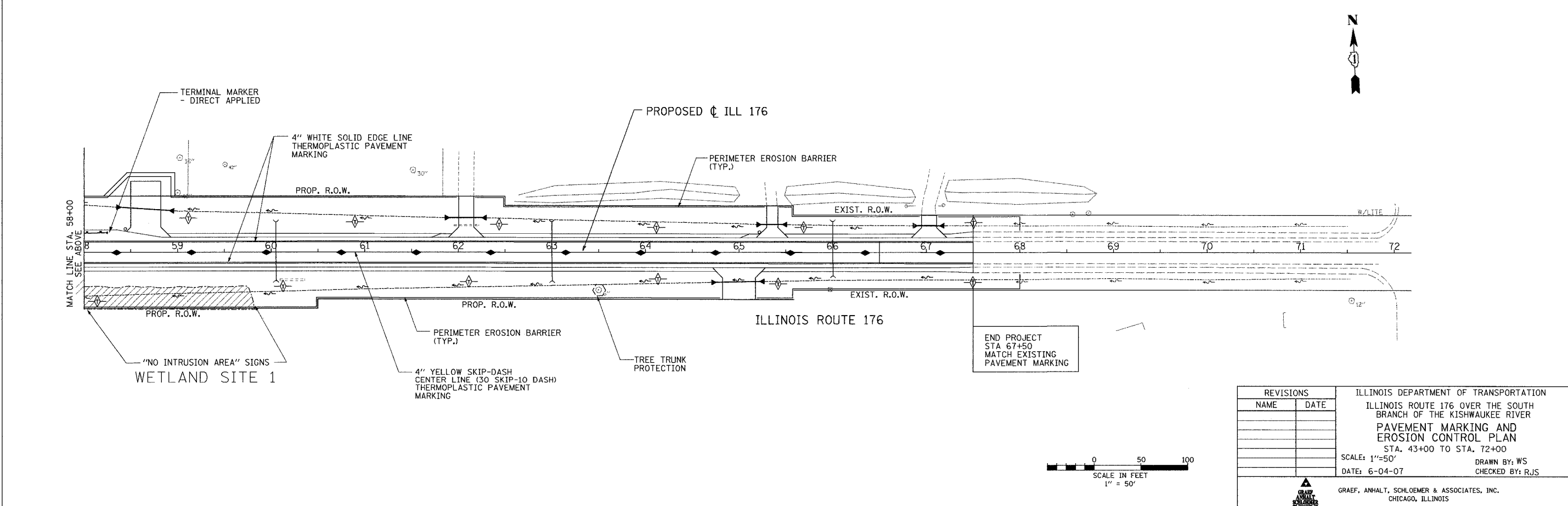
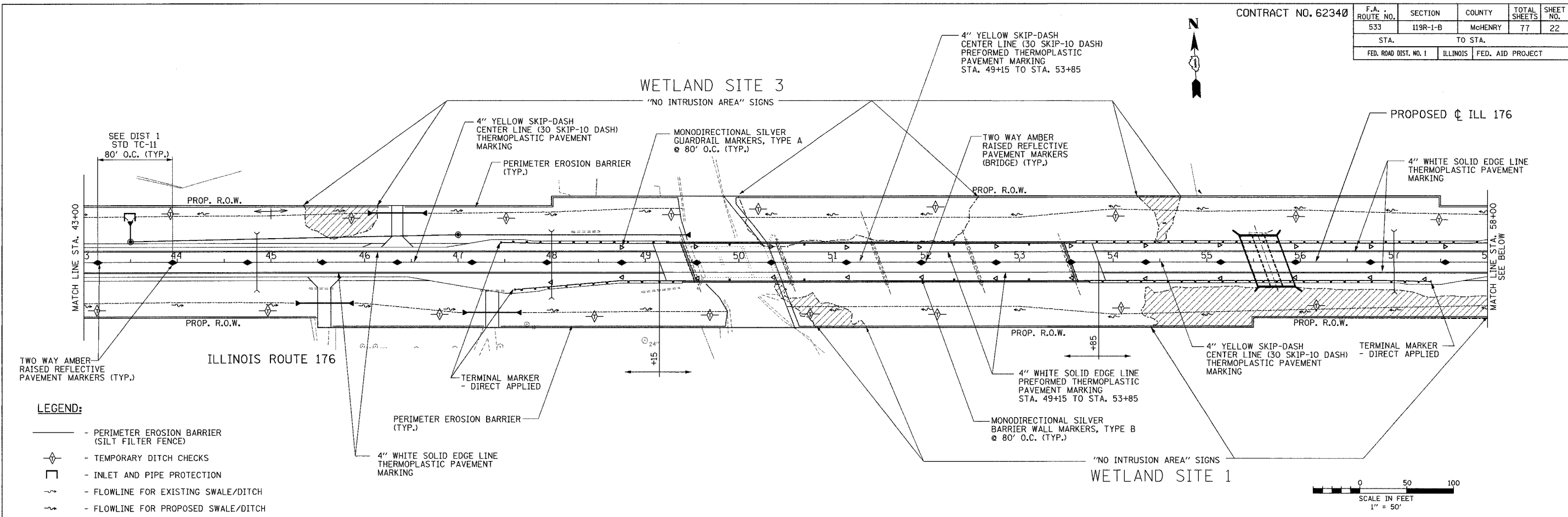


CONTRACT NO. 62340

F.A. ROUTE NO.	SECTION	COUNTY	TOTAL SHEETS	SHEET NO.
533	119R-1-B	McHENRY	77	22
STA.		TO STA.		
FED. ROAD DIST. NO. 1	ILLINOIS	FED. AID PROJECT		



REVISIONS		ILLINOIS DEPARTMENT OF TRANSPORTATION ILLINOIS ROUTE 176 OVER THE SOUTH BRANCH OF THE KISHWAUKEE RIVER PAVEMENT MARKING AND EROSION CONTROL PLAN STA. 43+00 TO STA. 72+00 SCALE: 1"=50' DATE: 6-04-07	DRAWN BY: WS CHECKED BY: RJS
NAME	DATE		

GRAEF, ANHALT, SCHLOEMER & ASSOCIATES, INC.
CHICAGO, ILLINOIS