

# INDEX OF SHEETS

1	COVER SHEET
2-3	SUMMARY OF QUANTITIES
4-23B	MAINTENANCE OF TRAFFIC PLANS & STANDARDS
24-30	APPROACH DETAILS
31-37	STRUCTURAL REPAIR PLANS (SN 039-0079)

## HIGHWAY STANDARDS

701001-02	OFF-RD OPERATIONS, 2L, 2W, MORE THAN 15' (4.5M) AWAY
701006-05	OFF-RD OPERATIONS, 2L, 2W, 15' (4.5M) TO 24" (600MM) FROM PAVEMENT EDGE
701201-04	LANE CLOSURE, 2L, 2W, DAY ONLY, FOR SPEEDS $\geq$ 45 MPH
701306-04	LANE CLOSURE, 2L, 2W, SLOW MOVING OPERATIONS DAY ONLY, FOR SPEED $\geq$ 45 MPH
701311-03	LANE CLOSURE 2L, 2W MOVING OPERATIONS - DAY ONLY
701321-17	LANE CLOSURE, 2L, 2W, BRIDGE REPAIR WITH BARRIER
701901-07	TRAFFIC CONTROL DEVICES
704001-08	TEMPORARY CONCRETE BARRIER
782006	GUARDRAIL AND BARRIER WALL REFLECTOR MOUNTING DETAILS
701400-09	APPROACH TO LANE CLOSURE, FREEWAY/EXPRESSWAY
701406-12	LANE CLOSURE, FREEWAY/EXPRESSWAY, DAY OPERATIONS ONLY

## NOTES:

ALL BORROW WASTE SITES MUST BE APPROVED BY THE DEPARTMENT PRIOR TO REMOVING ANY MATERIAL FROM THE PROJECT OR INITIATING ANY EARTHMOVING ACTIVITIES, INCLUDING TEMPORARY STOCKPILING OUTSIDE THE LIMITS OF CONSTRUCTION.

THE CONTRACTOR SHALL BE RESPONSIBLE FOR PROTECTING UTILITY PROPERTY DURING CONSTRUCTION OPERATIONS AS OUTLINED IN ARTICLE 107.31 OF THE STANDARD SPECIFICATIONS. THE CONTRACTOR SHALL CONTACT JULIE A MINIMUM OF 48 HOURS PRIOR TO COMMENCING WORK AT 800-892-0123.

NO MATERIALS, EQUIPMENT, VEHICLES OR OTHER HAZARDS SHALL BE WITHIN 2'-0" OF THE TEMPORARY CONCRETE BARRIER. EQUIPMENT THAT IS ACTIVELY WORKING WITH 2'-0" OF THE BARRIER WALL MAY BE ALLOWED FOR A SHORT DURATION, IF APPROVED BY THE ENGINEER AND THERE IS NOT ANOTHER METHOD TO COMPLETE THE WORK.

## TRAFFIC DATA:

FUNCTIONAL CLASSIFICATION  
MINOR ARTERIAL  
2017 ADT = 3,900  
EST. TRUCK % = 5%



FULL SIZE PLANS HAVE BEEN PREPARED USING STANDARD ENGINEERING SCALES. REDUCED SIZE PLANS WILL NOT CONFORM TO STANDARD SCALES. IN MAKING MEASUREMENTS ON REDUCED PLANS, THE ABOVE SCALES MAY BE USED.

J.U.I.E.  
JOINT UTILITY LOCATION INFORMATION FOR EXCAVATION  
1-800-892-0123  
OR 811

PROJECT ENGINEER: JEFFREY EHRHART, P.E. (312) 256-9090  
PROJECT MANAGER: MAHMOUD ETEMADI, P.E. (815) 284-5359

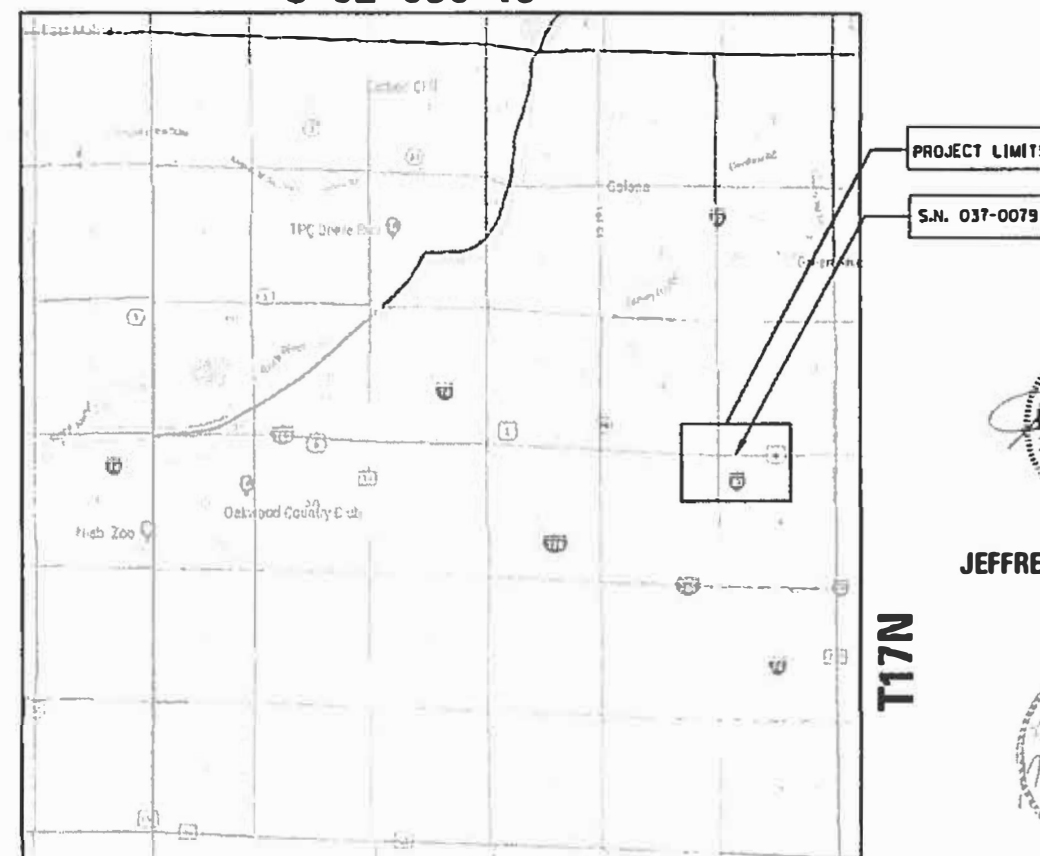
CONTRACT NO. 64M78

# STATE OF ILLINOIS DEPARTMENT OF TRANSPORTATION DIVISION OF HIGHWAYS

## PROPOSED HIGHWAY PLANS

FAP 138 (US 6) OVER FAI 80  
(I-80) SECTION D2 (37-1HB-2)BDR  
BRIDGE REHABILITATION  
S.N. 037-0079  
PROJECT NHPP-9FGX(287)  
HENRY COUNTY

C-92-030-18



LOCATION MAP  
N.T.S.  
R1E 4th PM  
T17N

GROSS LENGTH = 2000 FT. = 0.38 MILE  
NET LENGTH = 2000 FT. = 0.38 MILE



JEFFREY C. EHRHART, P.E.



MICHAEL MILLER, P.E.  
FOR DRAWINGS 4-23

WYNDALCO  
INTERPRISES

F.A.I. RTE.	SECTION	COUNTY	TOTAL SHEETS
80	02 (37-1HB-2)BDR	HENRY	37
ILLINOIS CONTRACT NO. 64M78			1

\*37 + 2 = 39 TOTAL SHEETS

D-92-023-18



LOCATION OF SECTION INDICATED THUS: -

STATE OF ILLINOIS  
DEPARTMENT OF TRANSPORTATION  
DIVISION OF HIGHWAYS

SUBMITTED 7-30-18  
DEPUTY DIRECTOR OF HIGHWAYS, REGION ENGINEER  
ENGINEER OF DESIGN AND ENVIRONMENT  
3

PRINTED BY THE AUTHORITY  
OF THE STATE OF ILLINOIS

SUMMARY OF QUANTITIES				URBAN	
				BRIDGE	ROADWAY
CODE NAME	ITEM	UNIT	TOTAL QUANTITY	0059	0005
				037-0079	
70100450	TRAFFIC CONTROL AND PROTECTION, STANDARD 701201	E SUM	1		1
70100460	TRAFFIC CONTROL AND PROTECTION, STANDARD 701306	E SUM	1		1
70100700	TRAFFIC CONTROL AND PROTECTION, STANDARD 701406	L SUM	1		1
70106500	TEMPORARY BRIDGE TRAFFIC SIGNALS	EACH	1	1	
70300220	TEMPORARY PAVEMENT MARKING - LINE 4"	FOOT	4,300		4,300
70400100	TEMPORARY CONCRETE BARRIER	FOOT	537.5		537.5
70400200	RELOCATION TEMPORARY CONCRETE BARRIER	FOOT	537.5		537.5
70600250	IMPACT ATTENUATORS, TEMPORARY (NON-REDIRECTIVE), TEST LEVEL 3	EACH	2		2
70600350	IMPACT ATTENUATORS, RELOCATE (NON-REDIRECTIVE), TEST LEVEL 3	EACH	2		2
78001110	PAINT PAVEMENT MARKING - LINE 4"	FOOT	4,317		4,317
X0327980	PAVEMENT MARKING REMOVAL - WATER BLASTING	SQ FT	4,317		4,317
X5030250	BRIDGE DECK GROOVING (LONGITUDINAL)	SQ YD	617.7	617.7	
X7030005	TEMPORARY PAVEMENT MARKING REMOVAL	SQ FT	4,300		4,300
Z0001899	JACK AND REMOVE EXISTING BEARINGS	EACH	12	12	
Z0001903	STRUCTURAL STEEL REMOVAL	POUND	1180	1180	
Z0001905	STRUCTURAL STEEL REPAIR	POUND	1360	1360	
Z0006014	BRIDGE DECK LATEX CONCRETE OVERLAY, 2 1/2"	SQ YD	830.3	830.3	
Z0012130	BRIDGE DECK SCARIFICATION, 3/4"	SQ YD	830.3	830.3	
Z0016001	DECK SLAB REPAIR (FULL DEPTH, TYPE I)	SQ YD	25	25	
Z0016002	DECK SLAB REPAIR (FULL DEPTH, TYPE II)	SQ YD	85	85	
Z0029090	DIAMOND GRINDING (BRIDGE SECTION)	SQ YD	857.9	857.9	



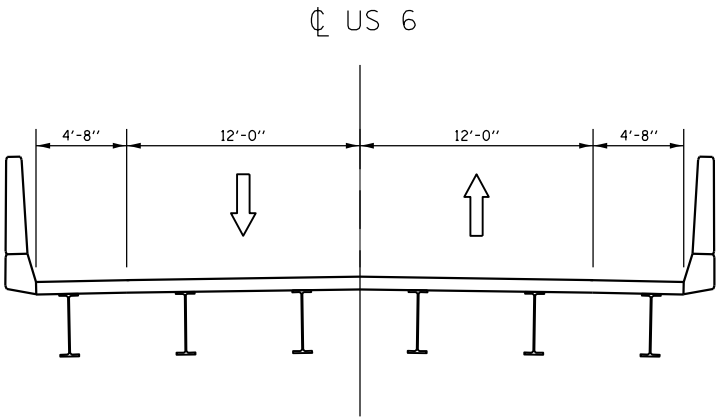
FILE NAME : Z:\P-cj\metals\2016-0802\110 Work Order 9\0264M78-SHT-5002.dgn

CONSTRUCTION STAGING GENERAL NOTES

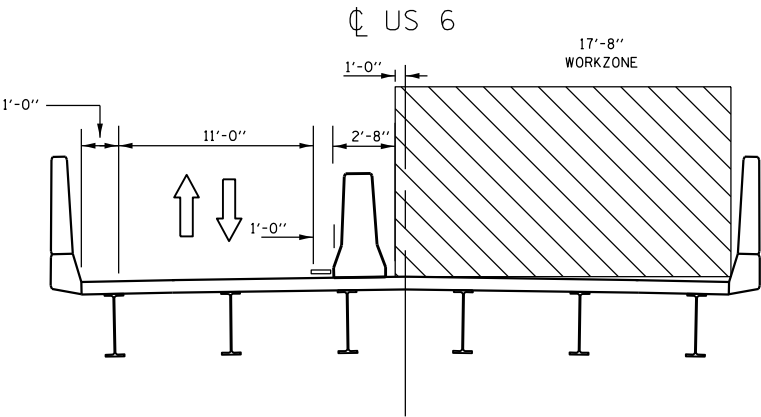
1. ALL SIGNING MUST BE IN ACCORDANCE WITH THE APPLICABLE PROVISIONS OF THE STATE OF ILLINOIS "STANDARD SPECIFICATIONS FOR ROAD AND BRIDGE CONSTRUCTION" ADOPTED APRIL 1, 2016, THE DETAILS IN THESE PLANS, THE LATEST EDITION OF THE IDOT BUREAU OF DESIGN AND ENVIRONMENT HIGHWAY STANDARDS AND THE LATEST EDITION OF THE "MANUAL ON UNIFORM TRAFFIC CONTROL DEVICES".
2. LONGITUDINAL DIMENSIONS SHOWN ON THESE PLANS MAY BE ADJUSTED TO FIT FIELD CONDITIONS AS DIRECTED BY THE ENGINEER.
3. THE CONTRACTOR MUST BE RESPONSIBLE FOR ENSURING THAT ALL BARRICADES, SIGNS, LIGHTS AND OTHER DEVICES INSTALLED ARE IN PLACE AND OPERATING 24 HOURS EACH DAY INCLUDING SUNDAYS AND HOLIDAYS DURING THE TIME THIS CONSTRUCTION IS IN EFFECT.
4. ALL EXISTING SIGNING THAT IS NOT APPLICABLE WHILE THE CONSTRUCTION IS IN EFFECT MUST BE COMPLETELY COVERED BY THE CONTRACTOR.
5. THE SIZES OF ALL SIGNS NOT SPECIFIED IN THESE PLANS MUST BE AS REQUIRED BY THE MANUAL ON UNIFORM TRAFFIC CONTROL DEVICES.
6. AS A MINIMUM, ALL AMBER FLASHING LIGHTS THAT ARE REQUIRED MUST MEET THE REQUIREMENTS FOR TYPE A - LOW INTENSITY FLASHING LIGHTS IN ARTICLE 702.04 OF THE STANDARD SPECIFICATIONS. ALL LIGHTS SHALL OPERATE DURING HOURS OF DARKNESS. ONLY LIGHTS THAT HAVE BEEN APPROVED BY THE ILLINOIS DEPARTMENT OF TRANSPORTATION MUST BE USED.
7. PROPOSED MAINTENANCE OF TRAFFIC SIGNING MUST BE COVERED OR REMOVED WHEN NOT REQUIRED DURING A SPECIFIC STAGE OF CONSTRUCTION.
8. SEE SUGGESTED MAINTENANCE OF TRAFFIC PLAN FOR ADDITIONAL SIGNING.
9. CHANGEABLE MESSAGE SIGNS TO BE PROVIDED AT LOCATIONS SHOWN ON PLANS OR AS DIRECTED BY THE ENGINEER.
10. THE CONTRACTOR MUST CONDUCT HIS WORK IN SUCH A MANNER THAT EMERGENCY VEHICLES WILL HAVE ACCESS TO THE AREA AT ALL TIMES.
11. THE CONTRACTOR MUST NOTIFY THE IDOT BUREAU OF TRAFFIC AS REQUIRED 72 HOURS IN ADVANCE OF BEGINNING WORK (815) 284-5474.
12. SIGN SPACING SHALL BE PER IDOT STANDARD 701321.
13. CONTRACTOR TO BE IN ACCORDANCE WITH IDOT STANDARD 701321.

TOTAL MAINTENANCE OF TRAFFIC – SUMMARY OF QUANTITIES

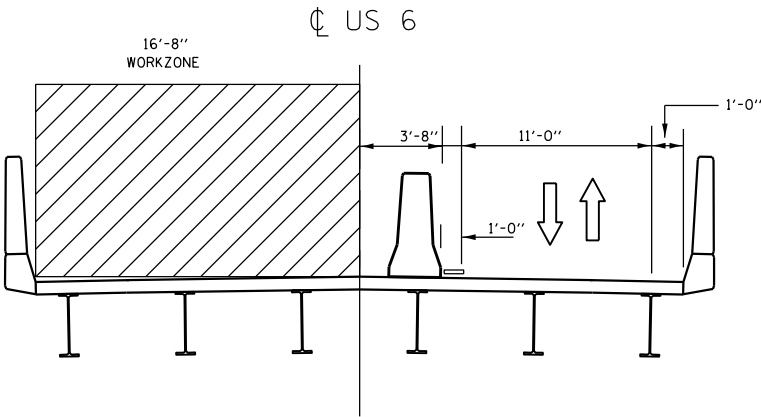
PAY ITEM	DESCRIPTION	UNIT	QUANTITY
70100405	TRAFFIC CONTROL AND PROTECTION, STANDARD 701321	EACH	1
70100450	TRAFFIC CONTROL AND PROTECTION, STANDARD 701201	EACH	1
70100460	TRAFFIC CONTROL AND PROTECTION, STANDARD 701306	EACH	1
70106500	TEMPORARY BRIDGE SIGNALS	EACH	1
70300220	TEMPORARY PAVEMENT MARKING - LINE 4"	FOOT	4300
X7030005	TEMPORARY PAVEMENT MARKING REMOVAL	FOOT	4300
70400100	TEMPORARY CONCRETE BARRIER	FOOT	537.5
70400200	RELOCATION TEMPORARY CONCRETE BARRIER	FOOT	537.5
70600250	IMPACT ATTENUATORS, TEMPORARY (NON-REDIRECTIVE), TEST LEVEL 3	EACH	2
70600350	IMPACT ATTENUATORS, RELOCATE (NON-REDIRECTIVE), TEST LEVEL 3	EACH	2
78001110	PAINT PAVEMENT MARKING - LINE 4"	FOOT	4317
X0327980	PAVEMENT MARKING REMOVAL - WATER BLASTING	FOOT	4317
70100700	TRAFFIC CONTROL AND PROTECTION,STANDARD 701406	L SUM	1



STRUCTURE NO. 037-0079 OVER ROUTE 80 (LOOKING EAST)  
EXISTING TYPICAL  
STA. 46+75 TO STA. 53+25



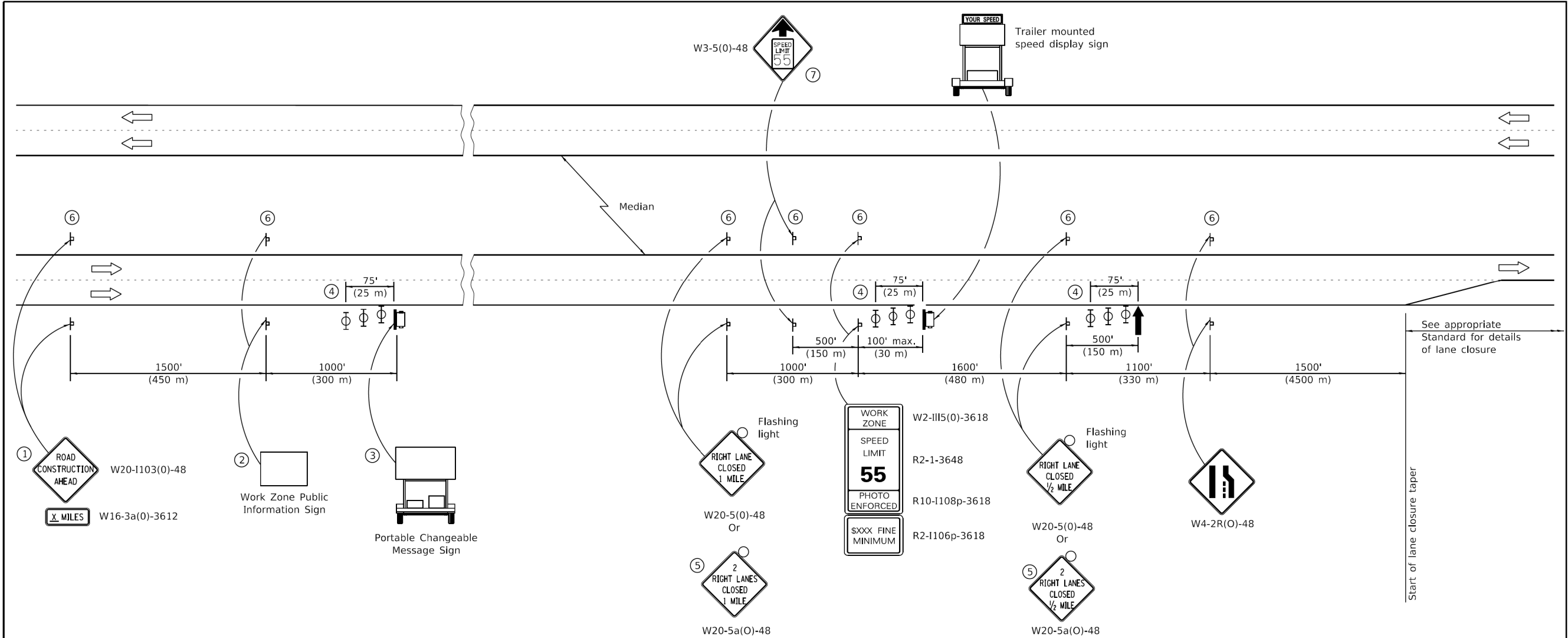
STRUCTURE NO. 037-0079 OVER ROUTE 80 (LOOKING EAST)  
STAGE 1 CONSTRUCTION TYPICAL  
STA. 46+75 TO STA. 53+25



STRUCTURE NO. 037-0079 OVER ROUTE 80 (LOOKING EAST)  
STAGE 2 CONSTRUCTION TYPICAL  
STA. 46+75 TO STA. 53+25

MODEL: D:\data\1031110240\shared\Project\2016\002510 Work Order 2\Submittal\Addendum 10\_31\_18\0255507-cp-General Notes.dgn  
FILE NAME: 1031110240\shared\Project\2016\002510 Work Order 2\Submittal\Addendum 10\_31\_18\0255507-cp-General Notes.dgn

FILE NAME = \\10.110.240\shared\Projects\2016-0002\110 Work Order 9\Submittal\Addendum 10.31.18\10264M78-SHT-701400.dgn



**SYMBOLS**

- ↑ Arrow board
- ☐ Trailer mounted sign
- ▮ Sign
- ⊕ Type II barricade, drum, or vertical barricade with monodirectional flashing light

- The Road Construction Ahead sign shall be located 3 to 5 miles in advance of the project limits.
- The message and size of the Work Zone Public Information Sign shall be as specified by the Department.
- The message board shall be used to display status of lanes within the project. The primary messages shall be:  
"Right Lane Closed" / " x Miles Ahead"  
"Left Lane Closed" / " x Miles Ahead"  
"All Lanes Open"
- Three, Type II barricades, drums, or vertical barricades at 25' (8 m) centers.
- This sign shall be used when 2 lanes are closed.
- This sign shall be omitted when median width is less than 10' (3 m).
- This sign shall only be used if the existing speed limit is greater than 65 mph.

**GENERAL NOTES**

This standard is used where at any time a lane is closed on a freeway/expressway. When the left lane is closed, LEFT LANE CLOSED signs shall be substituted for the RIGHT LANE CLOSED signs.

The first two signs and the message board are stationary.

The last four signs and arrow board shall be moved as necessary to maintain the required distance from the start of the lane closure taper(s).

All dimensions are in inches (millimeters) unless otherwise shown.

Illinois Department of Transportation	
PASSED January 1, 2017	ISSUED 4-1-04
ENGINEER OF SAFETY PROG. AND ENGINEERING	
APPROVED January 1, 2017	
ENGINEER OF DESIGN AND ENVIRONMENT	

DATE	REVISIONS	APPROACH TO LANE CLOSURE, FREEWAY/EXPRESSWAY
1-1-17	Added trailer mounted speed display sign. Changed device spacing and note (4).	
1-1-15	Revised '2 RIGHT LANES	STANDARD 701400-09
	CLOSED X MILE' sign number.	

19081 Old LaGrange Rd, Ste. 106  
Mokena, IL 60448  
312.256.9090

USER NAME = Michael	DESIGNED - MJL	REVISED 1 10/31/2018 MJL
	CHECKED - JCE	REVISED
PLOT SCALE =	DRAWN - MJL	REVISED
PLOT DATE = 10/31/2018	CHECKED - JCE	REVISED

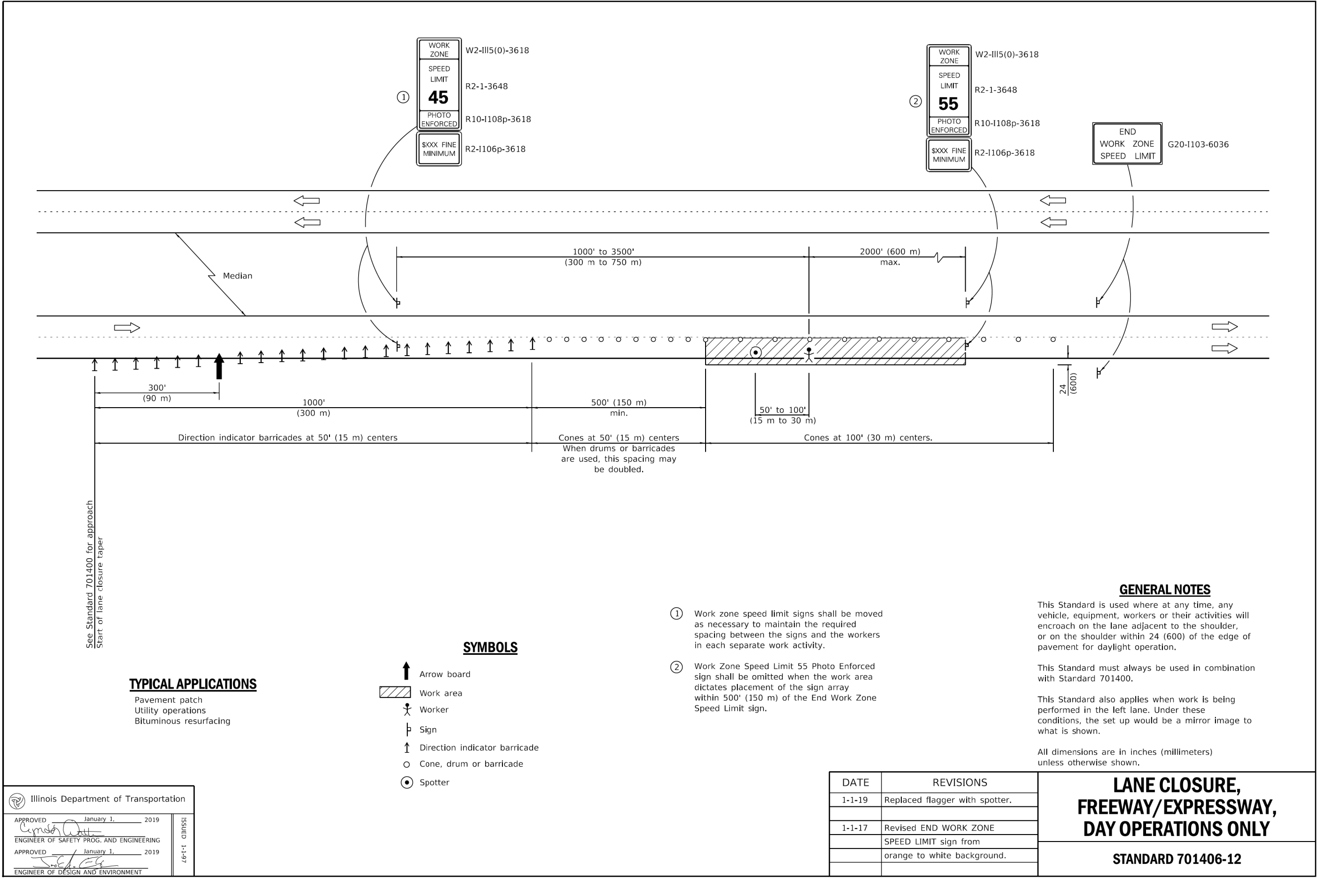
STATE OF ILLINOIS  
DEPARTMENT OF TRANSPORTATION

STANDARDS

SHEET NO. 1 OF 1 SHEETS

F.A.I RTE.	SECTION	COUNTY	TOTAL SHEETS	SHEET NO.
80	D2 (37-IHB-2)BDR	HENRY	37	23A
CONTRACT NO. 64M78				
ILLINOIS FED. AID PROJECT				

FILE NAME = \\10.110.240\shared\Projects\2016-0002\110 Work Order 9\Submittal\Addendum 10\_31\_18\10264M78-SHT-701406.dgn



19081 Old LaGrange Rd, Ste. 106  
Mokena, IL 60448  
312.256.9090

USER NAME = Michael	DESIGNED - MJL	REVISED 1 10/31/2018 MJL
	CHECKED - JCE	REVISED
PLOT SCALE =	DRAWN - MJL	REVISED
PLOT DATE = 10/31/2018	CHECKED - JCE	REVISED

STATE OF ILLINOIS  
DEPARTMENT OF TRANSPORTATION

STANDARDS

SHEET NO. 1 OF 1 SHEETS

F.A.I RTE.	SECTION	COUNTY	TOTAL SHEETS	SHEET NO.
80	D2 (37-1HB-2)BDR	HENRY	37	23B
CONTRACT NO. 64M78				
ILLINOIS FED. AID PROJECT				

1 ADDED SHEET 10/31/18