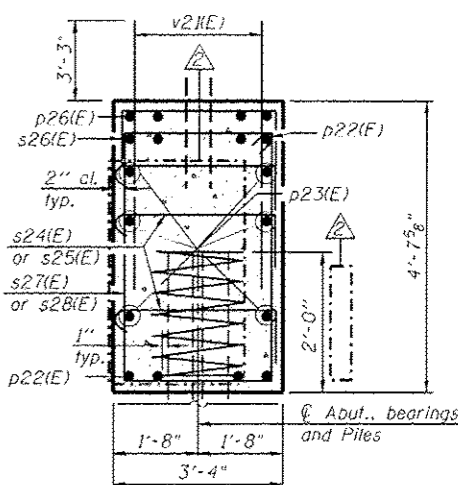
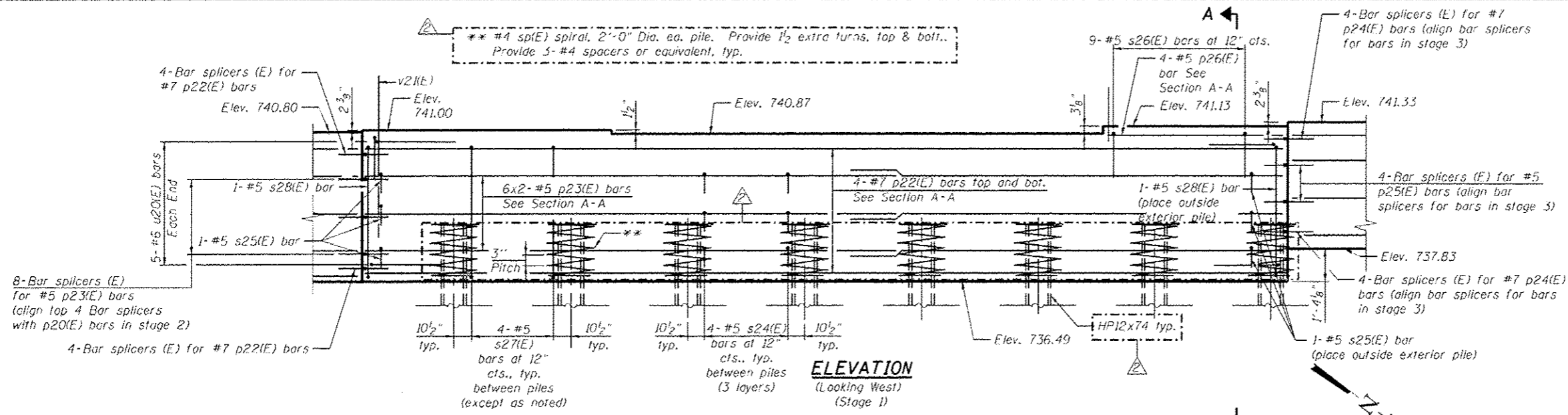
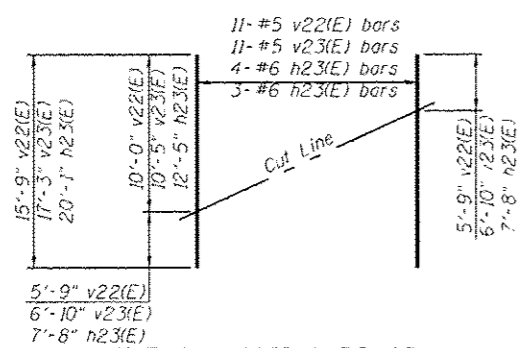
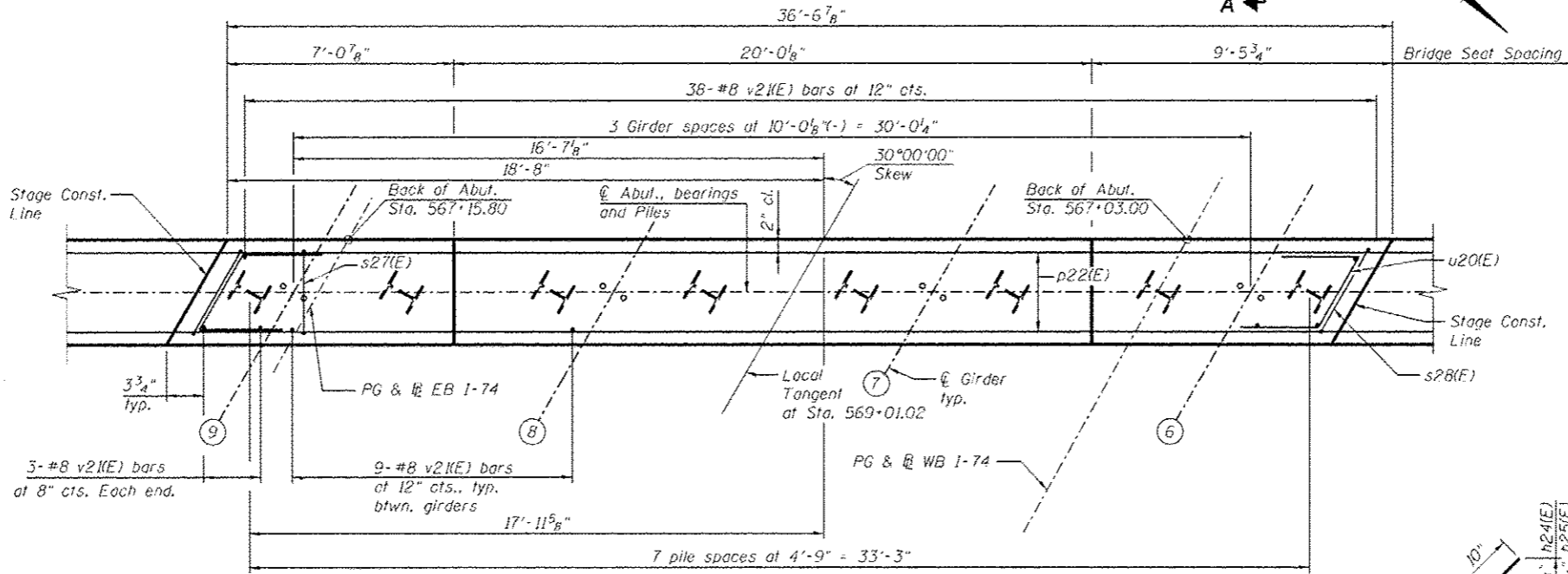


\*\* #4 sp(E) spiral, 2'-0" Dia. ea. pile. Provide 1/2 extra turns, top & bot. Provide 3-#4 spacers or equivalent, typ.

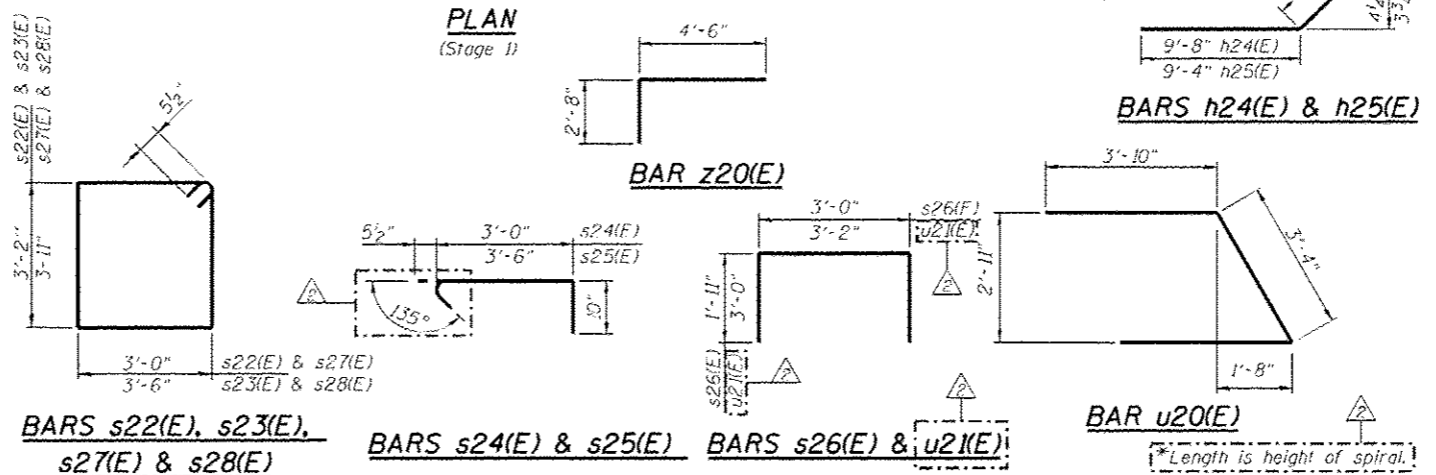


**SECTION A-A**  
**BILL OF MATERIAL**

Bar	No.	Size	Length	Shape
h20(E)	62	#7	13'-6"	
h21(E)	11	#4	13'-8"	
h22(E)	11	#4	5'-8"	
h23(E)	7	#6	20'-1"	
h24(E)	2	#5	10'-6"	
h25(E)	2	#5	10'-2"	
p20(E)	16	#7	28'-0"	
p21(E)	8	#5	27'-0"	
p22(E)	8	#7	36'-2"	
p23(E)	12	#5	19'-9"	
p24(E)	16	#7	27'-9"	
p25(E)	8	#5	26'-9"	
p26(E)	4	#5	7'-3"	
p27(E)	4	#5	23'-3"	
p28(E)	4	#5	10'-9"	
p29(E)	8	#5	22'-0"	
p30(E)	4	#5	9'-8"	
s22(E)	78	#5	13'-3"	
s23(E)	4	#5	14'-3"	
s24(E)	240	#5	4'-4"	
s25(E)	14	#5	4'-10"	
s26(E)	82	#5	6'-10"	
s27(E)	28	#5	14'-9"	
s28(E)	2	#5	15'-9"	
sp(E)	30	#4	2'-0"	WWW
u20(E)	27	#6	11'-0"	
u21(E)	6	#5	9'-2"	
v21(E)	268	#8	6'-6"	
v22(E)	11	#5	15'-9"	
v23(E)	11	#5	17'-3"	
v24(E)	7	#4	7'-11"	
v25(E)	7	#4	9'-0"	
w20(E)	6	#5	13'-8"	
w21(E)	6	#5	5'-8"	
z20(E)	15	#4	7'-2"	
Structure Excavation		Cu. Yd.	407	
Concrete Structures		Cu. Yd.	18.9	
Reinforcement Bars, Epoxy Coated		Pound	15,940	
Furnishing Steel Piles		Foot	2,175	
HP12x74 Driving Piles		Foot	2,175	
Test Pile Steel		Each	1	
HP12x74		Each	30	
File Shoes		Each	30	



**FIELD CUTTING DIAGRAM**  
Order v22(E), v23(E) and h23(E) full length. Cut as shown and use remainder of bars in opposite face.



**benesch**  
engineers - scientists - planners  
Alfred Benesch & Company  
205 North Michigan Avenue, Suite 2400  
Chicago, Illinois 60601  
312-565-0450 Job No. 10056

FILE NAME	USER NAME	DESIGNED	REVISION
0900169_68620_36_abut2.dgn	mschober	DTS	10/23/2012 MFB
		SLD	
		PRT/DTS	
		SLD	

**STATE OF ILLINOIS**  
**DEPARTMENT OF TRANSPORTATION**

**WEST ABUTMENT DETAILS 2 OF 3**  
**STRUCTURE NO. 090-0169**  
SHEET NO. 5C36 OF 5C63 SHEETS

F.A.I. RTE.	SECTION	COUNTY	TOTAL SHEETS	SHEET NO.
74	90-114R-14B-4,14,14HY8BR	TAZEWELL	2433	2012
				CONTRACT NO. 68620

x:\100000s\100056\engineer\ing-documents\phase.1\174over Jackson\Final\0900169\_68620\_36\_abut2.dgn 3:30:19 PM 10/22/2012