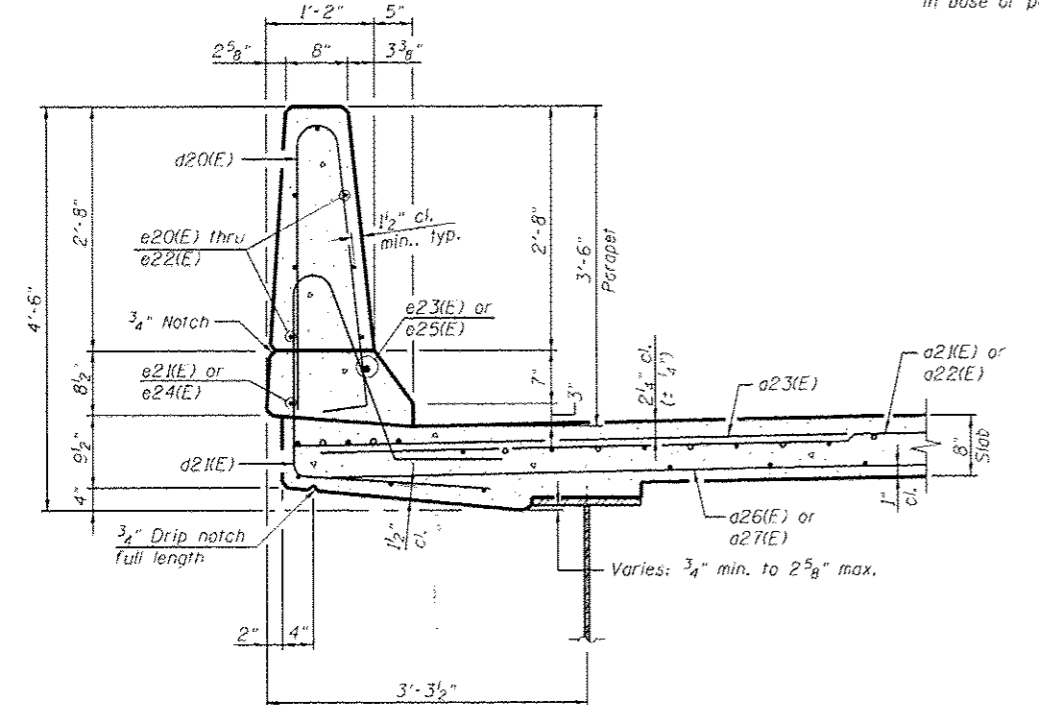


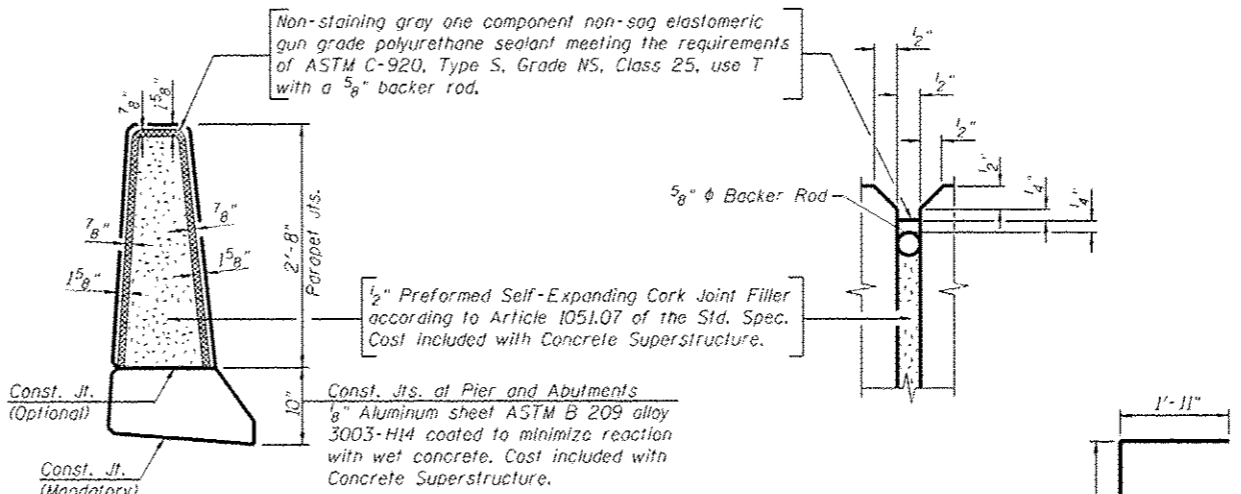
INSIDE ELEVATION OF PARAPET
(2 Thus)

**SUPERSTRUCTURE
BILL OF MATERIAL**

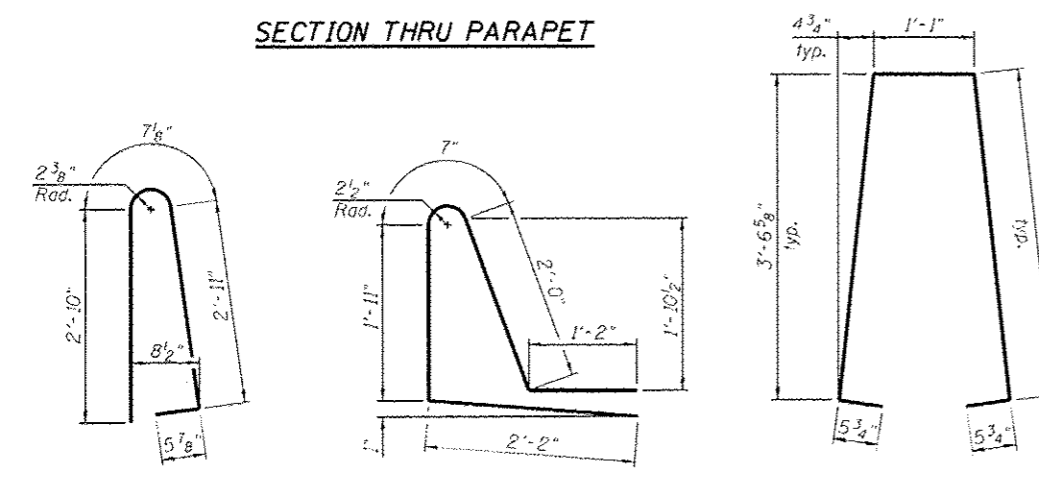
Bar	No.	Size	Length	Shape
a20(E)	1193	#5	31'-0"	
a21(E)	751	#5	43'-4"	
a22(E)	751	#5	42'-11"	
a23(E)	1486	#6	6'-6"	
a24(E)	8	#6	20'-3"	
a25(E)	16	#6	27'-3"	
a26(E)	442	#5	43'-1"	
a27(E)	442	#5	42'-8"	
b20(E)	1250	#5	34'-9"	
b21(E)	366	#6	34'-9"	
b22(E)	1067	#5	31'-6"	
d20(E)	684	#5	6'-10"	
d21(E)	684	#5	7'-10"	
d22(E)	342	#5	9'-3"	
d23(E)	684	#5	3'-5"	
e20(E)	98	#4	17'-3"	
e21(E)	32	#4	19'-8"	
e22(E)	112	#4	18'-3"	
e23(E)	26	#8	28'-6"	
e24(E)	26	#4	26'-0"	
e25(E)	4	#6	19'-8"	
m20(E)	10	#6	35'-11"	
m21(E)	40	#6	27'-0"	
m22(E)	8	#6	6'-2"	
m23(E)	88	#6	9'-8"	
m24(E)	16	#6	3'-6"	
m25(E)	16	#5	4'-0"	
m26(E)	8	#6	3'-6"	
m27(E)	8	#6	3'-1"	
m28(E)	8	#6	6'-8"	
s20(E)	246	#5	11'-10"	
s21(E)	222	#5	17'-0"	
v20(E)	246	#5	5'-0"	
Concrete Superstructure			Cu. Yd.	1,339.8
Reinforcement Bars, Epoxy Coated			Pound	1294,490



SECTION THRU PARAPET

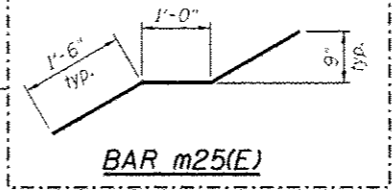


PARAPET JOINT DETAILS



BAR d20(E) **BAR d21(E)** **BAR d22(E)** **BAR d23(E)** **BAR s20(E)** **BAR s21(E)**

BAR v20(E)



BAR m25(E)

MINIMUM BAR LAP (Deck)
#5 bar = 3'-3"
#6 bar = 3'-10"

MINIMUM BAR LAP (Parapet)
#4 bar = 2'-0"
#8 bar = 5'-2"

benesch
engineers • scientists • planners

Alfred Benesch & Company
205 North Michigan Avenue, Suite 2400
Chicago, Illinois 60601
312-565-0450 Job No. 10056

FILE NAME	USER NAME	DESIGNED	REVISED
9900169.66620.21.dkdt1.dgn	mbecker	MFB	10/23/2012 MFB
		CHECKED	REVISED
		MRB	
		DRAWN	REVISED
		PRT	
		CHECKED	REVISED
		MRB	

**STATE OF ILLINOIS
DEPARTMENT OF TRANSPORTATION**

**SUPERSTRUCTURE DETAILS 1 OF 2
STRUCTURE NO. 090-0169**

SHEET NO. SC21 OF SC63 SHEETS

F.A.I. RTE.	SECTION	COUNTY	TOTAL SHEETS	SHEET NO.
74	90-[14R]-[14HB]-4.14,14HB[R]	TAZEWELL	2433	1997
CONTRACT NO. 68620			ILLINOIS FED. AID PROJECT	

x:\10000s\10056\engineering\documents\phase-1\174over-jackson\Final\0900169_68620_21.dkdt1.dgn 3:30:14 PM 10/22/2012