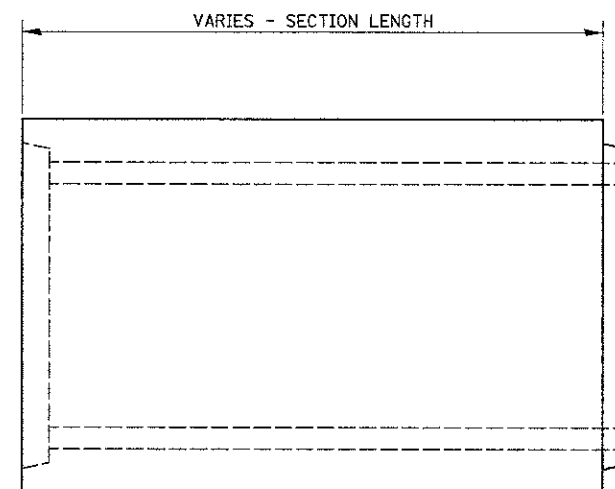
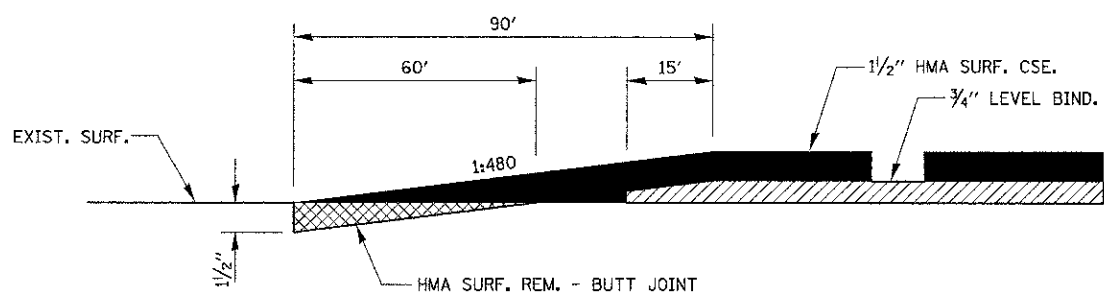
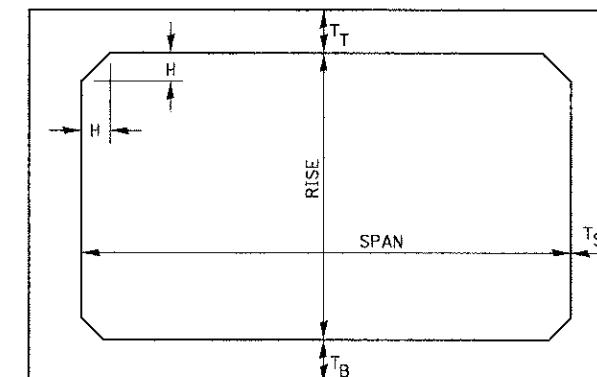


NOTE:
 WHEN MILLING OPERATIONS PRODUCE A ROUNDED EDGE,
 THEN A SAW CUT SHALL BE USED TO MANUFACTURE
 A PERPENDICULAR EDGE AS SHOWN IN THE DETAIL.
 THE ENGINEER SHALL BE THE SOLE JUDGE
 CONCERNING THE USE OF THIS DETAIL

HMA DETAIL AT BUTT JOINTS



ELEVATION



NOTE: THE HAUNCH DIMENSION H, IS EQUAL TO THE WALL THICKNESS T_S.

TYPICAL BOX SECTION

SPAN, FEET	T _T , INCHES		T _B , INCHES		T _S , INCHES	
	M 259	M 273	M 259	M 273	M 259	M 273
3	4	7	4	6	4	4
4	5	7 1/2	5	6	5	5
5	6	8	6	7	6	6
6	7	8	7	7	7	7
7	8	8	8	8	8	8
8	8	8	8	8	8	8
9	9	9	9	9	9	9
10	10	10	10	10	10	10
11	11	11	11	11	11	11
12	12	12	12	12	12	12

TYPICAL THICKNESSES

GENERAL NOTES:

MINIMUM COVER FOR BOX
 CULVERTS SHALL BE 6".

FILE NAME =	USER NAME = #USER#	DESIGNED - JML	REVISED -
#FILE#		DRAWN - JJO/DJM	REVISED -
	PLOT SCALE = #SCALE#	CHECKED - MSW	REVISED -
	PLOT DATE = #DATE#	DATE - 07-27-11	REVISED -

STATE OF ILLINOIS
 DEPARTMENT OF TRANSPORTATION

DETAILS

SCALE: SHEET NO. OF SHEETS STA. TO STA.

F.A.P. RTE.	SECTION	COUNTY	TOTAL SHEETS	SHEET NO.
840	138 BR-3	IROQUOIS	28	23
CONTRACT NO. 66971				
FED. ROAD DIST. NO. ILLINOIS FED. AID PROJECT				