

PROGRAM AND OFFICE ENGINEER: CHARLES F. RIDDLE, P.E. 847-705-4406 SCHAUMBURG, IL

FOR INDEX OF SHEETS, SEE SHEET NO. 2

FOR INDEX OF HIGHWAY STANDARDS, SEE SHEET NO. 2

PROJECT LOCATED IN RICHMOND TOWNSHIP.

STATE OF ILLINOIS

DEPARTMENT OF TRANSPORTATION

DIVISION OF HIGHWAYS

PLANS FOR PROPOSED FEDERAL AID HIGHWAY

HILL ROAD OVER NORTH BRANCH NIPPERSINK CREEK

SECTION: 08-00356-00-BR

PROJECT NO: BR0S-0111 (053)

BRIDGE REPLACEMENT

MCHENRY COUNTY

JOB NO: C-91-099-09

TR	SECTION	COUNTY	TOTAL SHEETS	SHEET NO.
21	08-00356-00-BR	MCHENRY	17	1
FED. ROAD DIST. NO. 1		ILLINOIS	CONTRACT NO. 63666	

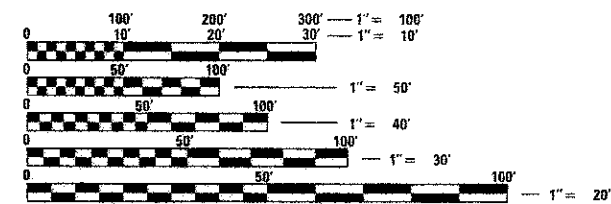


TRAFFIC DATA

HILL ROAD
 POSTED SPEED LIMIT = 45 MPH
 DESIGN SPEED LIMIT = 50 MPH
 2005 ADT = 1200
 2030 ADT = 6000

DESIGN DESIGNATION:

HILL ROAD: 3585(12) URBAN LOCAL 0.27 (FD-20)

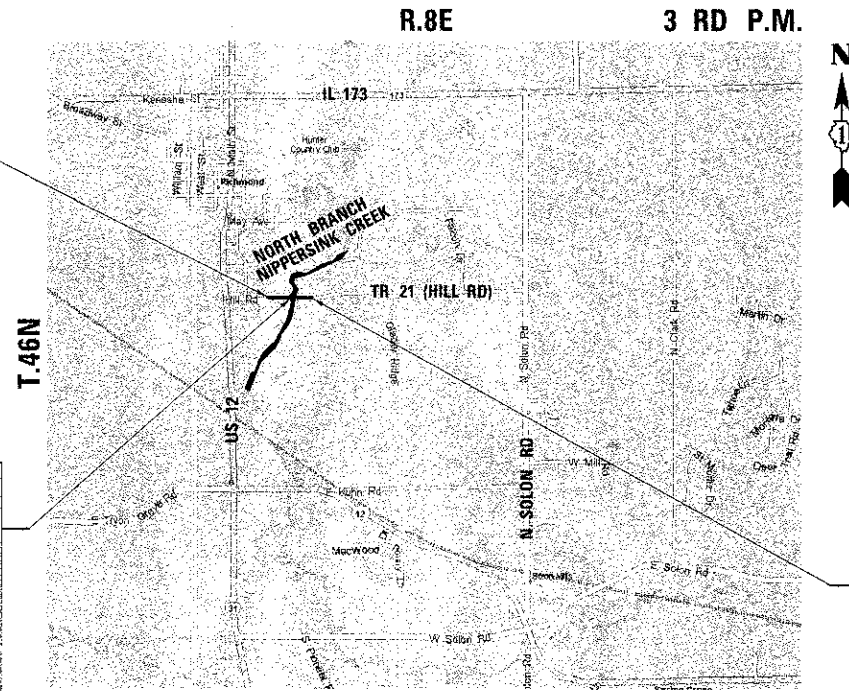


FULL SIZE PLANS HAVE BEEN PREPARED USING STANDARD ENGINEERING SCALES. REDUCED SIZED PLANS WILL NOT CONFORM TO STANDARD SCALES. IN MAKING MEASUREMENTS ON REDUCED PLANS, THE ABOVE SCALES MAY BE USED.

J.U.L.I.E.
 JOINT UTILITY LOCATION INFORMATION FOR EXCAVATION
 1-800-892-0123
 OR 811

HILL ROAD
 IMPROVEMENT BEGIN
 STA. 103 + 00

STRUCTURE REMOVAL
 AND REPLACEMENT
 STA. 109 + 89.00
 (EXISTING S.N. 056-3045)
 (PROPOSED S.N. 056-3192)
 HILL ROAD OVER
 NORTH BRANCH OF
 NIPPERSINK CREEK



LOCATION MAP
NOT TO SCALE

RICHMOND TOWNSHIP

GROSS LENGTH OF IMPROVEMENT = 1035 LF OR (0.20 MILES)

NET LENGTH OF IMPROVEMENT = 1035 LF OR (0.20 MILES)

HILL ROAD
 IMPROVEMENT END
 STA. 113 + 35

STRAND ASSOCIATES, INC.
 ANTHONY J. STANDISH, P.E. S.E.
 THIS STAMP APPLIES TO
 DRAWINGS:

DATE: 12-30-2011 EXP: 11-30-13

1170 SOUTH MOULTON ROAD
 JOLIET, ILLINOIS 60438
 (815) 744-6200

STATE OF ILLINOIS
 DEPARTMENT OF TRANSPORTATION
 DIVISION OF HIGHWAYS

Approved: December 22, 2011
Joseph R. Szepietowski, Jr.
 County of Mchenry, County Engineer

Passed: January 4, 2012
C. Standish
 District 1 Engineer of Local Roads & Streets

Releasing for Bid
 Based on Limited
 Review: JANUARY 4, 2012
Diane M. O'Neil
 Deputy Director of Highways, Region 1 Engineer

**PRINTED BY THE AUTHORITY
OF THE STATE OF ILLINOIS**