

11-08-2024 LETTING ITEM 043
INDEX OF SHEETS

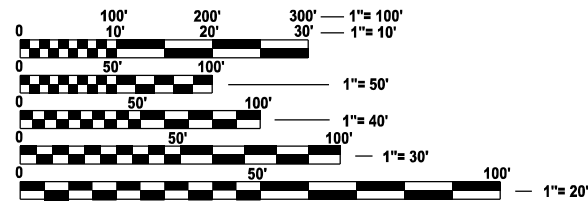
1. COVER SHEET
2. GENERAL NOTES
- 3-4. SUMMARY OF QUANTITIES
5. TYPICAL SECTION
6. SCHEDULES
7. TRAFFIC CONTROL AND PROTECTION, STANDARD 701321 (SPECIAL)
8. EXISTING GENERAL PLAN AND ELEVATION FOR STRUCTURE NO. 006-2543
9. PROPOSED GENERAL PLAN AND ELEVATION FOR STRUCTURE NO. 006-2543
10. EXCAVATION DETAILS FOR STRUCTURE NO. 006-2543 FOR STRUCTURE NO. 006-2543
11. CONCRETE REMOVAL DETAILS FOR STRUCTURE NO. 006-2543
12. GABIONS / SLOPE MATRESS DETAILS
13. BORING LOGS
14. PAVEMENT MARKING DETAILS
15. GUARDRAIL / BARRIER WALL DELINEATION DETAILS
16. TEMPORARY INFORMATION SIGNING

HIGHWAY STANDARDS

- | | |
|-----------|---|
| 000001-08 | STANDARD SYMBOLS, ABBREVIATIONS AND PATTERNS |
| 001006 | DECIMAL OF AN INCH AND OF A FOOT |
| 630001-13 | STEEL PLATE BEAM GUARDRAIL |
| 701001-02 | OFF-ROAD OPERATIONS 2L, 2W, MORE THAN 15' AWAY |
| 701006-05 | OFF-ROAD OPERATIONS 2L, 2W, 15' TO 24" FROM PAVEMENT EDGE |
| 701201-05 | LANE CLOSURE, 2L, 2W, DAY ONLY, FOR SPEEDS ≥ 45 MPH |
| 701301-04 | LANE CLOSURE, 2L, 2W, SHORT TIME OPERATIONS |
| 701901-09 | TRAFFIC CONTROL DEVICES |
| 704001-08 | TEMPORARY CONCRETE BARRIER |
| 782006-01 | GUARDRAIL AND BARRIER WALL REFLECTOR MOUNTING DETAILS |

PROJECT LOCATION

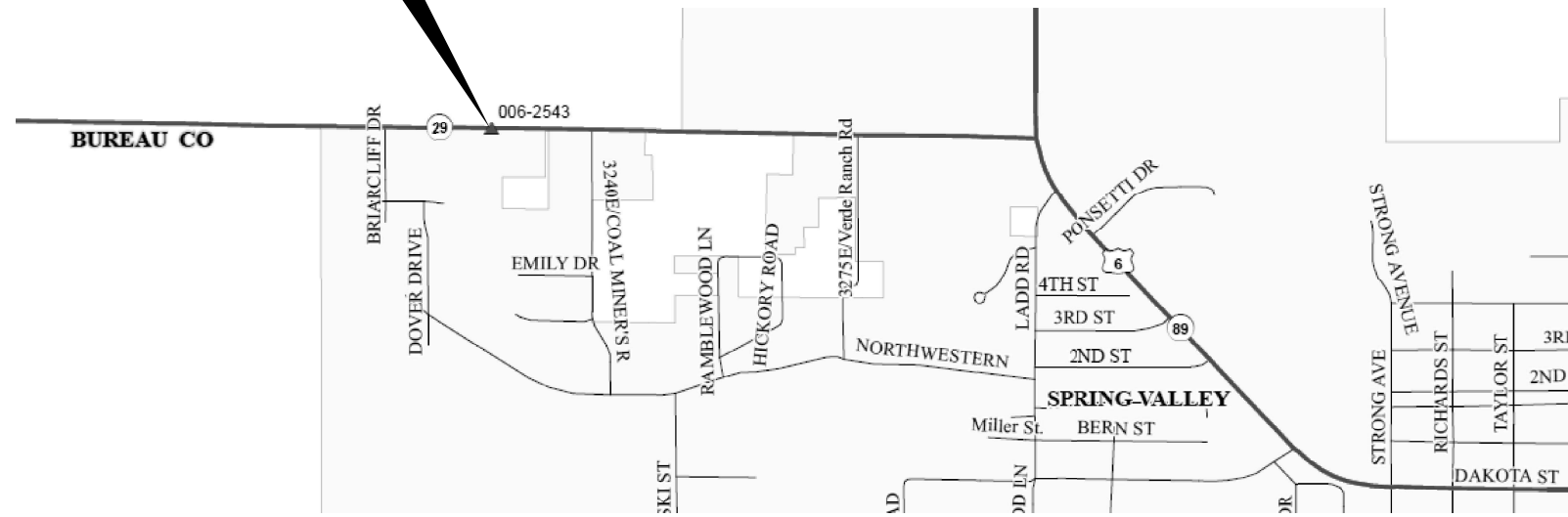
STRUCTURE NO. 006-2543
AT STA. 296+85
CARRYING F.A.S. ROUTE 1252
OVER A STREAM, 0.8 MI.
WEST OF US 6/IL 89 INTERSECTION
(WEST OF SPRING VALLEY)



FULL SIZE PLANS HAVE BEEN PREPARED USING STANDARD ENGINEERING SCALES. REDUCED SIZED PLANS WILL NOT CONFORM TO STANDARD SCALES. IN MAKING MEASUREMENTS ON REDUCED PLANS, THE ABOVE SCALES MAY BE USED.

J.U.L.I.E.
JOINT UTILITY LOCATION INFORMATION FOR EXCAVATION
1-800-892-0123
OR 811

PROJECT ENGINEER: YOGESH PATEL P.E.
UNIT CHIEF: RON WOODSHANK
DISTRICT NO. 3 (815) 434-6131
CONTRACT NO. 66P61



POINT LOCATION

STATE OF ILLINOIS
DEPARTMENT OF TRANSPORTATION

PROPOSED
HIGHWAY PLANS

F.A.U. ROUTE 5602 (IL ROUTE 29)

SECTION (R-4)CLV

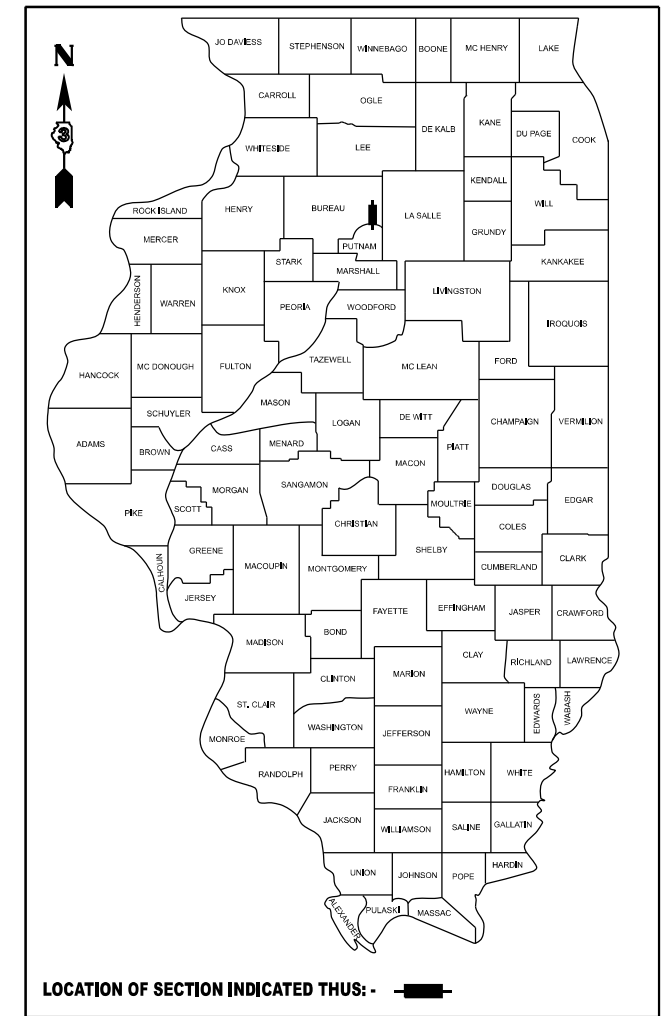
BOX CULVERT REPAIR

BUREAU COUNTY

C-93-125-24

F.A.U. RTE.	SECTION	COUNTY	TOTAL SHEETS	SHEET NO.
5602	(R4)CLV	BUREAU	16	1
		ILLINOIS	CONTRACT NO. 66P61	

D-93-086-24



FUNCTIONAL CLASSIFICATION
URBAN - MAJOR COLLECTOR
F.A.U. ROUTE 5602 (IL ROUTE 29)
2023 ADT = 2450
P.V. 96.3 % S.U. 3.1 % M.U. 0.6 %

STATE OF ILLINOIS
DEPARTMENT OF TRANSPORTATION

SUBMITTED August 21, 2024

Trisha Thompson
REGIONAL ENGINEER

October 4, 2024
Scott A. Elk
ENGINEER OF DESIGN AND ENVIRONMENT

October 4, 2024
James J. ...
DIRECTOR OF HIGHWAYS PROJECT IMPLEMENTATION

PRINTED BY THE AUTHORITY
OF THE STATE OF ILLINOIS

GENERAL NOTES

THE FINISHED EARTHWORK SHALL HAVE A VEGETATION SUSTAINING SOIL COVERING THE TOP FOUR INCHES (100 MILLIMETERS) IN AREAS TO BE SEEDED OR SODDED. THE VEGETATION SUSTAINING SOIL REQUIRED WILL NOT BE PAID FOR SEPARATELY BUT WILL BE INCLUDED IN THE COST OF FURNISHED EXCAVATION.

ALL EXCAVATED MATERIAL, WHICH INCLUDES DIGGING OR GRADING OF ANY SOIL OR FILL MATERIAL, WITH THE EXCEPTION OF AGGREGATE FILLS, MUST BE INCORPORATED WITHIN THE IDOT RIGHT OF WAY.

SHORT TERM PAVEMENT MARKING SHALL BE USED TO OUTLINE EXISTING CENTERLINE STRIPE. SHORT TERM PAVEMENT MARKING SHALL BE PLACED PRIOR TO THE REMOVAL OF TRAFFIC CONTROL DEVICES AND REMAIN UNTIL SUCH TIME THAT PERMANENT PAVEMENT STRIPING CAN BE PLACE.

ALL ELEVATIONS REFERRING TO U.S.G.S. MEAN SEA LEVEL DATUM.

THE FOLLOWING RATES OF APPLICATION HAVE BEEN USED IN CALCULATING PLAN QUANTITIES:

GRANULAR MATERIALS	2.05	TONS / CU YD
HMA RESURFACING	112	LBS / SQ YD / IN
SHORT TERM PAVEMENT MARKING	10	FT /100 FT OF APPLICATION

MEMBERS OF JULIE KNOWN TO BE WITHIN THE LIMITS OF THE IMPROVEMENT ARE:

- AMEREN
- FRONTIER COMMUNICATIONS
- METRO COMMUNICATIONS
- CITY OF SPRING VALLEY

COMMITMENT

NONE.

**STATE OF ILLINOIS
DEPARTMENT OF TRANSPORTATION
DISTRICT THREE
AS BUILT INFORMATION**

SUPERVISING CONSTRUCTION FIELD ENGINEER

RESIDENT ENGINEER / TECHNICIAN

**START & END DATES
OF CONSTRUCTION:**

INSPECTORS:

MODEL: Default
FILE NAME: C:\pwwork\woodshank\1004427\66P61.dgn

USER NAME = ronald.woodshank	DESIGNED - RW	REVISED -
	DRAWN - RW	REVISED -
	CHECKED - YP	REVISED -
PLOT DATE = 7/11/2024	DATE - 4/19/2024	REVISED -

**STATE OF ILLINOIS
DEPARTMENT OF TRANSPORTATION**

GENERAL NOTES

SCALE: SHEET 1 OF 1 SHEETS STA. TO STA.

F.A.U. RTE.	SECTION	COUNTY	TOTAL SHEETS	SHEET NO.
5602	(R4)CLV	BUREAU	16	2
CONTRACT NO. 66P61				
ILLINOIS FED. AID PROJECT				

CODE NO.	ITEM	UNIT	TOTAL QUANTITY	CONSTRUCTION CODE
				CONTRACT MAINTENANCE
				100% STATE
				BOX CULVERT
				0004
				S.N. 006-2543
20200100	EARTH EXCAVATION	CU YD	221	221
20400800	FURNISHED EXCAVATION	CU YD	72	72
28100107	STONE RIPRAP, CLASS A4	SQ YD	32	32
28200200	FILTER FABRIC	SQ YD	137	137
28400100	GABIONS	CU YD	61	61
28401000	SLOPE MATTRESS 12"	SQ YD	40	40
31101900	SUBBASE GRANULAR MATERIAL, TYPE C	TON	8	8
50102400	CONCRETE REMOVAL	CU YD	16.2	16.2
50200100	STRUCTURE EXCAVATION	CU YD	29	29
52200020	TEMPORARY SOIL RETENTION SYSTEM	SQ FT	703	703
* 63000003	STEEL PLATE BEAM GUARDRAIL, TYPE A, 9 FOOT POSTS	FOOT	125	125
* 63100167	TRAFFIC BARRIER TERMINAL, TYPE 1 (SPECIAL) TANGENT	EACH	2	2
63200310	GUARDRAIL REMOVAL	FOOT	212.5	212.5
67100100	MOBILIZATION	L SUM	1	1

*SPECIALITY ITEMS

MODEL: Default
FILE NAME: c:\pwworkspace\woodshank\1004427166P61.dgn

USER NAME = ronald.woodshank	DESIGNED - RW	REVISED -
	DRAWN - RW	REVISED -
	CHECKED - YP	REVISED -
PLOT DATE = 8/22/2024	DATE - 4/19/2024	REVISED -

STATE OF ILLINOIS
DEPARTMENT OF TRANSPORTATION

SUMMARY OF QUANTITIES

SCALE: SHEET 1 OF 2 SHEETS STA. TO STA.

F.A.U. RTE.	SECTION	COUNTY	TOTAL SHEETS	SHEET NO.
5602	(R4)CLV	BUREAU	16	3
			CONTRACT NO. 66P61	
		ILLINOIS	FED. AID PROJECT	

CODE NO.	ITEM	UNIT	TOTAL QUANTITY	CONSTRUCTION CODE
				CONTRACT MAINTENANCE
				100% STATE
				BOX CULVERT
				0004
				S.N. 006-2543
70100450	TRAFFIC CONTROL AND PROTECTION, STANDARD 701201	L SUM	1	1
70106500	TEMPORARY BRIDGE TRAFFIC SIGNALS	EACH	1	1
70300100	SHORT TERM PAVEMENT MARKING	FOOT	66	66
70300150	SHORT TERM PAVEMENT MARKING REMOVAL	SQ FT	22	22
70400100	TEMPORARY CONCRETE BARRIER	FOOT	350	350
70600251	IMPACT ATTENUATORS, TEMPORARY (NON- REDIRECTIVE, NARROW), TEST LEVEL 3	EACH	2	2
* 78009004	MODIFIED URETHANE PAVEMENT MARKING - LINE 4"	FOOT	350	350
* 78009006	MODIFIED URETHANE PAVEMENT MARKING - LINE 6"	FOOT	170	170
* 78200005	GUARDRAIL REFLECTORS, TYPE A	EACH	3	3
78300202	PAVEMENT MARKING REMOVAL - WATER BLASTING	SQ FT	200	200
X6350204	LINEAR DELINEATOR PANELS, 4 INCH	EACH	3	3
X7010118	TEMPORARY RUMBLE STRIPS (SPECIAL)	EACH	6	6
X7010202	TRAFFIC CONTROL AND PROTECTION, STANDARD 701321 (SPECIAL)	EACH	1	1
Z0030850	TEMPORARY INFORMATION SIGNING	SQ FT	42	42

*= SPECIALTY ITEM

MODEL: Default
FILE NAME: c:\pwworkspace\woodshank\1004427166P61.dgn

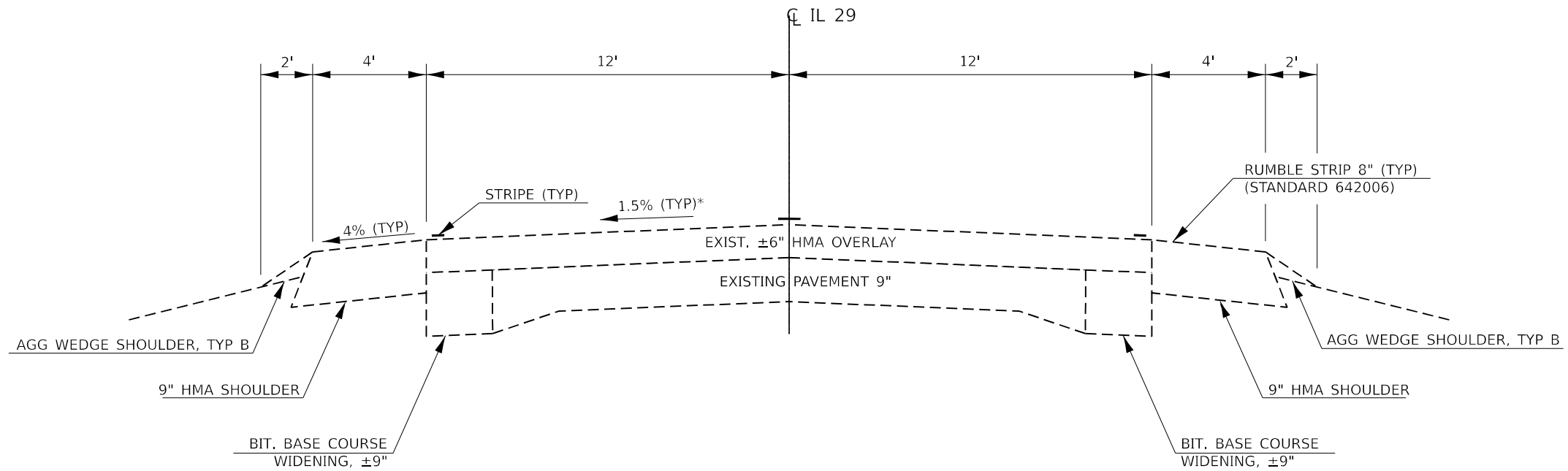
USER NAME = ronald.woodshank	DESIGNED - RW	REVISED -
	DRAWN - RW	REVISED -
	CHECKED - YP	REVISED -
PLOT DATE = 8/22/2024	DATE - 4/19/2024	REVISED -

**STATE OF ILLINOIS
DEPARTMENT OF TRANSPORTATION**

SUMMARY OF QUANTITIES

SCALE: SHEET 2 OF 2 SHEETS STA. TO STA.

F.A.U. RTE.	SECTION	COUNTY	TOTAL SHEETS	SHEET NO.
5602	(R4)CLV	BUREAU	16	4
CONTRACT NO. 66P61				
ILLINOIS FED. AID PROJECT				



EXISTING TYPICAL SECTION 2

STA 174+24 TO STA 191+93
 STA 191+93 BK = STA 191+97 AH
 STA 191+97 TO STA 333+00

MODEL: Default
 FILE NAME: c:\pwwork\woodshank\100427\66P61.dgn

USER NAME = ronald.woodshank	DESIGNED - RW	REVISED -
	DRAWN - RW	REVISED -
	CHECKED - YP	REVISED -
PLOT DATE = 7/11/2024	DATE - 4/19/2024	REVISED -

**STATE OF ILLINOIS
 DEPARTMENT OF TRANSPORTATION**

TYPICAL SECTION

SCALE: SHEET 1 OF 1 SHEETS STA. TO STA.

F.A.U. RTE.	SECTION	COUNTY	TOTAL SHEETS	SHEET NO.
5602	(R4)CLV	BUREAU	16	5
CONTRACT NO. 66P61				
ILLINOIS FED. AID PROJECT				

SCHEDULE - TRAFFIC CONTROL

LOCATION	TRAFFIC CONTROL AND PROTECTION STANDARD 701201	TRAFFIC CONTROL AND PROTECTION STANDARD 701321 (SPECIAL)	TEMPORARY BRIDGE TRAFFIC SIGNALS	TEMPORARY RUMBLE STRIPS (SPECIAL)	TEMPORARY CONCRETE BARRIER	IMPACT ATTENUATORS TEMPORARY NON-REDIRECTIVE NARROW TEST LEVEL 3
	L SUM	EACH	EACH	EACH	FOOT	EACH
PROJECT	1	1	1	6	350	2
TOTAL	1	1	1	6	350	2

SCHEDULE - PAVEMENT MARKING

LOCATION	PAVEMENT MARKING REMOVAL WATERBLASTING	SHORT TERM PAVEMENT MARKING	SHORT TERM PAVEMENT MARKING REMOVAL	MODIFIED URETHANE PAVEMENT MARKING LINE 4"	MODIFIED URETHANE PAVEMENT MARKING LINE 6"
	SQ FT	FOOT	SQ FT	FOOT	FOOT
STAGE I	200	66	22	350	170
TOTAL	200	66	22	350	170

SCHEDULE - GUARDRAIL

LOCATION	GUARDRAIL REMOVAL	STEEL PLATE BEAM GUARDRAIL TYPE A 9 FOOT POSTS	TRAFFIC BARRIER TERMINAL TYPE I (SPECIAL) TANGENT	GUARDRAIL REFLECTORS TYPE A	LINEAR DELINEAR PANELS 4 INCH
	FOOT	FOOT	EACH	EACH	EACH
STAGE I	212.5	125	2	3	3
TOTAL	212.5	125	2	3	3

MODEL: Default
FILE NAME: c:\pwworking\woodshank\1004427166P61.dgn

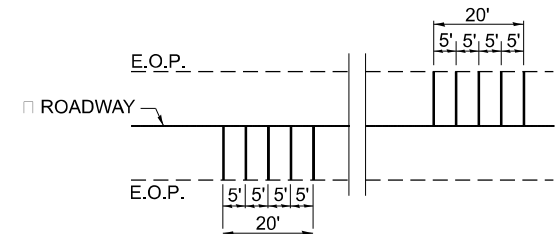
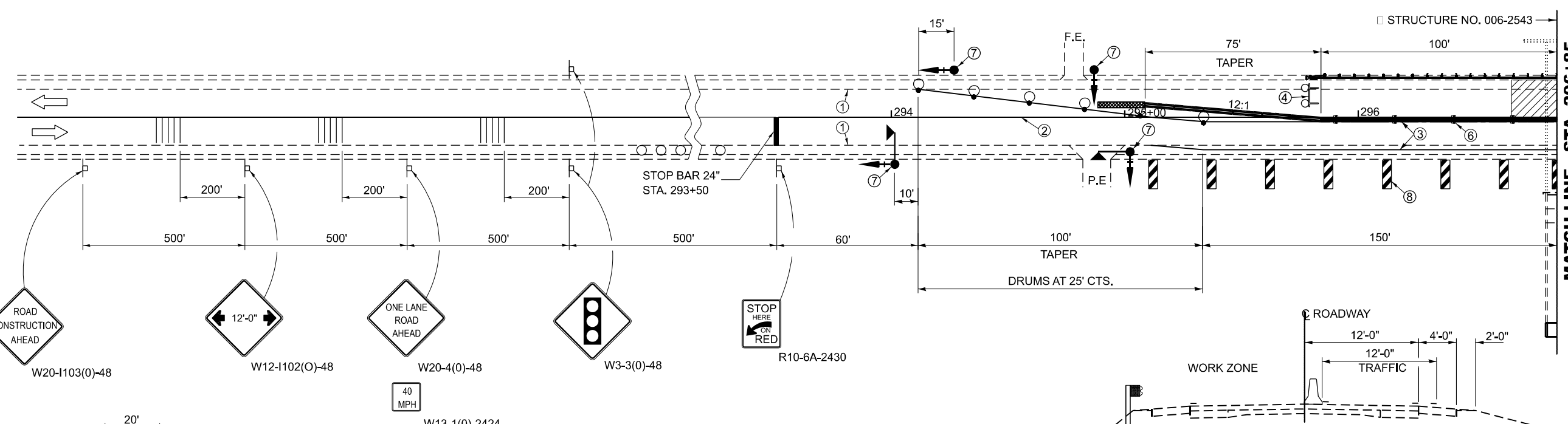
USER NAME = ronald.woodshank	DESIGNED - RW	REVISED -
	DRAWN - RW	REVISED -
	CHECKED - YP	REVISED -
PLOT DATE = 7/11/2024	DATE - 4/19/2024	REVISED -

**STATE OF ILLINOIS
DEPARTMENT OF TRANSPORTATION**

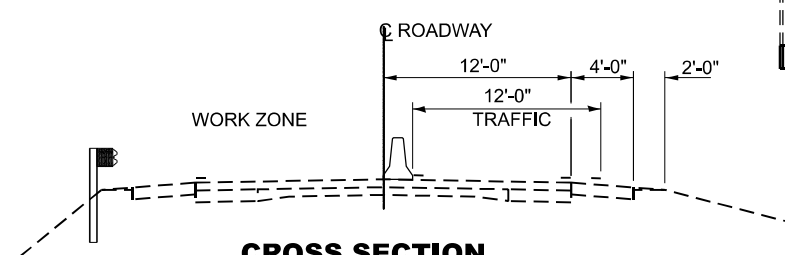
SCHEDULES

SCALE: SHEET 1 OF 2 SHEETS STA. TO STA.

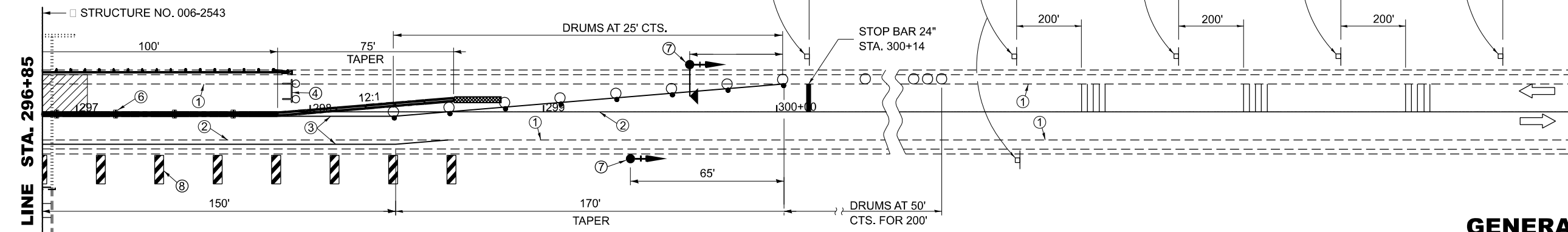
F.A.U. RTE.	SECTION	COUNTY	TOTAL SHEETS	SHEET NO.
5602	(R4)CLV		16	6
CONTRACT NO. 66P61				
ILLINOIS FED. AID PROJECT				



TEMPORARY RUMBLE STRIP (SPECIAL)
 FOR PAYMENT PURPOSES, EACH LANE OF TRAFFIC SHALL BE CONSIDERED "ONE EACH".



CROSS SECTION



SYMBOLS

	WORK AREA		DRUM WITH STEADY BURNING BI-DIRECTIONAL LIGHT (TAPER ONLY)
	SIGN		TEMPORARY CONCRETE BARRIER
	TYPE III BARRICADE WITH FLASHING LIGHTS		TEMPORARY RUMBLE STRIP (SPECIAL)
	IMPACT ATTENUATOR		BARRIER WALL REFLECTOR, TYPE "C"
	DRUM (TANGENT ONLY)		CRYSTAL, BIDIRECTIONAL GUARDRAIL/BARRIER WALL REFLECTOR
	TRAFFIC SIGNAL WITH BACK PLATE AND MICROWAVE DETECTOR		DRUM (TANGENT ONLY)
	TRAFFIC SIGNAL WITH BACK PLATE		DRUM (TANGENT ONLY)

- ① EXISTING PAVEMENT MARKING (EDGE LINE)
- ② PAVEMENT MARKING REMOVAL
- ③ TEMPORARY PAVEMENT MARKING
- ④ TYPE III BARRICADE TO BE PLACED WHEN NO WORK IS BEING PERFORMED.
- ⑤ GUARDRAIL REFLECTORS, TYPE "A" AT 25' CTS.

- ⑥ BARRIER WALL REFLECTORS TYPE "C" AT 25' CTS. SEE TEMPORARY CONCRETE BARRIER WALL DETAILS AND STANDARDS 704001 & 782006.
- ⑦ THE EDGE OF THE POST MOUNTED SIGNAL HEAD SHALL BE BETWEEN 24" AND 6" FROM EDGE OF SHOULDER.
- ⑧ VERTICAL PANELS AT 25' CTS. THROUGHOUT LANE SHIFT. THESE DEVICES MAY BE OMITTED WHEN THE GUARDRAIL WITH REFLECTORS EXTENDS TO AT LEAST THIS POINT ON THE TAPER.

GENERAL NOTES

THIS STANDARD IS USED WHERE, AT ANY TIME, ANY VEHICLE, EQUIPMENT, WORKERS, OR THEIR ACTIVITIES WILL ENCROACH ON ONE LANE OF A BRIDGE, TRAFFIC SIGNALS AND A POSITIVE BARRIER ARE REQUIRED.

TRAFFIC SIGNALS SHALL BE OPERATIONAL ONLY WHEN ALL TRAFFIC CONTROLS ARE IN PLACE. WHEN TRAFFIC SIGNALS ARE NOT IN OPERATION, FLAGGERS SHALL BE USED AND TRAFFIC CONTROL SHALL CONFORM TO STANDARD 701201 OR 701206.

TEMPORARY CONCRETE BARRIER SHALL BE ACCORDING TO STANDARD 704001.

EXISTING OR TEMPORARY PAVEMENT MARKINGS SHALL BE ON BOTH SIDES OF OPEN LANE FROM STOP BAR TO STOP BAR.

MODEL: Default
FILE NAME: C:\pwworking\woodshank\100442766P61.dgn

USER NAME = ronald.woodshank	DESIGNED - RW	REVISED -
	DRAWN - RW	REVISED -
	CHECKED - YP	REVISED -
PLOT DATE = 7/11/2024	DATE - 4/19/2024	REVISED -

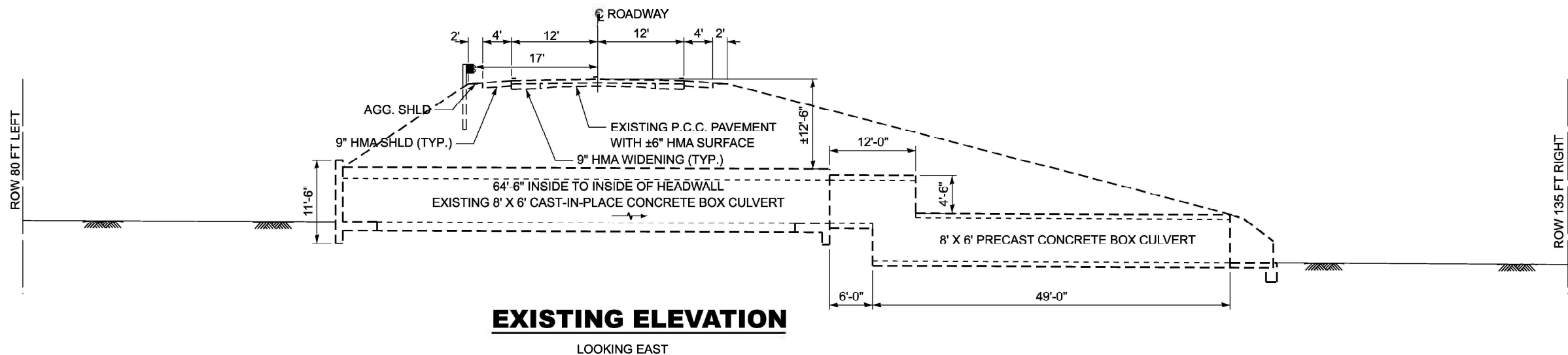
**STATE OF ILLINOIS
DEPARTMENT OF TRANSPORTATION**

TRAFFIC CONTROL AND PROTECTION, STANDARD 701321 (SPECIAL)

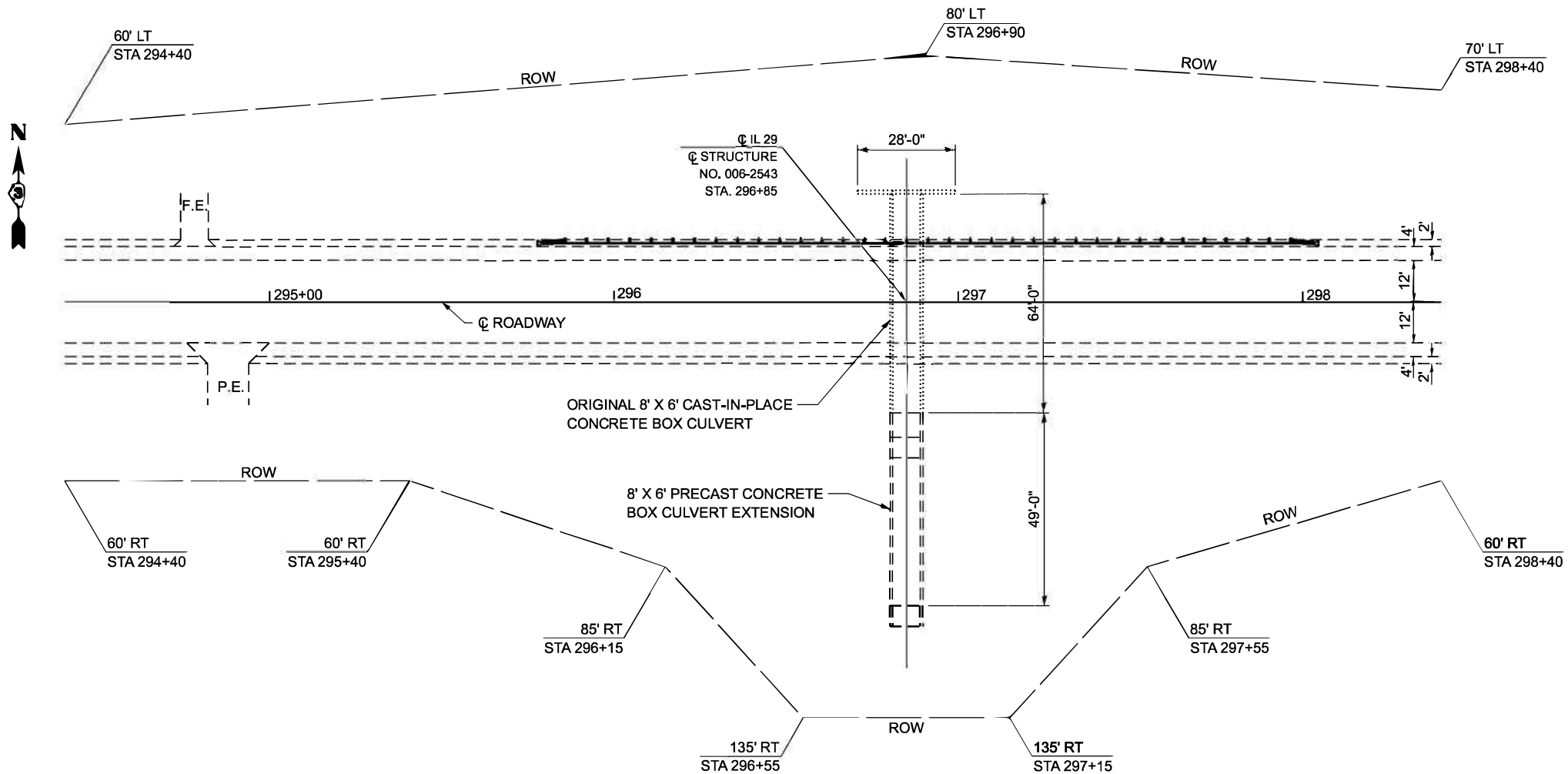
SCALE: SHEET 1 OF 1 SHEETS STA. TO STA.

F.A.U. RTE.	SECTION	COUNTY	TOTAL SHEETS	SHEET NO.
5602	(R4)CLV	BUREAU	16	7
CONTRACT NO. 66P61				
ILLINOIS FED. AID PROJECT				

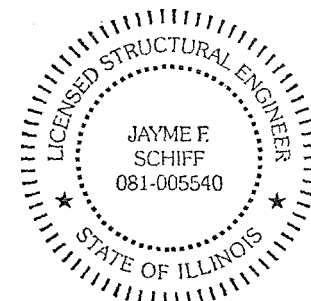
CONTROL					
NAME	NORTHING	EASTING	ELEVATION	CODE	DESCRIPTION
CP1	1701607.482	2552476	637.569	105-809	BARN SPIKE IN EAST SIDE OF F.E. @ NW QUAD S.N. 006-2543
CP2	1701561.615	2553583.1	0.000	105-809	BARN SPIKE IN SW RADIUS IL 29 & COALMINERS RD.
BM1	1701550.045	2552401.3	642.302	838-255	RAILROAD SPIKE IN PP W/TRANSFORMER NEAR SW QUAD S.N. 006-2543



LOOKING EAST



EXISTING PLAN
STRUCTURE NO. 006-2543



EXPIRES 11-30-2024

Jayme F. Schiff

DESCRIPTION OF WORK

1. REMOVE EXISTING GUARDRAIL (REMOVAL INCLUDES TERMINAL SECTIONS).
2. CLEAR AND GRUB FORSLOPE AND AREA ADJACENT TO BOX CULVERT END SECTION.
3. INSTALL TEMPORARY SOIL RETENTION SYSTEM.
3. EXCAVATE BEHIND WING/HEAD WALL.
4. REMOVE CONCRETE WINGS/HEADWALL AND BARREL AS SHOWN.
5. SHAPE AND GRADE FORESLOPE AND BASE ADJACENT TO BOX CULVERT.
6. PLACE FILTER FABRIC.
7. INSTALL GABION BASKETS AND SLOPE MATTRESS
8. INSTALL STEEL PLATE BEAM GUARDRAIL AND TERMINALS.

MODEL: Default
FILE NAME: c:\pwworkspace\woodshank\1004427168\81.dgn

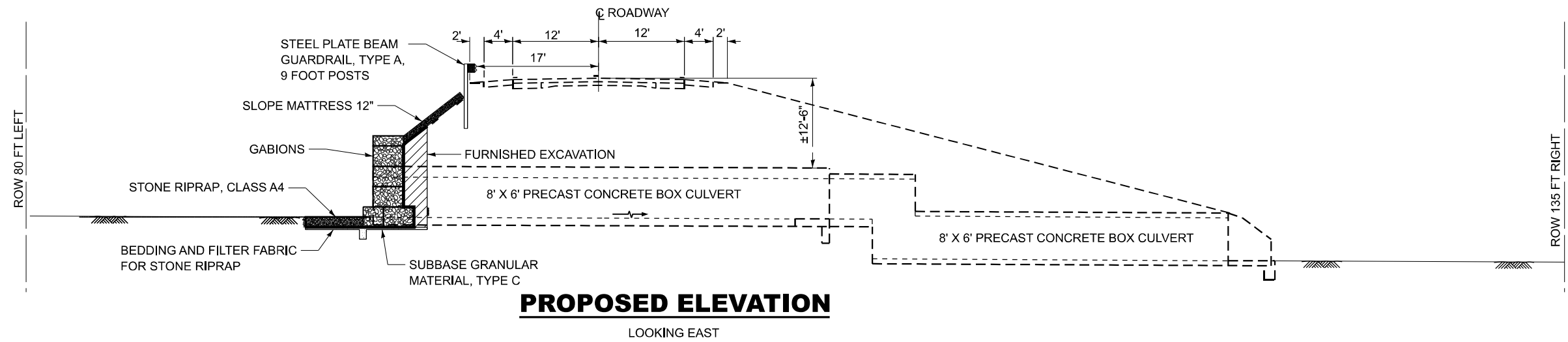
USER NAME = ronald.woodshank	DESIGNED - RW	REVISED -
	DRAWN - RW	REVISED -
	CHECKED - YP	REVISED -
PLOT DATE = 8/22/2024	DATE = 4/19/2024	REVISED -

STATE OF ILLINOIS
DEPARTMENT OF TRANSPORTATION

EXISTING GENERAL PLAN AND ELEVATION
FOR STRUCTURE NO. 006-2543

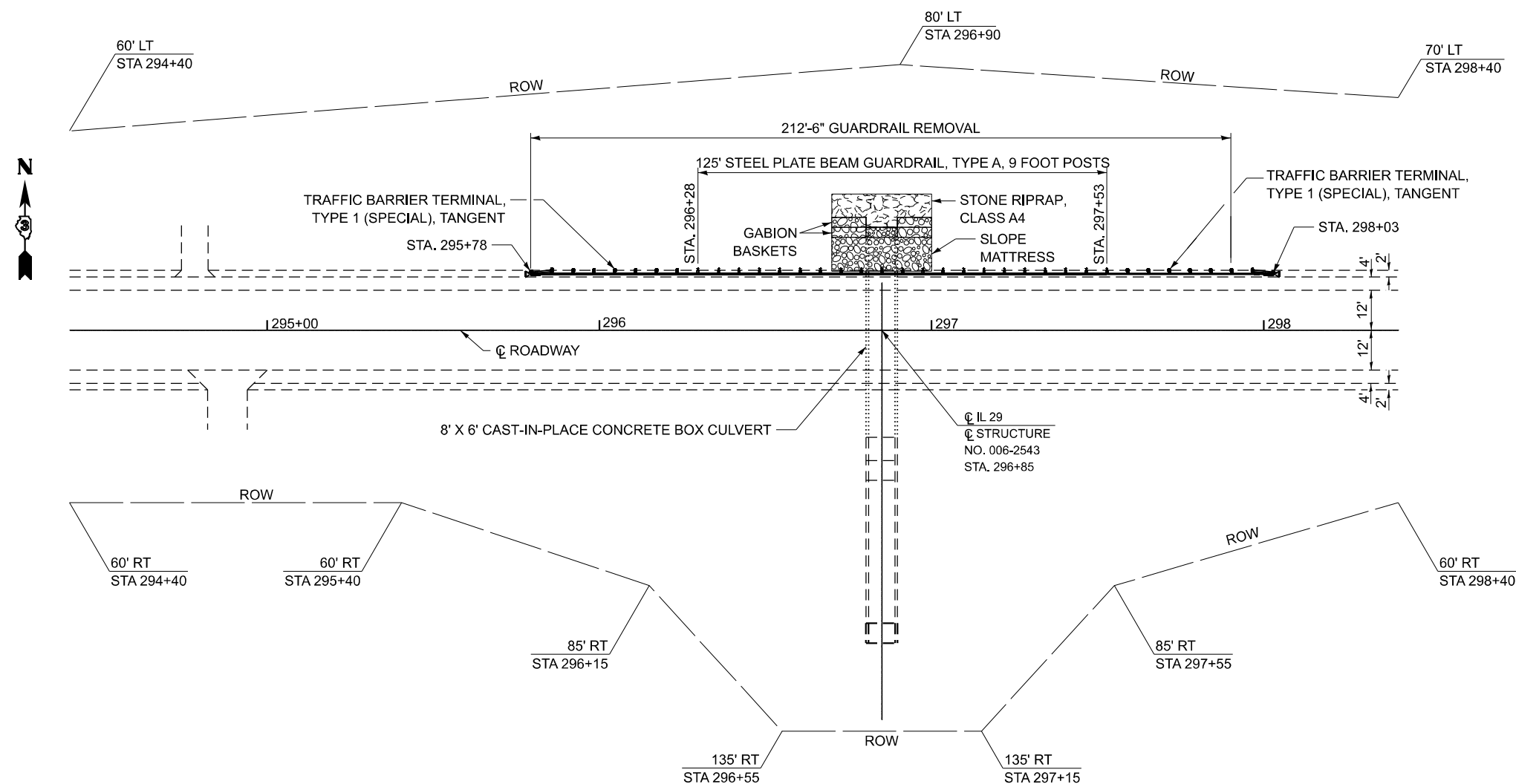
SCALE: SHEET 1 OF 1 SHEETS STA. TO STA.

F.A.U. RTE.	SECTION	COUNTY	TOTAL SHEETS	SHEET NO.
5602	(R4)CLV	BUREAU	16	8
ILLINOIS FED. AID PROJECT			CONTRACT NO. 66P61	



PROPOSED ELEVATION

LOOKING EAST



PROPOSED PLAN
STRUCTURE NO. 006-2543

TOTAL BILL OF MATERIAL

ITEM	UNIT	TOTAL
TEMPORARY SOIL RETENTION SYSTEM	SQ FT	703
STRUCTURE EXCAVATION	CY YD	29
EARTH EXCAVATION	CU YD	221
FURNISHED EXCAVATION	CU YD	72
CONCRETE REMOVAL	CU YD	16.2
GABIONS	CU YD	61
SLOPE MATTRESS 12"	SQ YD	40
FILTER FABRIC	SQ YD	137
SUBBASE GRANULAR MATERIAL, TYPE C	TON	8
STONE RIPRAP, CLASS A4	SQ YD	32

MODEL: Default
FILE NAME: c:\pwworkspace\woodshank\1004427166P61.dgn

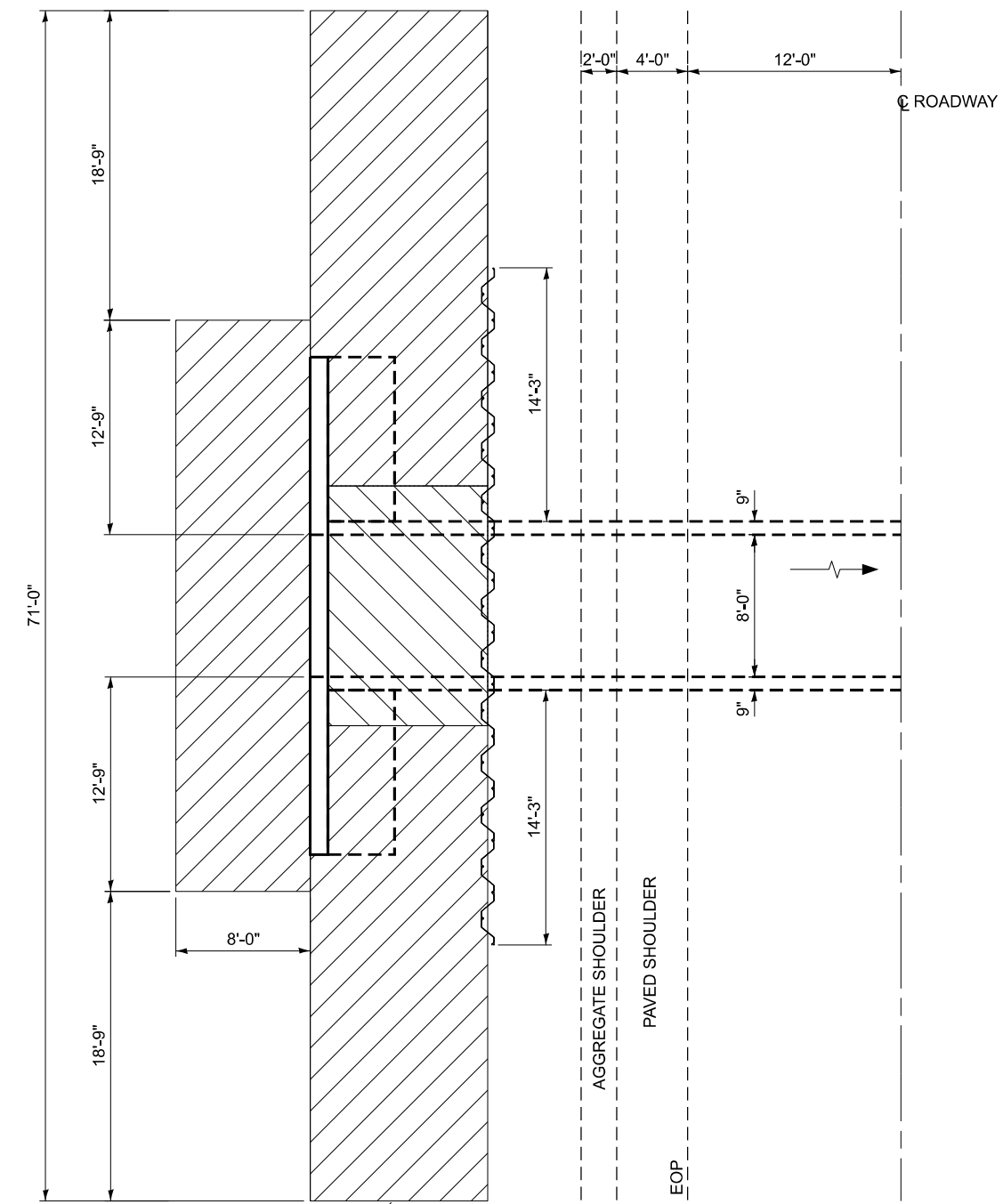
USER NAME = ronald.woodshank	DESIGNED - RW	REVISED -
	DRAWN - RW	REVISED -
	CHECKED - YP	REVISED -
PLOT DATE = 8/22/2024	DATE - 4/19/2024	REVISED -

STATE OF ILLINOIS
DEPARTMENT OF TRANSPORTATION

PROPOSED GENERAL PLAN AND ELEVATION
FOR STRUCTURE NO. 006-2543

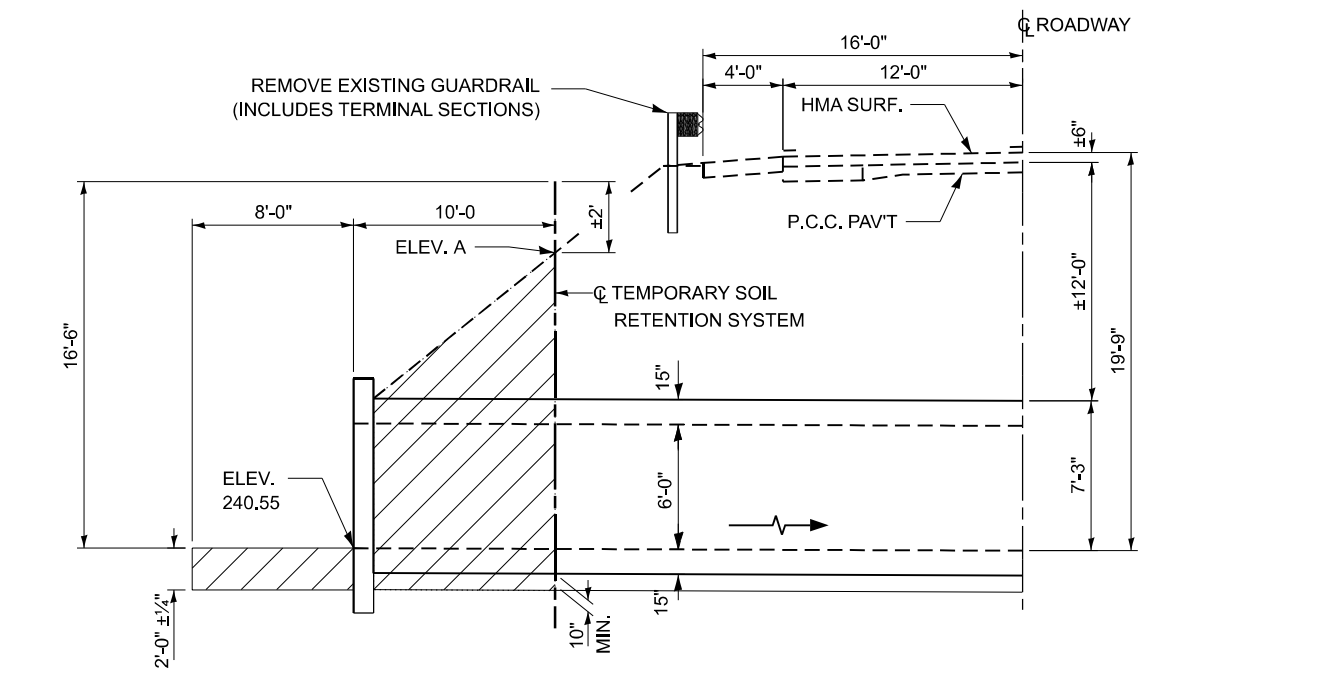
SCALE: SHEET 1 OF 1 SHEETS STA. TO STA.

F.A.U. RTE.	SECTION	COUNTY	TOTAL SHEETS	SHEET NO.
5602	(R4)CLV	BUREAU	16	9
CONTRACT NO. 66P61				
ILLINOIS FED. AID PROJECT				

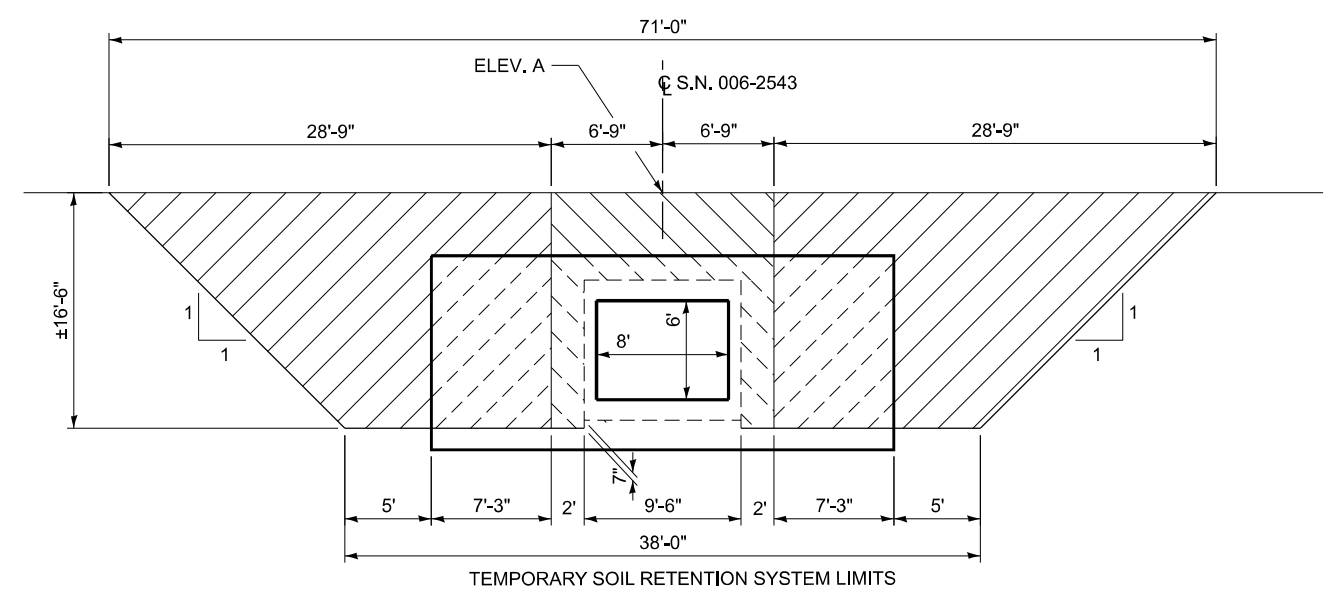


EXCAVATION LIMITS

HALF PLAN
STRUCTURE NO. 006-2543
 GUARDRAIL NOT SHOWN FOR CLARITY



ELEVATION



SECTION THRU BARREL

LEGEND

- EARTH EXCAVATION**
- STRUCTURE EXCAVATION**
- TEMPORARY SOIL RETENTION SYSTEM**

BILL OF MATERIAL

ITEM	UNIT	TOTAL
TEMPORARY SOIL RETENTION SYSTEM	SQ FT	703
STRUCTURE EXCAVATION	CY YD	29
EARTH EXCAVATION	CU YD	221

MODEL: Default
 FILE NAME: C:\pwworking\woodshank\1004427\66P61.dgn

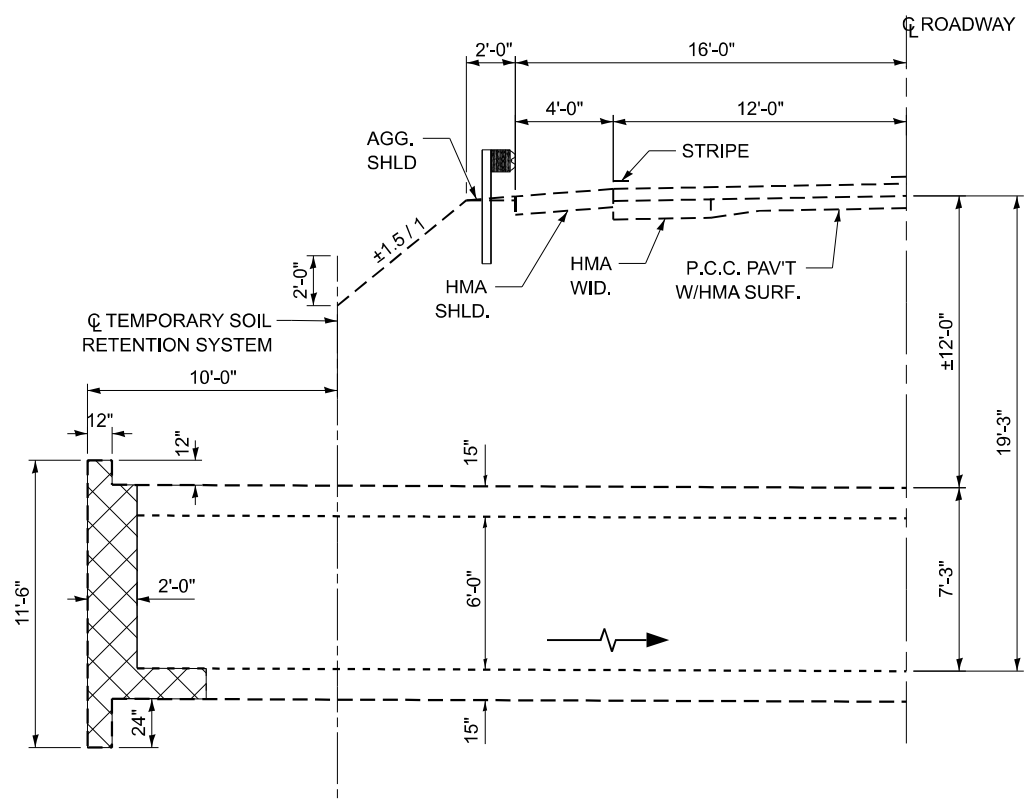
USER NAME = ronald.woodshank	DESIGNED - RW	REVISED -
	DRAWN - RW	REVISED -
	CHECKED - YP	REVISED -
PLOT DATE = 7/11/2024	DATE - 4/19/2024	REVISED -

STATE OF ILLINOIS
DEPARTMENT OF TRANSPORTATION

EXCAVATION DETAILS
FOR STRUCTURE NO. 006-2543

SCALE: SHEET 1 OF 1 SHEETS STA. TO STA.

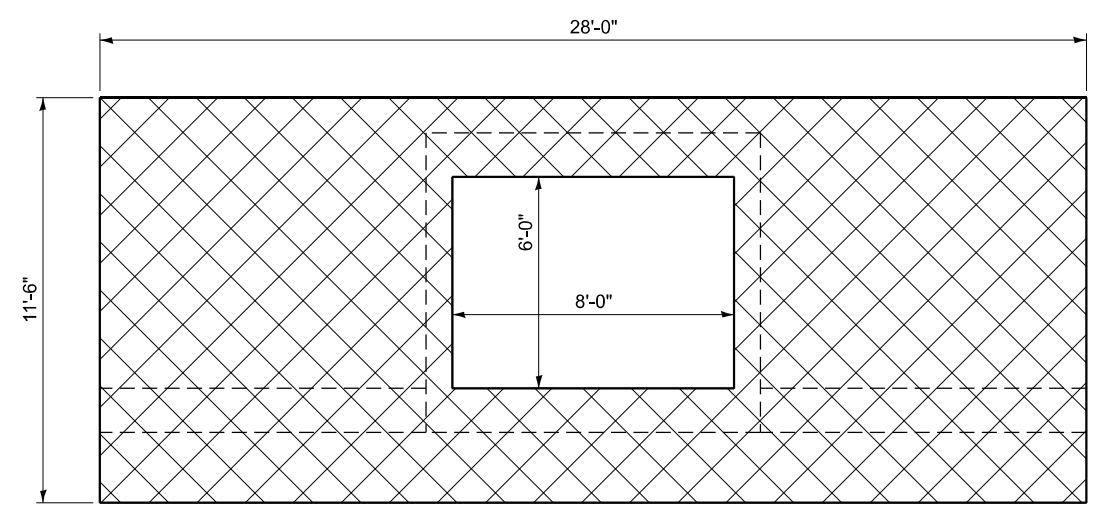
F.A.U. RTE.	SECTION	COUNTY	TOTAL SHEETS	SHEET NO.
5602	(R4)CLV	BUREAU	16	10
CONTRACT NO. 66P61				
ILLINOIS FED. AID PROJECT				



ELEVATION

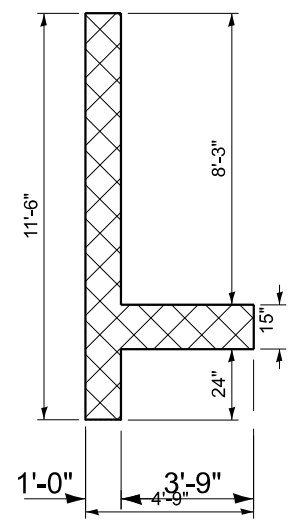
LEGEND

- CONCRETE REMOVAL**
- TEMPORARY SOIL RETENTION SYSTEM**

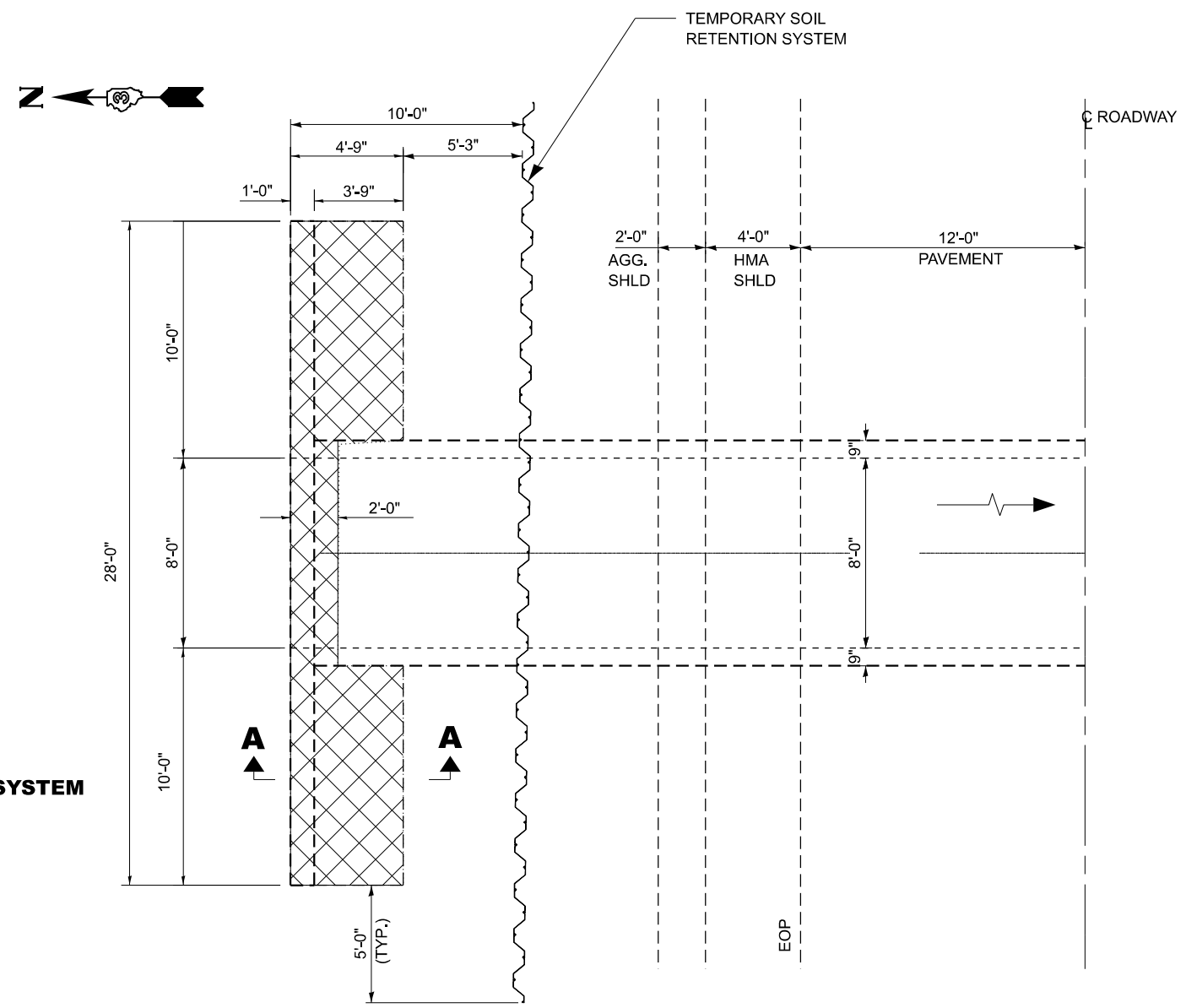


FRONT ELEVATION

NORTH END



END ELEVATION



**HALF PLAN
STRUCTURE NO. 006-2543**

BILL OF MATERIAL

ITEM	UNIT	TOTAL
CONCRETE REMOVAL	CU YD	16.2

MODEL: Default
FILE NAME: C:\pwworking\woodshank\100442766\F61.dgn

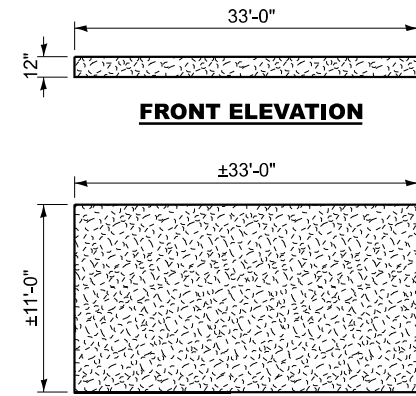
USER NAME = ronald.woodshank	DESIGNED - RW	REVISED -
	DRAWN - RW	REVISED -
	CHECKED - YP	REVISED -
PLOT DATE = 7/11/2024	DATE - 4/19/2024	REVISED -

**STATE OF ILLINOIS
DEPARTMENT OF TRANSPORTATION**

**CONCRETE REMOVAL DETAILS
FOR STRUCTURE NO. 006-2543**

SCALE: SHEET 1 OF 1 SHEETS STA. TO STA.

F.A.U. RTE.	SECTION	COUNTY	TOTAL SHEETS	SHEET NO.
5602	(R4)CLV	BUREAU	16	11
CONTRACT NO. 66P61				
ILLINOIS FED. AID PROJECT				

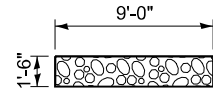


FRONT ELEVATION

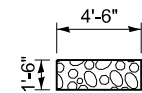
PLAN

SLOPE MATTRESS

11'-0" L X 33'-0" W X 12" H
1 REQUIRED



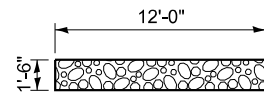
FRONT ELEVATION



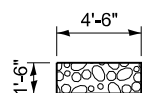
END ELEVATION

G4

9'-0" L X 4'-6" W X 1'-6" H
1 REQUIRED



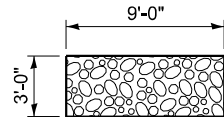
FRONT ELEVATION



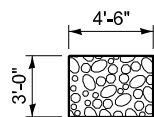
END ELEVATION

G3

12'-0" L X 4'-6" W X 1'-6" H
2 REQUIRED



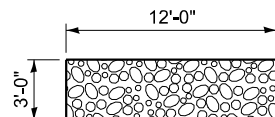
FRONT ELEVATION



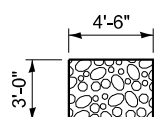
END ELEVATION

G2

9'-0" L X 4'-6" W X 3'-0" H
1 REQUIRED



FRONT ELEVATION

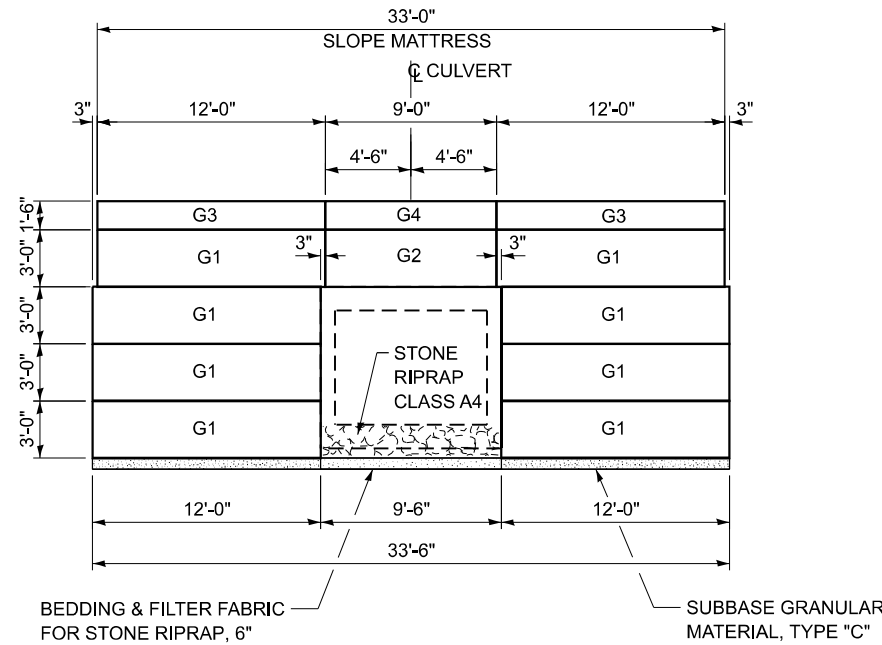


END ELEVATION

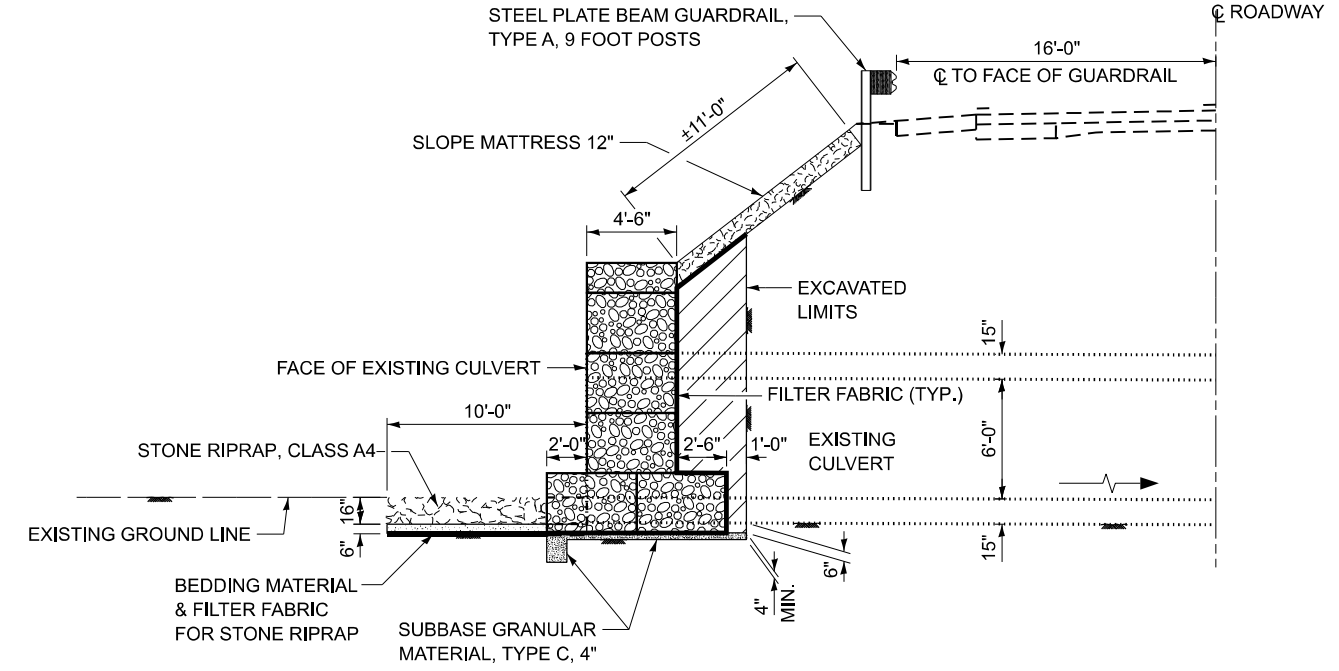
G1

12'-0" L X 4'-6" W X 3'-0" H
8 REQUIRED

GABIONS



FRONT ELEVATION



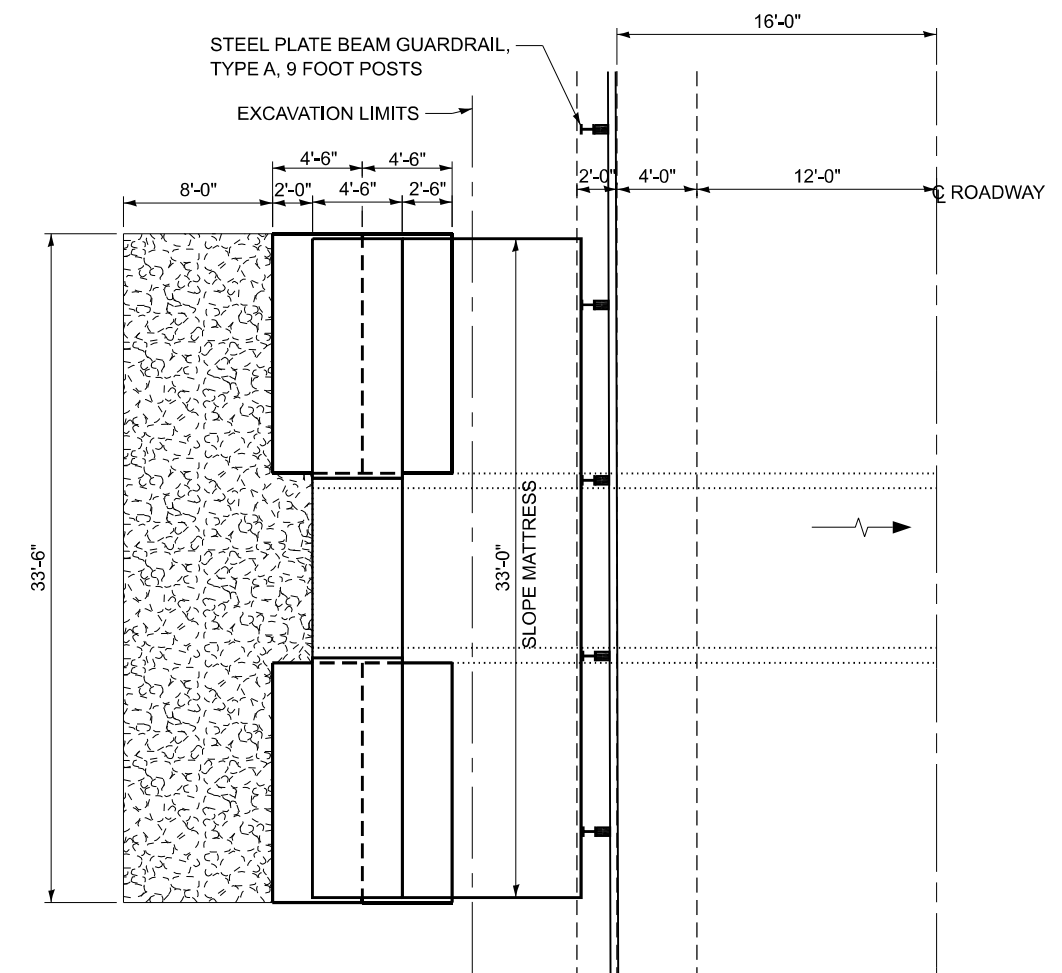
END ELEVATION

LEGEND

- FURNISHED EXCAVATION
- GABIONS
- SLOPE MATTRESS
- STONE RIPRAP, CLASS A4

TOTAL BILL OF MATERIAL

ITEM	UNIT	TOTAL
FURNISHED EXCAVATION	CU YD	72
GABIONS	CU YD	61
SLOPE MATTRESS 12"	SQ YD	40
FILTER FABRIC	SQ YD	137
SUBBASE GRANULAR MATERIAL, TYPE C	TON	8
STONE RIPRAP, CLASS A4	SQ YD	32



PLAN

MODEL: Default
FILE NAME: C:\pwworking\woodshank\100442766P61.dgn

USER NAME = ronald.woodshank	DESIGNED - RW	REVISED -
	DRAWN - RW	REVISED -
	CHECKED - YP	REVISED -
PLOT DATE = 7/11/2024	DATE - 4/19/2024	REVISED -

**STATE OF ILLINOIS
DEPARTMENT OF TRANSPORTATION**

GABION / SLOPE MATTRESS DETAILS

SCALE: SHEET 1 OF 1 SHEETS STA. TO STA.

F.A.U. RTE. 5602	SECTION (R4)CLV	COUNTY BUREAU	TOTAL SHEETS 16	SHEET NO. 12
CONTRACT NO. 66P61			ILLINOIS FED. AID PROJECT	



SOIL BORING LOG

Date _____

ROUTE FAU 5802 (IL 29) DESCRIPTION IL 29 over a Stream, 0.8 mi W of US 6/IL 89 in Spring Valley LOGGED BY Larry Myers

SECTION (R-4)CLV LOCATION SW 1/4, SEC. 28, TWP. 16N, RNG. 11E, 4th PM, Latitude 41.33498, Longitude -89.2339

COUNTY Bureau DRILLING METHOD Hollow Stem Auger HAMMER TYPE CME Automatic

STRUCT. NO. 006-2543 (Exist.) Station 296+85
 BORING NO. 1 (NE Quad.) Station 375+80 Offset 5.1 ft Lt.
 Ground Surface Elev. 634.50 ft

	D E P T H	B L O W S	U C S Qu	M O I S T %		D E P T H	B L O W S	U C S Qu	M O I S T %
Cored Bituminous/Concrete Pavement, Brown Silty Clay Loam Fill					612.50	2	2	2.0	29
						5	P		
Hard (Dense) Brown Silt with Organics and Some Dense Peat Layers					605.50	8	11	4.5	48
						11	P		
Stiff Dark Greenish Gray and Black Silty Clay/Silty Loam		3	2.0	25		2	5	4.0	80
		3	P			8	P		
		2				6			
		2	1.8	28		8	4.5	38	
		2	P			10	P		
Hard Gray Silty Clay Loam Till					-30	4			
		1	1.0	24		5	5.0	17	
		2	P			8	S		
		2				5			
		2	1.0	29		6	4.7	17	
		1	P			8	S		
					-35	6			
		2	1.0	24		8	5.0	14	
		2	P			8	S		
		1							
		2	1.0	29					
		2	P						
					614.50				
					-20				

The Unconfined Compressive Strength (UCS) Failure Mode is indicated by (B-Bulge, S-Shear, P-Penetrometer)
 The SPT (N value) is the sum of the last two blow values in each sampling zone (AASHTO T206)

BBS, form 137 (Rev. 8-99)



SOIL BORING LOG

Date _____

ROUTE FAU 5802 (IL 29) DESCRIPTION IL 29 over a Stream, 0.8 mi W of US 6/IL 89 in Spring Valley LOGGED BY Larry Myers

SECTION (R-4)CLV LOCATION SW 1/4, SEC. 28, TWP. 16N, RNG. 11E, 4th PM, Latitude 41.33498, Longitude -89.2339

COUNTY Bureau DRILLING METHOD Hollow Stem Auger HAMMER TYPE CME Automatic

STRUCT. NO. 006-2543 (Exist.) Station 296+85
 BORING NO. 1 (NE Quad.) Station 375+80 Offset 5.1 ft Lt.
 Ground Surface Elev. 634.50 ft

	D E P T H	B L O W S	U C S Qu	M O I S T %	
Hard Gray Silty Clay Loam Till (continued)					593.00
		8			
		10	6.4	15	
		19	S		
End of Boring					

The Unconfined Compressive Strength (UCS) Failure Mode is indicated by (B-Bulge, S-Shear, P-Penetrometer)
 The SPT (N value) is the sum of the last two blow values in each sampling zone (AASHTO T206)

BBS, form 137 (Rev. 8-99)

MODEL: Default
FILE NAME: C:\pwworkspace\woodshank\1004427066\61.dgn

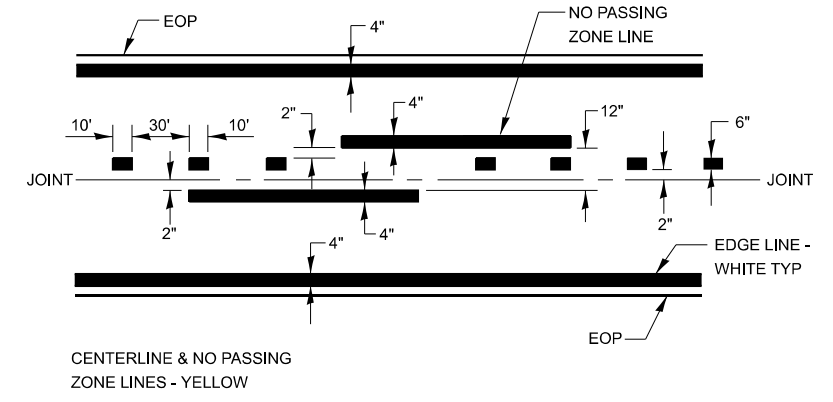
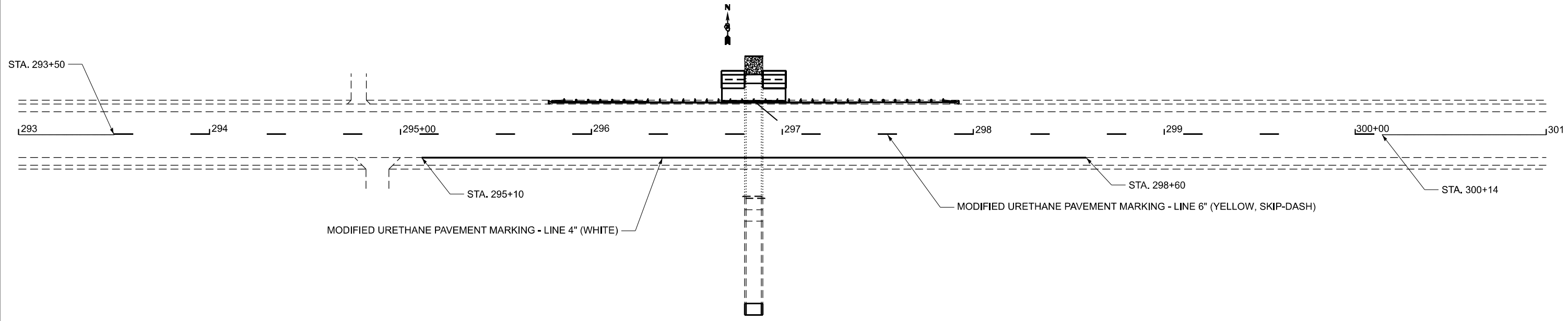
USER NAME = ronald.woodshank	DESIGNED - RW	REVISED -
	DRAWN - RW	REVISED -
	CHECKED - YP	REVISED -
DATE = 7/11/2024	DATE - 4/19/2024	REVISED -

STATE OF ILLINOIS
DEPARTMENT OF TRANSPORTATION

BORING LOGS
FOR STRUCTURE NO. 006-2543

SCALE: SHEET 1 OF 1 SHEETS STA. TO STA.

FA.U. RTE.	SECTION	COUNTY	TOTAL SHEETS	SHEET NO.
5602	(R4)CLV	BUREAU	16	13
CONTRACT NO. 66P61				
ILLINOIS FED. AID PROJECT				



PAVEMENT MARKING

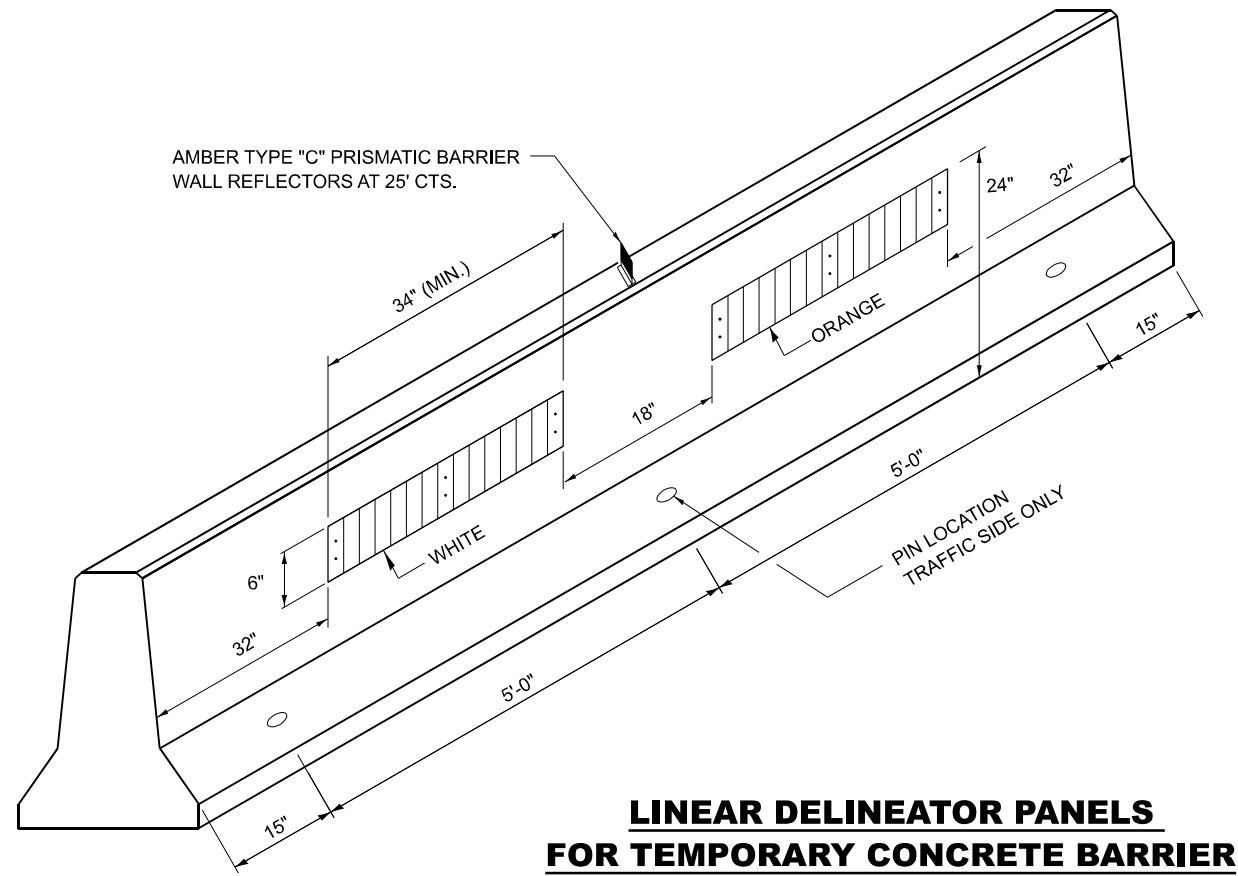
MODEL: Default
 FILE NAME: C:\pwwork\woodshank\1004427\66P61.dgn

USER NAME = ronald.woodshank	DESIGNED - RW	REVISED -
	DRAWN - RW	REVISED -
	CHECKED - YP	REVISED -
PLOT DATE = 7/11/2024	DATE - 4/19/2024	REVISED -

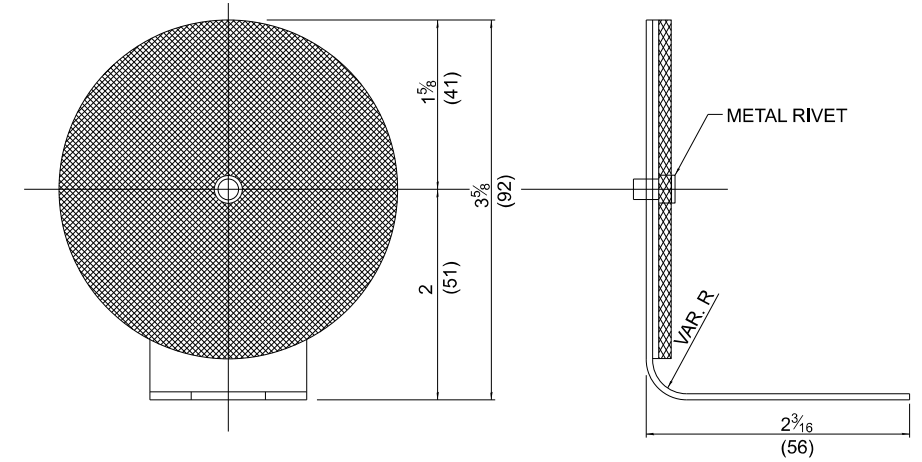
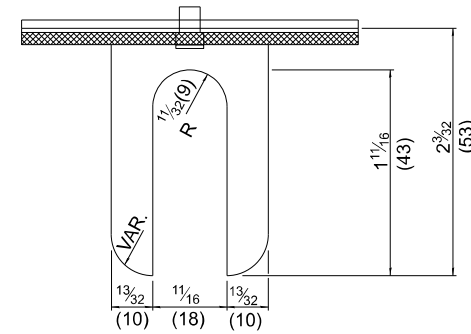
**STATE OF ILLINOIS
 DEPARTMENT OF TRANSPORTATION**

PAVEMENT MARKING DETAILS			
SCALE:	SHEET 1 OF 1 SHEETS	STA.	TO STA.

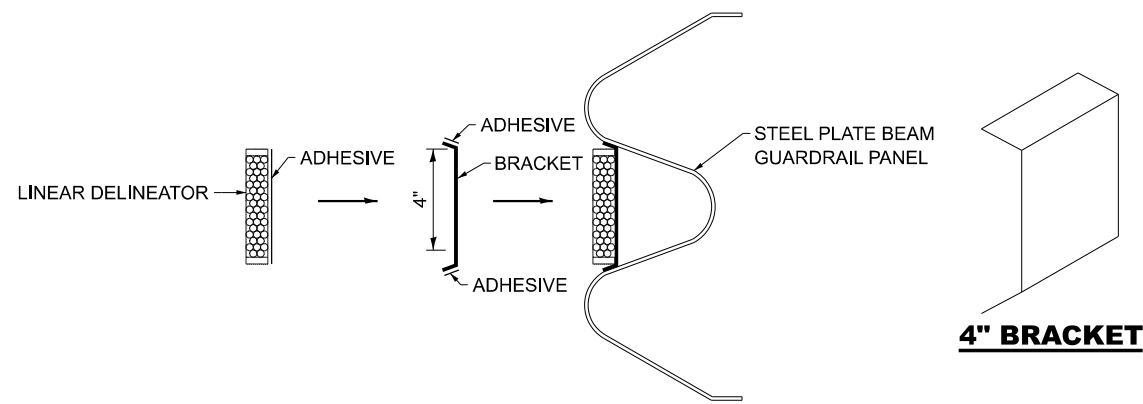
F.A.U. RTE.	SECTION	COUNTY	TOTAL SHEETS	SHEET NO.
5602	(R4)CLV	BUREAU	16	14
CONTRACT NO. 66P61				
ILLINOIS FED. AID PROJECT				



**LINEAR DELINEATOR PANELS
FOR TEMPORARY CONCRETE BARRIER**

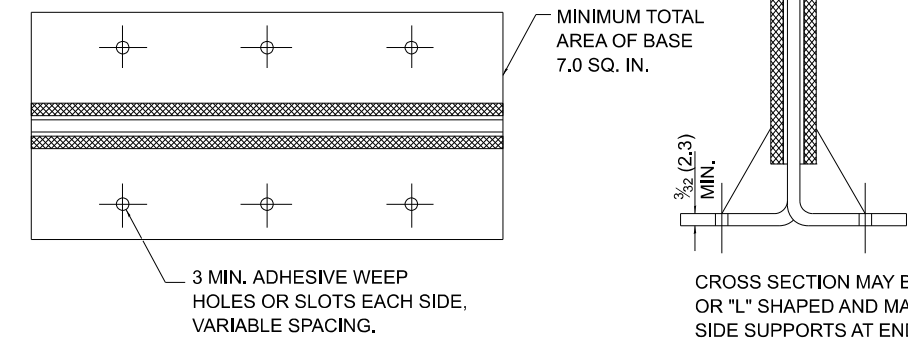
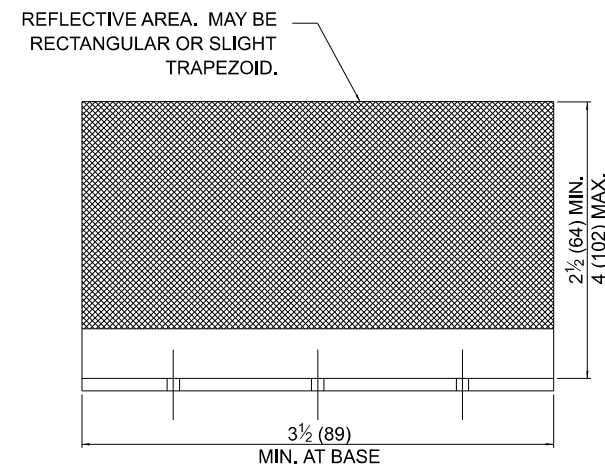


REFLECTOR TYPE A
(MONODIRECTIONAL SHOWN)
STEEL PLATE BEAM GUARDRAIL



**LINEATOR DELINEATOR APPLICATION TO
STANDARD GALVANIZED GUARDRAIL**

LINEATOR DELINEATOR SHALL BE APPLIED ACCORDING TO THE MANUFACTURER'S RECOMMENDATIONS



REFLECTOR TYPE C
TEMPORARY CONCRETE BARRAIER WALL

MODEL: Default
FILE NAME: C:\pwwork\woodshank\100427\66P61.dgn

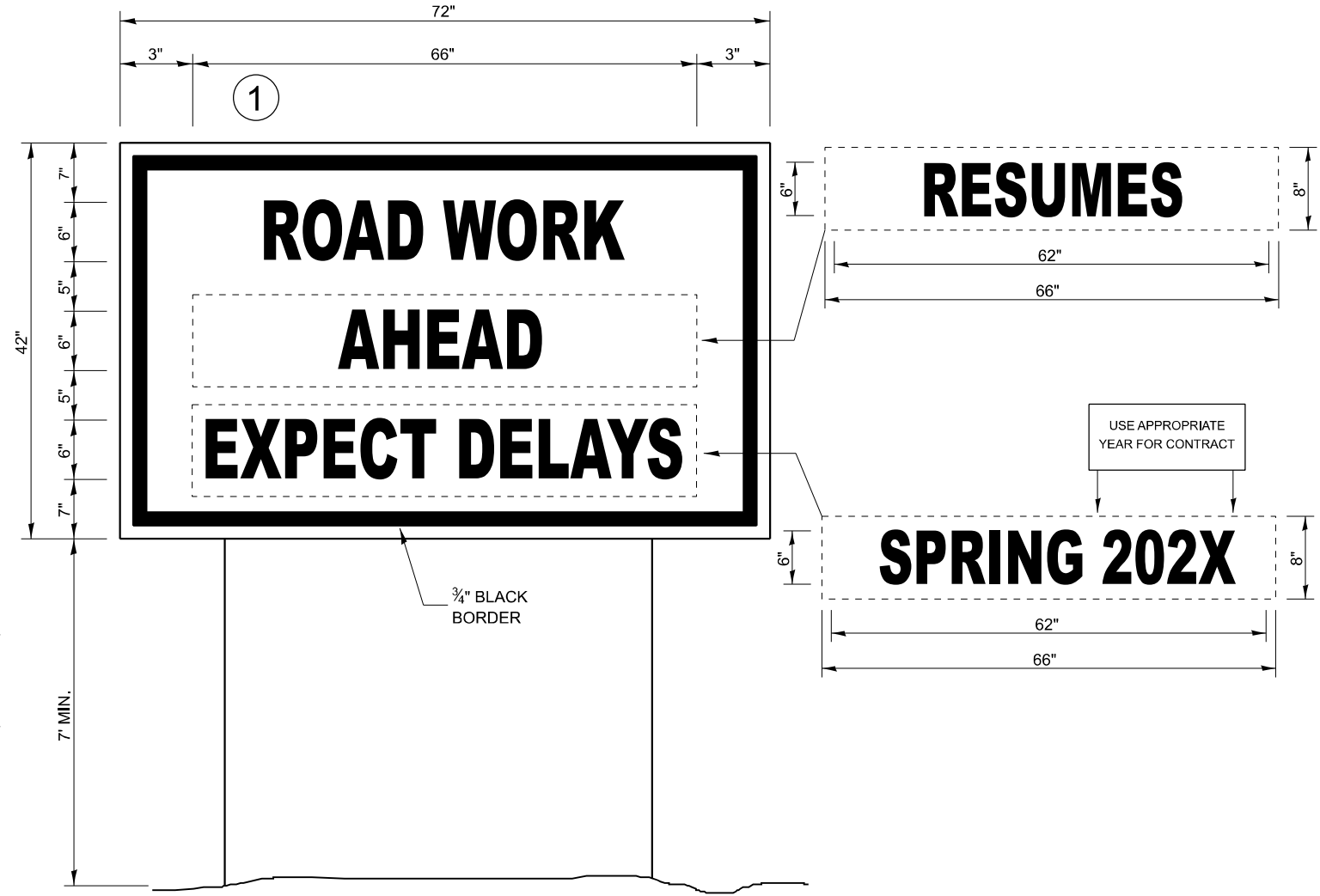
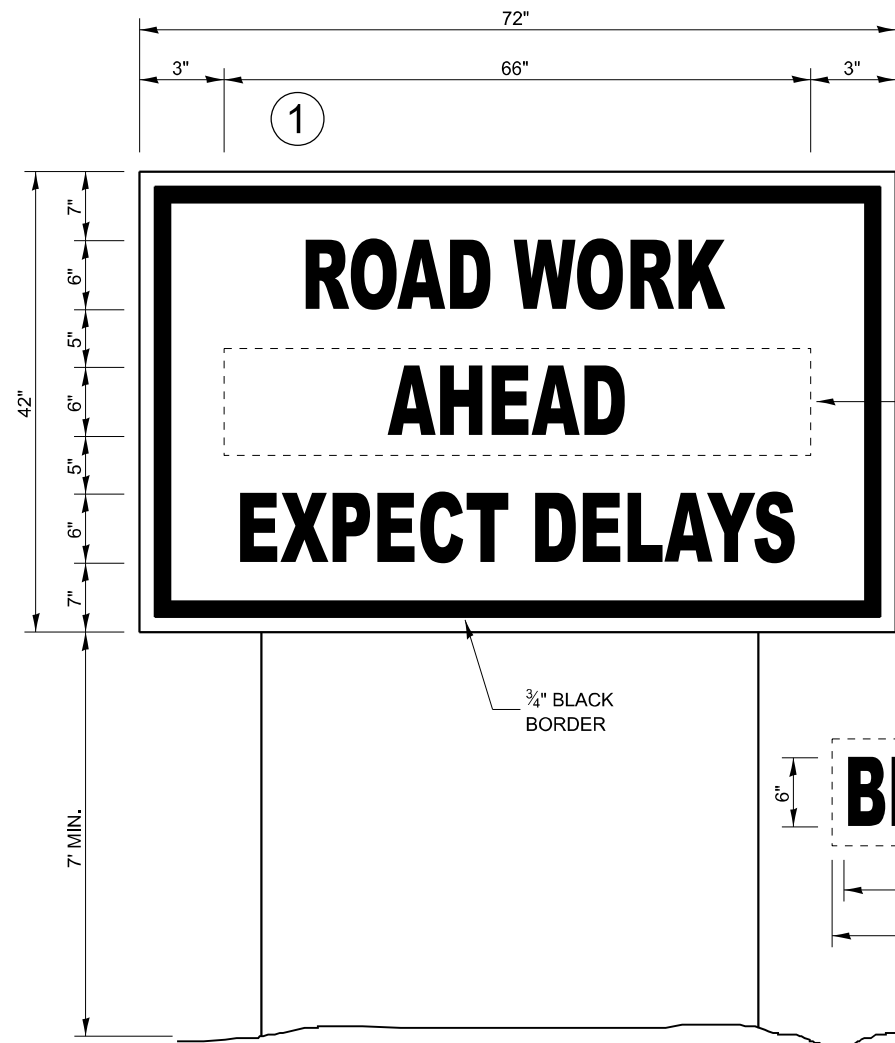
USER NAME = ronald.woodshank	DESIGNED - RW	REVISED -
	DRAWN - RW	REVISED -
	CHECKED - YP	REVISED -
PLOT DATE = 7/11/2024	DATE - 4/19/2024	REVISED -

**STATE OF ILLINOIS
DEPARTMENT OF TRANSPORTATION**

GUARDRAIL / BARRIER WALL DELINEATION DETAILS

SCALE: SHEET 1 OF 1 SHEETS STA. TO STA.

F.A.U. RTE. 5602	SECTION (R4)CLV	COUNTY BUREAU	TOTAL SHEETS 16	SHEET NO. 15
CONTRACT NO. 66P61				
ILLINOIS FED. AID PROJECT				



TEMPORARY INFORMATION SIGNING

WINTER SHUT DOWN SIGNING

NOTES:

1. USE 6" D BLACK LETTERING ON FLOURESENT ORANGE BACKGROUND.
2. ERECT SIGNS AT LOCATIONS IN ADVANCE OF THE "ROAD CONSTRUCTION AHEAD" SIGNS AS DIRECTED BY THE ENGINEER.
3. ERECT SIGN ① WITH INSTALLED PANEL ② A MINIMUM OF ONE WEEK PRIOR TO THE START OF THE LANE CLOSURE.
4. REMOVE PANEL ② ON THAT DATE.
5. SEE SPECIAL PROVISION "TEMPORARY INFORMATION SIGNING" FOR ADDITIONAL INFORMATION.
6. WILL BE PAID FOR PER SQ FT AS "TEMPORARY INFORMATION SIGNING". EACH SIGN = 21 SQ FT.

MODEL: Default
FILE NAME: c:\pwworking\woodshank\1004427166P61.dgn

USER NAME = ronald.woodshank	DESIGNED - RW	REVISED -	STATE OF ILLINOIS DEPARTMENT OF TRANSPORTATION	TEMPORARY INFORMATION SIGNING		F.A.U. RTE.	SECTION	COUNTY	TOTAL SHEETS	SHEET NO.
	DRAWN - RW	REVISED -				5602	(R4)CLV	BUREAU	16	16
PLOT DATE = 8/22/2024	CHECKED - YP	REVISED -		SCALE:	SHEET 1 OF 1 SHEETS	STA.	TO STA.	CONTRACT NO. 66P61		
DATE - 4/19/2024	REVISED -							ILLINOIS FED. AID PROJECT		