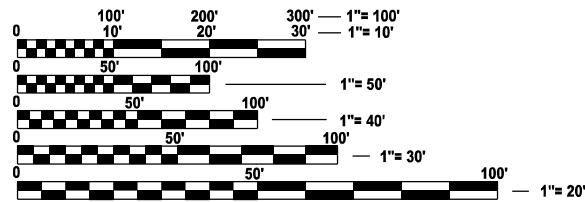


INDEX OF SHEETS

- 1. COVER SHEET
- 2. GENERAL NOTES
- 3 - 4. SUMMARY OF QUANTITIES
- 5. TYPICAL SECTION
- 6. SCHEDULES
- 7 - 8. TRAFFIC CONTROL AND PROTECTION, STANDARD 701321
- 9. TEMPORARY RUMBLE STRIPS (SPECIAL)
- 10. WIDTH RESTRICTION SIGNING
- 11. PAVEMENT MARKING DETAILS
- 12 - 18. STRUCTURE DETAILS
- 19. GUARDRAIL / BARRIER WALL DELINEATION DETAILS
- 20. TEMPORARY INFORMATION SIGNING

HIGHWAY STANDARDS

- 000001-08 STANDARD SYMBOLS, ABBREVIATIONS AND PATTERNS
- 001001-02 AREAS OF REINFORCEMENT BARS
- 001006 DECIMAL OF AN INCH AND OF A FOOT
- 701001-02 OFF-ROAD OPERATIONS 2L, 2W, MORE THAN 15' AWAY
- 701006-05 OFF-ROAD OPERATIONS 2L, 2W, 15' TO 24" FROM PAVEMENT EDGE
- 701201-05 LANE CLOSURE, 2L, 2W, DAY ONLY, FOR SPEEDS ≥ 45 MPH
- 701301-04 LANE CLOSURE, 2L, 2W, SHORT TIME OPERATIONS
- 701901-09 TRAFFIC CONTROL DEVICES
- 704001-08 TEMPORARY CONCRETE BARRIER
- 782006-01 GUARDRAIL AND BARRIER WALL REFLECTOR MOUNTING DETAILS



FULL SIZE PLANS HAVE BEEN PREPARED USING STANDARD ENGINEERING SCALES. REDUCED SIZED PLANS WILL NOT CONFORM TO STANDARD SCALES. IN MAKING MEASUREMENTS ON REDUCED PLANS, THE ABOVE SCALES MAY BE USED.

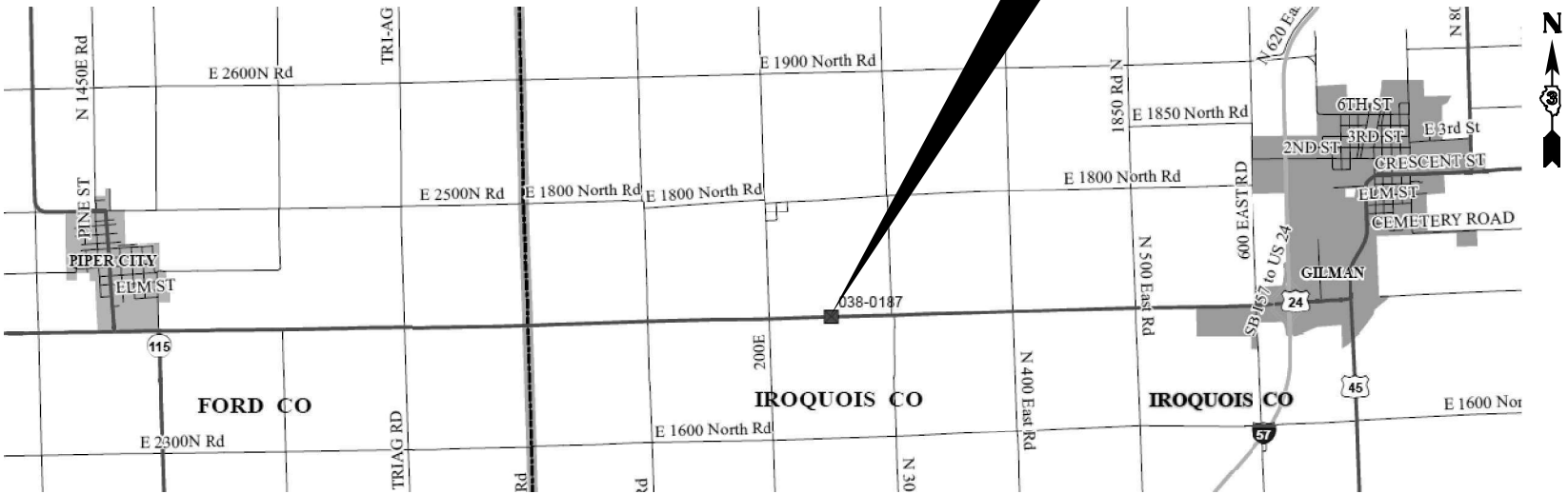
J.U.L.I.E.
JOINT UTILITY LOCATION INFORMATION FOR EXCAVATION
1-800-892-0123
OR 811

PROJECT ENGINEER: YOGESH PATEL P.E
UNIT CHIEF: RON WOODSHANK
DISTRICT NO. 3 (815) 434-6131
CONTRACT NO. 66P32

STATE OF ILLINOIS
DEPARTMENT OF TRANSPORTATION
**PROPOSED
HIGHWAY PLANS**
F.A.P. ROUTE 317 (US ROUTE 24)
SECTION (22BR-1)BRR
BRIDGE REPAIRS
IROQUOIS COUNTY
C-93-083-24

PROJECT LOCATION

STRUCTURE NO. 038-0187
F.A.P. ROUTE 317 (US 24)
SECTION (22BR-1)BRR
STA. 1431+15
3.74 MI. WEST OF I-57
IROQUOIS COUNTY



POINT LOCATION

F.A.P. RTE.	SECTION	COUNTY	TOTAL SHEETS	SHEET NO.
317	(22BR-1)BRR	IROQUOIS	20	1
		ILLINOIS	CONTRACT NO. 66P32	

D-93-046-24



FUNCTIONAL CLASSIFICATION
RURAL - OTHER PRINCIPAL ARTERIAL
F.A.P. ROUTE 317 (US ROUTE 24)
2021 ADT = 2850
P.V. 68.8 % S.U. 7.5 % M.U. 23.7 %

STATE OF ILLINOIS
DEPARTMENT OF TRANSPORTATION

SUBMITTED August 21, 2024
Trisha Thompson REGIONAL ENGINEER

October 4, 2024
S. E. A. E. K. ENGINEER OF DESIGN AND ENVIRONMENT

October 4, 2024
G. M. J. DIRECTOR OF HIGHWAYS PROJECT IMPLEMENTATION

PRINTED BY THE AUTHORITY
OF THE STATE OF ILLINOIS

GENERAL NOTES

ALL EXCAVATED MATERIAL, WHICH INCLUDES DIGGING OR GRADING OF ANY SOIL OR FILL MATERIAL, WITH THE EXCEPTION OF AGGREGATE FILLS, MUST BE INCORPORATED WITHIN THE IDOT RIGHT OF WAY.

THE FOLLOWING RATES OF APPLICATION HAVE BEEN USED IN CALCULATING PLAN QUANTITIES:

GRANULAR MATERIALS	2.05	TONS / CU YD
--------------------	------	--------------

COMMITMENTS

NONE.

STATE OF ILLINOIS
DEPARTMENT OF TRANSPORTATION
DISTRICT THREE
AS BUILT INFORMATION

SUPERVISING CONSTRUCTION FIELD ENGINEER

RESIDENT ENGINEER / TECHNICIAN

START & END DATES
OF CONSTRUCTION:

INSPECTORS:

MODEL: Default
FILE NAME: c:\pw_work\pwwd\woodshank\td097916168P32.dgn

	USER NAME = ronald.woodshank	DESIGNED - RW	REVISED -	STATE OF ILLINOIS DEPARTMENT OF TRANSPORTATION	GENERL NOTES			F.A.P. RTE.	SECTION	COUNTY	TOTAL SHEETS	SHEET NO.
		DRAWN - RW	REVISED -					317	(22BR-1)BRR	IROQUOIS	20	2
		CHECKED - YP	REVISED -					CONTRACT NO. 66P32				
	PLOT DATE = 6/26/2024	DATE - 4/2/2024	REVISED -		SCALE:	SHEET 1	OF 1 SHEETS	STA.	TO STA.	ILLINOIS FED. AID PROJECT		

MODEL: Default
FILE NAME: c:\pw_work\pwidth\woodshank\td097916168P32.dgn

CODE NO.	ITEM	UNIT	TOTAL QUANTITY	CONSTRUCTION CODE
				CONTRACT MAINTENANCE
				100% STATE
				BRIDGE
				0047
				S.N. 038-0187
50102400	CONCRETE REMOVAL	CU YD	15 . 3	15 . 3
50300255	CONCRETE SUPERSTRUCTURE	CU YD	15 . 3	15 . 3
50300300	PROTECTIVE COAT	SQ YD	76	76
50800205	REINFORCEMENT BARS, EPOXY COATED	POUND	3860	3860
50800530	MECHANICAL SPLICERS	EACH	222	222
67100100	MOBILIZATION	L SUM	1	1
70100450	TRAFFIC CONTROL AND PROTECTION, STANDARD 701201	L SUM	1	1
70106500	TEMPORARY BRIDGE TRAFFIC SIGNALS	EACH	1	1
70300100	SHORT TERM PAVEMENT MARKING	FOOT	76	76
70300150	SHORT TERM PAVEMENT MARKING REMOVAL	SQ FT	25	25
70400100	TEMPORARY CONCRETE BARRIER	FOOT	425	425
70400200	RELOCATE TEMPORARY CONCRETE BARRIER	FOOT	300	300
70600251	IMPACT ATTENUATORS, TEMPORARY (NON- REDIRECTIVE, NARROW), TEST LEVEL 3	EACH	2	2
70600352	IMPACT ATTENUATORS, RELOCATE (NON- REDIRECTIVE,NARROW), TEST LEVEL 3	EACH	2	2

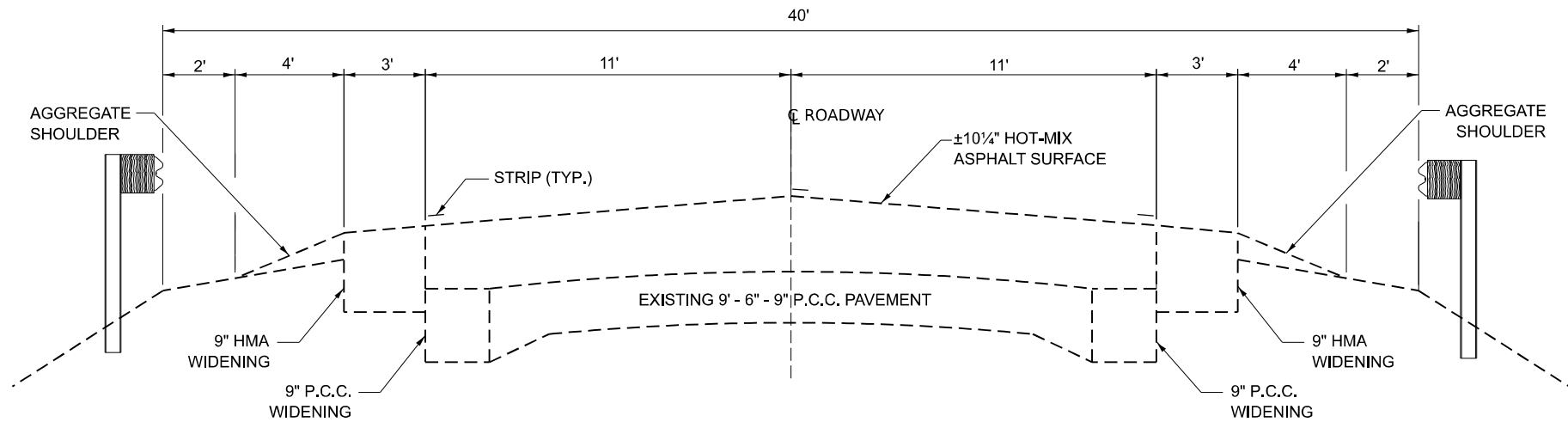
	USER NAME = ronald.woodshank	DESIGNED - RW	REVISED -	STATE OF ILLINOIS DEPARTMENT OF TRANSPORTATION	SUMMARY OF QUANTITIES			F.A.P. RTE.	SECTION	COUNTY	TOTAL SHEETS	SHEET NO.
		DRAWN - RW	REVISED -					317	(22BR-1)BRR	IROQUOIS	20	3
		CHECKED - YP	REVISED -					CONTRACT NO. 66P32				
	PLOT DATE = 6/26/2024	DATE - 4/2/2024	REVISED -		SCALE:	SHEET 1	OF 2 SHEETS	STA.	TO STA.	ILLINOIS FED. AID PROJECT		

MODEL: Default
FILE NAME: c:\pw_work\pwidth\woodshank\td097916168P32.dgn

CODE NO.	ITEM	UNIT	TOTAL QUANTITY	CONSTRUCTION CODE
				CONTRACT MAINTENANCE
				100% STATE
				BRIDGE
				0047
				S.N. 038-0187
* 78009004	MODIFIED URETHANE PAVEMENT MARKING - LINE 4"	FOOT	965	965
* 78009006	MODIFIED URETHANE PAVEMENT MARKING - LINE 6"	FOOT	190	190
78300202	PAVEMENT MARKING REMOVAL - WATER BLASTING	SQ FT	414	414
X5030225	CONCRETE STRUCTURES (SPECIAL)	CU YD	5	5
X5030530	FLOOR DRAIN EXTENSION	EACH	6	6
X7010118	TEMPORARY RUMBLE STRIPS (SPECIAL)	EACH	6	6
X7010202	TRAFFIC CONTROL AND PROTECTION, STANDARD 701321 (SPECIAL)	EACH	1	1
Z0016200	DECK SLAB REPAIR (PARTIAL)	SQ YD	33	33
Z0030850	TEMPORARY INFORMATION SIGNING	SQ FT	42	42
Z0073351	TEMPORARY SLAB SUPPORT SYSTEM	L SUM	1	1

*SPECIALITY ITEMS

	USER NAME = ronald.woodshank	DESIGNED - RW	REVISED -	STATE OF ILLINOIS DEPARTMENT OF TRANSPORTATION	SUMMARY OF QUANTITIES			F.A.P. RTE.	SECTION	COUNTY	TOTAL SHEETS	SHEET NO.
		DRAWN - RW	REVISED -					317	(22BR-1)BRR	IROQUOIS	20	4
		CHECKED - YP	REVISED -					CONTRACT NO. 66P32				
	PLOT DATE = 7/12/2024	DATE - 4/2/2024	REVISED -		SCALE:	SHEET 1	OF 2 SHEETS	STA.	TO STA.	ILLINOIS FED. AID PROJECT		



EXISTING TYPICAL SECTION

LOOKING EAST

MODEL: Default
FILE NAME: c:\pw_work\pwid\woodshank\td097916168P32.dgn

USER NAME = ronald.woodshank	DESIGNED - RW	REVISED -
	DRAWN - RW	REVISED -
	CHECKED - YP	REVISED -
PLOT DATE = 6/26/2024	DATE - 4/2/2024	REVISED -

STATE OF ILLINOIS
DEPARTMENT OF TRANSPORTATION

TYPICAL SECTIONS

SCALE: SHEET 1 OF 1 SHEETS STA. TO STA.

F.A.P. RTE.	SECTION	COUNTY	TOTAL SHEETS	SHEET NO.
317	(22BR-1)BRR	IROQUOIS	20	5
CONTRACT NO. 66P32				
ILLINOIS FED. AID PROJECT				

MODEL: Default
FILE NAME: c:\pw_work\pidd\woodshank\td097916168P32.dgn

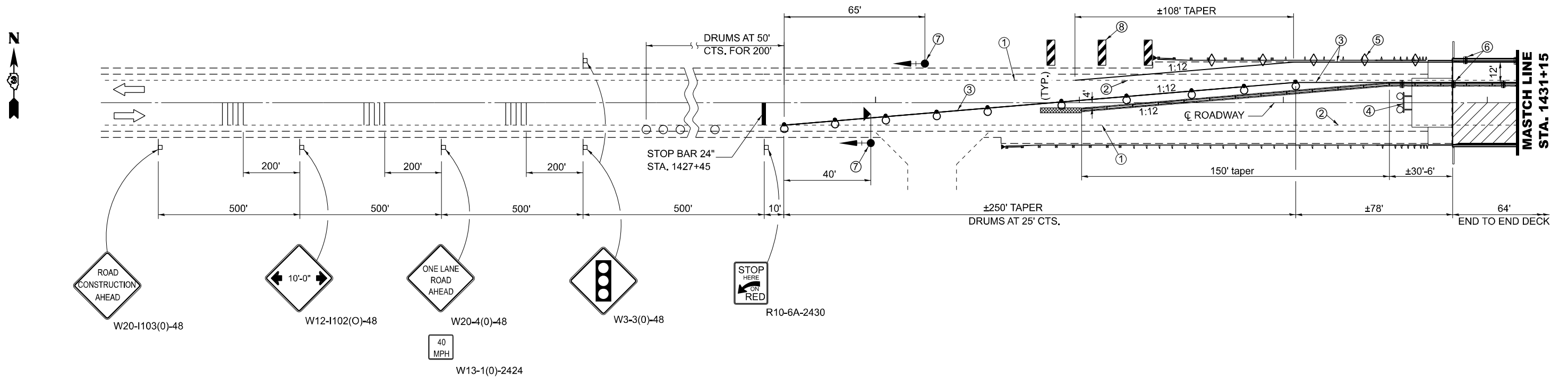
SCHEDULE - TRAFFIC CONTROL

LOCATION	TRAFFIC CONTROL AND PROTECTION STANDARD 701201	TRAFFIC CONTROL AND PROTECTION STANDARD 701321	TEMPORARY BRIDGE TRAFFIC SIGNALS	TEMPORARY RUMBLE STRIPS (SPECIAL)	TEMPORARY CONCRETE BARRIER	RELOCATE TEMPORARY CONCRETE BARRIER	IMPACT ATTENUATORS TEMPORARY NON-REDIRECTIVE NARROW TEST LEVEL 3	IMPACT ATTENUATORS RELOCATE NON-REDIRECTIVE NARROW TEST LEVEL 3
	L SUM	EACH	EACH	EACH	FOOT	FOOT	EACH	EACH
STAGE I	1	1	1	6	425		2	
STAGE II						300		2
TOTAL	1	1	1	6	425	300	2	2

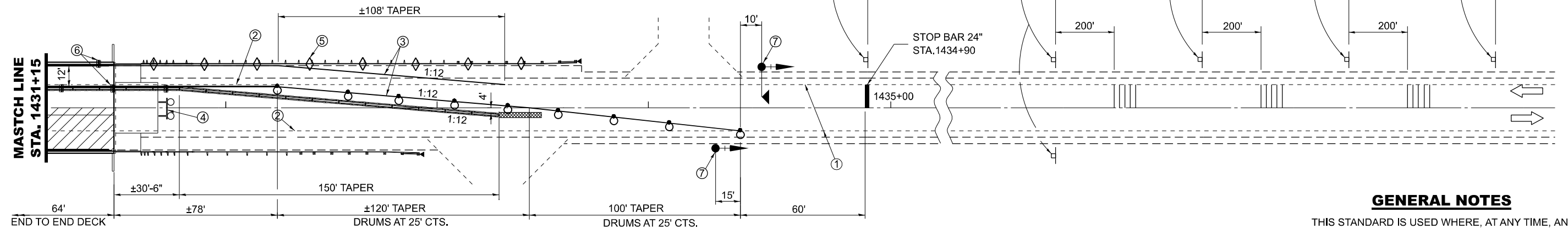
SCHEDULE - PAVEMENT MARKING

LOCATION	PAVEMENT MARKING REMOVAL WATERBLASTING	SHORT TERM PAVEMENT MARKING	SHORT TERM PAVEMENT MARKING REMOVAL	MODIFIED URETHANE PAVEMENT MARKING LINE 4"	MODIFIED URETHANE PAVEMENT MARKING LINE 6"
	SQ FT	FOOT	SQ FT	FOOT	FOOT
STAGE I	239				
STAGE II	175	76	25	965	190
TOTAL	414	76	25	965	190

MODEL: Default
FILE NAME: c:\pwwork\woodshank\14079161\66P32.dgn

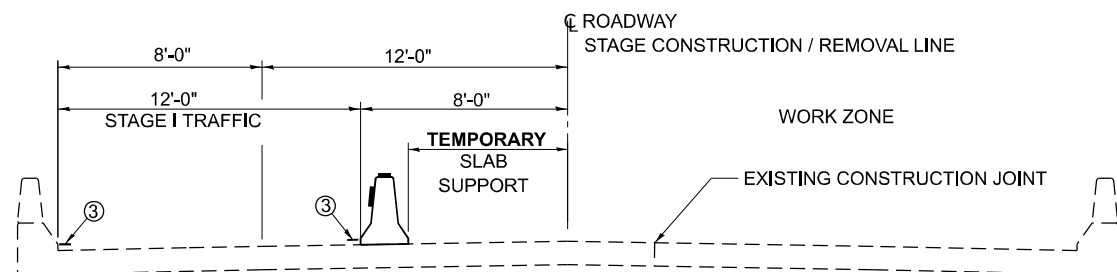


- ① EXISTING PAVEMENT MARKING (EDGE LINE)
② PAVEMENT MARKING REMOVAL
③ TEMPORARY PAVEMENT MARKING
④ TYPE III BARRICADE TO BE PLACED WHEN NO WORK IS BEING PERFORMED.
⑤ GUARDRAIL REFLECTORS, TYPE "A" AT 25' CTS.
⑥ BARRIER WALL REFLECTORS TYPE "C" AT 25' CTS. SEE TEMPORARY CONCRETE BARRIER WALL DETAILS AND STANDARDS 704001 & 782006.
⑦ THE EDGE OF THE POST MOUNTED SIGNAL HEAD SHALL BE BETWEEN 24" AND 6" FROM EDGE OF SHOULDER.
⑧ VERTICAL PANELS AT 25' CTS. THROUGHOUT LANE SHIFT. THESE DEVICES MAY BE OMITTED WHEN THE GUARDRAIL WITH REFLECTORS EXTENDS TO AT LEAST THIS POINT ON THE TAPER.



SYMBOLS

- WORK AREA
SIGN
TYPE III BARRICADE WITH FLASHING LIGHTS
IMPACT ATTENUATOR
DRUM (TANGENT ONLY)
TRAFFIC SIGNAL WITH BACK PLATE AND MICROWAVE DETECTOR
DRUM WITH STEADY BURNING BI-DIRECTIONAL LIGHT (TAPER ONLY)
TEMPORARY CONCRETE BARRIER
TEMPORARY RUMBLE STRIP (SPECIAL)
BARRIER WALL REFLECTOR, TYPE "C"
CRYSTAL, BIDIRECTIONAL GUARDRAIL/BARRIER WALL REFLECTOR
TRAFFIC SIGNAL WITH BACK PLATE



GENERAL NOTES

THIS STANDARD IS USED WHERE, AT ANY TIME, ANY VEHICLE, EQUIPMENT, WORKERS, OR THEIR ACTIVITIES WILL ENCROACH ON ONE LANE OF A BRIDGE. TRAFFIC SIGNALS AND A POSITIVE BARRIER ARE REQUIRED.

TRAFFIC SIGNALS SHALL BE OPERATIONAL ONLY WHEN ALL TRAFFIC CONTROLS ARE IN PLACE. WHEN TRAFFIC SIGNALS ARE NOT IN OPERATION, FLAGGERS SHALL BE USED AND TRAFFIC CONTROL SHALL CONFORM TO STANDARD 701201 OR 701206.

TEMPORARY CONCRETE BARRIER SHALL BE ACCORDING TO STANDARD 704001.

EXISTING OR TEMPORARY PAVEMENT MARKINGS SHALL BE ON BOTH SIDES OF OPEN LANE FROM STOP BAR TO STOP BAR.

USER NAME = ronald.woodshank	DESIGNED - RW	REVISED -
	DRAWN - RW	REVISED -
	CHECKED - YP	REVISED -
PLOT DATE = 6/26/2024	DATE - 4/2/2024	REVISED -

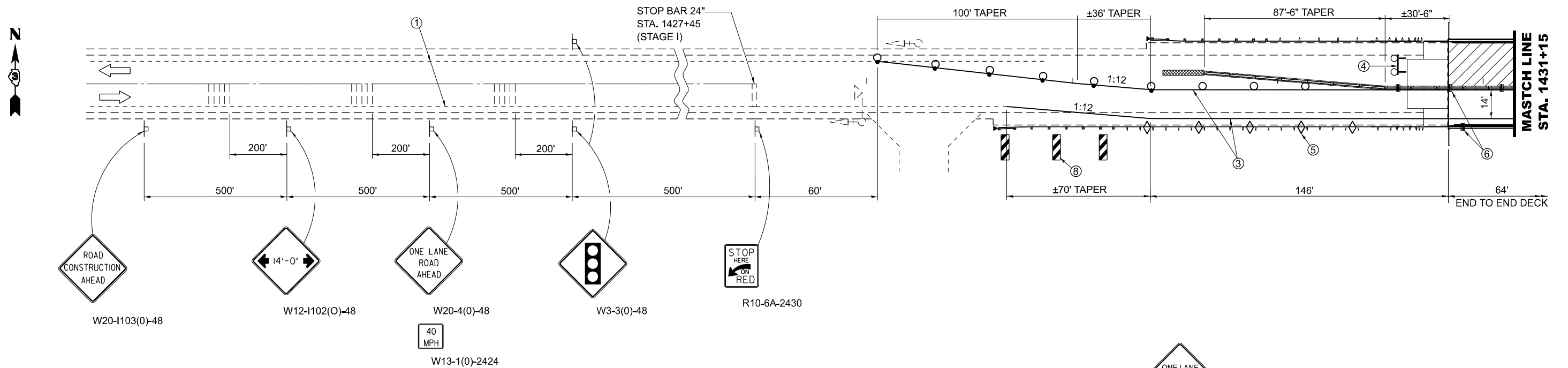
STATE OF ILLINOIS
DEPARTMENT OF TRANSPORTATION

TRAFFIC CONTROL AND PROTECTION, STANDARD 701321 (SPECIAL)
STAGE I

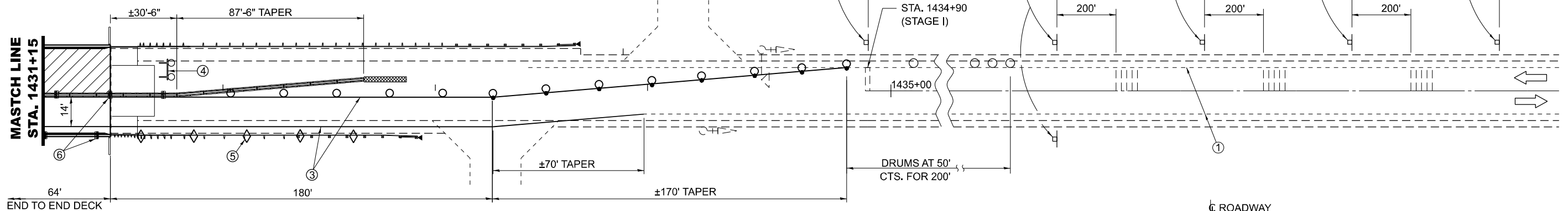
SCALE: SHEET 1 OF 1 SHEETS STA. TO STA.

F.A.P. RTE. 317	SECTION (22BR-1)BRR	COUNTY IROQUOIS	TOTAL SHEETS 20	SHEET NO. 7
CONTRACT NO. 66P32				
ILLINOIS FED. AID PROJECT				

MODEL: Default
FILE NAME: c:\pwwork\woodshank\td0979161168P32.dgn

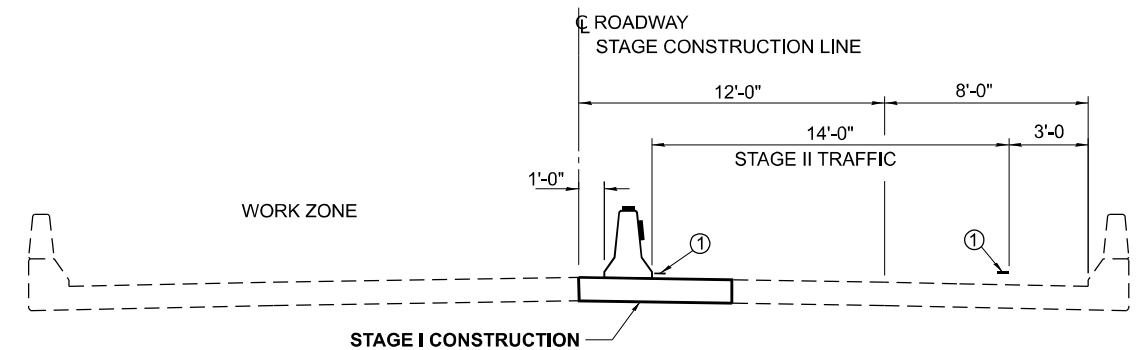


- ① EXISTING PAVEMENT MARKING (EDGE LINE)
- ② PAVEMENT MARKING REMOVAL
- ③ TEMPORARY PAVEMENT MARKING
- ④ TYPE III BARRICADE TO BE PLACED WHEN NO WORK IS BEING PERFORMED.
- ⑤ GUARDRAIL REFLECTORS, TYPE "A" AT 25' CTS.
- ⑥ BARRIER WALL REFLECTORS TYPE "C" AT 25' CTS. SEE TEMPORARY CONCRETE BARRIER WALL DETAILS AND STANDARDS 704001 & 782006.
- ⑦ THE EDGE OF THE POST MOUNTED SIGNAL HEAD SHALL BE BETWEEN 24" AND 6" FROM EDGE OF SHOULDER.
- ⑧ VERTICAL PANELS AT 25' CTS. THROUGHOUT LANE SHIFT. THESE DEVICES MAY BE OMITTED WHEN THE GUARDRAIL WITH REFLECTORS EXTENDS TO AT LEAST THIS POINT ON THE TAPER.



SYMBOLS

	WORK AREA		DRUM WITH STEADY BURNING BI-DIRECTIONAL LIGHT (TAPER ONLY)
	SIGN		TEMPORARY CONCRETE BARRIER
	TYPE III BARRICADE WITH FLASHING LIGHTS		TEMPORARY RUMBLE STRIP (SPECIAL) (INSTALLED IN STAGE I)
	IMPACT ATTENUATOR		BARRIER WALL REFLECTOR, TYPE "C"
	DRUM (TANGENT ONLY)		CRYSTAL, BIDIRECTIONAL GUARDRAIL/BARRIER WALL REFLECTOR
	TRAFFIC SIGNAL WITH BACK PLATE AND MICROWAVE DETECTOR (INSTALLED IN STAGE I)		TRAFFIC SIGNAL WITH BACK PLATE (INSTALLED IN STAGE I)



USER NAME = ronald.woodshank	DESIGNED - RW	REVISED -
	DRAWN - RW	REVISED -
	CHECKED - YP	REVISED -
PLOT DATE = 6/26/2024	DATE - 4/2/2024	REVISED -

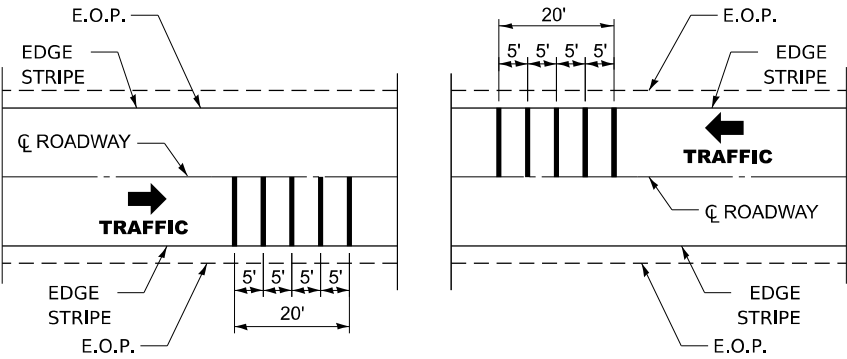
STATE OF ILLINOIS
DEPARTMENT OF TRANSPORTATION

TRAFFIC CONTROL AND PROTECTION, STANDARD 701321 (SPECIAL)
STAGE II

SCALE: SHEET 1 OF 2 SHEETS STA. TO STA.

F.A.P. RTE. 317	SECTION (22BR-1)BRR	COUNTY IROQUOIS	TOTAL SHEETS 20	SHEET NO. 8
CONTRACT NO. 66P32				
ILLINOIS FED. AID PROJECT				

MODEL: Default
FILE NAME: c:\pw_work\pwidth\woodshank\td0979161\66P32.dgn

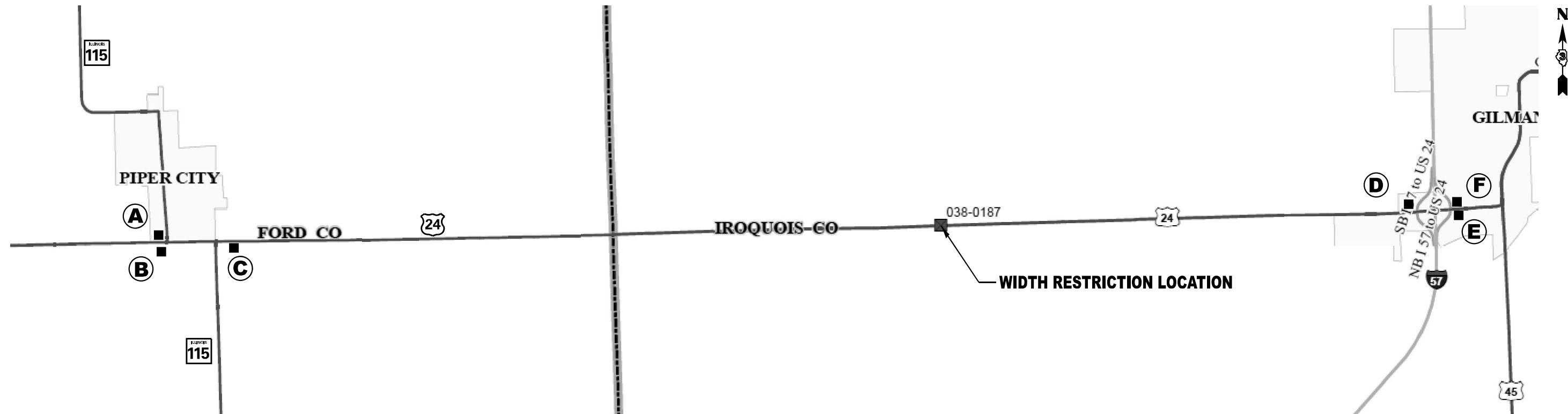


TEMPORARY RUMBLE STRIPS (SPECIAL)
FOR PAYMENT PURPOSES, EACH LANE SHALL BE CONSIDERED "ONE EACH"

TO BE USED WITH TRAFFIC CONTROL AND PROTECTION, STANDARD 701321
FOR 2L, 2W HIGHWAYS

	USER NAME = ronald.woodshank	DESIGNED - RW	REVISED -	STATE OF ILLINOIS DEPARTMENT OF TRANSPORTATION	TEMPORARY RUMBLE STRIPS (SPECIAL)			F.A.P. RTE.	SECTION	COUNTY	TOTAL SHEETS	SHEET NO.
		DRAWN - RW	REVISED -					317	(22BR-1)BRR	IROQUOIS	20	9
		CHECKED - YP	REVISED -					CONTRACT NO. 66P32				
	PLOT DATE = 6/26/2024	DATE - 4/2/2024	REVISED -		SCALE:	SHEET 1	OF 1 SHEETS	STA.	TO STA.	ILLINOIS FED. AID PROJECT		

MODEL: Default
FILE NAME: c:\pwwork\woodshank\td097916168P32.dgn



A

MAX WIDTH
10' - 6"
6 MILES
AHEAD

W12-I103-4848

←

M6-1(O) 21"X15"

B

MAX WIDTH
10' - 6"
6 MILES
AHEAD

W12-I103-4848

↑

M6-3(O) 21"X15"

C

MAX WIDTH
10' - 6"
6 MILES
AHEAD

W12-I103-4848

→

M6-1(O) 21"X15"

D

MAX WIDTH
10' - 6"
6 MILES
AHEAD

W12-I103-4848

→

M6-1(O) 21"X15"

E

MAX WIDTH
10' - 6"
6 MILES
AHEAD

W12-I103-4848

←

M6-1(O) 21"X15"

F

MAX WIDTH
10' - 6"
6 MILES
AHEAD

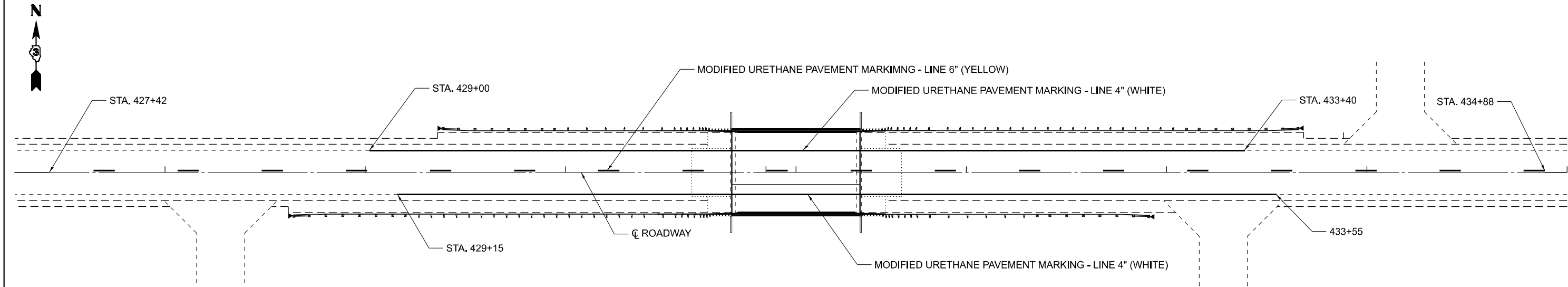
W12-I103-4848

↑

M6-3(O) 21"X15"

	USER NAME = ronald.woodshank	DESIGNED - RW	REVISED -	STATE OF ILLINOIS DEPARTMENT OF TRANSPORTATION	WIDTH RESTRICTION SIGNING			F.A.P. RTE.	SECTION	COUNTY	TOTAL SHEETS	SHEET NO.
		DRAWN - RW	REVISED -					317	(22BR-1)BRR	IROQUOIS	20	10
		CHECKED - YP	REVISED -					CONTRACT NO. 66P32				
	PLOT DATE = 6/26/2024	DATE - 4/2/2024	REVISED -		SCALE:	SHEET 1	OF 1	SHEETS	STA.	TO STA.	ILLINOIS	FED. AID PROJECT

MODEL: Default
FILE NAME: c:\pw_work\pwwd\woodshank\td097916168P32.dgn



	USER NAME = ronald.woodshank	DESIGNED - RW	REVISED -	STATE OF ILLINOIS DEPARTMENT OF TRANSPORTATION	PAVEMENT MARKING DETAILS			F.A.P. RTE.	SECTION	COUNTY	TOTAL SHEETS	SHEET NO.
		DRAWN - RW	REVISED -					317	(22BR-1)BRR	IROQUOIS	20	11
		CHECKED - YP	REVISED -					CONTRACT NO. 66P32				
	PLOT DATE = 6/26/2024	DATE - 4/2/2024	REVISED -		SCALE:	SHEET 1 OF 1 SHEETS	STA.	TO STA.	ILLINOIS	FED. AID PROJECT		

GENERAL NOTES

PLAN DIMENSIONS AND DETAILS RELATIVE TO THE EXISTING STRUCTURE HAVE BEEN TAKEN FROM EXISTING PLANS ARE SUBJECT TO NOMINAL CONSTRUCTION VARIATIONS. THE CONTRACTOR SHALL FIELD VERIFY EXISTING DIMENSIONS AND DETAILS AFFECTING NEW CONSTRUCTION AND MAKE NECESSARY APPROVED ADJUSTMENTS PRIOR TO CONSTRUCTION OR ORDERING OF MATERIALS. SUCH VARIATIONS SHALL NOT BE CAUSE FOR ADDITIONAL COMPENSATION FOR A CHANGE IN SCOPE OF THE WORK, HOWEVER, THE CONTRACTOR WILL BE PAID FOR THE QUANTITY ACTUALLY FURNISHED AT THE UNIT PRICE BID FOR THE WORK.

REINFORCEMENT BARS DESIGNATED (E) SHALL BE EPOXY COATED.

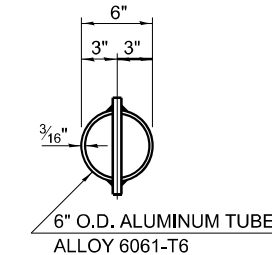
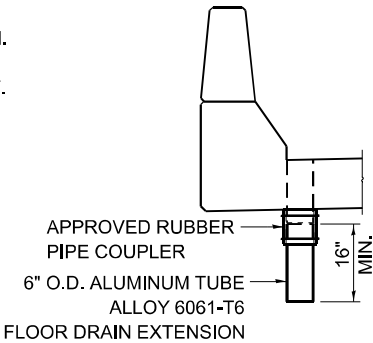
PROTECTIVE COAT SHALL BE APPLIED TO ALL NEW CONCRETE SURFACES.

EXISTING REINFORCEMENT SHALL BE CLEANED, STRAIGHTENED AND INCORPORATED INTO THE NEW CONSTRUCTION, COST INCLUDED WITH CONCRETE REMOVAL.

DESCRIPTION OF WORK

- 1. REMOVE AND REPLACE CONCRETE ADJACENT TO EXISTING CONSTRUCTION JOINT.
- 2. DECK SLAB REPAIR (PARTIAL) AT EXISTING JOINT AT ABUTMENTS.
- 3. FURNISH AND INSTALL TEMPORARY SLAB SUPPORT SYSTEM.
- 4. REPAIR (FILL) EXISTING VOID UNDER THE WEST ABUTMENT.
- 5. EXTEND EXISTING FLOOR DRAINS.

REPAIRED VOID



SECTION THRU PARAPET

EXISTING TOP PLAN

FLOOR DRAIN EXTENSION

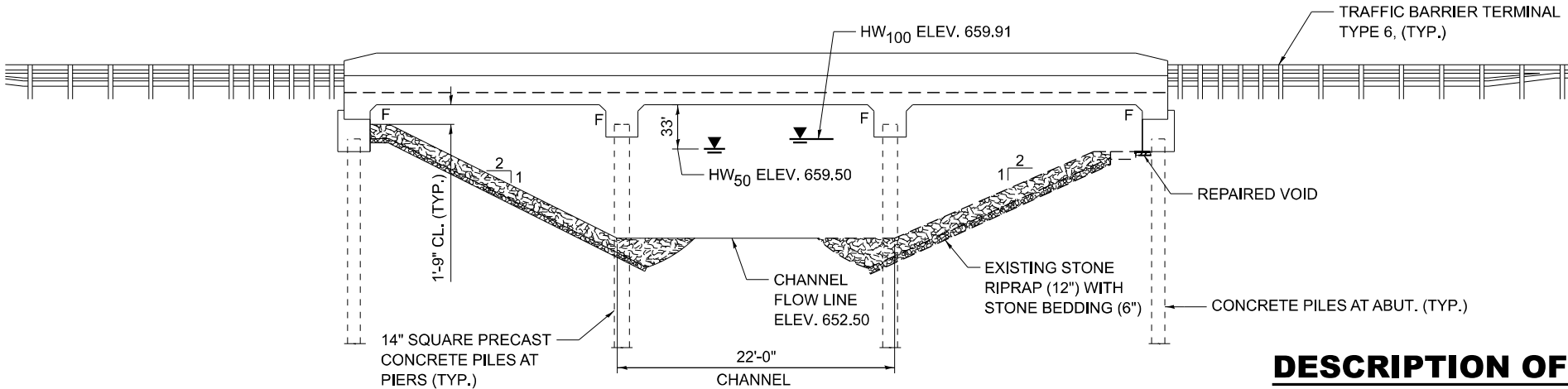
TOTAL BILL OF MATERIAL

ITEM	UNIT	TOTAL
CONCRETE REMOVAL	CU YDS	15.3
CONCRETE SUPERSTRUCTURE	CU YDS	15.3
REINFORCEMENT BARS, EPOXY COATED	POUND	3860
PROTECTIVE COAT	SQ YDS	76
MECHANICAL SPLICERS	EACH	222
TEMPORARY SLAB SUPPORT SYSTEM	L SUM	1
DECK SLAB REPAIR (PARTIAL)	SQ YD	33
CONCRETE STRUCTURES (SPECIAL)	CU YD	5
FLOOR DRAIN EXTENSION	EACH	6

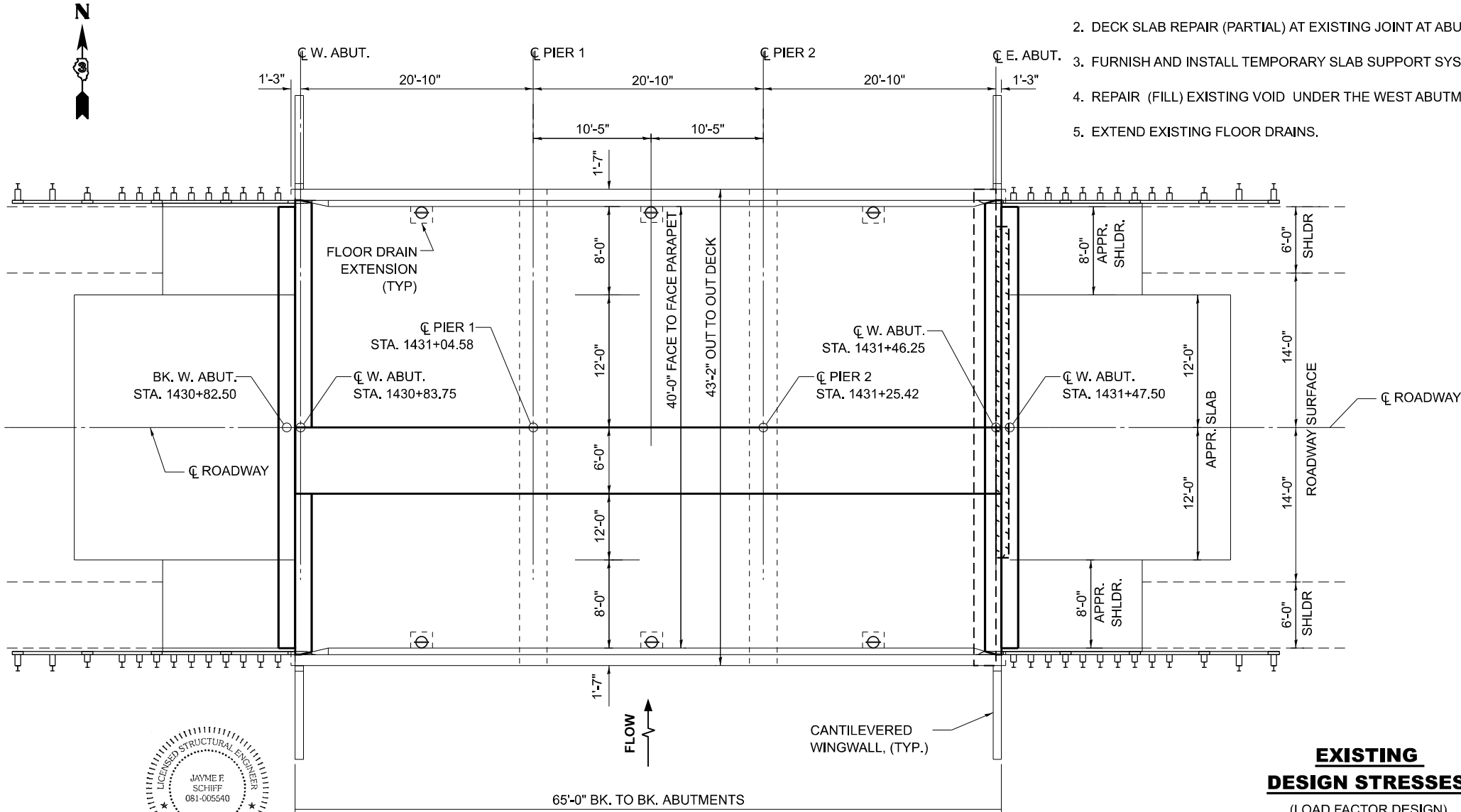
EXISTING DESIGN STRESSES

(LOAD FACTOR DESIGN)
f_c = 3500 psi
f_y = 60,000 psi

DESIGN LOADING: HS20-44 WITH ALLOWANCE FOR 25 psf FURURE WEARING SURFACE.
DESIGN SPECIFICATIONS: 1983 AASHTO WITH 1984 & 1985 INTERM SPECS.



ELEVATION

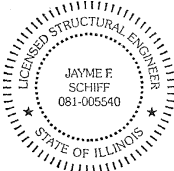


PLAN

STRUCTURE NO. 038-0187

EXPIRES 11-30-2024

Jayne F. Schiff



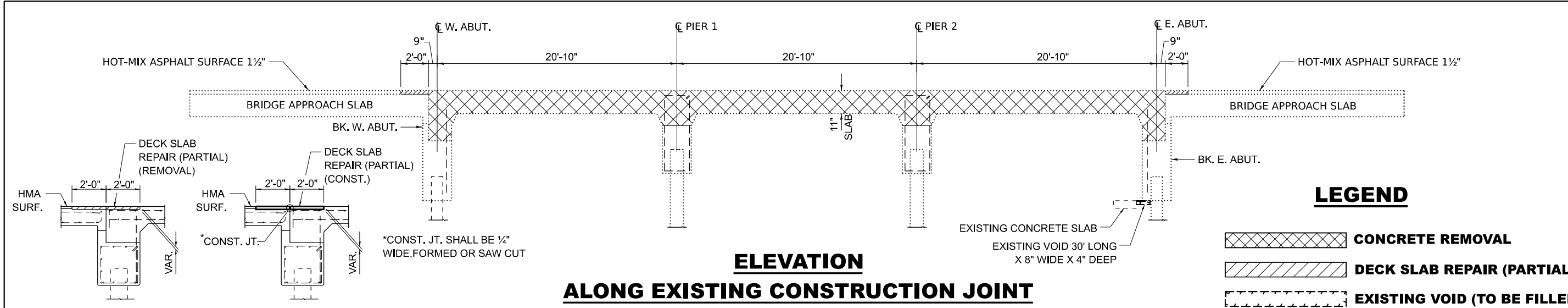
USER NAME	ronald.woodshank	DESIGNED	-	RW	REVISED	-
		DRAWN	-	RW	REVISED	-
		CHECKED	-	YP	REVISED	-
PLOT DATE	6/26/2024	DATE	-	4/2/2024	REVISED	-

STATE OF ILLINOIS
DEPARTMENT OF TRANSPORTATION

GENERAL PLAN AND ELEVATION
STRUCTURE NO. 038-0187

SCALE: SHEET 1 OF 6 SHEETS STA. TO STA.

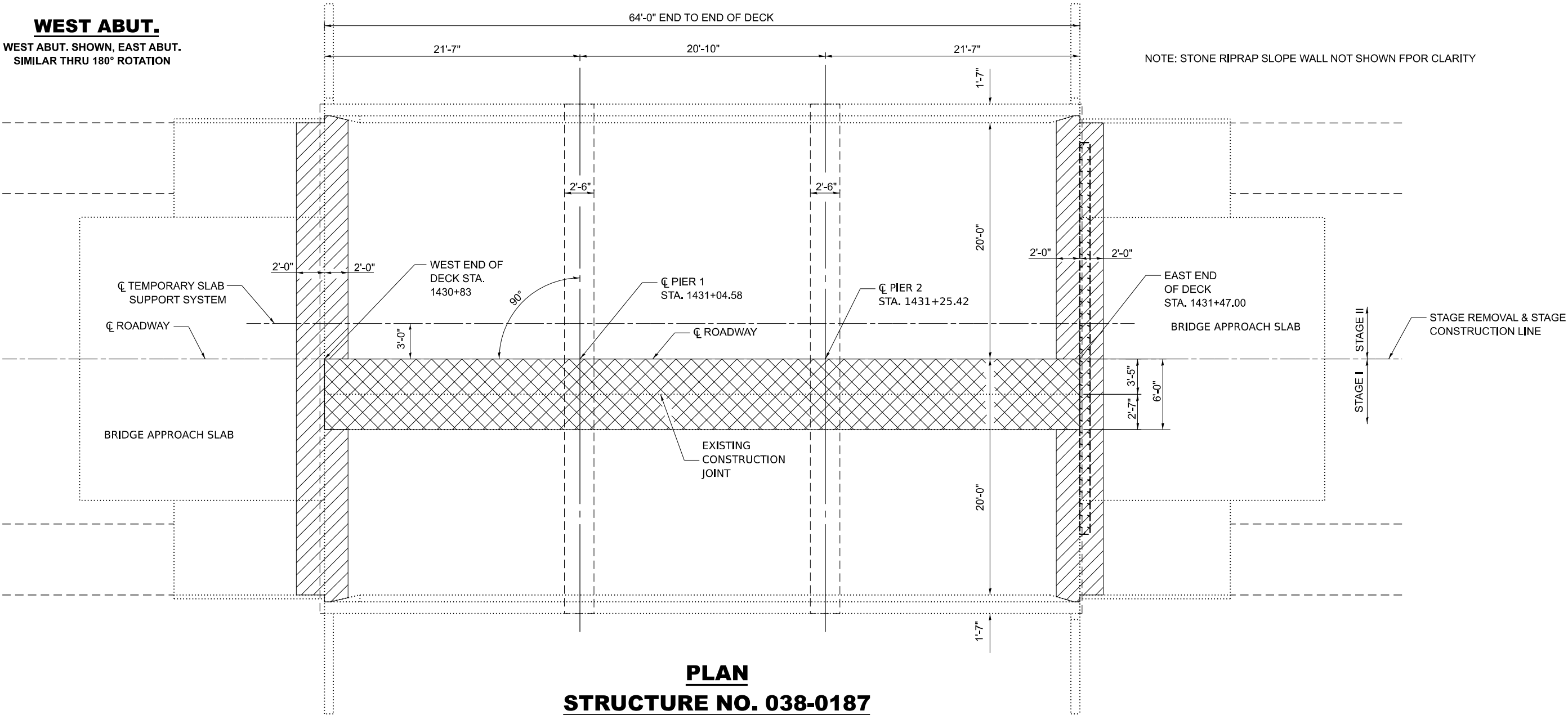
F.A.P. RTE.	SECTION	COUNTY	TOTAL SHEETS	SHEET NO.
317	(22BR-1)BRR	IROQUOIS	20	12
CONTRACT NO. 66P32				
ILLINOIS FED. AID PROJECT				



EXISTING **PROPOSED**

WEST ABUT.
WEST ABUT. SHOWN, EAST ABUT.
SIMILAR THRU 180° ROTATION

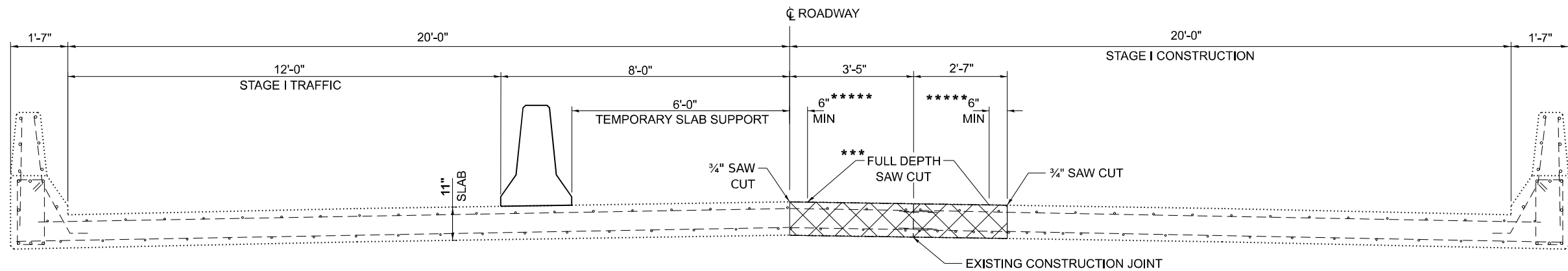
NOTE: STONE RIPRAP SLOPE WALL NOT SHOWN FFOR CLARITY



PLAN
STRUCTURE NO. 038-0187

MODEL: Default
FILE NAME: c:\pwworking\woodshank\038-0187.dgn

	USER NAME = ronald.woodshank	DESIGNED - RW	REVISED -	STATE OF ILLINOIS DEPARTMENT OF TRANSPORTATION	REMOVAL DETAILS FOR STRUCTURE NO. 038-0187				F.A.P. RTE.	SECTION	COUNTY	TOTAL SHEETS	SHEET NO.
		DRAWN - RW	REVISED -		317	(22BR-1)BRR	IROQUOIS	20	13				
		CHECKED - YP	REVISED -		CONTRACT NO. 66P32								
					ILLINOIS FED. AID PROJECT								
	PLOT DATE = 6/26/2024	DATE - 4/2/2024	REVISED -		SCALE:	SHEET 2 OF 6 SHEETS	STA.	TO STA.					



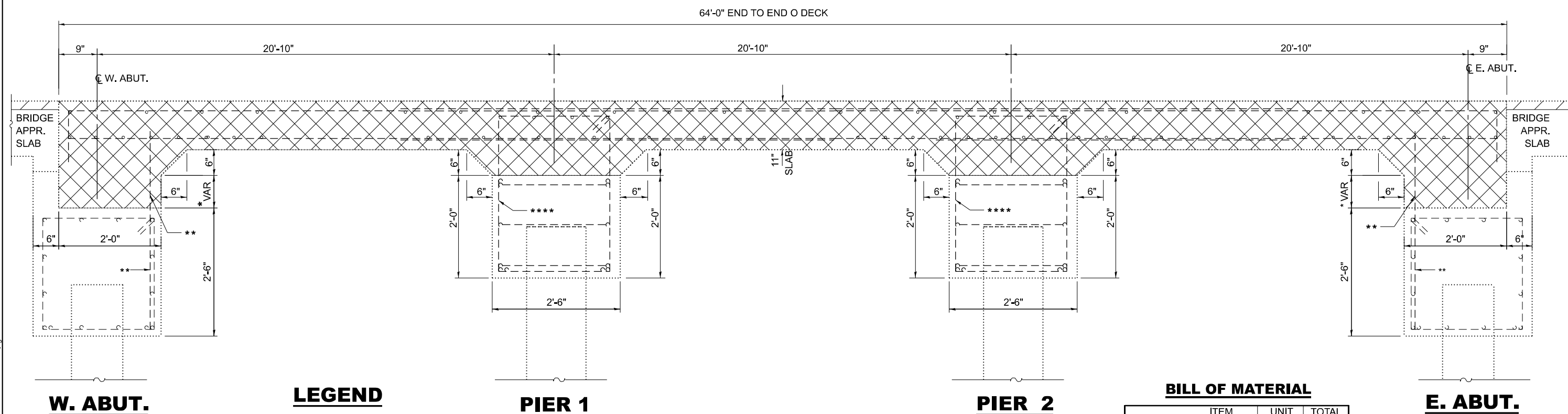
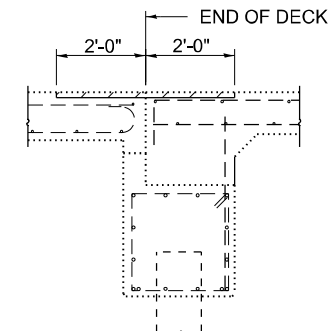
* VARIES 3" TO 7⁵/₈"

*** CUT EXISTING REINFORCEMENT BAR OFF FLUSH WITH TOP OF ABUTMENT SEAT. COST INCLUDED WITH CONCRETE REMOVAL.

*** A FULL DEPTH SAW CUT SHALL BE MADE A MINIMUM OF 6" FROM FACE OF CONCRETE REMOVAL LINE SEVERING THE EXISTING TRANSVERSE REINFORCEMENT BARS. EXISTING REINFORCEMENT BARS THAT ARE TO REMAIN, SHALL BE CLEANED AND STRAIGHTENED AND SHALL BE INCORPORATED INTO THE NEW CONSTRUCTION FOR THE INSTALLATION OF MECHANICAL SPLICERS. SEVERED TRANSVERSE REINFORCEMENT AND LONGITUDINAL REINFORCEMENT WITHIN REMOVAL AREA SHALL BE REMOVED AND DISPOSED OF AT AN APPROVED SITE.

*** EXISTING REINFORCEMENT SHALL BE SAVED, CLEANED AND INCORPORATED INTO THE NEW CONSTRUCTION.

*****EXISTING REINFORCEMENT BAR SHALL BE CUT OFF A MINIMUM OF 6" FROM FACE OF CONCRETE
REMOVAL LIMITS



BILL OF MATERIAL

ITEM	UNIT	TOTAL
TEMPORARY SLAB SUPPORT SYSTEM	L SUM	1
CONCRETE REMOVAL	CU YD	15.3

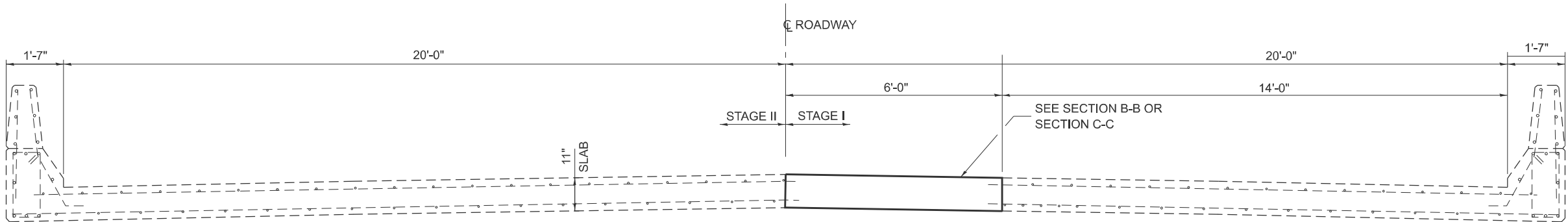
USER NAME = ronald.woodshank	DESIGNED - RW	REVISED -
	DRAWN - RW	REVISED -
	CHECKED - YP	REVISED -
PLOT DATE = 6/26/2024	DATE - 4/2/2024	REVISED -

STATE OF ILLINOIS
DEPARTMENT OF TRANSPORTATION

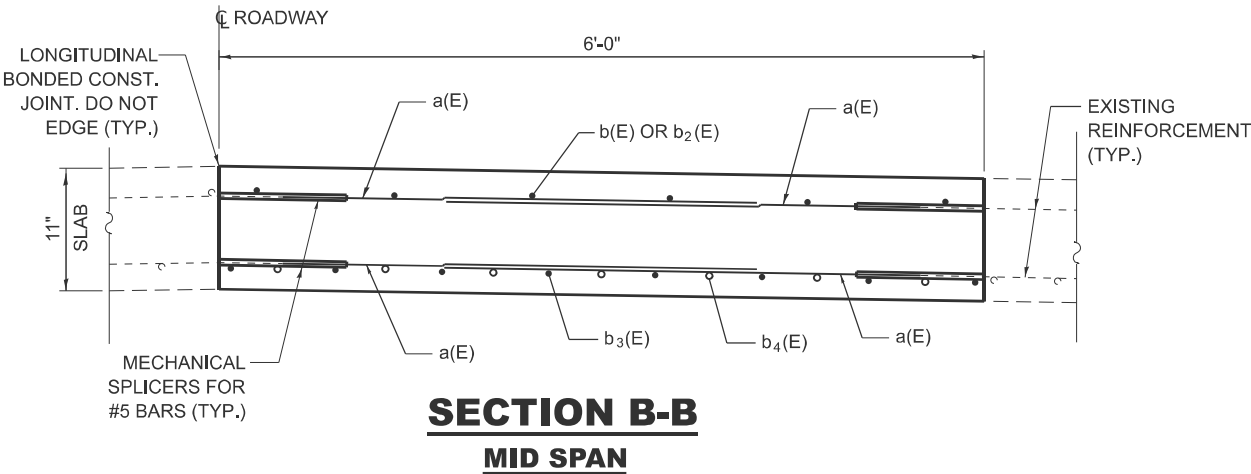
**REMOVAL DETAILS
FOR STRUCTURE NO. 038-0187**

F.A.P. RTE.	SECTION	COUNTY	TOTAL SHEETS	SHEET NO.
317	(22BR-1)BRR	IROQUOIS	20	14
		CONTRACT NO. 66P32		
		ILLINOIS	FED. AID PROJECT	

MODEL: Default
FILE NAME: c:\pw work\pwidot\woodshank\ld0979161\66P32.dgn

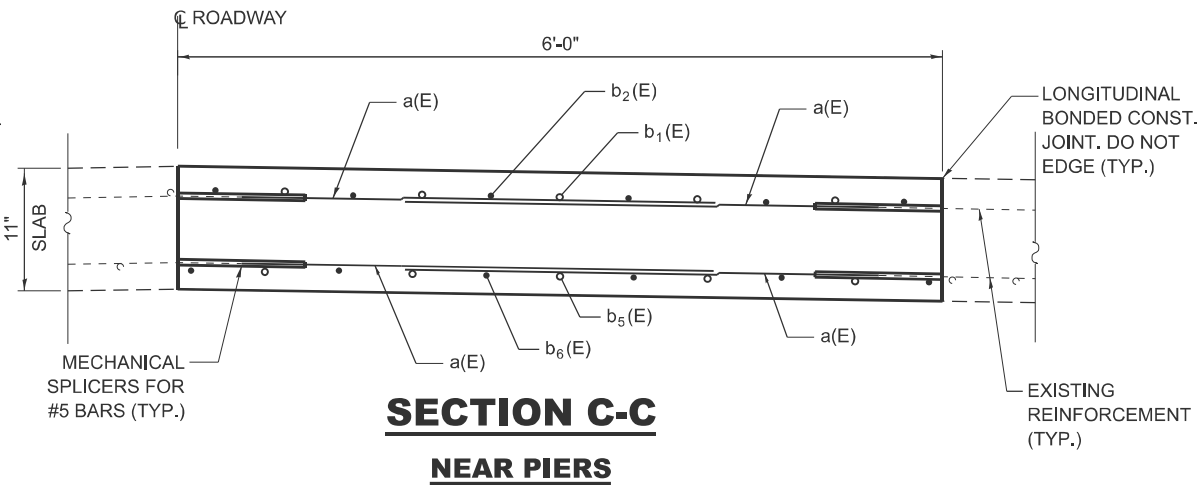


CROSS SECTION
LOOKING EAST

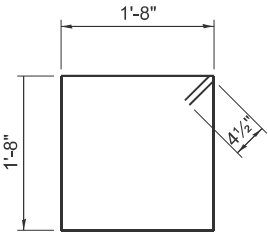


SECTION B-B
MID SPAN

LAP LENGTH
a(E) BAR 3'-7"



SECTION C-C
NEAR PIERS



s(E) BAR

SUPERSTRUCTURE
BILL OF MATERIAL

BAR	NO.	SIZE	LENGTH	SHAPE
a(E)	206	#5	4'-0"	—
b(E)	12	#5	13'-7"	—
b1(E)	10	#9	10'-6"	—
b2(E)	18	#7	16'-2"	—
b3(E)	16	#7	23'-0"	—
b4(E)	14	#7	17'-11"	—
b5(E)	6	#7	14'-4"	—
b6(E)	5	#7	23'-10"	—
p(E)	16	#6	4'-3"	—
s(E)	12	#4	7'-5"	□
v(E)	12	#5	2'-6"	—
CONCRETE SUPERSTRUCTURE			CU. YDS.	15.3
CONCRETE STRUCTURES (SPECIAL)			CU. YDS.	5
REINFORCEMENT BARS, EPOXY COATED			LBS.	3860
PROTECTIVE COAT			SQ YDS	76
DECK SLAB REPAIR (PARTIAL)			SQ YDS	33

BARS INDICATED THUS 1 X 2-#4 ETC. INDICATES 1 LINE OF BARS WITH 2 LENGTHS PER LINE.

(E) DESIGNATES EPOXY COATED REINFORCEMENT.

MODEL: Default
FILE NAME: c:\pwworking\woodshank\td0279161\66P32.dgn

USER NAME = ronald.woodshank	DESIGNED - RW	REVISED -
	DRAWN - RW	REVISED -
	CHECKED - YP	REVISED -
PLOT DATE = 6/26/2024	DATE - 4/2/2024	REVISED -

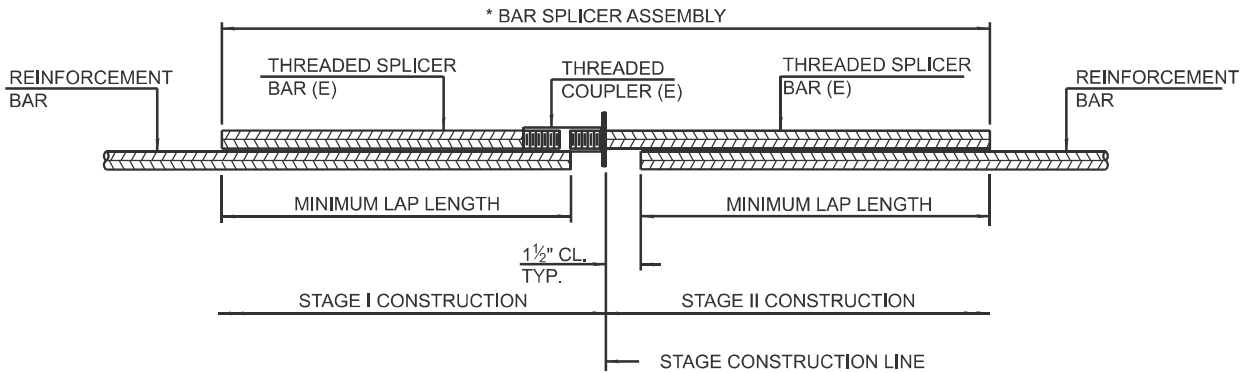
STATE OF ILLINOIS
DEPARTMENT OF TRANSPORTATION

RECONSTRUCTION DETAILS
FOR STRUCTURE NO. 038-0187

SCALE: SHEET 5 OF 6 SHEETS STA. TO STA.

F.A.P. RTE.	SECTION	COUNTY	TOTAL SHEETS	SHEET NO.
317	(22BR-1)BRR	IROQUOIS	20	16
CONTRACT NO. 66P32				
ILLINOIS FED. AID PROJECT				

MODEL: Default
FILE NAME: c:\pwwork\woodshank\td097916168P32.dgn



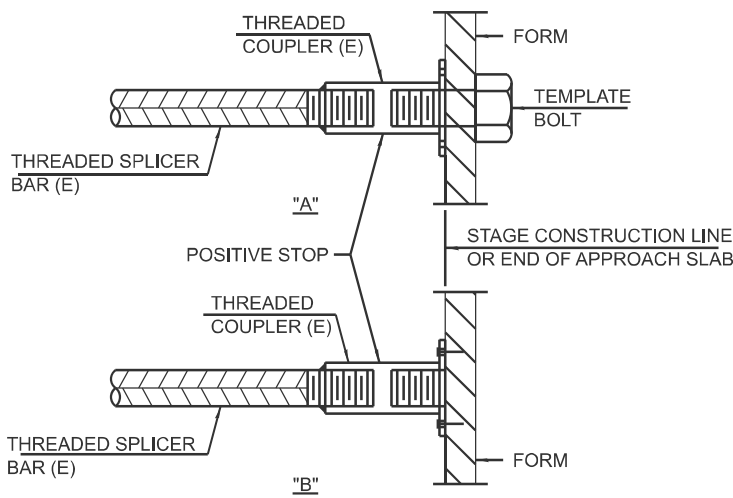
STANDARD BAR SPLICER ASSEMBLY PLAN

ONLY BAR SPLICER ASSEMBLIES AS PRESENTED ON THE APPROVED QPL LIST MAY BE USED.

THREADED SPLICER BAR LENGTH = MIN. LAP LENGTH + 1 1/2" + THREAD LENGTH

* EPOXY NOT REQUIRED ON BAR SPLICER ASSEMBLY COMPONENTS USED IN CONJUNCTION WITH BLACK BARS.

LOCATION	BAR SIZE	NO. ASSEMBLIES REQUIRED	MINIMUM LAP LENGTH

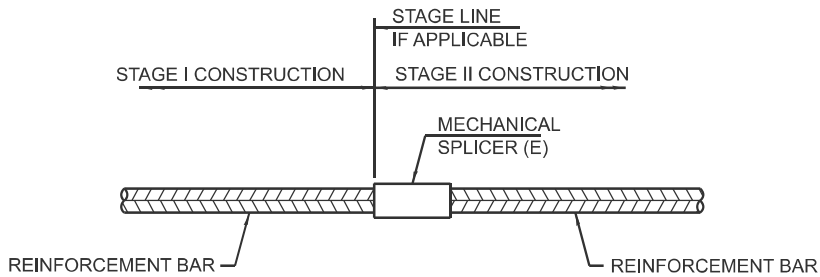


INSTALLATION AND SETTING METHODS

"A" : Set bar splicer assembly by means of a template bolt.

"B" : Set bar splicer assembly by nailing to wood forms or cementing to steel forms.

(E) : Indicates epoxy coating.



STANDARD MECHANICAL SPLICER

LOCATION	BAR SIZE	NO. ASSEMBLIES REQUIRED
DECK	#5	206
PIER 1	#6	8
PIER 2	#6	8

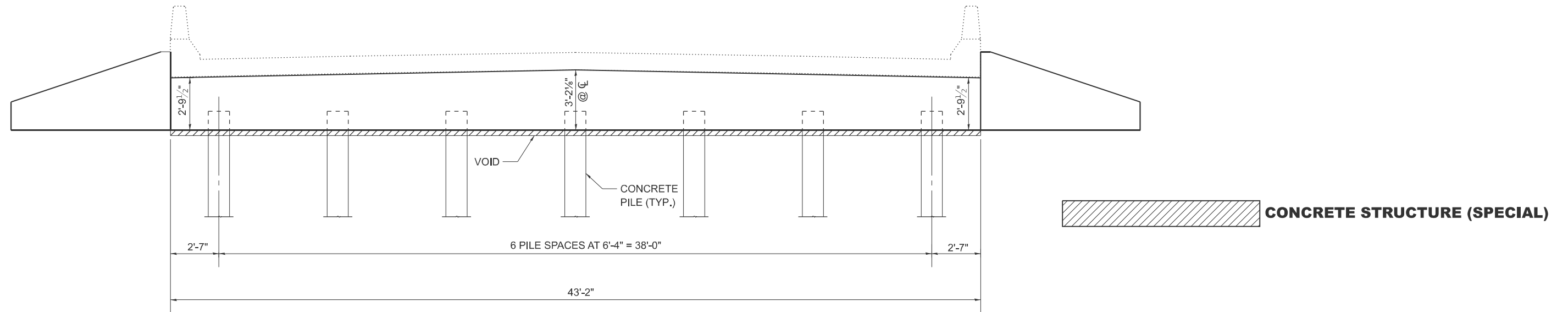
USER NAME = ronald.woodshank	DESIGNED - RW	REVISED -
	DRAWN - RW	REVISED -
	CHECKED - YP	REVISED -
PLOT DATE = 6/26/2024	DATE - 4/2/2024	REVISED -

STATE OF ILLINOIS
DEPARTMENT OF TRANSPORTATION

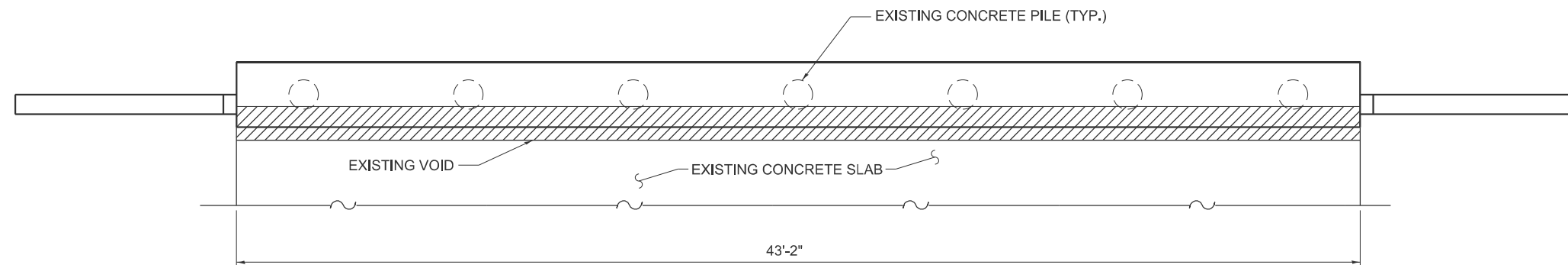
BAR SPLICER ASSEMBLY AND MECHANICAL SPLICER DETAILS
FOR STRUCTURE NO. 038-0187

SCALE: SHEET 6 OF 6 SHEETS STA. TO STA.

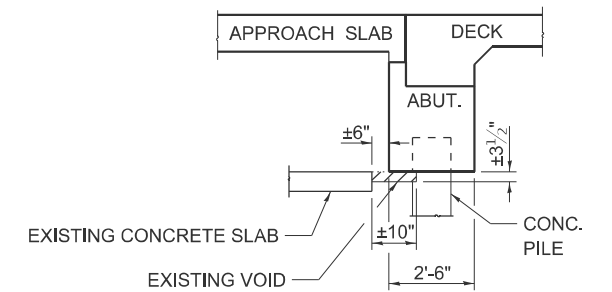
F.A.P. RTE.	SECTION	COUNTY	TOTAL SHEETS	SHEET NO.
317	(22BR-1)BRR	IROQUOIS	20	17
CONTRACT NO. 66P32				
		ILLINOIS	FED. AID PROJECT	



ELEVATION



PLAN
STRUCTURE NO. 038-0187



SECTION THROUGH ABUTMENT

MODEL: Default
FILE NAME: c:\pwworkspace\woodshank\038-0187.dgn

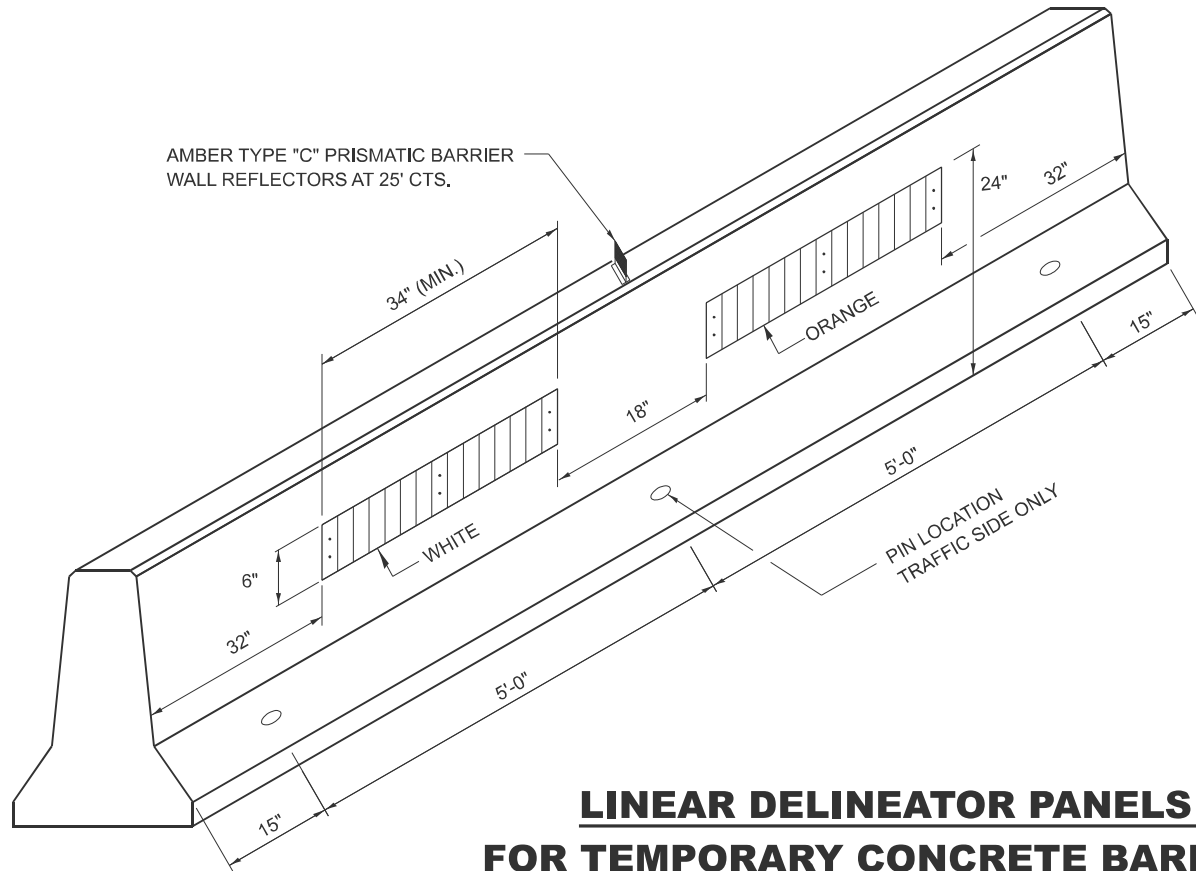
USER NAME = ronald.woodshank	DESIGNED - RW	REVISED -
	DRAWN - RW	REVISED -
	CHECKED - YP	REVISED -
PLOT DATE = 6/26/2024	DATE - 4/2/2024	REVISED -

STATE OF ILLINOIS
DEPARTMENT OF TRANSPORTATION

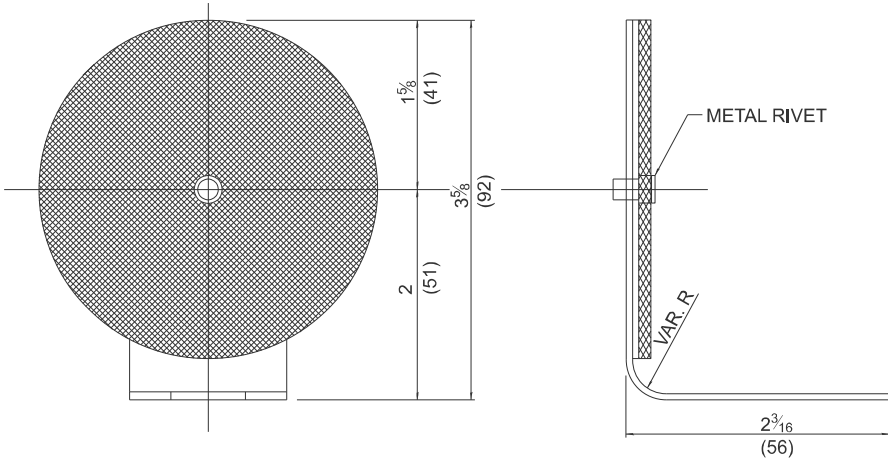
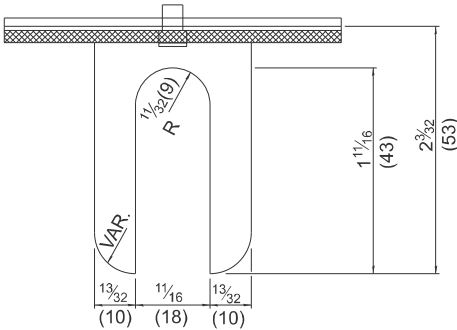
VOID REPAIRS AT EAST ABUTMENT
FOR STRUCTURE NO. 038-0187

SCALE: SHEET 1 OF 1 SHEETS STA. TO STA.

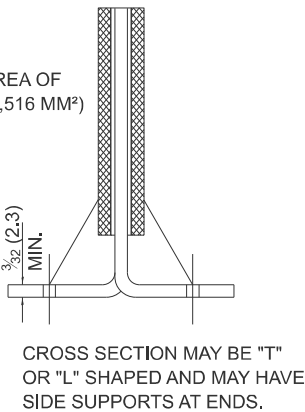
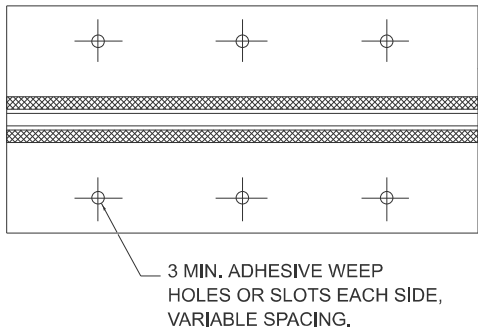
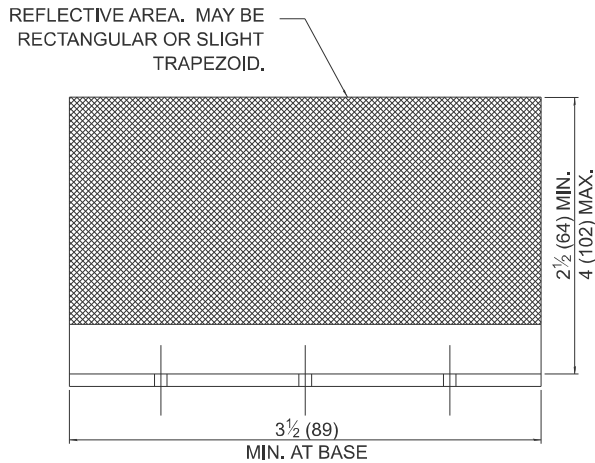
F.A.P. RTE. 317	SECTION (22BR-1)BRR	COUNTY IROQUOIS	TOTAL SHEETS 20	SHEET NO. 18
CONTRACT NO. 66P32				
ILLINOIS FED. AID PROJECT				



**LINEAR DELINEATOR PANELS
FOR TEMPORARY CONCRETE BARRIER**



REFLECTOR TYPE A
(MONODIRECTIONAL SHOWN)
STEEL PLATE BEAM GUARDRAIL

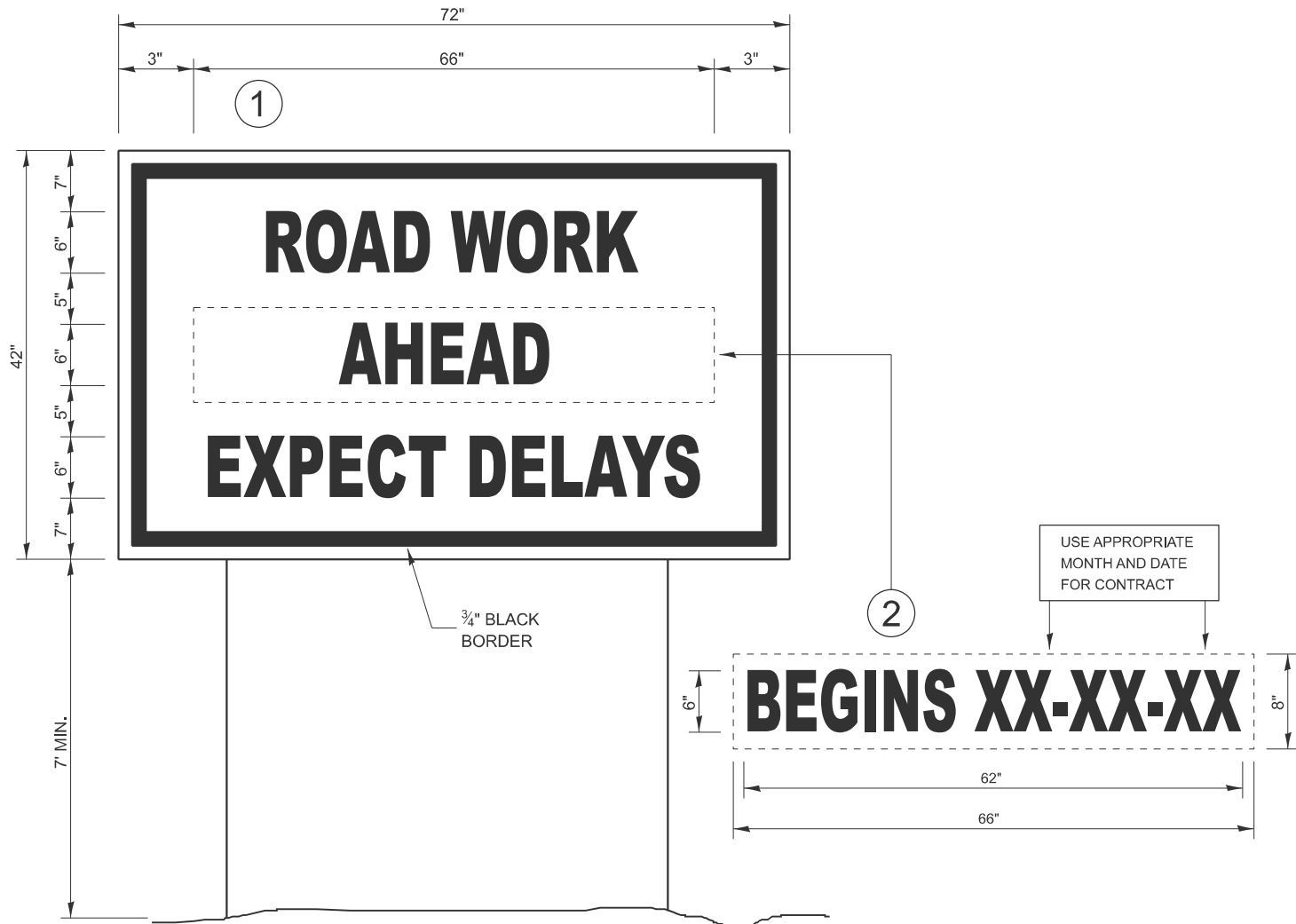


REFLECTOR TYPE C
TEMPORARY CONCRETE BARRAIER WALL

MODEL: Default
FILE NAME: c:\pwwork\woodshank\td0279161\66P32.dgn

	USER NAME = ronald.woodshank	DESIGNED - RW	REVISED -	STATE OF ILLINOIS DEPARTMENT OF TRANSPORTATION	GUARDRAIL / BARRIER WALL DELINEATION DETAILS			F.A.P. RTE.	SECTION	COUNTY	TOTAL SHEETS	SHEET NO.
		DRAWN - RW	REVISED -					317	(22BR-1)BRR	IROQUOIS	20	19
		CHECKED - YP	REVISED -		CONTRACT NO. 66P32							
	PLOT DATE = 6/26/2024	DATE - 4/2/2024	REVISED -		SCALE:	SHEET 1	OF 1 SHEETS	STA.	TO STA.	ILLINOIS FED. AID PROJECT		

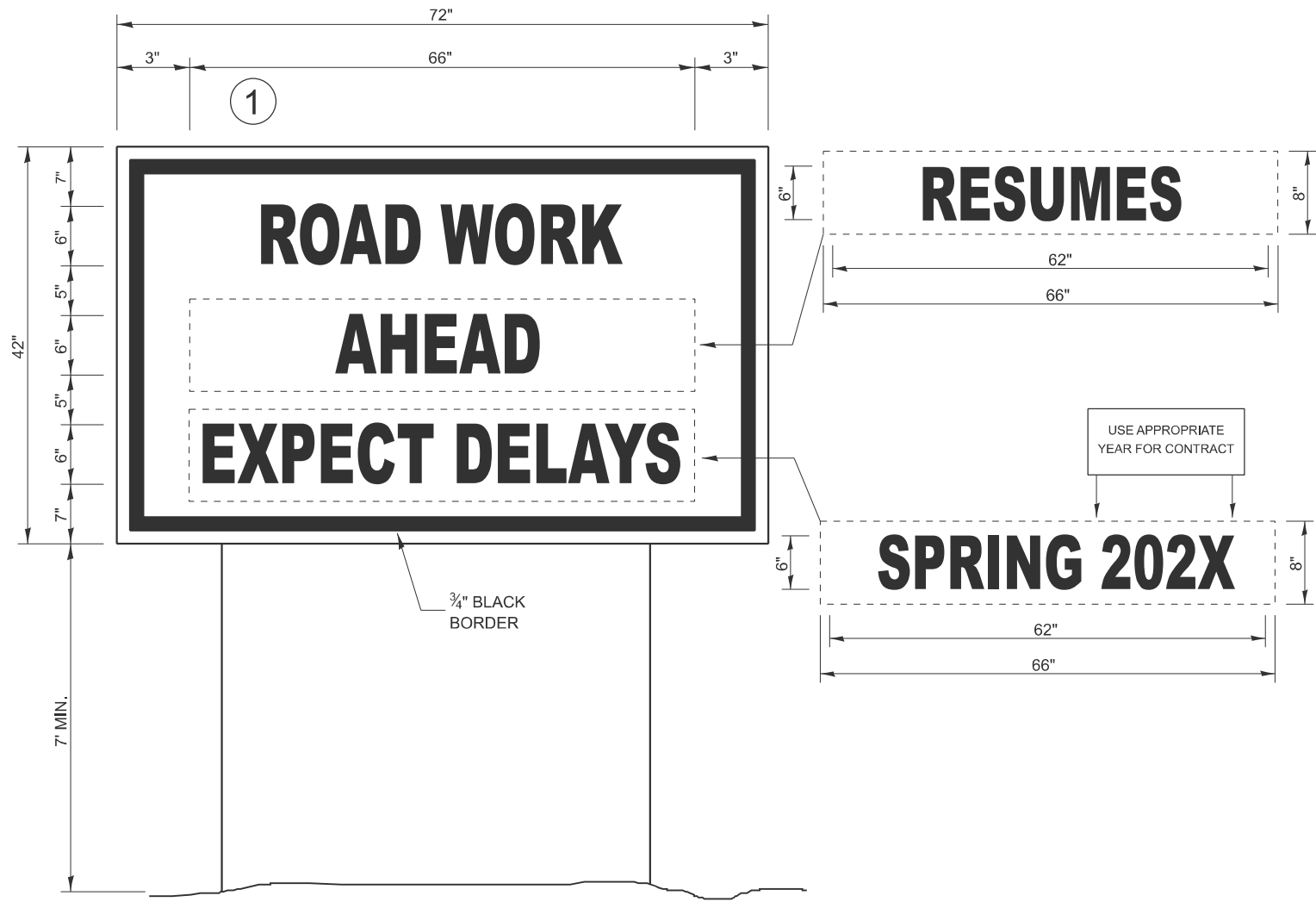
MODEL: Default
FILE NAME: c:\pwwork\woodshank\007916168P32.dgn



TEMPORARY INFORMATION SIGNING

NOTES:

1. USE 6" D BLACK LETTERING ON FLOURESENT ORANGE BACKGROUND.
2. ERECT SIGNS AT LOCATIONS IN ADVANCE OF THE "ROAD CONSTRUCTION AHEAD" SIGNS AS DIRECTED BY THE ENGINEER.
3. ERECT SIGN ① WITH INSTALLED PANEL ② A MINIMUM OF ONE WEEK PRIOR TO THE START OF THE LANE CLOSURE.
4. REMOVE PANEL ② ON THAT DATE.
5. SEE SPECIAL PROVISION "TEMPORARY INFORMATION SIGNING" FOR ADDITIONAL INFORMATION.
6. WILL BE PAID FOR PER SQ FT AS "TEMPORARY INFORMATION SIGNING". EACH SIGN = 21 SQ FT.



WINTER SHUT DOWN SIGNING

	USER NAME = ronald.woodshank	DESIGNED - RW	REVISED -	STATE OF ILLINOIS DEPARTMENT OF TRANSPORTATION	TEMPORARY INFORMATION SIGNING DETAILS			F.A.P. RTE.	SECTION	COUNTY	TOTAL SHEETS	SHEET NO.
		DRAWN - RW	REVISED -					317	(22BR-1)BRR	IROQUOIS	20	20
		CHECKED - YP	REVISED -					CONTRACT NO. 66P32				
	PLOT DATE = 6/26/2024	DATE - 4/2/2024	REVISED -		SCALE:	SHEET 1	OF 1	SHEETS	STA.	TO STA.	ILLINOIS FED. AID PROJECT	