

STATE OF ILLINOIS
DEPARTMENT OF TRANSPORTATION

F.A.S. RTE.	SECTION	COUNTY	TOTAL SHEETS	SHEET NO.
1807	D7 BRIDGE DECK REPAIRS	LAWRENCE	20	1
ILLINOIS			CONTRACT NO. 74912	

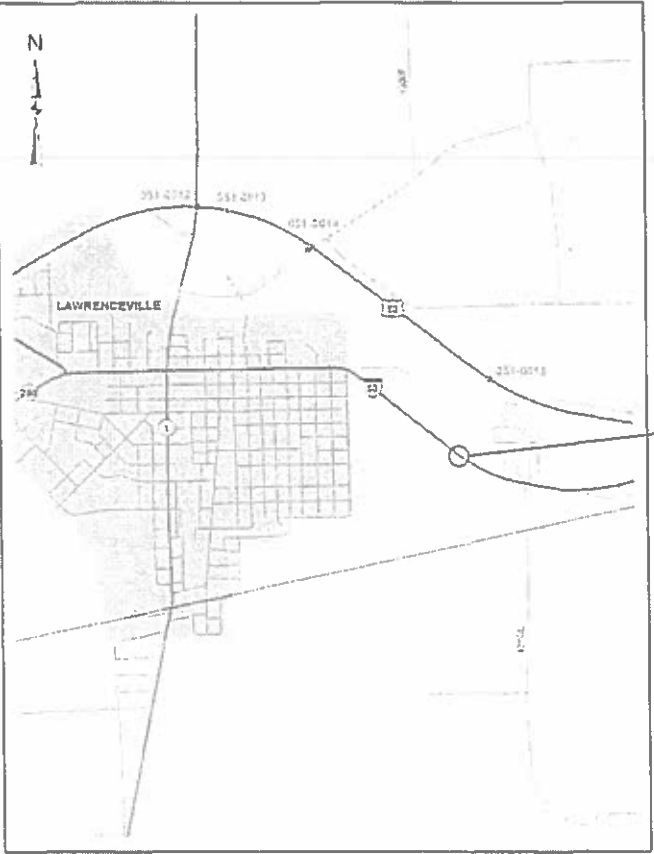
FOR INDEX OF SHEETS, SEE SHEET NO. 2

PROPOSED
HIGHWAY PLANS

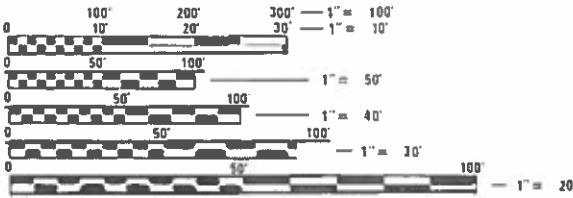
F.A.S. ROUTE 1807 (US BUSINESS 50)
SECTION: D7 BRIDGE DECK REPAIRS 2020-1
PROJECT: STP-HQA0(978)
BRIDGE REPAIR
LAWRENCE COUNTY

C-97-043-19

ADT = 5950 (2017)



PROJECT LOCATION: S.N. 051-0053
SECTION D7 BRIDGE DECK REPAIRS 2020-1



FULL SIZE PLANS HAVE BEEN PREPARED USING STANDARD
ENGINEERING SCALES. REDUCED SIZED PLANS WILL NOT
CONFORM TO STANDARD SCALES. IN MAKING MEASUREMENTS
ON REDUCED PLANS, THE ABOVE SCALES MAY BE USED.

J.U.L.I.E.
JOINT UTILITY LOCATION INFORMATION FOR EXCAVATION
1-800-892-0123
OR 811

PROJECT ENGINEER: DEBRA BARRETT
PROJECT MANAGER: MICHAEL BUZZARD

CONTRACT NO. 74912

GROSS LENGTH = 1236.48 FT. = 0.234 MILES
NET LENGTH = 1236.48 FT. = 0.234 MILES

STATE OF ILLINOIS
DEPARTMENT OF TRANSPORTATION

SUBMITTED August 28 2019

[Signature] REGIONAL ENGINEER

[Signature] ENGINEER OF DESIGN AND ENVIRONMENT

[Signature] DIRECTOR OF HIGHWAYS PROJECT IMPLEMENTATION

PRINTED BY THE AUTHORITY
OF THE STATE OF ILLINOIS

GENERAL NOTES

THE PROPOSED PROJECT IS LOCATED ON US BUSINESS ROUTE 50 IN LAWRENCE COUNTY OVER THE EMBARRAS RIVER, STRUCTURE NUMBER 051-0053.

THE WORK INCLUDED IN SECTION D7 BRIDGE DECK REPAIRS 2020-1 CONSISTS OF HMA SURFACE REMOVAL (DECK), BRIDGE DECK SCARIFICATION, FULL DEPTH DECK PATCHING, PLACING BRIDGE DECK FLY ASH OR GGBF SLAG CONCRETE OVERLAY AND REPLACING THE STRIP SEAL GLANDS OF THE STRIP SEAL JOINTS.

WHEN APPLYING SHORT TERM PAVEMENT MARKINGS, TEMPORARY TAPE SHALL BE USED ON THE SURFACE AND PAINT SHALL BE USED ON THE MILLED AND BINDER SURFACES.

THE CONTRACTOR SHALL PROVIDE INTERNET ACCESS TO THE BITUMINOUS PLANT QUALITY CONTROL LAB SO THAT BITUMINOUS PLANT REPORTS CAN BE MAILED TO THE DISTRICT HEADQUARTERS. THIS WORK WILL NOT BE PAID FOR SEPARATELY BUT SHALL BE INCLUDED IN THE UNIT PRICES FOR OTHER ITEMS IN THE CONTRACT.

LENGTHS OF GUARDRAIL TYPE A WERE CALCULATED ASSUMING A TYPE 1 TERMINAL LENGTH OF 50 FEET WITH 37.5 FEET CONTRIBUTING TO LENGTH OF NEED. IF THE CONTRACTOR ELECTS TO PROVIDE A TYPE 1 TERMINAL SHORTER THAN THIS THE CONTRACTOR SHALL PROVIDE AND ERECT AT NO COST TO THE DEPARTMENT TYPE A RAIL SUFFICIENT TO MAKE UP THE DIFFERENCE.

TEMPORARY PORTABLE TRAFFIC SIGNALS SHALL ONLY BE USED FROM MARCH 1 TO NOVEMBER 1.

THE FOLLOWING MIXTURE REQUIREMENTS ARE APPLICABLE TO THIS PROJECT:

APPLICATION	AC/PG	DESIGN AIR VOIDS	MIXTURE COMPOSITION	FRICTION AGGREGATE	QUALITY MANAGEMENT
HMA SHOULDERS, 10" (TOP 1 1/2" LIFT)	PG 64-22	4.0% @ N=90	IL - 9.5	MIXTURE D	QC/QA
HMA SHOULDERS, 10" (BOTTOM LIFTS)	PG 64-22	4.0% @ N=90	IL - 19.0	N/A	QC/QA

INDEX OF SHEETS

SHEET NO.	ITEM
1	COVER SHEET
2	INDEX OF SHEETS, HIGHWAY STANDARDS & GENERAL NOTES
3-4	SUMMARY OF QUANTITIES
5	TYPICAL CROSS SECTIONS
6-7	SCHEDULES OF QUANTITIES
8-9	TRAFFIC CONTROL SHEETS
10-16	BRIDGE PLAN SHEETS
17-20	DISTRICT 7 PAVEMENT MARKING DETAILS

THE FOLLOWING STANDARDS ARE A PART OF THESE PLANS AND ARE INCLUDED FOLLOWING THE LAST NUMBERED SHEET OF THE PLANS.

STD. NO. DESCRIPTION

000001-07	STANDARD SYMBOLS, ABBREVIATIONS, AND PATTERNS
001006	DECIMAL OF AN INCH AND OF A FOOT
482001-02	HMA SHOULDER ADJACENT TO FLEXIBLE PAVEMENT
630001-12	STEEL PLATE BEAM GUARDRAIL
630201-07	PCC / HMA STABILIZATION AT STEEL PLATE BEAM GUARDRAIL
630301-09	SHOULDER WIDENING FOR TYPE 1 (SPECIAL) GUARDRAIL TERMINALS
643001-02	SAND MODULE IMPACT ATTENUATORS
701001-02	OFF-ROAD OPERATIONS, 2L, 2W, MORE THAN 15' AWAY
701006-05	OFF-ROAD OPERATIONS, 2L, 2W, 15' TO 24" FROM PAVEMENT EDGE
701201-05	LANE CLOSURE, 2L, 2W, DAY ONLY, FOR SPEEDS >= 45 MPH
701301-04	LANE CLOSURE, 2L, 2W, SHORT TIME OPERATIONS
701311-03	LANE CLOSURE, 2L, 2W, MOVING OPERATIONS - DAY ONLY
701321-17	LANE CLOSURE, 2L, 2W, BRIDGE REPAIR WITH BARRIER
701326-04	LANE CLOSURE, 2L, 2W, PAVEMENT WIDENING, FOR SPEEDS >= 45 MPH
701901-08	TRAFFIC CONTROL DEVICES
704001-08	TEMPORARY CONCRETE BARRIER
725001-01	OBJECT AND TERMINAL MARKERS
780001-05	TYPICAL PAVEMENT MARKINGS
782006	GUARDRAIL AND BARRIER WALL REFLECTOR MOUNTING DETAILS

MODEL: Default
FILE: \\ntwrp-prod\pub\anr\m.d\all\links\gov\RWIDOT\Documents\DOT_Offices\District_7\Projects\74912\CADD\ba\CAD\sheets\D774912-sht-gen-note.dgn

** D7 BRIDGE DECK REPAIRS 2020-1

	USER NAME = steffenmk	DESIGNED -	REVISED -	STATE OF ILLINOIS DEPARTMENT OF TRANSPORTATION	INDEX OF SHEETS, GENERAL NOTES, AND SUMMARY OF QUANTITIES				F.A.S. RTE.	SECTION	COUNTY	TOTAL SHEETS	SHEET NO.
		DRAWN -	REVISED -						1807	**	LAWRENCE	20	2
	PLOT SCALE = 100,0000 ' / in.	CHECKED -	REVISED -		CONTRACT NO. 74912								
	PLOT DATE = 8/29/2019	DATE -	REVISED -		SCALE:	SHEET	OF	SHEETS	STA.	TO	STA.		
											ILLINOIS	FED. AID PROJECT	

			80% FED 20% STATE URBAN						80% FED 20% STATE URBAN												
SUMMARY OF QUANTITIES			TOTAL QUANTITIES	CONSTRUCTION TYPE CODE			SUMMARY OF QUANTITIES			TOTAL QUANTITIES	CONSTRUCTION TYPE CODE										
CODE NO	ITEM	UNIT		0059			CODE NO	ITEM	UNIT												
40600275	BITUMINOUS MATERIALS (PRIME COAT)	POUND	491	491			70100500	TRAFFIC CONTROL AND PROTECTION, STANDARD	L SUM	1	1										
								701326													
40600290	BITUMINOUS MATERIALS (TACK COAT)	POUND	98	98																	
							70106500	TEMPORARY BRIDGE TRAFFIC SIGNALS	EACH	1	1										
48101200	AGGREGATE SHOULDERS, TYPE B	TON	164	164																	
							70107005	PAVEMENT MARKING BLACKOUT TAPE, 5"	FOOT	3276	3276										
48203037	HOT-MIX ASPHALT SHOULDERS, 10"	SQ YD	436	436																	
							70107025	CHANGEABLE MESSAGE SIGN	CAL DA	28	28										
50300260	BRIDGE DECK GROOVING	SQ YD	5005	5005																	
							70300100	SHORT TERM PAVEMENT MARKING	FOOT	223	223										
50300300	PROTECTIVE COAT	SQ YD	5279	5279																	
							70300150	SHORT TERM PAVEMENT MARKING REMOVAL	SQ FT	2326	2326										
* 63000001	STEEL PLATE BEAM GUARDRAIL, TYPE A, 6 FOOT	FOOT	50	50																	
	POSTS						70400100	TEMPORARY CONCRETE BARRIER	FOOT	1456	1456										
* 63100085	TRAFFIC BARRIER TERMINAL, TYPE 6	EACH	4	4			70400200	RELOCATE TEMPORARY CONCRETE BARRIER	FOOT	1457	1457										
* 63100167	TRAFFIC BARRIER TERMINAL, TYPE 1 (SPECIAL)	EACH	4	4			70600250	IMPACT ATTENUATORS, TEMPORARY (NON-	EACH	2	2										
	TANGENT							REDIRECTIVE), TEST LEVEL 3													
63200310	GUARDRAIL REMOVAL	FOOT	400	400			70600350	IMPACT ATTENUATORS, RELOCATE (NON-	EACH	2	2										
								REDIRECTIVE), TEST LEVEL 3													
67100100	MOBILIZATION	L SUM	1	1																	
							* 72501000	TERMINAL MARKER - DIRECT APPLIED	EACH	4	4										
70100450	TRAFFIC CONTROL AND PROTECTION, STANDARD	L SUM	1	1																	
	701201						* 78004110	PREFORMED PLASTIC PAVEMENT MARKING, TYPE C -	FOOT	2782	2782										
								LINE 4"													
* SPECIALTY ITEM																					
** D7 BRIDGE DECK REPAIRS 2020-1																					
MODEL: Default FILE NAME: pw:\planroom\dad\illinois.gov\PMWIDOT\Documents\IDOT Offices\District 7\Projects\74912\CADData\CADsheets\ID74912-sh-500.dgn		USER NAME = steffenmk		DESIGNED -		REVISED -		STATE OF ILLINOIS DEPARTMENT OF TRANSPORTATION				SUMMARY OF QUANTITIES				F.A.S RTE.	SECTION		COUNTY	TOTAL SHEETS	SHEET NO.
		PLOT SCALE = 100,0000 ' / in.		DRAWN -		REVISED -						1807	***		LAWRENCE		20	3			
		PLOT DATE = 8/29/2019		DATE -		REVISED -										CONTRACT NO. 74912					
												SCALE: SHEET OF SHEETS STA. TO STA.				ILLINOIS FED. AID PROJECT					

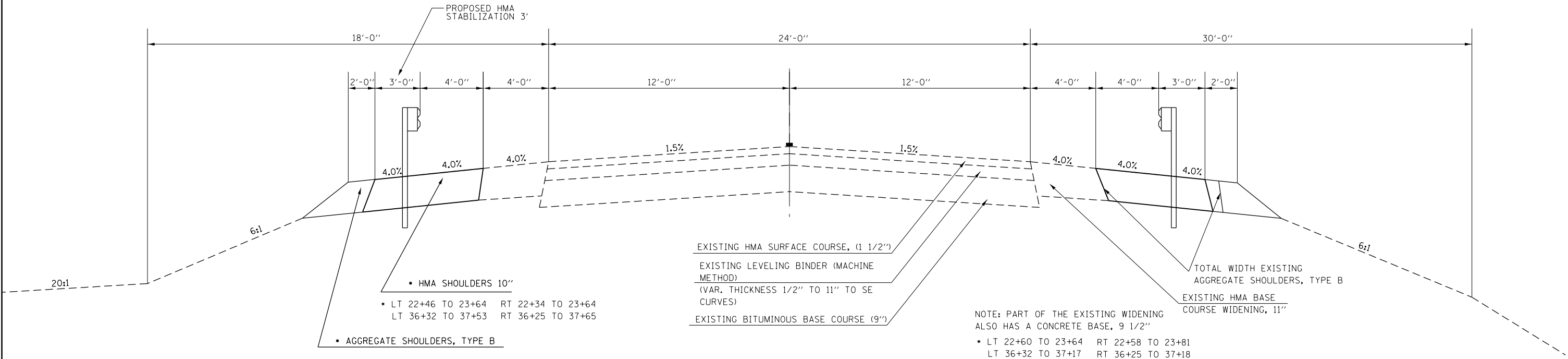
MODEL: Default
FILE NAME: pwr:\planroom\dot\IllInols.gov\PWIDOT\Documents\DOT Offices\District 7\Projects\74912\CADData\CADsheets\ID774912-sht-50Q.dgn

* SPECIALTY ITEM

FILE NAME: D:\PROJECTS\2019\20190829\20190829.DWG	USER NAME = steffenmk	DESIGNED -	REVISED -	STATE OF ILLINOIS DEPARTMENT OF TRANSPORTATION	SUMMARY OF QUANTITIES				F.A.S RTE.	SECTION	COUNTY	TOTAL SHEETS	SHEET NO.	
		DRAWN -	REVISED -						1807	**	LAWRENCE	20	4	
	PLOT SCALE = 100,0000 ' / in.	CHECKED -	REVISED -						CONTRACT NO. 74912					
	PLOT DATE = 8/29/2019	DATE -	REVISED -		SCALE:	SHEET	OF	SHEETS	STA.	TO STA.				
											ILLINOIS	FED. AID	PROJECT	

TYPICAL CROSS SECTION FAS 1807

STATION	TO	STATION
20+74.00		23+81.60
36+18.08		39+19.00



** D7 BRIDGE DECK REPAIRS 2020-1

	USER NAME = steffenmk	DESIGNED -	REVISED -	STATE OF ILLINOIS DEPARTMENT OF TRANSPORTATION	TYPICAL CROSS SECTION					F.A.S RTE.	SECTION	COUNTY	TOTAL SHEETS	SHEET NO.
		DRAWN -	REVISED -							1807	**	LAWRENCE	20	5
	PLOT SCALE = 100.0000 ' / in.	CHECKED -	REVISED -							CONTRACT NO. 74912				
	PLOT DATE = 8/29/2019	DATE -	REVISED -		SCALE:	SHEET	OF	SHEETS	STA.	TO	STA.		ILLINOIS	FED. AID PROJECT

AGGREGATE SHOULDERS							
	STATION	TO	STATION	LENGTH (FT)	SHLDR SQFT	CU YD	TON
LT	22+16.00		23+70.00	154.00	3.74	21.3	43.7
LT	36+28.00		37+53.00	125.00	3.74	17.3	35.5
RT	22+18.00		23+70.00	152.00	3.74	21.1	43.2
RT	36+25.00		37+70.00	145.00	3.74	20.1	41.2
TOTAL:							164

PAVEMENT MARKING BLACKOUT TAPE, 5"				
	STATION	TO	STATION	LENGTH (FT)
STAGE 1				
CENTERLINE	20+74.00		22+37.00	40.75
CENTERLINE	37+00.00		39+15.00	53.75
RT	22+18.00		37+70.00	1552.00
STAGE 2				
CENTERLINE	20+94.00		23+03.00	52.25
CENTERLINE	37+52.00		39+13.00	40.25
LT	22+16.00		37+53.00	1537.00
TOTAL =				3276

SHORT TERM PAVEMENT MARKING REMOVAL						
	STATION	TO	STATION	LENGTH (FT)	WIDTH (FT)	SQ FT
CENTERLINE	23+81.60		36+18.08	123.65	0.33	41.2
LT	23+81.60		36+18.08	49.46	0.33	16.5
RT	23+81.60		36+18.08	49.46	0.33	16.5
REMOVAL FOR STANDARD 701321						
	STATION	TO	STATION	LENGTH (FT)	WIDTH (FT)	SQ FT
STAGE 1						
LT	23+34.00		37+46.00	353.00	0.33	117.67
LT	38+04.00		39+09.00	26.25	0.33	8.75
RT	22+34.00		37+65.00	1531.00	0.33	510.33
STAGE 2						
LT	22+46.00		37+53.00	376.75	0.33	125.58
RT	21+02.00		38+53.00	437.75	0.33	145.92
REMOVAL FOR BLACKOUT TAPE 5"						
	STATION	TO	STATION	LENGTH (FT)	WIDTH (FT)	SQ FT
STAGE 1						
CENTERLINE	20+74.00		22+37.00	40.75	0.42	16.98
CENTERLINE	37+00.00		39+13.00	53.25	0.42	22.19
RT	22+34.00		37+65.00	1531.00	0.42	637.92
STAGE 2						
CENTERLINE	20+92.00		23+03.00	52.75	0.42	21.98
CENTERLINE	37+52.00		39+13.00	40.25	0.42	16.77
LT	22+46.00		37+53.00	1507.00	0.42	627.92
TOTAL =						2326

HMA SHOULDERS 10"						
	STATION	TO	STATION	LENGTH (FT)	WIDTH (FT)	SQ YD
LT	22+16.00		23+64.00	148.00	7	115.1
LT	36+32.00		37+53.00	121.00	7	94.1
RT	22+18.00		23+64.00	146.00	7	113.6
RT	36+25.00		37+70.00	145.00	7	112.8
TOTAL =						436

SHORT TERM PAVEMENT MARKING				
	STATION	TO	STATION	LENGTH (FT)
CENTERLINE	23+81.60		36+18.08	123.65
LT	23+81.60		36+18.08	49.46
RT	23+81.60		36+18.08	49.46
TOTAL =				223

TEMPORARY CONCRETE BARRIER				
	STATION	TO	STATION	LENGTH (FT)
STAGE 1				
	22+59.00		37+15.00	1456.00
TOTAL =				1456

RELOCATE TEMPORARY CONCRETE BARRIER				
	STATION	TO	STATION	LENGTH (FT)
STAGE 2				
	22+71.00		37+28.00	1457.00
TOTAL =				1457

PERFORMED PLASTIC PAVEMENT MARKING, TYPE C - LINE 4"				
	STATION	TO	STATION	LENGTH (FT)
CENTERLINE	23+81.60		36+18.08	309.12
LT	23+81.60		36+18.08	1236.48
RT	23+81.60		36+18.08	1236.48
TOTAL =				2782

LINEAR DELINEATOR PANELS					
	STATION	TO	STATION	LENGTH (FT)	EACH
	23+81.00		36+18.00	1237.00	49.48
				TOTAL =	49

MODEL Default
FILE Name: pavementmkn.dwg
Path: \\pavementmkn.dwg
Plot: 100.0000 ' / in.
Date: 8/29/2019

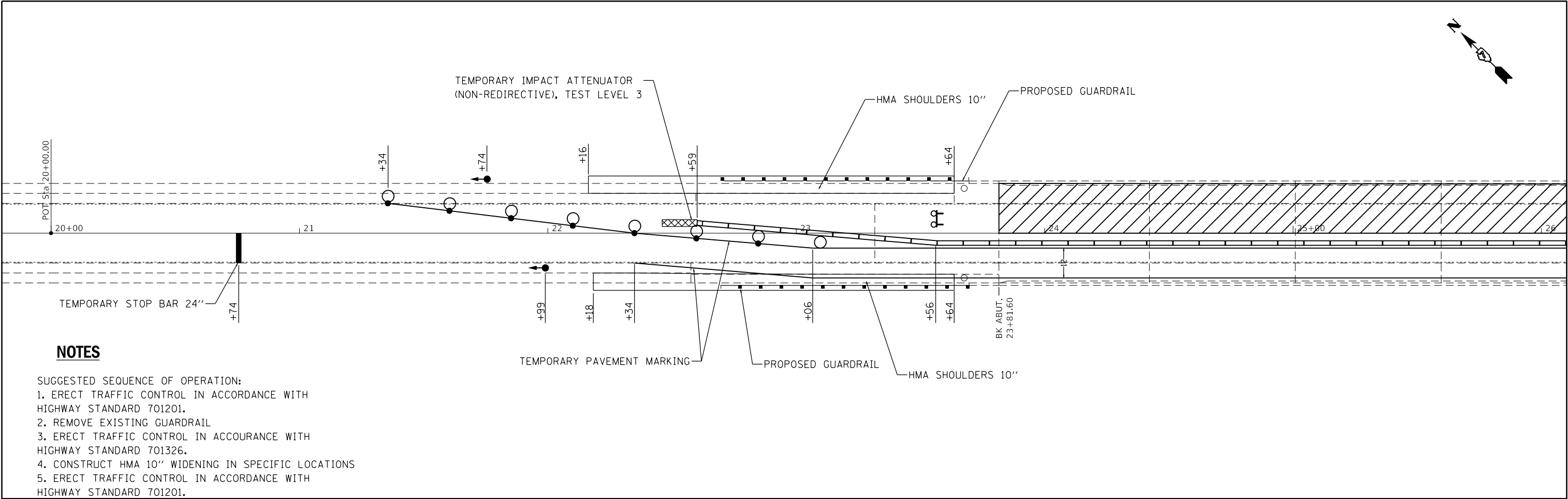
	USER NAME = steffennk	DESIGNED -	REVISED -	STATE OF ILLINOIS DEPARTMENT OF TRANSPORTATION	SCHEDULE OF QUANTITIES				F.A.S. RTE.	SECTION	COUNTY	TOTAL SHEETS	SHEET NO.
		DRAWN -	REVISED -						1807	**	LAWRENCE	20	6
	PLOT SCALE = 100,0000 ' / in.	CHECKED -	REVISED -				CONTRACT NO. 74912						
	PLOT DATE = 8/29/2019	DATE -	REVISED -										
						SCALE:	SHEET	OF	SHEETS	STA.	TO STA.	ILLINOIS FED. AID PROJECT	

MODEL Default
FILE Name: p:\publanroom.datalinks\gov\PW\DOT\Documents\DOT_Offices\District 7\Projects\74912\CAOData\CADsheets\0774912-shs-schedule.dgn

GUARDRAIL									
Route	Terminal Location	Latitude	Longitude	Guardrail Removal (Foot)	Traffic Barrier Terminal Type 1 (Special) Tangent (Each)	Steel Plate Beam Guardrail, Type A 6 Foot Posts (Foot)	Traffic Barrier Terminal Type 6 (Each)	Terminal Marker - Direct Applied (Each)	Guardrail Reflectors, Type A (Each)
BUS 50	SW Quad	38.72603247	-87.66815105	100.0	1	37.5	1	1	4
BUS 50	NW Quad	38.72612526	-87.66805387	100.0	1		1	1	4
BUS 50	SE Quad	38.72353700	-87.66414949	100.0	1		1	1	4
BUS 50	NE Quad	38.72363212	-87.66405084	100.0	1	12.5	1	1	4
			TOTALS:	400	4	50	4	4	16

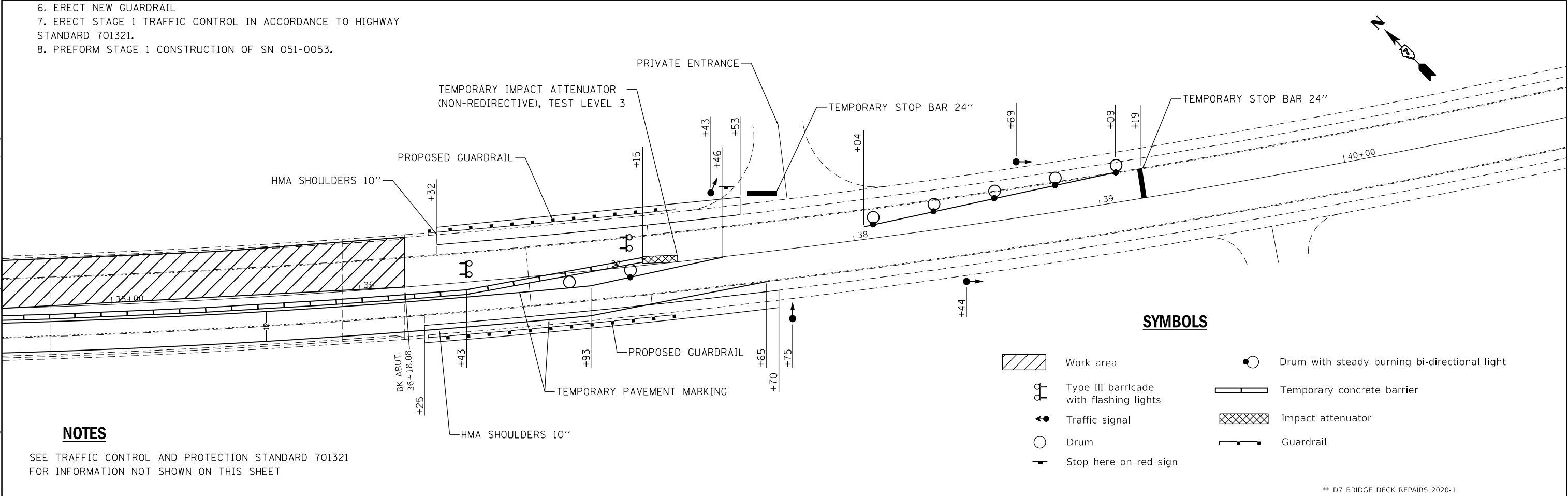
	USER NAME = steffenmk	DESIGNED -	REVISED -	STATE OF ILLINOIS DEPARTMENT OF TRANSPORTATION	SCHEDULE OF QUANTITIES				F.A.S. RTE.	SECTION	COUNTY	TOTAL SHEETS	SHEET NO.		
		DRAWN -	REVISED -						1807	**	LAWRENCE	20	7		
	PLOT SCALE = 100,0000 ' / in.	CHECKED -	REVISED -						CONTRACT NO. 74912						
	PLOT DATE = 8/29/2019	DATE -	REVISED -		SCALE:	SHEET	OF	SHEETS	STA.	TO STA.					
									ILLINOIS		FED. AID PROJECT				
										LAWRENCE			CONTRACT NO. 74912		
										TOTAL SHEETS			SHEET NO.		
										20			7		

MODEL Default
FILE Name: p:\pub\hannan\dot\all\links\soi\p\WID\DOT\Documents\DOT Office\District 7\Projects\74912\CADD\Sheet\74912-shcdan.dgn



NOTES

- SUGGESTED SEQUENCE OF OPERATION:
1. ERECT TRAFFIC CONTROL IN ACCORDANCE WITH HIGHWAY STANDARD 701201.
 2. REMOVE EXISTING GUARDRAIL
 3. ERECT TRAFFIC CONTROL IN ACCOURANCE WITH HIGHWAY STANDARD 701326.
 4. CONSTRUCT HMA 10" WIDENING IN SPECIFIC LOCATIONS
 5. ERECT TRAFFIC CONTROL IN ACCORDANCE WITH HIGHWAY STANDARD 701201.
 6. ERECT NEW GUARDRAIL
 7. ERECT STAGE 1 TRAFFIC CONTROL IN ACCORDANCE TO HIGHWAY STANDARD 701321.
 8. PREFORM STAGE 1 CONSTRUCTION OF SN 051-0053.



NOTES

SEE TRAFFIC CONTROL AND PROTECTION STANDARD 701321 FOR INFORMATION NOT SHOWN ON THIS SHEET

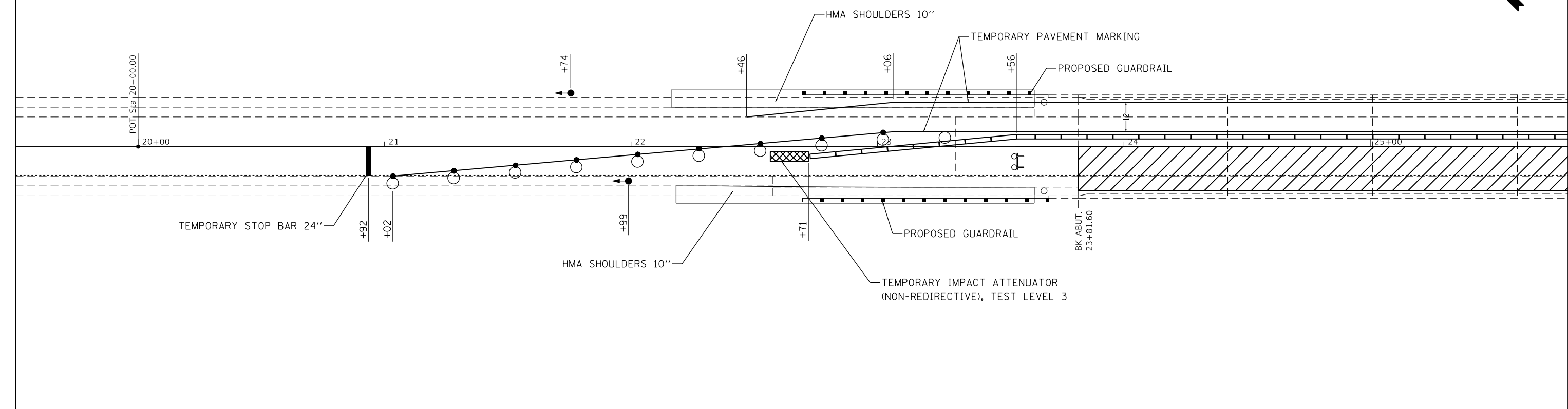
SYMBOLS

- | | |
|---|---|
| Work area | Drum with steady burning bi-directional light |
| Type III barricade with flashing lights | Temporary concrete barrier |
| Traffic signal | Impact attenuator |
| Drum | Guardrail |
| Stop here on red sign | |

** D7 BRIDGE DECK REPAIRS 2020-1

	USER NAME = steffenmk	DESIGNED -	REVISED -	STATE OF ILLINOIS DEPARTMENT OF TRANSPORTATION	TRAFFIC CONTROL STAGE 1				F.A.S RTE.	SECTION	COUNTY	TOTAL SHEETS	SHEET NO.	
		DRAWN -	REVISED -						1807	**	LAWRENCE	20	8	
	PLOT SCALE = 40,0000 ' / in.	CHECKED -	REVISED -		CONTRACT NO. 74912									
	PLOT DATE = 8/29/2019	DATE -	REVISED -		SCALE:	SHEET	OF	SHEETS	STA.	TO STA.				
											ILLINOIS	FED. AID PROJECT		

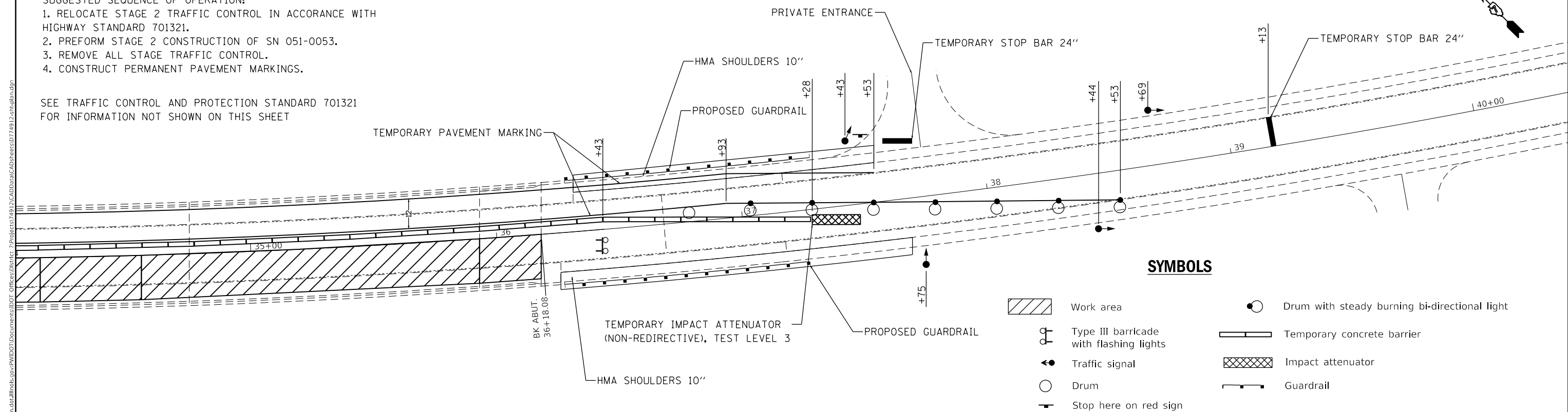
MODEL: Default
FILE: \\ntwrk01.pw.state.il.us\pub\lanonm\dotall\links\gov\8\WIDOT\Documents\DOT Office\District 7\projects\74912\CADD\baCAD\sheet\0774912-shcdan.dgn



NOTES

- SUGGESTED SEQUENCE OF OPERATION:
1. RELOCATE STAGE 2 TRAFFIC CONTROL IN ACCORDANCE WITH HIGHWAY STANDARD 701321.
 2. PREFORM STAGE 2 CONSTRUCTION OF SN 051-0053.
 3. REMOVE ALL STAGE TRAFFIC CONTROL.
 4. CONSTRUCT PERMANENT PAVEMENT MARKINGS.

SEE TRAFFIC CONTROL AND PROTECTION STANDARD 701321
FOR INFORMATION NOT SHOWN ON THIS SHEET



SYMBOLS

	Work area		Drum with steady burning bi-directional light
	Type III barricade with flashing lights		Temporary concrete barrier
	Traffic signal		Impact attenuator
	Drum		Guardrail
	Stop here on red sign		

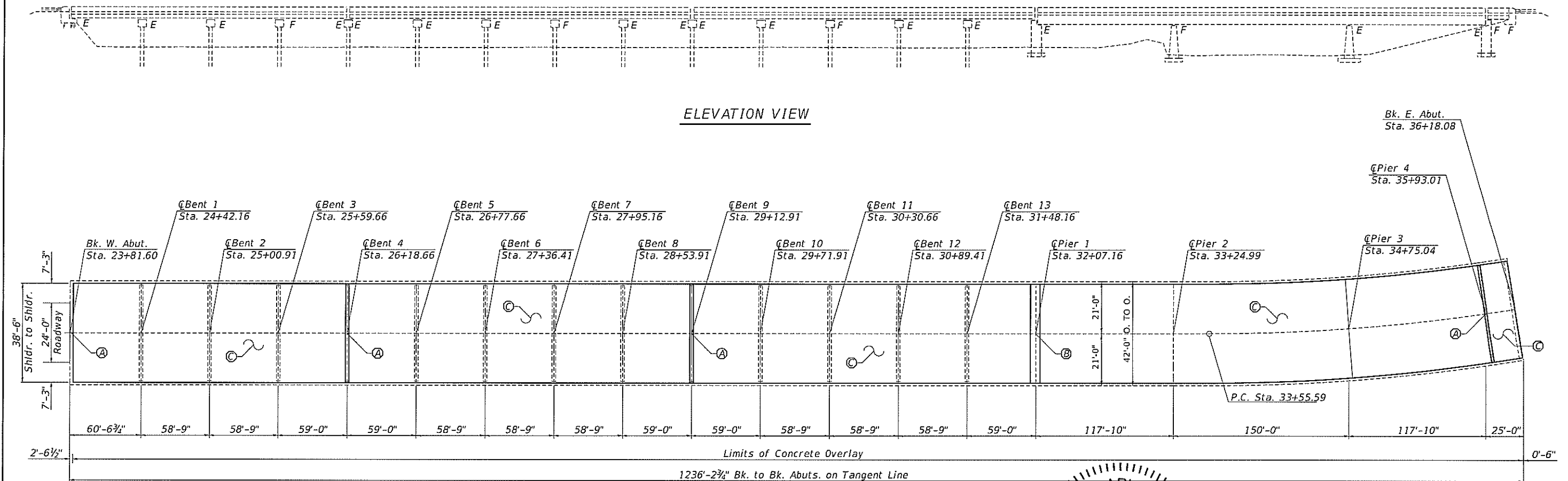
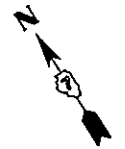
** D7 BRIDGE DECK REPAIRS 2020-1

STATE OF ILLINOIS DEPARTMENT OF TRANSPORTATION				TRAFFIC CONTROL STAGE 2				F.A.S RTE.	SECTION	COUNTY	TOTAL SHEETS	SHEET NO.
				SCALE:	SHEET	OF	SHEETS	STA.	TO STA.			
								1807	**	LAWRENCE	20	9
								CONTRACT NO. 74912				
								ILLINOIS FED. AID PROJECT				

USER NAME	= steffenmk	DESIGNED	-
DRAWN	-	REVISED	-
PLOT SCALE	= 40,0000 ' / in.	CHECKED	-
PLOT DATE	= 8/29/2019	DATE	-

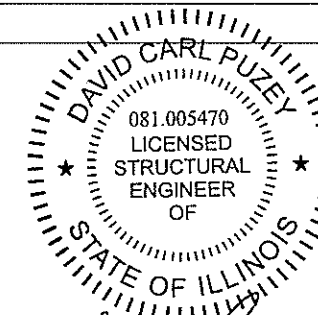
REVISED	-
REVISED	-
REVISED	-
REVISED	-

The existing multi-span prestressed concrete beam and steel plate girder structure was constructed in 1975 as F.A. Route 1 Section 1B-1. SN. 051-0053 carries FAS Route 1807 (Business US-50) across the Embarras River. The proposed project consists of HMA surface removal (Deck), bridge deck scarification, full depth deck patching, placing Bridge Deck Fly Ash or GGBF Slag Concrete Overlay and replacing the strip seal glands of the strip seal joints.



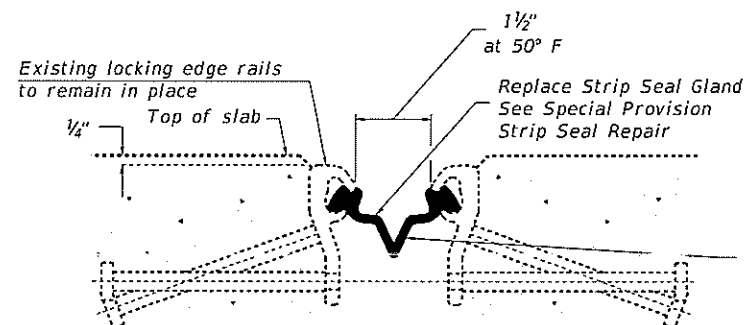
Note: Existing full depth concrete patches were finished flush with the top of the existing bituminous wearing surface at all original floor drain locations. The Contractor shall work around these existing patches while removing the existing bituminous surface and placing the Concrete Overlay. See pgs. 3 of 6 thru 6 of 6 for patch locations.

PLAN VIEW



David Carl Puzey 9/30/19
Expires 1/30/20

- Ⓐ Existing strip seal joint to remain in place. Replace strip seal gland (see detail).
- Ⓑ Existing finger joint to remain in place.
- Ⓒ HMA Surface Removal and Bridge Deck Fly Ash or GGBF Slag Concrete Overlay 3 1/4".



SECTION THRU STRIP SEAL JOINT

TOTAL BILL OF MATERIAL

ITEM	UNIT	QUANTITY
Deck Slab Repair (Full Depth, Type I)	Sq Yd	3.0
Deck Slab Repair (Full Depth, Type II)	Sq Yd	35.0
Strip Seal Gland Replacement	Foot	168
HMA Surface Removal (Deck)	Sq Yd	5130
Bridge Deck Scarification, 3/4"	Sq Yd	5130
Bridge Deck Fly Ash or GGBF Slag Conc. Oly. 3 1/4"	Sq Yd	5130
Bridge Deck Grooving	Sq Yd	5005
Protective Coat	Sq Yd	5279

** D7 Bridge Deck Repairs 2020-1

USER NAME = stefferink	DESIGNED R. Walker	REVISED -
	DRAWN R. Walker	REVISED -
PLOT SCALE = 40,0000' / in.	CHECKED D. Macklin	REVISED -
PLOT DATE = 8/29/2019	DATE 4/12/2019	REVISED -

STATE OF ILLINOIS
DEPARTMENT OF TRANSPORTATION

GENERAL PLAN & ELEVATION
SN 051-0053

SCALE: SHEET NO. 1 OF 7 SHEETS STA. TO STA.

F.A.S. RTE.	SECTION	COUNTY	TOTAL SHEETS	SHEET NO.
1807	**	LAWRENCE	20	10
FED. ROAD DIST. NO. [ILLINOIS] FED. AID PROJECT			CONTRACT NO. 74912	

STRUCTURE NOTES

Plans dimensions and details relative to existing plans are subject to nominal construction variations. Contractor shall field verify existing dimensions and details affecting new construction and make necessary approved adjustments prior to construction or ordering of materials. Such variations shall not be cause for additional compensation for a change in scope of work, however, the Contractor will be paid for the quantity actually furnished at the unit price bid for the work.

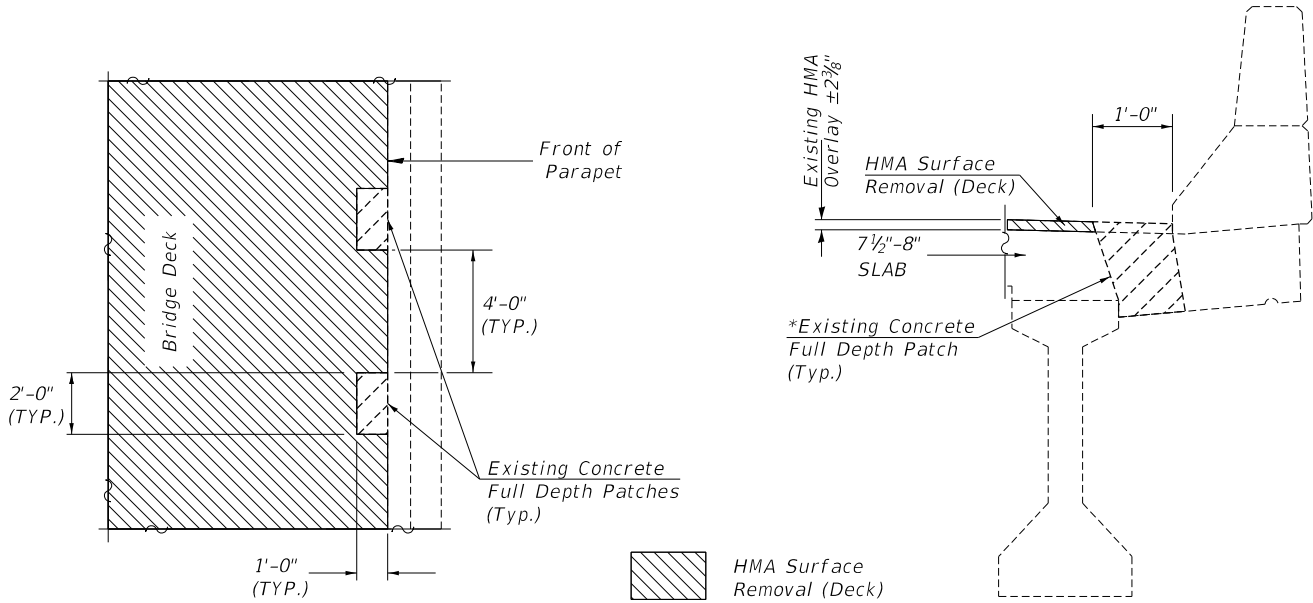
Existing reinforcement bars extending into the removal area shall be cleaned, straightened and incorporated into the new construction. Any reinforcement bars that are damaged during concrete removal operations shall be replaced using an approved bar splicer or anchorage system. Cost included with concrete removal.

Areas of deck repairs shown are estimated. The Engineer shall show actual locations of deck repairs on as-built plans.

Synthetic fibers should be added to the Bridge Deck Fly Ash or GGBF Slag Overlay, 3 1/4". See Special Provisions.

The Bridge Deck Fly Ash or GGBF Slag Overlay 3 1/4" shall be finished flush with the existing concrete deck surface at expansion joints and existing concrete patches at drain locations.

Full depth deck slab repairs performed in the exterior bays of the bridge deck (between the parapet walls and the first interior beams) shall be limited to individual lengths no greater than 10'. In these portions of the deck, repair areas longer than 10' shall be divided into segments not greater than 10' in length, and the segments shall be poured in alternating sequence. Subsequent segments repaired in sequence shall not be removed until 72 hours has elapsed from the end of the previous, adjacent pour and the adjacent pour has attained a minimum modulus of rupture of 650 psi.

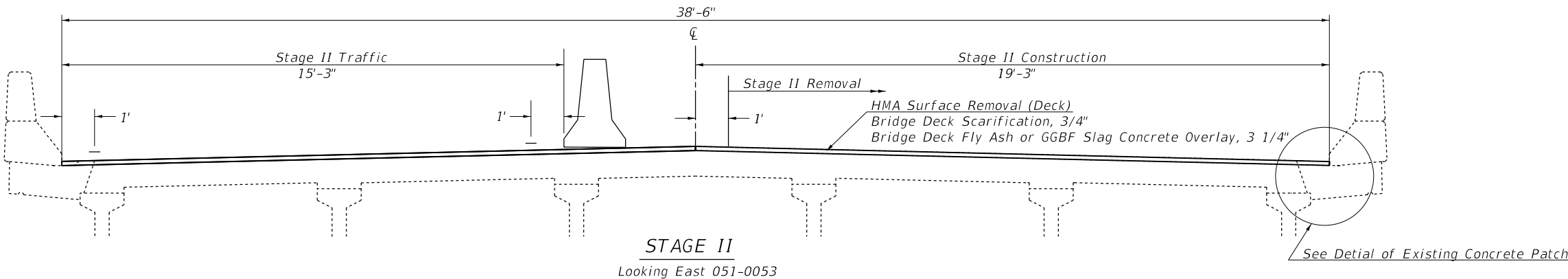
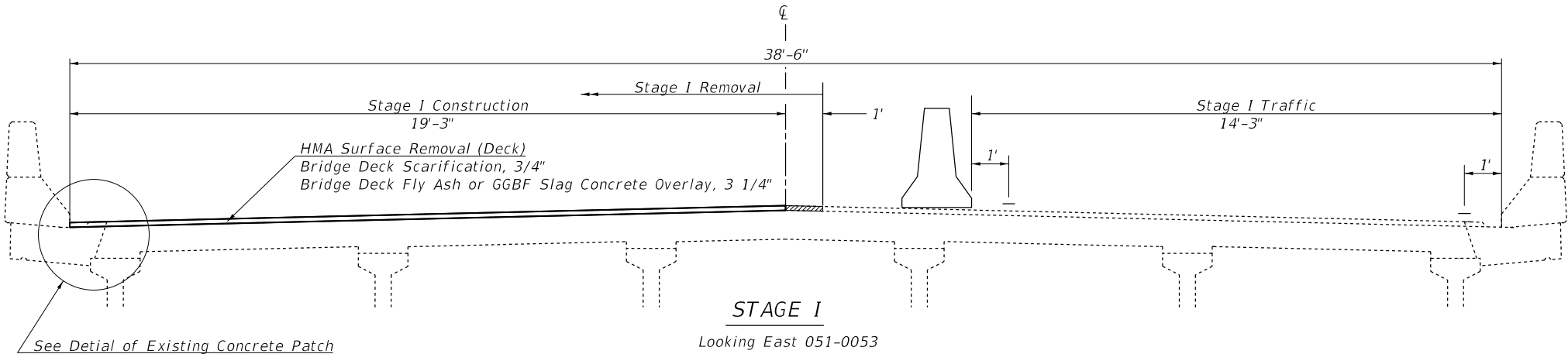


PLAN VIEW OF TYPICAL EXISTING CONCRETE FULL DEPTH PATCHES

DETAIL OF EXISTING CONCRETE PATCH AT EXISTING AND PLUGGED FLOOR DRAIN LOCATIONS

203 Existing full depth concrete patches along north parapet.
169 Existing full depth concrete patches along south parapet.

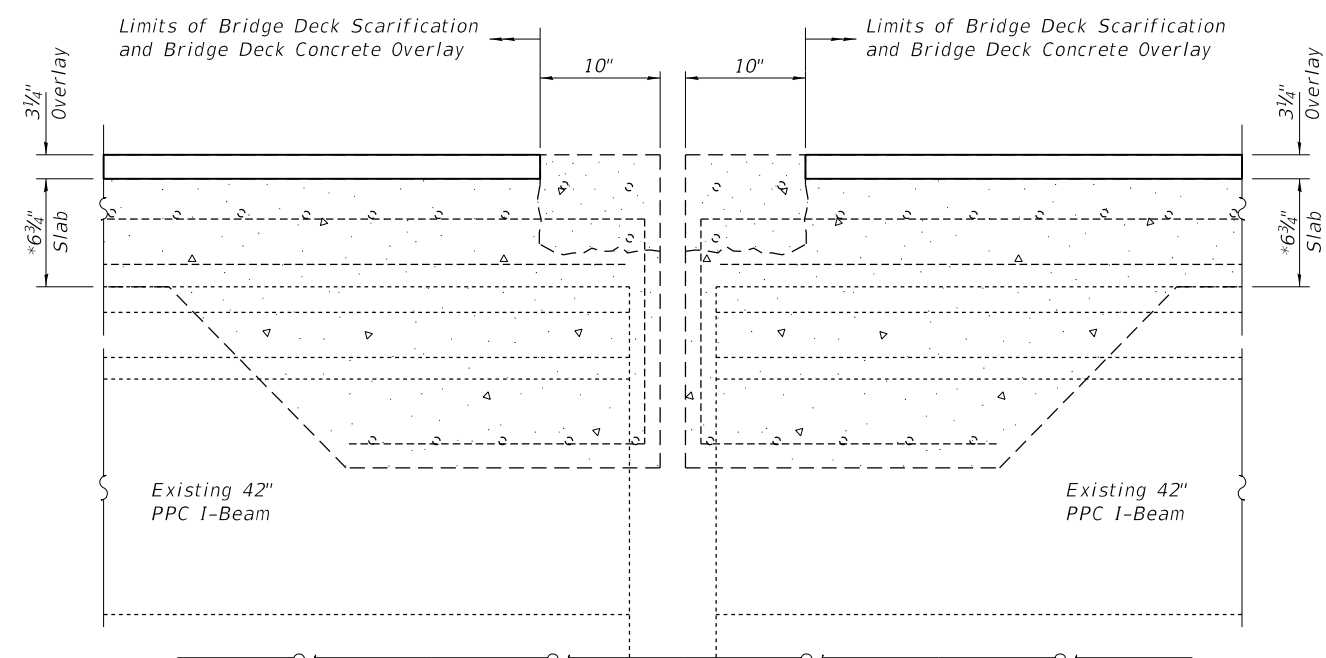
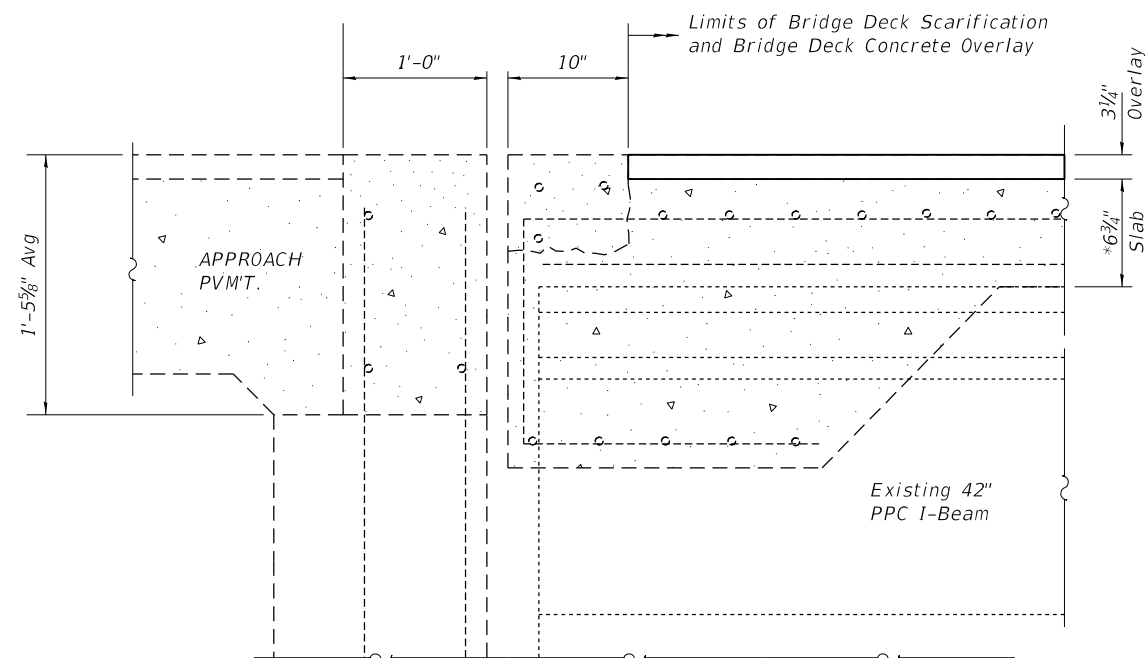
* Existing full depth concrete patches were finished flush with the top of the existing bituminous wearing surface. The Contractor shall work around these existing patches while removing the existing bituminous surface and placing the Concrete Overlay.



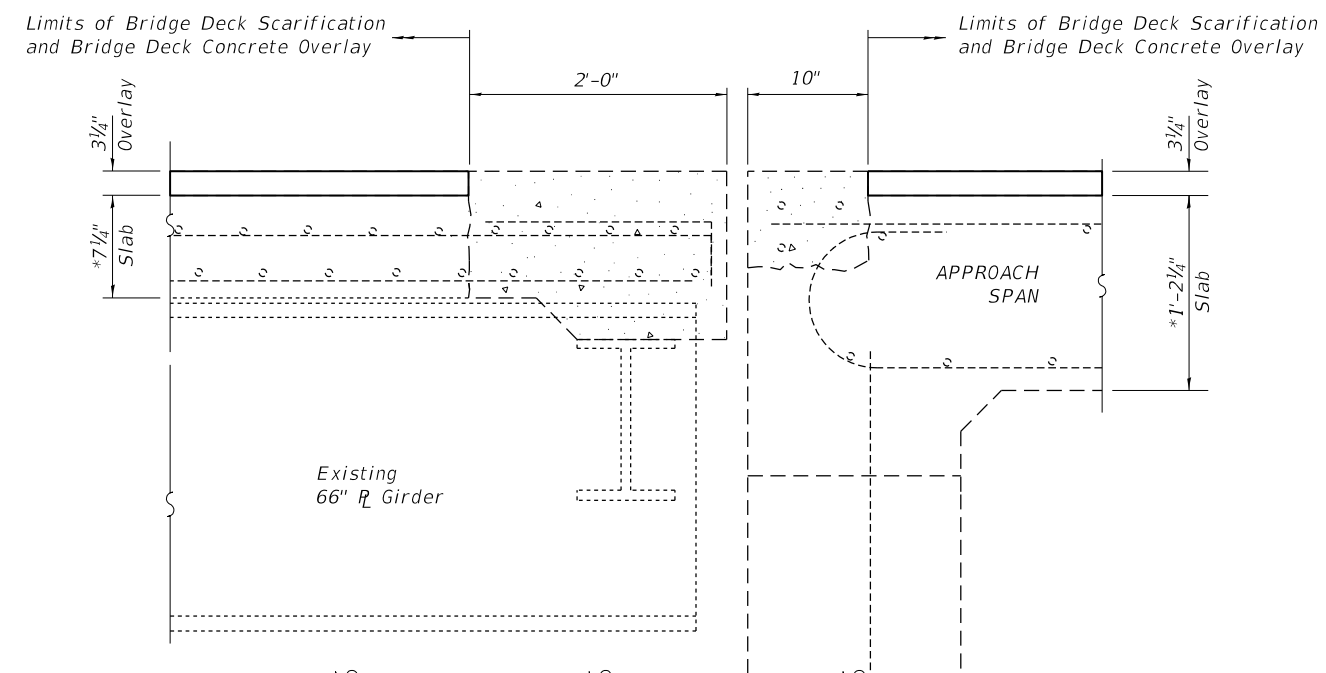
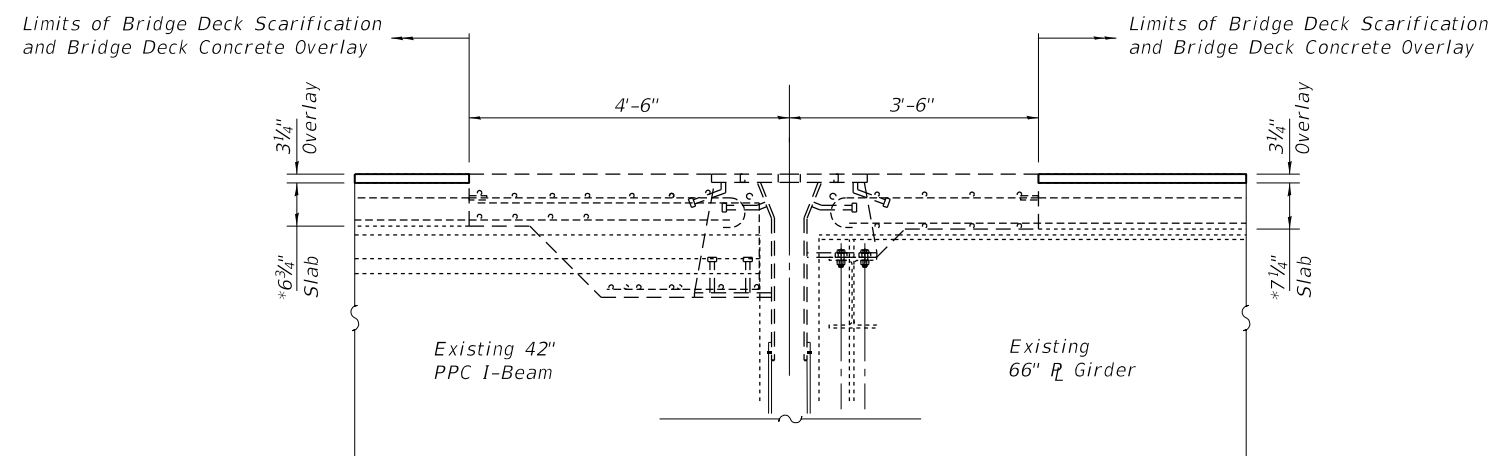
** D7 Bridge Deck Repairs 2020-1

MODEL: Default
FILE: \\nrcs-prod\pub\anr\om\ad\illinois\gov\p\WIDOT\Documents\DOT Office\District 7\Projects\74912\CADDData\CADDsheets\0774912-shd-bd-deck-repairs.dgn

USER NAME = steffennmk DRAWN - R. Walker PLOT SCALE = 100.0000 ' / in. PLOT DATE = 8/29/2019	DESIGNED - R. Walker CHECKED - D. Macklin DATE - 5/7/2019	REVISED - REVISED - REVISED - REVISED -	STATE OF ILLINOIS DEPARTMENT OF TRANSPORTATION	STAGE CONSTRUCTION DETAILS SN 051-0053	SCALE: SHEET 2 OF 7 SHEETS STA. TO STA.	F.A.S. RTE.	SECTION	COUNTY	TOTAL SHEETS	SHEET NO.
						1807	**	LAWRENCE	20	11
						CONTRACT NO. 74912				
						ILLINOIS FED. AID PROJECT				



* Deck thickness after Bridge Deck Scarification $\frac{3}{4}$ "



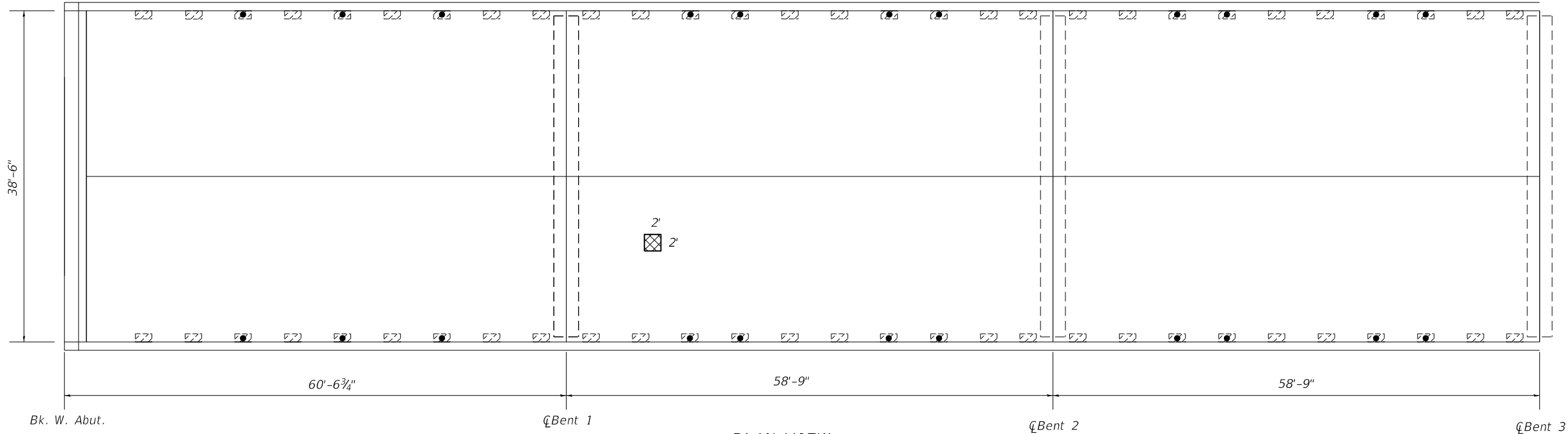
USER NAME = steffenmk	DESIGNED - R. Walker	REVISED -
	DRAWN - R. Walker	REVISED -
PLOT SCALE = 40,0000 ' / in.	CHECKED - D. Macklin	REVISED -
PLOT DATE = 8/29/2019	DATE - 5/7/2019	REVISED -

**STATE OF ILLINOIS
DEPARTMENT OF TRANSPORTATION**

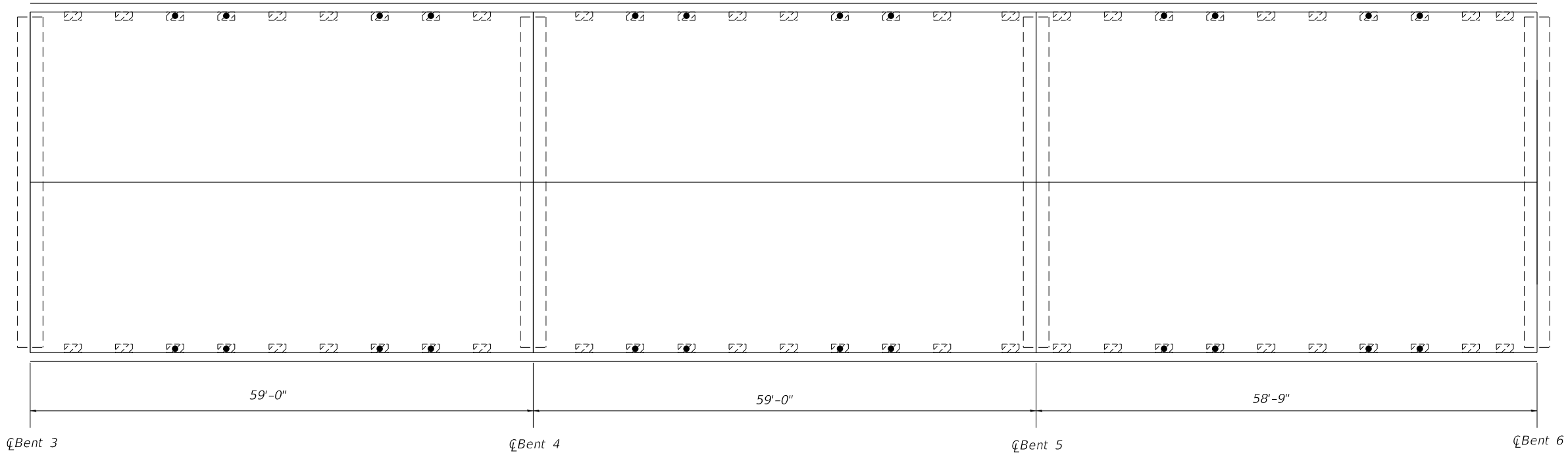
EXISTING EXPANSION JOINT DETAILS
SN 051-0053

SCALE:	SHEET 3 OF 7 SHEETS	STA.	TO STA.
--------	---------------------	------	---------


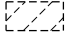

** D7 Bridge Deck Repairs 2020-1				
F.A.S. RTE.	SECTION	COUNTY	TOTAL SHEETS	SHEET NO.
1807	**	LAWRENCE	20	12
		CONTRACT NO. 74912		
		ILLINOIS	FED. AID PROJECT	



PLAN VIEW
(Spans 1-3 From West)



PLAN VIEW
(Spans 4-6 From West)

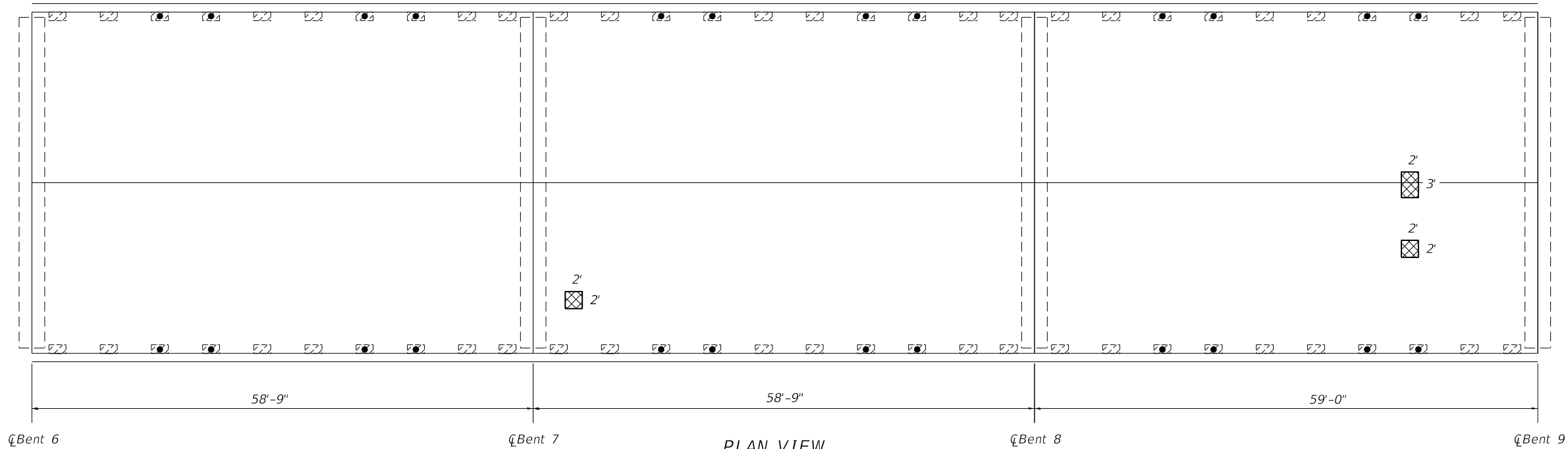
-  Proposed Full Depth Concrete Patch
-  Existing Full Depth Concrete Patch - Eliminated Floor Drain
-  Existing Full Depth Concrete Patch - With Floor Drain

SPANS 1-6 PATCHING QTY

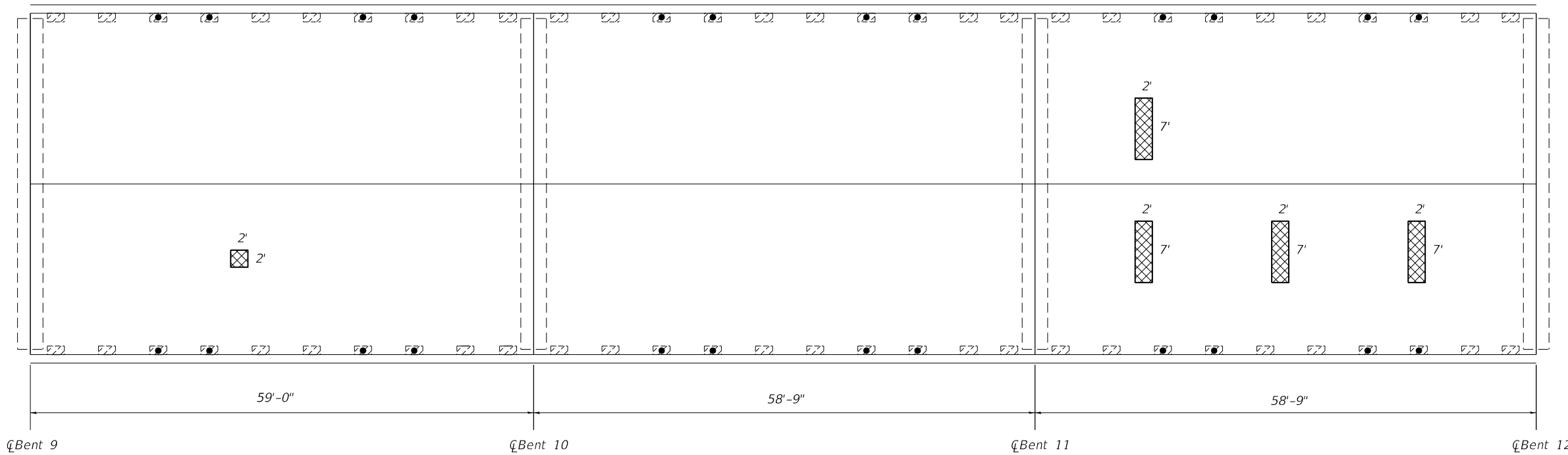
ITEM	UNIT	QUANTITY
Deck Slab Repair (Full Depth, Type I)	Sq Yd	0.4
Deck Slab Repair (Full Depth, Type II)	Sq Yd	0

** D7 Bridge Deck Repairs 2020-1


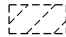

	USER NAME = \$USER\$	DESIGNED <i>R. Walker</i>	REVISED -	STATE OF ILLINOIS DEPARTMENT OF TRANSPORTATION	BRIDGE DECK PATCHING SN 051-0053			F.A.S. RTE.	SECTION	COUNTY	TOTAL SHEETS	SHEET NO.
		DRAWN <i>R. Walker</i>	REVISED -					1807	**	LAWRENCE	20	13
	PLOT SCALE = \$SCALE\$	CHECKED <i>D. Macklin</i>	REVISED -					CONTRACT NO. 74912				
	PLOT DATE = \$DATE\$	DATE <i>4/12/2019</i>	REVISED -		SCALE:	SHEET NO. 4 OF 7 SHEETS	STA.	TO STA.	FED. ROAD DIST. NO.	ILLINOIS	FED. AID PROJECT	



PLAN VIEW
(Spans 7-9 From West)



PLAN VIEW
(Spans 10-12 From West)

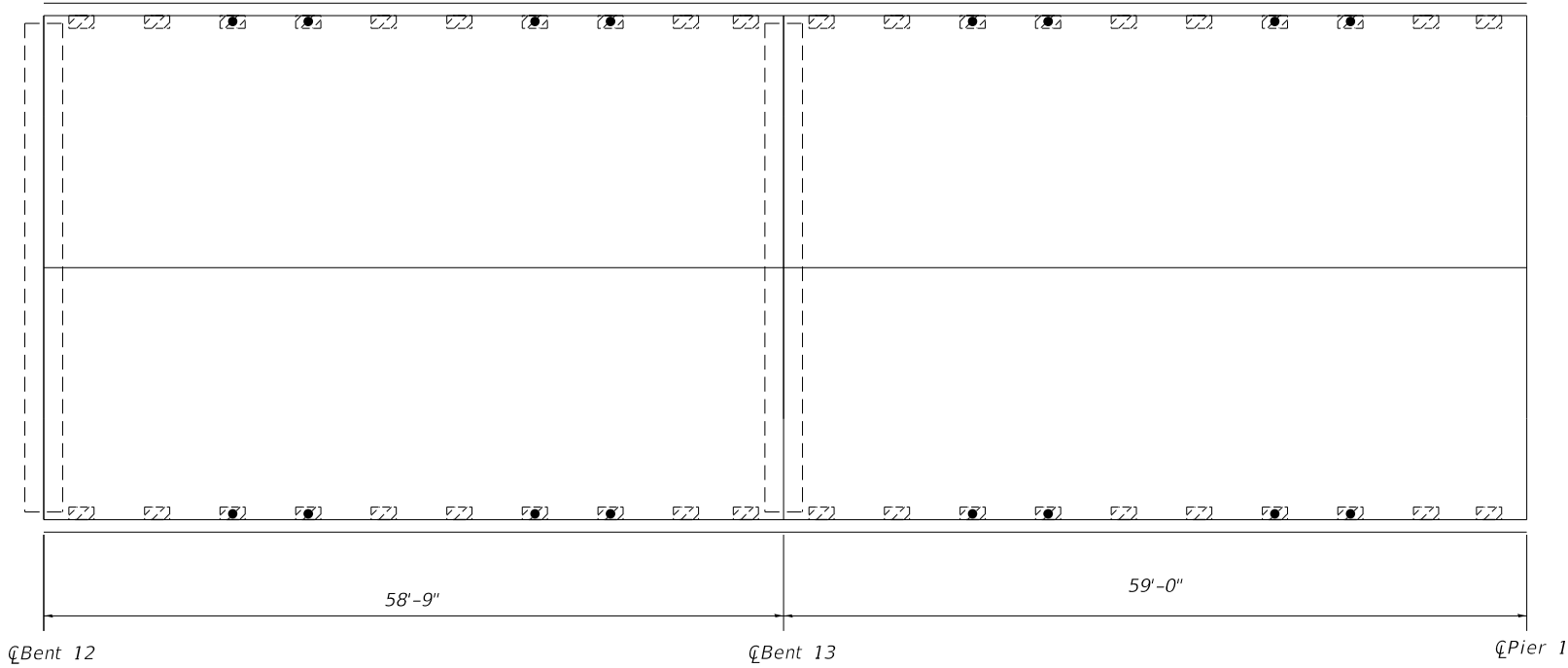
-  Proposed Full Depth Concrete Patch
-  Existing Full Depth Concrete Patch - Eliminated Floor Drain
-  Existing Full Depth Concrete Patch - With Floor Drain

SPANS 7-12 PATCHING QTY

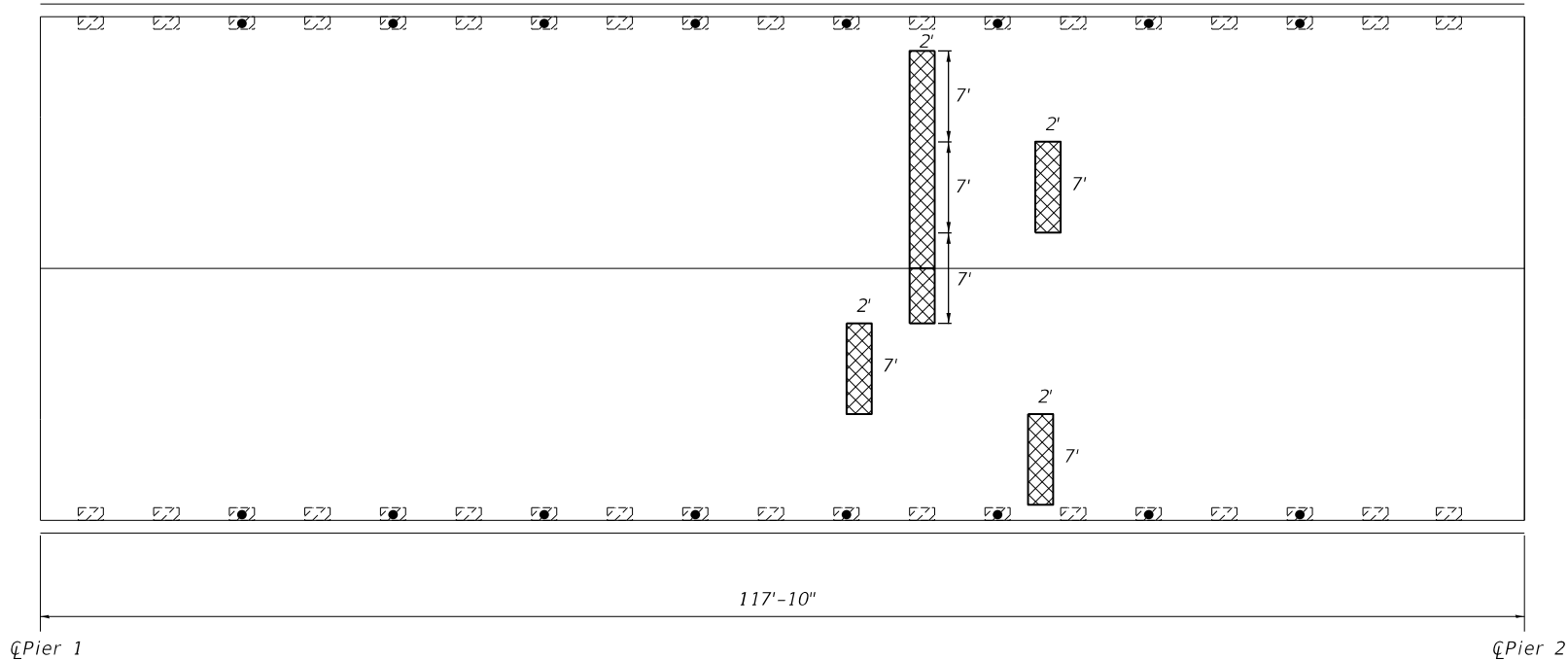
ITEM	UNIT	QUANTITY
Deck Slab Repair (Full Depth, Type I)	Sq Yd	1.3
Deck Slab Repair (Full Depth, Type II)	Sq Yd	6.9

** D7 Bridge Deck Repairs 2020-1

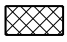
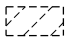

	USER NAME = \$USER\$	DESIGNED <i>R. Walker</i>	REVISED -	STATE OF ILLINOIS DEPARTMENT OF TRANSPORTATION	BRIDGE DECK PATCHING SN 051-0053			F.A.S. RTE.	SECTION	COUNTY	TOTAL SHEETS	SHEET NO.	
		DRAWN <i>R. Walker</i>	REVISED -					1807	**	LAWRENCE	20	14	
	PLOT SCALE = \$SCALE\$	CHECKED <i>D. Macklin</i>	REVISED -					CONTRACT NO. 74912					
	PLOT DATE = \$DATE\$	DATE <i>4/12/2019</i>	REVISED -										
SCALE:		SHEET NO. 5 OF 7 SHEETS		STA.		TO STA.		FED. ROAD DIST. NO.		ILLINOIS		FED. AID PROJECT	



PLAN VIEW
(Spans 13-14 From West)



PLAN VIEW
(Span 15 From West)

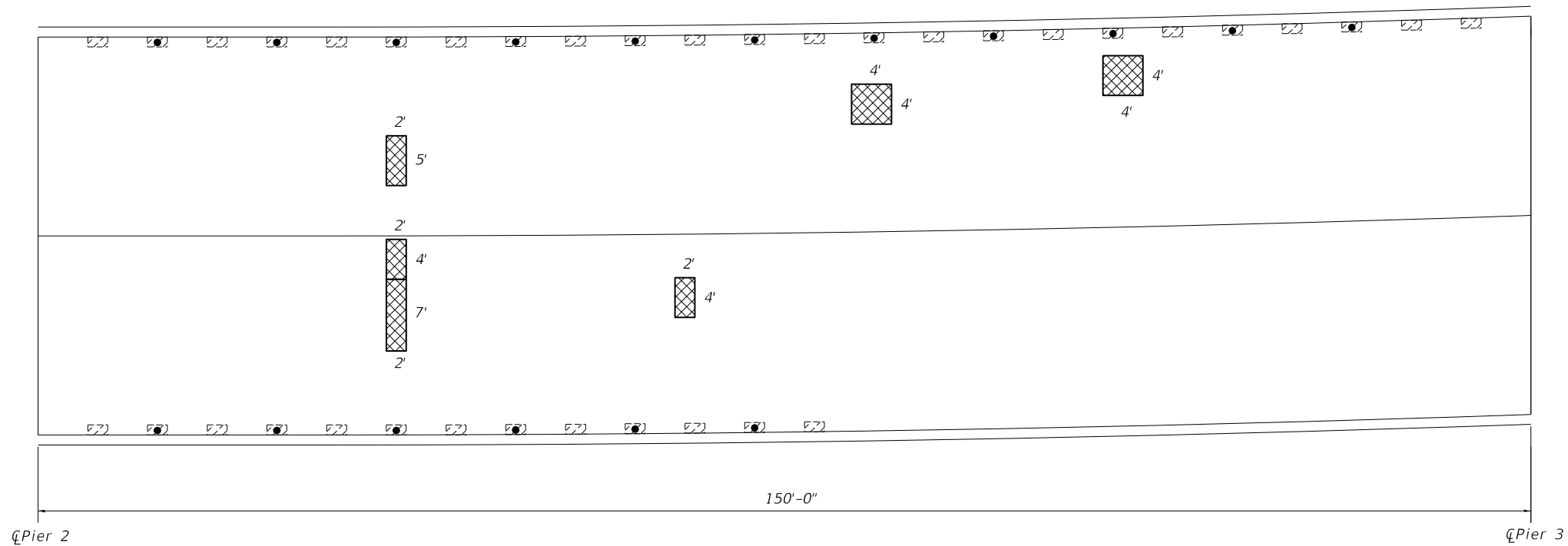
-  Proposed Full Depth Concrete Patch
-  Existing Full Depth Concrete Patch - Eliminated Floor Drain
-  Existing Full Depth Concrete Patch - With Floor Drain

SPANS 13-15 PATCHING QTY

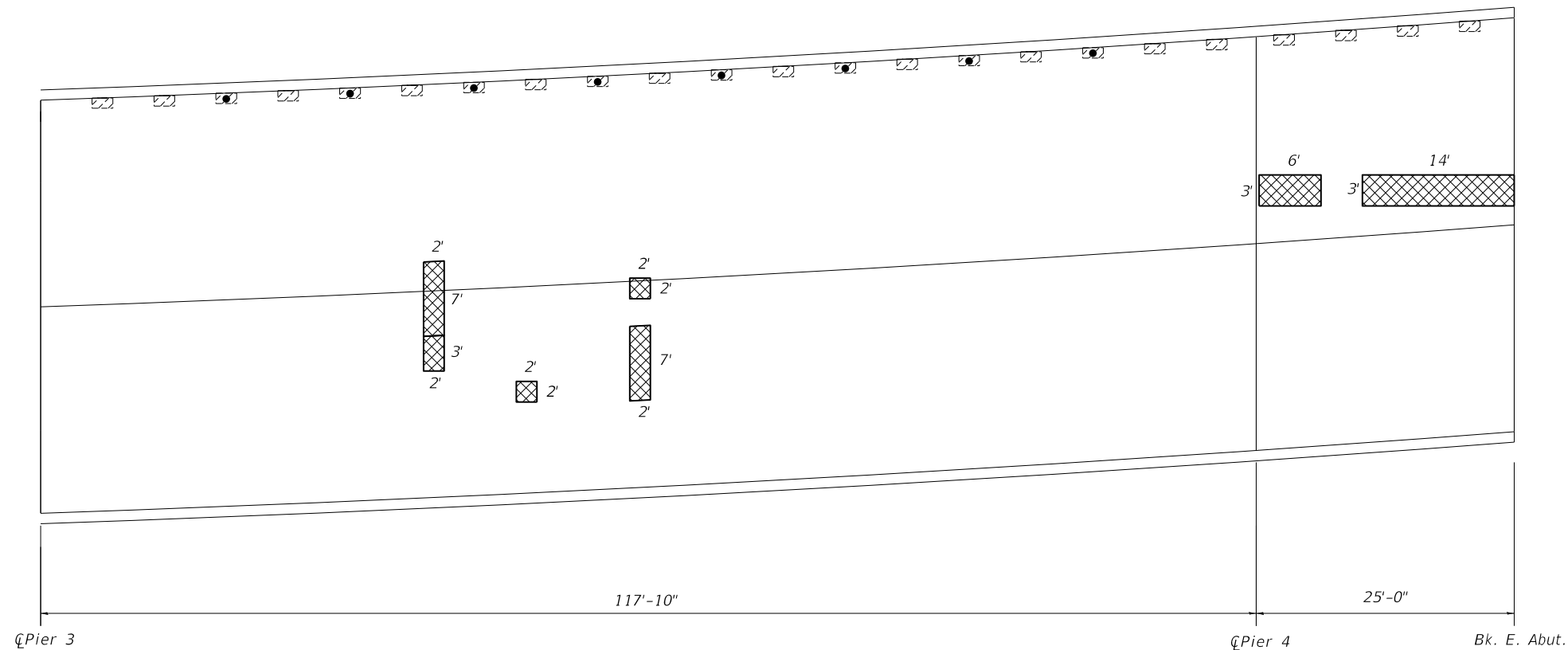
ITEM	UNIT	QUANTITY
Deck Slab Repair (Full Depth, Type I)	Sq Yd	0
Deck Slab Repair (Full Depth, Type II)	Sq Yd	9.3

** D7 Bridge Deck Repairs 2020-1


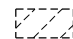

	USER NAME = steffemk	DESIGNED <i>R. Walker</i>	REVISED -	STATE OF ILLINOIS DEPARTMENT OF TRANSPORTATION	BRIDGE DECK PATCHING SN 051-0053			F.A.S. RTE.	SECTION	COUNTY	TOTAL SHEETS	SHEET NO.	
		DRAWN <i>R. Walker</i>	REVISED -					1807	**	LAWRENCE	20	15	
	PLOT SCALE = 40.0000 ' / in.	CHECKED <i>D. Macklin</i>	REVISED -		SCALE:			SHEET NO. 6 OF 7 SHEETS		STA.	TO STA.	CONTRACT NO. 74912	
	PLOT DATE = 8/29/2019	DATE <i>4/12/2019</i>	REVISED -							ILLINOIS FED. AID PROJECT			



PLAN VIEW
(Span 16 From West)



PLAN VIEW
(Spans 17-18 From West)

-  Proposed Full Depth Concrete Patch
-  Existing Full Depth Concrete Patch - Eliminated Floor Drain
-  Existing Full Depth Concrete Patch - With Floor Drain

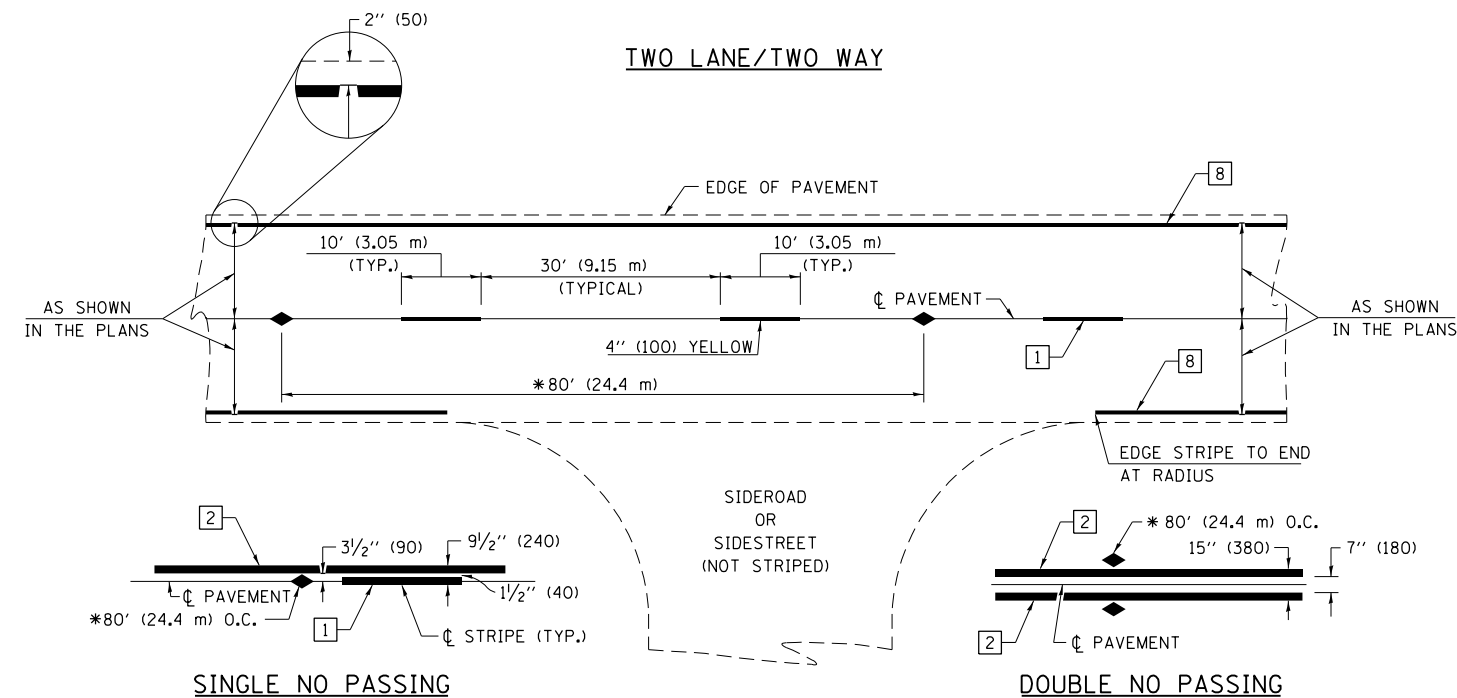
SPANS 16-18 PATCHING QTY

ITEM	UNIT	QUANTITY
Deck Slab Repair (Full Depth, Type I)	Sq Yd	0.9
Deck Slab Repair (Full Depth, Type II)	Sq Yd	18.4

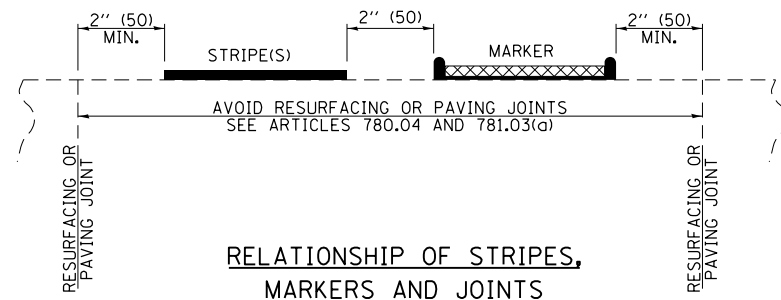
** D7 Bridge Deck Repairs 2020-1

	USER NAME : steffenmk	DESIGNED R. Walker	REVISED -	STATE OF ILLINOIS DEPARTMENT OF TRANSPORTATION	BRIDGE DECK PATCHING SN 051-0053			F.A.S. RTE.	SECTION	COUNTY	TOTAL SHEETS	SHEET NO.
		DRAWN R. Walker	REVISED -					1807	**	LAWRENCE	20	16
	PLOT SCALE : 40.0000' / in.	CHECKED D. Macklin	REVISED -		SCALE:			SHEET NO. 7 OF 7 SHEETS		STA.	TO STA.	FED. ROAD DIST. NO.
	PLOT DATE : 8/29/2019	DATE 4/12/2019	REVISED -							CONTRACT NO. 74912		

ILLINOIS FED. AID PROJECT



* REDUCE TO 40' (12.2 m) O.C. ON CURVES WITH POSTED OR ADVISORY SPEEDS OF 45 mph (70 km/h) OR LESS.



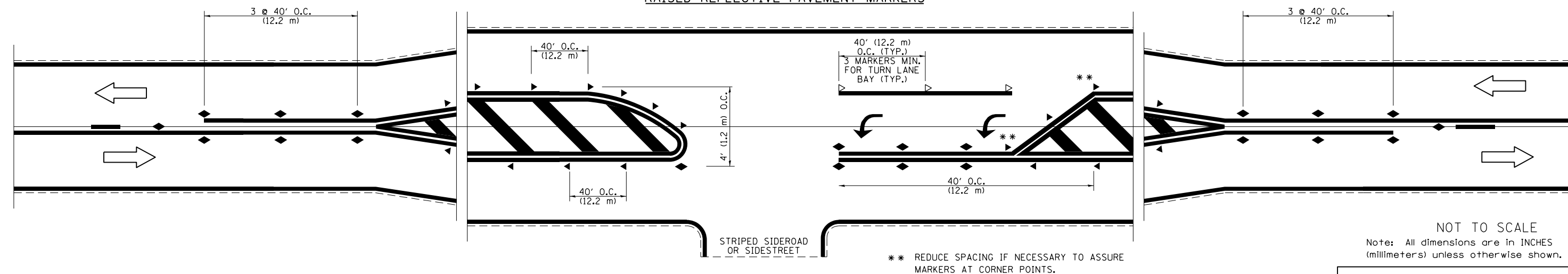
PAVEMENT MARKING LEGEND

- | | |
|-----------------------------------|--|
| 1 4" (100) SKIP-DASH (YELLOW) | |
| 2 4" (100) SOLID (YELLOW) | |
| 3 12" (300) DIAGONAL (YELLOW) | |
| 4 4" (100) DOUBLE YELLOW (NARROW) | |
| 5 12" (300) SOLID WHITE | |
| 6 RESERVED | |
| 7 6" (150) SKIP-DASH (WHITE) | |
| 8 4" (100) SOLID (WHITE) | |
| 9 12" (300) DIAGONAL (WHITE) | |
| 10 6" (150) SOLID (WHITE) | |
| 11 24" (600) STOP BAR (WHITE) | |
| 12 8" (200) SOLID (WHITE) | |
| 13 4" (100) PARKING WHITE | |

TYPICAL PAVEMENT MARKERS LEGEND

- ◆ TWO-WAY AMBER MARKER
- ▶ ONE-WAY AMBER MARKER
- ▷ ONE-WAY CRYSTAL MARKER

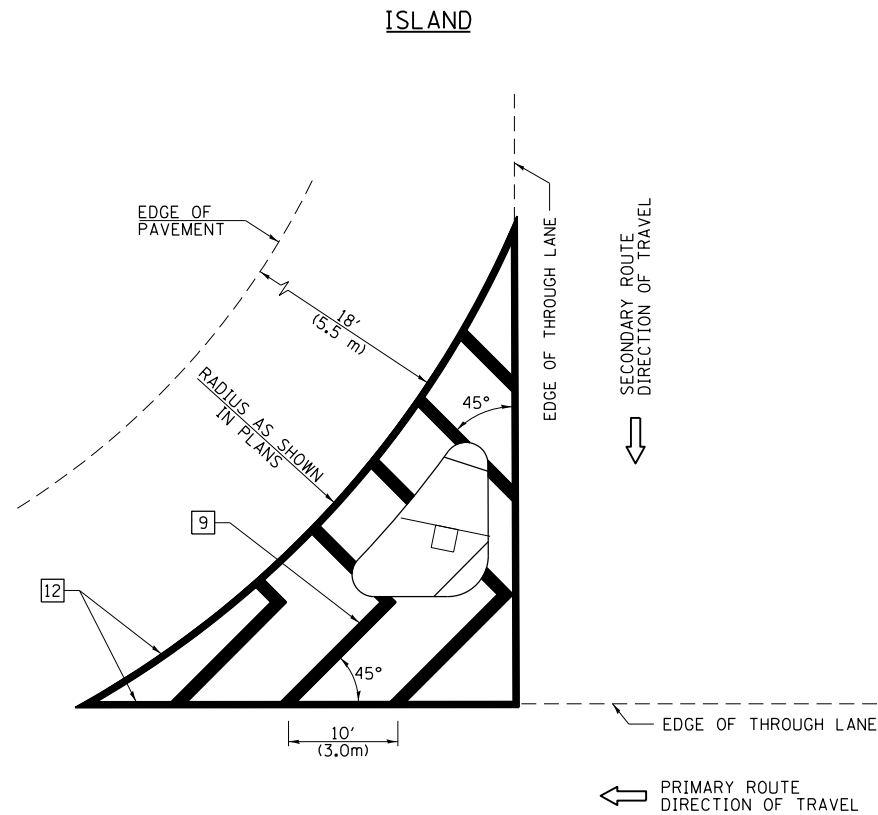
RAISED REFLECTIVE PAVEMENT MARKERS



NOT TO SCALE
Note: All dimensions are in INCHES (millimeters) unless otherwise shown.

DISTRICT 7 DETAIL NO. 78000001

FILE NAME =	USER NAME = steffenmk	DESIGNED -	REVISED -	STATE OF ILLINOIS DEPARTMENT OF TRANSPORTATION	PAVEMENT MARKING AND RAISED REFLECTIVE PAVEMENT MARKERS (RURAL & URBAN APPLICATIONS)		F.A.S. RTE.	SECTION	COUNTY	TOTAL SHEETS	SHEET NO.
pw:\planroom\dotillinois.gov\PWIDOT\Documents\IDOT Offices\District 7\Projects\74912\CDRAW\CADsheets\0774912-sht-d7standard.dgn		CHECKED -	REVISED -				1807	**	LAWRENCE	20	17
		DATE -	REVISED -							CONTRACT NO.	74912
										ILLINOIS FED. AID PROJECT	



GENERAL NOTES

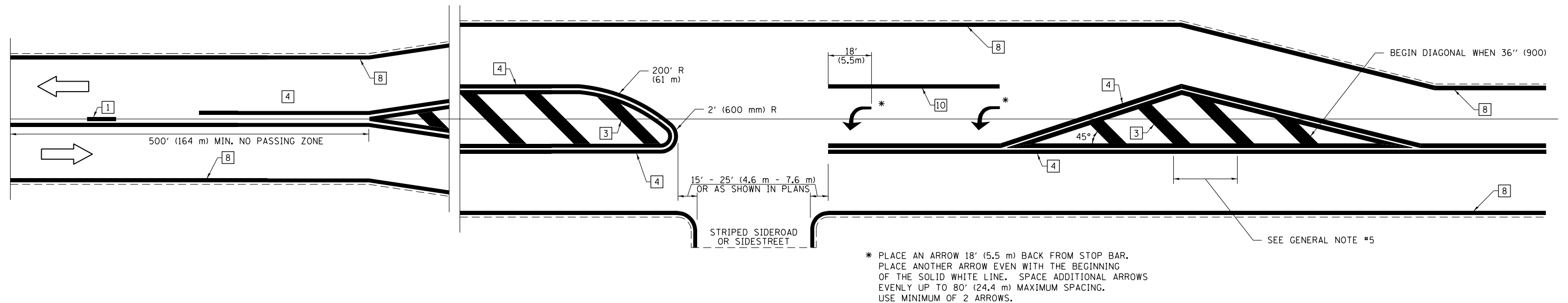
1. RAISED AND CORRUGATED MEDIANS SHALL BE OUTLINED WITH [2] IF PRESENT.
2. SOME OF THE INFORMATION INCLUDED WITH THIS DETAIL MAY NOT BE APPLICABLE TO THIS IMPROVEMENT.
3. PAVEMENT MARKINGS ARE TO BE EXTENDED THROUGH OMISSIONS WHEN APPLICABLE.
4. FINAL PAVEMENT MARKINGS SHALL BE IN PLACE PRIOR TO PLACING ANY RAISED REFLECTIVE PAVEMENT MARKERS.
5. THE FOLLOWING CRITERIA SHALL BE USED FOR SELECTING THE DIAGONAL PAVEMENT MARKING SPACING:

< 30 MPH (< 50 km/h)	15' (4.5 m)
30-45 MPH (50-75 km/h)	20' (6.0 m)
> 45 MPH (> 75 km/h)	30' (9.0 m)

PAVEMENT MARKING LEGEND

- | | |
|-------------------------------------|--|
| [1] 4" (100) SKIP-DASH (YELLOW) | |
| [2] 4" (100) SOLID (YELLOW) | |
| [3] 12" (300) DIAGONAL (YELLOW) | |
| [4] 4" (100) DOUBLE YELLOW (NARROW) | |
| [5] 12" (300) SOLID WHITE | |
| [6] RESERVED | |
| [7] 6" (150) SKIP-DASH (WHITE) | |
| [8] 4" (100) SOLID (WHITE) | |
| [9] 12" (300) DIAGONAL (WHITE) | |
| [10] 6" (150) SOLID (WHITE) | |
| [11] 24" (600) STOP BAR (WHITE) | |
| [12] 8" (200) SOLID (WHITE) | |
| [13] 4" (100) PARKING WHITE | |

RURAL LEFT TURN STRIPING



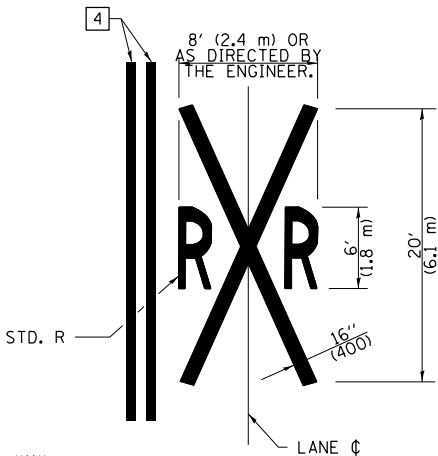
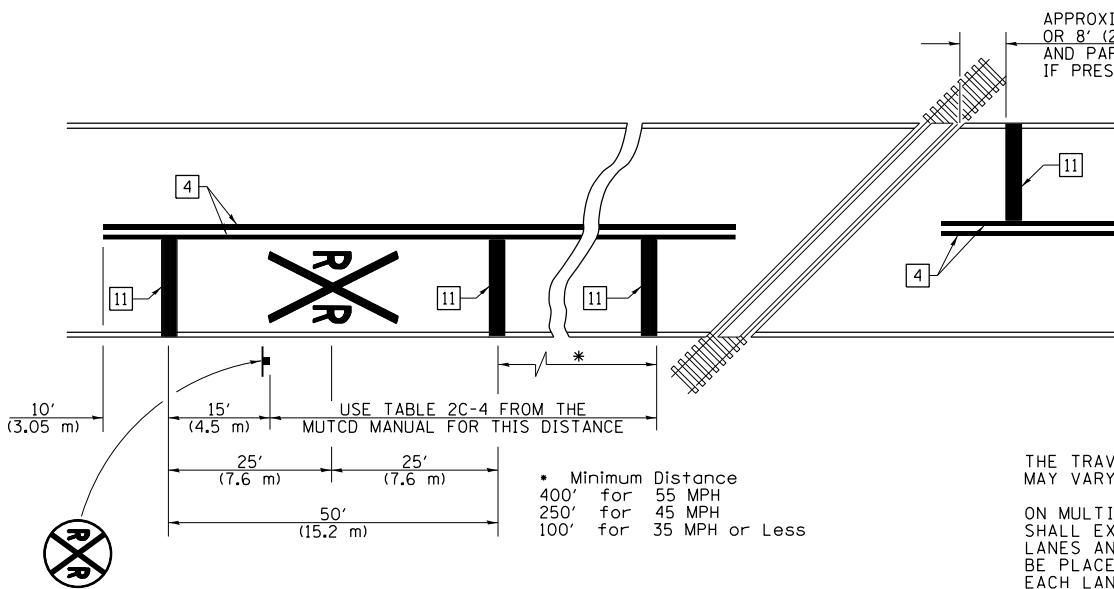
NOT TO SCALE

Note: All dimensions are in INCHES (millimeters) unless otherwise shown.

DISTRICT 7 DETAIL NO. 78000001

FILE NAME =	USER NAME = steffenmk	DESIGNED -	REVISED -	STATE OF ILLINOIS DEPARTMENT OF TRANSPORTATION	PAVEMENT MARKING AND RAISED REFLECTIVE PAVEMENT MARKERS (RURAL & URBAN APPLICATIONS)		F.A.S. RTE.	SECTION	COUNTY	TOTAL SHEETS	SHEET NO.
p:\planroom\dot.illinois.gov\PIDOT\Documents\IDOT Offices\District 7\Projects\74912\CDRAW\CADsheets\0774912-sht-d7standard		REVISOR -	REVISED -				1807	**	LAWRENCE	20	19
	PLOT SCALE = 2.0000' / in.	CHECKED -	REVISED -							CONTRACT NO.	74912
	PLOT DATE = 8/29/2019	DATE -	REVISED -							ILLINOIS FED. AID PROJECT	

PAVEMENT MARKINGS AT RAILROAD-HIGHWAY GRADE CROSSING



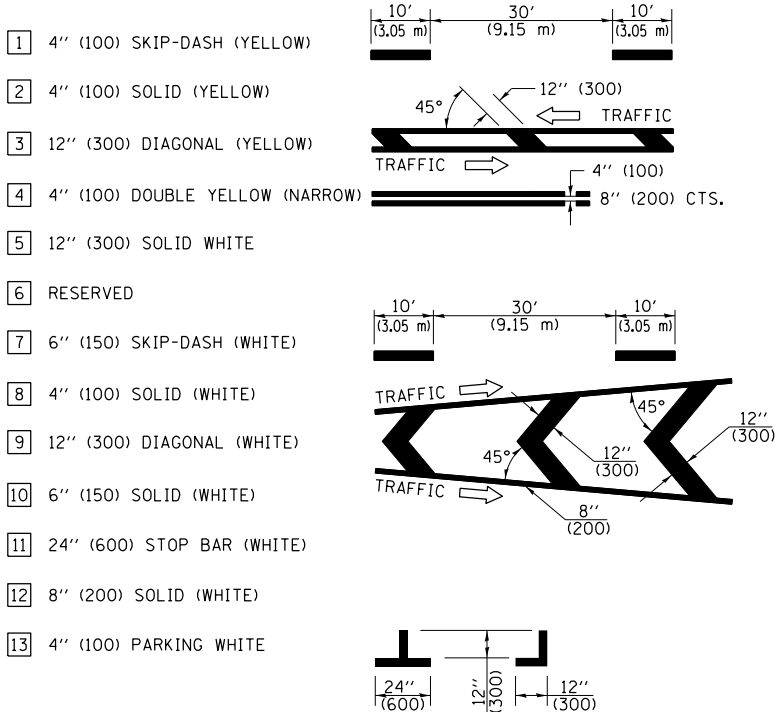
NOTES

THE TRAVERSE SPREAD OF THE "X" MAY VARY ACCORDING TO LANE WIDTH.

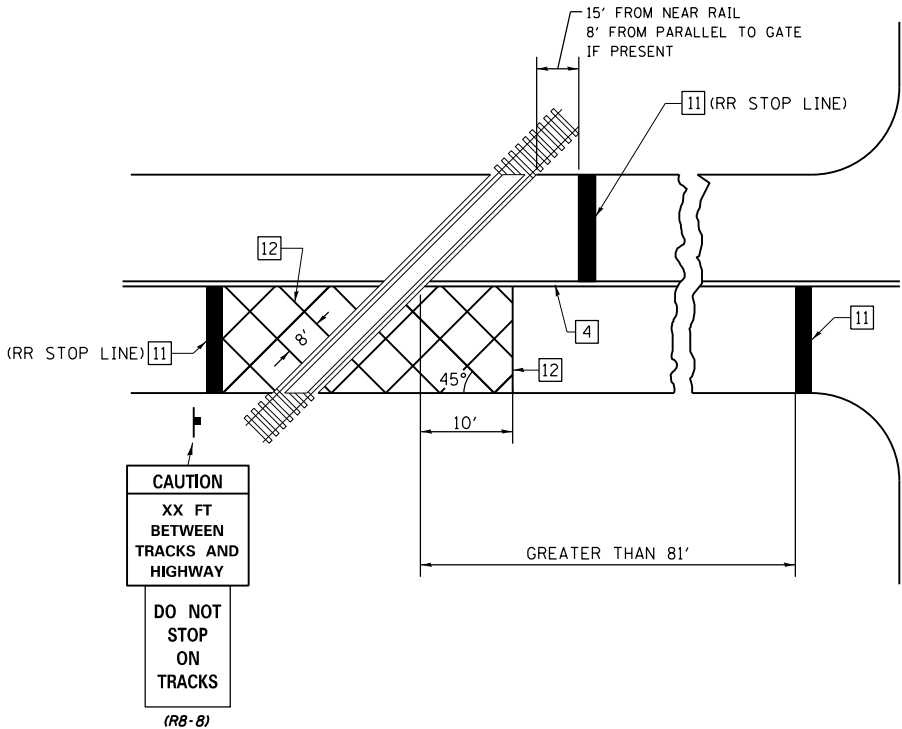
ON MULTI-LANE ROADS, THE STOP LINES SHALL EXTEND ACROSS ALL APPROACH LANES AND SEPARATE RXR SYMBOLS SHALL BE PLACED ADJACENT TO EACH OTHER IN EACH LANE.

WHEN THE PAVEMENT MARKING SYMBOL IS USED, A PORTION OF THE SYMBOL SHOULD BE LOCATED DIRECTLY ADJACENT TO THE ADVANCE WARNING SIGN (W10-1) AS PLACED BY TABLE II-1, CONDITION B OF THE MUTCD.

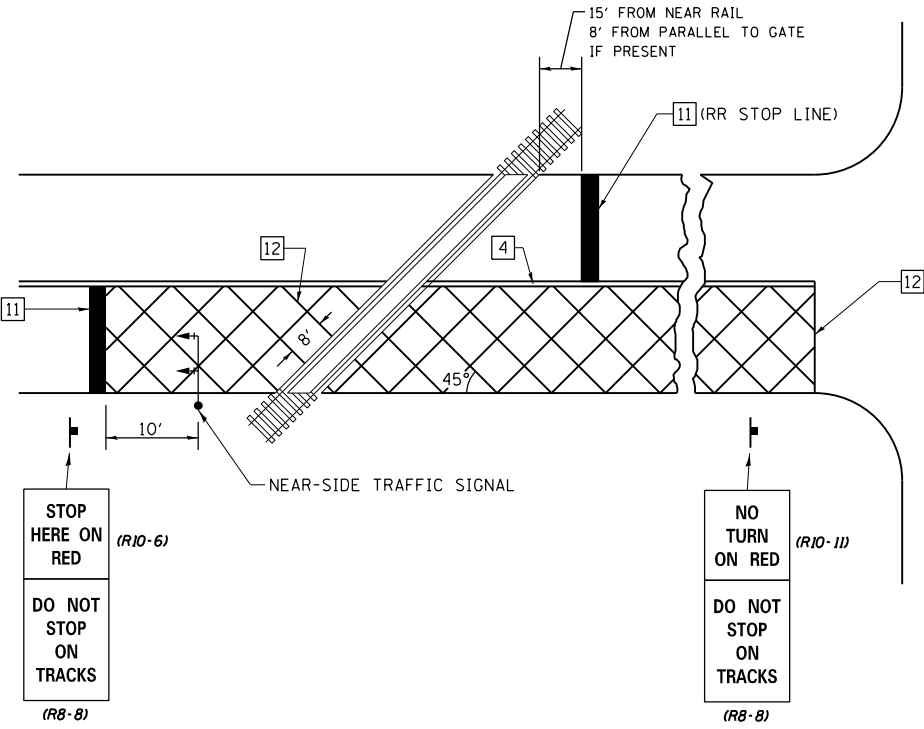
PAVEMENT MARKING LEGEND



RAILROAD CROSSING WITH INTERCONNECT ONLY



RAILROAD CROSSING WITH INTERCONNECT AND PRE-SIGNALS



GENERAL NOTES

- SUPPLEMENTAL PAVEMENT MARKINGS TO BE INSTALLED ONLY ON APPROACHES TO INTERSECTIONS CONTROLLED BY TRAFFIC SIGNALS WHICH ARE INTERCONNECTED WITH THE RAILROAD WARNING SIGNALS.
- EXTEND PAVEMENT MARKINGS TO THE INTERSECTION ONLY WHERE NEAR-SIDE TRAFFIC SIGNALS ARE USED.

SUPPLEMENTAL PAVEMENT MARKING TREATMENT FOR RAILROAD-HIGHWAY GRADE CROSSING

NOT TO SCALE

Note: All dimensions are in INCHES (millimeters) unless otherwise shown.

DISTRICT 7 DETAIL NO. 78000001

FILE NAME =	USER NAME = steffenmk	DESIGNED -	REVISED -	STATE OF ILLINOIS DEPARTMENT OF TRANSPORTATION	PAVEMENT MARKING AND RAISED REFLECTIVE PAVEMENT MARKERS (RURAL & URBAN APPLICATIONS)		F.A.S. RTE.	SECTION	COUNTY	TOTAL SHEETS	SHEET NO.
p:\planroom\dot.illinois.gov\PIWIDOT\Documents\IDOT Offices\District 7\Projects\74912\CDRAWN\CAD\sheds\0774912-shd-d7standard		CHECKED -	REVISED -				1807	**	LAWRENCE	20	20
		DATE -	REVISED -								