

INDEX OF SHEETS

SEE SHEET 2 FOR INDEX OF SHEETS

STATE OF ILLINOIS
DEPARTMENT OF TRANSPORTATION
DIVISION OF HIGHWAYS
**PROPOSED
HIGHWAY PLANS**

VARIOUS ROUTES
SECTION D4 ELECTRICAL 2020
VARIOUS COUNTIES

C-94-007-20

HIGHWAY STANDARDS

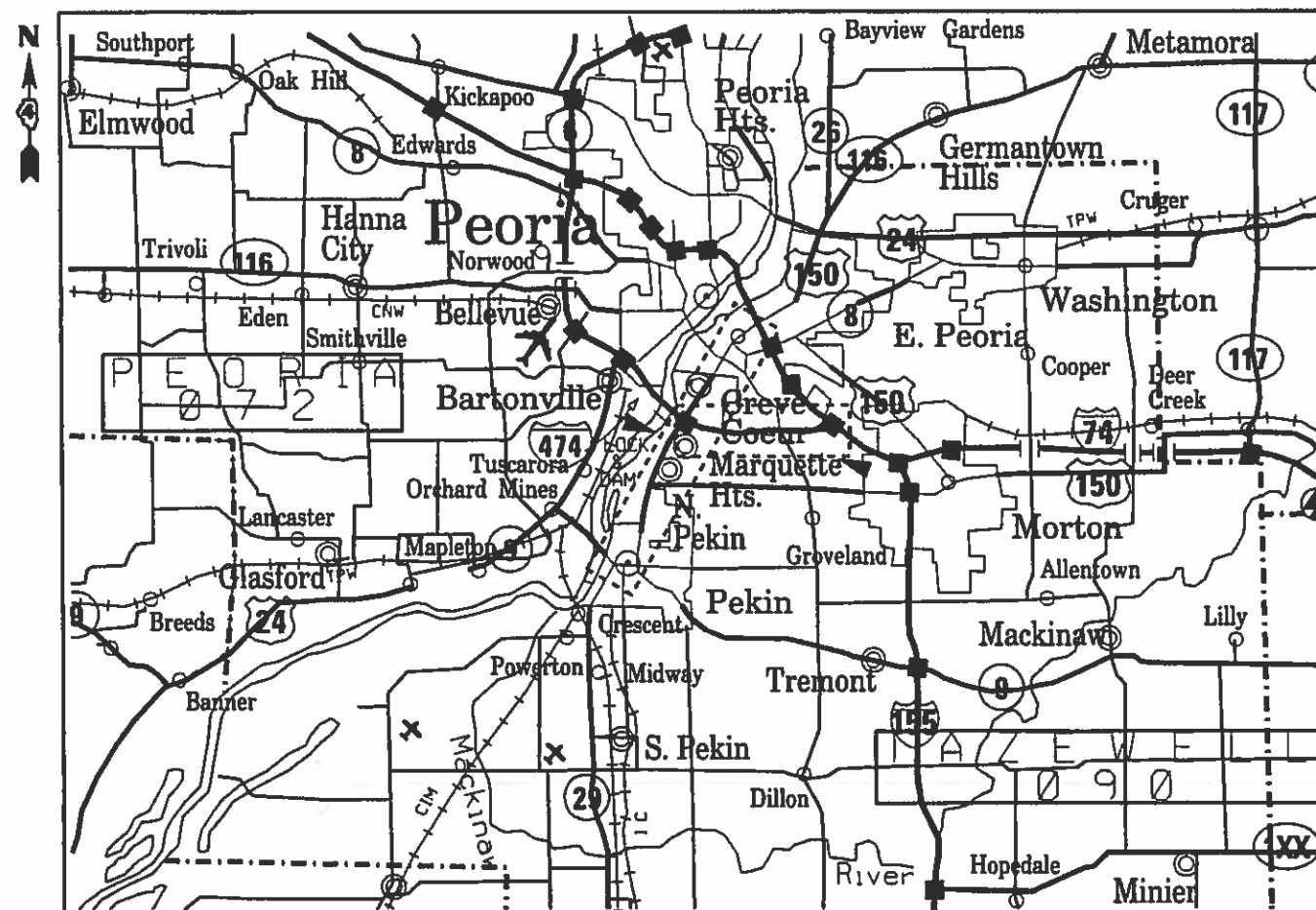
SEE SHEET 2 FOR A LIST OF
APPLICABLE HIGHWAY STANDARDS

PROJECT DESCRIPTION

INSPECTION OF EXISTING HIGH MAST LIGHT
TOWERS; LUMINAIRE REPAIR AND RE-LAMPING;
MAINTENANCE OF EXISTING LIGHTING CONTROLLERS;
LED REPLACEMENT; AND LUMINAIRE REPLACEMENT
IN PEORIA, TAZEVELL, AND WOODFORD AND
MARSHALL COUNTIES

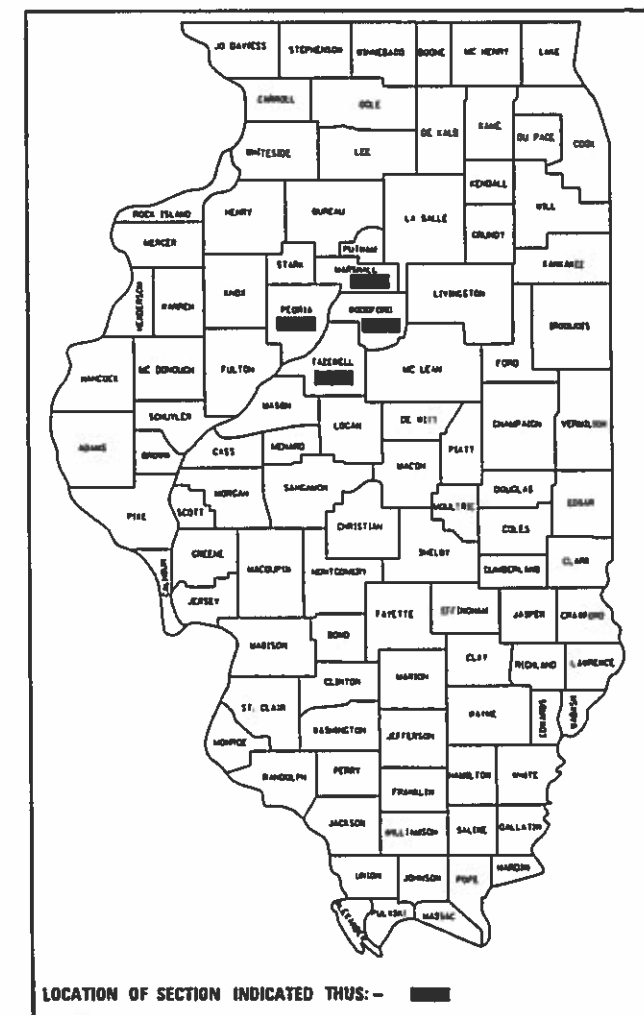
J.U.L.I.E.
JOINT UTILITY LOCATION INFORMATION FOR EXCAVATION
1-800-892-0123
OR 811

PROJECT ENGINEER: ERIC HOWALD (309) 671-4481
PROJECT MANAGER: BEN TELLEFSON (309) 671-4477
CATALOG NO. 35839-00D
CONTRACT NO. 68F17



RTE.	SECTION	COUNTY	TOTAL SHEETS	SHEET NO.
VAR.	D4 ELECTRICAL 2020	VARIOUS	40	1
		ILLINOIS	CONTRACT NO. 68F17	

D-94-006-20



STATE OF ILLINOIS
DEPARTMENT OF TRANSPORTATION
DIVISION OF HIGHWAYS
SUBMITTED Aug 22 2019
Kennel A Barnett RSD
REGION THREE ENGINEER
Oct 4 2019
Paul P. Chif
ENGINEER OF DESIGN AND ENVIRONMENT
DIRECTOR OF HIGHWAYS PROJECT IMPLEMENTATION 3

PRINTED BY THE AUTHORITY
OF THE STATE OF ILLINOIS

COMMITMENTS: THERE ARE NO
COMMITMENTS MADE IN CONJUNCTION
WITH THIS PROJECT.

CONSTRUCTION NOTES	
1.	ANY MAINTENANCE OF EXISTING LIGHTING WILL BE CONSIDERED EXTRA WORK IN ACCORDANCE WITH ARTICLE 109.04 OF THE STANDARD SPECIFICATIONS.
2.	THE LOCATION OF ALL UTILITIES AND PRIVATELY OWNED FACILITIES SHALL BE FIELD VERIFIED BY THE CONTRACTOR PRIOR TO THE INSTALLATION OF ANY COMPONENTS.
3.	THE CONTRACTOR SHALL BE RESPONSIBLE FOR LOCATING EXISTING IDOT ELECTRICAL FACILITIES AT HIS/HER OWN EXPENSE IF REQUIRED. THE CONTRACTOR SHALL ALSO BE LIABLE FOR ANY DAMAGE TO IDOT FACILITIES RESULTING FROM INACCURATE LOCATING.
4.	ELECTRICAL WORK SHALL CONFORM WITH NATIONAL, STATE, AND LOCAL CODES.
5.	ALL SURPLUS MATERIALS SHALL BE DISPOSED OF IN ACCORDANCE WITH ARTICLE 202.03 OF THE STANDARD SPECIFICATIONS.
6.	REMOVAL OF EXISTING ITEMS WILL NOT BE PAID FOR SEPARATELY, BUT SHALL BE INCLUDED IN THE UNIT BID PRICES FOR THE PROPOSED ITEMS.
7.	ALL HPS LAMPS SHALL BE DISPOSED OF AT A CERTIFIED DISPOSAL FACILITY. ALL COSTS, INCLUDING DISPOSAL AND SHIPPING CHARGES, SHALL BE INCLUDED IN THE COST OF THE PROPOSED PAY ITEMS FOR LUMINAIRE LAMP REPLACEMENT. THE CONTRACTOR SHALL SUBMIT SUPPORTING DOCUMENTATION FOR ALL DISPOSAL ACTIVITIES.
8.	THE CONTRACTOR MAY ELECT TO WORK DURING NON-PEAK HOURS AND WEEKENDS, HOWEVER, ALL COSTS ASSOCIATED WITH WORKING DURING THESE TIME PERIODS SHALL BE INCLUDED IN THE BID PRICES FOR THE PAY ITEMS. THERE WILL BE NO ADDITIONAL COMPENSATION FOR SHIFT DIFFERENTIALS AND PREMIUM TIME HOURS.
9.	PRIOR TO COMMENCING WORK, THE CONTRACTOR SHALL ACQUIRE ALL PERTINENT MANUFACTURER'S OPERATION AND MAINTENANCE MANUALS FOR THE TOWER LOWERING DEVICES AND LUMINAIRES. THE CONTRACTOR SHALL BE FAMILIAR AND KNOWLEDGEABLE IN THE MAINTENANCE AND OPERATION OF THE LIGHTING EQUIPMENT.
10.	THE CONTRACTOR SHALL HAVE ALL REQUIRED EQUIPMENT AND SUFFICIENT SUPPLIES OF ALL REQUIRED MATERIALS AVAILABLE AT THE IMMEDIATE WORK SITE TO MINIMIZE WORK OPERATIONS AND TRAFFIC DISRUPTIONS, INCREASE OPERATIONAL EFFICIENCY, AND PREVENT UNNECESSARY LOWERING OF THE LUMINAIRE RING.
11.	THE CONTRACTOR SHALL REMOVE THE EXISTING LIGHT POLES AND DISPOSE OF THEM OFF SITE. THE CONTRACTOR SHALL REFLECT THE SALVAGE COST IN THE UNIT BID PRICE FOR THE PROPOSED LIGHT POLES. THE COST OF THIS WORK SHALL BE INCLUDED IN THE COST OF THE PROPOSED LIGHT POLES.
12.	THE CONTRACTOR SHALL REMOVE ALL EXISTING SIGNS AND APPURTENANCES FROM THE EXISTING LIGHT POLES AND INSTALL THEM ON THE PROPOSED LIGHT POLES USING NEW BRACKETING, HARDWARE, AND BANDING. THE COST OF THIS WORK SHALL BE INCLUDED IN THE COST OF THE PROPOSED LIGHT POLES.
13.	THE CONTRACTOR SHALL PICK UP THE EXISTING LED LUMINAIRES FROM THE IDOT TRAFFIC BUILDING LOCATED AT 1025 W. DETWEILLER DR., PEORIA AND INSTALL THEM ON THE PROPOSED LIGHT POLES. THE COST OF THIS WORK SHALL BE INCLUDED IN THE COST OF THE PROPOSED LIGHT POLES.
14.	THE CONTRACTOR SHALL FURNISH AND INSTALL ALL NEW FUSES, FUSEHOLDERS, SURGE ARRESTORS, AND WIRING INSIDE PROPOSED LIGHT POLES FOR LUMINAIRES. THE COST OF THIS WORK SHALL BE INCLUDED IN THE COST OF THE PROPOSED LIGHT POLES.
15.	THE CONTRACTOR SHALL FURNISH AND INSTALL GALVANIZED STEEL LIGHT POLE PROTECTION SLEEVES ON ALL LIGHT POLES INSTALLED ON THE BRIDGE PARAPETS AS SHOWN IN THE PLANS. THE CONTRACTOR SHALL REMOVE ALL EXISTING GROUT FROM AROUND THE LIGHT POLE BASES AND DISPOSE OF IT OFF SITE. THE COST OF THIS WORK SHALL BE INCLUDED IN THE COST OF THE PROPOSED LIGHT POLES.
16.	THE CONTRACTOR SHALL SCHEDULE ALL WORK ALONG DOWNTOWN I-74 FROM IL 40 (KNOXVILLE AVE.) IN PEORIA COUNTY TO RIVERFRONT DRIVE IN TAZEWELL COUNTY TO UTILIZE THE INTERSTATE LANE CLOSURES AND TRAFFIC CONTROL ASSOCIATED WITH THE RECONSTRCUION OF THE I-74 MURRAY BAKER BRIDGE PROJECT (IDOT CONTRACT NUMBER 68C89). ALL WORK IN THIS SECTION SHALL BE SCHEDULED AND
17.	ONE ATTENUATOR TRUCK FOR EACH WORK CREW WILL BE REQUIRED WHEN WORKING ON THE SHOULDER. THE COST OF THIS WORK SHALL BE INCLUDED IN THE COST OF THE TRAFFIC CONTROL.
18.	THE CONTRACTOR SHALL MAINTAIN TWO OPEN LANES OF TRAFFIC IN EACH DIRECTION ALONG I-74 AT ALL TIMES FOR ALL THREE LANE INTERSTATE SECTIONS..

INDEX OF SHEETS

1. COVER SHEET
2. CONSTRUCTION NOTES
3. SUMMARY OF QUANTITIES
- 4.-7. HIGH MAST TOWER LOCATION LIST
8. LIGHTING CONTROLLER LOCATION LIST
- 9.-27. HIGH MAST TOWER LOCATIONS (PEORIA COUNTY)
- 28.-35. HIGH MAST TOWER LOCATIONS (TAZEWELL COUNTY)
36. HIGH MAST TOWER LOCATIONS (MARSHALL & & WOODFORD COUNTIES)
- 37.-38. MCCLUGGAGE BRIDGE LIGHT POLE REPLACEMENT
39. LIGHT POLE PROTECTION SLEEVE DETAIL
40. TRAFFIC CONTROL (SPECIAL) DETAIL FOR MCCLUGGAGE BRIDGE

HIGHWAY STANDARDS	
STANDARD	APPLICATION
000001-07	STANDARD SYMBOLS, ABBREVIATIONS, AND PATTERNS
001006	DECIMAL OF AN INCH AND OF A FOOT
701001-02	OFF-ROAD OPERATIONS, 2L, 2W, MORE THAN 4.5 M (15') AWAY
701006-05	OFF-ROAD OPERATIONS, 2L, 2W, 4.5 M (15') TO 600 MM (24') FROM PAVEMENT EDGE
701101-05	OFF-ROAD OPERATIONS, MULTILANE, 4.5 M (15') TO 600 MM (24") FROM PAVEMENT EDGE
701106-02	OFF-ROAD OPERATIONS, MULTILANE, MORE THAN 4.5 (15') AWAY
701406-12	LANE CLOSURE, FREEWAY/EXPRESSWAY, DAY OPERATIONS ONLY
701426-09	LANE CLOSURE, MULTILANE, INTERMITTENT OR MOVING OPERATIONS FOR SPEEDS ≤ 40 MPH
701428-01	TRAFFIC CONTROL SETUP AND REMOVAL FREEWAY/EXPRESSWAY
701456-05	PARTIAL EXIT RAMP CLOSURE, FREEWAY / EXPRESSWAY
701601-09	URBAN LANE CLOSURE, MULTILANE, 1W OR 2W WITH NON TRAVERSABLE MEDIAN
701901-08	TRAFFIC CONTROL DEVICES
821101-02	LUMINAIRE WIRING IN POLE
830011-03	LIGHT POLE STEEL MAST ARM
720001-01	SIGN PANEL MOUNTING DETAILS

LEGEND

●

EX. HIGH MAST LIGHT TOWER

—●—

EX. LIGHT POLE

⬮

EX. LIGHTING CONTROLLER

LIGHT TOWER DESIGNATION

6 EFG

L-04

6 - DENOTES NUMBER OF LUMINAIRES ON TOWER

E - DENOTES LIGHTING CONTROLLER

FG - DENOTES LIGHTING CIRCUIT

L-04 - DENOTES LIGHT ON CIRCUIT DIAGRAM

SUMMARY OF QUANTITIES				VARIOUS COUNTIES			
				MARSHALL COUNTY	PEORIA COUNTY	TAZEWELL COUNTY	WOODFORD COUNTY
CODE NUMBER	ITEM DESCRIPTION	UNIT	TOTAL QTY.	CONST. TYPE CODE 0021 100% STATE URBAN	CONST. TYPE CODE 0021 100% STATE URBAN	CONST. TYPE CODE 0021 100% STATE URBAN	CONST. TYPE CODE 0021 100% STATE URBAN
67100100	MOBILIZATION	L SUM	1.0	0.1	0.6	0.2	0.1
82200705	AVIATION OBSTRUCTION WARNING LUMINAIRE, LED	EACH	6.0		6.0		
83060400	LIGHT POLE, GALVANIZED STEEL, 45 FT. M.H., 4 FT. MAST ARM	EACH	14.0		8.0	6.0	
X0326775	INSPECT HIGH MAST LIGHTING TOWER	EACH	179.0	4.0	122.0	42.0	11.0
X0326776	RELAMP HIGH MAST TOWER LUMINAIRE, 400 WATT	EACH	1010.0	16.0	689.0	257.0	48.0
X0326777	REPLACE HIGH MAST LUMINAIRE BALLAST ASSEMBLY, 400 WATT	EACH	65.0	1.0	40.0	18.0	6.0
X0326778	REPLACE HIGH MAST TOWER LOWERING DEVICE MOTOR	EACH	15.0		12.0	3.0	
X0326779	REPLACE HIGH MAST TOWER GEAR BOX ASSEMBLY	EACH	9.0		6.0	3.0	
X0326780	RELAMP UNDERPASS LUMINAIRE, 100 WATT	EACH	262.0		200.0	62.0	
X0326781	REPLACE UNDERPASS LUMINAIRE BALLAST ASSEMBLY, 100 WATT	FOOT	30.0		20.0	10.0	
X0326784	MAINTAIN EXISTING LIGHTING CONTROLLER	EACH	18.0	1.0	10.0	5.0	2.0
X0327375	REPLACE LUMINAIRE BALLAST ASSEMBLY	EACH	10.0		8.0		2.0
X7010216	TRAFFIC CONTROL AND PROTECTION, (SPECIAL)	L SUM	1.0		1.0		
Z0033022	CLEAN AND RELAMP EXISTING LUMINAIRE	EACH	47.0	4.0	34.0		9.0

FILE NAME = D:\common\GEN\Transfer - bureaus\68F17 - Final Plans\68F17 - High Mast Lighting Main.dgn	USER NAME = howalder	DESIGNED -	REVISED -	STATE OF ILLINOIS DEPARTMENT OF TRANSPORTATION	SUMMARY OF QUANTITIES			F.A.P. RTE.	SECTION	COUNTY	TOTAL SHEETS	SHEET NO.
								VAR	D4 ELECTRICAL 2020	VARIOUS	40	3
		CHECKED -	REVISED -		CONTRACT NO. 68B03							
		DATE -	REVISED -		ILLINOIS FED. AID PROJECT							
				SCALE:		STA.		TO STA.				

HIGH MAST TOWER LOCATIONS (PEORIA COUNTY)														
HIGH MAST TOWER								LUMINAIRE						
LOCATION					IDENTIFICATION			QUANTITY	DISTRIB. TYPE	SHIELD SIZE		WATTAGE/ VOLTAGE	INSTALL CONTRACT	
ROADWAY	COUNTY	STATION	OFFSET	HEIGHT (M)	CONT.	CIRCUIT	NUMBER			HOUSE SIDE	STREET SIDE			
I-74	PEORIA	142+238.1	MEDIAN	24	S	AB	5	4	M-C-III	300	300	400W/240V	68197	
I-74	PEORIA	142+388.1	MEDIAN	24	S	AB	4	4	M-C-III	300	300	400W/240V	68200	
I-74	PEORIA	142+487.2	MEDIAN	24	S	AB	3	6	M-C-III	200	200	400W/240V	68200	
I-74	PEORIA	142+586.6	MEDIAN	24	S	AB	2	6	M-C-III	200	200	400W/240V	68197	
I-74	PEORIA	142+690.2	MEDIAN	24	S	AB	1	8	M-C-V	200	200	400W/240V	68197	
I-74	PEORIA	142+792.9	MEDIAN	24	S	CD	2	8	M-C-V	200	200	400W/240V	68197	
I-74	PEORIA	142+902.6	29.4 L	30	S	HI	1	5	M-C-III	200	200	400W/240V	68200	
I-74	PEORIA	142+925.0	19.2 R	30	S	CD	1	5	M-C-II	300	300	400W/240V	68197	
I-74	PEORIA	143+046.2	41.0 R	30	S	JK	1	4	M-C-II	400	N.A.	400W/240V	68197	
I-74	PEORIA	143+067.5	27.0 L	30	S	HI	2	5	M-C-V	200	200	400W/240V	68200	
I-74	PEORIA	143+189.7	25.8 R	30	S	JK	2	4	M-C-II	400	N.A.	400W/240V	68197	
I-74	PEORIA	143+206.0	32.5 L	30	S	HI	3	5	M-C-V	200	200	400W/240V	68200	
I-74	PEORIA	143+290.0	32.0 L	30	S	HI	4	6	M-C-III	200	200	400W/240V	68200	
I-74	PEORIA	143+353.6	24.5 R	30	S	JK	3	4	M-C-II	400	N.A.	400W/240V	68197	
I-74	PEORIA	143+415.0	28.0 L	30	S	HI	5	6	M-C-II	300	300	400W/240V	68200	
I-74	PEORIA	143+420.7	237.7 L	30	J	GH	2	8	M-C-V	200	200	400W/240V	68200	
I-74	PEORIA	143+461.1	106.0 L	30	J	GH	3	8	M-C-II	400	N.A.	400W/240V	68200	
I-74	PEORIA	143+474.4	213.0 L	30	J	EF	4	6	M-C-II	300	300	400W/240V	68200	
I-74	PEORIA	143+504.0	44.0 L	30	J	GH	4	8	M-C-II	400	N.A.	400W/240V	68200	
I-74	PEORIA	143+515.7	26.0 R	30	S	JK	4	4	M-C-II	400	N.A.	400W/240V	68197	
I-74	PEORIA	143+527.2	117.4 L	30	J	EF	5	6	M-C-II	400	N.A.	400W/240V	68200	
I-74	PEORIA	143+581.5	50.0 L	30	W	CD	2	8	M-C-V	200	200	400W/240V	68200	
I-74	PEORIA	143+639.4	65.2 R	30	W	EF	5	4	M-C-II	400	N.A.	400W/240V	68200	
I-74	PEORIA	143+650.0	MEDIAN	24	W	AB	2	8	M-C-III	200	200	400W/240V	68197	
I-74	PEORIA	143+704.0	55.0 L	30	W	CD	1	4	M-C-II	300	300	400W/240V	68200	
I-74	PEORIA	143+741.7	149.2 R	30	W	EF	4	4	M-C-II	400	N.A.	400W/240V	68200	
I-74	PEORIA	143+767.0	MEDIAN	24	W	AB	1	8	M-C-III	200	200	400W/240V	68197	
I-74	PEORIA	143+868.3	218.0 R	30	W	EF	3	4	M-C-II	400	N.A.	400W/240V	68200	
I-74	PEORIA	143+891.0	MEDIAN	24	W	GH	1	8	M-C-III	200	200	400W/240V	68197	
I-74	PEORIA	143+938.6	40.3 R	30	W	EF	1	4	M-C-II	400	N.A.	400W/240V	68200	
I-74	PEORIA	143+989.7	110.6 R	30	W	EF	2	8	M-C-II	400	N.A.	400W/240V	68200	
I-74	PEORIA	144+026.0	MEDIAN	24	W	GH	2	6	M-C-III	200	200	400W/240V	68197	
I-74	PEORIA	144+092.0	63.0 R	30	W	EF	6	4	M-C-II	400	N.A.	400W/240V	68200	
I-74	PEORIA	144+152.7	MEDIAN	24	W	GH	3	6	M-C-III	200	200	400W/240V	68197	
I-74	PEORIA	144+282.7	MEDIAN	24	W	GH	4	6	M-C-III	200	200	400W/240V	68197	
I-74	PEORIA	144+424.1	MEDIAN	24	F	GH	3	6	M-C-III	200	200	400W/240V	68197	
I-74	PEORIA	144+582.0	MEDIAN	24	F	GH	2	6	M-C-III	400	400	400W/240V	68197	
I-74	PEORIA	144+731.6	MEDIAN	24	F	GH	1	6	M-C-III	300	300	400W/240V	68197	
I-74	PEORIA	144+849.3	MEDIAN	24	F	AB	4	6	M-C-III	300	300	400W/240V	68197	
I-74	PEORIA	144+991.2	MEDIAN	24	F	AB	3	5	M-C-III	300	300	400W/240V	68197	
I-74	PEORIA	145+050.0	38.0 R	30	F	AB	2	3	M-C-III	400	400	400W/240V	68197	

FILE NAME =	USER NAME = howald	DESIGNED -	REVISED -	STATE OF ILLINOIS DEPARTMENT OF TRANSPORTATION	LIGHT TOWER AND LUMINAIRE INFORMATION (PEORIA COUNTY)				F.A.P. RTE.	SECTION	COUNTY	TOTAL SHEETS	SHEET NO.
D:\common\GEN\Transfer - bureaus\68F17 - Final Plans\68F17 - High Mast Lighting Main.dgn	DRAWN -	REVISED -	REVISED -		SCALE:		STA.	TO STA.	VAR	D4 ELECTRICAL 2020	VARIOUS	40	4
	CHECKED -	REVISED -			CONTRACT NO. 68F17								
PLOT DATE = 8/23/2019	DATE -	REVISED -			ILLINOIS FED. AID PROJECT								

HIGH MAST TOWER LOCATIONS (PEORIA COUNTY)														
HIGH MAST TOWER								LUMINAIRE						
LOCATION					IDENTIFICATION			QUANTITY	DISTRIB. TYPE	SHIELD SIZE		WATTAGE/ VOLTAGE	INSTALL CONTRACT	
ROADWAY	COUNTY	STATION	OFFSET	HEIGHT (M)	CONT.	CIRCUIT	NUMBER			HOUSE SIDE	STREET SIDE			
I-74	PEORIA	145+121.2	MEDIAN	24	G	AB	4	5	M-C-III	200	200	400W/240V	68197	
I-74	PEORIA	145+144.6	30.0 R	30	F	AB	1	3	M-C-III	400	400	400W/240V	68197	
I-74	PEORIA	145+238.7	MEDIAN	24	G	AB	3	8	M-C-III	200	200	400W/240V	68197	
I-74	PEORIA	145+295.8	69.8 R	30	F	CD	1	8	M-C-V	200	200	400W/240V	68197	
I-74	PEORIA	145+299.2	62.6 L	30	G	AB	2	3	M-C-III	400	400	400W/240V	68197	
I-74	PEORIA	145+376.2	92.3 L	30	G	AB	1	8	M-C-III	200	200	400W/240V	68197	
I-74	PEORIA	145+385.2	MEDIAN	24	F	CD	3	6	M-C-III	200	200	400W/240V	68197	
I-74	PEORIA	145+400.3	38.3 R	30	F	CD	2	3	M-C-II	400	400	400W/240V	68197	
I-74	PEORIA	145+524.8	MEDIAN	24	F	CD	4	6	M-C-III	200	200	400W/240V	68197	
I-74	PEORIA	145+554.2	66.6 L	30	G	CD	1	5	M-C-II	400	N.A.	400W/240V	68200	
I-74	PEORIA	145+666.3	MEDIAN	24	F	CD	5	6	M-C-III	400	400	400W/240V	68197	
I-74	PEORIA	145+715.2	57.6 L	30	G	CD	2	5	M-C-II	400	N.A.	400W/240V	68200	
I-74	PEORIA	145+805.6	MEDIAN	24	G	CD	3	8	M-C-V	300	300	400W/240V	68197	
I-74	PEORIA	145+935.6	MEDIAN	24	G	CD	4	5	M-C-III	300	300	400W/240V	68197	
I-74	PEORIA	146+066.7	MEDIAN	24	G	EF	1	5	M-C-III	300	300	400W/240V	68197	
I-74	PEORIA	146+206.0	MEDIAN	24	G	EF	2	6	M-C-II	400	400	400W/240V	68197	
I-74	PEORIA	146+346.0	MEDIAN	24	G	EF	3	6	M-C-II	400	400	400W/240V	68197	
I-74	PEORIA	146+489.5	MEDIAN	24	F	AB	4	8	M-C-II	400	400	400W/240V	68198	
I-74	PEORIA	146+652.0	MEDIAN	24	F	AB	3	6	M-C-II	400	400	400W/240V	68198	
I-74	PEORIA	146+793.0	MEDIAN	24	F	AB	2	6	M-C-III	200	200	400W/240V	68198	
I-74	PEORIA	146+931.0	MEDIAN	24	F	AB	1	6	M-C-III	200	200	400W/240V	68198	
I-74	PEORIA	146+974.3	34.8 R	24	F	GH	2	3	M-C-II	300	300	400W/240V	68198	
I-74	PEORIA	147+059.2	72.0 L	24	N	AB	5	3	M-C-II	200	200	400W/240V	68198	
I-74	PEORIA	147+062.0	MEDIAN	24	F	GH	3	8	M-C-V	200	200	400W/240V	68198	
I-74	PEORIA	147+102.4	71.4 R	30	F	GH	1	4	M-C-III	300	300	400W/240V	68198	
I-74	PEORIA	147+149.0	60.8 L	30	N	AB	4	8	M-C-III	200	200	400W/240V	68198	
I-74	PEORIA	147+174.0	114.4 R	30	F	CD	1	4	M-C-III	200	200	400W/240V	68198	
I-74	PEORIA	147+198.5	32.3 R	24	F	CD	2	8	M-C-III	200	200	400W/240V	68198	
I-74	PEORIA	147+275.3	50.1 L	24	N	AB	3	8	M-C-III	200	200	400W/240V	68198	
I-74	PEORIA	147+277.0	56.2 R	30	F	IJ	1	8	M-C-III	200	200	400W/240V	68198	
I-74	PEORIA	147+38.0	128.0 L	30	N	AB	2	6	M-C-III	200	200	400W/240V	68198	
I-74	PEORIA	147+382.8	45.6 R	24	F	IJ	2	3	M-C-III	200	200	400W/240V	68198	
I-74	PEORIA	147+383.4	60.0 L	24	N	AB	1	8	M-C-III	200	200	400W/240V	68198	
I-74	PEORIA	147+498.0	36.7 R	24	F	IJ	3	3	M-C-III	200	200	400W/240V	68198	
I-74	PEORIA	147+534.0	50.0 L	24	N	CD	1	3	M-C-II	200	200	400W/240V	68198	
I-74	PEORIA	147+607.5	46.0 L	24	N	EF	1	3	M-C-II	200	200	400W/240V	68198	
I-74	PEORIA	147+614.2	33.3 R	24	F	IJ	4	3	M-C-II	200	200	400W/240V	68198	
I-74	PEORIA	147+762.0	46.8 L	24	N	CD	2	3	M-C-II	200	200	400W/240V	68198	
I-74	PEORIA	147+768.0	32.5 R	24	F	IJ	5	3	M-C-II	200	200	400W/240V	68198	
I-74	PEORIA	147+906.0	WB MEDIAN	24	N	EF	2	8	M-C-III	200	200	400W/240V	68198	
I-74	PEORIA	148+007.7	WB MEDIAN	24	N	CD	3	6	M-C-V	200	200	400W/240V	68198	

FILE NAME =	USER NAME = howard	DESIGNED -	REVISED -	STATE OF ILLINOIS DEPARTMENT OF TRANSPORTATION	LIGHT TOWER AND LUMINAIRE INFORMATION (PEORIA COUNTY) CONTINUED	F.A.P. RTE.	SECTION	COUNTY	TOTAL SHEETS	SHEET NO.	
0:\common\GEN\Transfer - bureaus\68F17	Final Plans\68F17 - High Mast Lighting Main	DRAWN	REVISED -			VAR	D4 ELECTRICAL 2020	VARIOUS	40	5	
	PLOT SCALE = 164.7568 ' / in.	CHECKED -	REVISED -			CONTRACT NO. 68F17					
	PLOT DATE = 8/23/2019	DATE -	REVISED -			ILLINOIS FED. AID PROJECT					

HIGH MAST TOWER LOCATIONS (PEORIA COUNTY)													
HIGH MAST TOWER								LUMINAIRE					
LOCATION					IDENTIFICATION			QUANTITY	DISTRIB. TYPE	SHIELD SIZE		WATTAGE/ VOLTAGE	INSTALL CONTRACT
ROADWAY	COUNTY	STATION	OFFSET	HEIGHT (M)	CONT.	CIRCUIT	NUMBER			HOUSE SIDE	STREET SIDE		
I-74	PEORIA	148+131.1	MEDIAN	24	N	EF	3	6	M-C-III	200	200	400W/240V	68198
I-74	PEORIA	148+245.0	MEDIAN	24	N	CD	4	6	M-C-V	200	200	400W/240V	68198
I-74	PEORIA	148+374.6	MEDIAN	24	E	CD	4	6	M-C-V	200	200	400W/240V	68198
I-74	PEORIA	148+489.8	MEDIAN	24	E	CD	3	6	M-C-V	300	300	400W/240V	68198
I-74	PEORIA	148+605.5	MEDIAN	24	E	CD	2	6	M-C-V	300	300	400W/240V	68198
I-74	PEORIA	148+723.5	MEDIAN	24	E	CD	1	6	M-C-V	300	300	400W/240V	68198
I-74	PEORIA	148+801.3	63.3 L	24	E	FG	1	6	M-C-V	300	300	400W/240V	68198
I-74	PEORIA	148+838.0	MEDIAN	24	E	FG	3	8	M-C-V	300	300	400W/240V	68198
I-74	PEORIA	148+915.1	47.6 L	24	E	FG	2	6	M-C-II	300	300	400W/240V	68198
I-74	PEORIA	149+005.4	MEDIAN	24	E	FG	4	6	M-C-II	300	300	400W/240V	68198
I-74	PEORIA	149+145.7	MEDIAN	24	G	AB	4	6	M-C-II	300	300	400W/240V	68198
I-74	PEORIA	149+292.9	MEDIAN	24	G	AB	3	6	M-C-II	300	300	400W/240V	68198
I-74	PEORIA	149+398.5	MEDIAN	24	G	AB	2	6	M-C-V	200	200	400W/240V	68198
I-74	PEORIA	149+504.6	MEDIAN	24	G	AB	1	6	M-C-V	200	200	400W/240V	68198
I-74	PEORIA	149+612.0	MEDIAN	24	G	CD	1	6	M-C-V	200	200	400W/240V	68198
I-74	PEORIA	149+732.0	MEDIAN	24	G	CD	2	8	M-C-II	400	400	400W/240V	68198
I-74	PEORIA	149+866.5	MEDIAN	24	G	CD	3	8	M-C-II	300	300	400W/240V	68196
I-74	PEORIA	150+006.5	MEDIAN	24	A	BC	1	8	M-C-II	300	300	400W/240V	68196
I-74	PEORIA	150+130.0	44.0 R	24	A	DE	2	4	M-C-II	300	300	400W/240V	68196
I-74	PEORIA	150+152.0	MEDIAN	24	A	FG	1	8	M-C-II	300	300	400W/240V	68196
I-74	PEORIA	150+199.0	39.0 R	24	A	DE	1	5	M-C-II	300	300	400W/240V	68196
I-74	PEORIA	150+251.0	MEDIAN	24	A	FG	2	6	M-C-V	300	300	400W/240V	68196
I-74	PEORIA	150+296.0	50.0 L	24	A	HI	1	4	M-C-II	300	300	400W/240V	68196
I-74	PEORIA	150+297.0	31.0 R	24	A	DE	3	5	M-C-III	300	300	400W/240V	68196
I-74	PEORIA	150+342.0	MEDIAN	24	A	FG	3	6	M-C-V	300	300	400W/240V	68196
I-74	PEORIA	150+412.0	26.0 L	24	A	HI	2	4	M-C-II	300	300	400W/240V	68196
I-74	PEORIA	150+439.0	15.0 R	24	A	HI	3	4	M-C-II	300	300	400W/240V	68196
WAR DR.	PEORIA	39+716.0	35.0 L	24	J	CD	4	8	M-C-II	400	N.A.	400W/240V	68200
WAR DR.	PEORIA	39+807.0	31.0 R	24	J	CD	5	4	M-C-V	200	200	400W/240V	68200
WAR DR.	PEORIA	39+864.0	107.0 L	24	J	CD	2	6	M-C-III	200	200	400W/240V	68200
WAR DR.	PEORIA	39+898.0	26.0 L	24	J	AB	1	6	M-C-II	200	200	400W/240V	68200
WAR DR.	PEORIA	39+953.0	166.0 L	24	J	CD	3	4	M-C-III	200	200	400W/240V	68200
WAR DR.	PEORIA	40+000.0	27.0 R	24	J	AB	2	4	M-C-III	200	200	400W/240V	68200
WAR DR.	PEORIA	40+012.0	72.0 L	30	J	CD	1	4	M-C-II	300	300	400W/240V	68200
WAR DR.	PEORIA	40+123.0	23.0 L	24	J	EF	1	4	M-C-III	200	200	400W/240V	68200
WAR DR.	PEORIA	40+145.0	53.0 R	24	J	AB	3	4	M-C-III	200	200	400W/240V	68200
WAR DR.	PEORIA	40+208.0	24.0 R	24	J	GH	1	6	M-C-III	200	200	400W/240V	68200
WAR DR.	PEORIA	40+266.0	23.0 L	24	J	EF	2	4	M-C-V	200	200	400W/240V	68200
WAR DR.	PEORIA	40+276.0	27.0 R	24	J	EF	3	6	M-C-III	200	200	400W/240V	68200

HIGH MAST TOWER LOCATIONS (TAZEWELL COUNTY)													
HIGH MAST TOWER								LUMINAIRE					
LOCATION					IDENTIFICATION			QUANTITY	DISTRIB. TYPE	SHIELD SIZE		WATTAGE/ VOLTAGE	INSTALL CONTRACT
ROADWAY	COUNTY	STATION	OFFSET	HEIGHT (M)	CONT.	CIRCUIT	NUMBER			HOUSE SIDE	STREET SIDE		
RAMP I-3	TAZEWELL	10+082.5	16.0 R	30	I	CD	2	6	M-C-III	N.A.	N.A.	400W/240V	68195
RAMP I-3	TAZEWELL	10+236.8	14.0 R	30	I	CD	3	4	M-C-III	N.A.	N.A.	400W/240V	68195
RAMP H-1	TAZEWELL	10+455.0	12.5 R	30	I	AB	2	8	M-C-V	N.A.	N.A.	400W/240V	68195
RAMP H-4	TAZEWELL	10+540.82	12.5 L	30	R	CD	3	3	M-C-II	400	N.A.	400W/240V	68195
RAMP H-1	TAZEWELL	10+558.5	10.4 R	30	I	AB	1	8	M-C-V	N.A.	N.A.	400W/240V	68195
RAMP H-1	TAZEWELL	10+678.0	42.4 L	30	I	CD	1	8	M-C-V	N.A.	N.A.	400W/240V	68195
RAMP H-4	TAZEWELL	10+680.4	12.4 L	30	R	CD	2	3	M-C-II	400	N.A.	400W/240V	68195
I-74	TAZEWELL	142+388.1	28.0 L	30	J	AB	2	6	M-C-V	N.A	N.A	400W/240V	68201
I-74	TAZEWELL	142+487.2	38.4 L	30	J	AB	1	6	M-C-II	200	200	400W/240V	68201
I-74	TAZEWELL	142+902.6	26.6 L	30	J	CD	1	8	M-C-II	200	200	400W/240V	68201
I-74	TAZEWELL	143+067.5	46.0 L	30	J	EF	1	5	M-C-II	200	200	400W/240V	68201
I-74	TAZEWELL	143+206.0	27.4 L	30	J	EF	2	4	M-C-V	N.A	N.A	400W/240V	68201
I-74	TAZEWELL	143+290.0	27.0 L	30	J	EF	3	4	M-C-III	N.A	N.A	400W/240V	68201
I-74	TAZEWELL	143+415.0	102.7 L	30	W	AB	3	5	M-C-V	N.A	N.A	400W/240V	68201
I-74	TAZEWELL	143+581.5	108.0 L	30	W	AB	4	6	M-C-V	N.A	N.A	400W/240V	68201
I-74	TAZEWELL	143+704.0	86.5 L	30	W	AB	5	5	M-C-II	400	N.A	400W/240V	68201
I-74	TAZEWELL	151+415.3	16.0 L	30	R	EF	7	7	M-C-III	400	N.A.	400W/240V	68195
I-74	TAZEWELL	151+571.3	23.0 R	30	R	EF	6	7	M-C-III	400	N.A.	400W/240V	68195
I-74	TAZEWELL	151+746.0	25.3 R	30	R	EF	1	8	M-C-V	N.A.	N.A.	400W/240V	68195
I-74	TAZEWELL	151+826.6	1.50 L	24	R	CD	1	8	M-C-V	N.A.	N.A.	400W/240V	68195
I-74	TAZEWELL	151+835.5	67.5 R	30	R	GH	1	6	M-C-V	N.A.	N.A.	400W/240V	68195
I-74	TAZEWELL	151+971.0	2.00 L	24	R	AB	1	8	M-C-V	N.A.	N.A.	400W/240V	68195
I-74	TAZEWELL	152+119.0	2.50 L	24	R	AB	2	6	M-C-II	200	200	400W/240V	68195
I-74	TAZEWELL	152+264.7	3.00 L	24	R	AB	3	6	M-C-II	200	200	400W/240V	68195
I-74	TAZEWELL	152+424.0	3.50 L	24	R	AB	4	6	M-C-II	200	200	400W/240V	68195
I-74	TAZEWELL	152+594.9	MEDIAN	24	M	AB	4	6	M-C-II	200	200	400W/240V	68199
I-74	TAZEWELL	152+747.0	MEDIAN	24	M	AB	3	8	M-C-III	200	200	400W/240V	68199
I-74	TAZEWELL	152+864.0	26.0 R	30	M	AB	2	6	M-C-III	200	200	400W/240V	68199
I-74	TAZEWELL	152+995.0	34.6 R	30	M	AB	1	8	M-C-III	200	200	400W/240V	68199
I-74	TAZEWELL	153+154.0	17.5 R	30	M	CD	1	8	M-C-II	200	200	400W/240V	68199
I-74	TAZEWELL	153+328.7	27.8 R	30	M	CD	2	6	M-C-III	200	200	400W/240V	68199
I-74	TAZEWELL	153+471.7	36.6 R	36	M	CD	3	6	M-C-III	200	200	400W/240V	68199
I-74	TAZEWELL	153+782.0	MEDIAN	24	W	AB	2	8	M-C-II	400	400	400W/240V	68199
I-74	TAZEWELL	153+919.0	MEDIAN	24	W	AB	1	6	M-C-III	N.A.	N.A.	400W/240V	68199
I-74	TAZEWELL	153+938.8	85.7 R	30	W	EF	1	5	M-C-III	N.A.	N.A.	400W/240V	68199
I-74	TAZEWELL	154+045.8	MEDIAN	24	W	CD	1	6	M-C-V	N.A.	N.A.	400W/240V	68199
I-74	TAZEWELL	154+053.0	106.4 R	30	W	EF	2	6	M-C-V	N.A.	N.A.	400W/240V	68199
I-74	TAZEWELL	154+165.4	MEDIAN	24	W	CD	2	4	M-C-II	400	400	400W/240V	68199
I-74	TAZEWELL	154+196.4	71.4 R	30	W	EF	3	5	M-C-II	N.A.	N.A.	400W/240V	68199
I-74	TAZEWELL	154+295.5	MEDIAN	24	W	CD	3	6	M-C-II	400	400	400W/240V	EXISTING
I-74	TAZEWELL	154+450.0	MEDIAN	24	W	CD	4	6	M-C-II	400	400	400W/240V	68199
I-74	TAZEWELL	154+609.4	MEDIAN	24	W	CD	5	6	M-C-II	400	400	400W/240V	68199

LIGHTING CONTROLLER LOCATIONS			
ROADWAY	COUNTY	LOCATION	CONTROLLER
			ID
I-74 WB	PEORIA	STERLING AVE. EXIT	S
I-74 WB	PEORIA	US 150 (WAR MEMORIAL DR.) EXIT	W
US 150 WB	PEORIA	BETWEEN BRANDYWINE AND SCENIC	J
I-74 EB	PEORIA	GALE AVE.	F
I-74 WB	PEORIA	GALE AVE.	G
I-74 EB	PEORIA	UNIVERSITY ST.	F
I-74 WB	PEORIA	UNIVERSITY ST.	N
I-74 WB	PEORIA	PENNSYLVANIA	E
I-74 WB	PEORIA	GREENLEAF	B
I-74 WB	PEORIA	IL 29 (ADAMS)	A
I-74 EB	TAZEWELL	RIVERFRONT DR.	R
CAMP ST.	TAZEWELL	RIVERFRONT DR.	I
I-74 EB	TAZEWELL	IL 116 (MAIN ST.)	M
I-74 WB	TAZEWELL	IL 116 (MAIN ST.)	J
I-74 EB	TAZEWELL	WASHINGTON	W
I-39	WOODFORD	MINONK RD.	
I-39	WOODFORD	IL 116 (MAIN ST.)	
I-39	MARSHALL	IL 17	



SCHEDULE OF QUANTITIES (SHEET 10)		
ITEM DESCRIPTION	UNIT	QTY.
INSPECT HIGH MAST LIGHTING TOWER	EACH	5.0
RELAMP HIGH MAST TOWER LUMINAIRE, 400 WATT	EACH	28.0

FILE NAME =	USER NAME = howalder	DESIGNED -	REVISED -
D:\common\GEN\Transfer - bureaus\68F17	- Final Plans\68F17 - High Mast Lighting Main	DRAWN (Final 8-22-19).dgn	REVISED -
	PLOT SCALE = 164.7568 ' / in.	CHECKED -	REVISED -
	PLOT DATE = 8/23/2019	DATE -	REVISED -

STATE OF ILLINOIS DEPARTMENT OF TRANSPORTATION	

LIGHT TOWER INSPECTION AND MAINTENANCE I-74 AT STERLING AVE.		
SCALE:	SHEET NO. 1 OF 62 SHEETS	STA. TO STA.

F.A.P. RTE.	SECTION	COUNTY	TOTAL SHEETS	SHEET NO.
VAR	D4 ELECTRICAL 2020	VARIOUS	40	9
		CONTRACT NO. 68F17		
ILLINOIS		FED. AID PROJECT		



SCHEDULE OF QUANTITIES (SHEET 11)		
ITEM DESCRIPTION	UNIT	QTY.
INSPECT HIGH MAST LIGHTING TOWER	EACH	9.0
RELAMP HIGH MAST TOWER LUMINAIRE, 400 WATT	EACH	46.0
RELAMP UNDERPASS LUMINAIRE, 100 WATT	EACH	10.0
MAINTAIN EXISTING LIGHTING CONTROLLER	EACH	1.0

FILE NAME =	USER NAME = howalder	DESIGNED -	REVISED -
D:\common\GEN\Transfer - bureaus\68F17	- Final Plans\68F17 - High Mast Lighting Main	DRAWN (Final 8-22-19).dgn	REVISED -
	PLOT SCALE = 1/4" = 164.7568' / 1" in.	CHECKED -	REVISED -
	PLOT DATE = 8/23/2019	DATE -	REVISED -

STATE OF ILLINOIS
DEPARTMENT OF TRANSPORTATION

LIGHT TOWER INSPECTION AND MAINTENANCE
I-74 AT STERLING AVE. (CONTINUED)

SCALE: SHEET NO. 2 OF 62 SHEETS STA. TO STA.

F.A.P. RTE.	SECTION	COUNTY	TOTAL SHEETS	SHEET NO.
VAR	D4 ELECTRICAL 2020	VARIOUS	40	10
CONTRACT NO. 68F17				
ILLINOIS FED. AID PROJECT				



SCHEDULE OF QUANTITIES (SHEET 12)		
ITEM DESCRIPTION	UNIT	QTY.
INSPECT HIGH MAST LIGHTING TOWER	EACH	12.0
RELAMP HIGH MAST TOWER LUMINAIRE, 400 WATT	EACH	76.0
RELAMP UNDERPASS LUMINAIRE, 100 WATT	EACH	17.0
MAINTAIN EXISTING LIGHTING CONTROLLER	EACH	1.0



SCHEDULE OF QUANTITIES (SHEET 13)		
ITEM DESCRIPTION	UNIT	QTY.
INSPECT HIGH MAST LIGHTING TOWER	EACH	9.0
RELAMP HIGH MAST TOWER LUMINAIRE, 400 WATT	EACH	46.0
RELAMP UNDERPASS LUMINAIRE, 100 WATT	EACH	12.0
MAINTAIN EXISTING LIGHTING CONTROLLER	EACH	1.0

FILE NAME =	USER NAME = howalder	DESIGNED -	REVISED -
D:\common\GEN\Transfer - bureaus\68F17	- Final Plans\68F17 - High Mast Lighting Main	DRAWN (Final 8-22-19).dgn	REVISED -
	PLOT SCALE = 1/4" = 164.7568' / 1" in.	CHECKED -	REVISED -
	PLOT DATE = 8/23/2019	DATE -	REVISED -

STATE OF ILLINOIS	
DEPARTMENT OF TRANSPORTATION	

LIGHT TOWER INSPECTION AND MAINTENANCE		
WAR MEMORIAL DR. AT I-74 RAMPS		
SCALE:	SHEET NO. 4 OF 62 SHEETS	STA. TO STA.

F.A.P. RTE.	SECTION	COUNTY	TOTAL SHEETS	SHEET NO.
VAR	D4 ELECTRICAL 2020	VARIOUS	40	12
CONTRACT NO. 68F17				
ILLINOIS FED. AID PROJECT				



SCHEDULE OF QUANTITIES (SHEET 14)		
ITEM DESCRIPTION	UNIT	QTY.
INSPECT HIGH MAST LIGHTING TOWER	EACH	5.0
RELAMP HIGH MAST TOWER LUMINAIRE, 400 WATT	EACH	28.0

FILE NAME =	USER NAME = howalder	DESIGNED -	REVISED -
D:\common\GEN\Transfer - bureaus\68F17	- Final Plans\68F17 - High Mast Lighting Main.dgn	DRAWN (Final 8-22-19)	REVISED -
	PLOT SCALE = 1/4" = 164.7568' / 1" in.	CHECKED -	REVISED -
	PLOT DATE = 8/23/2019	DATE -	REVISED -

STATE OF ILLINOIS
DEPARTMENT OF TRANSPORTATION

LIGHT TOWER INSPECTION AND MAINTENANCE
WAR MEMORIAL DR. AT I-74 RAMPS (CONTINUED)

SCALE: SHEET NO. 5 OF 62 SHEETS STA. TO STA.

F.A.P. RTE.	SECTION	COUNTY	TOTAL SHEETS	SHEET NO.
VAR	D4 ELECTRICAL 2020	VARIOUS	40	13
CONTRACT NO. 68F17				
ILLINOIS FED. AID PROJECT				



SCHEDULE OF QUANTITIES (SHEET 15)		
ITEM DESCRIPTION	UNIT	QTY.
INSPECT HIGH MAST LIGHTING TOWER	EACH	7.0
RELAMP HIGH MAST TOWER LUMINAIRE, 400 WATT	EACH	38.0

FILE NAME =	USER NAME = howalder	DESIGNED -	REVISED -
D:\common\GEN\Transfer - bureaus\68F17	- Final Plans\68F17 - High Mast Lighting Main	DRAWN (Final 8-22-19).dgn	REVISED -
	PLOT SCALE = 164.7568 ' / in.	CHECKED -	REVISED -
	PLOT DATE = 8/23/2019	DATE -	REVISED -

STATE OF ILLINOIS
DEPARTMENT OF TRANSPORTATION

LIGHT TOWER INSPECTION AND MAINTENANCE
I-74 AT WAR MEMORIAL DRIVE

SCALE: SHEET NO. 6 OF 62 SHEETS STA. TO STA.

F.A.P. RTE.	SECTION	COUNTY	TOTAL SHEETS	SHEET NO.
VAR	D4 ELECTRICAL 2020	VARIOUS	40	14
CONTRACT NO. 68F17				
ILLINOIS FED. AID PROJECT				



SCHEDULE OF QUANTITIES (SHEET 16)		
ITEM DESCRIPTION	UNIT	QTY.
INSPECT HIGH MAST LIGHTING TOWER	EACH	3.0
RELAMP HIGH MAST TOWER LUMINAIRE, 400 WATT	EACH	18.0
RELAMP UNDERPASS LUMINAIRE, 100 WATT	EACH	12.0

FILE NAME =	USER NAME = howalder	DESIGNED -	REVISED -
D:\common\GEN\Transfer - bureaus\68F17	- Final Plans\68F17 - High Mast Lighting Main	DRAWN (Final 8-22-19).dgn	REVISED -
	PLOT SCALE = 164.7568 ' / in.	CHECKED -	REVISED -
	PLOT DATE = 8/23/2019	DATE -	REVISED -

STATE OF ILLINOIS
DEPARTMENT OF TRANSPORTATION

LIGHT TOWER INSPECTION AND MAINTENANCE
I-74 AT FORREST HILL

SCALE: SHEET NO. 7 OF 62 SHEETS STA. TO STA.

F.A.P. RTE.	SECTION	COUNTY	TOTAL SHEETS	SHEET NO.
VAR	D4 ELECTRICAL 2020	VARIOUS	40	15
CONTRACT NO. 68F17				
ILLINOIS FED. AID PROJECT				



SCHEDULE OF QUANTITIES (SHEET 17)		
ITEM DESCRIPTION	UNIT	QTY.
INSPECT HIGH MAST LIGHTING TOWER	EACH	6.0
RELAMP HIGH MAST TOWER LUMINAIRE, 400 WATT	EACH	30.0
MAINTAIN EXISTING LIGHTING CONTROLLER	EACH	1.0

FILE NAME = D:\common\GEN\Transfer - bureaus\68F17	USER NAME = howalder	DESIGNED -	REVISED -	STATE OF ILLINOIS DEPARTMENT OF TRANSPORTATION	LIGHT TOWER INSPECTION AND MAINTENANCE I-74 AT GALE AVE.			F.A.P. RTE.	SECTION	COUNTY	TOTAL SHEETS	SHEET NO.
	- Final Plans\68F17 - High Mast Lighting Main.dgn	DRAWN (Final 8-22-19)	REVISED -					VAR	D4 ELECTRICAL 2020	VARIOUS	40	16
	PLOT SCALE = 1/4" = 164.7568' / 1" in.	CHECKED -	REVISED -					CONTRACT NO. 68F17				
	PLOT DATE = 8/23/2019	DATE -	REVISED -					ILLINOIS FED. AID PROJECT				
SCALE:		SHEET NO. 8 OF 62 SHEETS		STA.		TO STA.						



SCHEDULE OF QUANTITIES (SHEET 18)		
ITEM DESCRIPTION	UNIT	QTY.
INSPECT HIGH MAST LIGHTING TOWER	EACH	8.0
RELAMP HIGH MAST TOWER LUMINAIRE, 400 WATT	EACH	45.0
RELAMP UNDERPASS LUMINAIRE, 100 WATT	EACH	12.0
MAINTAIN EXISTING LIGHTING CONTROLLER	EACH	1.0

FILE NAME =	USER NAME = howalder	DESIGNED -	REVISED -
D:\common\GEN\Transfer - bureaus\68F17	- Final Plans\68F17 - High Mast Lighting Main	DRAWN (Final 8-22-19).dgn	REVISED -
	PLOT SCALE = 164.7568 ' / in.	CHECKED -	REVISED -
	PLOT DATE = 8/23/2019	DATE -	REVISED -

STATE OF ILLINOIS
DEPARTMENT OF TRANSPORTATION

LIGHT TOWER INSPECTION AND MAINTENANCE
I-74 AT GALE AVE. (CONTINUED)

SCALE: SHEET NO. 9 OF 62 SHEETS STA. TO STA.

F.A.P. RTE.	SECTION	COUNTY	TOTAL SHEETS	SHEET NO.
VAR	D4 ELECTRICAL 2020	VARIOUS	40	17
CONTRACT NO. 68F17				
ILLINOIS FED. AID PROJECT				



SCHEDULE OF QUANTITIES (SHEET 19)		
ITEM DESCRIPTION	UNIT	QTY.
INSPECT HIGH MAST LIGHTING TOWER	EACH	4.0
RELAMP HIGH MAST TOWER LUMINAIRE, 400 WATT	EACH	23.0



SCHEDULE OF QUANTITIES (SHEET 20)		
ITEM DESCRIPTION	UNIT	QTY.
INSPECT HIGH MAST LIGHTING TOWER	EACH	3.0
RELAMP HIGH MAST TOWER LUMINAIRE, 400 WATT	EACH	20.0
RELAMP UNDERPASS LUMINAIRE, 100 WATT	EACH	8.0

FILE NAME =	USER NAME = howald	DESIGNED -	REVISED -
D:\common\GEN\Transfer - bureaus\68F17	- Final Plans\68F17 - High Mast Lighting Main	DRAWN (Final 8-22-19).dgn	REVISED -
	PLOT SCALE = 164.7568 ' / in.	CHECKED -	REVISED -
	PLOT DATE = 8/23/2019	DATE -	REVISED -

STATE OF ILLINOIS
DEPARTMENT OF TRANSPORTATION

LIGHT TOWER INSPECTION AND MAINTENANCE
I-74 AT NEBRASKA

SCALE: SHEET NO. 11 OF 62 SHEETS STA. TO STA.

F.A.P. RTE.	SECTION	COUNTY	TOTAL SHEETS	SHEET NO.
VAR	D4 ELECTRICAL 2020	VARIOUS	40	19
CONTRACT NO. 68F17				
ILLINOIS FED. AID PROJECT				



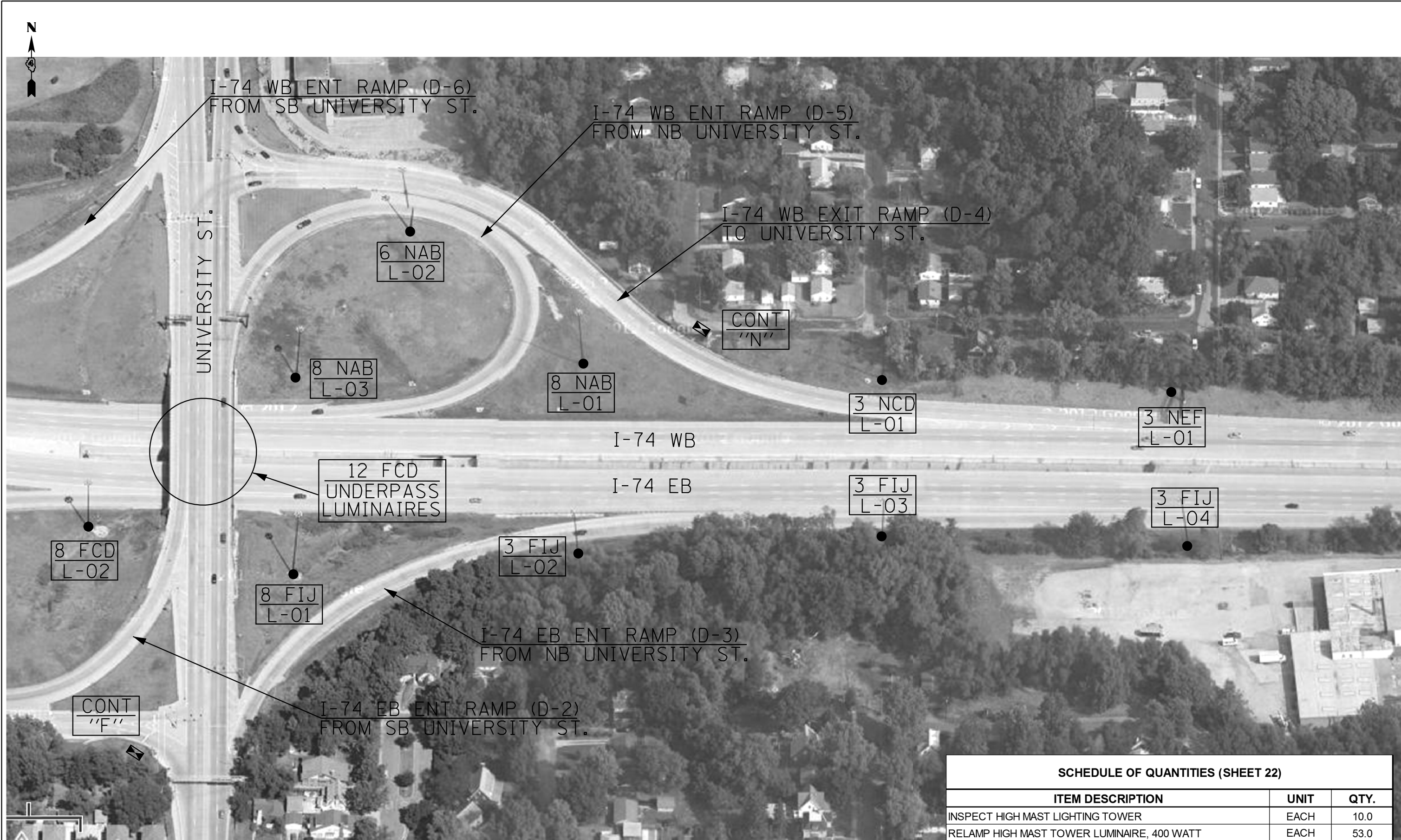
SCHEDULE OF QUANTITIES (SHEET 21)		
ITEM DESCRIPTION	UNIT	QTY.
INSPECT HIGH MAST LIGHTING TOWER	EACH	9.0
RELAMP HIGH MAST TOWER LUMINAIRE, 400 WATT	EACH	48.0

FILE NAME =	USER NAME = howald	DESIGNED -	REVISED -
D:\common\GEN\Transfer - bureaus\68F17	- Final Plans\68F17 - High Mast Lighting Main	DRAWN (Final 8-22-19).dgn	REVISED -
	PLOT SCALE = 164.7568' / 1" =	CHECKED -	REVISED -
	PLOT DATE = 8/23/2019	DATE -	REVISED -

STATE OF ILLINOIS DEPARTMENT OF TRANSPORTATION	

LIGHT TOWER INSPECTION AND MAINTENANCE I-74 AT UNIVERSITY			
SCALE:	SHEET NO. 12 OF 62 SHEETS	STA.	TO STA.

F.A.P. RTE.	SECTION	COUNTY	TOTAL SHEETS	SHEET NO.
VAR	D4 ELECTRICAL 2020	VARIOUS	40	20
CONTRACT NO. 68F17				
ILLINOIS FED. AID PROJECT				



SCHEDULE OF QUANTITIES (SHEET 22)		
ITEM DESCRIPTION	UNIT	QTY.
INSPECT HIGH MAST LIGHTING TOWER	EACH	10.0
RELAMP HIGH MAST TOWER LUMINAIRE, 400 WATT	EACH	53.0
RELAMP UNDERPASS LUMINAIRE, 100 WATT	EACH	12.0
MAINTAIN EXISTING LIGHTING CONTROLLER	EACH	2.0



SCHEDULE OF QUANTITIES (SHEET 23)		
ITEM DESCRIPTION	UNIT	QTY.
INSPECT HIGH MAST LIGHTING TOWER	EACH	5.0
RELAMP HIGH MAST TOWER LUMINAIRE, 400 WATT	EACH	26.0
RELAMP UNDERPASS LUMINAIRE, 100 WATT	EACH	24.0

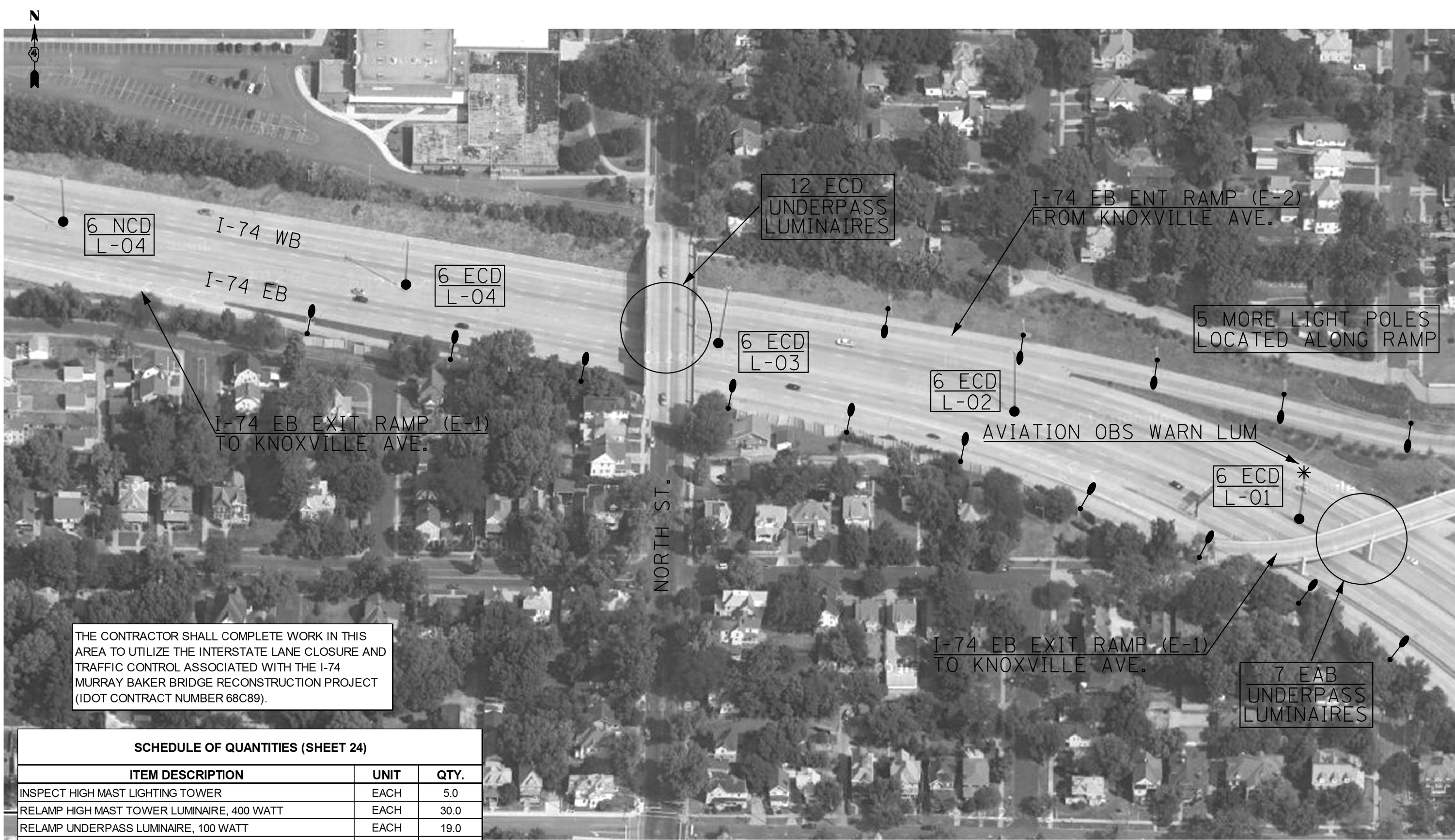
FILE NAME =	USER NAME = howalder	DESIGNED -	REVISED -
D:\common\GEN\Transfer - bureaus\68F17	- Final Plans\68F17 - High Mast Lighting Main	DRAWN (Final 8-22-19).dgn	REVISED -
	PLOT SCALE = 164.7568 ' / in.	CHECKED -	REVISED -
	PLOT DATE = 8/23/2019	DATE -	REVISED -

STATE OF ILLINOIS
DEPARTMENT OF TRANSPORTATION

LIGHT TOWER INSPECTION AND MAINTENANCE
I-74 AT BROADWAY, SHERIDAN, AND ELLIS

SCALE: SHEET NO. 14 OF 62 SHEETS STA. TO STA.

F.A.P. RTE.	SECTION	COUNTY	TOTAL SHEETS	SHEET NO.
VAR	D4 ELECTRICAL 2020	VARIOUS	40	22
CONTRACT NO. 68F17				
ILLINOIS FED. AID PROJECT				



THE CONTRACTOR SHALL COMPLETE WORK IN THIS AREA TO UTILIZE THE INTERSTATE LANE CLOSURE AND TRAFFIC CONTROL ASSOCIATED WITH THE I-74 MURRAY BAKER BRIDGE RECONSTRUCTION PROJECT (IDOT CONTRACT NUMBER 68C89).

SCHEDULE OF QUANTITIES (SHEET 24)		
ITEM DESCRIPTION	UNIT	QTY.
INSPECT HIGH MAST LIGHTING TOWER	EACH	5.0
RELAMP HIGH MAST TOWER LUMINAIRE, 400 WATT	EACH	30.0
RELAMP UNDERPASS LUMINAIRE, 100 WATT	EACH	19.0
AVIATION OBSTRUCTION WARNING LUMINAIRE	EACH	1.0
CLEAN AND RELAMP EXISTING LUMINAIRE	EACH	20.0



THE CONTRACTOR SHALL COMPLETE WORK IN THIS AREA TO UTILIZE THE INTERSTATE LANE CLOSURE AND TRAFFIC CONTROL ASSOCIATED WITH THE I-74 MURRAY BAKER BRIDGE RECONSTRUCTION PROJECT (IDOT CONTRACT NUMBER 68C89).

SCHEDULE OF QUANTITIES (SHEET 25)		
ITEM DESCRIPTION	UNIT	QTY.
INSPECT HIGH MAST LIGHTING TOWER	EACH	5.0
RELAMP HIGH MAST TOWER LUMINAIRE, 400 WATT	EACH	32.0
RELAMP UNDERPASS LUMINAIRE, 100 WATT	EACH	10.0
AVIATION OBSTRUCTION WARNING LUMINAIRE	EACH	4.0
MAINTAIN EXISTING LIGHTING CONTROLLER	EACH	1.0
RELAMP TUNNEL LUMINAIRE	EACH	335.0
CLEAN AND RELAMP EXISTING LUMINAIRE	EACH	11.0

FILE NAME =	USER NAME = howalder	DESIGNED -	REVISED -
D:\common\GEN\Transfer - bureaus\68F17	- Final Plans\68F17 - High Mast Lighting Main	DRAWN (Final 8-22-19).dgn	REVISED -
	PLOT SCALE = 1/4" = 164.7568' / 1" in.	CHECKED -	REVISED -
	PLOT DATE = 8/23/2019	DATE -	REVISED -

STATE OF ILLINOIS
DEPARTMENT OF TRANSPORTATION

LIGHT TOWER INSPECTION AND MAINTENANCE
I-74 AT IL 40 (KNOXVILLE)

SCALE: TO STA.

F.A.P. RTE.	SECTION	COUNTY	TOTAL SHEETS	SHEET NO.
VAR	D4 ELECTRICAL 2020	VARIOUS	40	24
ILLINOIS FED. AID PROJECT				CONTRACT NO. 68F17



THE CONTRACTOR SHALL COMPLETE WORK IN THIS AREA TO UTILIZE THE INTERSTATE LANE CLOSURE AND TRAFFIC CONTROL ASSOCIATED WITH THE I-74 MURRAY BAKER BRIDGE RECONSTRUCTION PROJECT (IDOT CONTRACT NUMBER 68C89).

SCHEDULE OF QUANTITIES (SHEET 26)		
ITEM DESCRIPTION	UNIT	QTY.
INSPECT HIGH MAST LIGHTING TOWER	EACH	4.0
RELAMP HIGH MAST TOWER LUMINAIRE, 400 WATT	EACH	24.0
RELAMP UNDERPASS LUMINAIRE, 100 WATT	EACH	18.0
AVIATION OBSTRUCTION WARNING LUMINAIRE	EACH	1.0
MAINTAIN EXISTING LIGHTING CONTROLLER	EACH	1.0
CLEAN AND RELAMP EXISTING LUMINAIRE	EACH	3.0

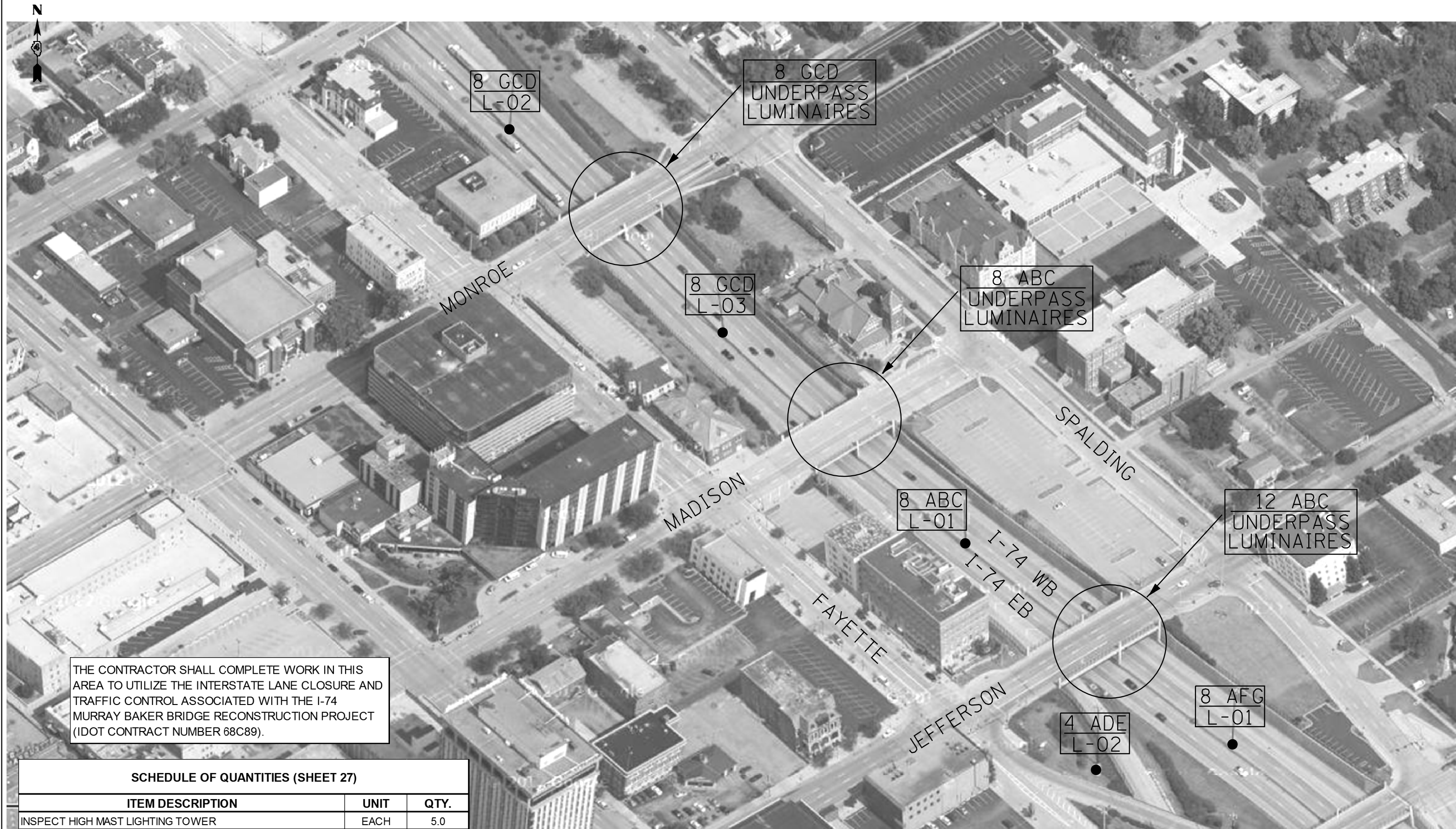
FILE NAME =	USER NAME = howalder	DESIGNED -	REVISED -
D:\common\GEN\Transfer - bureaus\68F17	- Final Plans\68F17 - High Mast Lighting Main	DRAWN (Final 8-22-19).dgn	REVISED -
	PLOT SCALE = 1/4" = 164.7568' / 1" in.	CHECKED -	REVISED -
	PLOT DATE = 8/23/2019	DATE -	REVISED -

STATE OF ILLINOIS
DEPARTMENT OF TRANSPORTATION

LIGHT TOWER INSPECTION AND MAINTENANCE
I-74 AT GLEN OAK AND PERRY

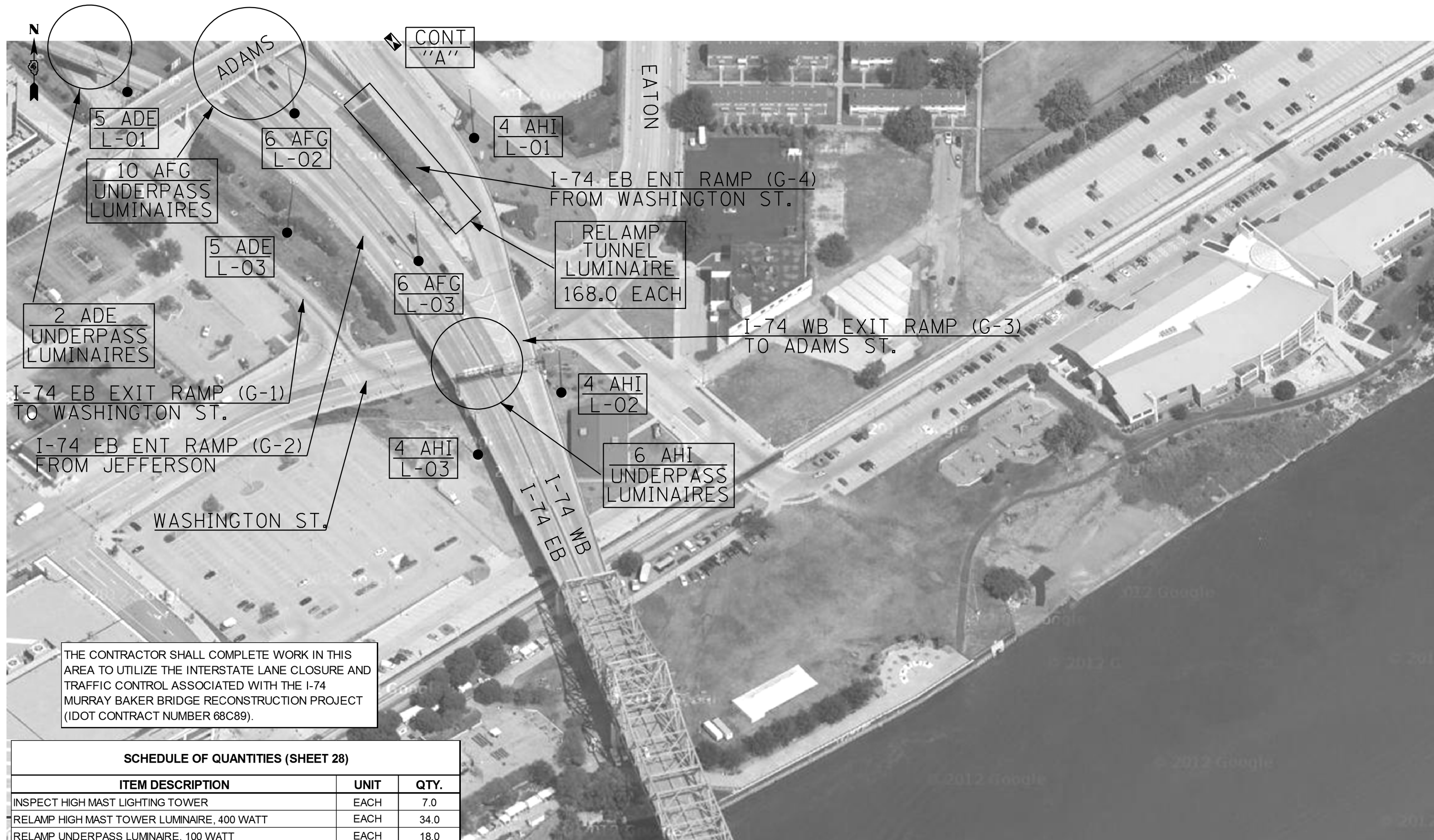
SCALE: TO STA.

F.A.P. RTE.	SECTION	COUNTY	TOTAL SHEETS	SHEET NO.
VAR	D4 ELECTRICAL 2020	VARIOUS	40	25
CONTRACT NO. 68F17				
ILLINOIS FED. AID PROJECT				



THE CONTRACTOR SHALL COMPLETE WORK IN THIS AREA TO UTILIZE THE INTERSTATE LANE CLOSURE AND TRAFFIC CONTROL ASSOCIATED WITH THE I-74 MURRAY BAKER BRIDGE RECONSTRUCTION PROJECT (IDOT CONTRACT NUMBER 68C89).

SCHEDULE OF QUANTITIES (SHEET 27)		
ITEM DESCRIPTION	UNIT	QTY.
INSPECT HIGH MAST LIGHTING TOWER	EACH	5.0
RELAMP HIGH MAST TOWER LUMINAIRE, 400 WATT	EACH	36.0
RELAMP UNDERPASS LUMINAIRE, 100 WATT	EACH	28.0

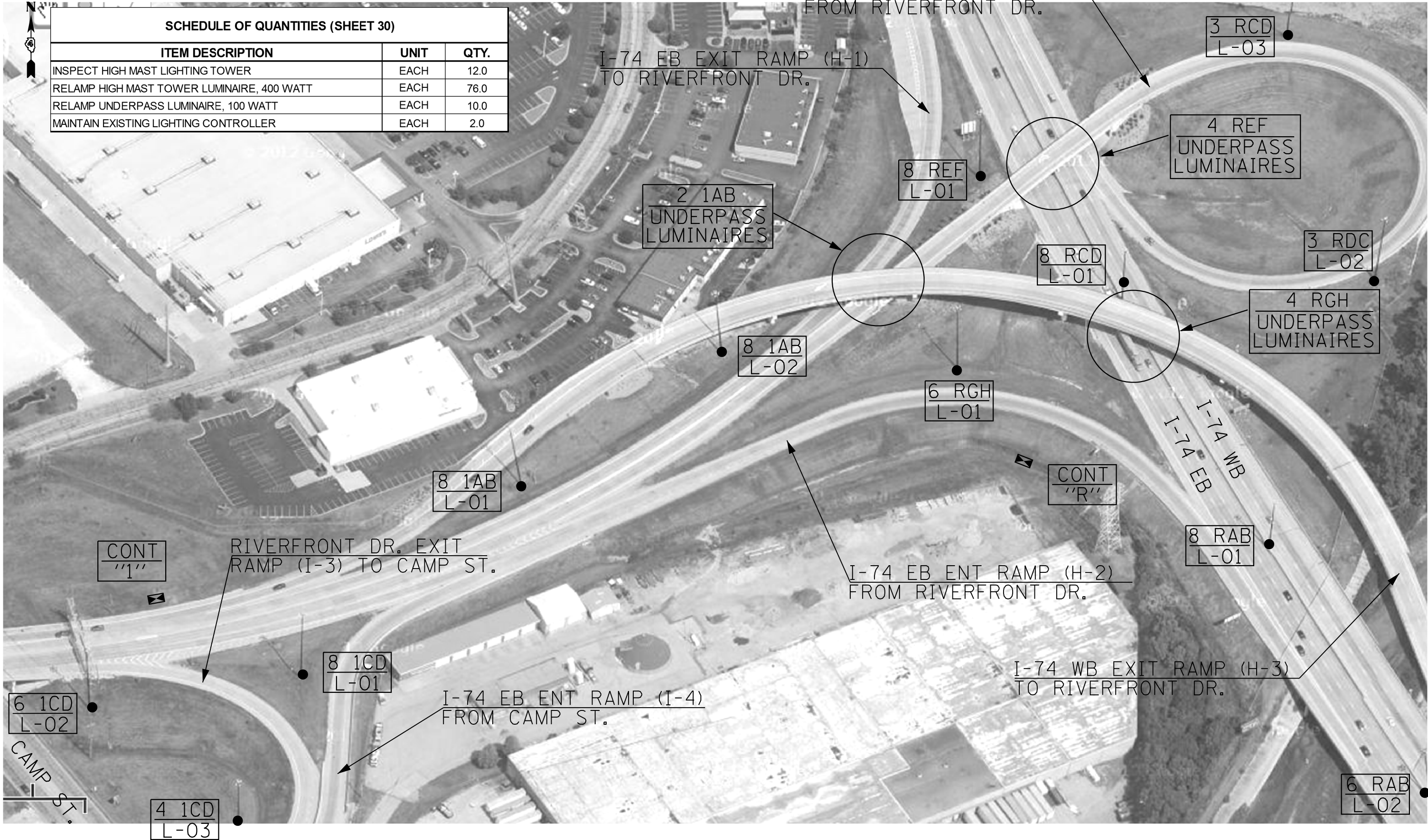


SCHEDULE OF QUANTITIES (SHEET 28)		
ITEM DESCRIPTION	UNIT	QTY.
INSPECT HIGH MAST LIGHTING TOWER	EACH	7.0
RELAMP HIGH MAST TOWER LUMINAIRE, 400 WATT	EACH	34.0
RELAMP UNDERPASS LUMINAIRE, 100 WATT	EACH	18.0
MAINTAIN EXISTING LIGHTING CONTROLLER	EACH	1.0
RELAMP TUNNEL LUMINAIRE	EACH	168.0



SCHEDULE OF QUANTITIES (SHEET 29)		
ITEM DESCRIPTION	UNIT	QTY.
INSPECT HIGH MAST LIGHTING TOWER	EACH	2.0
RELAMP HIGH MAST TOWER LUMINAIRE, 400 WATT	EACH	14.0

FILE NAME =	USER NAME = howlder	DESIGNED -	REVISED -	<div>STATE OF ILLINOIS</div> <div>DEPARTMENT OF TRANSPORTATION</div>	LIGHT TOWER INSPECTION AND MAINTENANCE				F.A.P. RTE.	SECTION	COUNTY	TOTAL SHEETS	SHEET NO.
0:\common\GEN\Transfer - bureau\68F17	- Final Plans\68F17 - High Mast Lighting Main\DRAWN (Final-6-22-19).dgn	REVISION	REVISION		I-74 AT				VAR	D4 ELECTRICAL 2020	VARIOUS	40	28
	PLOT SCALE = 164.7568 ' / in.	CHECKED -	REVISED -		CONTRACT NO. 68F17								
	PLOT DATE = 8/23/2019	DATE -	REVISED -										
					SCALE:		STA.	TO STA.	ILLINOIS FED. AID PROJECT				



SCHEDULE OF QUANTITIES (SHEET 30)		
ITEM DESCRIPTION	UNIT	QTY.
INSPECT HIGH MAST LIGHTING TOWER	EACH	12.0
RELAMP HIGH MAST TOWER LUMINAIRE, 400 WATT	EACH	76.0
RELAMP UNDERPASS LUMINAIRE, 100 WATT	EACH	10.0
MAINTAIN EXISTING LIGHTING CONTROLLER	EACH	2.0



SCHEDULE OF QUANTITIES (SHEET 31)		
ITEM DESCRIPTION	UNIT	QTY.
INSPECT HIGH MAST LIGHTING TOWER	EACH	3.0
RELAMP HIGH MAST TOWER LUMINAIRE, 400 WATT	EACH	18.0

FILE NAME =	USER NAME = howalder	DESIGNED -	REVISED -	STATE OF ILLINOIS DEPARTMENT OF TRANSPORTATION	LIGHT TOWER INSPECTION AND MAINTENANCE I-74 AT		F.A.P. RTE.	SECTION	COUNTY	TOTAL SHEETS	SHEET NO.	
D:\common\GEN\Transfer - bureaus\68F17	- Final Plans\68F17 - High Mast Lighting Main.dgn	DRAWN (Final 8-22-19)	REVISED -				VAR	D4 ELECTRICAL 2020	VARIOUS	40	30	
	PLOT SCALE = 164.7568 ' / in.	CHECKED -	REVISED -				CONTRACT NO. 68F17					
	PLOT DATE = 8/23/2019	DATE -	REVISED -				ILLINOIS FED. AID PROJECT					
SCALE:		STA.										



SCHEDULE OF QUANTITIES (SHEET 32)		
ITEM DESCRIPTION	UNIT	QTY.
INSPECT HIGH MAST LIGHTING TOWER	EACH	5.0
RELAMP HIGH MAST TOWER LUMINAIRE, 400 WATT	EACH	34.0
RELAMP UNDERPASS LUMINAIRE, 100 WATT	EACH	24.0
MAINTAIN EXISTING LIGHTING CONTROLLER	EACH	1.0

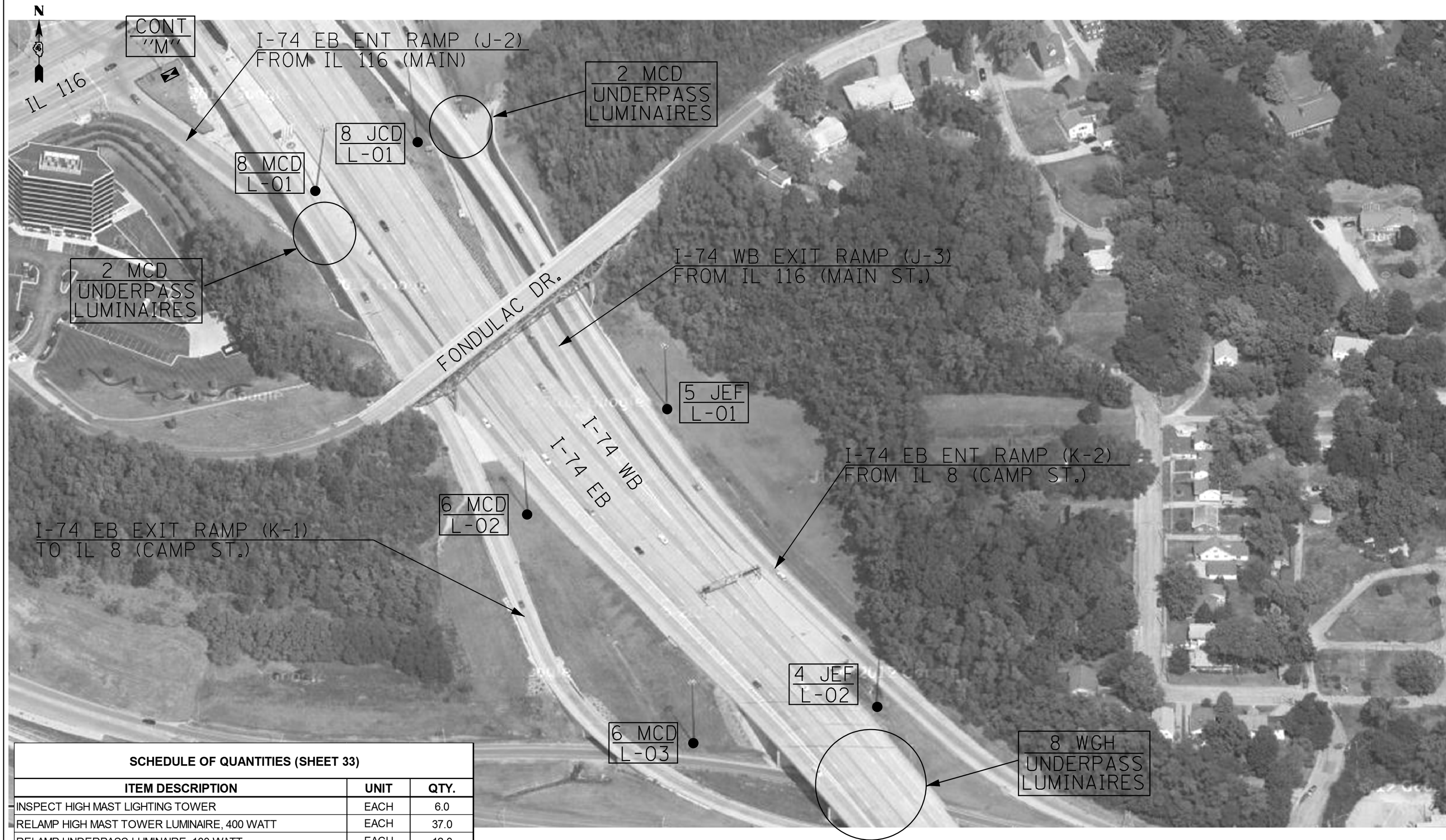
FILE NAME =	USER NAME = howalder	DESIGNED -	REVISED -
D:\common\GEN\Transfer - bureaus\68F17	- Final Plans\68F17 - High Mast Lighting Main	DRAWN (Final 8-22-19).dgn	REVISED -
	PLOT SCALE = 164.7568 ' / in.	CHECKED -	REVISED -
	PLOT DATE = 8/23/2019	DATE -	REVISED -

STATE OF ILLINOIS
DEPARTMENT OF TRANSPORTATION

LIGHT TOWER INSPECTION AND MAINTENANCE
I-74 AT

SCALE: TO STA.

F.A.P. RTE.	SECTION	COUNTY	TOTAL SHEETS	SHEET NO.
VAR	D4 ELECTRICAL 2020	VARIOUS	40	31
CONTRACT NO. 68F17				
ILLINOIS FED. AID PROJECT				



SCHEDULE OF QUANTITIES (SHEET 33)		
ITEM DESCRIPTION	UNIT	QTY.
INSPECT HIGH MAST LIGHTING TOWER	EACH	6.0
RELAMP HIGH MAST TOWER LUMINAIRE, 400 WATT	EACH	37.0
RELAMP UNDERPASS LUMINAIRE, 100 WATT	EACH	12.0
MAINTAIN EXISTING LIGHTING CONTROLLER	EACH	1.0

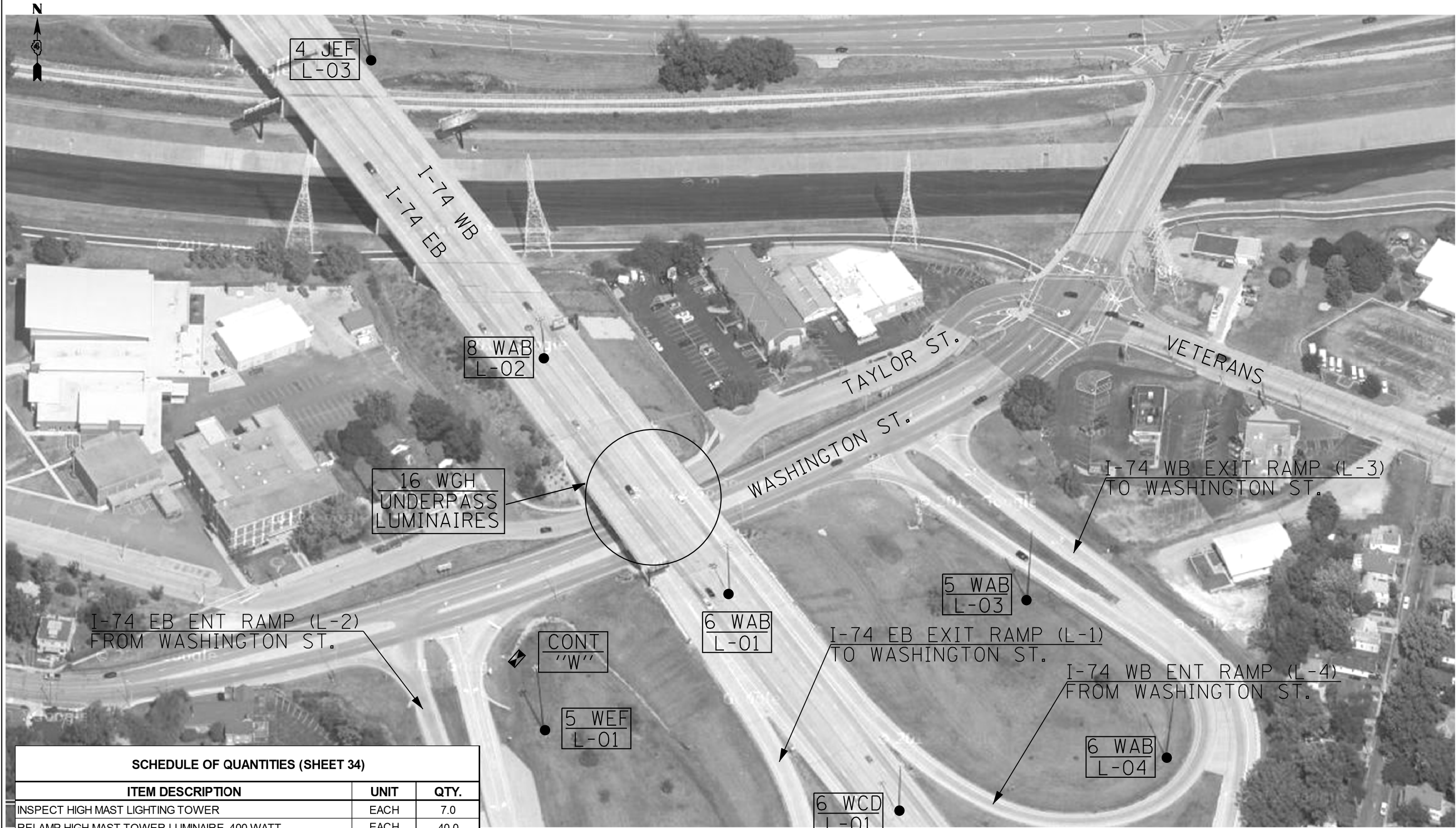
FILE NAME =	USER NAME = howalder	DESIGNED -	REVISED -
D:\common\GEN\Transfer - bureaus\68F17	- Final Plans\68F17 - High Mast Lighting Main	DRAWN (Final 8-22-19).dgn	REVISED -
	PLOT SCALE = 164.7568 ' / in.	CHECKED -	REVISED -
	PLOT DATE = 8/23/2019	DATE -	REVISED -

STATE OF ILLINOIS
DEPARTMENT OF TRANSPORTATION

LIGHT TOWER INSPECTION AND MAINTENANCE
I-74 AT

SCALE: TO STA.

F.A.P. RTE.	SECTION	COUNTY	TOTAL SHEETS	SHEET NO.
VAR	D4 ELECTRICAL 2020	VARIOUS	40	32
CONTRACT NO. 68F17				
ILLINOIS FED. AID PROJECT				



SCHEDULE OF QUANTITIES (SHEET 34)		
ITEM DESCRIPTION	UNIT	QTY.
INSPECT HIGH MAST LIGHTING TOWER	EACH	7.0
RELAMP HIGH MAST TOWER LUMINAIRE, 400 WATT	EACH	40.0
RELAMP UNDERPASS LUMINAIRE, 100 WATT	EACH	16.0
MAINTAIN EXISTING LIGHTING CONTROLLER	EACH	1.0

FILE NAME =	USER NAME = howalder	DESIGNED -	REVISED -
D:\common\GEN\Transfer - bureaus\68F17	- Final Plans\68F17 - High Mast Lighting Main	DRWN (Final 8-22-19).dgn	REVISED -
	PLOT SCALE = 1/4" = 164.7568' / 1" in.	CHECKED -	REVISED -
	PLOT DATE = 8/23/2019	DATE -	REVISED -

STATE OF ILLINOIS
DEPARTMENT OF TRANSPORTATION

LIGHT TOWER INSPECTION AND MAINTENANCE
I-74 AT

SCALE: TO STA.

F.A.P. RTE.	SECTION	COUNTY	TOTAL SHEETS	SHEET NO.
VAR	D4 ELECTRICAL 2020	VARIOUS	40	33
CONTRACT NO. 68F17				
ILLINOIS FED. AID PROJECT				



SCHEDULE OF QUANTITIES (SHEET 35)		
ITEM DESCRIPTION	UNIT	QTY.
INSPECT HIGH MAST LIGHTING TOWER	EACH	6.0
RELAMP HIGH MAST TOWER LUMINAIRE, 400 WATT	EACH	32.0



FILE NAME =	USER NAME = howelder	DESIGNED -	REVISED -
D:\common\GEN\Transfer - bureaus\68F17	- Final Plans\68F17 - High Mast Lighting Mainse	DRAWN (Final 8-22-19).dgn	REVISED -
	PLOT SCALE = 164.7568 ' / in.	CHECKED -	REVISED -
	PLOT DATE = 8/23/2019	DATE -	REVISED -

LIGHT TOWER INSPECTION AND MAINTENANCE

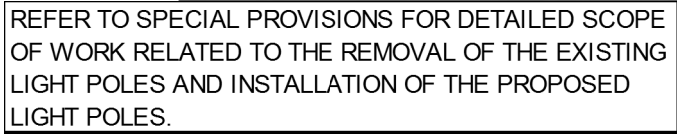
I-74 AT

SCALE:		STA.	TO STA.
--------	--	------	---------



MARSHALL AND WOODFORD COUNTY HIGH MAST TOWER LOCATIONS							
HIGH MAST TOWER LOCATIONS				HIGH MAST LUMINAIRE		MAINTAIN EX. LIGHTING CONTROLLER	CLEAN AND RELAMP EX LUMINAIRE (45' POLES)
				QUANTITY	WATTAGE/ VOLTAGE		
ROADWAY	COUNTY	LOCATION	HEIGHT (FT)				
I-39	MARSHALL	IL 17 INTERCHANGE	80	4	400W/240V	1	4
I-39	MARSHALL	IL 17 INTERCHANGE	80	4	400W/240V		
I-39	MARSHALL	IL 17 INTERCHANGE	80	4	400W/240V		
I-39	MARSHALL	IL 17 INTERCHANGE	80	4	400W/240V		
I-39	WOODFORD	IL 116 INTERCHANGE	80	4	400W/240V	1	5
I-39	WOODFORD	IL 116 INTERCHANGE	80	4	400W/240V		
I-39	WOODFORD	IL 116 INTERCHANGE	80	4	400W/240V		
I-39	WOODFORD	IL 116 INTERCHANGE	80	4	400W/240V		
I-39	WOODFORD	MINONK INTERCHANGE	80	4	400W/240V	1	4
I-39	WOODFORD	MINONK INTERCHANGE	80	4	400W/240V		
I-39	WOODFORD	MINONK INTERCHANGE	80	4	400W/240V		
I-39	WOODFORD	MINONK INTERCHANGE	80	4	400W/240V		
I-74	WOODFORD	EB MACKINAW DELLS REST AREA	80	4	400W/240V		
I-74	WOODFORD	EB MACKINAW DELLS REST AREA	80	4	400W/240V		
I-74	WOODFORD	WB MACKINAW DELLS REST AREA	80	8	400W/240V		

SCHEDULE OF QUANTITIES (SHEET 28)		
ITEM DESCRIPTION	UNIT	QTY.
INSPECT HIGH MAST LIGHTING TOWER	EACH	15.0
RELAMP HIGH MAST TOWER LUMINAIRE, 400 WATT	EACH	64.0
REPLACE HIGH MAST LUMINAIRE BALLAST ASSEMBLY, 400 WATT **	EACH	7.0
MAINTAIN EXISTING LIGHTING CONTROLLER	EACH	3.0
REPLACE LUMINAIRE BALLAST ASSEMBLY		2.0
CLEAN AND RELAMP EXISTING LUMINAIRE	EACH	13.0
** HIGH MAST LUMINAIRE LOCATIONS WILL VARY DEPENDING ON SERVICE NEEDS		



SCHEDULE OF QUANTITIES (SHEET 37)		
ITEM DESCRIPTION	UNIT	QTY.
LIGHT POLE, GALVANIZED STEEL, 45 FT. M.H., 4 FT. MAST ARM	EACH	9.0

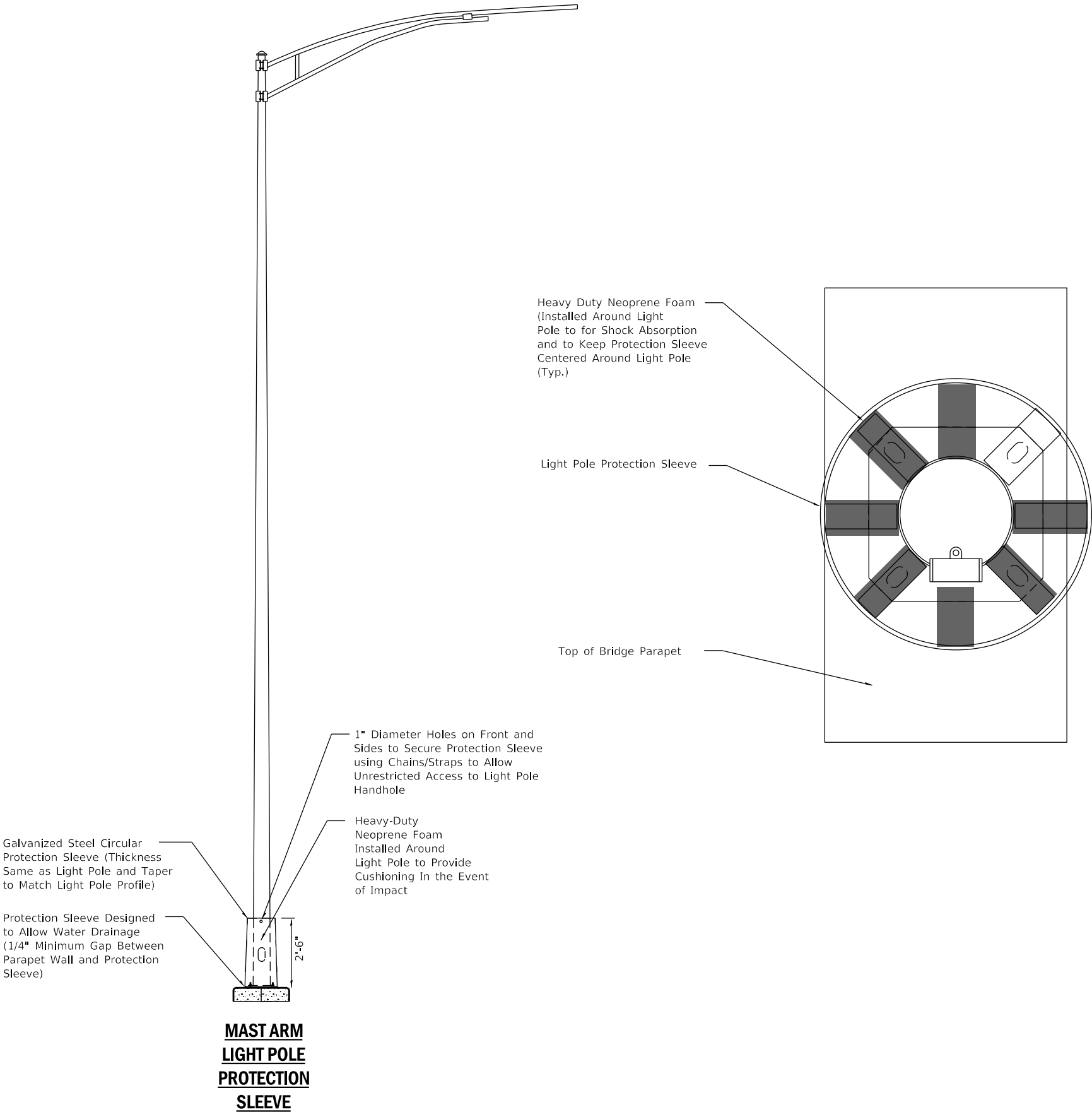
FILE NAME =	USER NAME = hwoelder	DESIGNED -	REVISED -	<div>STATE OF ILLINOIS DEPARTMENT OF TRANSPORTATION</div>	<div>US 150 WB MCLUGGAGE BRIDGE LUMINAIRE REPLACEMENT</div>	F.A.P. RTE.	SECTION	COUNTY	TOTAL SHEETS	SHEET NO.	
D:\common\GEN\Transfer - bureaus\68F17	- Final Plans\68F17 - High Mast Lighting Maintenance\DRAWING\Final-8-22-19.dgn	REVISED -	REVISED -			VAR	D4 ELECTRICAL 2020	VARIOUS	40	37	
	PLOT SCALE = 1/4" = 1'-0"	CHECKED -	REVISED -			CONTRACT NO. 68F17					
	PLOT DATE = 8/23/2019	DATE -	REVISED -								
						SCALE:	STA.		TO STA.		
				ILLINOIS FED. AID PROJECT							



REFER TO SPECIAL PROVISIONS FOR DETAILED SCOPE OF WORK RELATED TO THE REMOVAL OF THE EXISTING LIGHT POLES AND INSTALLATION OF THE PROPOSED LIGHT POLES.

SCHEDULE OF QUANTITIES (SHEET 38)		
ITEM DESCRIPTION	UNIT	QTY.
LIGHT POLE, GALVANIZED STEEL, 45 FT. M.H., 4 FT. MAST ARM	EACH	5.0

FILE NAME =	USER NAME = howelder	DESIGNED -	REVISED -	<div>STATE OF ILLINOIS DEPARTMENT OF TRANSPORTATION</div>	<div>US 150 WB MCLUGGAGE BRIDGE LUMINAIRE REPLACEMENT</div>	F.A.P. RTE.	SECTION	COUNTY	TOTAL SHEETS	SHEET NO.
D:\common\GEN\Transfer - bureaus\68F17	Final Plans-68F17 - High Mast Lighting Maintenance-68F17.dgn	DRAWN Final 8-22-19,dgn	REVISED -			VAR	D4 ELECTRICAL 2020	VARIOUS	40	38
PLOT SCALE = 164.7568 ' / in.	CHECKED -	REVISED -	CONTRACT NO. 68F17							
PLOT DATE = 8/23/2019	DATE	REVISED -	ILLINOIS FED. AID PROJECT							
			SCALE:			STA.	TO STA.			



GENERAL NOTES

Light pole protection sleeve to be installed prior to mast arm installation.

Light pole protection sleeve to be constructed from galvanized steel with the same thickness as the light pole.

Light pole protection sleeve sized as required to provide a three inch minimum clearance around the existing light pole and light pole base.

Light pole protection sleeve to be designed to allow for unrestricted access to the light pole handhole (designed to be lifted up and secured to allow access to handhole).

Light pole protection sleeve to have a three inch wide band of high visibility fluorescent yellow reflective tape (AZ sheeting) on top and bottom.

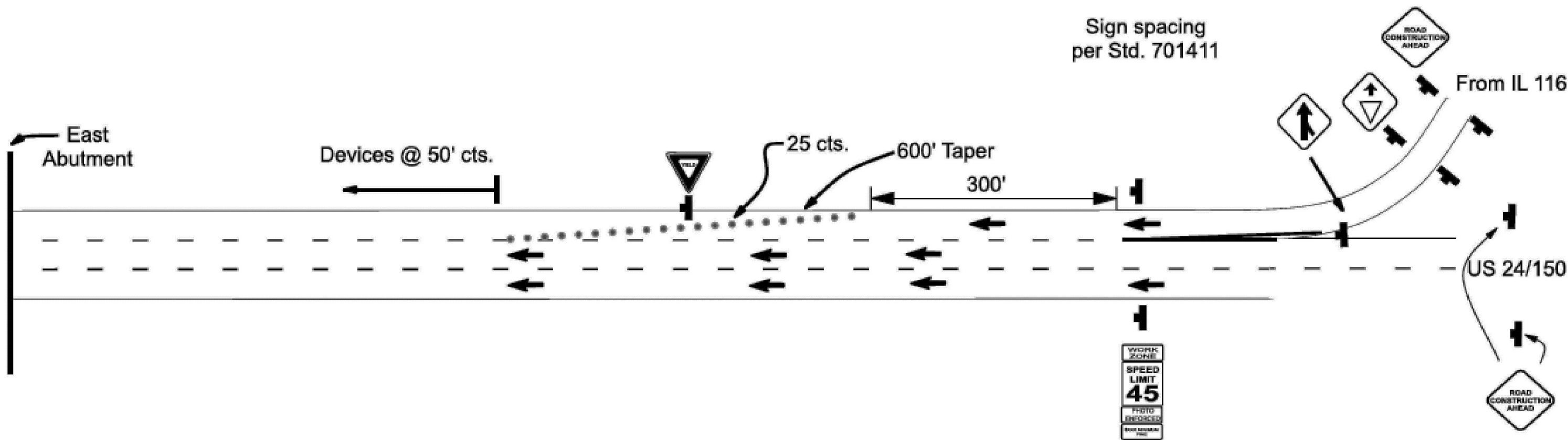
Install high quality outdoor rated neoprene foam (appropriately sized strips or cubes) inside protection sleeve around light pole to keep sleeve optimally centered and provide cushioning/shock absorption to protect light pole in the event of a vehicle or snow plow blade impact.

Light pole protection sleeve and cushioning material to be designed and installed to prevent accumulation of water inside protection sleeve.

Contractor shall submit detailed drawings with catalog cut-sheets for all materials to the Department for review and approval prior to proceeding with fabrication.

FILE NAME = D:\common\GEN\Transfer - bureaus\68F17	USER NAME = howalder	DESIGNED -	REVISED -	STATE OF ILLINOIS DEPARTMENT OF TRANSPORTATION	LIGHT POLE PROTECTION SLEEVE DETAIL					F.A.P. RTE.	SECTION	COUNTY	TOTAL SHEETS	SHEET NO.
	Final Plans\68F17 - High Mast Lighting Main.dgn	DRAWN Final 8-22-19.dgn	REVISED -							VAR	D4 HIGH MAST REPAIR 2014	VARIOUS	40	39
	PLOT SCALE = 164.7568 ' / in.	CHECKED -	REVISED -							CONTRACT NO. 68F17				
	PLOT DATE = 8/23/2019	DATE -	REVISED -							ILLINOIS FED. AID PROJECT				
					SCALE:		STA.	TO STA.						

WB McClugage Traffic Control



GENERAL NOTES:

- When traffic control runs to west end ramp, one EXIT OPEN sign shall be placed 500' in advance.
- Std. 701456 shall be used for west end ramp in conjunction with the above traffic control.
- Two END WORK ZONE SPEED LIMIT signs shall be placed at the end of the work zone.
- A spotter shall be required.

FILE NAME =	USER NAME = howald	DESIGNED -	REVISED -	STATE OF ILLINOIS DEPARTMENT OF TRANSPORTATION	US 150 WB MCLUGGAGE BRIDGE LUMINAIRE REPLACEMENT TRAFFIC CONTROL AND PROTECTION (SPECIAL) DETAIL	F.A.P. RTE.	SECTION	COUNTY	TOTAL SHEETS	SHEET NO.
D:\common\GEN\Transfer - bureaus\68F17	- Final Plans\68F17 - High Mast Lighting Main	DRAWN (Final 8-22-19).dgn	REVISED -			VAR	04 HIGH MAST REPAIR 2014	VARIOUS	40	40
	PLOT SCALE = 1/4" = 1' / in.	CHECKED -	REVISED -							
	PLOT DATE = 8/23/2019	DATE -	REVISED -							
					SCALE:	STA.	TO STA.	ILLINOIS FED. AID PROJECT		
					CONTRACT NO. 68F17					