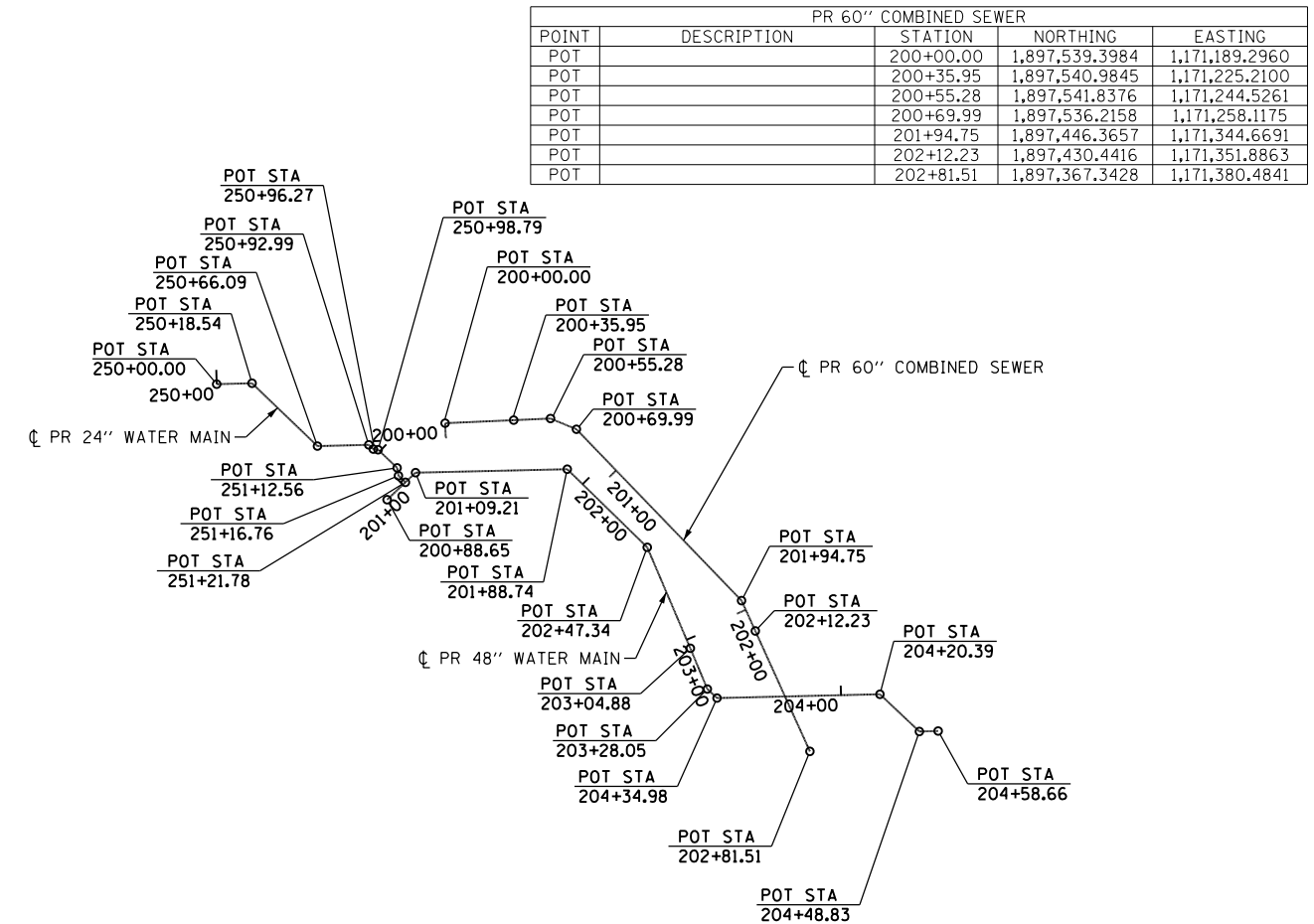
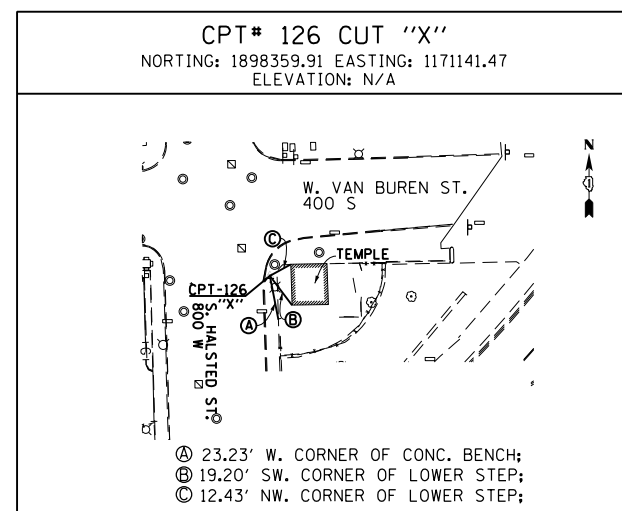
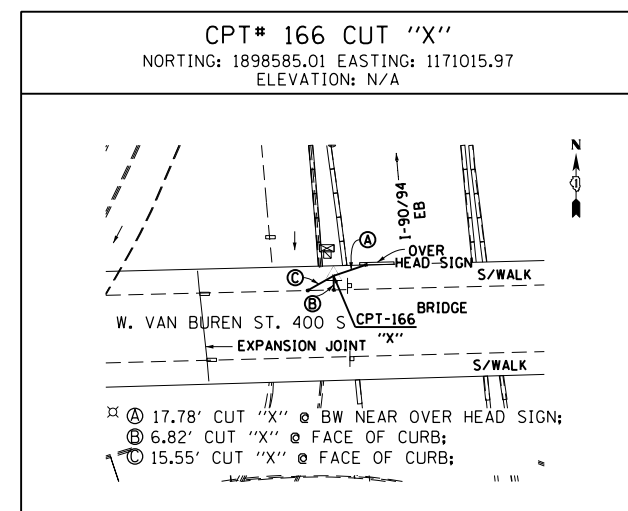
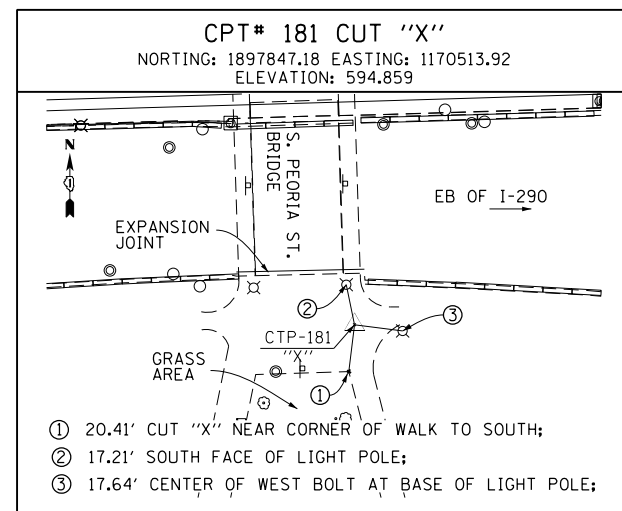
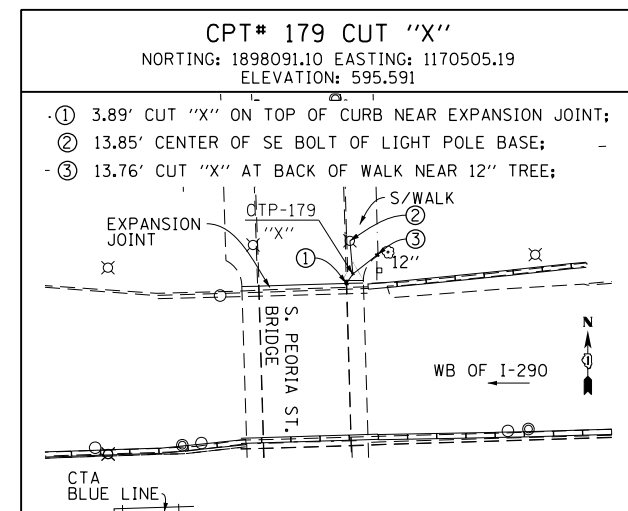
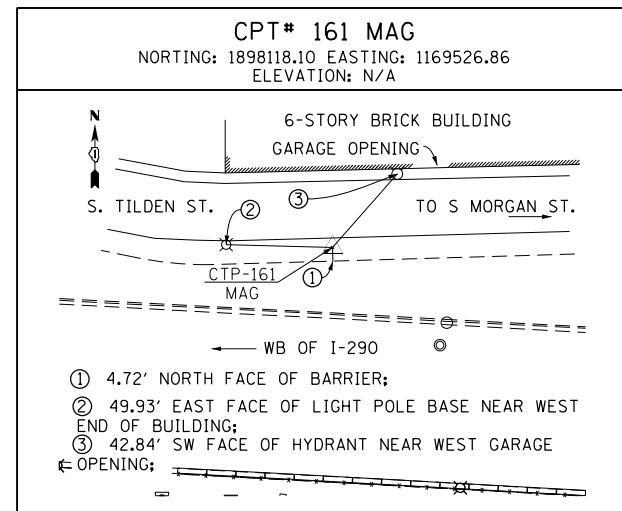
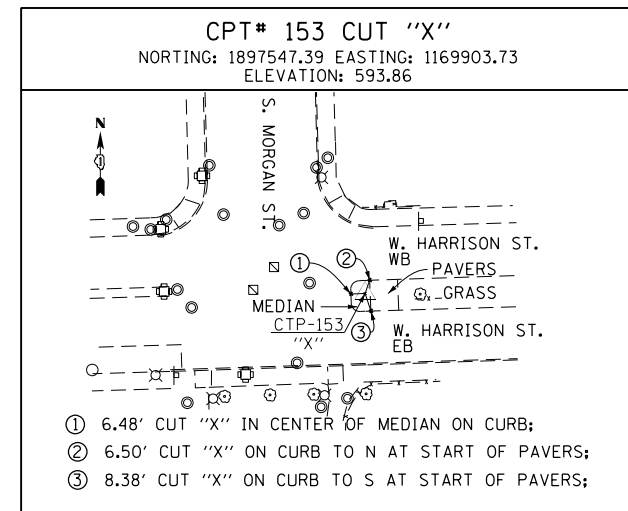


BENCHMARKS		
MONUMENT	ELEVATION	DESCRIPTION
BM 1100	582.6782	SET "X" @ CL OF EAST PIER @ CL OF VAN BUREN ST.
BM 1140	579.3332	SET "X" ON WESTERLY JAYWALL OF I-90 @ CL OF VAN BUREN ST.
BM 1141	575.1320	SET "X" ON WESTERLY JAYWALL OF I-90 @ CL OF OUTBOUND I-290 OVERPASS.
BM 1142	575.9003	SET "X" ON WESTERLY JAYWALL OF I-90 @ CL OF INBOUND I-290 OVERPASS.
BM 1143	580.1100	SET "X" ON WESTERLY JAYWALL OF I-90 ±35' SOUTH OF HARRISON ST. OVERPASS.
BM 1144	585.7601	CHISEL "X" ON OVERHEAD SIGN BOLT. SIGN #D1. W. SIDE OF HARRISON. (CENTER OF 3 EAST BOLTS)
BM 1145	586.1391	CHISEL "X" ON WESTERLY BOLT OF H.M.L.P. CL OF I-90 ± 200' S. OF PUMP/LIFT STATION.
BM 1146	582.9574	SET "X" ON WESTERLY JAYWALL OF I-90 WESTBOUND ± OPPOSITE SIGN #D4
BM 1147	579.4454	SET "X" ON WESTERLY JAYWALL OF ACCIDENT INVESTIGATION SITE ±35' N. OF E. I-90/94 SIGN.
BM 1345	594.1988	"+" CUT WSW FLANGE BOLT FH W. SIDE DES PLAINES ST. ±200' S. OF S HARRISON ST.



PR 60" COMBINED SEWER				
POINT	DESCRIPTION	STATION	NORTHING	EASTING
POT		200+00.00	1,897,539.3984	1,171,189.2960
POT		200+35.95	1,897,540.9845	1,171,225.2100
POT		200+55.28	1,897,541.8376	1,171,244.5261
POT		200+69.99	1,897,536.2158	1,171,258.1175
POT		201+94.75	1,897,446.3657	1,171,344.6691
POT		202+12.23	1,897,430.4416	1,171,351.8863
POT		202+81.51	1,897,367.3428	1,171,380.4841

PR 24" WATER MAIN				
POINT	DESCRIPTION	STATION	NORTHING	EASTING
POT		250+00.00	1,897,559.8692	1,171,069.5840
POT		250+18.54	1,897,560.3273	1,171,088.1150
POT		250+66.09	1,897,527.3761	1,171,122.3998
POT		250+92.99	1,897,528.0427	1,171,149.2963
POT		250+96.27	1,897,525.7863	1,171,151.6674
POT		250+98.79	1,897,525.4877	1,171,154.1685
POT		251+12.56	1,897,515.9925	1,171,164.1461
POT		251+16.76	1,897,511.8558	1,171,164.8493
POT		251+21.78	1,897,508.3947	1,171,168.4863

PR 48" WATER MAIN				
POINT	DESCRIPTION	STATION	NORTHING	EASTING
POT		200+88.65	1,897,499.2748	1,171,158.9004
POT		201+09.21	1,897,513.4500	1,171,173.8000
POT		201+88.74	1,897,515.2575	1,171,253.3104
POT		202+47.34	1,897,474.3163	1,171,295.2355
POT		203+04.88	1,897,421.3876	1,171,317.7982
POT		203+28.05	1,897,400.0064	1,171,326.7304
POT		203+34.98	1,897,395.2762	1,171,331.7937
POT		204+20.39	1,897,397.2725	1,171,417.1756
POT		204+48.83	1,897,377.7503	1,171,437.8564
POT		204+58.66	1,897,377.9993	1,171,447.6909

FILE PATH = p:\388035\part1\escom\line\local\p\AECD\000\Documents\01_Americas\Transportation\60269938_Circle\Phase_1\000_CAD\005_Roadway\Sheets\60W26-shr-atb-05



D160W26-shr-atb-05
 USER NAME = chluo
 PLOT SCALE = 50.0000' / in.
 PLOT DATE = 9/12/2013

DESIGNED - OPS
 DRAWN - PHP
 CHECKED - OPS
 DATE - 9/15/13

REVISED -
 REVISED -
 REVISED -
 REVISED -

STATE OF ILLINOIS
 DEPARTMENT OF TRANSPORTATION

ALIGNMENT, TIES AND BENCHMARKS

SCALE: N.T.S. SHEET 5 OF 6 SHEETS STA. TO STA.

F.A.I. RTE. 90/94/290 SECTION 2013-008R COUNTY COOK TOTAL SHEETS 559 SHEET NO. 48 CONTRACT NO. 60W26 ILLINOIS FED. AID PROJECT