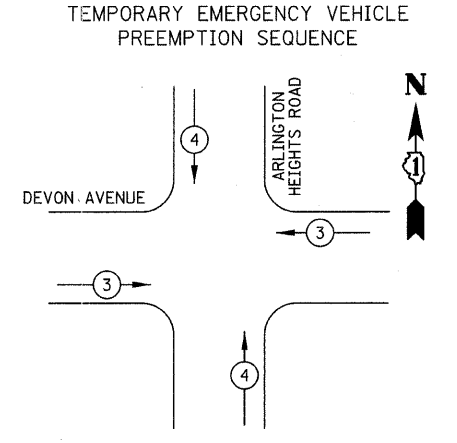
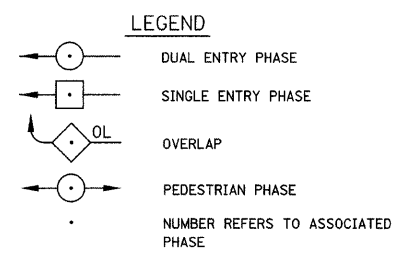


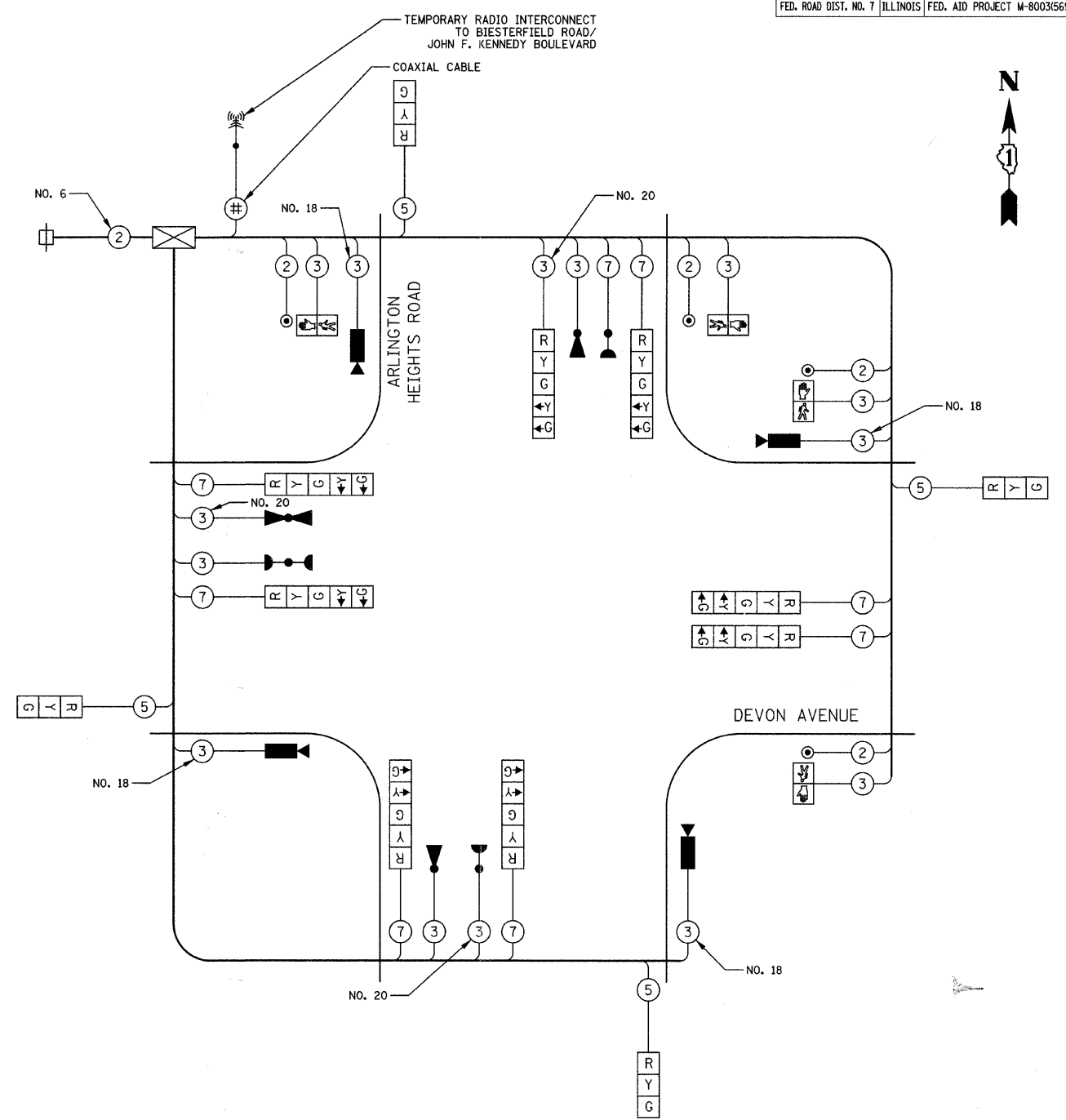
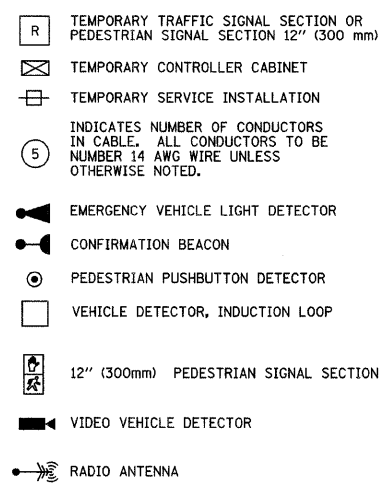
TEMPORARY PHASE DESIGNATION DIAGRAM



| PROPOSED EMERGENCY VEHICLE PREEMPTORS | | |
|---------------------------------------|-----|-----|
| EMERGENCY VEHICLE PREEMPTOR | 3 | 4 |
| MOVEMENT | ← → | ↑ ↓ |



TEMPORARY CABLE PLAN LEGEND



TEMPORARY CABLE PLAN
NOT TO SCALE

TEMPORARY RADIO INTERCONNECT MAY BE USED ON THIS PROJECT AS SHOWN IN THE PLANS. RADIO ANTENNAS SHOULD BE INSTALLED ON THE WOOD POLE ADJACENT TO THE TEMPORARY CONTROLLER AND ON THE SOUTHWEST MAST ARM AT THE INTERSECTION OF ARLINGTON HEIGHTS ROAD AND BEISTERFIELD ROAD/JOHN F. KENNEDY BOULEVARD. ALL WORK RELATED TO INSTALLATION AND ENSURING PROPER OPERATION OF THE TEMPORARY INTERCONNECT SHALL BE INCIDENTAL TO THE PAY ITEM "TEMPORARY TRAFFIC SIGNAL INSTALLATION".

NOTE:
THE TRAFFIC SIGNAL CONTROLLER EQUIPMENT FOR THIS PROJECT SHALL BE "ECONOLITE" TO MATCH THE EXISTING ADJACENT SYSTEM.

| ESTIMATED BILL OF MATERIALS | | |
|---|-------|----------|
| PAY ITEM | UNIT | QUANTITY |
| TEMPORARY WOOD POLE (CLASS 5 OR BETTER) 45 FOOT MINIMUM | EACH | 5 |
| SIGN PANEL - TYPE I | 50 FT | 20 |
| FULL-ACTUATED CONTROLLER AND TEMPORARY CABINET | EACH | 1 |
| SPAN WIRE | FOOT | 668 |
| TETHER WIRE | FOOT | 569 |
| ELECTRIC CABLE AERIAL SUSPENDED, SIGNAL, NO. 14 2C | FOOT | 790 |
| ELECTRIC CABLE AERIAL SUSPENDED, SIGNAL, NO. 14 3C | FOOT | 1,428 |
| ELECTRIC CABLE AERIAL SUSPENDED, SIGNAL, NO. 14 5C | FOOT | 2,823 |
| ELECTRIC CABLE AERIAL SUSPENDED, SIGNAL, NO. 14 7C | FOOT | 1,882 |
| ELECTRIC CABLE AERIAL SUSPENDED, COMMUNICATION, NO. 18 3 PAIR | FOOT | 914 |
| ELECTRIC CABLE AERIAL SUSPENDED, SERVICE, NO. 6 2C | FOOT | 130 |
| ELECTRIC CABLE AERIAL SUSPENDED NO. 20 3/C, TWISTED, SHIELDED | FOOT | 638 |
| SIGNAL HEAD, LED, 1-FACE, 3-SECTION, SPAN WIRE MOUNTED | EACH | 12 |
| SIGNAL HEAD, LED, 1-FACE, 5-SECTION, SPAN WIRE MOUNTED | EACH | 8 |
| PEDESTRIAN SIGNAL HEAD, LED, 1-FACE, BRACKET MOUNTED | EACH | 2 |
| PEDESTRIAN SIGNAL HEAD, LED, 2-FACE, BRACKET MOUNTED | EACH | 1 |
| LIGHT DETECTOR | EACH | 3 |
| LIGHT DETECTOR AMPLIFIER | EACH | 1 |
| PEDESTRIAN PUSH-BUTTON | EACH | 4 |
| VIDEO DETECTION SYSTEM (COMPLETE INTERSECTION) | EACH | 1 |
| SERVICE INSTALLATION - POLE MOUNTED | EACH | 1 |
| RADIO ANTENNA | EACH | 2 |
| RADIO TRANSCEIVER | EACH | 2 |
| MODIFY EXISTING CONTROLLER | EACH | 1 |
| RE-OPTIMIZE TRAFFIC SIGNAL SYSTEM, LEVEL II | EACH | 2 |
| COAXIAL CABLE, AERIAL SUSPENDED | FOOT | 51 |
| COAXIAL CABLE IN CONDUIT | FOOT | 65 |

| TRAFFIC SIGNAL INSTALLATION ELECTRICAL SERVICE REQUIREMENTS | | | | | TOTAL WATTAGE | |
|---|-----------|---------|-----|-------------|---------------|----|
| TYPE | NO. LAMPS | WATTAGE | | % OPERATION | | |
| SIGNAL (RED) | 12 | | 17 | 50 | 102 | |
| | (YELLOW) | 12 | | 25 | 25 | 75 |
| | (GREEN) | 12 | | 15 | 25 | 45 |
| ARROW | 16 | | 12 | 10 | 19 | |
| PED SIGNAL | 4 | | 25 | 100 | 100 | |
| CONTROLLER | 1 | | 100 | 100 | 100 | |
| VIDEO SYSTEMS | 1 | | 150 | 100 | 150 | |
| TOTAL = | | | | | 591 | |

ENERGY COSTS TO: VILLAGE OF ELK GROVE
901 WELLINGTON AVENUE
ELK GROVE VILLAGE, IL 60007

ENERGY SUPPLY: CONTACT: JOHN STRYZAK
PHONE: (630) 691-4363
COMPANY: COM ED

ILLINOIS DEPARTMENT OF TRANSPORTATION

TEMPORARY CABLE PLAN

DEVON AVENUE &
ARLINGTON HEIGHTS ROAD

SCALE: NONE

DATE: 5/27/08
DESIGNED BY: BRD
CHECKED BY: JJE