

SUMMARY OF QUANTITIES

COUNTY:	COUNTY:	SALINE	SALINE	SALINE
ROUTE:	ROUTE:	FAP 869 (IL 34)	FAS 2881 (RALEIGH RD)	FAP 869 (IL 34)
FUNDING:	FUNDING:	80% FED/20% STATE	80% FED/20% STATE	80% FED/20% STATE
LOCATION:	LOCATION:	RURAL	RURAL	RURAL
		ROADWAY	ROADWAY	SN 083-7099
		0004	0005	0040

CODE NUMBER	ITEM DESCRIPTION	UNIT	TOTAL QUANTITY	ROADWAY 0004	ROADWAY 0005	SN 083-7099 0040
20100110	TREE REMOVAL (6-15 UNITS DIAMETER)	UNIT	48	48		
20200100	EARTH EXCAVATION	CU YD	3,276	3,276		
20100210	TREE REMOVAL (OVER 15 UNITS DIAMETER)	UNIT	40	40		
20700220	POROUS GRANULAR EMBANKMENT	CU YD	520	520		
25000200	SEEDING, CLASS 2	ACRE	3	3		
25000400	NITROGEN FERTILIZER NUTRIENT	POUND	247	247		
25000500	PHOSPHORUS FERTILIZER NUTRIENT	POUND	247	247		
25000600	POTASSIUM FERTILIZER NUTRIENT	POUND	247	247		
25000700	AGRICULTURAL GROUND LIMESTONE	TON	6	6		
25100115	MULCH, METHOD 2	ACRE	3	3		
25100630	EROSION CONTROL BLANKET	SO YD	429	429		
28000250	TEMPORARY EROSION CONTROL SEEDING	POUND	824	824		
28000305	TEMPORARY DITCH CHECKS	FOOT	72	72		
28000400	PERIMETER EROSION BARRIER	FOOT	1,100	1,100		
30200750	PROCESSING MODIFIED SOIL 14"	SO YD	22,020	22,020		

△ REVISED 10-20-15

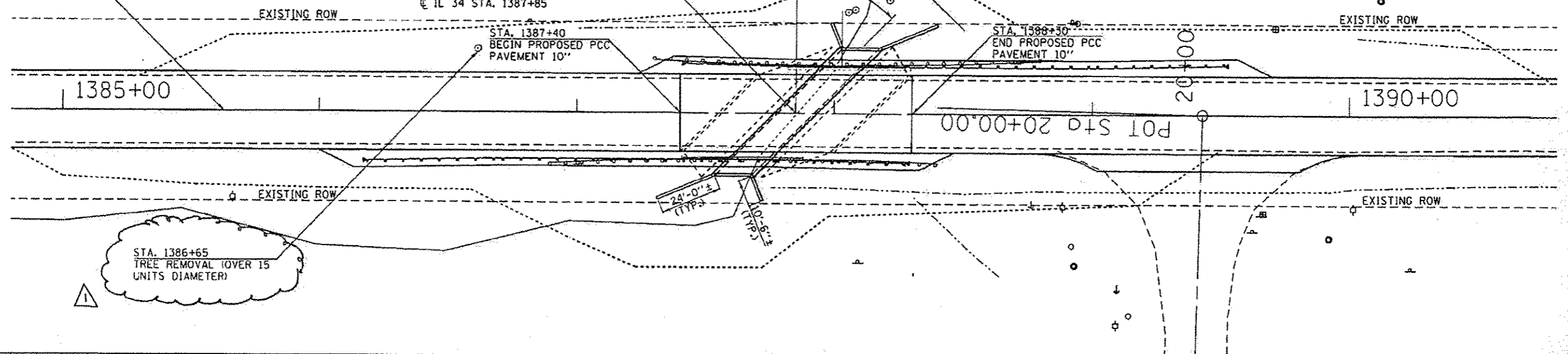
FILE NAME =	USER NAME = eolemm	DESIGNED -	REVISED -	STATE OF ILLINOIS DEPARTMENT OF TRANSPORTATION	SUMMARY OF QUANTITIES	F.A. RTE.	SECTION	COUNTY	TOTAL SHEETS	SHEET NO.	
pm\110848BID\INTEG.illinois.gov\FWIDOT\...	PROJECTS\DOT OFFICES\District 9\Projects\78314\...	DESIGNED -	REVISED -			**	.	SALINE	57	12	
PLLOT SCALE = 100.0000 1/1 in.	CHECKED -	REVISED -	SCALE:			SHEET	OF	SHEETS	STA.	TO STA.	CONTRACT NO. 78314
PLLOT DATE = 9/14/2015	DATE -	REVISED -	ILLINOIS FED. AID PROJECT								



SN 083-7099
 PROPOSED CAST-IN-PLACE
 SINGLE 10' x 8' BOX CULVERT
 70'-8 1/2" END TO END ALONG 45° SKEW
 50' O. TO O. HEADWALLS, 36' CLEAR WIDTH
 AT C/L 34 STA. 1387+85

SN 083-7019
 EXISTING SINGLE 11' x 7' BOX CULVERT
 50'-11" END TO END ALONG 45° SKEW
 36' O. TO O. HEADWALLS
 C/L 34 STA. 1387+85

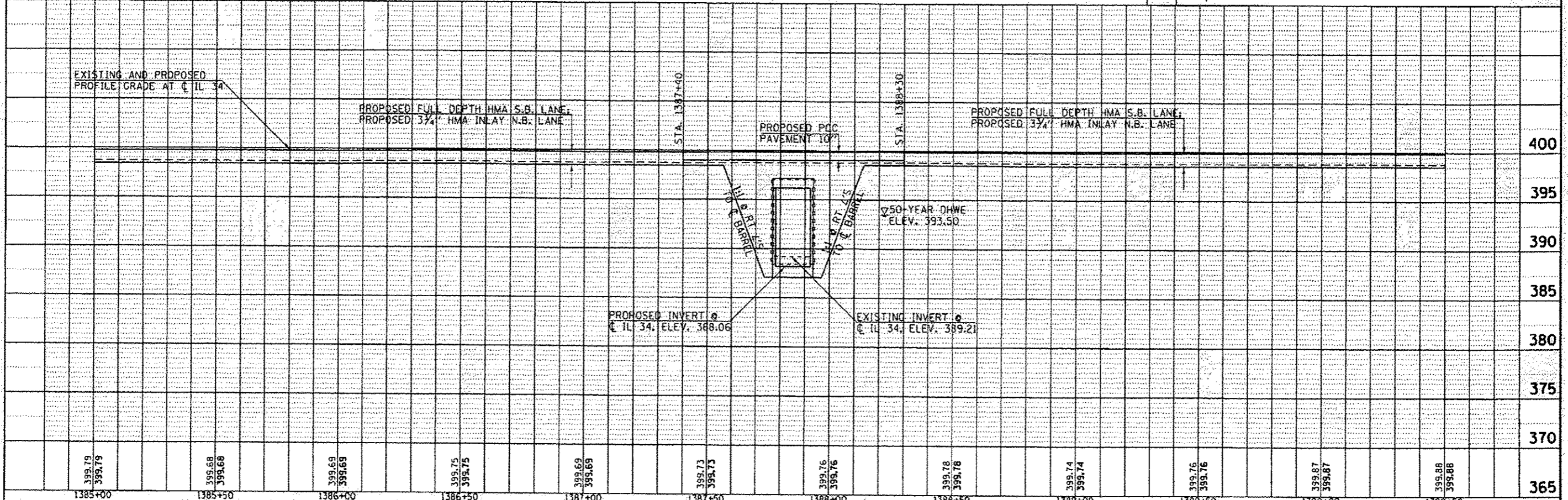
C/FAP 869 (IL 34)



STA. 1386+65
 TREE REMOVAL (OVER 15
 UNITS DIAMETER)

DATE	
BY	
REVISIONS	
NO.	
DESCRIPTION	
DATE	
BY	
PLANNING	
DESIGN	
CONSTRUCTION	
OPERATION	
MAINTENANCE	
UTILITY	
ENVIRONMENTAL	
TRAFFIC	
NOISE	
OTHER	

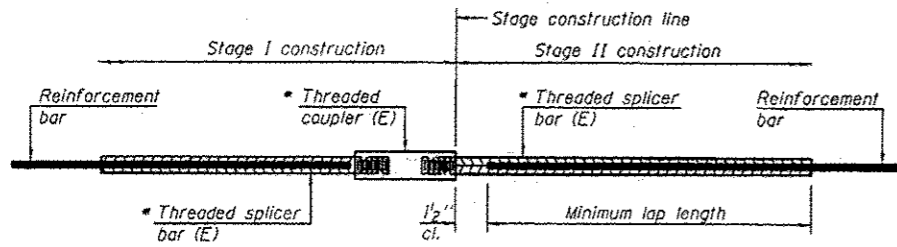
DATE	
BY	
REVISIONS	
NO.	
DESCRIPTION	
DATE	
BY	
PLANNING	
DESIGN	
CONSTRUCTION	
OPERATION	
MAINTENANCE	
UTILITY	
ENVIRONMENTAL	
TRAFFIC	
NOISE	
OTHER	



FILE NAME	USER NAME	DESIGNED	REVISED	STATE OF ILLINOIS DEPARTMENT OF TRANSPORTATION	PLAN/PROFILE IL 34	F.A. RTE.	SECTION	COUNTY	TOTAL SHEETS	SHEET NO.
Default	colom	-	-			**	*	SALINE	57	30
	PLAT SCALE = 48.0000' / in.	CHECKED	REVISED		SCALE: SHEET OF SHEETS STA. 1385+00 TO STA. 1390+50			CONTRACT NO.	78314	
	PLAT DATE = 10/8/2015	DATE	REVISED					ILLINOIS FED. AID PROJECT		

REVISOR 10-20-15

1104.105/R-2130.31RS-6/1048-3 **FAP869/FAS 2861

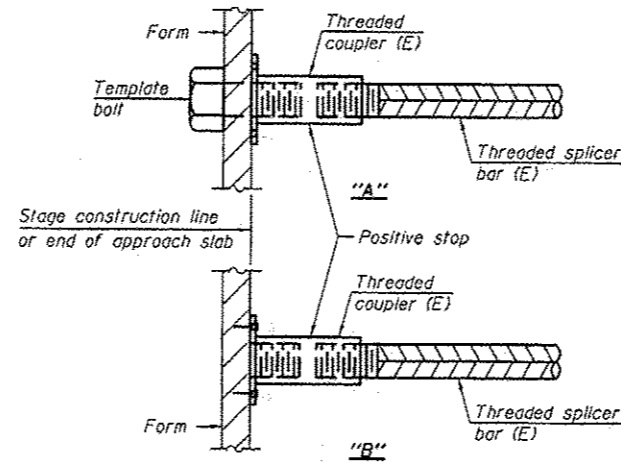


STANDARD BAR SPLICER ASSEMBLY

Threaded splicer bar length = min. lap length + 1/2" + thread length

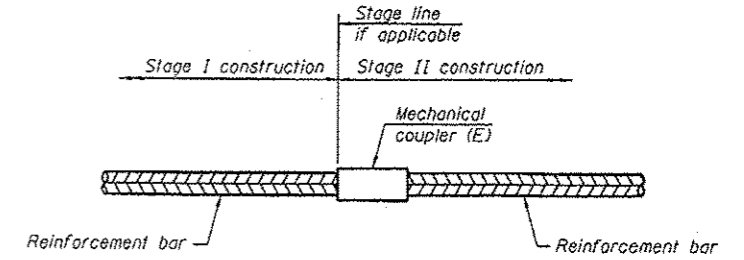
* Epoxy not required on Bar Splicer Assembly components used in conjunction with black bars.

Location	Bar size	No. assemblies required	Minimum lap length
Top Slab	#5	12	2' 10"
Top Slab	#6	14	3' 7"
Bottom Slab	#5	12	2' 10"
Bottom Slab	#6	14	3' 7"
Sidewalls	#5	22	2' 10"



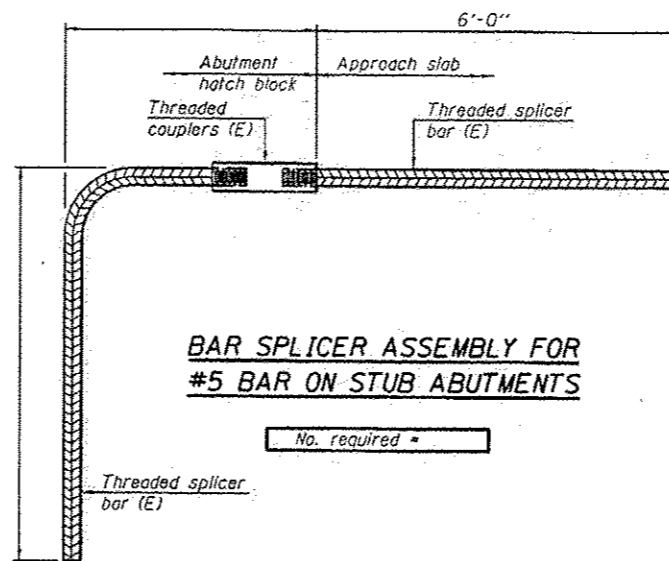
INSTALLATION AND SETTING METHODS

"A": Set bar splicer assembly by means of a template bolt.
 "B": Set bar splicer assembly by nailing to wood forms or cementing to steel forms.
 (E): Indicates epoxy coating.



STANDARD MECHANICAL SPLICER

Location	Bar size	No. assemblies required



BAR SPLICER ASSEMBLY FOR #5 BAR ON STUB ABUTMENTS

No. required =

NOTES

Splicer bars shall be deformed with threaded ends and have a minimum 60 ksi yield strength.
 All reinforcement shall be lapped and tied to the splicer bars.
 Bar splicer assemblies shall be epoxy coated according to the requirements for reinforcement bars. See Section 508 of the Standard Specifications.
 See approved list of bar splicer assemblies and mechanical splicers for alternatives.

BSD-1

6-8-15

FILE NAME: p:\11041051R-2\30.31\RS-6\1048-3 HAMPTON, LENZINI AND RENWICK, INC. 11041051R-2\30.31\RS-6\1048-3 ILLINOIS PROFESSIONAL DESIGN FIRM 131 W. 181 ST. COMPTON, IL 60094	DESIGNED BY: T.J.A. CHECKED: T.J.A. DRAWN: D.A.B. CHECKED: M.D.C.	REVISIONS: REVISION NO. 1: 10-20-15 REVISION NO. 2: 10-20-15 REVISION NO. 3: 10-20-15	STATE OF ILLINOIS DEPARTMENT OF TRANSPORTATION	BAR SPLICER ASSEMBLY AND MECHANICAL SPLICER DETAILS STRUCTURE NO. 083-7099 SHEET NO. 8 OF 9 SHEETS	F.A. SECTION COUNTY TOTAL SHEETS SHEET NO. ** - - - - - SALINE 57 38 CONTRACT NO. 78314
---	--	--	---	--	---

REVISOR 10-20-15