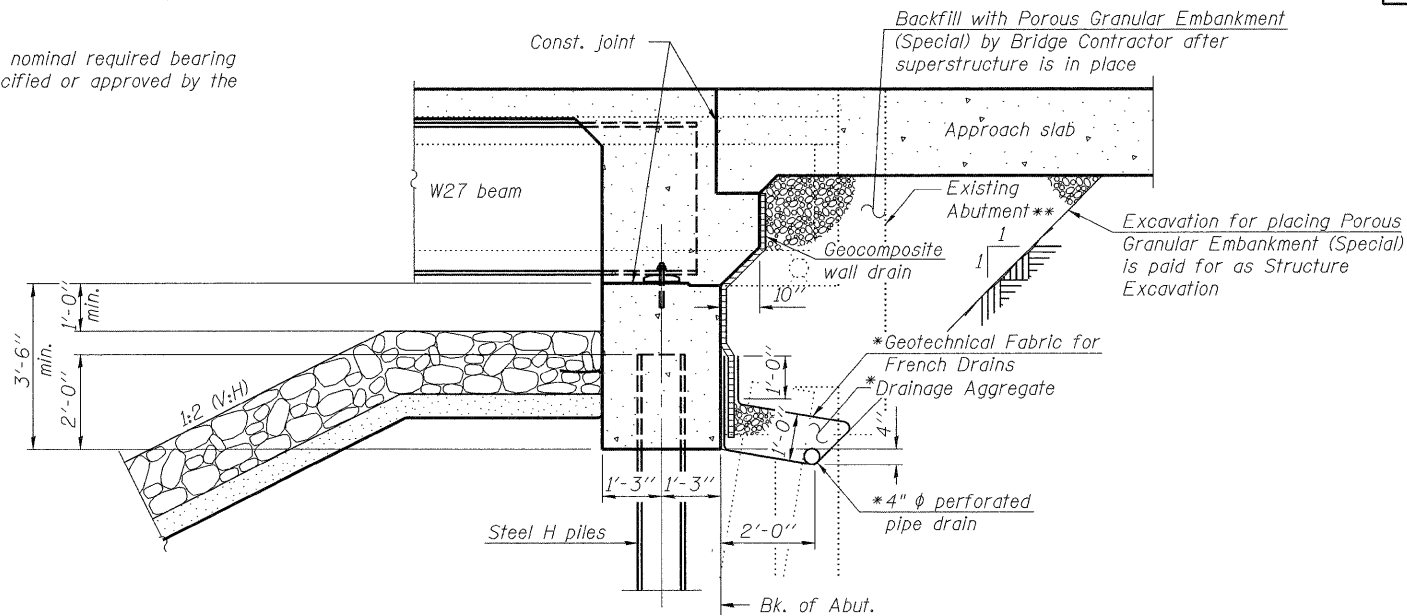


STATE OF ILLINOIS  
DEPARTMENT OF TRANSPORTATION

**GENERAL NOTES:**

- Fasteners shall be AASHTO M164 Type 1, mechanically galvanized bolts. Bolts  $\frac{7}{8}$  in.  $\phi$ , holes  $\frac{15}{16}$  in.  $\phi$ , unless otherwise noted.
- Calculated weight of Structural Steel = 72,550 pounds (AASHTO, M270, Grade 50), = 8,180 pounds (AASHTO, M270, Grade 36).
- No field welding is permitted except as specified in the contract documents.
- Reinforcement bars shall conform to the requirements of ASTM A 706 Gr 60. See Special Provisions.
- Reinforcement bars designated (E) shall be epoxy coated.
- If the Contractor elects to use cantilever forming brackets on the exterior beams or girders, the brackets shall be placed at the same locations as required for the hardwood blocks in Article 503.06(b) of the Standard Specifications. If additional cantilever forming brackets are required, hardwood blocking shall be wedged between the exterior and first interior beam at each of these additional bracket locations.
- Plan dimensions and details relative to existing plans are subject to nominal construction variations. The Contractor shall field verify existing dimensions and details affecting new construction and make necessary approved adjustments prior to construction or ordering of materials. Such variations shall not be cause for additional compensation for a change in scope of the work, however, the Contractor will be paid for the quantity actually furnished at the unit price bid for the work.
- Bearing seat surfaces shall be constructed or adjusted to their designated elevations within a tolerance of  $\frac{1}{8}$  inch (0.01 ft.). Adjustment shall be made either by grinding the surface or by shimming the bearings.
- Layout of slope protection system may be varied in the field to suit ground conditions as directed by the Engineer.
- The Contractor shall drive test piles to 110% of the nominal required bearing specified in production locations at substructures specified or approved by the Engineer before ordering the remainder of piles.

- The existing structural steel coating contains lead. The Contractor shall take appropriate precautions to deal with the presence of lead on this project.
- The Organic Zinc Rich Primer / Epoxy / Urethane Paint System shall be used for painting of new structural steel except where otherwise noted. The entire system shall be shop applied, with the exception that masked off connection surfaces, field installed fasteners and damaged areas shall be touched up in the field. The color of the final finish coat for all interior steel surfaces shall be Gray, Munsell No. 5B 7/1. The color of the final finish coat for the exterior and bottom flange of the fascia beams shall be Reddish Brown, Munsell No. 2.5YR 3/4. See Special Provision for "Cleaning and Painting New Metal Structures".
- "Slip forming" of the concrete parapets is not allowed.
- The Contractor shall submit Structural Assessment Report(s) as required for the Contractor's means and methods of construction. "See Special Provisions"
- If the Contractor elects to use cantilever forming brackets on the exterior beams, the brackets shall be placed at the same locations as required for the hardwood blocks in Article 503.06(b) of the Standard Specifications. If additional cantilever forming brackets are required, hardwood blocking shall be wedged between the exterior and first interior beam at each of these additional bracket locations.
- Layout of the slope protection system may be varied to suit ground conditions in the field as directed by the Engineer.
- The SSPC OPI Painting Contractor Certification is required for this contract.
- The Contractor shall Submit Structural Assessment Report(s) as required for the Contractor's means and methods of construction. See Special Provisions.



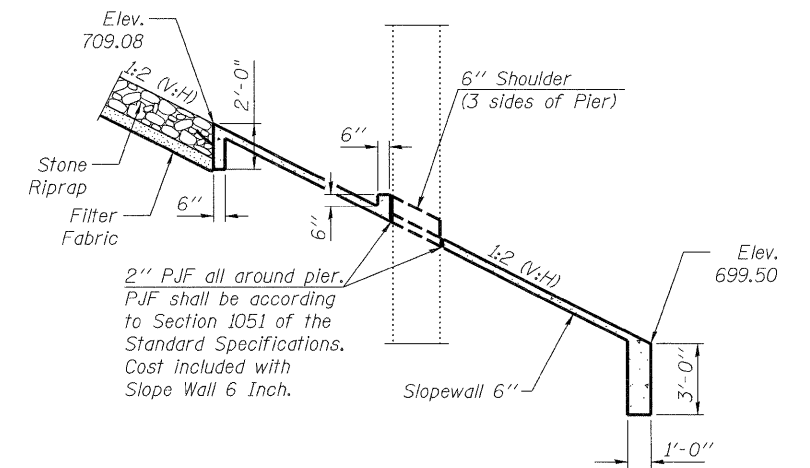
**SECTION THRU INTEGRAL ABUTMENT**

- \* Included in the cost of Pipe Underdrains for Structures, 4".
- \*\* Remove Backwall and Abutment including top portion of Precast Concrete Piles to elevation 717.0. "Cost included with Removal of Existing Sub-Structures".

Note:  
All drainage system components shall be extended to 2'-0" from the end of each wingwall except an outlet pipe shall extend until intersecting with the side slopes (See Article 601.05 of the Standard Specifications and Highway Standard 601101).

**TOTAL BILL OF MATERIAL**

ITEM	UNIT	SUPER.	SUB.	TOTAL
Porous Granular Embankment, Special	Cu Yd	-	120	120
Stone Riprap, Class A4	Sq Yd	-	547	547
Filter Fabric	Sq Yd	-	547	547
Approach Slab Removal	Sq Yd	231	-	231
Removal of Existing Superstructures	Each	1	-	1
Slope Wall Removal	Sq Yd	-	459	459
Removal of Existing Sub-Structures	Each	-	2	2
Structure Excavation	Cu Yd	-	80	80
Floor Drains	Each	5	-	5
Concrete Structures	Cu Yd	-	61.9	61.9
Concrete Superstructure	Cu Yd	284	-	284
Bridge Deck Grooving	Sq Yd	471	-	471
Concrete Encasement	Cu Yd	-	4.2	4.2
Protective Coat	Sq Yd	575	-	575
Furnishing and Erecting Structural Steel	L Sum	0.8	-	0.8
Stud Shear Connectors	Each	3,078	-	3,078
Reinforcement Bars, Epoxy Coated	Pound	66,350	10,760	77,110
Bar Splicers	Each	70	-	70
Slope Wall 6 Inch	Sq Yd	-	517	517
Furnishing Steel Piles HP10x42	Foot	-	365	365
Driving Piles	Foot	-	365	365
Test Pile Steel HP10x42	Each	-	2	2
Name Plates	Each	1	-	1
Elastomeric Bearing Assembly, Type I	Each	12	-	12
Anchor Bolts, 1"	Each	24	-	24
Anchor Bolts, 1/4"	Each	24	-	24
Geocomposite Wall Drain	Sq Yd	-	48	48
Pipe Underdrains for Structures 4"	Foot	-	119	119
Drainage Scuppers, DS-12	Each	2	-	2
Structural Repair of Concrete (Depth Equal To or Less Than 5")	Sq Ft	-	84	84
Underwater Structure Excavation Protection - Location 1	Each	-	0.5	0.5
Underwater Structure Excavation Protection - Location 2	Each	-	0.5	0.5



**SECTION THRU  
CONCRETE SLOPEWALL**

Slope wall shall be reinforced with welded wire fabric, 6" x 6" - W4.0 x W4.0, weighing 58 lbs. per 100 sq. ft.

**GENERAL NOTES, TOTAL BILL OF MATERIAL  
AND SECTION THRU INTEGRAL ABUTMENT  
NORTHBOUND ILLINOIS ROUTE 394 OVER PLUM CREEK  
STATION 20+07.55**

DESIGNED	SK/GMK/LCM
CHECKED	GBC/GMK/SMK
DRAWN	RR/LCM/SK
CHECKED	GBC/GMK/SMK



SHEET NO. 2 26 SHEETS	F.A.P. RTE. 332	SECTION 2002-113R	COUNTY WILL	TOTAL SHEETS	SHEET NO. 147
	SN-099-0147		CONTRACT NO. 62542		
FED. ROAD DIST. NO. 1 ILLINOIS FED. AID PROJECT					