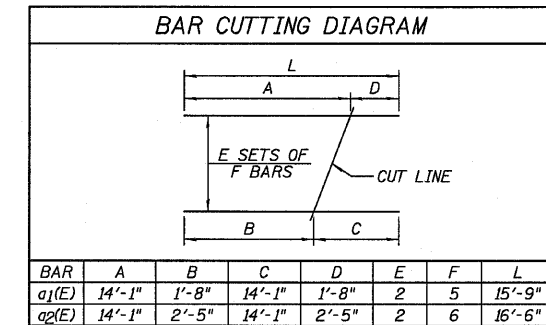
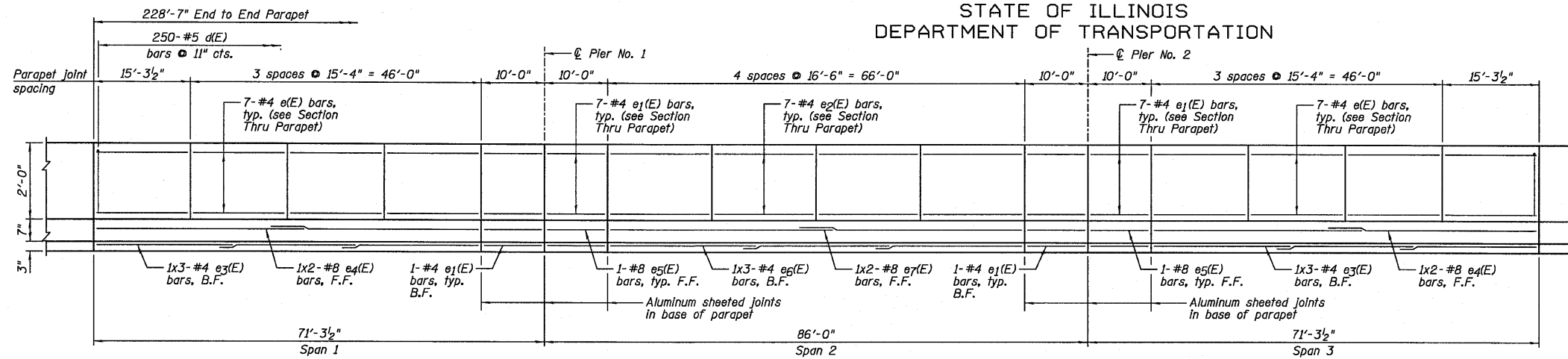
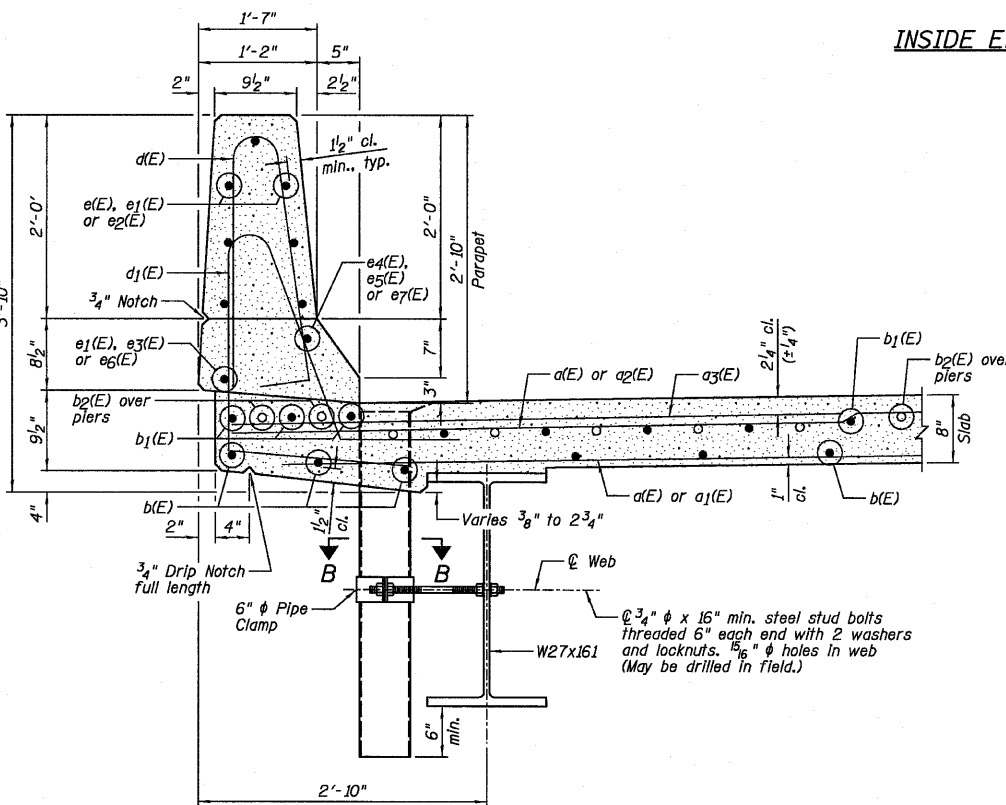


STATE OF ILLINOIS  
DEPARTMENT OF TRANSPORTATION

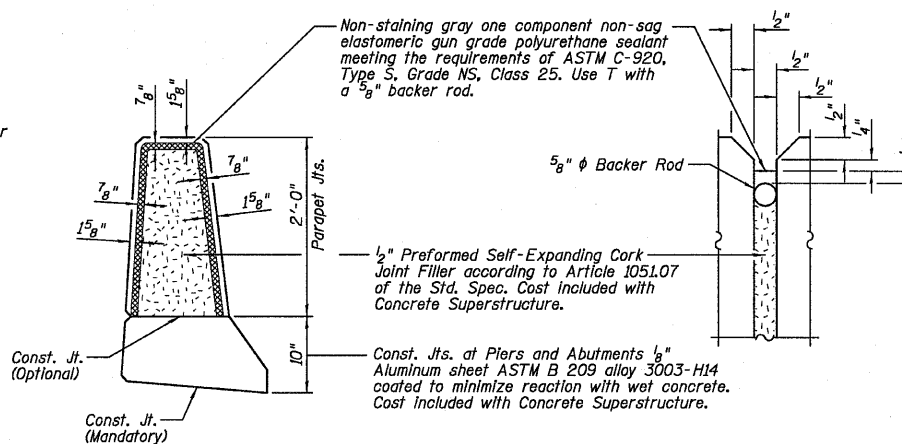


INSIDE ELEVATION OF PARAPET

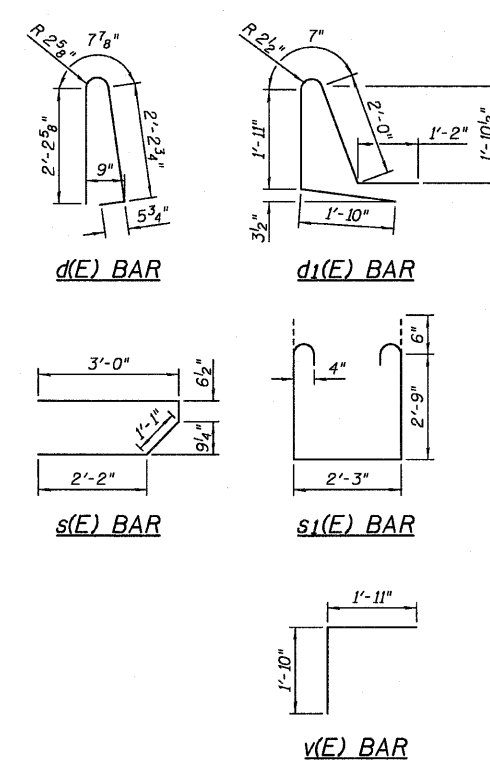


BAR LAP

#4	2'-0"
#8	5'-2"



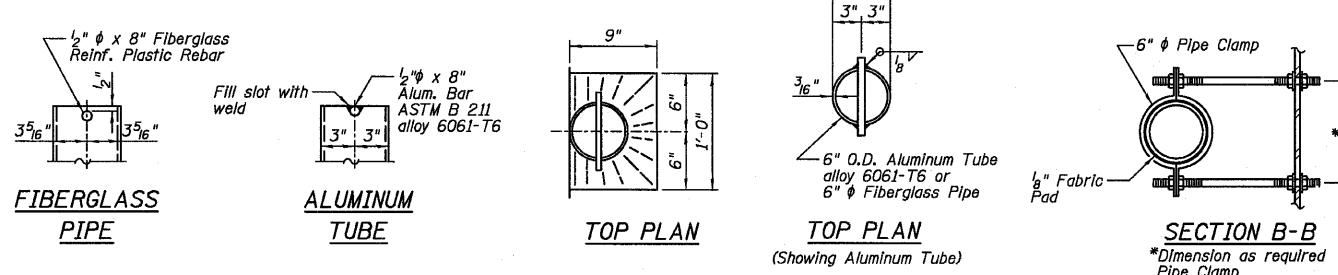
PARAPET JOINT DETAILS



SUPERSTRUCTURE  
BILL OF MATERIAL

Bar	No.	Size	Length	Shape
a(E)	1,256	#5	16'-1"	
a1(E)	10	#5	15'-9"	
a2(E)	12	#5	16'-6"	
a3(E)	716	#6	6'-6"	
a4(E)	8	#5	16'-10"	
b(E)	234	#5	27'-2"	
b1(E)	288	#5	30'-4"	
b2(E)	68	#6	41'-0"	
d(E)	500	#5	5'-7"	
d1(E)	500	#5	7'-6"	
e(E)	112	#4	15'-0"	
e1(E)	64	#4	9'-8"	
e2(E)	56	#4	16'-2"	
e3(E)	12	#4	21'-8"	
e4(E)	8	#8	33'-1"	
e5(E)	8	#8	9'-8"	
e6(E)	6	#4	23'-3"	
e7(E)	4	#8	35'-5"	
m(E)	8	#6	2'-6"	
m1(E)	8	#6	5'-3"	
m2(E)	24	#6	7'-10"	
m3(E)	20	#6	16'-10"	
s(E)	72	#5	6'-10"	
s1(E)	64	#4	8'-9"	
v(E)	68	#5	3'-9"	
Item	Unit	Quantity		
Concrete Superstructure	Cu. Yd.	272.2		
Reinforcement Bars, Epoxy Coated	Pound	61,060		
Bar Splicers	Each	724		

SECTION THRU PARAPET



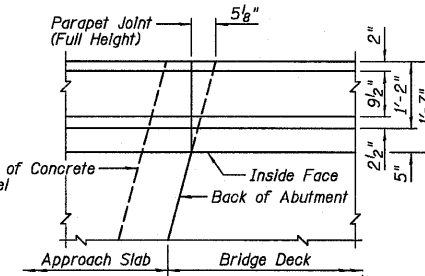
FIBERGLASS PIPE

ALUMINUM TUBE

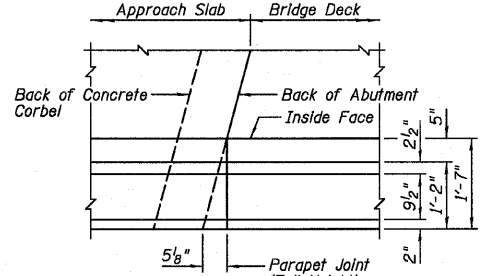
TOP PLAN

TOP PLAN (Showing Aluminum Tube)

SECTION B-B



DETAIL A



DETAIL B

SUPERSTRUCTURE DETAILS  
STRUCTURE NO. 053-0188

DESIGNED	SDH
CHECKED	JML
DRAWN	DJM
CHECKED	MSW

Notes:  
Drains shall be located clear of all diaphragms.  
The exterior surfaces of the floor drains shall be painted with the finish coat as specified in the special provisions for Cleaning and Painting New Metal Structures. The exterior surfaces of the drains shall be cleaned according to the Society of Protective Coatings' Spec. SSPC-SP1 prior to painting.  
Fiberglass pipe shall conform to ASTM D 2996, with short-time rupture strength hoop tensile stress of 30,000 p.s.i. minimum.  
Galvanize clamping device according to AASHTO M232. Cost of clamping device and inserts is included with Floor Drains.

- NOTES:
- 1.) B.F. denotes Back Face and F.F. denotes Front Face.
  - 2.) Inside elevation of parapet view is exaggerated vertically to show reinforcement.
  - 3.) Bars indicated thus 1x3-#4 etc. indicates 1 line of bars with 3 lengths per line.
  - 4.) For location of Detail A and Detail B, see Sheet B9.

**Farnsworth GROUP, INC.**  
2709 McGraw Drive  
Bloomington, Illinois 61704  
309/663-8435, 309/663-1571 fax

SHEET NO. B10	F.A.P. RTE. 317	SECTION (25)BR-2	COUNTY LIVINGSTON	TOTAL SHEETS 58	SHEET NO. 33
26 SHEETS	CONTRACT NO. 66823		FED. ROAD DIST. NO. ILLINOIS FED. AID PROJECT		

DATE 08/13/10