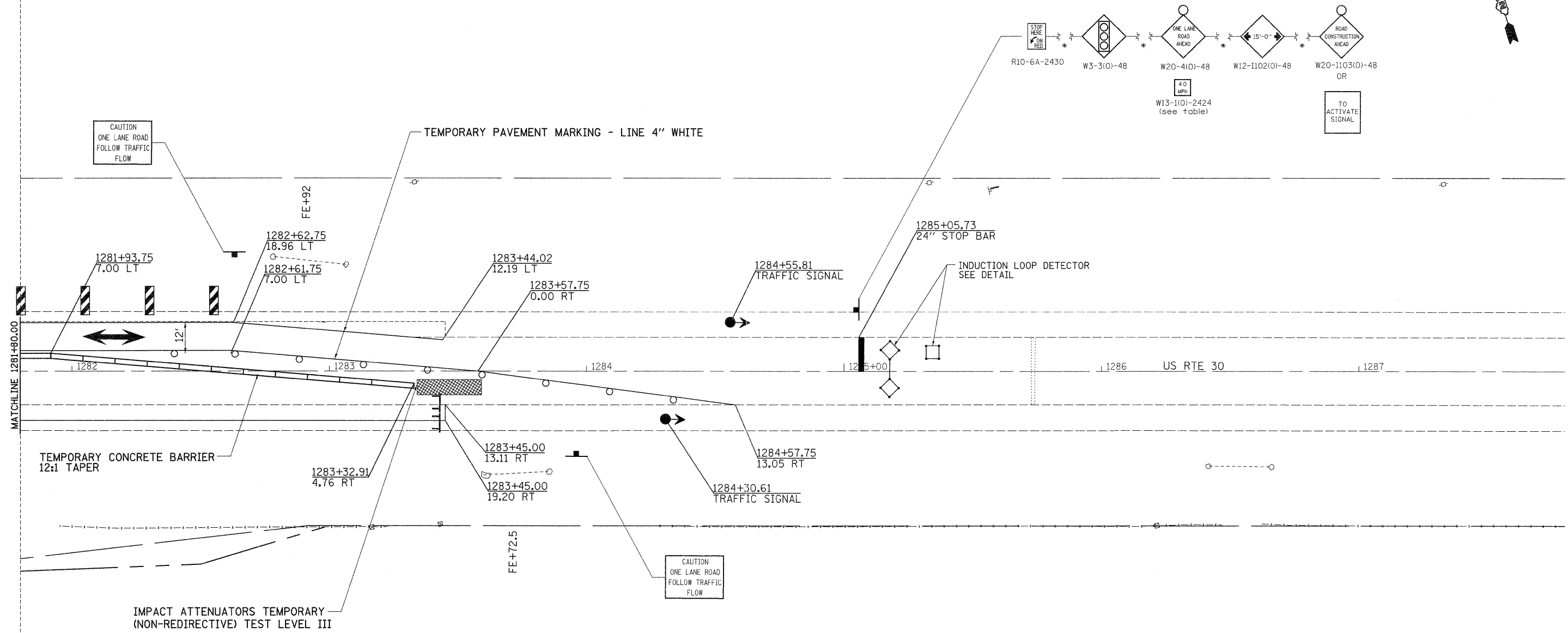


STAGE 1



STAGE 1 NOTES

1. USE STANDARD 701321 FOR CULVERT WORK.
2. CONSTRUCT CULVERT RT TO STAGE CONSTRUCTION LINE.
3. PLACE PROPOSED SHOULDERS RT FROM STA 1279+04.50 TO STA 1283+45.
4. GRADE AND SHAPE SLOPES.

FILE NAME =	USER NAME = hensonke	DESIGNED -	REVISED -	STATE OF ILLINOIS DEPARTMENT OF TRANSPORTATION	US 30 STAGING DETAIL SHEETS			F.A.P. RTE.	SECTION	COUNTY	TOTAL SHEETS	SHEET NO.
ct:\pw_work\pxidot\hensonke\d0133232\020609-sh1-staging.dgn	PLOT SCALE = 20,0000' / 1" =	DRAWN -	REVISED -		309	15T-1	WHITESIDE	74	26			
PLOT DATE = Fri Jun 24 07:44:15 2011	DATE -	CHECKED -	REVISED -		SCALE: SHEET NO. OF SHEETS STA. TO STA.			ILLINOIS FED. AID PROJECT				
		DATE -	REVISED -		CONTRACT NO. 64F23							