

SB FACE OF PARAPET

Location	Station	Offset	Theoretical Grade Elevations
S. End of N. Appr. Pav't	24+71.58	-33.50	662.67
C1	24+81.58	-33.50	662.62
C2	24+91.58	-33.50	662.57
N. End of N. Appr. Pav't	25+01.58	-33.50	662.51

SB CURB LINE

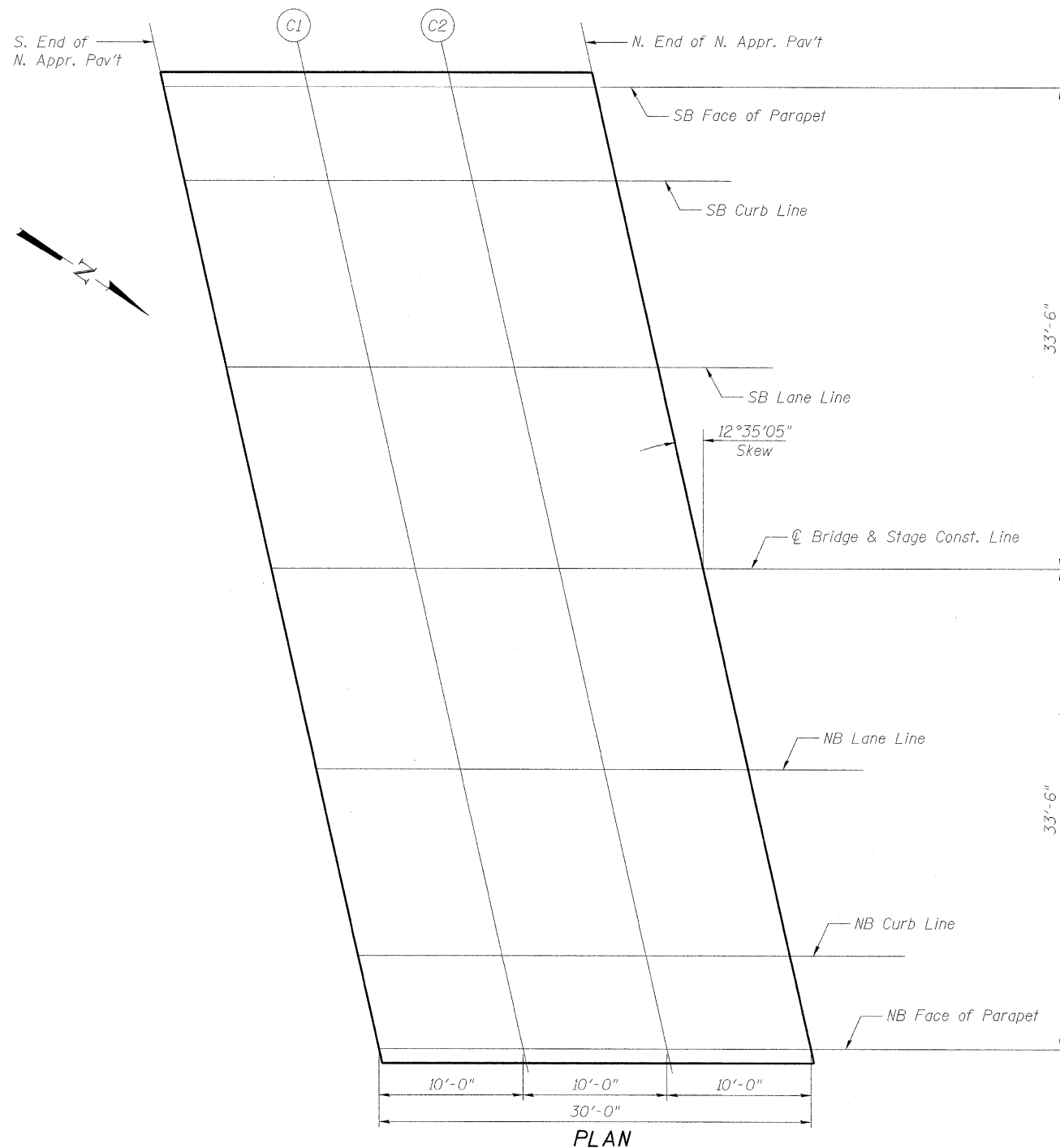
Location	Station	Offset	Theoretical Grade Elevations
S. End of N. Appr. Pav't	24+73.03	-27.00	662.80
C1	24+83.03	-27.00	662.75
C2	24+93.03	-27.00	662.70
N. End of N. Appr. Pav't	25+03.03	-27.00	662.64

SB LANE LINE

Location	Station	Offset	Theoretical Grade Elevations
S. End of N. Appr. Pav't	24+75.93	-14.00	663.06
C1	24+85.93	-14.00	663.01
C2	24+95.93	-14.00	662.95
N. End of N. Appr. Pav't	25+05.93	-14.00	662.89

☉ BRIDGE & STAGE CONST. LINE

Location	Station	Offset	Theoretical Grade Elevations
S. End of N. Appr. Pav't	24+79.06	0.00	663.26
C1	24+89.06	0.00	663.21
C2	24+99.06	0.00	663.15
N. End of N. Appr. Pav't	25+09.06	0.00	663.09



NB LANE LINE

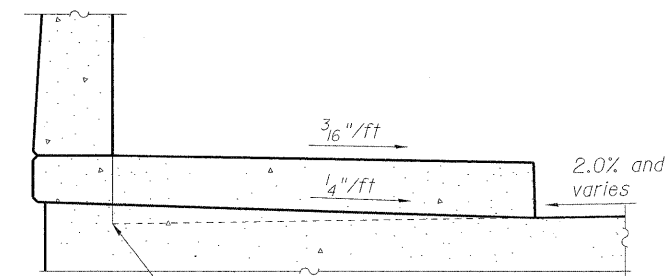
Location	Station	Offset	Theoretical Grade Elevations
S. End of N. Appr. Pav't	24+82.19	14.00	663.03
C1	24+92.19	14.00	662.97
C2	25+02.19	14.00	662.91
N. End of N. Appr. Pav't	25+12.19	14.00	662.85

NB CURB LINE

Location	Station	Offset	Theoretical Grade Elevations
S. End of N. Appr. Pav't	24+85.09	27.00	662.74
C1	24+95.09	27.00	662.69
C2	25+05.09	27.00	662.62
N. End of N. Appr. Pav't	25+15.09	27.00	662.56

NB FACE OF PARAPET

Location	Station	Offset	Theoretical Grade Elevations
S. End of N. Appr. Pav't	24+86.54	33.50	662.60
C1	24+96.54	33.50	662.54
C2	25+06.54	33.50	662.48
N. End of N. Appr. Pav't	25+16.54	33.50	662.41



Elevations at face of parapet are given at the theoretical top of roadway surface which is the projection of the roadway slope beneath the superimposed sidewalk.

PROJECTION UNDER SIDEWALK DETAIL

FILE NAME = g:\projects\1102155_024\road\structure\sh\11015_60863_0091_Appr_Elev.dgn



USER NAME = 2sagerb
 PLOT SCALE = N/A
 PLOT DATE = 8/5/2011

DESIGNED - TWO
 CHECKED - BHS
 DRAWN - TWO
 CHECKED - GSP

REVISED -
 REVISED -
 REVISED -
 REVISED -

**STATE OF ILLINOIS
 DEPARTMENT OF TRANSPORTATION**

**TOP OF NORTH APPROACH ELEVATIONS
 STRUCTURE NO. 016-1015**
 SHEET NO. S9 OF 36 SHEETS

F.A.I. RTE.	SECTION	COUNTY	TOTAL SHEETS	SHEET NO.
57	1112.1B	COOK	75	36

CONTRACT NO. 60863
 FED. ROAD DIST. NO. 1 ILLINOIS FED. AID PROJECT