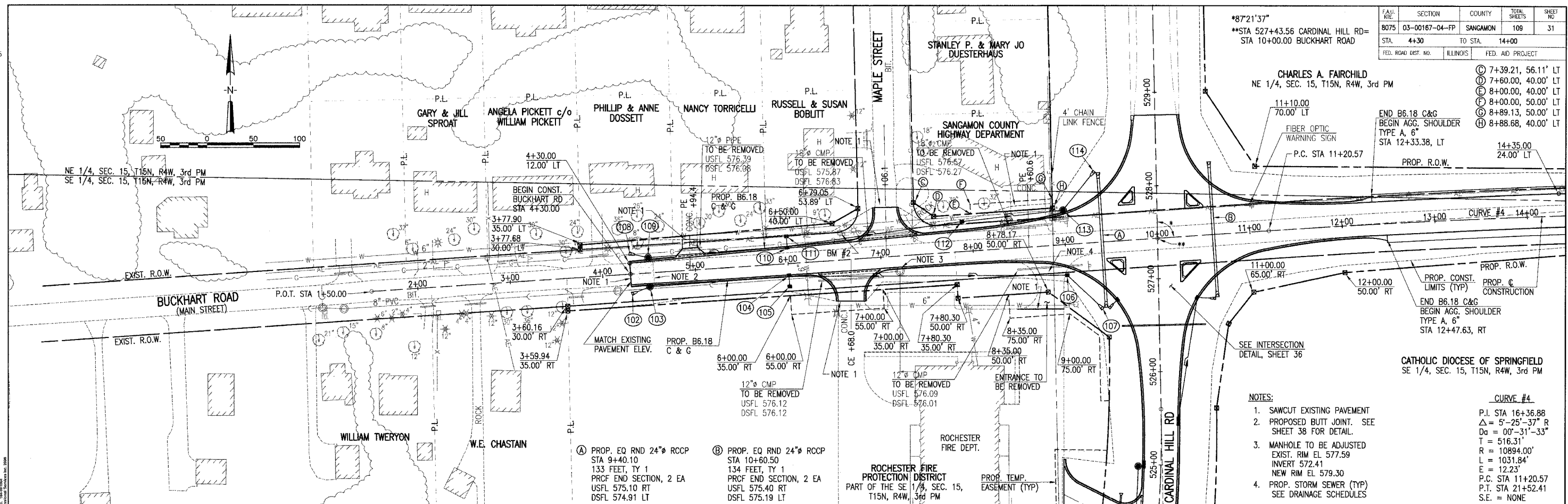


Xrefs:  
 PLAN-E  
 GRID-E  
 C-TP  
 C-ROW  
 C-RP  
 C-PP005

8343

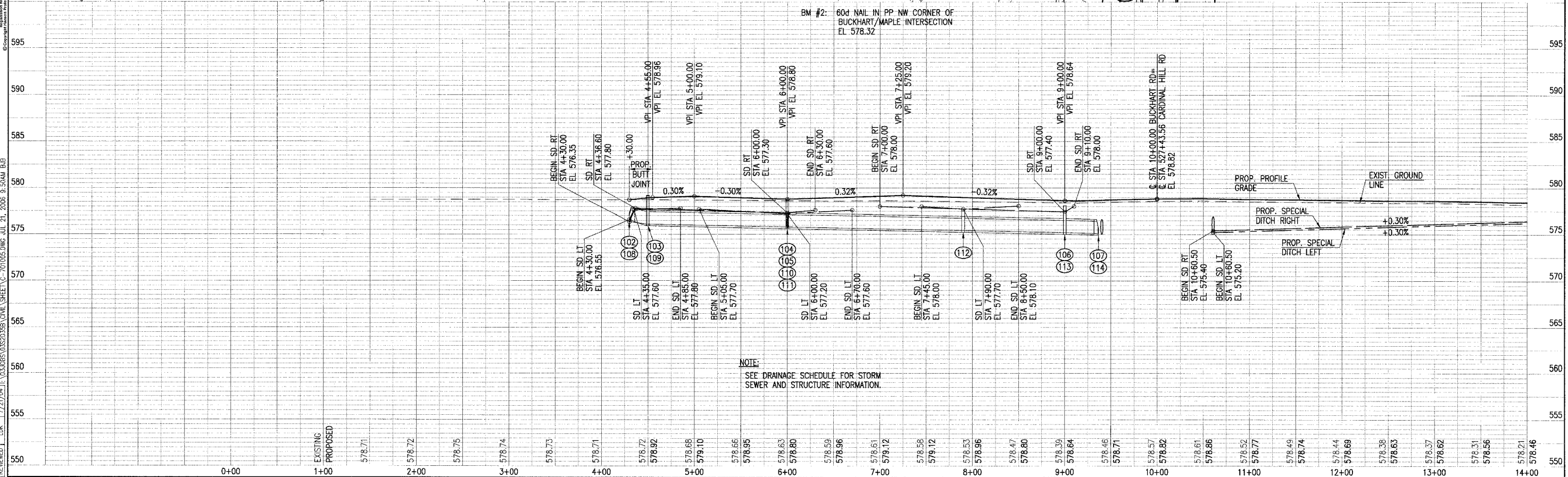
FAU. RITE.	SECTION	COUNTY	TOTAL SHEETS	SHEET NO.
8075	03-00167-04-FP	SANGAMON	109	31
STA. 4+30	TO STA. 14+00			
FED. ROAD DIST. NO.	ILLINOIS	FED. AID PROJECT		



- NOTES:**
- SAWCUT EXISTING PAVEMENT
  - PROPOSED BUTT JOINT. SEE SHEET 38 FOR DETAIL.
  - MANHOLE TO BE ADJUSTED EXIST. RIM EL 577.59 INVERT 572.41 NEW RIM EL 579.30
  - PROP. STORM SEWER (TYP) SEE DRAINAGE SCHEDULES
- CURVE #4**
- P.I. STA 16+36.88  
 $\Delta = 5^\circ 25' 37''$  R  
 $D_a = 00^\circ - 31' - 33''$   
 $T = 516.31'$   
 $R = 10894.00'$   
 $L = 1031.84'$   
 $E = 12.23'$   
 P.C. STA 11+20.57  
 P.T. STA 21+52.41  
 S.E. = NONE



DATE	BY	REVISION
3/15/04	...	...
7/22/04	...	...
7/27/04	...	...



**NOTE:**  
 SEE DRAINAGE SCHEDULE FOR STORM SEWER AND STRUCTURE INFORMATION.

BUCKHART ROAD/MAIN STREET