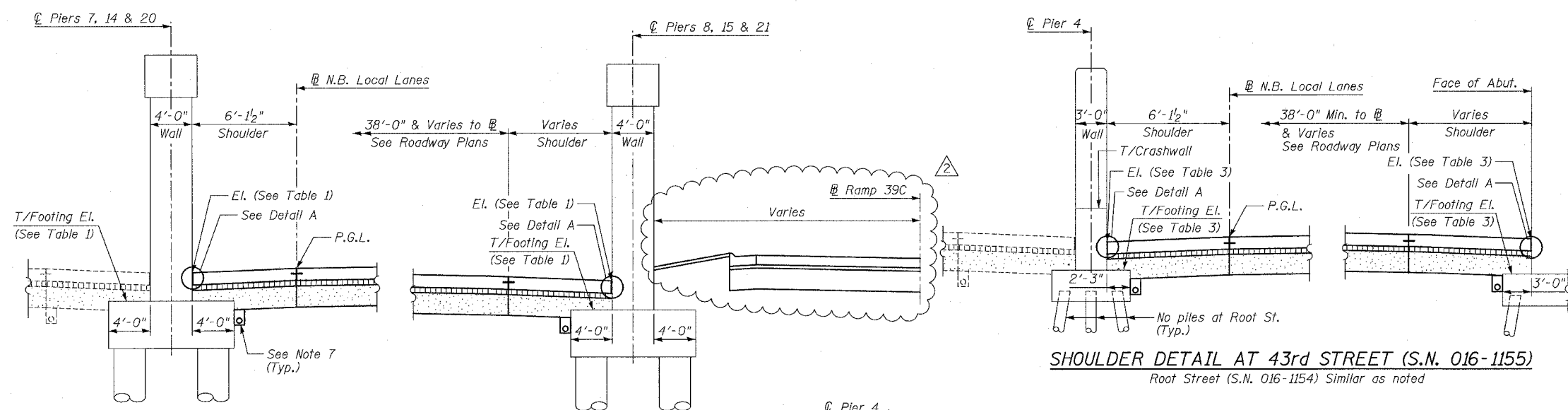
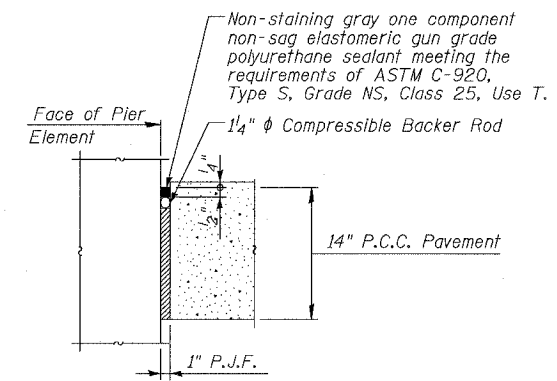


F.A.I.	SECTION	COUNTY	TOTAL SHEETS	SHEET NO.
94/90		COOK	565	354
STA.	TO STA.			
FED. ROAD DIST. NO.	ILLINOIS	FED. AID PROJECT		
62301 • (2021-922 PT2 ETC 2324.6-1P) R-10				

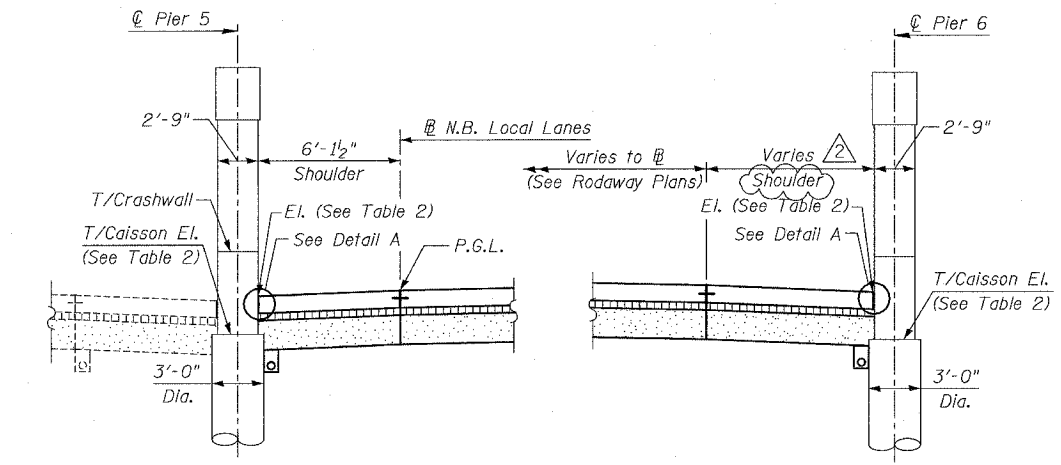


**SHOULDER DETAIL AT 43rd STREET (S.N. 016-1155)**  
Root Street (S.N. 016-1154) Similar as noted

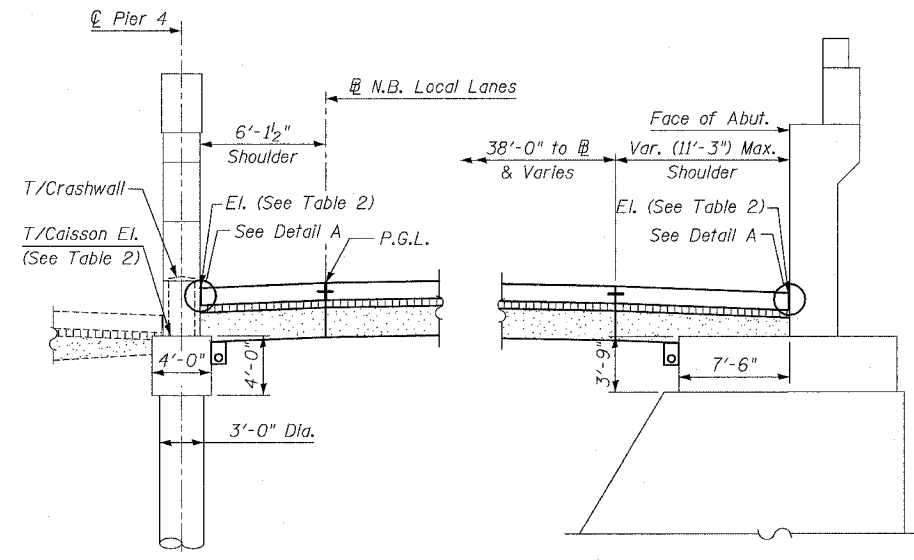


**DETAIL A**  
Cost of P.J.F., Backer Rod and sealant included with PCC Shoulder

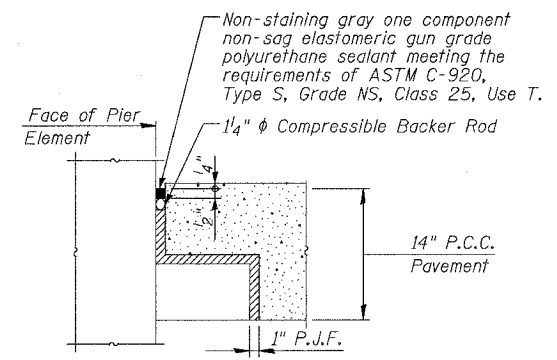
**SHOULDER DETAIL AT OVERHEAD RAILROAD**  
Near 40th Street (S.N.'s 016-0138, 0139 & 0140)



**SHOULDER DETAIL AT OVERHEAD BRIDGES**  
For 31st Street (S.N. 016-1159)  
33rd Street (S.N. 016-1158)  
35th Street (S.N. 016-1160)



**SHOULDER DETAIL AT 39th STREET (S.N. 016-0398)**



**DETAIL B**  
Cost of P.J.F., Backer Rod and sealant included with PCC Shoulder

**TABLE 1**

PIER	T/FOOTING EL.	T/SHOULDER EL.	
		MAX.	MIN.
7	-1.37	0.6	0.5
8	-1.44	0.6	0.5
14	-0.57	1.3	1.2
15	-0.87	1.5	1.4
20	-2.66	-0.4	-0.7
21	-2.76	-1.0	-1.5

**TABLE 2**

LOCATION	PIER	T/CAISSON EL.	T/SHOULDER EL.	
			MAX.	MIN.
31st St.	5	-6.44	-4.4	-4.7
	6	-5.64	-4.8	-5.0
33rd St.	5	-5.36	-3.6	-3.8
	6	-4.97	-3.9	-4.1
35th St.	5	-3.89	-1.7	-2.0
	6	-3.69	-1.6	-1.8
39th St.	4	-11.30	-5.7	-6.2
	E. Abut.	-8.25	-5.4	-6.2

**TABLE 3**

LOCATION	PIER	T/FOOTING EL.	T/SHOULDER EL.	
			MAX.	MIN.
Root St.	4	-8.0	-3.9	-4.5
	Abut	-8.0	-4.0	-4.5
43rd St.	4	-7.0	-4.4	-5.0
	Abut	-7.0	-4.4	-4.9

- Notes:
- See Typical Sections for Composition of Exist. & Prop. Pavement.
  - All views looking North.
  - Contractor shall use caution during pavement removal and excavation operations around existing overhead bridge foundations.
  - Top of Rock El. at Root Street is approx. El. -12.0
  - All dimensions at right angles to Expressway.
  - Use Detail B where pavement encroaches within bridge foundation.
  - Adjust underdrain location to clear foundation as directed by the Engineer.
  - See Roadway Plans and Details for locations of Single Face Barriers in front of bridge piers. Eliminate backer rod and sealant at these locations and adjust details as directed by the Engineer.

**LEGEND**

- Concrete Pavement
- Stabilized Sub-base
- Sub-base Granular material

**REVISIONS**

NAME	DATE
ADDENDUM 2	8/04/06

**RDT-21**

ILLINOIS DEPARTMENT OF TRANSPORTATION  
F.A.I. 94/90 (DAN RYAN EXPRESSWAY)  
GARFIELD BLVD TO 31ST STREET (NB LOCAL LANES)  
**ROADWAY DETAILS**  
**PAVEMENT DETAILS AT**  
**CROSS STREET BRIDGES**

SCALE: NTS  
DATE: JUNE 9, 2006

DRAWN BY: MTR  
CHECKED BY: BLU

BOWMAN, BARRETT & ASSOCIATES INC.  
CONSULTING ENGINEERS  
Chicago, Illinois  
312.228.0100  
www.bbainc.com

8/4/2006 2:44 PM