

F.A.I. RTE.	SECTION	COUNTY	TOTAL SHEETS	SHEET NO.
90/94		COOK	247	1
60A63 • (1919.15, 2021-922 PT1 & PT2) R-2				

INDEX OF SHEETS
FOR INDEX OF SHEETS, SEE SHEET NO. 2

DESIGN NUMBER
D-91-419-01

PROJECT LOCATED IN CITY OF CHICAGO

DESIGN DESIGNATION
SB LOCAL LANES: 6042 (35) URBAN INTERSTATE 264.46 (CRC-30)

	ADT	DESIGN	POSTED
	(2020)	SPEED	SPEED
SB LOCAL LANES	122,330	60	45

STATE OF ILLINOIS
DEPARTMENT OF TRANSPORTATION
DIVISION OF HIGHWAYS

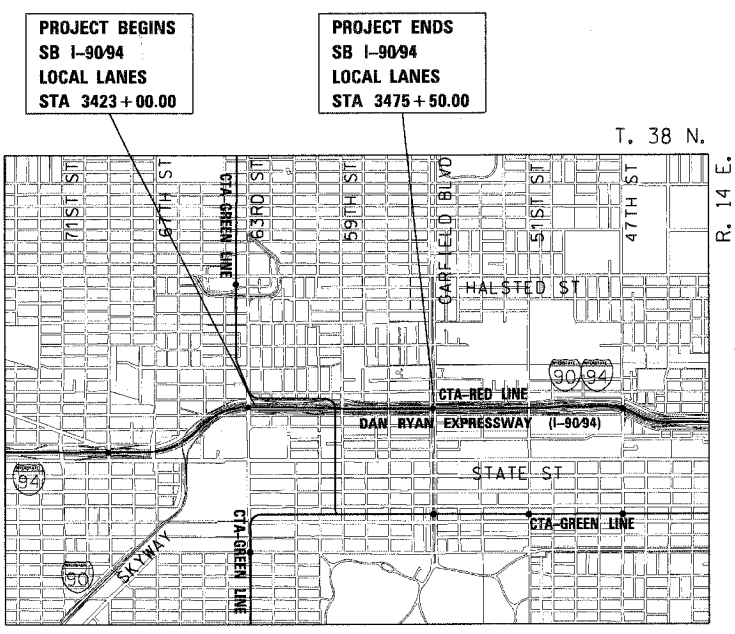
**PLANS FOR PROPOSED
FEDERAL AID HIGHWAY**

F.A.I. ROUTE 90/94 (DAN RYAN EXPRESSWAY)
SECTION (1919.15, 2021-922 PT1 & PT2) R-2
PROJECT **ACIM-000S(516)** [△]
RECONSTRUCTION OF SOUTHBOUND LOCAL LANES
BETWEEN 63RD STREET AND GARFIELD BLVD
COOK COUNTY
C-91-091-06



	SIGNATURE <i>John A. Lukowick</i>
	DATE <i>6-5-2006</i>
	EXPIRES <i>11-30-2007</i>
	SHEET <i>1-187, 264-324</i> TO
	SIGNATURE <i>Robert M. Goveia</i>
	DATE <i>06-05-2006</i>
	EXPIRES <i>11-30-2007</i>
	SHEET _____ TO
	SIGNATURE <i>James P. Coleman</i>
	DATE <i>06-05-2006</i>
	EXPIRES <i>11-30-2007</i>
	SHEET <i>133</i> TO <i>160</i>
	SIGNATURE <i>M. J. Pregon</i>
	DATE <i>6-5-2006</i>
	EXPIRES <i>11-30-2006</i>
	SHEET <i>175</i> TO <i>189</i>

69TH STREET SOUTHWEST RETAINING WALL
BRIDGE SN 016-0142 (CONRAIL BRIDGE)
BRIDGE SN 016-1148 (METRA BRIDGE)



LOCATION MAP
GROSS LENGTH OF PROJECT = 5,250 FT (0.994 MILES)
NET LENGTH OF PROJECT = 5,250 FT (0.994 MILES)

STATE OF ILLINOIS
DEPARTMENT OF TRANSPORTATION
DIVISION OF HIGHWAYS

SUBMITTED *June 1, 2006*

Diane M. O'Keefe / *cd*
DEPUTY DIRECTOR OF HIGHWAYS, REGION ENGINEER

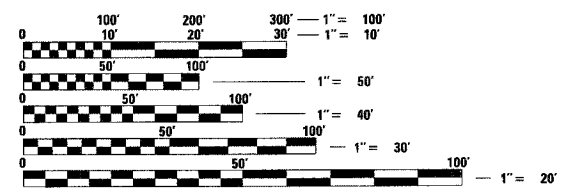
June 30, 2006
Mike June
ENGINEER OF DESIGN AND ENVIRONMENT

June 30, 2006
Milton L. Seo P.E.
DIRECTOR OF HIGHWAYS, CHIEF ENGINEER

CTE | AECOM

**PRINTED BY THE AUTHORITY
OF THE STATE OF ILLINOIS**

DISTRICT ONE DESIGN/CONSULTANT SERVICES PROJECT MANAGER
RAJENDRA SHAH (847) 705-4555



FULL SIZE PLANS HAVE BEEN PREPARED USING STANDARD ENGINEERING SCALES. REDUCED SIZED PLANS WILL NOT CONFORM TO STANDARD SCALES. IN MAKING MEASUREMENTS ON REDUCED PLANS, THE ABOVE SCALES MAY BE USED.

BEFORE EXCAVATING CALL:
CHICAGO UTILITY ALERT NETWORK
(312) 744-7000
CONTRACT NO. 60A63

△ Rev.