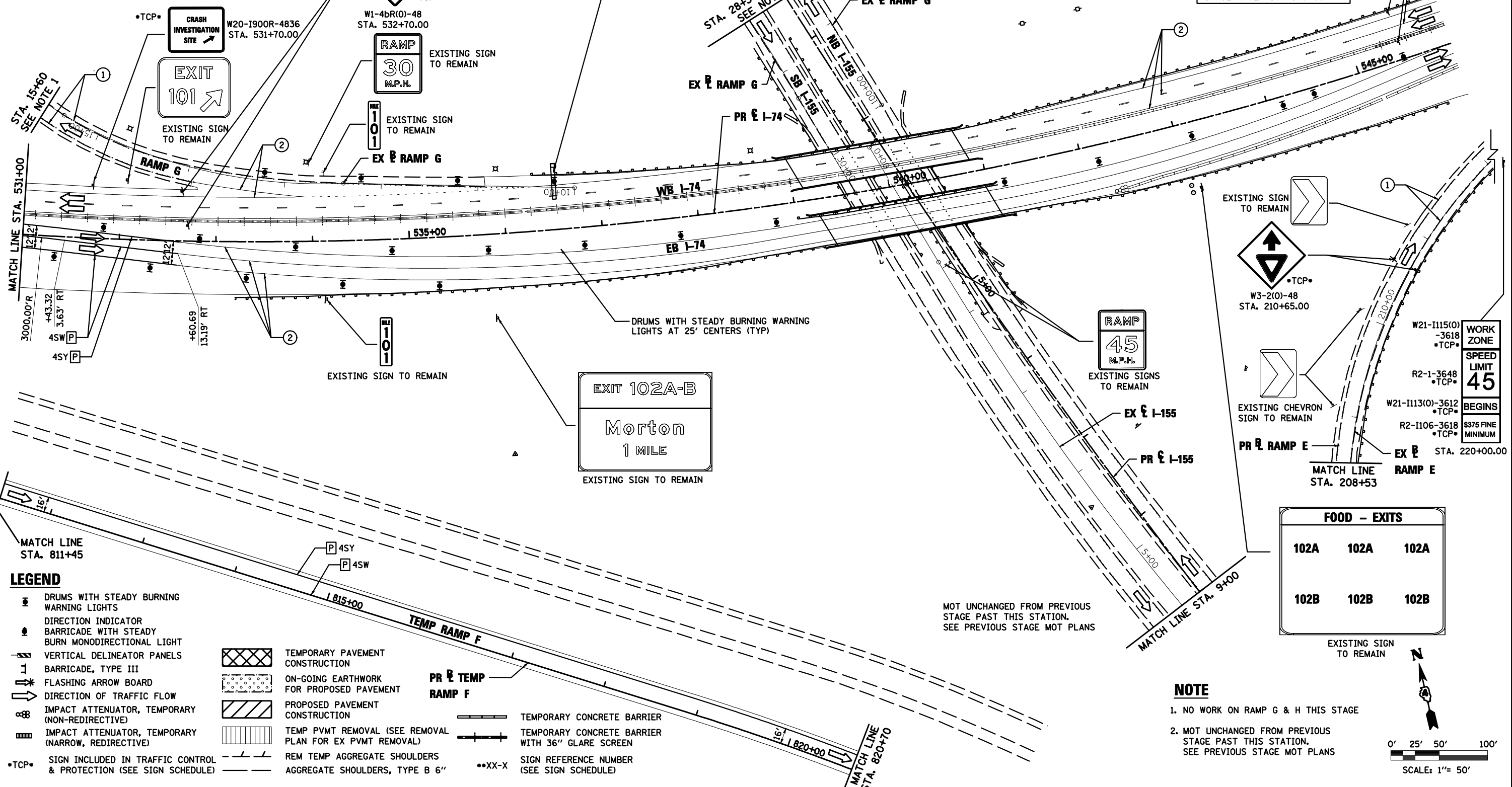


PAVEMENT MARKING LEGEND

- ① EXISTING PAVEMENT MARKING
- ② PAVEMENT MARKING FROM PREVIOUS STAGE
- ③ PROPOSED PAVEMENT MARKING IN PLACE (SEE PROPOSED PAVEMENT MARKING PLAN)
- T PAVEMENT MARKING TAPE, TYPE III
- P POLYUREA PAVEMENT MARKING TYPE II
- 4SW 4" SOLID WHITE
- 4SY 4" SOLID YELLOW
- 4SY 4" SOLID DOUBLE YELLOW (11" C-C)
- 4KW 4" SKIP-DASH WHITE (30' SKIP, 10' DASH)
- 4DW 4" DOTTED WHITE (9' SKIP, 3' DASH)
- 8SW 8" SOLID WHITE
- 12SW 12" SOLID WHITE @ 20' SPACING
- 12SY 12" SOLID YELLOW @ 20' SPACING
- 24SW 24" SOLID WHITE STOP BAR
- LSW LETTERS AND SYMBOLS, WHITE

PAVEMENT MARKING AND ADVANCED SIGNING TO REMAIN UNCHANGED FROM PREVIOUS STAGE AFTER STA 546+00



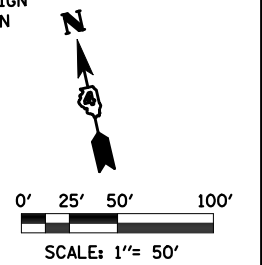
LEGEND

- DRUMS WITH STEADY BURNING WARNING LIGHTS
- ▲ DIRECTION INDICATOR
- BARRICADE WITH STEADY BURN MONODIRECTIONAL LIGHT
- ▨ VERTICAL DELINEATOR PANELS
- ⊥ BARRICADE, TYPE III
- ⬆ FLASHING ARROW BOARD
- ➡ DIRECTION OF TRAFFIC FLOW
- ⊘ IMPACT ATTENUATOR, TEMPORARY (NON-REDIRECTIVE)
- ⊘ IMPACT ATTENUATOR, TEMPORARY (NARROW, REDIRECTIVE)
- TCP• SIGN INCLUDED IN TRAFFIC CONTROL & PROTECTION (SEE SIGN SCHEDULE)
- ▨ TEMPORARY PAVEMENT CONSTRUCTION
- ▨ ON-GOING EARTHWORK FOR PROPOSED PAVEMENT
- ▨ PROPOSED PAVEMENT CONSTRUCTION
- ▨ TEMP PVMT REMOVAL (SEE REMOVAL PLAN FOR EX PVMT REMOVAL)
- ▨ REM TEMP AGGREGATE SHOULDERS
- ▨ AGGREGATE SHOULDERS, TYPE B 6"
- ▬ TEMPORARY CONCRETE BARRIER
- ▬ TEMPORARY CONCRETE BARRIER WITH 36" GLARE SCREEN
- XX-X SIGN REFERENCE NUMBER (SEE SIGN SCHEDULE)

FOOD - EXITS		
102A	102A	102A
102B	102B	102B

NOTE

1. NO WORK ON RAMP G & H THIS STAGE
2. MOT UNCHANGED FROM PREVIOUS STAGE PAST THIS STATION. SEE PREVIOUS STAGE MOT PLANS



FILE NAME = D468620-shr-staging09 174-02B.dgn	DESIGNED - HTL	REVISED -
USER NAME = TERRA	DRAWN - JPS	REVISED -
PLOT DATE = 7/16/2012	CHECKED - DA/LVA	REVISED -
	DATE - 7/20/2012	REVISED -



STATE OF ILLINOIS
DEPARTMENT OF TRANSPORTATION

MAINTENANCE OF TRAFFIC
STAGE 2B

SCALE: SHEET NO. 14 OF 17 SHEETS STA. 531+00 TO STA. 546+00

F.A.I. RTE.	SECTION	COUNTY	TOTAL SHEETS	SHEET NO.
	90-14R(14HB-4,14,14HB)/BR	TAZEWELL	2433	683
CONTRACT NO. 68620			ILLINOIS FED. AID PROJECT	