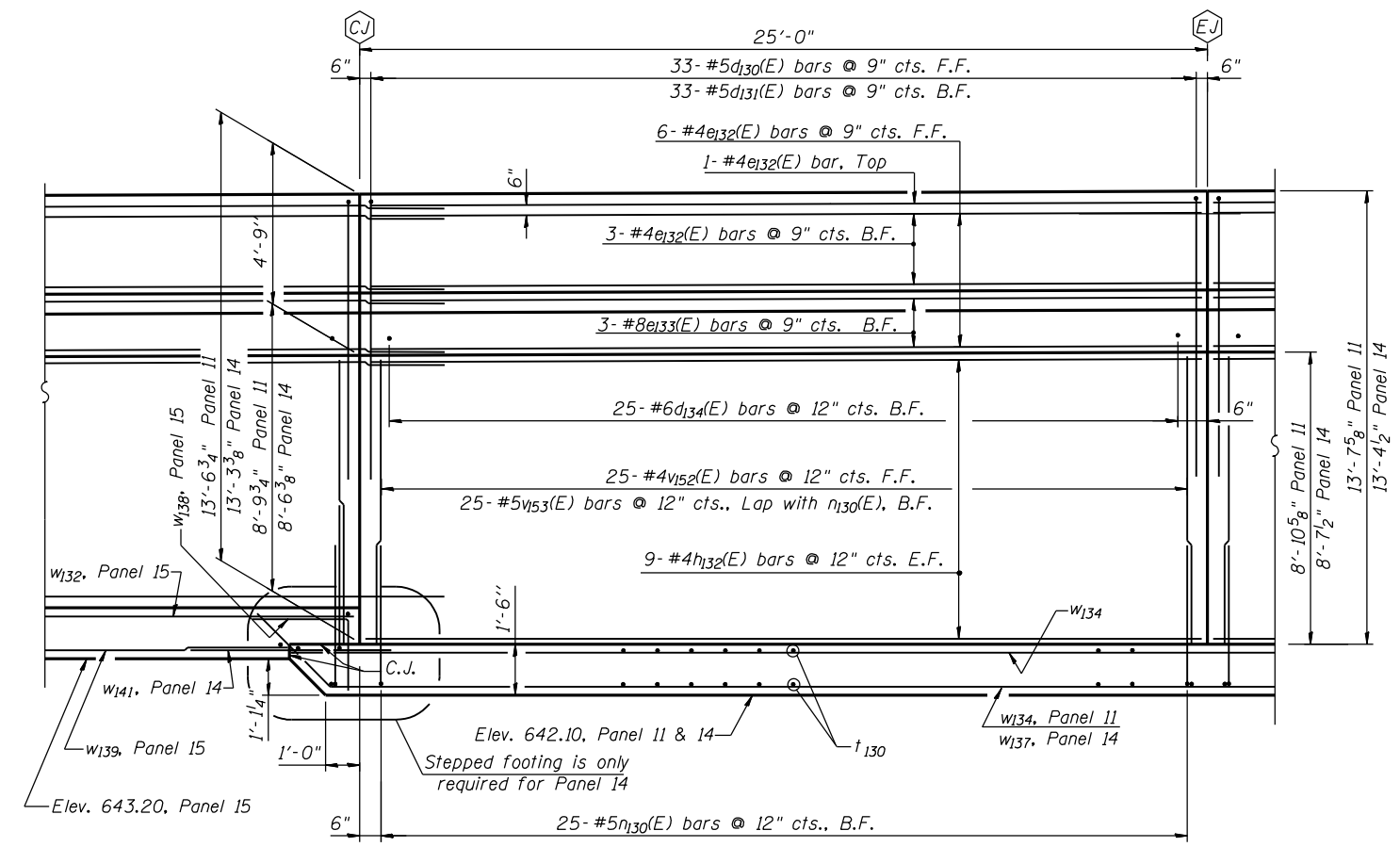
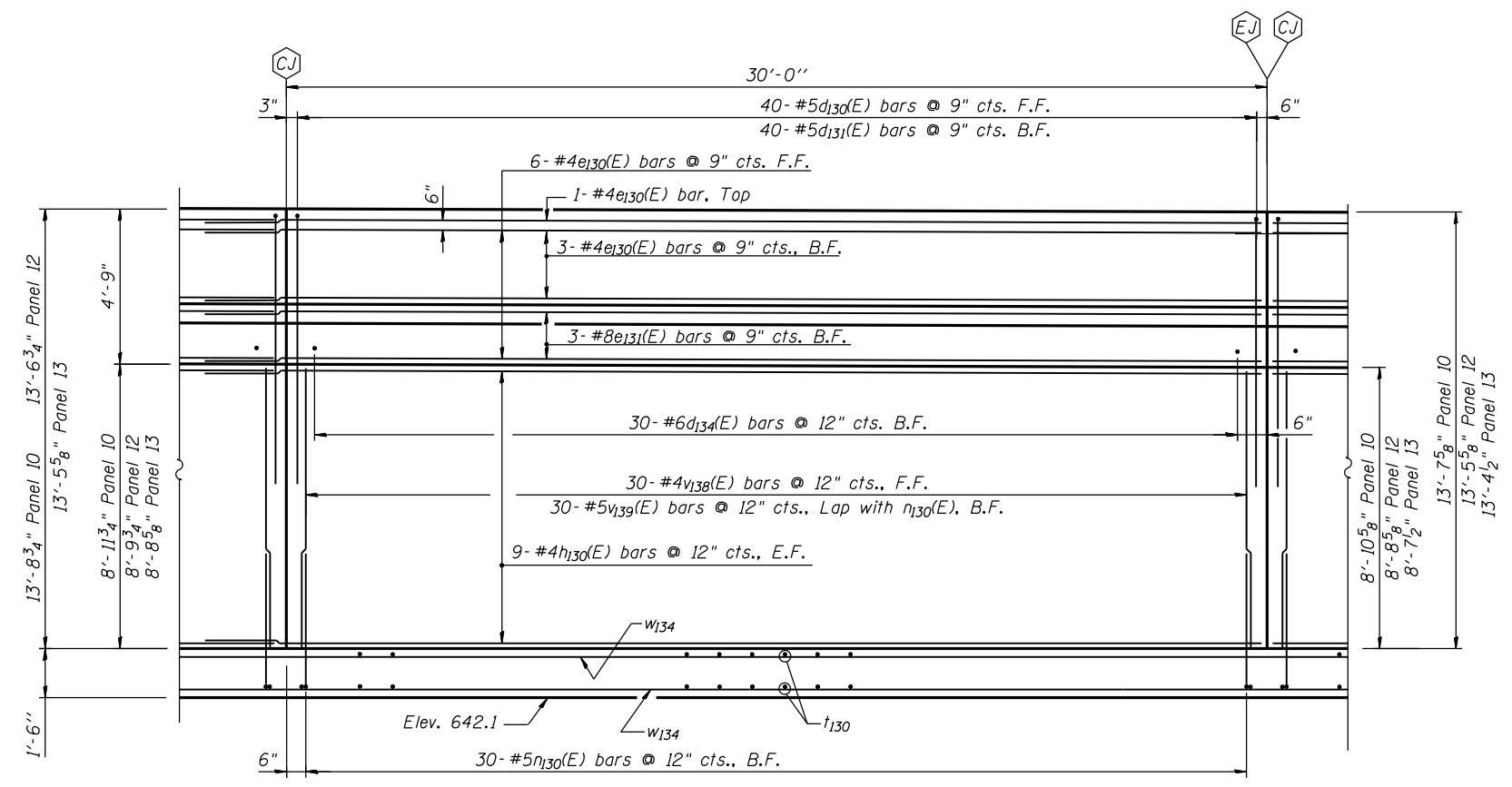


PANEL 8 LOOKING NORTH
PANEL 9 LOOKING SOUTH



PANELS 11 & 14 LOOKING SOUTH



PANELS 10, 12 & 13 LOOKING NORTH

NOTES:

- See DETAIL Y on Sheet SA7 for additional reinforcement required around Pipe Sleeve thru Wall Panel 9.
- Rebar splices in footing under Panels 9 thru 13 are not shown.

P:\105200\20103003\cadd\structural\dwg\refwall_final\00\160133-sa05-e12.dgn
 6/14/2012 6:39:18 PM



USER NAME =	DESIGNED - R.K.-Z., 6/15/2012	REVISED -
PLOT SCALE =	CHECKED - J.J.G., 6/15/2012	REVISED -
PLOT DATE =	DRAWN - R.K.-Z., 6/15/2012	REVISED -
	CHECKED - J.J.G., 6/15/2012	REVISED -

STATE OF ILLINOIS
DEPARTMENT OF TRANSPORTATION

WALL PANEL ELEVATIONS II
STRUCTURE NUMBER 045-W014

SHEET NO. SA5 OF 11 SHEETS

F.A.P. RTE.	SECTION	COUNTY	TOTAL SHEETS	SHEET NO.
349	(10 & 11VB) R-3	KANE	507	342
STA. 1252+00.00			CONTRACT NO. 60133	
ILLINOIS FED. AID PROJECT				