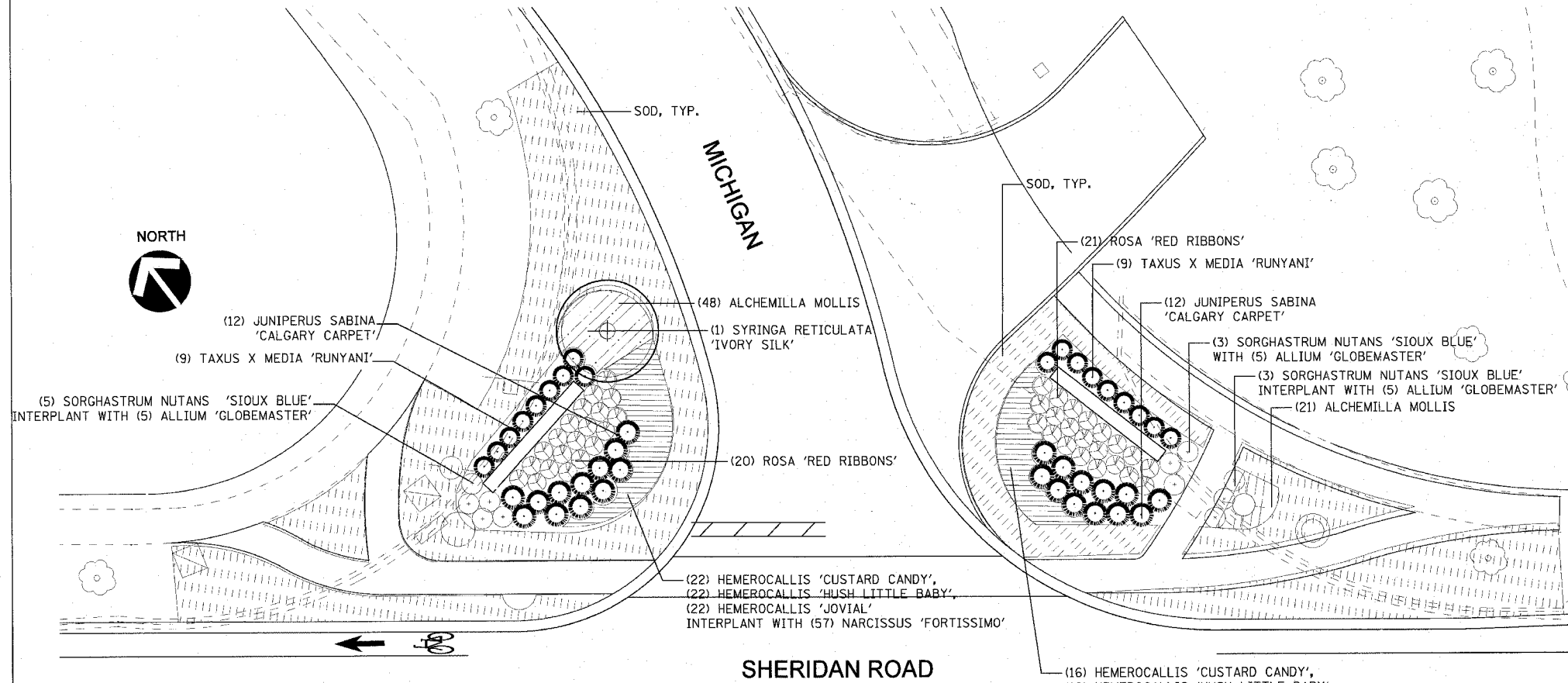


F.A.U. RTE.	SECTION	COUNTY	TOTAL SHEETS	SHEET NO.
3509	00-00173-00-FP	COOK	246	139
STA.		TO STA.		
FED. ROAD DIST. NO. 7 ILLINOIS FED. AID PROJECT				

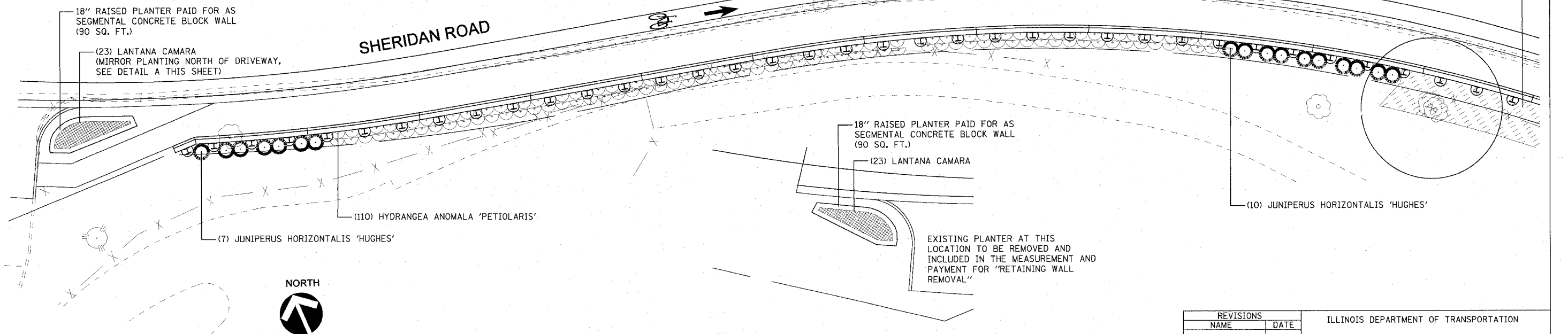
SHERIDAN ROAD - SHEET TWO PLANT LIST

KEY	BOTANICAL NAME	COMMON NAME	SIZE	SPACING	TOTALS
ORNAMENTAL TREES					
	SYRINGA RETICULATA 'IVORY SILK'	IVORY SILK JAPANESE TREE LILAC	8'-10' B/B	SEE PLANS	1
EVERGREEN SHRUBS					
	JUNIPERUS HORIZONTALIS 'HUGHES'	HUGHES SPREADING JUNIPER	#5	48" O.C.	7
	JUNIPERUS SABINA 'CALGARY CARPET'	CALGARY CARPET SAVIN JUNIPER	#5	3'-6" O.C.	24
	TAXUS X MEDIA 'RUNYANI'	RUNYAN SPREADING YEW	20" HT. B/B	36" O.C.	18
SHRUBS					
	ROSA 'RED RIBBONS'	RED RIBBONS SHRUB ROSE	#3	30" O.C.	41
PERENNIALS AND ORNAMENTAL GRASSES					
	ALCHEMILLA MOLLIS	LADY'S MANTLE	#1 POT	18" O.C.	69
	HEMEROCALLIS 'GUSTARD CANDY'	GUSTARD CANDY DAYLILY	#1 POT	18" O.C.	38
	HEMEROCALLIS 'HUSH LITTLE BABY'	HUSH LITTLE BABY DAYLILY	#1 POT	18" O.C.	38
	HEMEROCALLIS 'JOVIAL'	JOVIAL DAYLILY	#1 POT	18" O.C.	38
	SORGHASTRUM NUTANS 'SIOUX BLUE'	INDIAN GRASS	#2 POT	36" O.C.	11
ANNUALS					
	LANTANA CAMARA	COMMON VERBENA	1 QT.	12" O.C.	46
VINES					
	HYDRANGEA ANOMALA 'PETIOLARIS'	CLIMBING HYDRANGEA	#2	3' O.C.	110
BULBS					
	ALLIUM 'GLOBEMASTER'	ORNAMENTAL ONION	DN II	VARIABLE	15
	NARCISSUS 'FORTISSIMO'	FORTISSIMO DAFFODIL	DN II	VARIABLE	114



GILLSON PARK ENTRANCE

SCALE: 1"=10'



RETAINING WALL AT BAHAI

SCALE: 1"=10'

PLANTING PLAN

SCALE: 1"=10'

REVISIONS	
NAME	DATE

ILLINOIS DEPARTMENT OF TRANSPORTATION

PLANTING PLAN
SHERIDAN ROAD
GILLSON PARK ENTRANCE AND BAHAI RETAINING WALL

DATE: 7/13/07
DRAWN BY: AT/MS
CHECKED BY: JE

HORIZ. 1"=10'

DLK THE FINE ARTS BUILDING
410 S. MICHIGAN AVENUE, SUITE 400
CHICAGO, ILLINOIS 60605
PHONE: 312.322.0811

1651 PERIMETER DRIVE, SUITE 1025
SCHWABERDING, ILLINOIS 60173
(847) 585-8600

TranSystems