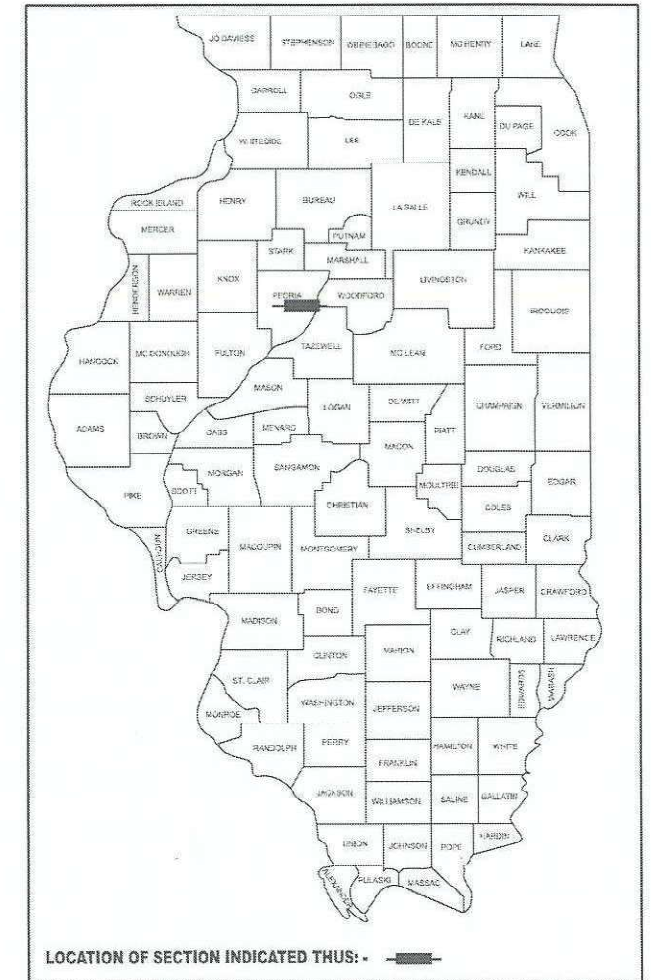


F.A.P. RTE.	SECTION	COUNTY	TOTAL SHEETS	SHEET NO.
671	11RS-6;GRS-3;10RS-9	PEORIA	27	1
		ILLINOIS	CONTRACT NO. 68J62	

D-94-086-24



**INDEX OF SHEETS**

- 1 COVER SHEET
- 2-3 GENERAL & JOB SPECIFIC NOTES
- 4-7 SUMMARY OF QUANTITIES
- 8-12 SCHEDULE OF QUANTITIES
- 13 LINE DIAGRAM
- 14 TYPICAL SECTIONS
- 15-19 PLAN SHEETS
- 20-21 TRAFFIC SIGNAL PLANS
- 22-27 DISTRICT CADD STANDARDS

**HIGHWAY STANDARDS**

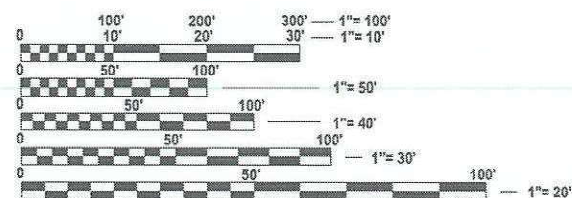
420001-10	701311-03
606001-08	701501-06
606301-04	701502-09
630001-13	701701-10
631011-10	701901-10
701201-05	780001-05
701301-04	781001-04

**DISTRICT STANDARDS**

- 602401
- 630101
- 635003
- 780001

**DESIGN DESIGNATION**

IL 8 (FARMINGTON RD.)  
 MINOR ARTERIAL  
 ADT = 12,200 (2023)  
 MU = 0.6% (2023)  
 SU = 2.5% (2023)



FULL SIZE PLANS HAVE BEEN PREPARED USING STANDARD ENGINEERING SCALES. REDUCED SIZED PLANS WILL NOT CONFORM TO STANDARD SCALES. IN MAKING MEASUREMENTS ON REDUCED PLANS, THE ABOVE SCALES MAY BE USED.

J.U.L.I.E.  
 JOINT UTILITY LOCATION INFORMATION FOR EXCAVATION  
 1-800-892-0123  
 OR 811

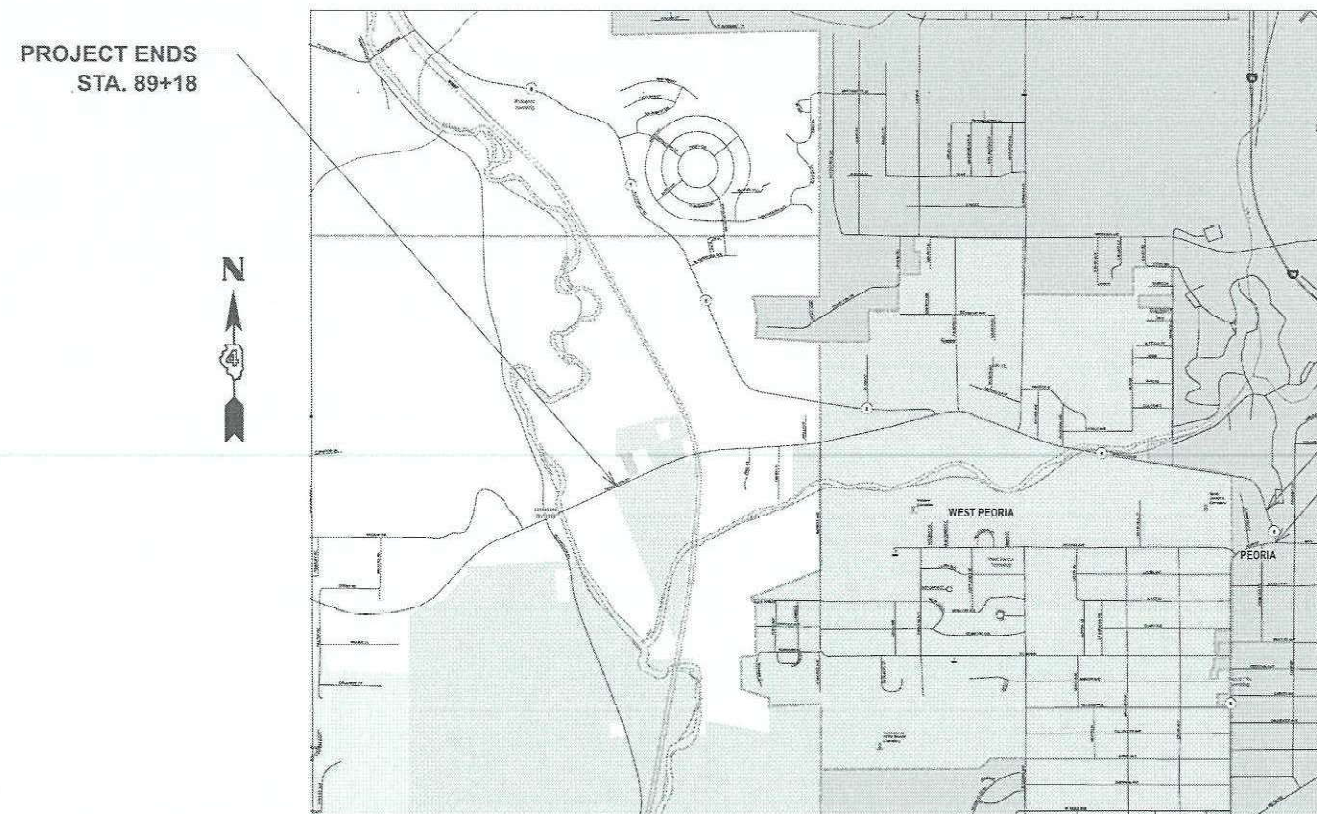
PROJECT ENGINEER: REBECCA MARRUFFO 309-671-3394  
 PROJECT MANAGER: RAYMOND SAMARA 309-369-7100

CATALOG NO. 036569-00D  
 CONTRACT NO. 68J62

# PROPOSED HIGHWAY PLANS

FAU ROUTE 6658 / FAP ROUTE 671 (IL 8/FARMINGTON RD.)  
 SECTION 11RS-6;GRS-3;10RS-9  
 3P RESURFACING  
 PEORIA COUNTY

C-94-114-24



PROJECT ENDS  
 STA. 89+18

STA. EQUATION:  
 STA. 104+84 (BK)  
 = STA. 5+15 (AH)

PROJECT BEGINS  
 STA. 99+98

PROJECT DESCRIPTION:  
 RESURFACING ON IL 8 (FARMINGTON RD.)  
 FROM MAIN STREET TO E. OF KICKAPOO CREEK  
 RD. PROJECT INCLUDES GUARDRAIL, PAVEMENT  
 MARKING, AND RESURFACING S.N. 072-0056.

STATE OF ILLINOIS  
 DEPARTMENT OF TRANSPORTATION

SUBMITTED *May 22 2025*  
*Kenal A Garnett, P.E.*  
 REGIONAL ENGINEER

JUNE 27 2025  
*Scott A. [Signature]*  
 ENGINEER OF DESIGN AND ENVIRONMENT

JUNE 27 2025  
*[Signature]*  
 DIRECTOR OF HIGHWAYS PROJECT IMPLEMENTATION

**PRINTED BY THE AUTHORITY  
OF THE STATE OF ILLINOIS**

GROSS LENGTH = 8889 FT. = 1.680 MILES  
 NET LENGTH = 8739 FT. = 1.66 MILES

GENERAL NOTES

107.00 COMMITMENTS

Commitments are not to be altered without the written approval of all parties to which the commitment was made.

No commitments have been made on this project.

107.09A CONSECUTIVE SIDE STREET (ROAD) CLOSURE - PROHIBITED

1. No two consecutive side streets (roads) may be closed at the same time during construction. The Contractor must alternate streets (roads).
2. Adjacent sideroads will not be closed simultaneously. BLR Standard 21 shall be used for all local road closures without any entrances within the closed area. BLR Standard 22 can be used where it is necessary to allow local traffic access.

204.00 ENVIRONMENTAL REVIEWS

Prior to the use of any proposed borrow areas, use areas (temporary access roads, detours, run-arounds, etc.) and/or waste areas, the Contractor shall file the required environmental resource request surveys according to Section 107.22 of the Standard Specifications. These surveys are required in order for the Department to conduct cultural and biological resource surveys for the proposed site.

The required environmental resource documentation shall include the following:

- \* BDE Form 2289 (Borrow Site Review)
- \* BDE Form 2290 (Waste/Use Area Review)
- \* A location map showing the size limits and location of the use area
- \* Color photographs depicting the use area
- \* Borrow Area Entry Agreement form - D4 PI0101

Prior to any waste materials being removed from the construction site the required environmental resource surveys shall be obtained and filed by the Contractor. Excess waste products removed from the construction site shall be disposed of as required in Section 202.03 of the Standard Specifications.

Any protruding metal bars shall be removed prior to the disposal of broken concrete at approved disposal sites.

Please note that a minimum of four weeks shall be allowed for the District to obtain the required waste site environmental clearances and six weeks for the required borrow site environmental clearances.

351.08 AGGREGATE FOR DRIVEWAY REPLACEMENT

The material used for construction of permanent aggregate driveways shall be gravel or crushed stone, as directed by the Engineer, to replace in kind the existing aggregate driveways.

No additional compensation shall be provided for this requirement but shall be considered as included in the cost of the pay item for the aggregate as specified on the plans.

406.01 BRIDGE OVERLAY NOTIFICATION

After placement of the bridge deck overlay, the Resident Engineer shall notify the District Bridge Maintenance Engineer of the "as constructed" milling depth and overlay thickness for updating the Illinois Highway Information System.

406.05 POLYMERIZED BITUMINOUS MATERIALS (TACK COAT) RATES

Surface Type	Residual Rate
Milled (HMA or PCC)	0.08 lb / sq ft
Existing Pavement	0.08 lb / sq ft
Fog Coat (between lifts)	0.08 lb / sq ft

406.18

BUTT JOINT CUTTING TIME RESTRICTION

Butt joints shall not be milled more than three (3) days prior to placement of the HMA surface course.

406.19

PAVING SURFACE COURSE

Continuous paving operations on the main roadway shall be maintained at all times during the construction of the hot-mix asphalt surface. No interruptions for side roads, entrances, turn lanes, etc. will be allowed.

503.00

CROSSING EXISTING STRUCTURES WITH EQUIPMENT

SN 072-0056 may be crossed with the empty MTD with the maximum gross weight restriction of 40 tons. Any structures not listed above shall be verified by the resident prior to beginning work.

606.00

MEDIAN ISLAND NOSES

When constructing median and island noses the following criteria should be followed:

- \* Barrier curb shall be used to construct noses when the median or island surrounds a mast arm or other non-breakaway foundation.
- \* Ramped noses shall be used on medians or islands with breakaway posts.

701.01

ADDITIONAL SUPPLEMENTAL TRAFFIC CONTROL

The Department reserves the right at any time to add additional Traffic Control Systems or devices within the active contract limits, by means of an additional contract. All terms of Article 105.08 of the Standard Specifications shall be followed by each Contractor.

780.00

NO PASSING ZONE VERIFICATION

The resident shall contact Operations to verify the location of no passing zones prior to placement of centerline striping.

MODEL: General Notes (Sheet)  
FILE NAME: c:\p\work\paved\green\dmd1089745\468xxx-sht-GenNotes.dgn

USER NAME = david.green	DESIGNED -	REVISED -
	DRAWN -	REVISED -
	CHECKED -	REVISED -
PLOT DATE = 5/15/2025	DATE -	REVISED -

**STATE OF ILLINOIS  
DEPARTMENT OF TRANSPORTATION**

**GENERAL NOTES**

SCALE: SHEET 1 OF 2 SHEETS STA. TO STA.

F.A.P. RTE.	SECTION	COUNTY	TOTAL SHEETS	SHEET NO.
671	11RS-6;GRS-3;10RS-9	PEORIA	27	2
CONTRACT NO. 68J62				
		ILLINOIS	FED. AID PROJECT	

MIX REQUIREMENTS:

The following mixture requirements are applicable for this project:						
Location(s):	Mainline	Mainline	Mainline			
Mixture Use(s):	Polymer Surface 1.75"	Polymer Level Binder 1"	Incidental Surface			
AC/PG:	SBS or SBR 70-28	SBS or SBR 70-22	PG 58-28			
Design Air Voids:	4.0% @ N=50	4.0% @ N=50	4.0% @ N=50			
Mixture Composition: (Mixture Gradation)	IL 9.5	IL 4.75	IL 9.5			
Friction Aggregate:	Mix D	N/A	Mix C			
Quality Management Program:	PFP	PFP	QCQA			
MTD:	YES	YES	NO			

Note: 1) Individual lift thickness of each mix type will be no less than 3 times nominal maximum aggregate size and no more than 6 times nominal maximum aggregate size, unless otherwise approved by the Engineer.  
 2) For design purposes, mixture weight for all mixes is determined to be 112.0 lb/s.y./in., unless otherwise noted.  
 3) Sublot sizes for PFP and QCP mixes will be 1000 tons, unless otherwise agreed to by the Engineer and the paving contractor.

JOB SPECIFIC NOTES

- Drop offs between traffic lanes during the milling and overlay operations shall be in accordance with article 701.07 of the Standard Specifications.
- Proposed aggregate shoulders are due to low spots in existing aggregate.
- Vertical holes shall be constructed in the proposed island pavement. The holes shall be 24 inches in diameter or 24 inches square and they shall be free of any obstruction, except earth, for a depth of 5 feet as directed by the Engineer. Any holes not used for the placement of signs shall be filled and compacted flush with the top of the island pavement. The top 3 inches of said compacted fill shall consist of a hot-mix asphalt mixture. All holes in which the sign posts are installed at the same time of this contract shall be similarly filled.

This work, including any required pavement removal necessary to construct the sign post holes, will not be paid for separately but shall be included in the contract unit price per Square Foot for ISLAND PAVEMENT REMOVAL AND REPLACEMENT.

- When flaggers are utilized within the intersections during any construction stage, signals shall be switched to flashing red to minimize confusion to motorists, and the Engineer shall be notified.

STATUS OF UTILITIES:

No utility conflicts have been found within the project limits. Utilities located within the ROW consist of:

COMPANY	CONTACT PERSON	CONTACT INFO
Ameren Illinois – Electric	Jon Reick	309-258-3901 jreick@ameren.com
Ameren Illinois – Gas	Zach Wilson	309-645-4458 zwilson@ameren.com
ATT – Distribution	Bill Conover	309-550-8043 wc2473@att.com
I3 Broadband		engineering@i3broadband.net
Illinois American Water	Charles Barton	309-258-9151 charles.barton@amwater.com
Bluebird	Jeremy Carr	309-713-6442 jeremy.carr@bluebirdnetwork.com
Greater Peoria Sanitary		engineering@gpsd.org
Pleasant Valley Water District	Joe Loftus	309-645-0707 pvpwd@comcast.net
Stratus Network	Tyler Evans	309-417-3291 tevens@stratusnet.com

MODEL: Detail (Sheet) - 1  
FILE NAME: c:\p\work\pav\pav\green\mtd1089745\ID468\xx-sht-Details.dgn

USER NAME = david.green	DESIGNED -	REVISED -
	DRAWN -	REVISED -
	CHECKED -	REVISED -
PLOT DATE = 5/22/2025	DATE -	REVISED -

STATE OF ILLINOIS  
DEPARTMENT OF TRANSPORTATION

MIX REQUIREMENTS, JOB SPECIFIC NOTES,  
& STATUS OF UTILITIES

SCALE: SHEET 2 OF 2 SHEETS STA. TO STA.

F.A.P. RTE.	SECTION	COUNTY	TOTAL SHEETS	SHEET NO.
671	11RS-6;GRS-3;10RS-9	PEORIA	27	3
CONTRACT NO. 68J62				
ILLINOIS FED. AID PROJECT				

CODE NO.	ITEM	UNIT	TOTAL QUANTITY	CONSTRUCTION CODE			
				PEORIA COUNTY 100% STATE	PEORIA COUNTY 93.3% STATE / 6.7% W. PEORIA	PEORIA COUNTY 93.3% STATE / 6.7% PEORIA	PEORIA COUNTY 100% STATE
				FRONTAGE ROAD	TRAFFIC SIGNALS	TRAFFIC SIGNALS	TRAFFIC SIGNALS
				0005 URBAN	0021 URBAN	0021 URBAN	0021 URBAN
40200100	AGGREGATE SURFACE COURSE, TYPE A	TON	64	64			
40600295	POLYMERIZED BITUMINOUS MATERIALS (TACK COAT)	POUND	68250	68250			
40600405	MATERIAL TRANSFER DEVICE	TON	5362	5362			
40600982	HOT-MIX ASPHALT SURFACE REMOVAL - BUTT JOINT	SQ YD	850	850			
40600990	TEMPORARY RAMP	SQ YD	1004	1004			
40603200	POLYMERIZED HOT-MIX ASPHALT BINDER COURSE, IL-4.75, N50	TON	1899	1899			
40604160	POLYMERIZED HOT-MIX ASPHALT SURFACE COURSE, IL-9.5, MIX "D", N50	TON	3464	3464			
40800050	INCIDENTAL HOT-MIX ASPHALT SURFACING	TON	979	979			
44000156	HOT-MIX ASPHALT SURFACE REMOVAL, 1 3/4"	SQ YD	940	940			
44000160	HOT-MIX ASPHALT SURFACE REMOVAL, 2 3/4"	SQ YD	39370	39370			
48101200	AGGREGATE SHOULDERS, TYPE B	TON	128	128			
60260100	INLETS TO BE ADJUSTED	EACH	1	1			
* 63000001	STEEL PLATE BEAM GUARDRAIL, TYPE A, 6 FOOT POSTS	FOOT	363	363			
* 63100045	TRAFFIC BARRIER TERMINAL, TYPE 2	EACH	1	1			

\*= SPECIALTY ITEM

MODEL: SOQ (Sheet)-1  
FILE NAME: c:\p\work\pwr\of\green\m\1089745\ID468xxx-shr-SOQ.dgn

USER NAME = david.green	DESIGNED -	REVISED -
	DRAWN -	REVISED -
	CHECKED -	REVISED -
PLOT DATE = 5/22/2025	DATE -	REVISED -

**STATE OF ILLINOIS  
DEPARTMENT OF TRANSPORTATION**

**SUMMARY OF QUANTITIES**

SCALE: SHEET 1 OF 4 SHEETS STA. TO STA.

F.A.P. RTE.	SECTION	COUNTY	TOTAL SHEETS	SHEET NO.
671	11RS-6;GRS-3;10RS-9	PEORIA	27	4
CONTRACT NO. 68J62				
ILLINOIS FED. AID PROJECT				

CODE NO.	ITEM	UNIT	TOTAL QUANTITY	CONSTRUCTION CODE			
				PEORIA COUNTY 100% STATE	PEORIA COUNTY 93.3% STATE / 6.7% W. PEORIA	PEORIA COUNTY 93.3% STATE / 6.7% PEORIA	PEORIA COUNTY 100% STATE
				FRONTAGE ROAD	TRAFFIC SIGNALS	TRAFFIC SIGNALS	TRAFFIC SIGNALS
				0005 URBAN	0021 URBAN	0021 URBAN	0021 URBAN
* 63100167	TRAFFIC BARRIER TERMINAL, TYPE 1 (SPECIAL) TANGENT	EACH	1	1			
63200310	GUARDRAIL REMOVAL	FOOT	439	439			
67100100	MOBILIZATION	L SUM	1	1			
70100450	TRAFFIC CONTROL AND PROTECTION, STANDARD 701201	L SUM	1	1			
70102620	TRAFFIC CONTROL AND PROTECTION, STANDARD 701501	L SUM	1	1			
70102622	TRAFFIC CONTROL AND PROTECTION, STANDARD 701502	L SUM	1	1			
70102635	TRAFFIC CONTROL AND PROTECTION, STANDARD 701701	L SUM	1	1			
70107025	CHANGEABLE MESSAGE SIGN	CAL DA	100	100			
70300100	SHORT TERM PAVEMENT MARKING	FOOT	4706	4706			
70300150	SHORT TERM PAVEMENT MARKING REMOVAL	SQ FT	618	618			
* 72501000	TERMINAL MARKER - DIRECT APPLIED	EACH	1	1			
* 78009000	MODIFIED URETHANE PAVEMENT MARKING - LETTERS AND SYMBOLS	SQ FT	762	762			
* 78009004	MODIFIED URETHANE PAVEMENT MARKING - LINE 4"	FOOT	22897	22897			
* 78009006	MODIFIED URETHANE PAVEMENT MARKING - LINE 6"	FOOT	17420	17420			

\* = SPECIALTY ITEM

MODEL: SOQ (Sheet) - 2  
FILE NAME: c:\p\work\pav\pav\green\m1089745\ID468xxx-shr-SOQ.dgn

USER NAME = david.green	DESIGNED -	REVISED -
	DRAWN -	REVISED -
	CHECKED -	REVISED -
PLOT DATE = 5/22/2025	DATE -	REVISED -

**STATE OF ILLINOIS  
DEPARTMENT OF TRANSPORTATION**

**SUMMARY OF QUANTITIES**

SCALE: SHEET 2 OF 4 SHEETS STA. TO STA.

F.A.P. RTE.	SECTION	COUNTY	TOTAL SHEETS	SHEET NO.
671	11RS-6;GRS-3;10RS-9	PEORIA	27	5
CONTRACT NO. 68J62				
ILLINOIS FED. AID PROJECT				

CODE NO.	ITEM	UNIT	TOTAL QUANTITY	CONSTRUCTION CODE			
				PEORIA COUNTY 100% STATE	PEORIA COUNTY 93.3% STATE / 6.7% W. PEORIA	PEORIA COUNTY 93.3% STATE / 6.7% PEORIA	PEORIA COUNTY 100% STATE
				FRONTAGE ROAD	TRAFFIC SIGNALS	TRAFFIC SIGNALS	TRAFFIC SIGNALS
				0005 URBAN	0021 URBAN	0021 URBAN	0021 URBAN
* 78009008	MODIFIED URETHANE PAVEMENT MARKING - LINE 8"	FOOT	2226	2226			
* 78009012	MODIFIED URETHANE PAVEMENT MARKING - LINE 12"	FOOT	1204	1204			
* 78009024	MODIFIED URETHANE PAVEMENT MARKING - LINE 24"	FOOT	561	561			
* 78011000	GROOVING FOR RECESSED PAVEMENT MARKING, LETTERS AND SYMBOLS	SQ FT	762	762			
* 78011025	GROOVING FOR RECESSED PAVEMENT MARKING 5"	FOOT	22897	22897			
* 78011035	GROOVING FOR RECESSED PAVEMENT MARKING 7"	FOOT	17420	17420			
* 78011045	GROOVING FOR RECESSED PAVEMENT MARKING 9"	FOOT	2226	2226			
* 78011065	GROOVING FOR RECESSED PAVEMENT MARKING 13"	FOOT	1204	1204			
* 78011125	GROOVING FOR RECESSED PAVEMENT MARKING 25"	FOOT	561	561			
* 78100100	RAISED REFLECTIVE PAVEMENT MARKER	EACH	360	360			
78300200	RAISED REFLECTIVE PAVEMENT MARKER REMOVAL	EACH	374	374			
78300202	PAVEMENT MARKING REMOVAL - WATER BLASTING	SQ FT	444	444			
X4400196	HOT-MIX ASPHALT SURFACE REMOVAL (SPECIAL)	SQ YD	993	993			
X4402815	ISLAND PAVEMENT REMOVAL AND REPLACEMENT	SQ FT	60	60			

\*= SPECIALTY ITEM

MODEL: SOQ (Sheet) - 3  
FILE NAME: c:\p\work\pav\of\green\m1089745\ID468\xxx-sht-SOQ.dgn

USER NAME = david.green	DESIGNED -	REVISED -
	DRAWN -	REVISED -
	CHECKED -	REVISED -
PLOT DATE = 5/22/2025	DATE -	REVISED -

**STATE OF ILLINOIS  
DEPARTMENT OF TRANSPORTATION**

**SUMMARY OF QUANTITIES**

SCALE: SHEET 3 OF 4 SHEETS STA. TO STA.

F.A.P. RTE.	SECTION	COUNTY	TOTAL SHEETS	SHEET NO.
671	11RS-6;GRS-3;10RS-9	PEORIA	27	6
CONTRACT NO. 68J62				
ILLINOIS FED. AID PROJECT				

CODE NO.	ITEM	UNIT	TOTAL QUANTITY	CONSTRUCTION CODE			
				PEORIA COUNTY 100% STATE	PEORIA COUNTY 93.3% STATE / 6.7% W. PEORIA	PEORIA COUNTY 93.3% STATE / 6.7% PEORIA	PEORIA COUNTY 100% STATE
				FRONTAGE ROAD	TRAFFIC SIGNALS	TRAFFIC SIGNALS	TRAFFIC SIGNALS
				0005 URBAN	0021 URBAN	0021 URBAN	0021 URBAN
X6350204	LINEAR DELINEATOR PANELS, 4 INCH	EACH	5	5			
* X8891011	VIDEO VEHICLE DETECTION SYSTEM, 3 CAMERA	EACH	3		1	1	1
XZ013798	CONSTRUCTION STATION LAYOUT	L SUM	1	1			
Z0001002	GUARDRAIL AGGREGATE EROSION CONTROL	TON	60	60			
∅ Z0076604	TRAINEES - TRAINING PROGRAM GRADUATE	HOUR	1,000	1,000			
Z0004556	HOT-MIX ASPHALT SURFACE REMOVAL (DECK)	SQ YD	447	447			

∅ 0042 \*= SPECIALTY ITEM

MODEL: SOO (Sheet) - 4  
FILE NAME: c:\p\work\p\work\green\m\1089745\1468xxx-4th-SOO.dgn

USER NAME = david.green	DESIGNED -	REVISED -
	DRAWN -	REVISED -
	CHECKED -	REVISED -
PLOT DATE = 5/22/2025	DATE -	REVISED -

**STATE OF ILLINOIS  
DEPARTMENT OF TRANSPORTATION**

**SUMMARY OF QUANTITIES**

SCALE: SHEET 4 OF 4 SHEETS STA. TO STA.

F.A.P RTE.	SECTION	COUNTY	TOTAL SHEETS	SHEET NO.
671	11RS-6;GRS-3;10RS-9	PEORIA	27	7
CONTRACT NO. 68J62				
ILLINOIS FED. AID PROJECT				





SIDEROAD PAVEMENT SCHEDULE								
LOCATION	AREA	HMA SURFACE REMOVAL - BUTT JOINT	HMA SURFACE REMOVAL, 2 3/4"	HMA SURFACE REMOVAL, 1 3/4"	TEMPORARY RAMP	POLY. BIT. MATERIALS (TACK COAT)	INCIDENTAL HMA SURFACING	ISLAND PAVEMENT REMOVAL AND REPLACEMENT
		SQ. YD.	SQ. YD.	SQ. YD.	SQ. YD.	0.08 LB/SQ FT		
		SQ. FT.	SQ. YD.	SQ. YD.	SQ. YD.	POUND	TON	SQ. FT.
<b>SIDEROADS</b>								
ALLEY	338.1	18.2		19.4	30.6	54.1	3.7	
N. PARK ROAD	4437.7	38.6	454.5		69.3	710.0	75.9	60.0
N. RHODORA AVE.	1405.3	43.1		113.1	61.1	224.8	15.3	
N. STEVER AVE.	975.0	37.5		70.8	50.9	156.0	10.6	
N. STERLING AVE.	8393.6	83.9	848.8		132.4	1343.0	143.6	
N. PIERSON AVE.	2443.6	35.9	235.6		48.9	391.0	41.8	
W. SOUTHPORT RD (IL 8)	5183.9	54.0	522.0		91.7	829.4	88.7	
N. SWORDS AVE.	7884.1	29.5	846.5		48.9	1261.5	134.9	
N. STELLA CT.	742.2	26.6		55.9	40.7	118.8	8.1	
N. HAVEN CT.	167.2	7.8		10.8	40.7	26.8	1.8	
N. ABEL CT.	786.7	30.0		57.4	40.7	125.9	8.6	
N. RABER RD.	2110.0	234.4			48.9	337.6	23.0	
<b>SUBTOTAL</b>		639.3	2907.4	327.4	704.8	5578.8	556.0	60.0
<b>GRAND TOTAL</b>		<b>SEE PAVEMENT SCHEDULE</b>						60.0

SHOULDER SCHEDULE									
LOCATION	LENGTH			WIDTH	AGGREGATE SHOULDERS, TYPE B	HMA SURFACE REMOVAL, 2 3/4"	INCIDENTAL HMA SURFACING	POLY. BIT. MATERIALS (TACK COAT)	
					1 INCH		2 3/4 INCH	0.08 LB/SQ FT	
	FOOT	FOOT	TON	FOOT	TON	SQ. YD.	TON	POUND	
<b>RT. IL 8/W. FARMINGTON RD</b>									
STA.	19+88.0	TO	24+59.0	471.0	10.0		523.3	80.6	753.6
STA.	24+59.0	TO	31+09.0	650.0	3.0	12.3			
STA.	32+91.0	TO	33+11.0	20.0	3.0	0.4			
STA.	40+94.0	TO	43+05.0	211.0	6.0		140.7	21.7	202.6
STA.	43+05.0	TO	45+34.0	229.0	3.0	4.3			
STA.	51+76.0	TO	55+49.0	373.0	8.0		331.6	51.1	477.4
STA.	55+49.0	TO	81+50.0	2601.0	3.0	49.4			
<b>RR OMISSION</b>									
STA.	83+00.0	TO	89+18.0	618.0	3.0	11.7			
<b>LT. IL 8/W. FARMINGTON RD</b>									
STA.	25+65.0	TO	31+09.0	544.0	3.0	10.3			
STA.	32+91.0	TO	33+11.0	20.0	3.0	0.4			
STA.	33+11.0	TO	46+70.0	1359.0	9.0		1359.0	209.3	1957.0
STA.	66+95.0	TO	81+50.0	1455.0	3.0	27.6			
<b>RR OMISSION</b>									
STA.	83+00.0	TO	89+18.0	618.0	3.0	11.7	206.0		
<b>SUBTOTAL</b>					128.2	2560.6	362.6	3390.6	
<b>GRAND TOTAL</b>					128	<b>SEE PAVEMENT SCHEDULE</b>			

MODEL: Schedule (Sheet) - 2  
FILE NAME: c:\p\work\pav\pav\green\m1089745\ID468\pav\sh-schedule.dgn

USER NAME = david.green	DESIGNED -	REVISED -
	DRAWN -	REVISED -
	CHECKED -	REVISED -
PLOT DATE = 5/22/2025	DATE -	REVISED -

STATE OF ILLINOIS  
DEPARTMENT OF TRANSPORTATION

SCHEDULE OF QUANTITIES

SCALE: SHEET 2 OF 5 SHEETS STA. TO STA.

F.A.P. RTE.	SECTION	COUNTY	TOTAL SHEETS	SHEET NO.
671	11RS-6;GRS-3;10RS-9	PEORIA	27	9
CONTRACT NO. 68J62				
ILLINOIS FED. AID PROJECT				

ENTRANCE SCHEDULE						
ENTRANCE NO.	TYPE	AREA	AGGREGATE SURFACE COURSE, TYPE A	POLY. BIT. MATERIALS (TACK COAT)	INCIDENTAL HMA SURFACING	HMA SURFACE REMOVAL, 1 3/4"
		SQ. FT.	TON	POUND	TON	SQ. YD.
<b>RT. IL 8/W. FARMINGTON RD</b>						
1	PE	539.0		862.4	5.9	59.9
3	PE	250.0		400.0	2.7	27.8
4	FE	215.0	2.4			
5	PE	290.0		464.0	3.2	32.2
6	PE	150.0		240.0	1.6	16.7
7	PE	300.0		480.0	3.3	33.3
8	PE	830.0	9.5			
10	PE	320.0		512.0	3.5	35.6
11	PE	120.0	1.4			
13	PE	132.0	1.5			
18	PE	315.0	3.6			
21	PE	275.0	3.1			
23	CE	250.0		400.0	2.7	27.8
24	CE	260.0		416.0	2.8	28.9
31	CE	200.0		320.0	2.2	22.2
33	CE	385.0		616.0	4.2	42.8
<b>LT. IL 8/W. FARMINGTON RD.</b>						
2	CE	90.0	1.0			
9	CE	455.0		728.0	5.0	50.6
12	PE	295.0	3.4			
14	PE	203.0	2.3			
15	PE	100.0		160.0	1.1	11.1
16	PE	100.0	1.1	160.0	1.1	11.1
17	PE	180.0	2.1			
19	PE	215.0		344.0	2.3	23.9
20	PE	250.0	2.8			
22	PE	135.0		216.0	1.5	15.0
25	CE	200.0	2.3			
26	CE	320.0		512.0	3.5	35.6
27	CE	950.0	10.8			
28	CE	515.0		824.0	5.6	57.2
29	CE	450.0	5.1			
30	CE	1050.0	12.0			
32	CE	730.0		1168.0	7.9	81.1
<b>SUBTOTAL</b>			<b>64.4</b>	<b>8822.4</b>	<b>60.0</b>	<b>612.7</b>
<b>GRAND TOTAL</b>			<b>64.0</b>	<b>SEE PAVEMENT SCHEDULE</b>		

MODEL: Schedule (Sheet) - 3  
FILE NAME: c:\p\work\pav\dm\green\dm1089745\ID468xxx-schedule.dgn

USER NAME = david.green	DESIGNED -	REVISED -
	DRAWN -	REVISED -
	CHECKED -	REVISED -
PLOT DATE = 5/22/2025	DATE -	REVISED -

**STATE OF ILLINOIS  
DEPARTMENT OF TRANSPORTATION**

**SCHEDULE OF QUANTITIES**

SCALE: SHEET 3 OF 5 SHEETS STA. TO STA.

F.A.P. RTE.	SECTION	COUNTY	TOTAL SHEETS	SHEET NO.
671	11RS-6;GRS-3;10RS-9	PEORIA	27	10
CONTRACT NO. 68J62				
ILLINOIS FED. AID PROJECT				

PAVEMENT MARKING TABLE

LOCATION	MODIFIED URETHANE PAVEMENT MARKING - LINE 4" (CENTERLINE)		GROOVING FOR RECESSED PAVEMENT MARKING 5"	MODIFIED URETHANE PAVEMENT MARKING - LINE 6" (EDGE LINES/ CROSSWALKS)	GROOVING FOR RECESSED PAVEMENT MARKING 7"	MODIFIED URETHANE PAVEMENT MARKING - LINE 8"		GROOVING FOR RECESSED PAVEMENT MARKING 9"	MODIFIED URETHANE PAVEMENT MARKING - LINE 12"		GROOVING FOR RECESSED PAVEMENT MARKING 13"	*MODIFIED URETHANE PAVEMENT MARKING - LINE 24"	GROOVING FOR RECESSED PAVEMENT MARKING 25"	MODIFIED URETHANE PAVEMENT MARKING - LETTERS AND SYMBOLS	GROOVING FOR RECESSED PAVEMENT MARKINGS, LETTERS AND SYMBOLS	RAISED REFLECTIVE PAVEMENT MARKER	RAISED REFLECTIVE PAVEMENT MARKER REMOVAL	*PAVEMENT MARKING REMOVAL - WATER BLASTING			
	YELLOW SOLID	YELLOW CL SKIP				WHITE SOLID			WHITE SOLID	YELLOW SOLID									WHITE SOLID		
	FOOT	FOOT				FOOT	FOOT		FOOT	FOOT									FOOT	FOOT	FOOT
<b>IL 8/W. Farmington Rd.</b>																					
STA.	99+98.0	TO	101+23.0	424.0		424.0	694.0	694.0	422.0		422.0	102.5	25.0	127.5	351.0	351.0		0.0	6	6	444
STA.	101+23.0	TO	104+84.0	1444.0		1444.0	722.0	722.0					228.0	228.0					18	18	
STA. EQ: 104+84 (BK) = 5+15 (AH)																					
STA.	05+15.0	TO	10+34.0	2076.0		2076.0	1038.0	1038.0					260.0	260.0					26	26	
STA.	10+34.0	TO	15+84.0	2200.0		2200.0	1100.0	1100.0					85.0	85.0					28	42	
STA.	15+84.0	TO	23+16.0	2220.0		2220.0	1185.0	1185.0	340.0		340.0		33.0	33.0			62.4	62.4	37	37	
STA.	23+16.0	TO	34+10.0	1134.0	270.0	1404.0	2188.0	2188.0											14	14	
STA.	34+10.0	TO	48+37.0	3120.0	380.0	3500.0	2019.0	2019.0	436.0	51.0	487.0		75.0	75.0	25.0	25.0	156.0	156.0	85	85	
STA.	48+37.0	TO	71+01.0	5088.0	640.0	5728.0	4160.0	4160.0	350.0		350.0		116.0	116.0	30.0	30.0	312.0	312.0	121	121	
STA.	71+01.0	TO	81+50.0	1099.0	999.0	2098.0	2098.0	2098.0							30.0	30.0	61.2	61.2	13	13	
RR OMISSION																					
STA.	83+00.0	TO	89+18.0	1090.0	40.0	1130.0	1236.0	1236.0							30.0	30.0	61.2	61.2	8	8	
<b>SIDEROADS</b>																					
PARK RD.				120.0		120.0	205.0	205.0	341.0		341.0	138.0		138.0	20.0	20.0	62.4	62.4			
STERLING AVE.				176.0		176.0	120.0	120.0	176.0		176.0	141.0		141.0	45.0	45.0	31.2	31.2	5	5	
PIERSON AVE.				80.0		80.0	55.0	55.0							10.0	10.0	15.6	15.6			
IL 8 (SOUTHPORT RD.)				130.0		130.0	185.0	185.0							10.0	10.0					
SWORDS AVE.				137.0	30.0	167.0	415.0	415.0	110.0		110.0				10.0	10.0					
<b>SUBTOTAL</b>				<b>20538.0</b>	<b>2359.0</b>	<b>22897.0</b>	<b>17420.0</b>	<b>17420.0</b>	<b>2175.0</b>	<b>51.0</b>	<b>2226.0</b>	<b>381.5</b>	<b>822.0</b>	<b>1203.5</b>	<b>561.0</b>	<b>561.0</b>	<b>762.0</b>	<b>762.0</b>	<b>360.4</b>	<b>374.4</b>	<b>444.0</b>
<b>GRAND TOTAL</b>				<b>22897.0</b>		<b>22897.0</b>	<b>17420.0</b>	<b>17420.0</b>	<b>2226.0</b>		<b>2226.0</b>	<b>1204.0</b>		<b>1204.0</b>	<b>561.0</b>	<b>561.0</b>	<b>762.0</b>	<b>762.0</b>	<b>360.0</b>	<b>374.0</b>	<b>444.0</b>

\* SPACING BETWEEN CROSSWALK LADDER MARKINGS SHALL BE 24"

\*\*PAVEMENT MARKING REMOVAL - WATER BLASTING INCLUDES 2 CROSSWALKS THAT CROSS MAIN STREET

MODEL: Schedule (Sheet) -4  
FILE NAME: c:\p\work\pavmark\green\d1089745\1468xxx-ah-schedule.dgn

USER NAME = david.green	DESIGNED -	REVISED -
	DRAWN -	REVISED -
	CHECKED -	REVISED -
PLOT DATE = 5/22/2025	DATE -	REVISED -

STATE OF ILLINOIS  
DEPARTMENT OF TRANSPORTATION

**SCHEDULE OF QUANTITIES**

SCALE: SHEET 4 OF 5 SHEETS STA. TO STA.

F.A.P. RTE.	SECTION	COUNTY	TOTAL SHEETS	SHEET NO.
671	11RS-6;GRS-3;10RS-9	PEORIA	27	11
CONTRACT NO. 68J62				
ILLINOIS FED. AID PROJECT				

SHORT TERM PAVEMENT MARKING TABLE								
LOCATION				SHORT TERM PAVEMENT MARKING				SHORT TERM PAVEMENT MARKING REMOVAL*
				CENTERLINE/TURN LANE APPLICATION		LINE 24"		
				# OF APPLICATIONS	FOOT	# OF APPLICATIONS	FOOT	
<b>IL 8/W. FARMINGTON RD.</b>								
STA.	99+98.0	TO	104+84.0	3	312.0			34.6
STA. EQ: 104+84 (BK) = 5+15 (AH)								
STA.	05+15.0	TO	10+34.0	3	312.0			34.6
STA.	10+34.0	TO	15+84.0	3	336.0			37.3
STA.	15+84.0	TO	23+16.0	3	456.0	3.0	10.0	57.3
STA.	23+16.0	TO	34+10.0	3	336.0			37.3
STA.	34+10.0	TO	48+37.0	3	852.0	3.0	93.0	156.6
STA.	48+37.0	TO	71+01.0	3	1413.0	3.0	50.0	190.2
STA.	71+01.0	TO	81+50.0	3	324.0	3.0	10.0	42.6
RR OMISSION								
STA.	83+00.0	TO	89+18.0	3	192.0	3.0	10.0	28.0
<b>SUBTOTAL</b>					<b>4533.0</b>		<b>173.0</b>	<b>618.5</b>
<b>GRAND TOTAL</b>					<b>4706.0</b>			<b>618.0</b>

\*SHORT TERM PAVEMENT MARKING REMOVAL ONLY REQUIRED FOR ONE APPLICATION

GUARDRAIL SCHEDULE											
LOCATION				GUARDRAIL REMOVAL	STEEL PLATE BEAM GUARDRAIL, TYPE A, 6 FOOT POSTS	TRAFFIC BARRIER TERMINAL, TYPE 1 (SPECIAL) TANGENT	TRAFFIC BARRIER TERMINAL, TYPE 2	LINEAR DELINEATOR PANELS, 4 INCH	TERMINAL MARKER - DIRECT APPLIED	GUARDRAIL AGGREGATE EROSION CONTROL	
				FOOT	FOOT	EACH	EACH	EACH	EACH	TON	
RT.	STA.	13+27	TO	17+66	439.0	362.5	1.0	1.0	5.0	1.0	60.0
<b>TOTAL</b>					<b>439.0</b>	<b>363.0</b>	<b>1.0</b>	<b>1.0</b>	<b>5.0</b>	<b>1.0</b>	<b>60.0</b>

INLETS TO BE ADJUSTED	
LOCATION	EACH
MAIN ST. / IL 8 (NE QUAD)	1
<b>TOTAL</b>	<b>1</b>

JOBSITE TABLE							
LOCATION	MOBILIZATION	CHANGEABLE MESSAGE SIGN*	CONSTRUCTION STATION LAYOUT	TRAFFIC CONTROL AND PROTECTION, STANDARD 701201	TRAFFIC CONTROL AND PROTECTION, STANDARD 701501	TRAFFIC CONTROL AND PROTECTION, STANDARD 701502	TRAFFIC CONTROL AND PROTECTION, STANDARD 701701
	L SUM	CAL DAY	L SUM	L SUM	L SUM	L SUM	L SUM
JOBSITE	1.0	100.0	1.0	1.0	1.0	1.0	1.0
<b>TOTAL</b>	<b>1.0</b>	<b>100.0</b>	<b>1.0</b>	<b>1.0</b>	<b>1.0</b>	<b>1.0</b>	<b>1.0</b>

\* 5 BOARDS FOR 20 DAYS EACH

MODEL: Schedule (Sheet) - 5  
FILE NAME: c:\p\work\pav\dm\green\dm1089745\ID468xx-sht-schedule.dgn

USER NAME = david.green	DESIGNED -	REVISED -
	DRAWN -	REVISED -
	CHECKED -	REVISED -
PLOT DATE = 5/22/2025	DATE -	REVISED -

**STATE OF ILLINOIS  
DEPARTMENT OF TRANSPORTATION**

**SCHEDULE OF QUANTITIES**

SCALE: SHEET 5 OF 5 SHEETS STA. TO STA.

F.A.P. RTE.	SECTION	COUNTY	TOTAL SHEETS	SHEET NO.
671	11RS-6;GRS-3;10RS-9	PEORIA	27	12
CONTRACT NO. 68J62				
ILLINOIS FED. AID PROJECT				

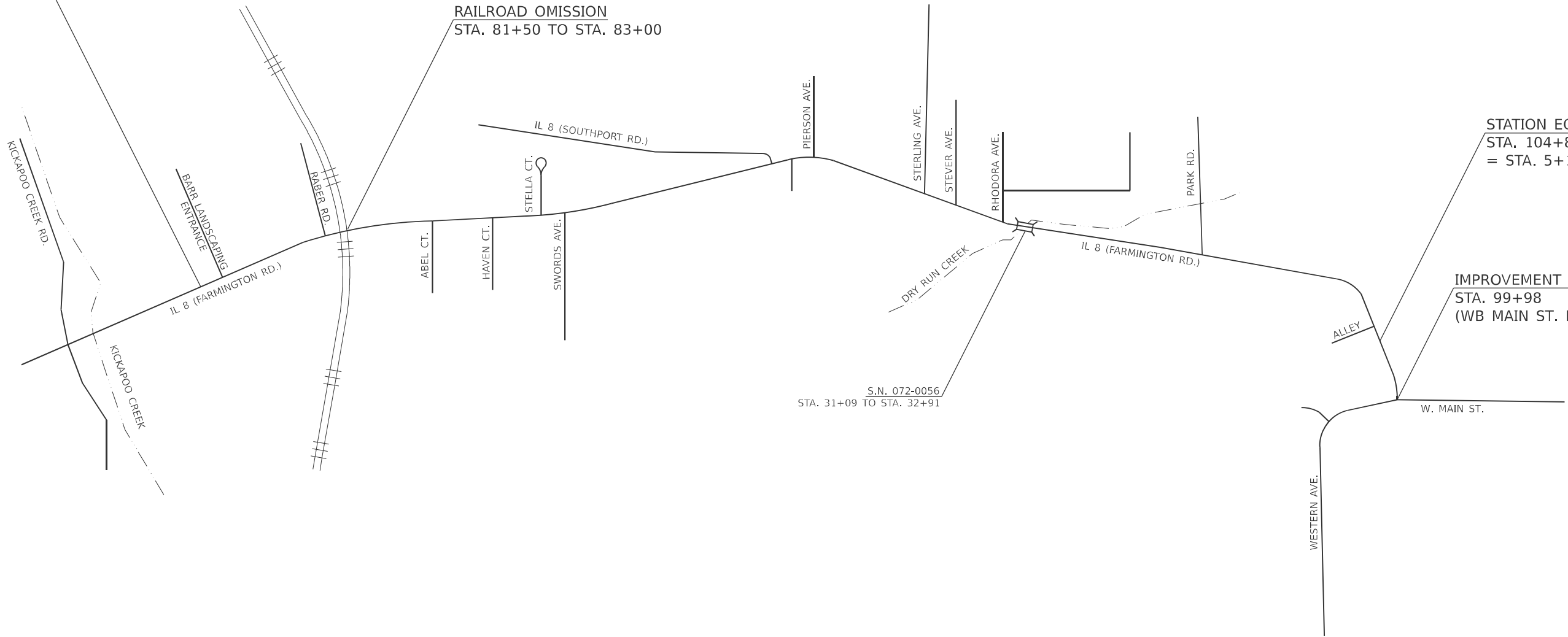


IMPROVEMENT ENDS  
STA. 89+18

RAILROAD OMISSION  
STA. 81+50 TO STA. 83+00

STATION EQUATION:  
STA. 104+84 (BK)  
= STA. 5+15 (AH)

IMPROVEMENT BEGINS  
STA. 99+98  
(WB MAIN ST. EOP)



MODEL: Detail (Sheet) - 2  
FILE NAME: c:\p\work\pav\id\green\dmd1089745\ID468xxx-shr-Details.dgn

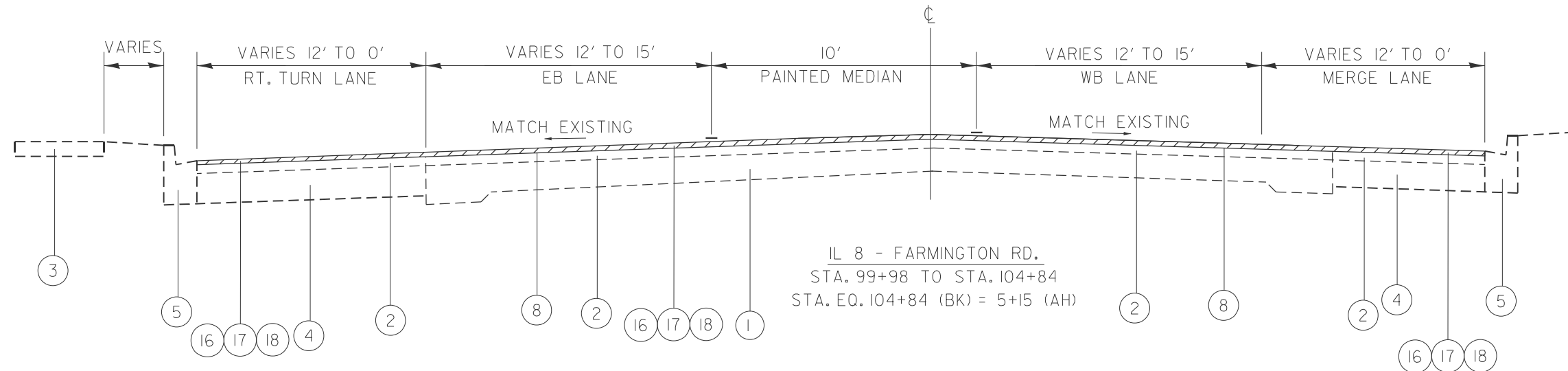
USER NAME = david.green	DESIGNED -	REVISED -
	DRAWN -	REVISED -
	CHECKED -	REVISED -
PLOT DATE = 5/22/2025	DATE -	REVISED -

**STATE OF ILLINOIS  
DEPARTMENT OF TRANSPORTATION**

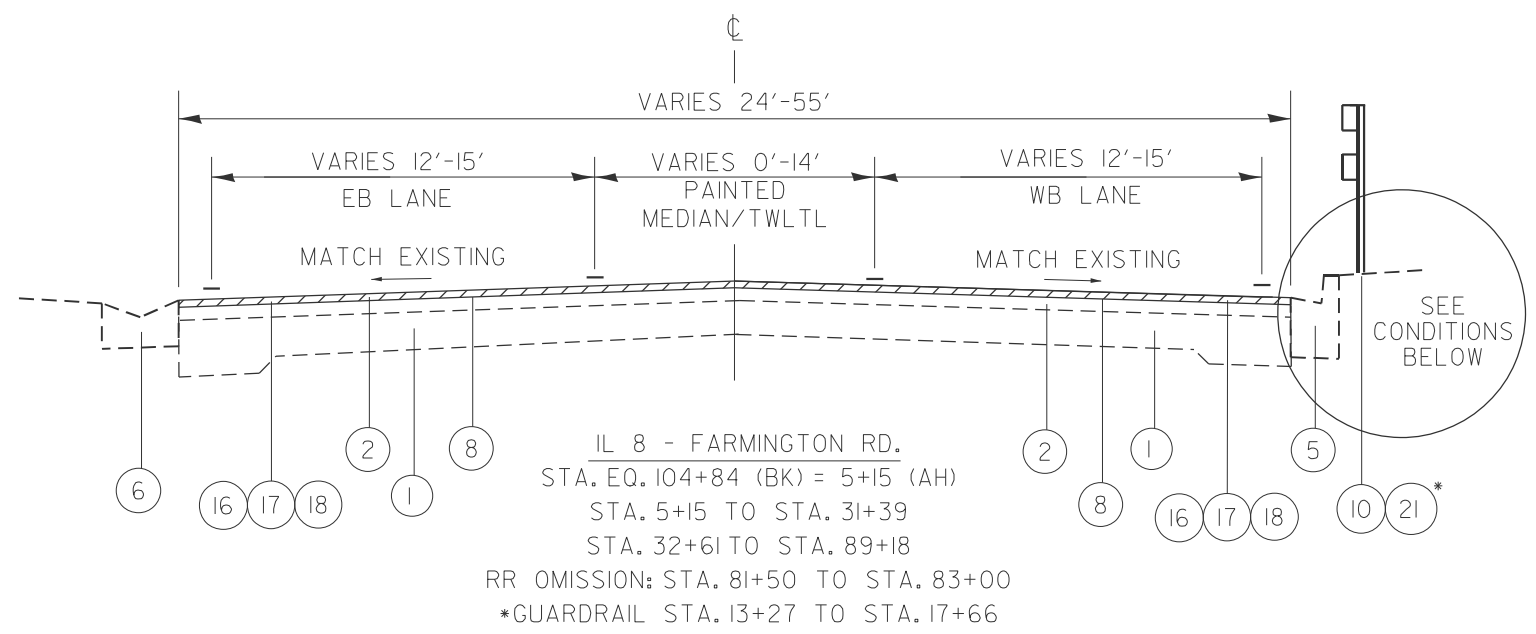
**LINE DIAGRAM**

SCALE: SHEET A001 OF 1 SHEETS STA. TO STA.

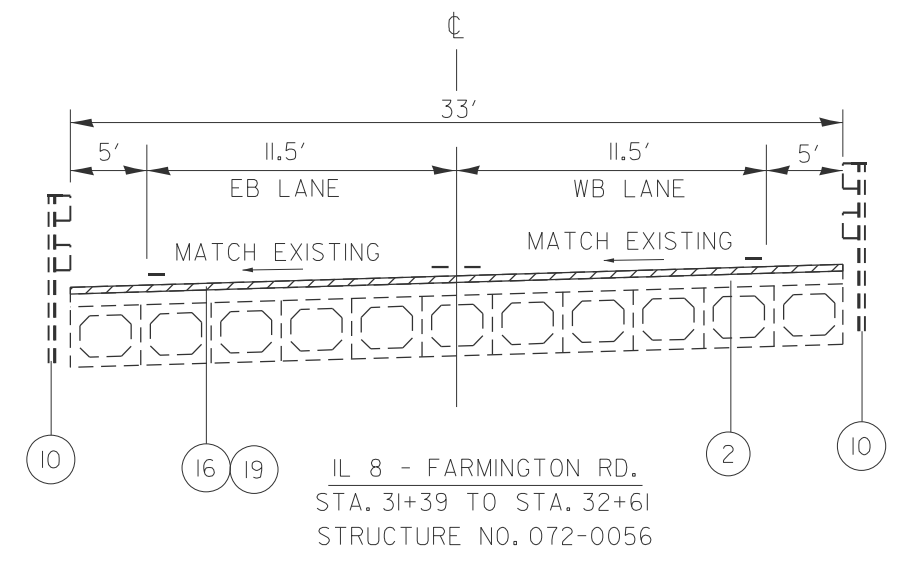
F.A.P. RTE.	SECTION	COUNTY	TOTAL SHEETS	SHEET NO.
671	11RS-6;GRS-3;10RS-9	PEORIA	27	13
CONTRACT NO. 68J62				
ILLINOIS FED. AID PROJECT				



IL 8 - FARMINGTON RD.  
 STA. 99+98 TO STA. 104+84  
 STA. EQ. 104+84 (BK) = 5+15 (AH)



IL 8 - FARMINGTON RD.  
 STA. EQ. 104+84 (BK) = 5+15 (AH)  
 STA. 5+15 TO STA. 31+39  
 STA. 32+61 TO STA. 89+18  
 RR OMISSION: STA. 81+50 TO STA. 83+00  
 \*GUARDRAIL STA. 13+27 TO STA. 17+66



IL 8 - FARMINGTON RD.  
 STA. 31+39 TO STA. 32+61  
 STRUCTURE NO. 072-0056

CONDITION 1: CONDITION 2: CONDITION 3: CONDITION 4:

NOTES:  
 1. CONDITIONS APPLY TO WB AND EB SIDES  
 2. VARIOUS TURN LANES EXIST ADJACENT TO WB LANES NOT SHOWN ON TYPICAL  
 3. SEE PLAN SHEETS FOR LOCATIONS OF CONDITION

EXISTING ITEMS		PROPOSED ITEMS	
1.	9-6-9, P.C.C. PAVEMENT	16.	POLY. HMA SURF. COURSE, IL-9.5, MIX "D", N50, 1.75"
2.	HMA OVERLAY, VARIABLE DEPTH	17.	POLY. HMA BIND. COURSE, IL-4.75, N50, 1.0"
3.	P.C.C. SIDEWALK	18.	HMA SURFACE REMOVAL, 2.75"
4.	P.C.C. BASE COURSE, 8"	19.	HMA SURFACE REMOVAL(DECK), 1.75"
5.	COMB. CONC. CURB & GUTTER	20.	AGGREGATE SHOULDERS, TYPE B, 1"
6.	CONCRETE GUTTER, TYPE B	21.	GUARDRAIL
7.	HMA SHOULDER	22.	INCIDENTAL HMA SURFACING, 2.75"
8.	AREA REFLECTIVE CRACK CONTROL		
9.	AGGREGATE SHOULDERS		
10.	GUARDRAIL		

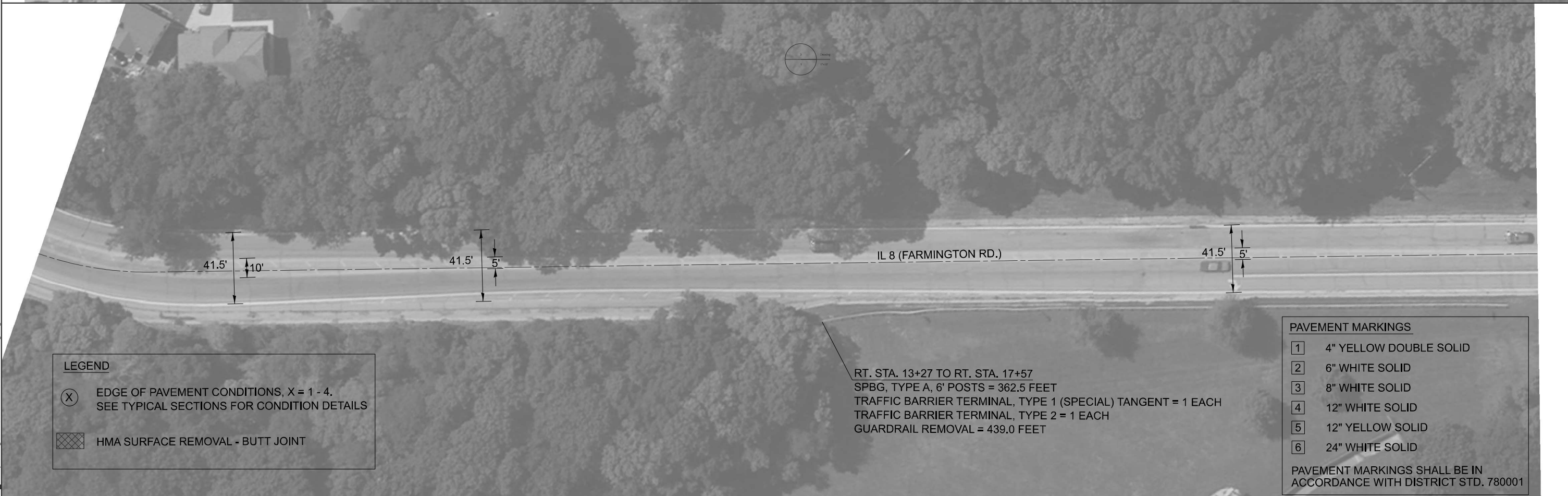
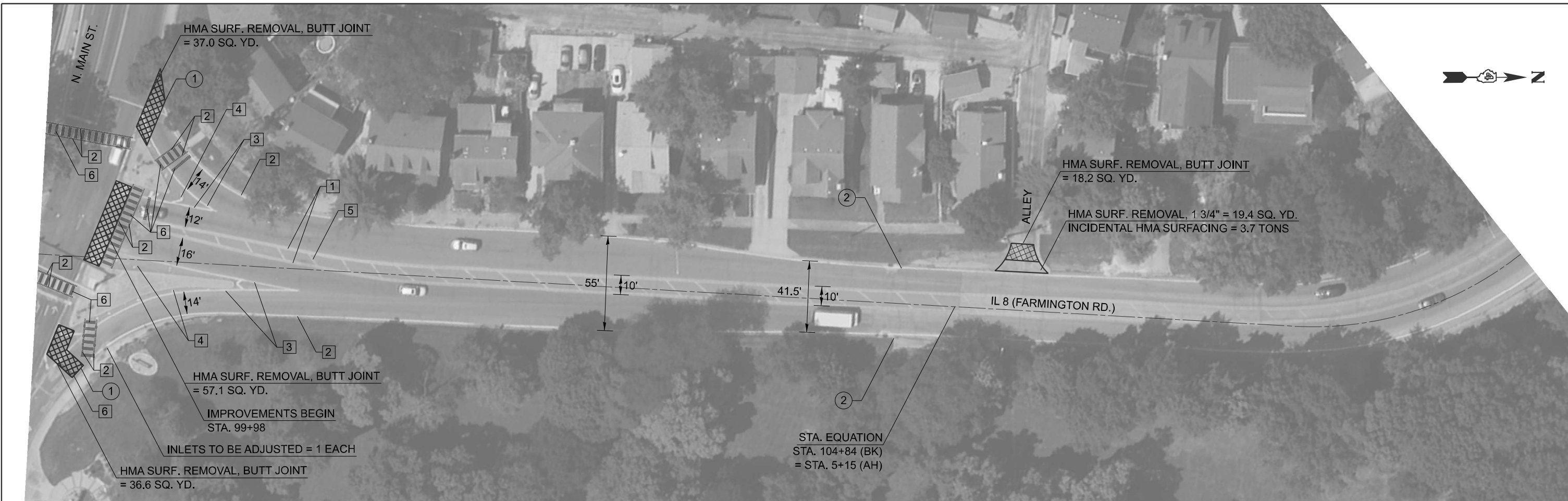
MODEL: Typical Sections (Sheet) - 1  
 FILE NAME: c:\p\work\pav\typical\green\mtd1089745\1089745-ah-typical-10.dgn

USER NAME = david.green	DESIGNED -	REVISED -
	DRAWN -	REVISED -
	CHECKED -	REVISED -
PLOT DATE = 5/15/2025	DATE -	REVISED -

STATE OF ILLINOIS  
 DEPARTMENT OF TRANSPORTATION

TYPICAL SECTIONS			
SCALE:	SHEET 1	OF 1	SHEETS
	STA.		TO STA.

F.A.P. RTE.	SECTION	COUNTY	TOTAL SHEETS	SHEET NO.
671	11RS-6;GRS-3;10RS-9	PEORIA	27	14
CONTRACT NO. 68J62				
ILLINOIS FED. AID PROJECT				



MODEL: Unnamed Plan-1 - Plan (Sheet)  
 FILE NAME: c:\p\work\wv\10\1099747\1099747.dwg

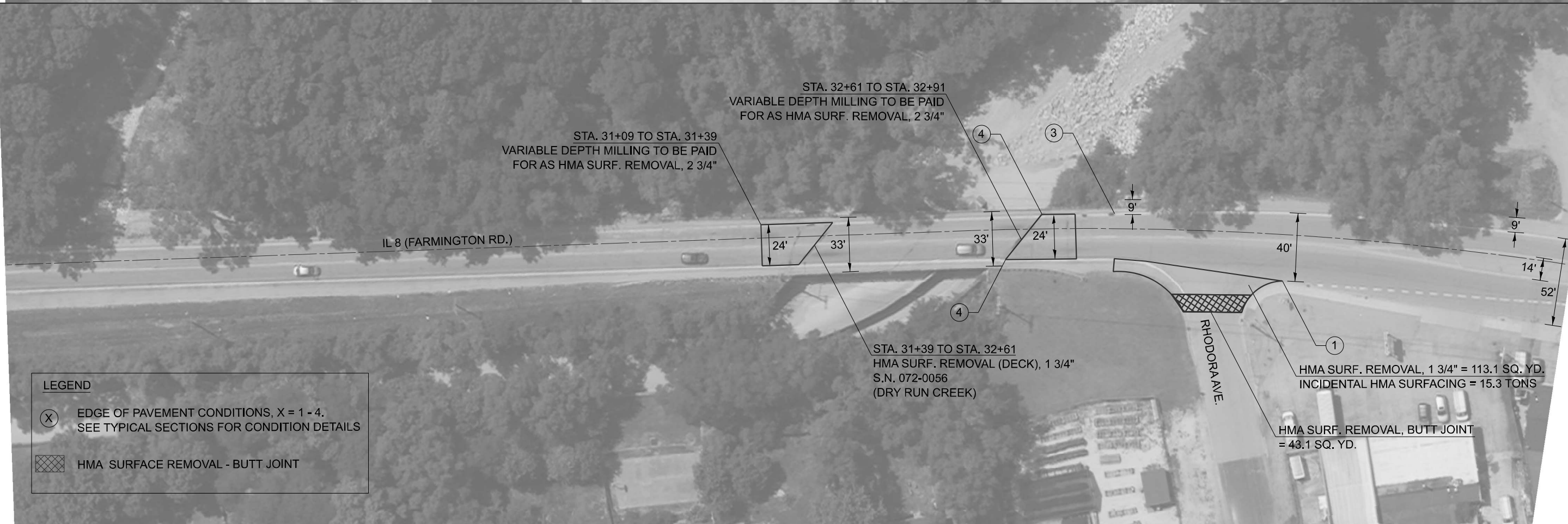
USER NAME = david.green	DESIGNED -	REVISED -
	DRAWN -	REVISED -
	CHECKED -	REVISED -
PLOT DATE = 5/22/2025	DATE -	REVISED -

**STATE OF ILLINOIS  
DEPARTMENT OF TRANSPORTATION**

**PLAN SHEETS**

SCALE: 1"=30'    SHEET 1 OF 5 SHEETS    STA. 0+00.0000 TO STA. 18+00.0001

F.A.P. RTE.	SECTION	COUNTY	TOTAL SHEETS	SHEET NO.
671	11RS-6;GRS-3;10RS-9	PEORIA	27	15
CONTRACT NO. 68J62				
ILLINOIS FED. AID PROJECT				



LEGEND	
(X)	EDGE OF PAVEMENT CONDITIONS, X = 1 - 4. SEE TYPICAL SECTIONS FOR CONDITION DETAILS
[Cross-hatched box]	HMA SURFACE REMOVAL - BUTT JOINT

MODEL: Unnamed Plan-1 - Plan-2 (Sheet)  
 FILE NAME: c:\p\work\wv\id\green\dm\1089747\10468xxx-Design.dgn

USER NAME = david.green	DESIGNED -	REVISED -
	DRAWN -	REVISED -
	CHECKED -	REVISED -
PLOT DATE = 5/22/2025	DATE -	REVISED -

**STATE OF ILLINOIS**  
**DEPARTMENT OF TRANSPORTATION**

PLAN SHEETS			
SCALE: 1"=30'	SHEET 2	OF 5 SHEETS	STA. 18+00.0001 TO STA. 36+00.0002

F.A.P. RTE.	SECTION	COUNTY	TOTAL SHEETS	SHEET NO.
671	11RS-6;GRS-3;10RS-9	PEORIA	27	16
CONTRACT NO. 68J62				
ILLINOIS FED. AID PROJECT				

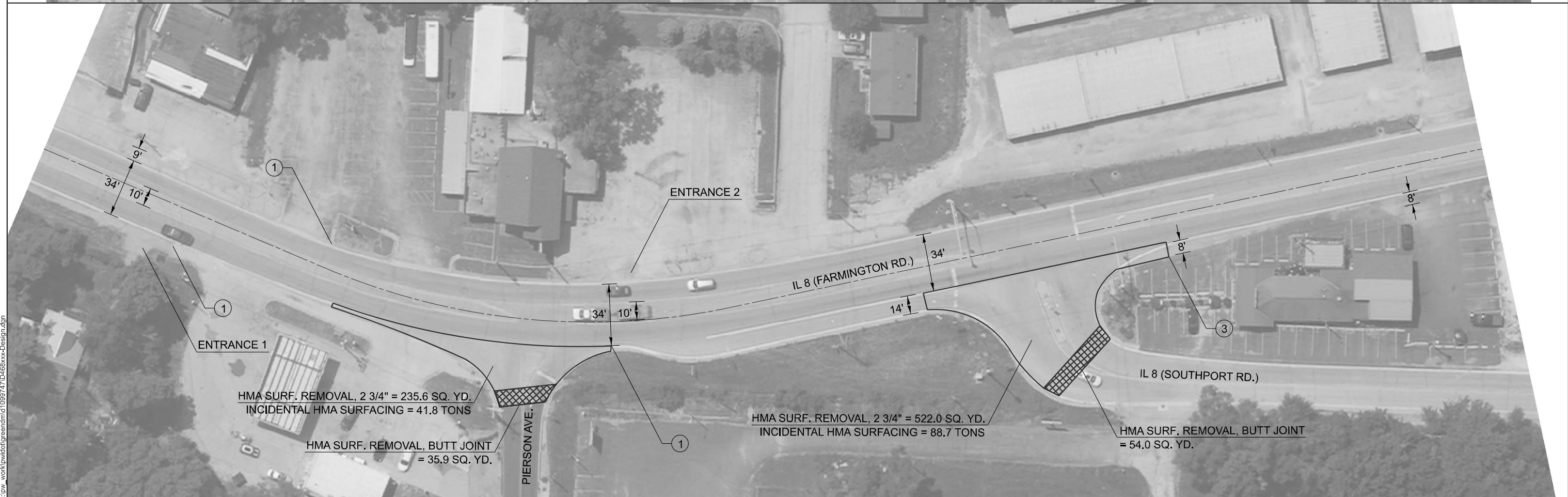
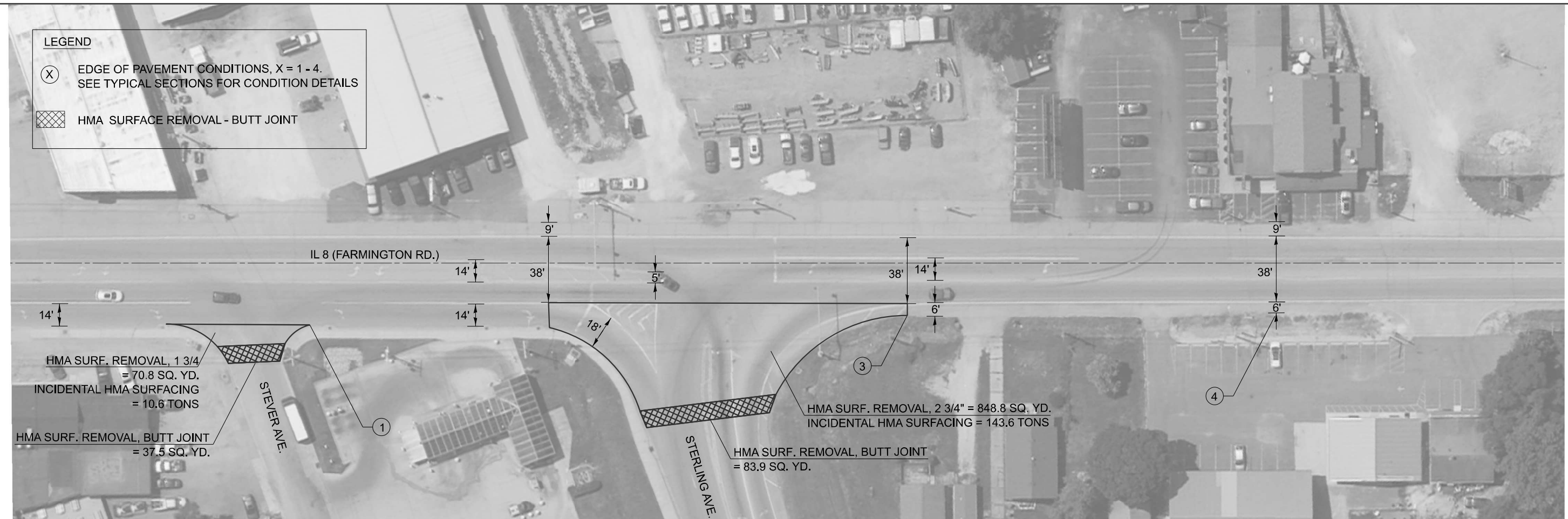




**LEGEND**

(X) EDGE OF PAVEMENT CONDITIONS, X = 1 - 4.  
SEE TYPICAL SECTIONS FOR CONDITION DETAILS

[Cross-hatched box] HMA SURFACE REMOVAL - BUTT JOINT



MODEL: Unnamed Plan-1 - Plan-4 (Sheet)  
FILE NAME: c:\p\work\dwg\design\m1089747\1468xxx-Design.dgn

USER NAME = david.green	DESIGNED -	REVISED -
	DRAWN -	REVISED -
	CHECKED -	REVISED -
PLOT DATE = 5/22/2025	DATE -	REVISED -

**STATE OF ILLINOIS  
DEPARTMENT OF TRANSPORTATION**

**PLAN SHEETS**

SCALE: 1"=30'    SHEET 3 OF 5 SHEETS    STA. 36+00.0002 TO STA. 54+00.0004

F.A.P RTE.	SECTION	COUNTY	TOTAL SHEETS	SHEET NO.
671	11RS-6;GRS-3;10RS-9	PEORIA	27	17
CONTRACT NO. 68J62				
ILLINOIS FED. AID PROJECT				



LEGEND	
(X)	EDGE OF PAVEMENT CONDITIONS, X = 1 - 4. SEE TYPICAL SECTIONS FOR CONDITION DETAILS
[Cross-hatched box]	HMA SURFACE REMOVAL - BUTT JOINT



MODEL: Unnamed Plan-1 - Plan-6 (Sheet)  
 FILE NAME: c:\p\work\wv\illinois\design\1089747\1089747.dwg-68xxx-Design.dgn

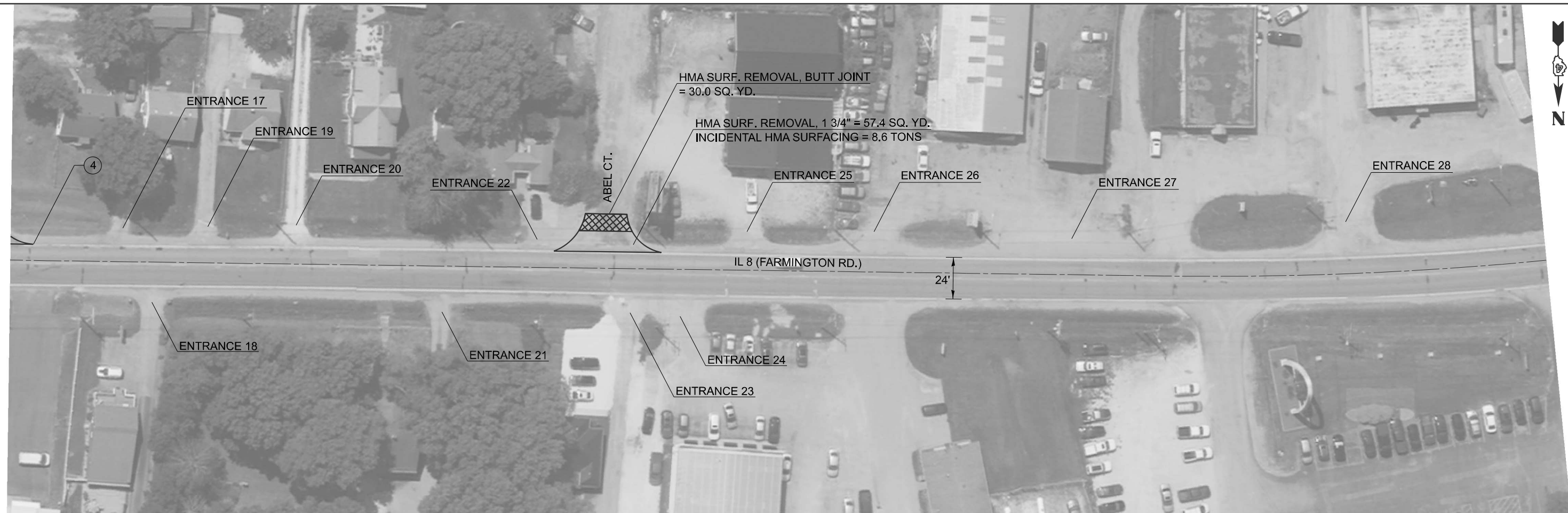
USER NAME = david.green	DESIGNED -	REVISED -
	DRAWN -	REVISED -
	CHECKED -	REVISED -
PLOT DATE = 5/22/2025	DATE -	REVISED -

**STATE OF ILLINOIS  
DEPARTMENT OF TRANSPORTATION**

**PLAN SHEETS**

SCALE: 1"=30'    SHEET 4    OF 5    SHEETS    STA. 54+00.0004    TO STA. 72+00.0005

F.A.P. RTE.	SECTION	COUNTY	TOTAL SHEETS	SHEET NO.
671	11RS-6;GRS-3;10RS-9	PEORIA	27	18
CONTRACT NO. 68J62				
ILLINOIS FED. AID PROJECT				



**LEGEND**

(X) EDGE OF PAVEMENT CONDITIONS, X = 1 - 4. SEE TYPICAL SECTIONS FOR CONDITION DETAILS

[Hatched Box] HMA SURFACE REMOVAL - BUTT JOINT

MODEL: Unnamed Plan-1 - Plan-5 (Sheet)  
FILE NAME: c:\p\work\pav\illinois\road\1089747\1468xxx-Design.dgn

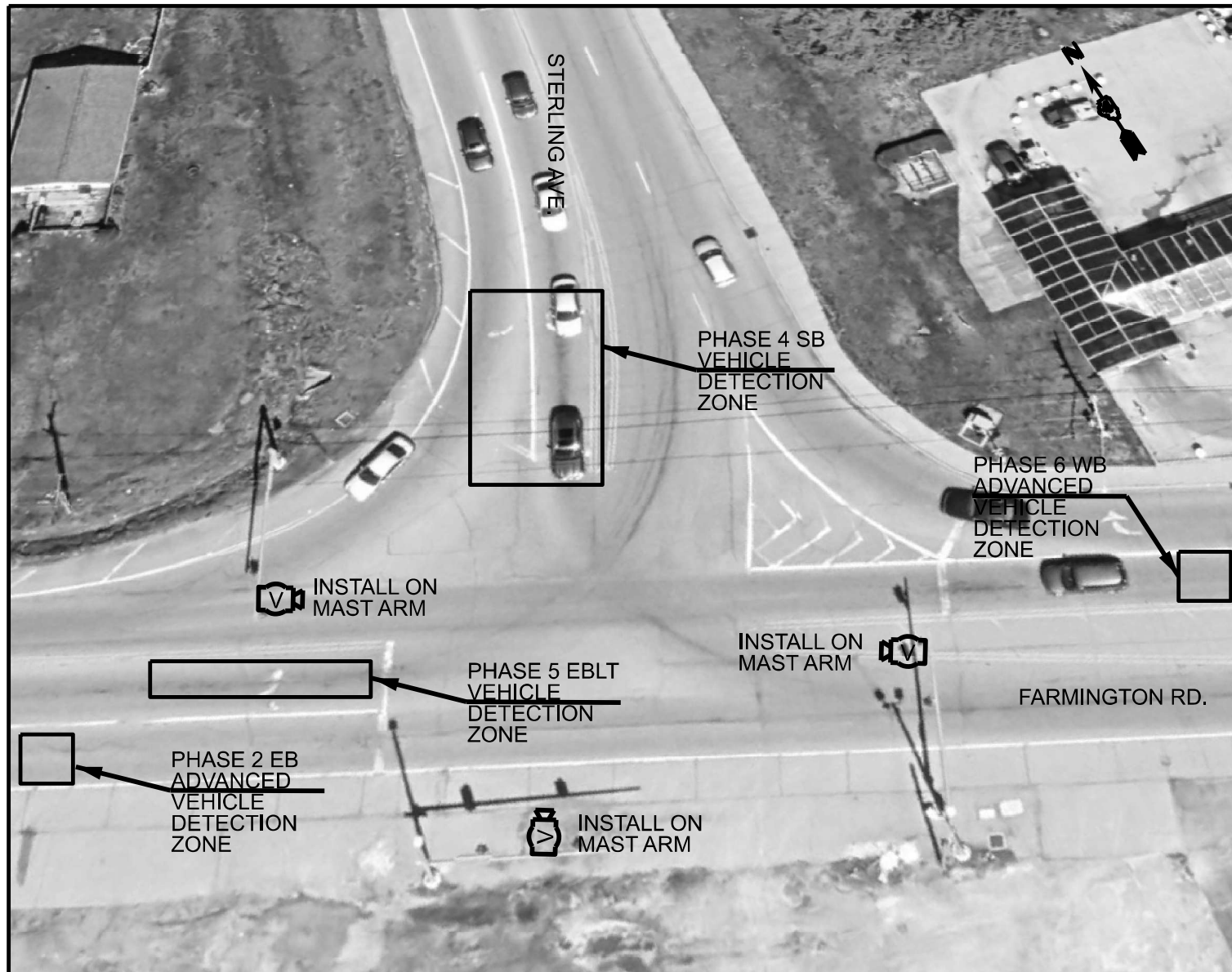
USER NAME = david.green	DESIGNED -	REVISED -
	DRAWN -	REVISED -
	CHECKED -	REVISED -
PLOT DATE = 5/21/2025	DATE -	REVISED -

**STATE OF ILLINOIS  
DEPARTMENT OF TRANSPORTATION**

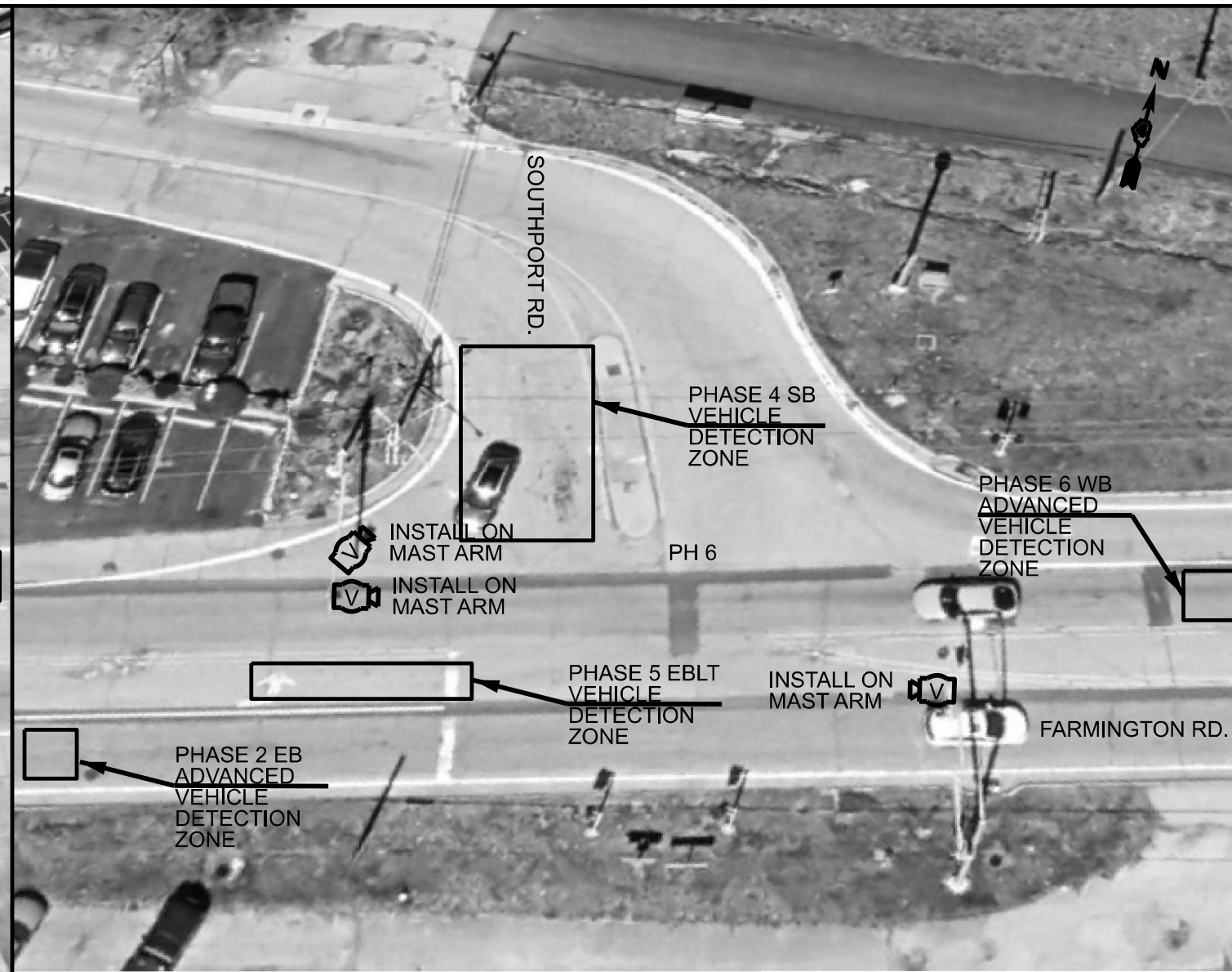
**PLAN SHEETS**

SCALE: 1"=30'    SHEET 5 OF 5 SHEETS    STA. 72+00.0005 TO STA. 90+00.0006

F.A.P. RTE.	SECTION	COUNTY	TOTAL SHEETS	SHEET NO.
671	11RS-6;GRS-3;10RS-9	PEORIA	27	19
CONTRACT NO. 68J62				
ILLINOIS FED. AID PROJECT				



FARMINGTON RD. & STERLING RD.



FARMINGTON RD. & SOUTHPORT RD.

MAST ARM INSTALLATION - CONSTRUCTION NOTES

1. THE CONTRACTOR SHALL SCHEDULE THE INSTALLATION OF THE PROPOSED VIDEO DETECTION SYSTEMS ONLY DURING THE HOURS OF 8:30 AM TO 3:00 PM MONDAY THROUGH FRIDAY.
2. THE CONTRACTOR WILL BE ALLOWED TO PLACE THE INTERSECTION INTO ALL-RED FLASH MODE AND ALL-WAY STOP CONTROL ONLY DURING THE HOURS SPECIFIED ABOVE TO FACILITATE THE INSTALLATION OF THE PROPOSED TRAFFIC SIGNAL COMPONENTS.
3. THE CONTRACTOR SHALL FURNISH AND INSTALL A MINIMUM OF TWO STOP SIGNS PER APPROACH WHEN THE INTERSECTION IS OPERATING IN ALL-RED FLASH MODE OR ALL-WAY STOP CONTROL.
4. ALL COSTS (LABOR, MATERIALS, AND EQUIPMENT) ASSOCIATED WITH THESE REQUIREMENTS SHALL BE INCLUDED IN THE CONTRACT BID PRICE FOR THE PROPOSED MAST ARMS. THERE WILL BE NO ADDITIONAL COMPENSATION FOR THIS WORK.

CONSTRUCTION NOTES

1. ANY MAINTENANCE OF EXISTING TRAFFIC SIGNALS WILL BE CONSIDERED EXTRA WORK IN ACCORDANCE WITH ARTICLE 109.04 OF THE STANDARD SPECIFICATIONS.
2. THE LOCATION OF ALL UTILITIES AND PRIVATELY OWNED FACILITIES SHALL BE FIELD VERIFIED BY THE CONTRACTOR PRIOR TO THE INSTALLATION OF ANY COMPONENTS.
3. THE CONTRACTOR SHALL BE RESPONSIBLE FOR LOCATING EXISTING IDOT ELECTRICAL FACILITIES AT HIS/HER OWN EXPENSE IF REQUIRED. THE CONTRACTOR SHALL ALSO BE LIABLE FOR ANY DAMAGE TO IDOT FACILITIES RESULTING FROM INACCURATE LOCATING.
4. ELECTRICAL WORK SHALL CONFORM WITH NATIONAL, STATE, AND LOCAL CODES.
5. THE EXISTING TRAFFIC SIGNALS SHALL REMAIN IN OPERATION DURING THE CONSTRUCTION OF THE PROPOSED TRAFFIC SIGNALS.
6. THE CONTRACTOR SHALL PROVIDE ELECTRICAL CABLE SLACK IN ACCORDANCE WITH ARTICLE 873.03.
7. ELECTRICAL CABLE WILL BE MEASURED FOR PAYMENT IN ACCORDANCE WITH ARTICLE 873.04.
8. ALL SURPLUS MATERIALS SHALL BE DISPOSED OF IN ACCORDANCE WITH ARTICLE 202.03 OF THE STANDARD SPECIFICATIONS.
9. ALL VIDEO DETECTION CAMERAS SHALL BE INSTALLED ON THE TRAFFIC SIGNAL MAST ARM. CAMERAS SHALL BE CENTERED OVER THE APPROACH (INCLUDES BOTH THRU AND LEFT TURN LANES) AND INSTALLED ON FIVE FT. EXTENSION BRACKETS.
10. THE COST OF REMOVING EXISTING ITEMS SHALL BE INCLUDED IN THE COST OF THE PROPOSED ITEMS.

BILL OF MATERIALS		
FARMINGTON RD. @ STERLING AVE. & SOUTHPORT RD.		
VIDEO VEHICLE DETECTION SYSTEM, 3 CAMERA	EACH	2.0

MODEL: Default  
FILE NAME: c:\pwwork\hanson\0939664\SIGNALS\Complete.dgn

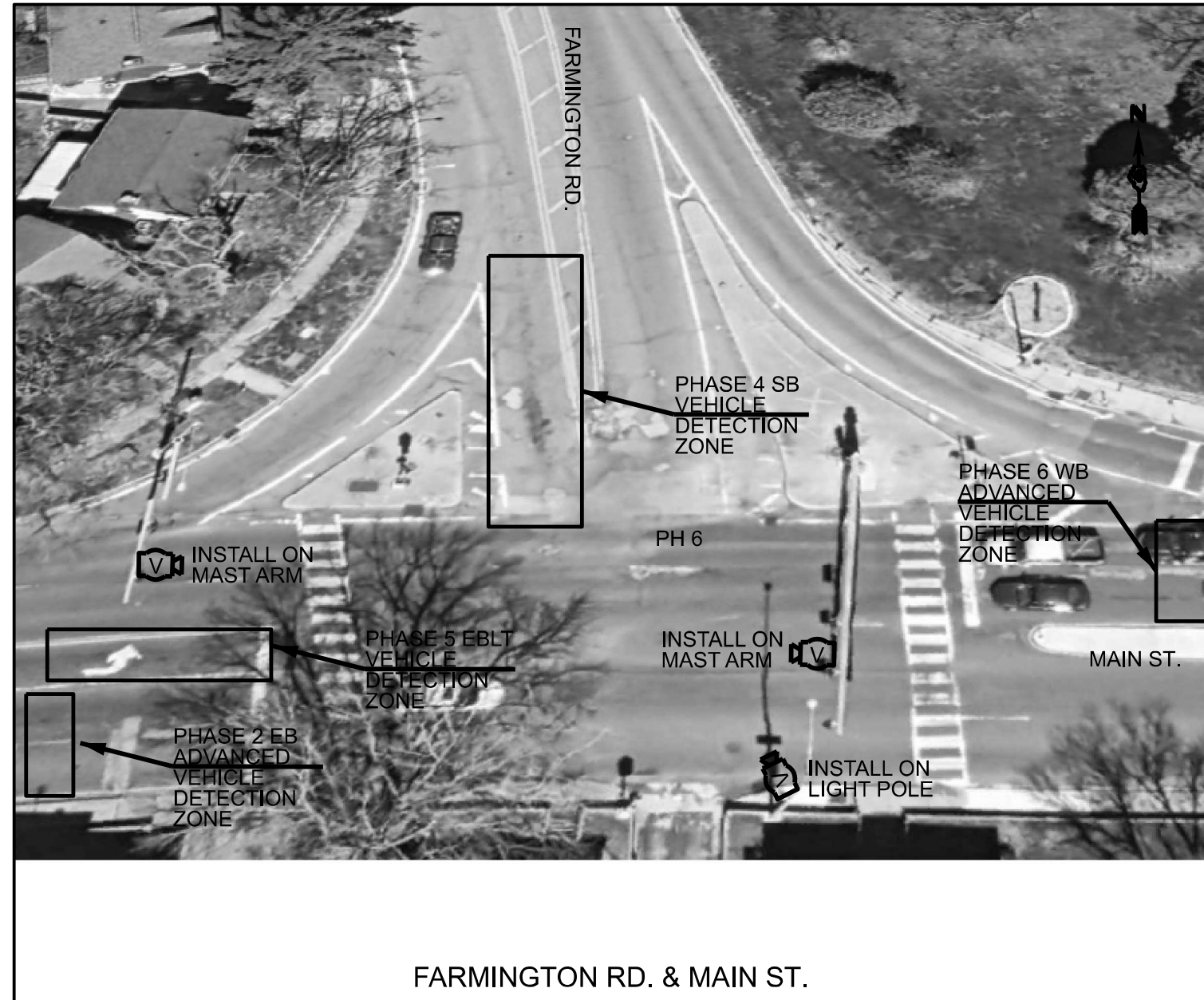
USER NAME = trevor.hanson	DESIGNED - _____	REVISED - _____
	DRAWN - _____	REVISED - _____
	CHECKED - _____	REVISED - _____
PLOT DATE = 1/7/2025	DATE - _____	REVISED - _____

STATE OF ILLINOIS  
DEPARTMENT OF TRANSPORTATION

PROPOSED TRAFFIC SIGNALS  
FARMINGTON RD. & STERLING AVE.  
FARMINGTON RD. & SOUTHPORT RD.

SCALE: \_\_\_\_\_ SHEET \_\_\_\_\_ OF \_\_\_\_\_ SHEETS STA. \_\_\_\_\_ TO STA. \_\_\_\_\_

F.A.P. RTE.	SECTION	COUNTY	TOTAL SHEETS	SHEET NO.
671	11RS-6/GRS-3/10RS-9	PEORIA	27	20
CONTRACT NO. 68J62				
ILLINOIS FED. AID PROJECT				



FARMINGTON RD. & MAIN ST.

BILL OF MATERIALS		
FARMINGTON RD. @ MAIN ST.		
VIDEO VEHICLE DETECTION SYSTEM, 3 CAMERA	EACH	1.0

MODEL: Default  
FILE NAME: c:\pwwork\hanson\0939664\Signals Complete.dgn

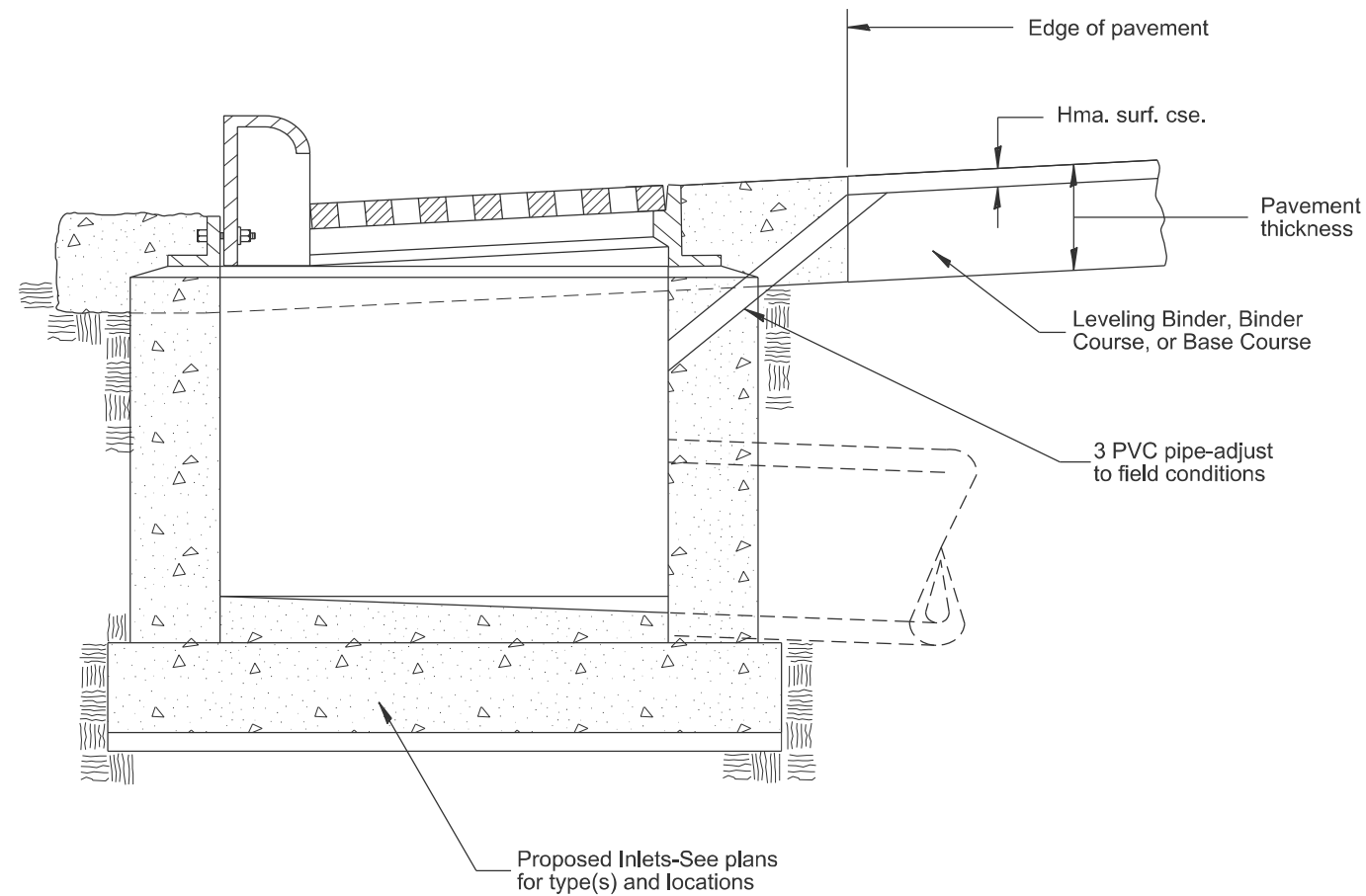
USER NAME = trevor.hanson	DESIGNED - _____	REVISED - _____
	DRAWN - _____	REVISED - _____
	CHECKED - _____	REVISED - _____
PLOT DATE = 1/7/2025	DATE - _____	REVISED - _____

**STATE OF ILLINOIS  
DEPARTMENT OF TRANSPORTATION**

**PROPOSED TRAFFIC SIGNALS  
FARMINGTON RD. & MAIN ST.**

SCALE: \_\_\_\_\_ SHEET \_\_\_\_\_ OF \_\_\_\_\_ SHEETS STA. \_\_\_\_\_ TO STA. \_\_\_\_\_

F.A.P. RTE.	SECTION	COUNTY	TOTAL SHEETS	SHEET NO.
671	11RS-6;GRS-3;10RS-9	PEORIA	27	21
CONTRACT NO. 68J62				
ILLINOIS FED. AID PROJECT				



**GENERAL NOTES:**

1. Temporary Drainage - This work consists of furnishing and installing a 3 PVC pipe in the proposed inlet to facilitate drainage off the pavement prior to the placement of bituminous surface course.
2. Adequate pavement drainage shall be maintained during all phases of construction.
3. The PVC pipe is to be filled with mortar prior to surface course placement.
4. This detail applies to all inlet types.

All dimensions are in inches unless otherwise noted.

MODEL: D4-602401  
FILE NAME: c:\p\work\pav\pav\green\mtd1089760\D4-602401.dgn

USER NAME = david.green	DESIGNED -	REVISED -
	DRAWN -	REVISED -
	CHECKED -	REVISED -
PLOT DATE = 5/15/2025	DATE -	REVISED -

**STATE OF ILLINOIS  
DEPARTMENT OF TRANSPORTATION**

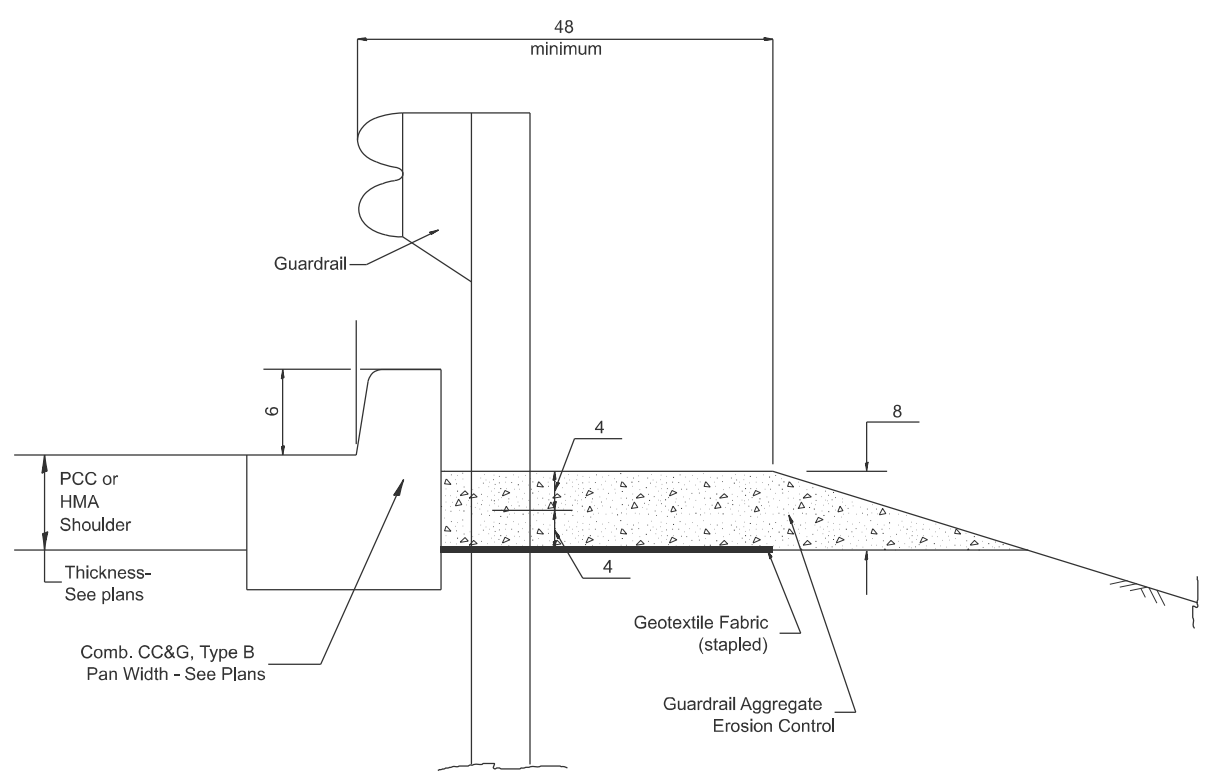
**TEMPORARY INLET DRAINAGE TREATMENT**

SCALE: NOT TO SCALE SHEET 1 OF 6 SHEETS STA. TO STA.

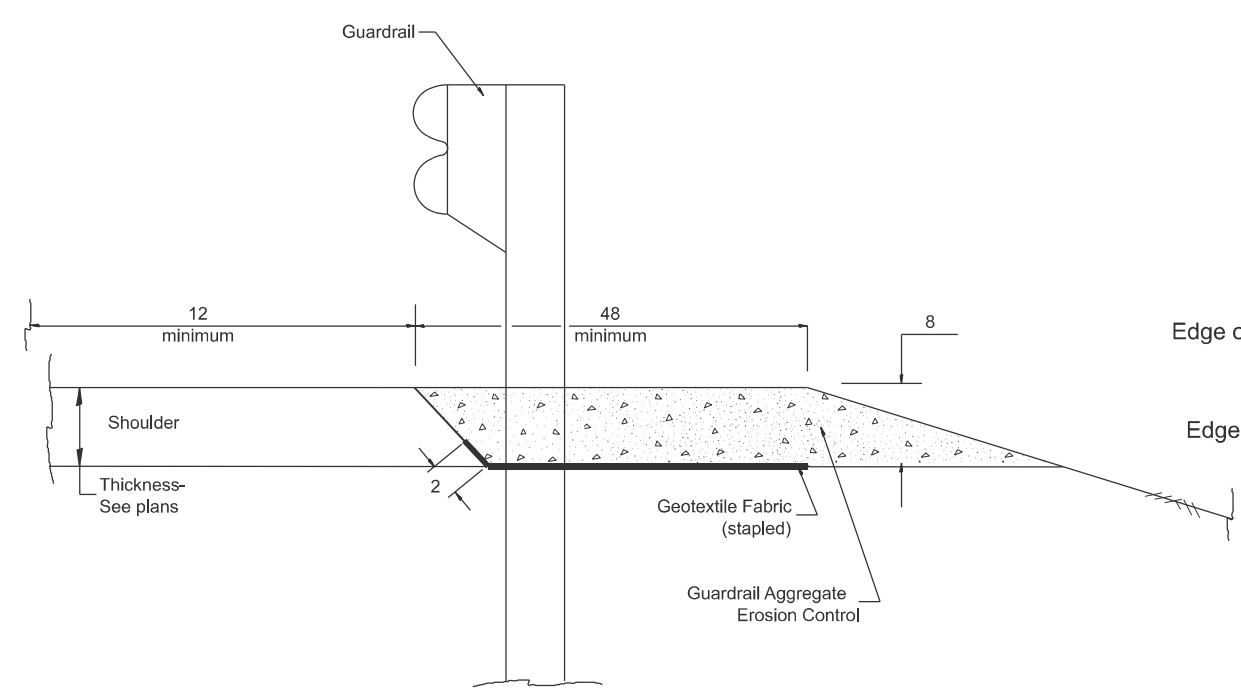
F.A.P. RTE.	SECTION	COUNTY	TOTAL SHEETS	SHEET NO.
671	11RS-6;GRS-3;10RS-9	PEORIA	27	22
DISTRICT 4 DETAIL NO. 602401			CONTRACT NO. 68J62	
ILLINOIS FED. AID PROJECT				

DESIGNER NOTES: 1. CONSIDER USING A "B" CURB PAY ITEM AT GUARDRAIL INSTALLATIONS WHERE GRADES ARE EQUAL TO OR GREATER THAN 1% AND AT INLETS. (INCLUDE DISTRICT SPECIAL PROVISION)  
 2. USE "GUARDRAIL AGGREGATE EROSION CONTROL" AT GUARDRAIL INSTALLATIONS WHERE GRADES ARE LESS THAN 1%. (INCLUDE DISTRICT SPECIAL PROVISION).  
 3. INCLUDE STATE STANDARD 610001, IF APPLICABLE.  
 4. INCLUDE THE FOLLOWING DISTRICT CADD STANDARDS AS NEEDED: SLOPE DRAINS FOR EXPOSED PIPES; CONCRETE THURST BLOCKS AND PIPE ELBOW.  
 5. SEE PAGE COLLARS FOR BURIED PIPES; SLOPE DRAINS FOR EXPOSED PIPES; SLOPE DRAINS FOR BURIED PIPES; SEEPAGE COLLARS FOR BURIED PIPES  
 6. INCLUDE DISTRICT SPECIAL PROVISION - "AGGREGATE QUALITY" FOR PROJECTS LOCATED IN THE WESTERN AREA OF THE DISTRICT - APPROX. DIVIDING LINE IS IL 97.  
 7. DELETE DESIGNER NOTES WHEN INSERTING INTO PLAN FILES.  
 8. OPERATIONS PREFERS USE OF PIPE OUTLETTING ONTO FORESLOPE WITH RIPRAP. USE NON-METALLIC PIPE WHEN POSSIBLE BECAUSE OF FUTURE CORROSION ISSUES.  
 9. THE DISTRICT OFFICE IS PAID FOR ON THE CONTRACT. USE DISTRICT SPECIAL PROVISION FOR SEEDING, MINOR AREAS

MODEL: D4-630101-01  
 FILE NAME: c:\pdx\_work\visioning\Roadway\1111111111.dwg



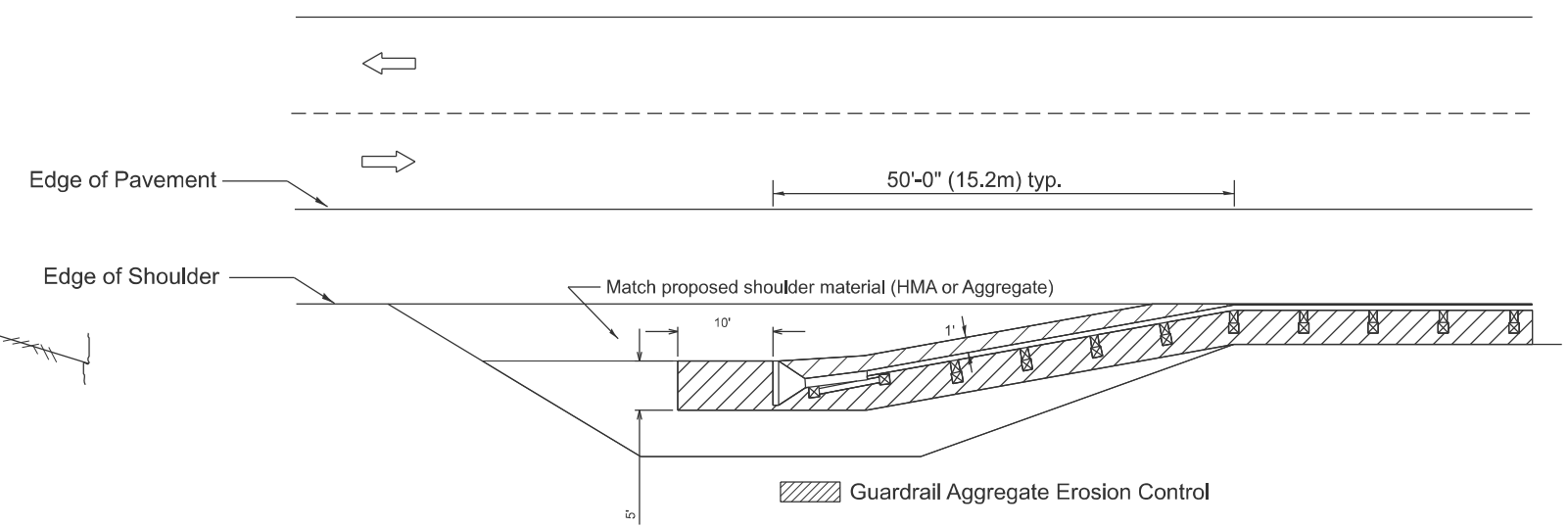
TYPICAL SECTION WITH COMBINATION CONCRETE CURB & GUTTER



TYPICAL SECTION WITHOUT EROSION CONTROL CURB

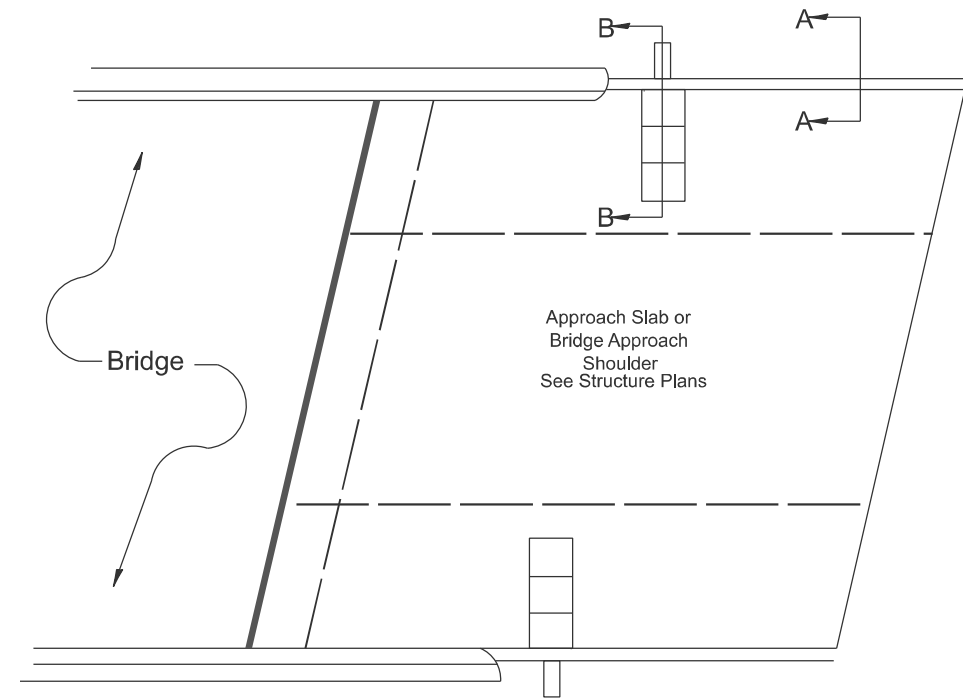
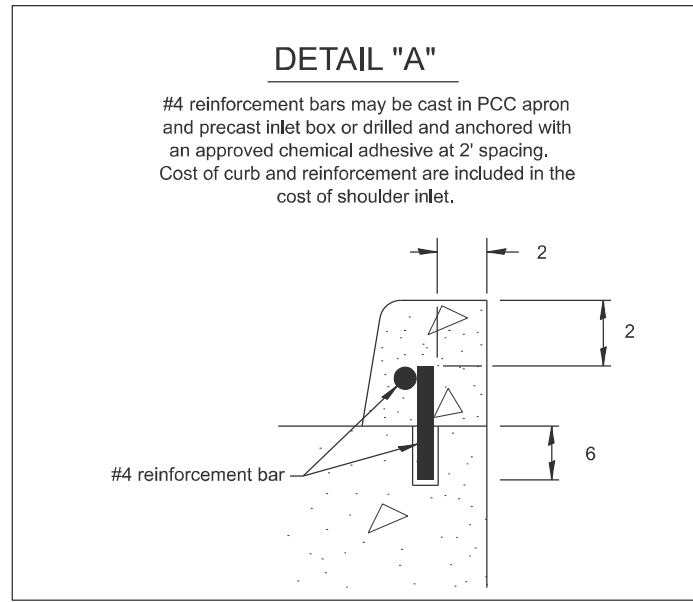
GENERAL NOTES: GUARDRAIL AGGREGATE EROSION CONTROL

1. This work shall consist of grading as needed, furnishing and installing geotextile fabric and staples, and furnishing, placing and shaping crushed aggregate around and behind Steel Plate Beam Guardrail posts in accordance with Plan Details.
2. Before placing the aggregate and the Geotextile Fabric, weeds and grass shall be removed from the area to be covered.
3. After the area has been prepared, and in a dry condition, the Geotextile fabric shall be placed with a 12 minimum overlap. A knife cut for guardrail post installation is necessary.
4. The aggregate shall be deposited, compacted and shaped by either mechanical or hand methods, in a manner reasonably true to line and grade.
5. The Contractor shall have the option of placing the guardrail before or after the Geotextile Fabric and Aggregate are in place. If the guardrail is placed after the Geotextile Fabric and Aggregate, then any voids must be filled and the aggregate returned to line and grade.
6. Materials shall meet the following requirements:
  - A. The crushed aggregate shall be CA1 gradation in accordance with Article 1004.01(c) of the Standard Specifications.
  - B. The Geotextile Fabric shall be nonwoven fabric in accordance with Article 1080.02 of the Standard Specifications.

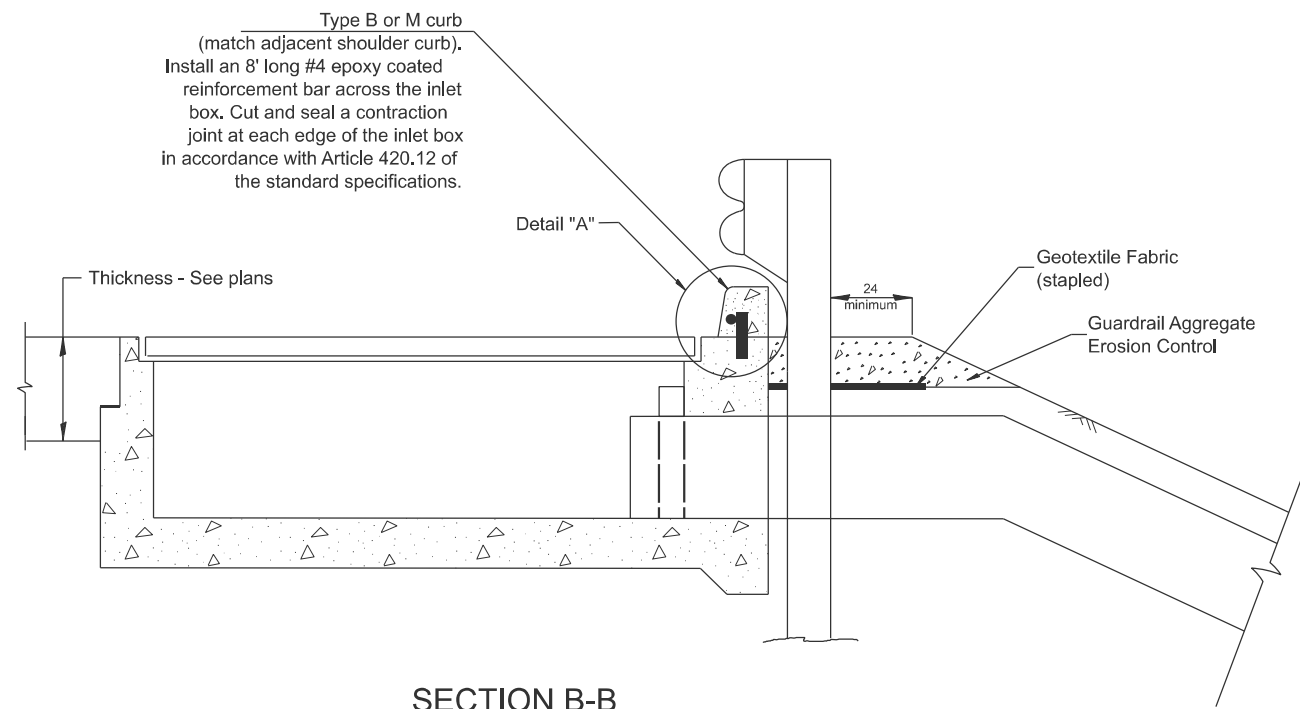


All dimensions are in inches unless otherwise noted.

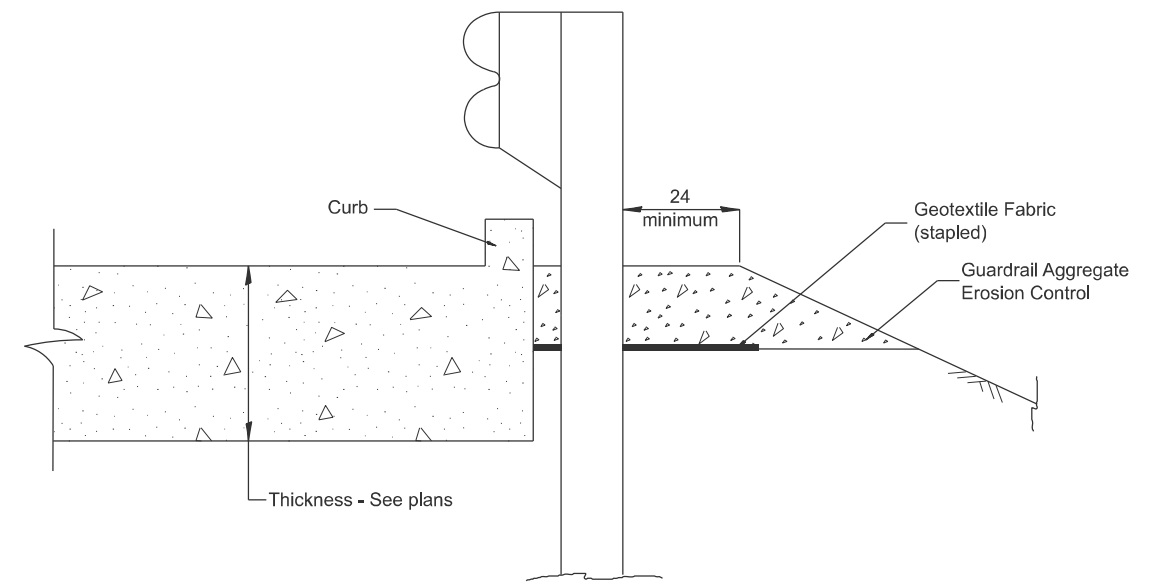
USER NAME = david.green	DESIGNED -	REVISED -	<b>STATE OF ILLINOIS DEPARTMENT OF TRANSPORTATION</b>	<b>GUARDRAIL EROSION CONTROL TREATMENTS</b>			F.A.P. RTE.	SECTION	COUNTY	TOTAL SHEETS	SHEET NO.
DRAWN -	REVISED -	671					11RS-6;GRS-3;10RS-9	PEORIA	27	23	
CHECKED -	REVISED -	SCALE: NOT TO SCALE   SHEET 2 1 OF 62 SHEETS   STA. TO STA.			DISTRICT 4 DETAIL NO. 630101   CONTRACT NO. 68J62						
PLOT DATE = 5/15/2025	DATE -	REVISED -					ILLINOIS   FED. AID PROJECT				



**PLAN VIEW**  
**APPROACH SLAB OR SHOULDER PLACEMENT**



**SECTION B-B**  
**TYPICAL SECTION AT INLETS**  
**TYPE E, F & G (HIGHWAY STANDARD 610001)**



**SECTION A-A**  
**TYPICAL SECTION WITH BRIDGE APPROACH CURB**

All dimensions are in inches unless otherwise noted.

MODEL: D4-630101-02  
FILE NAME: c:\p\work\pav\erod\green\dmd1089760\D4-630101.dgn

USER NAME = david.green	DESIGNED -	REVISED -
	DRAWN -	REVISED -
	CHECKED -	REVISED -
PLOT DATE = 5/22/2025	DATE -	REVISED -

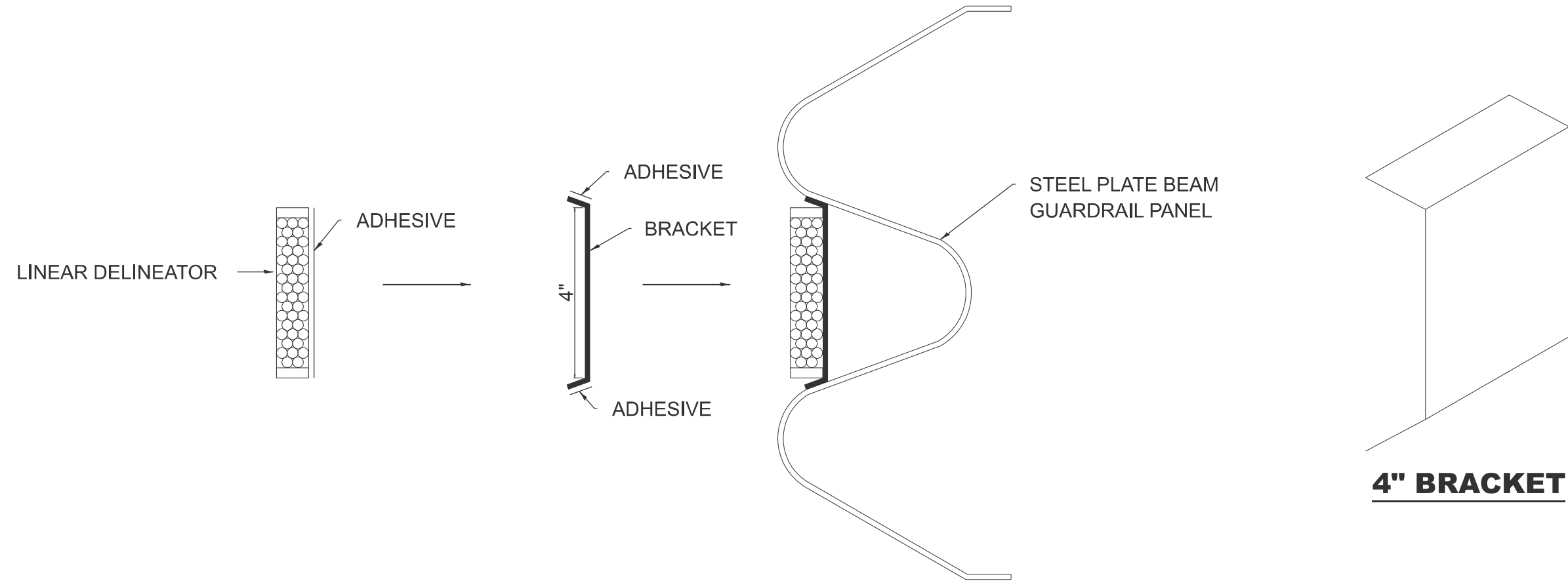
**STATE OF ILLINOIS**  
**DEPARTMENT OF TRANSPORTATION**

**GUARDRAIL EROSION CONTROL TREATMENTS**

SCALE: NOT TO SCALE SHEET 3 2 OF 62 SHEETS STA. TO STA.

F.A.P. RTE.	SECTION	COUNTY	TOTAL SHEETS	SHEET NO.
671	11RS-6;GRS-3;10RS-9	PEORIA	27	24
DISTRICT 4 DETAIL NO. 630101			CONTRACT NO. 68J62	
ILLINOIS FED. AID PROJECT				





# LINEAR DELINEATOR APPLICATION TO STANDARD GALVANIZED GUARDRAIL

LINEAR DELINEATOR SHALL BE APPLIED ACCORDING TO THE MANUFACTURER'S RECOMMENDATIONS

MODEL: Named Boundary Sheet H  
FILE NAME: c:\p\work\wtd\green\mtd1089760\4-635003.dgn

USER NAME = david.green	DESIGNED -	REVISED -
	DRAWN -	REVISED -
	CHECKED -	REVISED -
PLOT DATE = 5/15/2025	DATE -	REVISED -

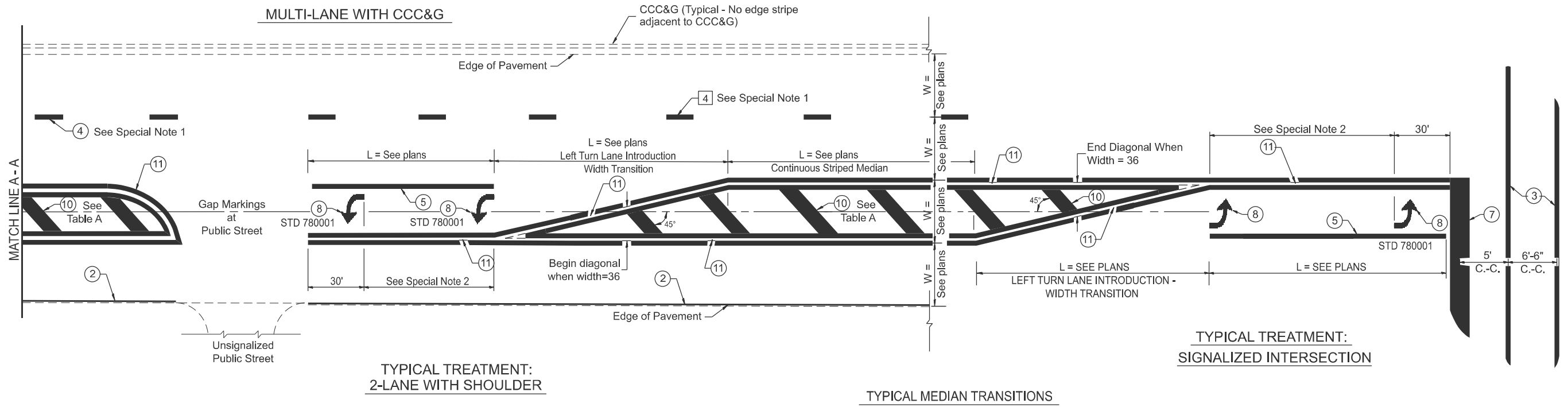
**STATE OF ILLINOIS  
DEPARTMENT OF TRANSPORTATION**

**LINEAR DELINEATOR APPLICATION TO  
STANDARD GALVANIZED GUARDRAIL**

SCALE: NOT TO SCALE SHEET 4 OF 6 SHEETS STA. TO STA.

F.A.P. RTE.	SECTION	COUNTY	TOTAL SHEETS	SHEET NO.
671	11RS-6;GRS-3;10RS-9	PEORIA	27	25
DISTRICT 4 DETAIL NO. 635003		CONTRACT NO. 68J62		
ILLINOIS FED. AID PROJECT				

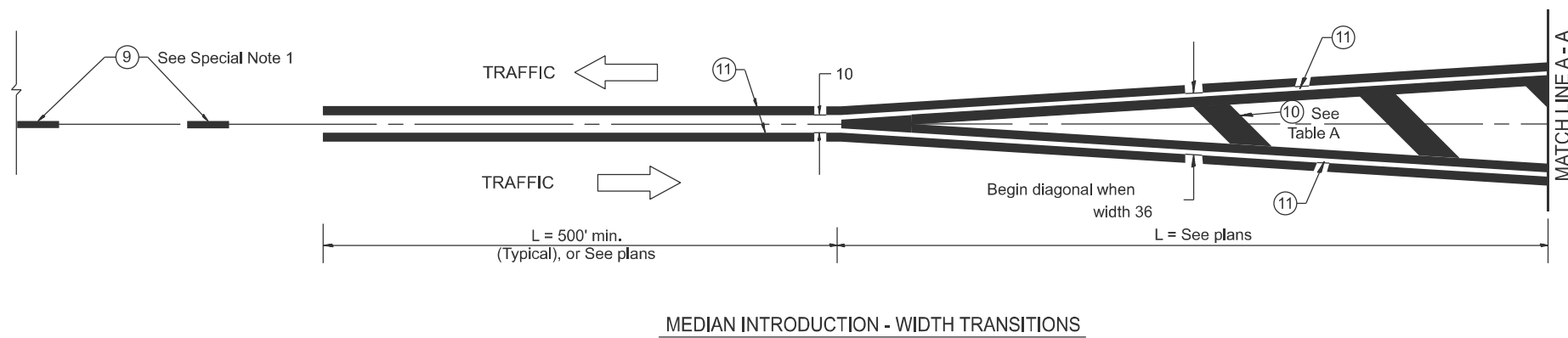




**FLUSH PAVED MEDIAN: RESTRICTED LEFT TURN LANE**

**TABLE A**  
RECOMMENDED SPACING BETWEEN DIAGONAL LINES

SPEED LIMIT RANGE	CONTINUOUS	INTERSECTION CHANNELIZATION (Includes Width Transitions for Median and Left Turn Lane Introductions)	
		5'	6'-6"
Less Than 30 mph	50'	5'	15'
30 - 45 mph	75'	5'	20'
Over 45 mph	150'	5'	30'



All dimensions are in inches unless otherwise noted.

MODEL: D4-780001-02  
FILE NAME: c:\p\work\wv\id\green\dmd1089760\ID4-780001.dgn

USER NAME = david.green	DESIGNED -	REVISED -
	DRAWN -	REVISED -
	CHECKED -	REVISED -
PLOT DATE = 5/15/2025	DATE -	REVISED -

**STATE OF ILLINOIS**  
**DEPARTMENT OF TRANSPORTATION**

**TYPICAL PAVEMENT MARKINGS**

SCALE: NOT TO SCALE SHEET 6 2 OF 62 SHEETS STA. TO STA.

F.A.P. RTE.	SECTION	COUNTY	TOTAL SHEETS	SHEET NO.
671	11RS-6;GRS-3;10RS-9	PEORIA	27	27
DISTRICT 4 DETAIL NO. 780001			CONTRACT NO. 68J62	
ILLINOIS FED. AID PROJECT				