

INDEX OF SHEETS

09-19-2025 LETTING ITEM 083

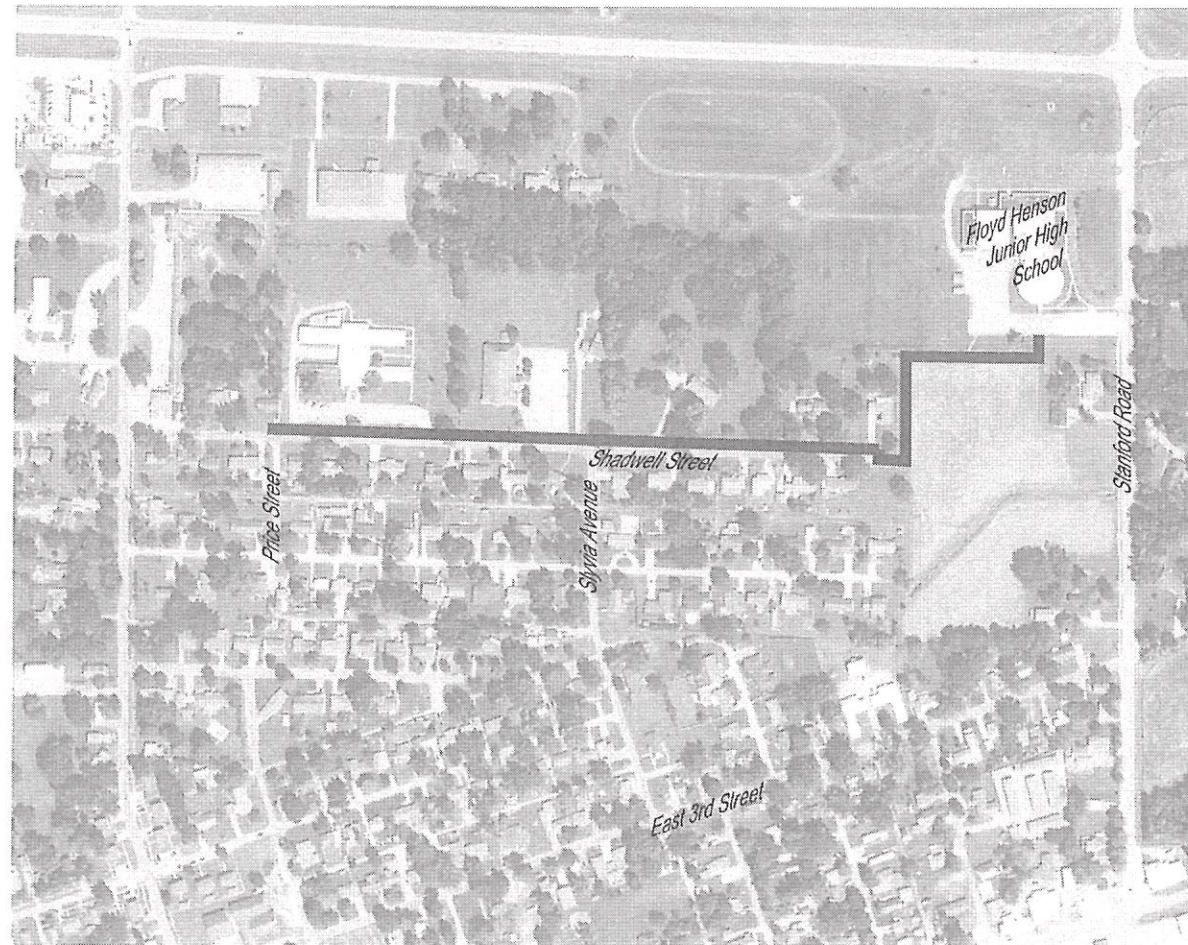
- 1 TITLE
- 2 INDEX OF SHEETS, GENERAL NOTES, & STANDARDS
- 3 TYPICAL DETAILS
- 4 SUMMARY OF QUANTITIES
- 5 SCHEDULE OF QUANTITIES
- 6 TYPICAL SECTION VIEWS
- 7 CONTROL, BENCHMARKS, & ALIGNMENTS
- 8 - 12 SIDEWALK PLANS

HIGHWAY STANDARDS

- 280001-07 Temporary Erosion Control Systems
- 424001-12 Perpendicular Curb Ramps for Sidewalks
- 424011-05 Corner Parallel Curb Ramps for Sidewalks
- 424016-06 Mid-Block Curb Ramps for Sidewalks
- 424021-07 Depressed Corner for Sidewalks
- 424026-04 Entrance/Alley Pedestrian Crossings
- 606001-08 Concrete Curb Type B and Combination Concrete Curb and Gutter
- 701001-02 Off-Road Operations, 2L, 2W, More Than 15' (4.5 m) Away
- 701006-05 Off-Road Operations, 2L, 2W, 15' (4.5 m) to 24" (600 mm) from Pavement Edge
- 701011-05 Off-Road Moving Operations, 2L, 2W, Day Only
- 701301-04 Lane Closure, 2L, 2W, Short Term Operations
- 701501-06 Urban Lane Closure, 2L 2W, Undivided
- 701801-06 Sidewalk, Corner or Crosswalk Closure
- 701901-10 Traffic Control Devices
- 720001-01 Sign Panel Mounting Details
- 720006-04 Sign Panel Erection Details
- 720011-01 Metal Posts for Signs, Markers & Delineators
- 728001-01 Telescoping Steel Sign Support
- BLR 21-9 Typical Application of Traffic Control Devices for Construction on Rural Local Highways

**STATE OF ILLINOIS
DEPARTMENT OF TRANSPORTATION
SAFE ROUTES TO SCHOOL
T3N, R6E, SECTION 25
SECTION 24-00067-00-SW
JOB NO. C-97-042-25
PROJECT NO. KRD4(548)
CITY OF FLORA
CLAY COUNTY, ILLINOIS
CONTRACT 95988**

Contacts for Utilities
 Clearwave Communications - Marcus Burrell - (470) 990-1754
 Frontier Communications - Kalin Hinshaw - (815) 895-1515
 Metro Communications - Laren Sesko - (217) 728-3621
 Wabash Communications - Steve Hosselton - (618) 665-3311
 City of Flora - Toby Reinhart - (618) 662-4625



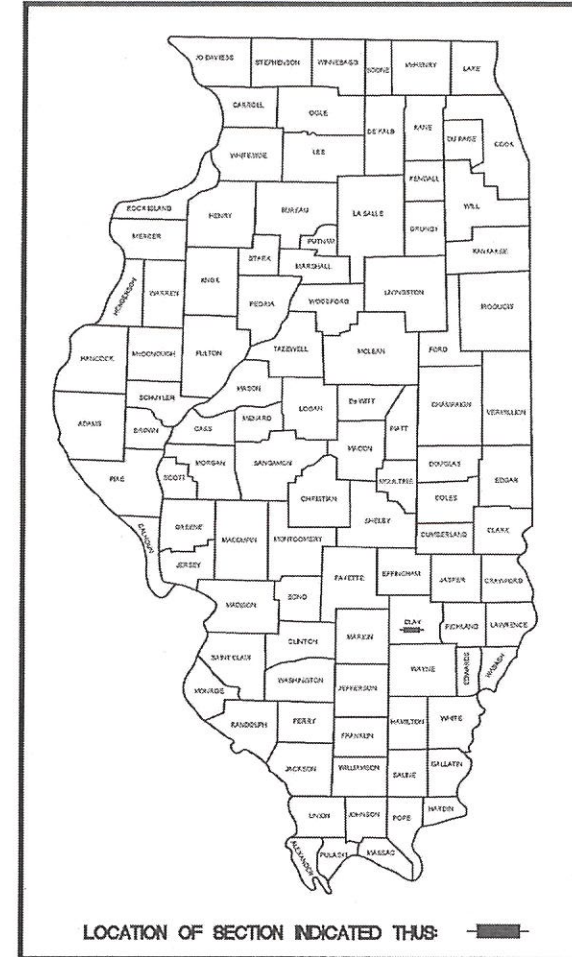
PROJECT AREA PHASE 1

LOCATION MAP
CITY OF FLORA

LENGTH OF PROJECT PHASE 1
 SHADWELL STREET = 1637.90 FEET (0.32 MILES)
 PATH TO SCHOOL = 800.72 FEET (0.16 MILES)
 TOTAL = 2,438.62 FEET (0.46 MILES)

SHADWELL STREET
 ANNUAL AVERAGE DAILY TRAFFIC - 400 VPD
 ROADWAY FUNCTIONAL CLASS - LOCAL ROAD
 DESIGN SPEED - 35 MPH

ROUTE NO.	SECTION	COUNTY	TOTAL SHEETS	SHEET NO.
S.B.L. E.A.	24-00067-00-SW	CLAY	12	1
FED. ROAD DIST. NO. 7	BL2025	CONTRACT #95988		



APPROVED R. Sloan 7-7-25
 MAYOR, CITY OF FLORA

PASSED 07/09/25
Eric Hinkle
 DISTRICT SEVEN ENGINEER OF LOCAL ROADS & STREETS

Releasing For Bid Based on Limited Review 07/09/25
Tom King / BW
 REGION FOUR ENGINEER

STATE OF ILLINOIS
 DEPARTMENT OF TRANSPORTATION



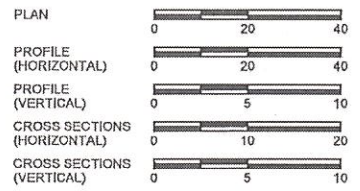
Mitch J. Hardiek
 Mitchel J. Hardiek
 My License Expires 11-30-25
 P.E. No. 77560

DESIGN STAGE J.U.L.I.E. DIG NUMBER
 DIG # A242221382

J.U.L.I.E.
 JOINT UTILITY LOCATION INFORMATION FOR EXCAVATION
 1-800-892-0123

UTILITY NOTE

THE LOCATIONS OF THOSE BURIED AND ABOVEGROUND UTILITIES SHOWN ARE APPROXIMATE, ARE SHOWN FOR CONTRACTOR INFORMATIONAL USE ONLY, AND ARE NOT TO BE REFERENCED FOR CONSTRUCTION PURPOSES. THE IMPLIED PRESENCE OR ABSENCE OF UTILITIES IS NOT TO BE CONSTRUED BY THE OWNER, ENGINEER, CONTRACTOR, OR SUBCONTRACTORS TO BE AN ACCURATE AND COMPLETE REPRESENTATION OF UTILITIES THAT MAY OR MAY NOT EXIST ON THE CONSTRUCTION SITE. BURIED AND ABOVEGROUND UTILITY LOCATION, IDENTIFICATION, AND MARKING ARE THE SOLE RESPONSIBILITY OF THE CONTRACTOR. REROUTING, DISCONNECTION, PROTECTION, ETC. OF ANY UTILITIES MUST BE COORDINATED BETWEEN THE CONTRACTOR, UTILITY COMPANY, AND OWNER. SITE SAFETY, INCLUDING THE AVOIDANCE OF HAZARDS ASSOCIATED WITH BURIED AND ABOVEGROUND UTILITIES, REMAIN THE SOLE RESPONSIBILITY OF THE CONTRACTOR. CONTRACTOR MUST CONTACT J.U.L.I.E. 48 HOURS PRIOR TO THE BEGINNING OF CONSTRUCTION.



Contract No. 95988

FIELD BOOK	855, 858, 862
DRAWN BY	JCS
CHECKED BY	MJH
FILE LOCATION	S:\022325\09\06\TITLE.DWG
PLOT DATE	7/2/2025 1:05 PM
MILANO & GRUNLOH ENGINEERS, LLC	114 W. WASHINGTON AVE. PO BOX 937
EFFINGHAM, IL 62401	Phone: (217) 347-7262 (800) 677-2714
	Email: mge@engr.com www.mge.com
	Web: www.mge.com
	Design Firm # 184-003108

SHEET #
 1 OF 12
 M&G JOB #
 23281

ROUTE NO.	SECTION	COUNTY	TOTAL SHEETS	SHEET NO.
S.B.I. F.A.	24-00067 00-SW	CLAY	12	2
FED. ROAD DIST. NO. 7		ILLINOIS	CONTRACT #95988	

COMMITMENTS

1. Trees three inches or greater at breast height shall not be cleared from April 1 Through September 30 of any given year.

GENERAL NOTES

1. Pavement grades shown are at the top of pavement surfaces, unless otherwise noted in the plans.
2. Erosion control measures shall be in accordance with IDOT Specification. Placement shall be directed by the Engineer.
3. All elevations refer to U.S.G.S. mean sea level datum. - NAVD88
4. Any Reference to a standard in the plans shall be interpreted to mean the edition as indicated by the sub-number listed on Sheet. 2.
5. CURB AND GUTTER, WALKS, SLABS, AND PCC DRIVEWAY PAVEMENT
 - a. Concrete walks shall be in accordance with IDOT Std. Spec. Unless otherwise shown, locates sidewalk contraction joints at 5 ft on center and expansion joints at 50 ft on center, unless otherwise shown, locate contraction joints in larger slabs at 12 ft intervals in each direction.
 - b. Concrete walks crossing through entrances shall be constructed in accordance with the section views shown on sheet 3. Monolithically constructed sidewalks will not be allowed if greater than 2% cross slope.
 - c. Dowel bars shall be used when Portland Cement Concrete Driveways are placed adjacent to any existing concrete. The dowel bars shall be 2 ft in length and shall be placed on 2 ft centers. The dowel bars shall be included in the price of the Portland Cement Concrete Driveway of the type and depth specified.
6. The following rates of application or units were used for calculating plan quantities.
 - Aggregate Surface Course (Type B), Rock Fill, Aggregate Temporary Access - 2.05 Tons/Cu Yd.
7. All brick and landscaping removal shall be incidental to project.
8. Abbreviations:

Abbreviations are per IDOT's Coded Pay Item Listing found at: idot.illinois.gov (Search: IDOT Coded Pay Items)
Other Common Abbreviations:

- BKCB - Back of Curb
- BKSW - Back of Sidewalk
- FCSW - Face of Sidewalk
- EX - Existing
- ME - Match Existing Grade
- EOP - Edge of Pavement
- FL - Flowline
- PCC - Portland Cement Concrete
- REM - Remove
- REL - Relocate

<u>LEGEND</u>	
●	IRON PIN SET
○	IRON PIN FOUND
🌳	TREE (DECIDUOUS)
🔥	FIRE HYDRANT
⊠	WATER METER
⊗	VALVE (GAS OR WATER)
⊠	GAS METER
○ GAS	GAS MARKER
□ T	TELEPHONE PEDESTAL
○	POWER POLE
←	GUY ANCHOR
□ E	ELECTRIC PEDESTAL
📏	SIGN
⊙	WOOD POST
⊙	SANITARY MANHOLE
—) —	SANITARY SEWER
—) —	STORM SEWER
— T —	EXISTING TELE-COMMUNICATIONS LINE
— F —	EXISTING FIBER OPTIC LINE
x 100.00	PROPOSED ELEVATION
x 100.00 (FL)	PROPOSED ELEVATION AT FLOWLINE
x 100.00	EXISTING ELEVATION
x 100.00 (M.E.)	MATCH EXISTING ELEVATION
x 100.00 (M.E.)/(FL)	MATCH EXISTING ELEVATION AT FLOWLINE
1.00% →	PROPOSED GRADE (ARROW DIRECTION TO PATH OF WATER FLOW)

REVISION ISSUED	
DATE	
BY	
FIELD BOOK	855, 858, 862
DRAWN BY	JCS
CHECKED BY	MJH
FILE LOCATION	S:\2023\281\DWG\TITLE.DWG
PLOT DATE	6/30/2025 7:55 AM
MILANO & GRUNLOH ENGINEERS, LLC 114 W. WASHINGTON AVE. PO BOX 897 EFFINGHAM, IL 62401 Phone: (217) 347-7262 (800) 677-2714 Email: mgenr@mgengineers.com Web: www.mgengineers.com Design Firm # 184-003108	
INDEX OF SHEETS, GENERAL NOTES, & STANDARDS ITEP 24-00067-00-SW FLORA, ILLINOIS	
SHEET #	2 OF 12
M&G JOB #	23281

ROUTE NO.	SECTION	COUNTY	TOTAL SHEETS	SHEET NO.
S.B.I.	24-0067	CLAY	12	5
F.A.	00-SW			
FED. ROAD DIST. NO. 7	ILLINOIS	CONTRACT #95988		

PAVEMENT REMOVAL			
STATION	OFFSET	DRIVEWAY PAVEMENT REMOVAL	SIDEWALK REMOVAL
		44000200	44000600
		SQ YD	SQ FT
121+80.25 - 122+07.25	11.44 - 27.00 LT	32	
122+10.23 - 122+58.74	11.44 - 27.00 LT	57	
125+85.16 - 126+21.90	10.82 - 27.01 LT	54	
128+59.80 - 128+99.53	8.81 - 20.92 LT	40	
129+49.09 - 129+87.38	7.85 - 21.22 LT	43	
129+92.70 - 130+13.52	8.23 - 21.49 LT	24	
135+38.40 - 135+65.93	6.78 - 27.00 LT	37	
138+09.11 - 138+45.20	1.74 - 6.08 RT		138
138+45.07 - 138+78.26	2.16 - 6.45 RT		133
150+04.11 - 157+01.58	10.00 - 18.56 LT		2710
TOTALS		287	2981


PAVEMENT				
STATION	OFFSET	PORTLAND CEMENT CONCRETE DRIVEWAY PAVEMENT, 6 INCH	PORTLAND CEMENT CONCRETE SIDEWALK 4 INCH	PORTLAND CEMENT CONCRETE SIDEWALK 6 INCH
		42300200	42400100	42400300
		SQ YD	SQ FT	SQ FT
121+83.18 - 122+07.78	11.44 - 22.00 LT	21		72
121+88.30 - 122+02.61	22.00 - 27.00 LT		106	
122+02.66 - 122+23.92	22.00 - 27.00 LT			
122+10.19 - 122+58.97	11.43 - 22.00 LT	43		148
122+23.92 - 122+53.53	22.00 - 27.00 LT			
122+53.53 - 125+84.43	22.00 - 27.00 LT		1655	
125+76.87 - 126+19.01	10.83 - 22.00 LT	40		
125+84.43 - 126+09.39	22.00 - 27.00 LT			125
126+09.39 - 128+65.00	15.78 - 22.00 LT		1285	
128+61.24 - 128+94.16	9.01 - 16.17 LT	26		
128+65.00 - 128+94.14	15.78 - 20.93 LT			145
128+94.16 - 129+54.72	15.92 - 21.22 LT		303	
129+50.68 - 129+81.71	8.08 - 16.35 LT	28		
129+54.65 - 130+12.03	16.50 - 21.22 LT			285
129+93.24 - 130+12.03	8.03 - 16.50 LT	17		
130+12.03 - 131+91.68	16.50 - 27.00 LT		903	
131+74.42 - 132+07.11	6.50 - 22.00 LT	34		
131+91.68 - 132+07.11	22.00 - 27.00 LT			92
132+07.11 - 135+47.66	22.00 - 27.00 LT		1668	
135+39.82 - 135+59.89	7.48 - 22.00 LT	30		
135+47.66 - 135+59.89	22.00 - 27.00 LT			61
135+59.89 - 137+81.85	22.00 - 27.00 LT		1110	
137+77.64 - 138+01.87	5.46 - 22.00 LT	36		
137+81.85 - 137+98.87	22.00 - 27.00 LT			85
137+98.87 - 138+14.11	22.00 LT - 0.56 RT		188	
138+09.18 - 138+87.10	0.49 - 6.57 RT		387	
138+86.95 - 152+55.23	1.57 - 15.00 LT		1235	
152+55.23 - 157+02.00	10.00 - 15.00 LT		2224	
TOTALS		275	11064	1013

STORM WATER						
STATION	OFFSET	PIPE CULVERT REMOVAL	PIPE CULVERTS, CLASS A, TYPE 1 12"	STORM SEWERS, RUBBER GASKET, CLASS A, TYPE 1 12"	INLETS, TYPE A, TYPE 8 GRATE	TRENCH DRAIN
		50105220	542A0217	550A2320	60236200	X6010202
		FOOT	FOOT	FOOT	EACH	EACH
121+85.89 - 122+05.81	18.29 - 18.75 LT	20				
121+85.89 - 122+03.90	18.29 - 18.39 LT		18			
122+13.29	24.50 LT					1
122+18.00 - 122+54.13	18.45 - 18.65 LT		36			
122+18.25 - 122+52.68	19.39 - 20.02 LT	34				
125+80.81 - 126+14.81	17.42 - 17.82 LT		34			
125+82.72 - 126+12.14	20.57 - 21.08 LT	30				
128+60.47 - 129+26.40	12.57 - 12.94 LT			66		
128+65.14 - 128+94.72	15.70 - 16.70 LT	30				
129+26.40	12.57 LT				1	
129+26.40 - 129+88.53	12.57 - 13.29 LT			62		
129+54.53 - 129+83.90	14.88 - 15.21 LT	29				
129+88.53	13.29 LT				1	
129+88.53 - 129+88.16	13.29 -25.63 LT			12		
129+88.53 - 130+15.86	13.29 - 14.35 LT			27		
129+88.84	18.89 LT					1
129+94.16 - 130+14.08	14.60 - 14.73 LT	20				
130+16.70	20.38 LT					1
131+80.12 - 132+05.40	13.42 - 14.15 LT		25			
131+81.71 - 132+05.40	13.42 - 14.17 LT	24				
135+42.63 - 135+66.02	16.03 - 16.81 LT	23		23		
137+77.86 - 138+02.67	10.88 - 11.05 LT	25				
137+77.86 - 138+15.87	10.63 - 11.05 LT		38			
TOTALS		235	174	167	2	3

UTILITIES			
STATION	OFFSET	DOMESTIC METER VAULTS TO BE ADJUSTED	VALVE VAULTS TO BE ADJUSTED
		56500300	60265700
		EACH	EACH
135+20.19	21.98 LT		1
136+18.27	27.21 LT	1	
TOTALS		1	1

REVISION ISSUED	BY	DATE	
FIELD BOOK	855, 858, 862		
DRAWN BY	JCS		
CHECKED BY	MJH		
FILE LOCATION	S:\2023\281\DWG\TITLE.DWG		
PLOT DATE	6/30/2025 7:55 AM		

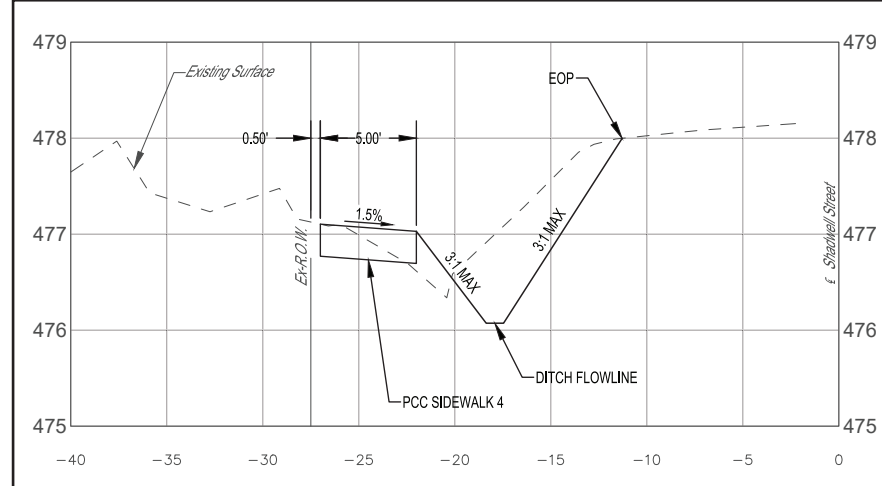
MILANO & GRUNLOH ENGINEERS, LLC
 114 W. WASHINGTON AVE. | PO BOX 897
 EFFINGHAM, IL 62401
 Phone: (217) 347-7262 | (800) 677-2714
 Email: mgenr@mgengr.com
 Web: www.mgenr.com
 Design Firm # 184-003108



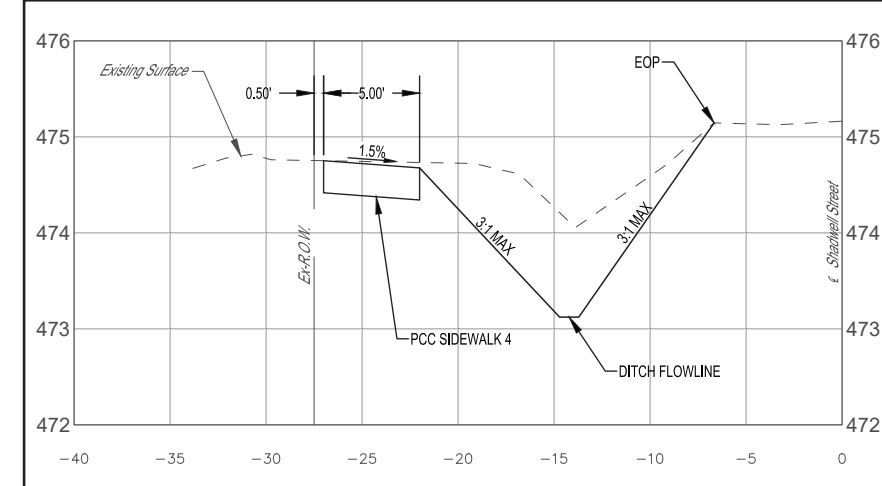
SCHEDULE OF QUANTITIES	ITEP
	24-0067-00-SW
	FLORA, ILLINOIS

SHEET #
5 OF 12
M&G JOB #
23281

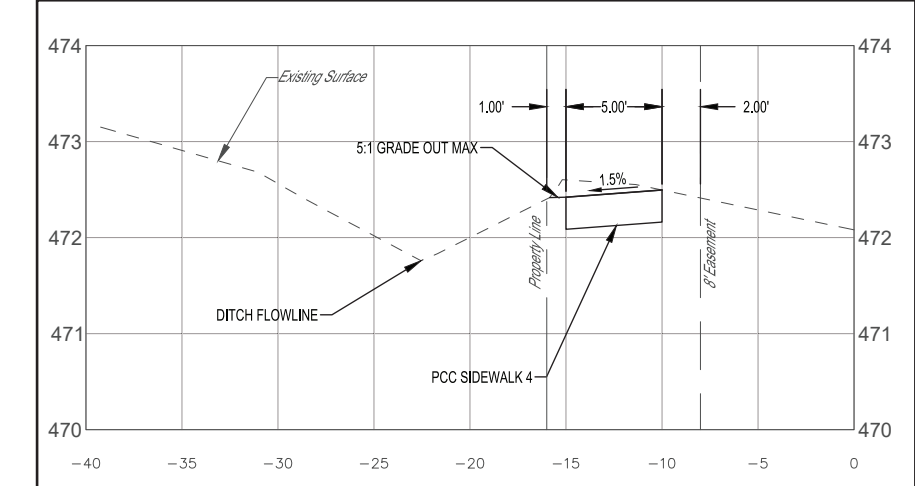
ROUTE NO.	SECTION	COUNTY	TOTAL SHEETS	SHEET NO.
S.B.I.	24-00067	CLAY	12	6
F.A.	06-SW			
FED. ROAD DIST. NO. 7		ILLINOIS	CONTRACT #95988	



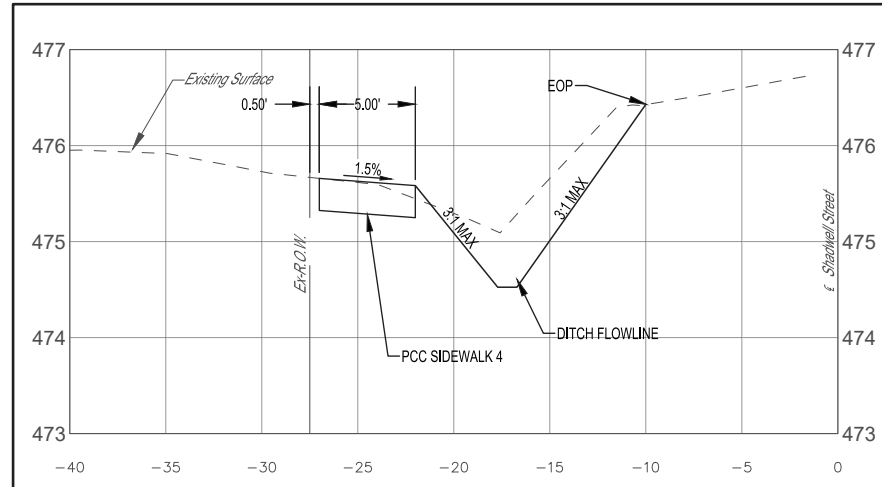
SECTION VIEW
STATION: 122+50 - 126+00



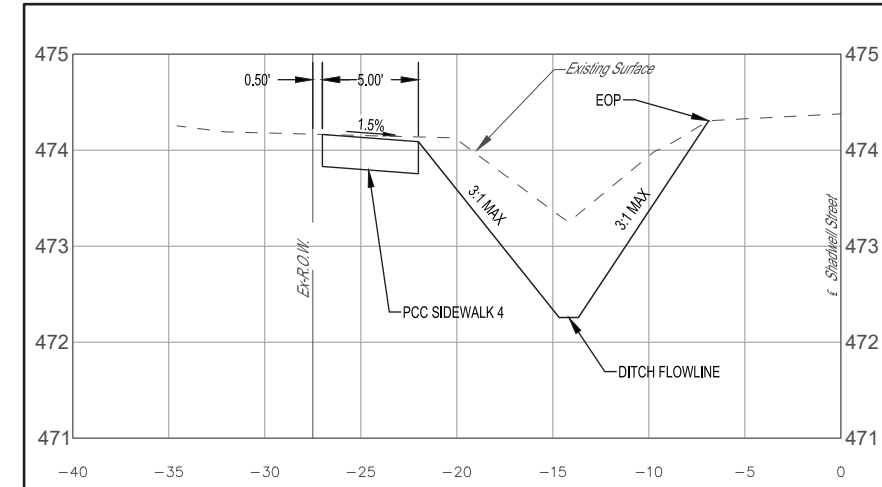
SECTION VIEW
STATION: 130+20 - 133+00



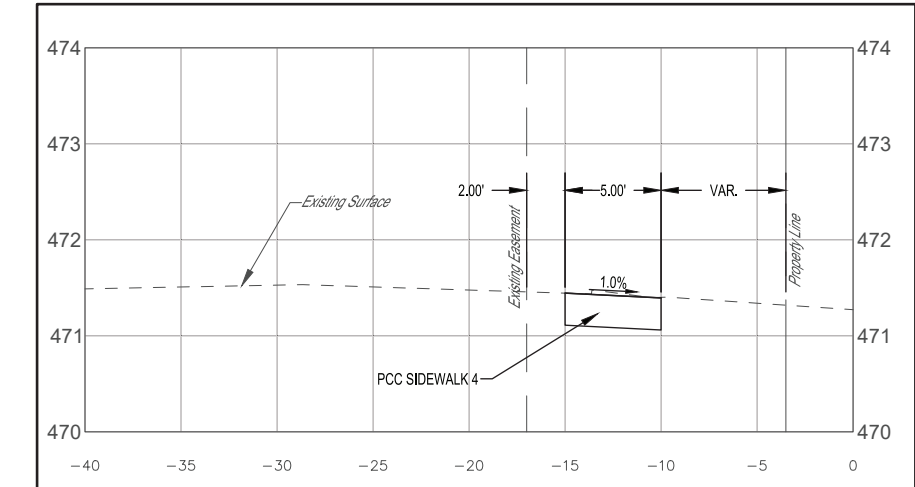
SECTION VIEW
STATION: 150+00 - 152+70



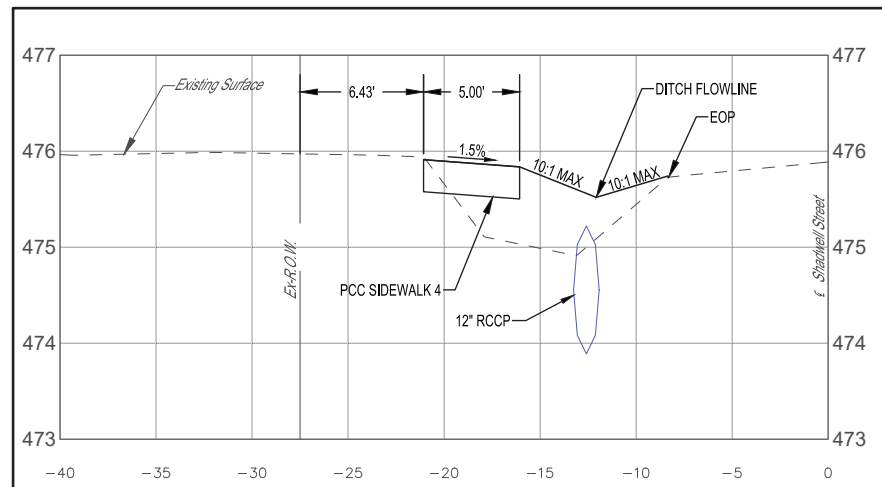
SECTION VIEW
STATION: 126+00 - 128+70



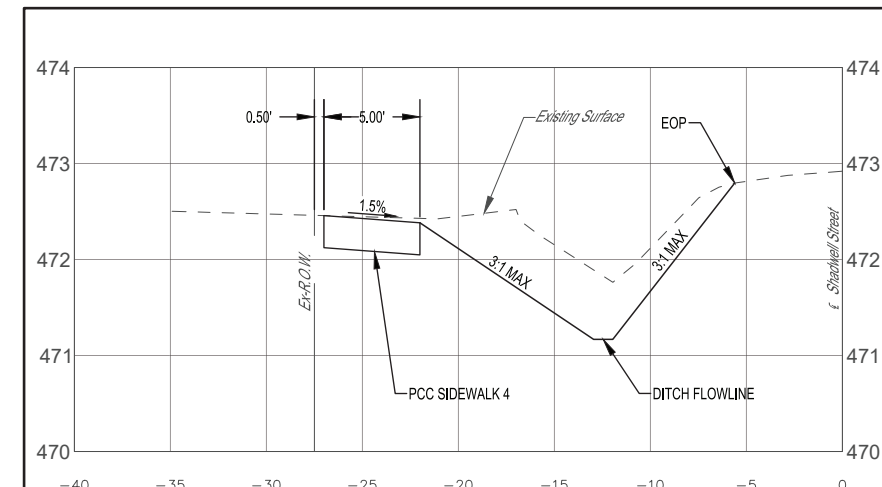
SECTION VIEW
STATION: 133+00 - 135+50



SECTION VIEW
STATION: 152+70 - 157+02



SECTION VIEW
STATION: 128+70 - 130+20



SECTION VIEW
STATION: 135+50 - 138+00

BY	DATE	REVISION	ISSUED

FIELD BOOK	855, 868, 862
DRAWN BY	JCS
CHECKED BY	MJH
FILE LOCATION	S:\2023\2810\N\TITLE.DWG
PLOT DATE	6/30/2025 7:55 AM

MILANO & GRUNLOH ENGINEERS, LLC
114 W. WASHINGTON AVE. | PO BOX 887
EFFINGHAM, IL 62401
Phone: (217) 347-7262 | (800) 677-2714
Email: mgeengineers@gmail.com
Web: www.mgeengineers.com
Design Firm # 184-003108



TYPICAL SECTION VIEWS
ITP
24-00067-00-SW
FLORA, ILLINOIS

ROUTE NO.	SECTION	COUNTY	TOTAL SHEETS	SHEET NO.
S.B.I.	24-00067	CLAY	12	7
F.A.	00-SW			
FED. ROAD DIST. NO. 7	ILLINOIS	CONTRACT #95988		



Point Table				
Point #	Northing	Easting	Elevation	Description
4	732183.51	945167.16	471.49	SAWED "X" BM2
5	732175.50	945087.78	471.42	IRON PIN AS CP5
6	732176.64	944748.83	471.96	SAWED "X" BM3
8	731816.42	944544.34	474.02	WEST BOLT OF FIRE HYDRANT BM4
9	731830.86	944306.57	472.41	IRON PIN AS CP9
10	731878.25	944052.56	474.00	SAWED "X" BM5
11	731852.62	943654.46	474.71	IRON PIN AS CP11
12	731889.93	943381.90	476.55	MAG NAIL SET IN HMA AS BM6
13	731877.72	943088.39	477.26	IRON PIN AS CP13
14	731924.93	942896.00	479.24	MAG NAIL SET IN S FACE OF PP AS BM7
15	731890.84	942498.38	481.43	IRON PIN AS CP15

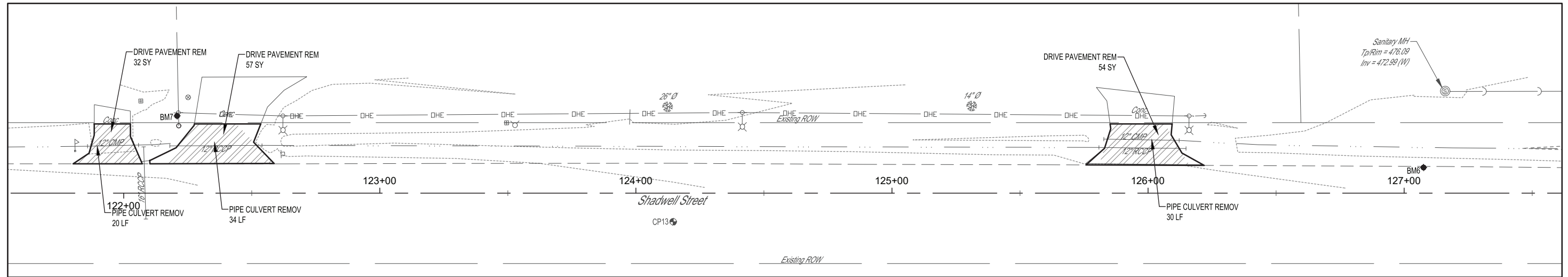
BENCHMARKS		
BM NO.	ELEVATION	DESCRIPTION
BM2	471.49	SAWED "X" ON EAST SIDE OF NORTH STANFORD ON TOP CURB EAST OF JR. HIGH PARKING LOT
BM3	471.96	SAWED "X" ON SOUTHWEST CORNER OF SOUTH PARKING LOT OF FLOYD HENSON JR HIGH.
BM4	474.02	WEST BOLT OF FIRE HYDRANT SOUTH OF LETTERS "SR" SOUTHWEST OF END OF SHADWELL STREET
BM5	474.00	SAWED "X" ON SOUTHEAST SIDE OF CIRCULAR CONE FOUNDATION WITH METAL LID ON NORTH SIDE OF SHADWELL STREET
BM6	476.55	MAGNAIL SET ON NORTH EDGE OF HMA ROAD SHADWELL STREET
BM7	479.24	MAGNAIL SET ON SOUTH FACE OF POWERPOLE ON NORTH SIDE OF SHADWELL STREET

MILANO & GRUNLOH ENGINEERS, LLC
114 W. WASHINGTON AVE. | PO BOX 897
EFFINGHAM, IL 62401
Phone: (217) 347-7262 | (800) 677-2714
Email: mgen@engr.com
Web: www.mgen.com
Design Firm # 184-003108

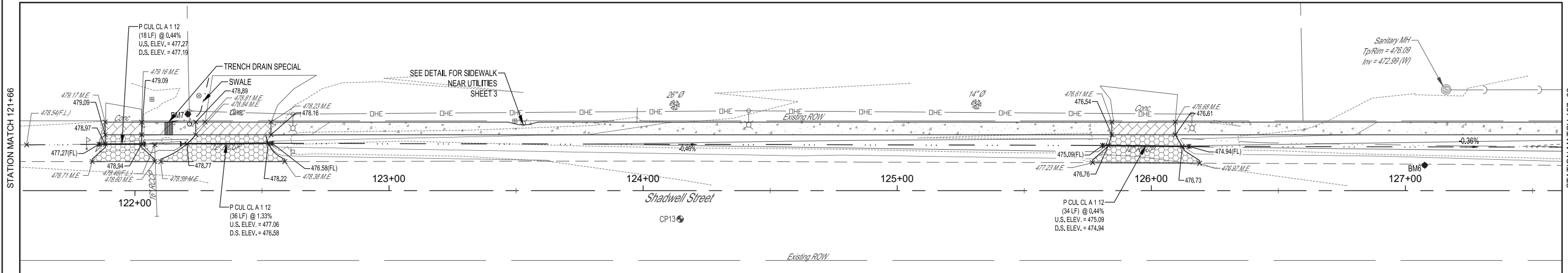


ROUTE NO.	SECTION	COUNTY	TOTAL SHEETS	SHEET NO.
S.B.I.	24-00067	CLAY	12	8
F.A.	06-SW			
FED. ROAD DIST. NO. 7	ILLINOIS	CONTRACT #95988		

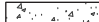






REMOVAL PLAN



SIDEWALK PLAN



LEGEND

-  PC CONC SIDEWALK 4
-  PC CONC SIDEWALK 6
-  PCC DRIVEWAY PAVT 6
-  DETECTABLE WARNING
-  EXISTING SW REMOVAL
-  DRIVE PAVEMENT REMOVAL
-  LANDING/TURNING SPACE

REVISION	DATE	ISSUED

FIELD BOOK 885, 888, 882
 DRAWN BY JCS
 CHECKED BY MJH
 FILE LOCATION S:\2023\24\06\24-00067\DWG\SIDEWALK.DWG
 PLOT DATE 6/30/2025 7:55 AM

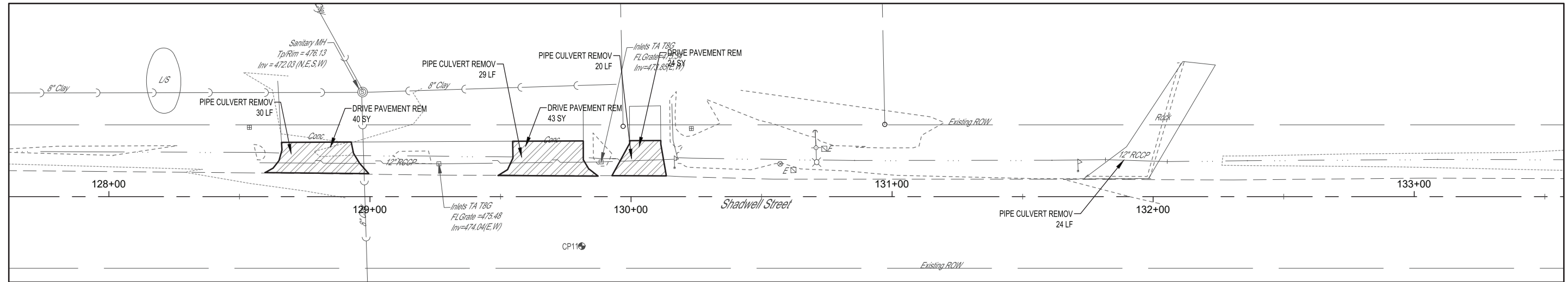


MILANO & GRUNLOH ENGINEERS, LLC
 114 W. WASHINGTON AVE. | PO BOX 897
 EFFINGHAM, IL 62401
 Phone: (217) 347-7262 | (800) 677-2714
 Email: mgeengineers@mgeengineers.com
 Web: www.mgeengineers.com
 Design Firm # 184-003108

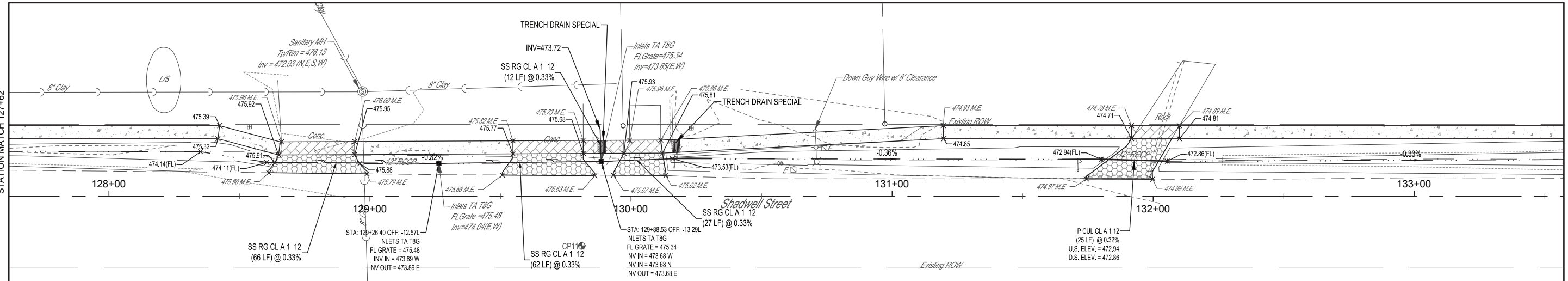
SIDEWALK PLANS	SHEET #
ITEP	8 OF 12
24-00067-00-SW	M&G JOB #
FLORA, ILLINOIS	23281

ROUTE NO.	SECTION	COUNTY	TOTAL SHEETS	SHEET NO.
S.B.I.	24-0067	CLAY	12	9
F.A.	05-SW			
FED. ROAD DIST. NO. 7	ILLINOIS	CONTRACT #95988		

REMOVAL PLAN



SIDEWALK PLAN



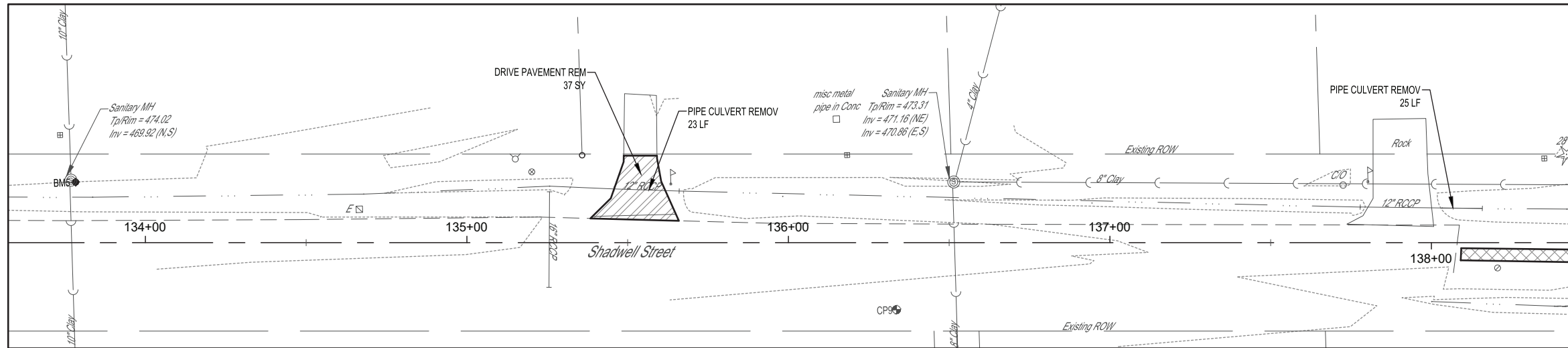
N

LEGEND	
	PC CONC SIDEWALK 4
	PC CONC SIDEWALK 6
	PCC DRIVEWAY PAVT 6
	DETECTABLE WARNING
	EXISTING SW REMOVAL
	DRIVEWAY REMOVAL
	LANDING/TURNING SPACE

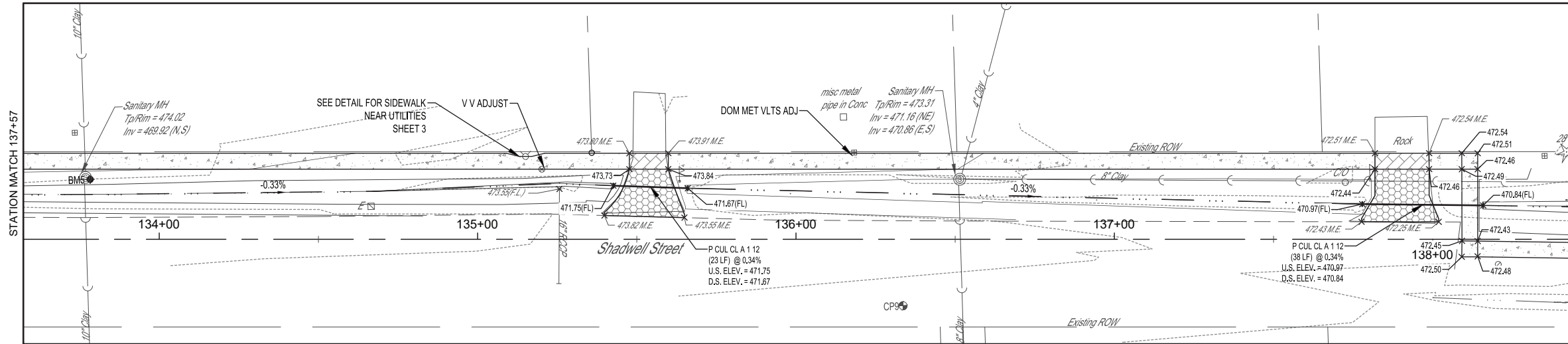
REVISION	DATE	BY	DATE	BY	DATE	BY	DATE		
<table border="0" style="width: 100%;"> <tr> <td style="width: 50%;"> <p>FIELD BOOK: 855, 858, 862</p> <p>DRAWN BY: JCS</p> <p>CHECKED BY: MJH</p> <p>FILE LOCATION: S:\2023\281\DWG\SIDEWALK.DWG</p> <p>PLOT DATE: 6/30/2025 7:56 AM</p> </td> <td style="width: 50%;"> <p>MILANO & GRUNLOH ENGINEERS, LLC 114 W. WASHINGTON AVE. PO BOX 887 EFFINGHAM, IL 62401 Phone: (217) 347-7262 (800) 677-2714 Email: mgenr@milengr.com Web: www.milengr.com Design Firm # 184-003108</p> </td> </tr> </table>								<p>FIELD BOOK: 855, 858, 862</p> <p>DRAWN BY: JCS</p> <p>CHECKED BY: MJH</p> <p>FILE LOCATION: S:\2023\281\DWG\SIDEWALK.DWG</p> <p>PLOT DATE: 6/30/2025 7:56 AM</p>	<p>MILANO & GRUNLOH ENGINEERS, LLC 114 W. WASHINGTON AVE. PO BOX 887 EFFINGHAM, IL 62401 Phone: (217) 347-7262 (800) 677-2714 Email: mgenr@milengr.com Web: www.milengr.com Design Firm # 184-003108</p>
<p>FIELD BOOK: 855, 858, 862</p> <p>DRAWN BY: JCS</p> <p>CHECKED BY: MJH</p> <p>FILE LOCATION: S:\2023\281\DWG\SIDEWALK.DWG</p> <p>PLOT DATE: 6/30/2025 7:56 AM</p>	<p>MILANO & GRUNLOH ENGINEERS, LLC 114 W. WASHINGTON AVE. PO BOX 887 EFFINGHAM, IL 62401 Phone: (217) 347-7262 (800) 677-2714 Email: mgenr@milengr.com Web: www.milengr.com Design Firm # 184-003108</p>								
<p>SIDEWALK PLANS</p> <p>ITEP 24-0067-00-SW FLORA, ILLINOIS</p>									
<p>SHEET # 9 OF 12</p> <p>M&G JOB # 23281</p>									

ROUTE NO.	SECTION	COUNTY	TOTAL SHEETS	SHEET NO.
S.B.I. F.A.	24-00067 06-SW	CLAY	12	10
FED. ROAD DIST. NO. 7	ILLINOIS	CONTRACT #95988		

REMOVAL PLAN



SIDEWALK PLAN



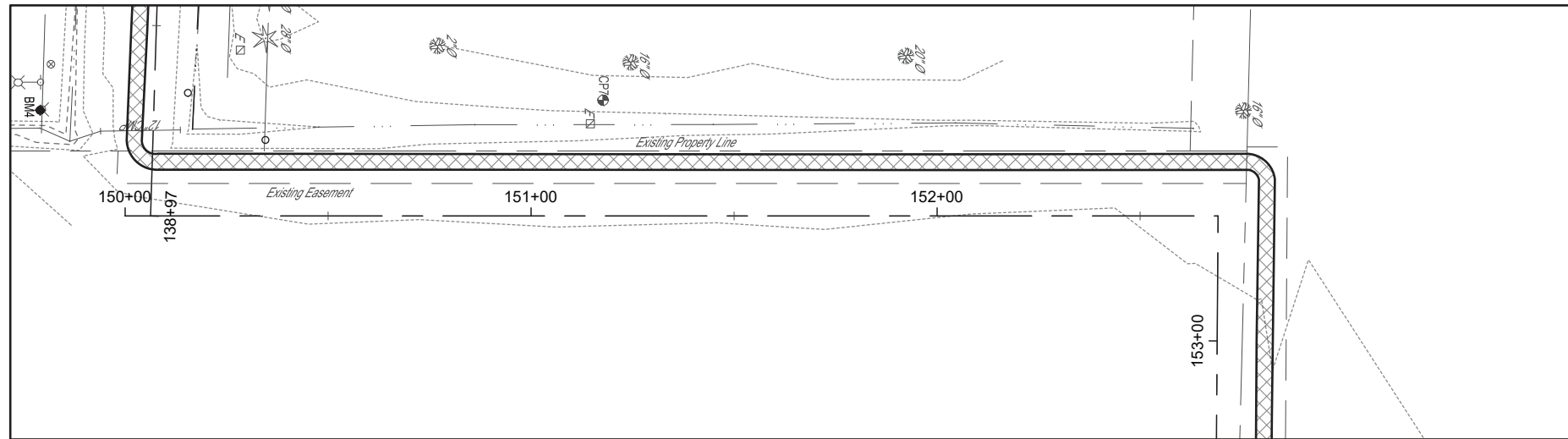
LEGEND

- PC CONC SIDEWALK 4
- PC CONC SIDEWALK 6
- PCC DRIVEWAY PAVT 6
- DETECTABLE WARNING
- EXISTING SW REMOVAL
- DRIVEWAY REMOVAL
- LANDING/TURNING SPACE

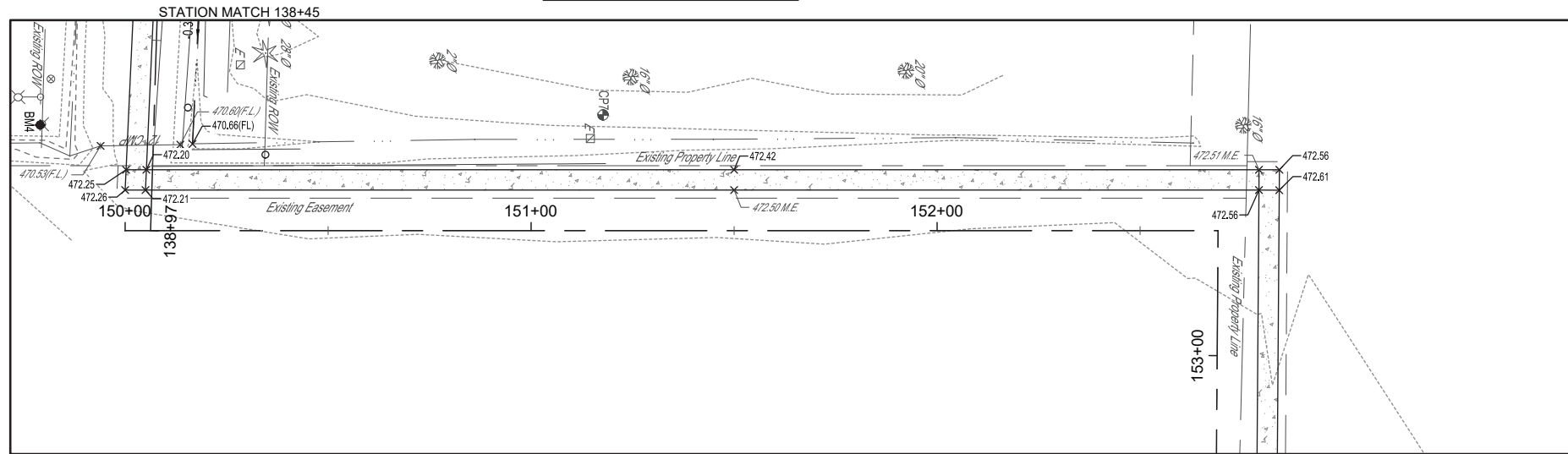
BY	DATE	REVISION ISSUED
FIELD BOOK	855,689,862	
DRAWN BY	JCS	
CHECKED BY	MJH	
FILE LOCATION	S:\2023\2810\NS\SIDEWALK.DWG	
PLOT DATE	6/30/2025 7:56 AM	
MILANO & GRUNLOH ENGINEERS, LLC 114 W. WASHINGTON AVE. PO BOX 897 EFFINGHAM, IL 62401 Phone: (217) 347-2622 (800) 677-2714 Email: mgenr@milanogrunloh.com Web: www.milanogrunloh.com Design Firm # 184-003108		
SIDEWALK PLANS ITEP 24-00067-06-SW FLORA, ILLINOIS		
SHEET # 10 OF 12 M&G JOB # 23281		

ROUTE NO.	SECTION	COUNTY	TOTAL SHEETS	SHEET NO.
S.B.I. F.A.	24-00067 00-SW	CLAY	12	11
FED. ROAD DIST. NO. 7	ILLINOIS	CONTRACT #95988		

REMOVAL PLAN

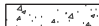


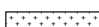


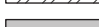


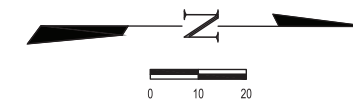
SIDEWALK PLAN



STATION MATCH 153+24

LEGEND

-  PC CONC SIDEWALK 4
-  PC CONC SIDEWALK 6
-  PCC DRIVEWAY PAVT 6
-  DETECTABLE WARNING
-  EXISTING SW REMOVAL
-  DRIVEWAY REMOVAL
-  LANDING/TURNING SPACE



BY	DATE	REVISION/ISSUED

FIELD BOOK	855, 868, 862
DRAWN BY	JCS
CHECKED BY	MJH
FILE LOCATION	S:\2023\281\DWG\SIDEWALK.DWG
PLOT DATE	6/30/2025 7:56 AM

MILANO & GRUNLOH ENGINEERS, LLC
 114 W. WASHINGTON AVE. | PO BOX 897
 EFFINGHAM, IL 62401
 Phone: (217) 347-7262 | (800) 677-2714
 Email: mgenr@engr.com | www.mgenr.com
 Design Firm # 184-003108

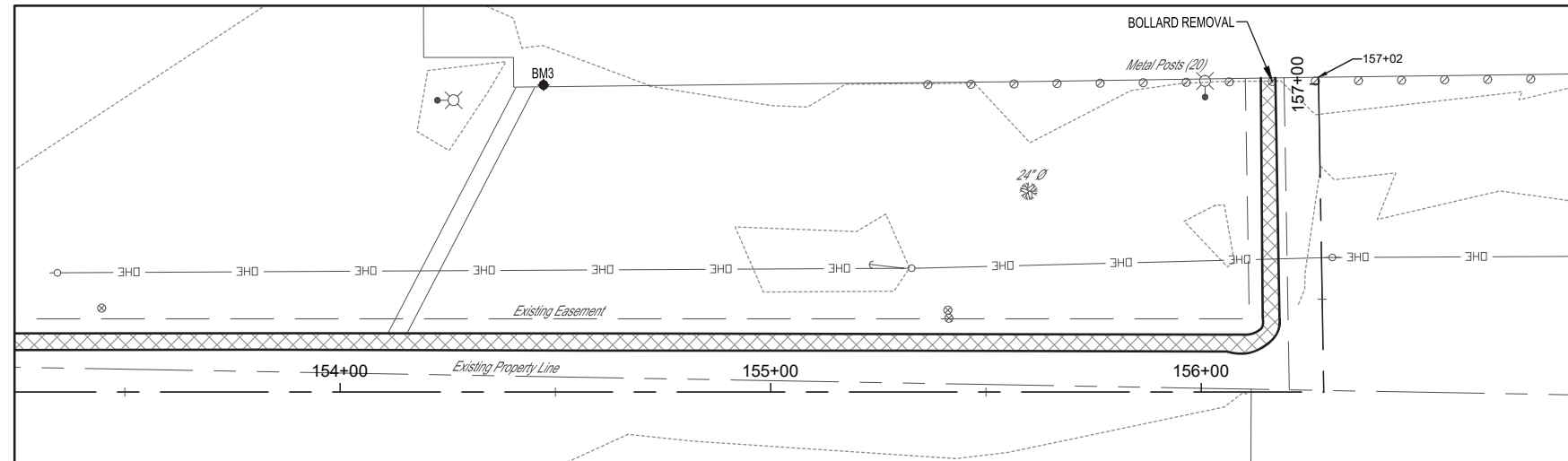


SIDEWALK PLANS
ITEP
24-00067-00-SW
FLORA, ILLINOIS

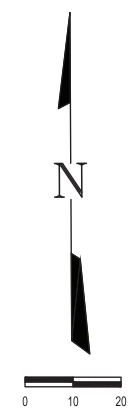
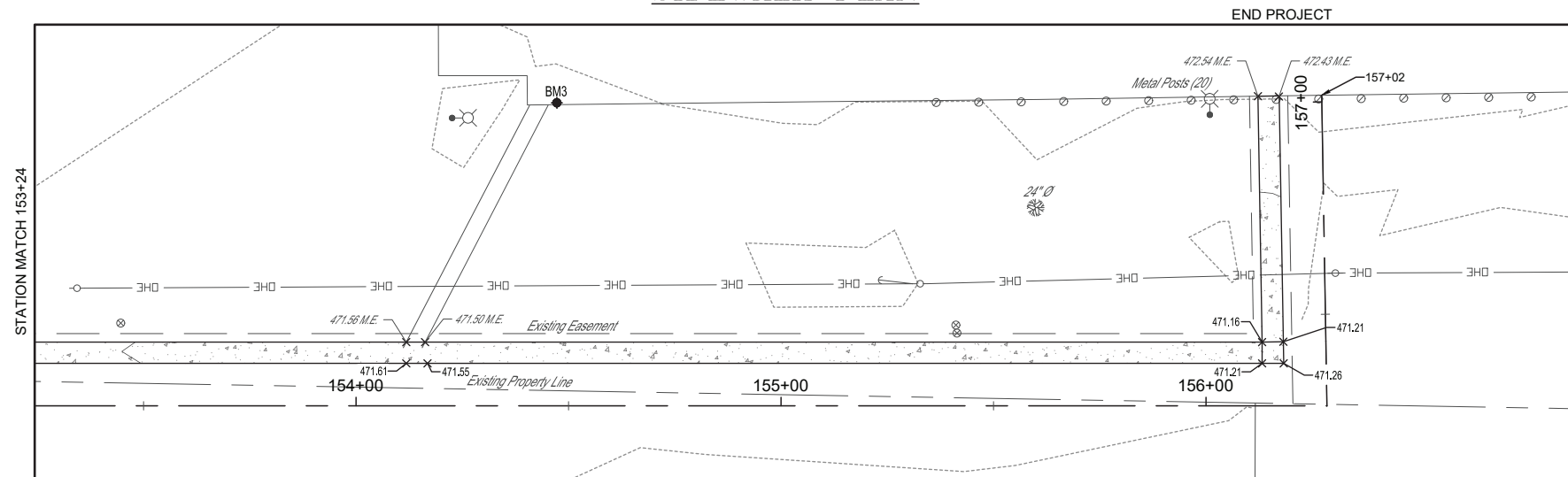
SHEET #	11 OF 12
M&G JOB #	23281

ROUTE NO.	SECTION	COUNTY	TOTAL SHEETS	SHEET NO.
S.B.I. F.A.	24-00067 00-SW	CLAY	12	12
FED. ROAD DIST. NO. 7	ILLINOIS	CONTRACT #95988		

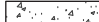






REMOVAL PLAN



SIDEWALK PLAN



LEGEND

-  PC CONC SIDEWALK 4
-  PC CONC SIDEWALK 6
-  PCC DRIVEWAY PAVT 6
-  DETECTABLE WARNING
-  EXISTING SW REMOVAL
-  DRIVEWAY REMOVAL
-  LANDING/TURNING SPACE

REVISION	DATE	BY							
<p>MILANO & GRUNLOH ENGINEERS, LLC 114 W. WASHINGTON AVE. PO BOX 897 EFFINGHAM, IL 62401 Phone: (217) 347-7262 (800) 677-2714 Email: mgeengineers@mgeengineers.com Web: www.mgeengineers.com Design Firm # 184-003108</p>									
FIELD BOOK	855.888.862	DRAWN BY	JCS	CHECKED BY	MJH	FILE LOCATION	S:\2023\281\DWG\SIDEWALK.DWG	PLOT DATE	6/30/2025 7:56 AM
SIDEWALK PLANS									
ITEP									
24-00067-00-SW									
FLORA, ILLINOIS									
SHEET #									
12 OF 12									
M&G JOB #									
23281									