

09-19-2025 LETTING ITEM 080

STATE OF ILLINOIS  
DEPARTMENT OF TRANSPORTATION

**PROPOSED  
HIGHWAY PLANS**

FAP ROUTE 0320  
SECTION 18-00056-00-SW  
PROJECT SPIA (265)  
TYPE of IMPROVEMENT SAFE ROUTE TO SCHOOL  
MOULTRIE COUNTY

C-97-010-25

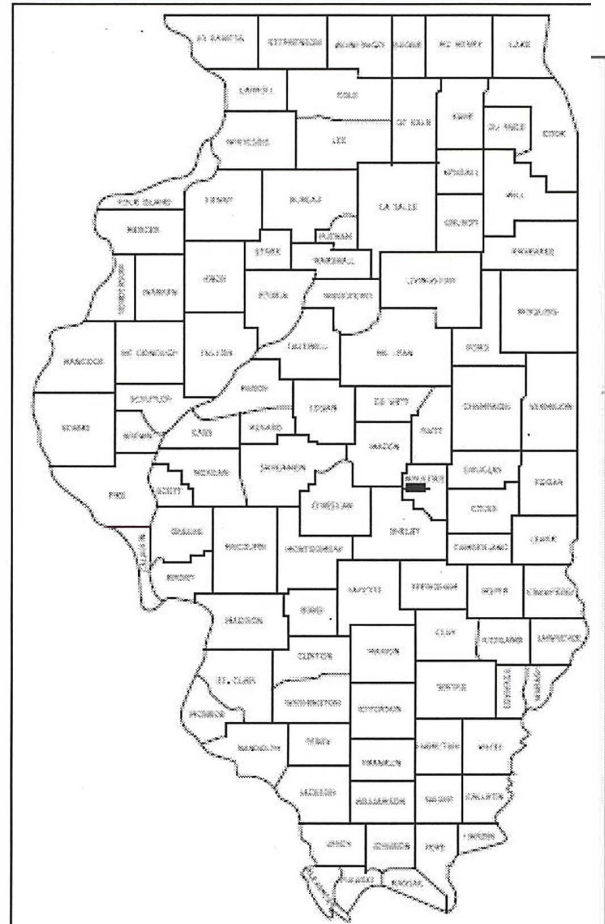
F.A.P. SITE	SECTION	COUNTY	TOTAL SHEETS	SHEET NO.
0320	18-00056-00-SW	MOULTRIE	12	1
		ILLINOIS	CONTRACT NO. 95980	

**INDEX OF SHEETS**

- 1 COVER SHEET
- 2 SUMMARY OF QUANTITIES AND GENERAL NOTES
- 3 SCHEDULES
- 4 TYPICAL SECTIONS
- 5-7 PLAN SHEETS
- 8-11 SIDEWALK DETAILS
- 12 PROJECT DETAILS

**HIGHWAY STANDARDS**

- 000001-08 STANDARD SYMBOLS ABBREVIATIONS AND PATTERNS
- 001001-02 AREAS OF REINFORCEMENT BARS
- 001006 DECIMAL OF AN INCH AND OF A FOOT
- 280001-07 TEMPORARY EROSION CONTROL SYSTEMS
- 606001-08 CONCRETE CURB TYPE B AND COMBINATION CONCRETE CURB AND GUTTER
- 701001-02 OFF-ROAD OPERATIONS 2L 2W MORE THAN 15' (4.5 m) AWAY
- 701006-05 OFF-ROAD OPERATIONS 2L 2W 15' (4.5 m) TO 24" (600 mm) FROM PAVEMENT EDGE
- 701011-04 OFF-ROAD MOVING OPERATIONS 2L 2W DAY ONLY
- 701301-04 LANE CLOSURE 2L 2W SHORT TIME OPERATIONS
- 701801-06 SIDEWALK CORNER OR CROSSWALK CLOSURE
- 701901-10 TRAFFIC CONTROL DEVICES
- 878001-11 CONCRETE FOUNDATION DETAILS



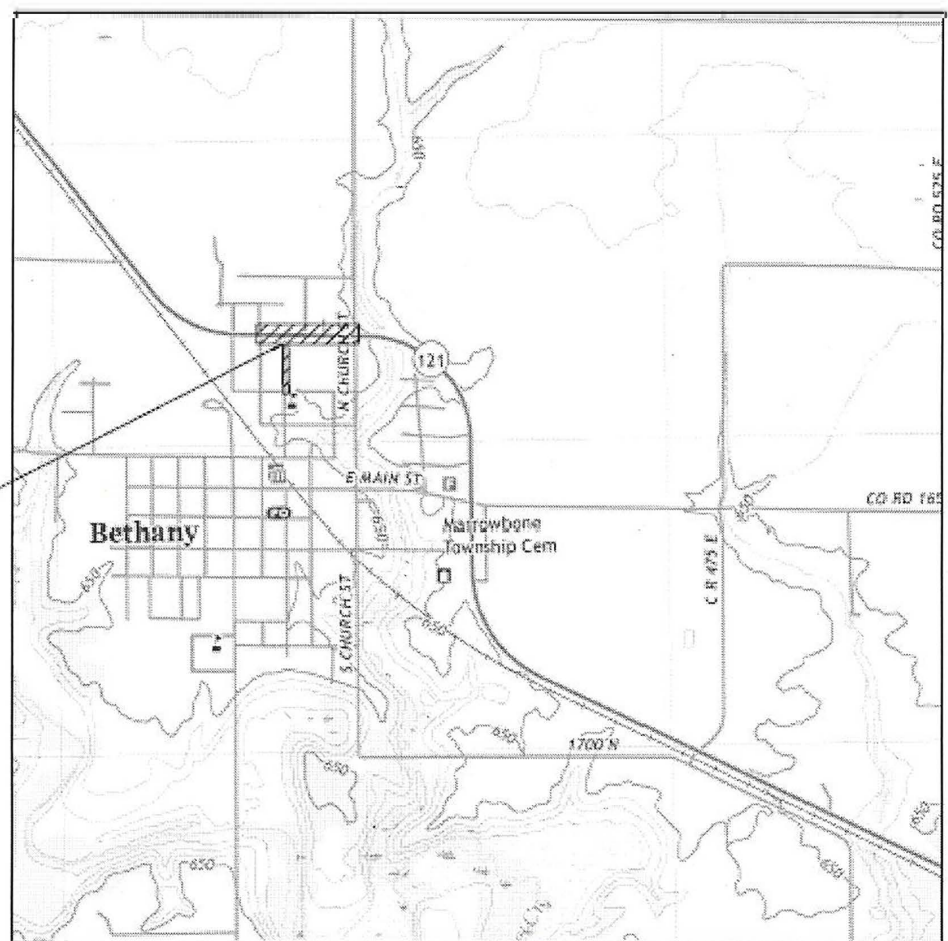
LOCATION OF SECTION INDICATED THUS: - [black rectangle]



FULL SIZE PLANS HAVE BEEN PREPARED USING STANDARD ENGINEERING SCALES. REDUCED SIZED PLANS WILL NOT CONFORM TO STANDARD SCALES. IN MAKING MEASUREMENTS ON REDUCED PLANS, THE ABOVE SCALES MAY BE USED.

J.U.I.L.E.  
JOINT UTILITY LOCATION INFORMATION FOR EXCAVATORS  
1-800-892-0123  
OR 811

PROJECT LOCATION



GROSS LENGTH = 972 FT. = 0.184 MILE  
NET LENGTH = 972 FT. = 0.184 MILE



*Edwin E. Myers*  
DATE: 6/10/2025  
EDWIN E. MYERS  
ILLINOIS PROFESSIONAL ENGINEER NO. 002-040075  
EXP. 11/30/25

**CHASTAIN & ASSOCIATES L.L.C.**  
CONSULTING ENGINEERS  
DISCAL #10 (312) 484-1554  
SCEAL #10870 (772) 214-0050  
ROCKFORD (815) 486-0950  
04-001397

STATE OF ILLINOIS  
DEPARTMENT OF TRANSPORTATION  
DIVISION OF HIGHWAYS

APPROVED: 07/01/25  
*Shannon Risley*  
DISTRICT 7 ENGINEER OF LOCAL ROADS AND STREETS

PASSED: 07/01/25  
*Brittany*  
REGIONAL ENGINEER

RELEASED FOR BID BASED ON LIMITED REVIEW

**PRINTED BY THE AUTHORITY  
OF THE STATE OF ILLINOIS**

PROJECT ENGINEER  
PROJECT MANAGER  
  
CONTRACT NO. 95980

**GENERAL NOTES**

- REFERENCES TO THE "SSRB" SHALL BE INTERPRETED AS REFERENCES TO THE ILLINOIS DEPARTMENT OF TRANSPORTATION'S STANDARD SPECIFICATIONS FOR ROAD AND BRIDGE CONSTRUCTION, ADOPTED JANUARY 1, 2022. COPIES OF THESE SPECIFICATIONS CAN BE PURCHASED FROM THE FOLLOWING ORGANIZATION:  
  
ILLINOIS DEPARTMENT OF TRANSPORTATION  
2300 S. DIRKSEN PARKWAY  
SPRINGFIELD, IL 62764
- ILLINOIS DEPARTMENT OF TRANSPORTATION HIGHWAY STANDARDS, WITH THE REVISION NUMBERS SHOWN IN THE STANDARDS LIST, SHALL APPLY TO THIS CONTRACT.
- THE DESIGN ENGINEER SHALL NOT GUARANTEE THE WORK OF ANY CONTRACTOR OR SUBCONTRACTOR, SHALL HAVE NO AUTHORITY TO STOP WORK, SHALL HAVE NO SUPERVISION OR CONTROL AS TO THE WORK OR PERSONS DOING THE WORK, SHALL NOT BE RESPONSIBLE FOR SAFETY IN, ON, OR ABOUT THE JOB SITE OR HAVE ANY CONTROL OF THE SAFETY OR ADEQUACY OF ANY EQUIPMENT, BUILDING COMPONENT, SCAFFOLDING, SUPPORTS, FORMS OR OTHER WORK AIDS, AND SHALL HAVE NO DUTIES OR RESPONSIBILITIES IMPOSED BY ACTS GOVERNING THE WORKPLACE. IN ADDITION, THE STANDARD SPECIFICATIONS FOR ROAD AND BRIDGE CONSTRUCTION (SSRB) SHALL BE MODIFIED AS FOLLOWS:  
  
UNDER ARTICLE 105.01, ADD THE FOLLOWING SENTENCE: NOTHING CONTAINED HEREIN SHALL RELIEVE THE CONTRACTOR OF HIS DUTY TO OBSERVE AND COMPLY WITH ALL APPLICABLE LAWS, NOR SHALL THE ENGINEER BE RESPONSIBLE FOR THE CONTRACTOR'S COMPLIANCE OR NON-COMPLIANCE WITH SUCH LAWS.  
  
UNDER ARTICLE 107.01, ADD THE FOLLOWING SENTENCE: THE ENGINEER SHALL NOT BE RESPONSIBLE FOR THE CONTRACTOR'S DUTY TO OBSERVE AND COMPLY WITH THE PROVISIONS OF THIS SECTION, OR FOR THE CONTRACTOR'S FAILURE TO DO SO.
- THE CONTRACTOR AGREES THAT HE SHALL ASSUME SOLE AND COMPLETE RESPONSIBILITY FOR JOB SITE CONDITIONS, DURING THE COURSE OF CONSTRUCTION OF THIS PROJECT. THIS INCLUDES SAFETY OF ALL PROPERTY; THAT THIS REQUIREMENT SHALL APPLY CONTINUOUSLY AND NOT BE LIMITED TO NORMAL WORKING HOURS; AND THAT THE CONTRACTOR SHALL DEFEND, INDEMNIFY AND HOLD THE VILLAGE AND THE ENGINEER HARMLESS FROM ANY AND ALL LIABILITY REAL OR ALLEGED, IN CONNECTION WITH THE PERFORMANCE OF WORK ON THIS PROJECT.
- THE CONTRACTOR SHALL BE SOLELY RESPONSIBLE FOR THE MEANS, METHODS, TECHNIQUES, SEQUENCE AND PROCEDURES OF CONSTRUCTION.
- THE TERMS "PLACE", "CONSTRUCT" AND "INSTALL" SHALL BE INTERPRETED TO MEAN "FURNISH ALL EQUIPMENT, MATERIAL AND LABOR TO COMPLETE THE WORK".
- ALL CONTRACTORS WORKING WITHIN THE VILLAGE OF BETHANY MUST BE LICENSED AND BONDED WITH THE VILLAGE OF BETHANY.
- ALL ELEVATIONS ARE BASED ON THE NORTH AMERICAN VERTICAL DATUM OF 1988 (NAVD 88). THE PROPOSED GRADE ELEVATIONS SHOWN ON THE PLAN AND PROFILE SHEETS AND STATION CROSS-SECTIONS ARE THE ELEVATIONS FOR THE FINISHED SURFACE AT LOCATIONS AS INDICATED.
- ALL COORDINATES SHOWN ARE BASED ON THE ILLINOIS COORDINATE SYSTEM, EAST ZONE, NORTH AMERICAN DATUM OF 1983, ADJUSTMENT OF 2011.

- THE CONTRACTOR SHALL PROVIDE ALL LABOR, EQUIPMENT, AND MATERIAL TO SET ALL SURVEY STAKING FOR THIS PROJECT, WHICH IS NEEDED TO ESTABLISH OFFSET STAKES, REFERENCE STAKES, AND ANY OTHER HORIZONTAL OR VERTICAL CONTROL NEEDED TO CONSTRUCT THE PROJECT. THE CONTRACTOR SHALL BE RESPONSIBLE FOR HAVING THE FINISHED WORK CONFORM TO THE LINES, GRADES, ELEVATIONS, AND DIMENSIONS CALLED FOR IN THE PLANS. ANY INSPECTION OR CHECKING OF THE CONTRACTOR'S LAYOUT BY THE ENGINEER AND THE ACCEPTANCE OF ALL, OR ANY PART OF IT, SHALL NOT RELIEVE THE CONTRACTOR OF HIS RESPONSIBILITY TO SECURE THE PROPER DIMENSIONS, GRADES, AND ELEVATIONS OF THE SEVERAL PARTS OF THE WORK. THE CONTRACTOR SHALL EXERCISE CARE IN THE PRESERVATION OF HORIZONTAL AND VERTICAL CONTROL POINTS AND SHALL HAVE THEM RESET AT HIS EXPENSE IF ANY ARE DISTURBED.
- THE PLAN DIMENSIONS WERE DETERMINED FROM EXISTING PLANS AND FIELD SURVEYS. THE CONTRACTOR IS RESPONSIBLE FOR FIELD VERIFYING ALL DIMENSIONS AND EXISTING SITE CONDITIONS PRIOR TO BIDDING. DO NOT SCALE PLANS FOR DIMENSIONS NOT GIVEN.
- RADII DIMENSIONS SHOWN ON PLAN SHEETS ARE TO EDGE OF PAVEMENT OR SIDEWALK.
- ALL PAVEMENT ELEVATIONS SHOWN ARE AT EDGE OF PAVEMENT, OR SIDEWALK, UNLESS OTHERWISE INDICATED.
- THE COST OF REMOVING ANY MISCELLANEOUS ITEMS LOCATED WITHIN THE LIMITS OF THE PROJECT AND WHICH HAVE NOT BEEN ACCOUNTED FOR AS A PAY ITEM SHALL BE CONSIDERED INCLUDED IN THE COST OF THE CONTRACT.
- ALL DISTURBED AREAS SHALL BE SMOOTHED, SEEDED, AND FERTILIZED PER THE SSRB IN ACCORDANCE WITH ARTICLE 250 AND MULCHED IN ACCORDANCE WITH ARTICLE 251 AND THE SPECIAL PROVISIONS. CONTRACTOR SHALL REMOVE ALL CONSTRUCTION RESIDUE UPON COMPLETION OF THE WORK.
- THE CONTRACTOR SHALL PROVIDE AND MAINTAIN TEMPORARY ACCESS TO ALL PRIVATE AND COMMERCIAL PROPERTIES. ACCESS TO COMMERCIAL PROPERTIES SHALL REMAIN OPEN CONTINUOUSLY. ACCESS TO PRIVATE PROPERTIES SHALL NOT BE CLOSED FOR MORE THAN 8 HOURS. THE CONTRACTOR SHALL NOTIFY PRIVATE RESIDENTS A MINIMUM OF 24 HOURS IN ADVANCE OF ACCESS CLOSURE. MAINTAINING THE TEMPORARY ACCESS SHALL INCLUDE RELOCATING AND/OR REGRADING THE AGGREGATE SURFACE FOR ANY OPERATION THAT MAY DISTURB OR REMOVE THE TEMPORARY ACCESS. THE SAME TYPE AND GRADATION OF MATERIAL USED TO CONSTRUCT THE TEMPORARY ACCESS SHALL BE USED TO MAINTAIN IT. THIS WORK SHALL BE PAID FOR AT THE CONTRACT UNIT PRICE PER TON FOR AGGREGATE FOR TEMPORARY ACCESS. QUANTITY SHOWN IS ESTIMATED.
- THE CONTRACTOR WILL NOT BE ALLOWED TO SET UP A YARD OR FIELD OFFICE ON STATE, COUNTY, VILLAGE, OR PRIVATE PROPERTY WITHOUT WRITTEN PERMISSION.

**UTILITY GENERAL NOTES**

- THE CONTRACTOR SHALL COORDINATE CONSTRUCTION ACTIVITIES WITH AFFECTED UTILITY COMPANIES.
- THE LOCATIONS OF THE EXISTING UNDERGROUND UTILITIES WERE OBTAINED FROM RECORDS AND FIELD SURVEYS. IT SHALL BE THE CONTRACTOR'S RESPONSIBILITY TO VERIFY ALL UNDERGROUND UTILITY LOCATIONS PRIOR TO EXCAVATION FOR THE PROJECT.
- BEFORE STARTING ANY EXCAVATION, THE CONTRACTOR SHALL CALL "J.U.L.I.E." AT 811 OR 1-800-892-0123 FOR FIELD LOCATIONS FOR BURIED ELECTRIC, TELEPHONE AND GAS FACILITIES (48 HOURS NOTIFICATION IS REQUIRED).

Code Number	Item	Unit OF Measure	Quantity
28000250	TEMPORARY EROSION CONTROL SEEDING	POUND	50
28000500	INLET & PIPE PROTECT	EACH	8
28000510	INLET FILTERS	EACH	15
40200500	AGGREGATE SURFACE COURSE, TYPE A 6"	SQ YD	61
40201000	AGGREGATE FOR TEMPORARY ACCESS	TON	100
42300200	PORTLAND CEMENT CONCRETE DRIVEWAY PAVEMENT, 6 INCH	SQ YD	278
42400200	PORTLAND CEMENT CONCRETE SIDEWALK 5 INCH	SQ FT	8575
42400300	PORTLAND CEMENT CONCRETE SIDEWALK 6 INCH	SQ FT	1705
42400800	DETECTABLE WARNINGS	SQ FT	152
44000200	DRIVEWAY PAVEMENT REMOVAL	SQ YD	376
44000500	COMBINATION CURB AND GUTTER REMOVAL	FOOT	183
44000600	SIDEWALK REMOVAL	SQ FT	3034
60300305	FRAMES AND LIDS TO BE ADJUSTED	EACH	3
60604400	COMBINATION CONCRETE CURB AND GUTTER, TYPE B-6.18	FOOT	183
* 66900200	NON-SPECIAL WASTE DISPOSAL	CU YD	20
* 66900530	SOIL DISPOSAL ANALYSIS	EACH	1
* 66901001	REGULATED SUBSTANCES PRE-CONSTRUCTION PLAN	L SUM	1
* 66901003	REGULATED SUBSTANCES FINAL CONSTRUCTION REPORT	L SUM	1
* 66901006	REGULATED SUBSTANCES MONITORING	CAL DAY	2
67100100	MOBILIZATION	L SUM	1
* 72000100	SIGN PANEL - TYPE 1	SQ FT	46.26
* 78001130	PAINT PAVEMENT MARKING - LINE 6"	FOOT	605
* 81028340	UNDERGROUND CONDUIT, PVC, 1 1/2" DIA.	FOOT	21
* 87301235	ELECTRIC CABLE IN CONDUIT, SIGNAL NO. 14 4C	FOOT	51
* 87301900	ELECTRIC CABLE IN CONDUIT, EQUIPMENT GROUNDING CONDUCTOR, NO. 6 1C	FOOT	51
* 87502680	TRAFFIC SIGNAL POST, ALUMINUM 14 FT	EACH	2
* 87601200	PEDESTRIAN PUSH-BUTTON POST, GALVANIZED STEEL, TYPE II	EACH	2
* 87800100	CONCRETE FOUNDATION, TYPE A	FOOT	12
* 88800100	PEDESTRIAN PUSH-BUTTON	EACH	2
X2500920	SEEDING, CLASS 1A (SPECIAL)	ACRE	0.5
X0326806	WASHOUT BASIN	L SUM	1
* X0326899	SOLAR-POWERED FLASHING BEACON ASSEMBLY (COMPLETE)	EACH	1
X7010216	TRAFFIC CONTROL & PROTECTION, (SPECIAL)	L SUM	1

\* SPECIALTY ITEM

**APPLICATION RATES**

FERTILIZER NUTRIENTS 1:1:1 - 90 LBS/ACRE  
 AGGRICULTURAL GROUND LIMESTONE - 2 TONS/ACRE  
 TEMPORARY EROSION CONTROL SEEDING - 100 LBS/ACRE  
 AGGREGATE - 2.05 TONS/CU YD

FILE NAME : I:\Municipalities\Village of Bethany\7059\_ILL\_121\_Sidewalk\ACADD\Civil\7059\_Shr02\_500\_GN.dgn

USER NAME : rkocher	DESIGNED -	REVISED -
	DRAWN -	REVISED -
PLOT SCALE = 48.0000' / 1in.	CHECKED -	REVISED -
PLOT DATE = 6/30/2025	DATE -	REVISED -

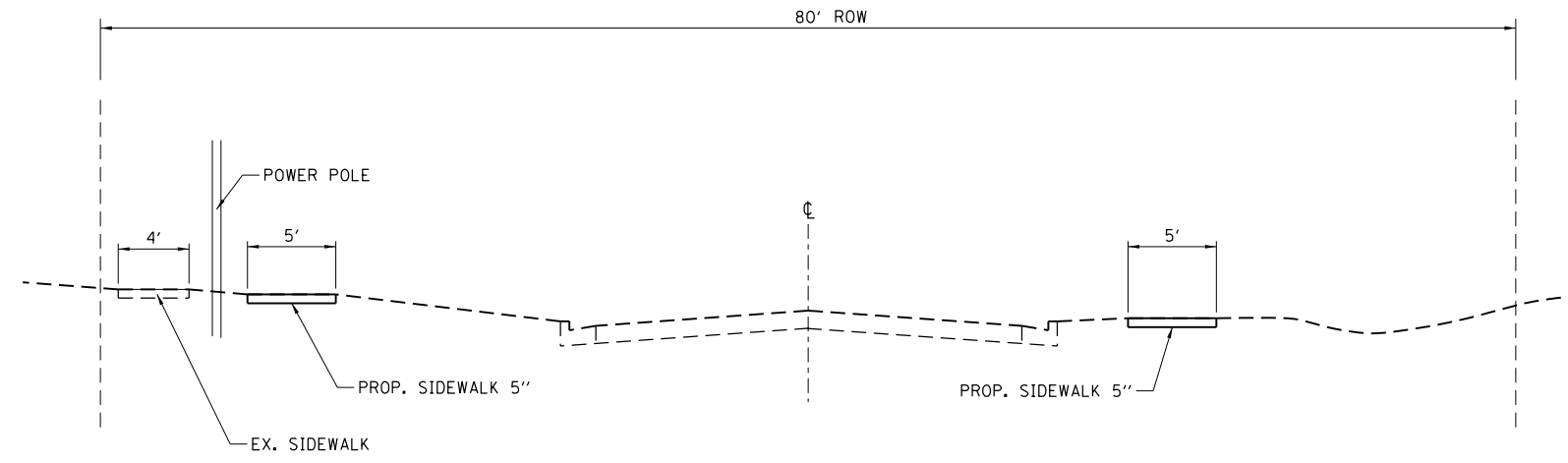


DECATUR (217) 422-8544  
 SCHAUMBURG (773) 714-0050  
 ROCKFORD (815) 489-0050  
 184-001397

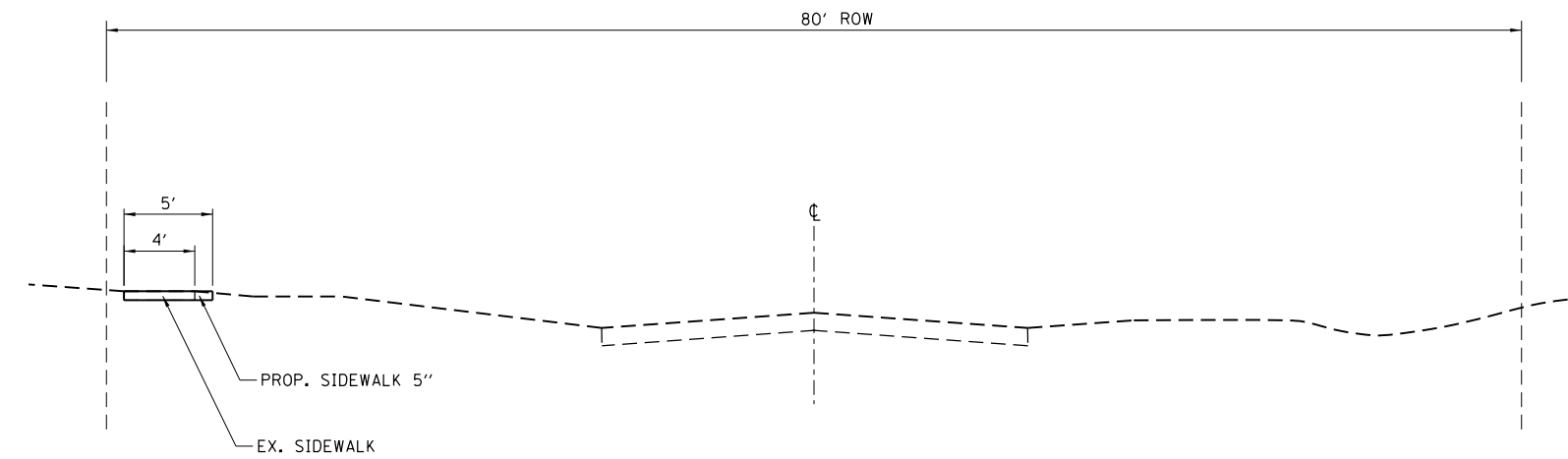
SUMMARY OF QUANTITIES AND GENERAL NOTES			
VILLAGE OF BETHANY - ILLINOIS ROUTE 121 SIDEWALK			
SCALE:	SHEET NO. OF SHEETS	STA.	TO STA.

F.A.P. RTE.	SECTION	COUNTY	TOTAL SHEETS	SHEET NO.
0320	18-00056-00-SW	MOULTRIE	12	2
CONTRACT NO. 95980				
[ILLINOIS] FED. AID PROJECT				





**TYPICAL SECTION  
ILL. ROUTE 121**



**PROPOSED TYPICAL SECTION  
WASHINGTON STREET**

FILE NAME = I:\Municipalities\Village of Bethany\7050 ILL 121 Sidewalks\CADD\Civil\7050\_Sht04\_typical.dgn

USER NAME = rkocher	DESIGNED -	REVISED -
	DRAWN -	REVISED -
PLOT SCALE = 20.0000 / in.	CHECKED -	REVISED -
PLOT DATE = 6/30/2025	DATE -	REVISED -

**CHASTAIN  
& ASSOCIATES LLC**  
CONSULTING ENGINEERS

DECATUR (217) 422-8544  
SCHAUMBURG (773) 714-0050  
ROCKFORD (815) 489-0050  
184-001397

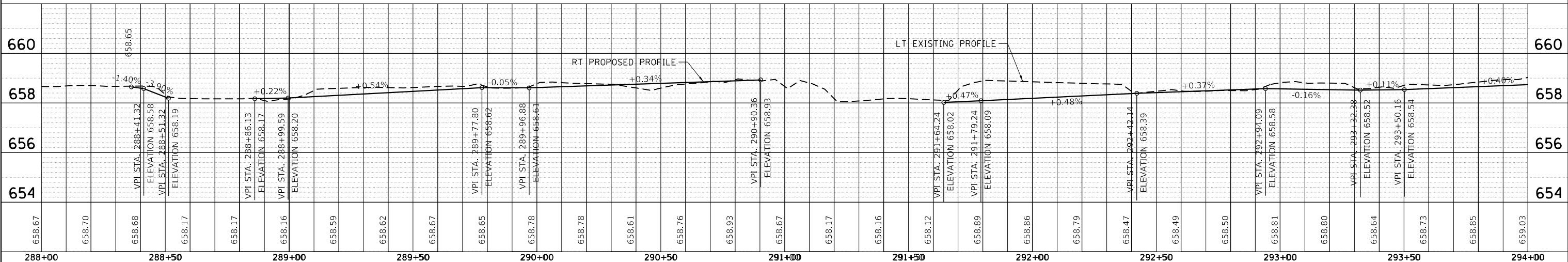
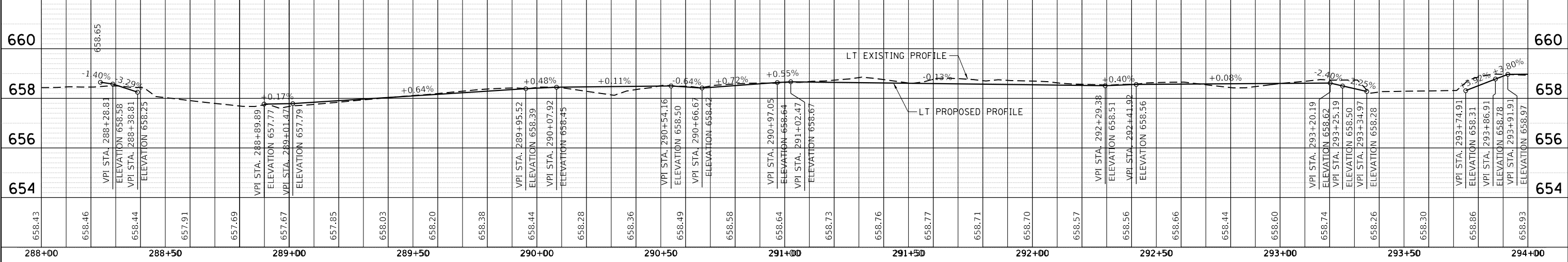
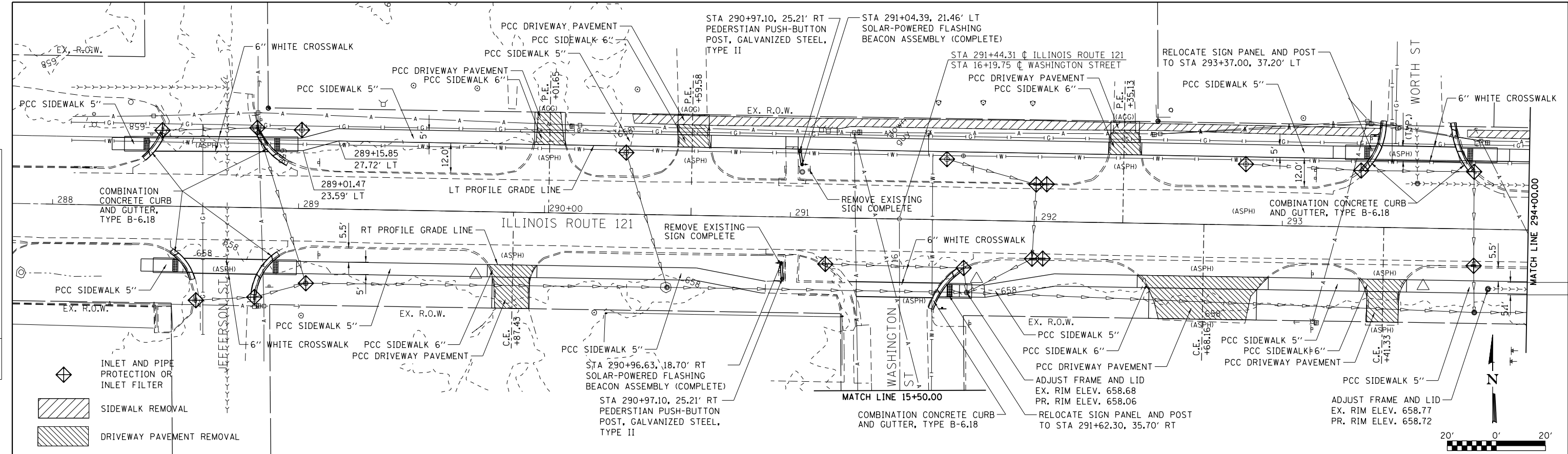
**TYPICAL SECTIONS  
VILLAGE OF BETHANY - ILLINOIS ROUTE 121 SIDEWALK**

SCALE: SHEET NO. OF SHEETS STA. TO STA.

F.A.P. RTE.	SECTION	COUNTY	TOTAL SHEETS	SHEET NO.
0320	18-00056-00-SW	MOULTRIE	12	4
CONTRACT NO. 95980				
ILLINOIS FED. AID PROJECT				

PLAN	SURVEYED	BY	DATE
	PLOTTED		
	NOTED		
	CHECKED		
	FILED		
	NO. _____		
	NO. _____		
	NO. _____		
	NO. _____		

PROFILE	SURVEYED	BY	DATE
	PLOTTED		
	NOTED		
	CHECKED		
	FILED		
	NO. _____		
	NO. _____		
	NO. _____		
	NO. _____		

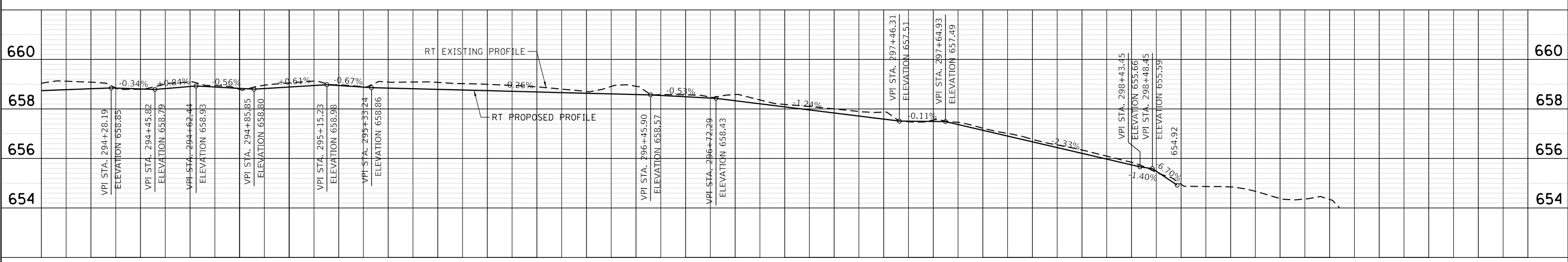
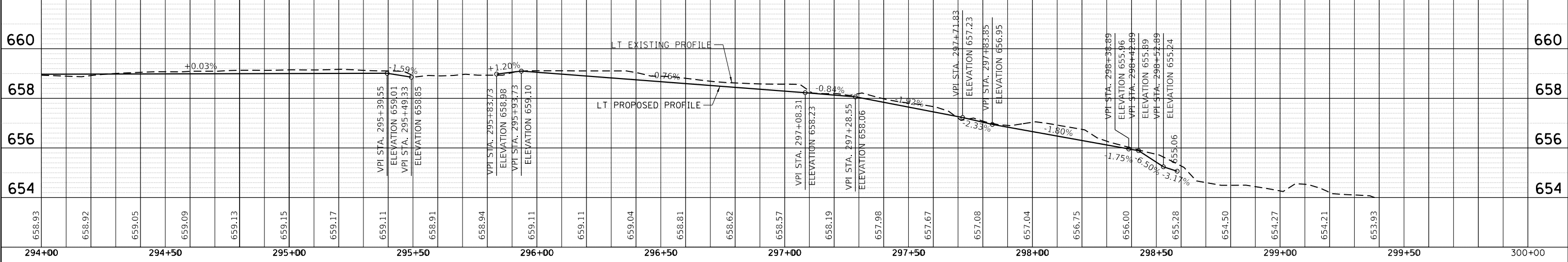
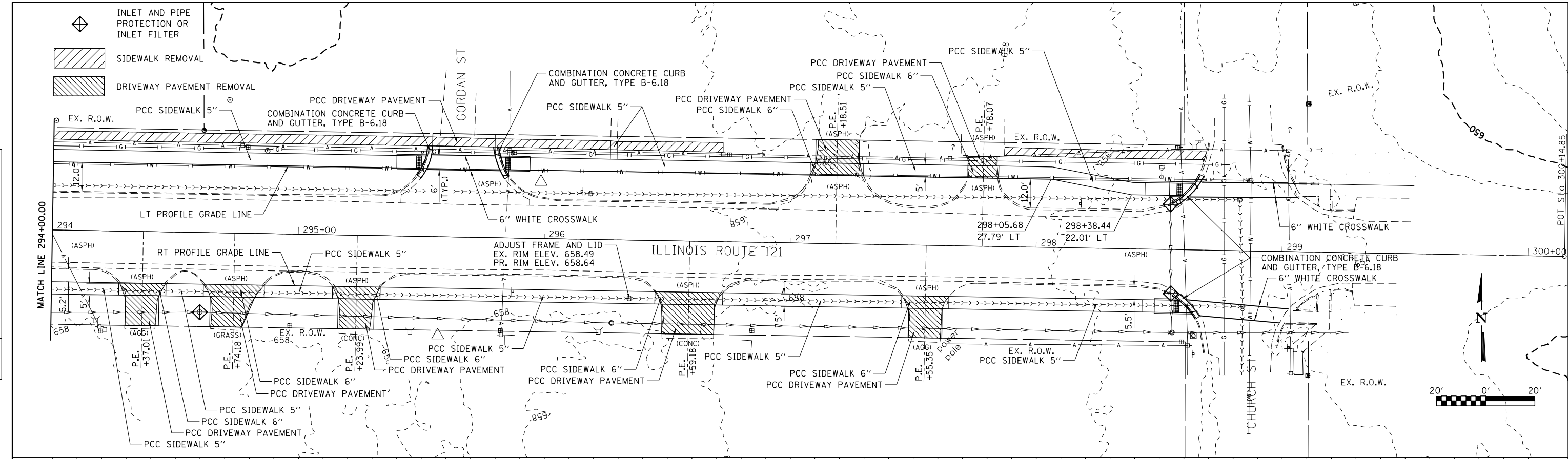


USER NAME = rkocher	DESIGNED - MBF	REVISIED -	<b>CHASTAIN &amp; ASSOCIATES LLC</b> CONSULTING ENGINEERS DECATUR (217) 422-8544 SCHAUMBURG (773) 714-0050 ROCKFORD (815) 489-0050 184-001397	<b>PLAN AND PROFILE</b> <b>VILLAGE OF BETHANY - ILLINOIS ROUTE 121 SIDEWALK</b> SCALE: SHEET 1 OF 3 SHEETS STA. 288+00 TO STA. 294+00	F.A.P.	SECTION	COUNTY	TOTAL SHEETS	SHEET NO.
PLOT SCALE = 40.0000 / in.	CHECKED -	REVISIED -			18-00056-00-SW	MOULTRIE	12	5	
PLOT DATE = 6/30/2025	DRAWN - RLK	REVISIED -			ILLINOIS	CONTRACT NO. 95980			

I:\Municipalities\Village of Bethany\7058 ILL 121 Sidewalk\CAD\Civil\7058\_Side.p101.dgn

PLAN	SURVEYED	DATE
	PLOTTED	
	GRADES CHECKED	
	STRUCTURE NOTATIONS CHECKED	
	NOTE BOOK NO.	
	FILE NAME	

PROFILE	SURVEYED	DATE
	PLOTTED	
	GRADES CHECKED	
	STRUCTURE NOTATIONS CHECKED	
	NOTE BOOK NO.	
	FILE NAME	



I:\Municipalities\Village of Bethany\7958 IL 121 Sidewalk\CAD\Civil\7958\_Sidewalk\p1r02\_IL\_121.dgn

USER NAME = rkoacher	DESIGNED - MBF	REVISED -
	CHECKED -	REVISED -
PLOT SCALE = 48.0000 / in.	DRAWN - RLK	REVISED -
PLOT DATE = 6/30/2025	CHECKED -	REVISED -

**CHASTAIN & ASSOCIATES LLC**  
CONSULTING ENGINEERS

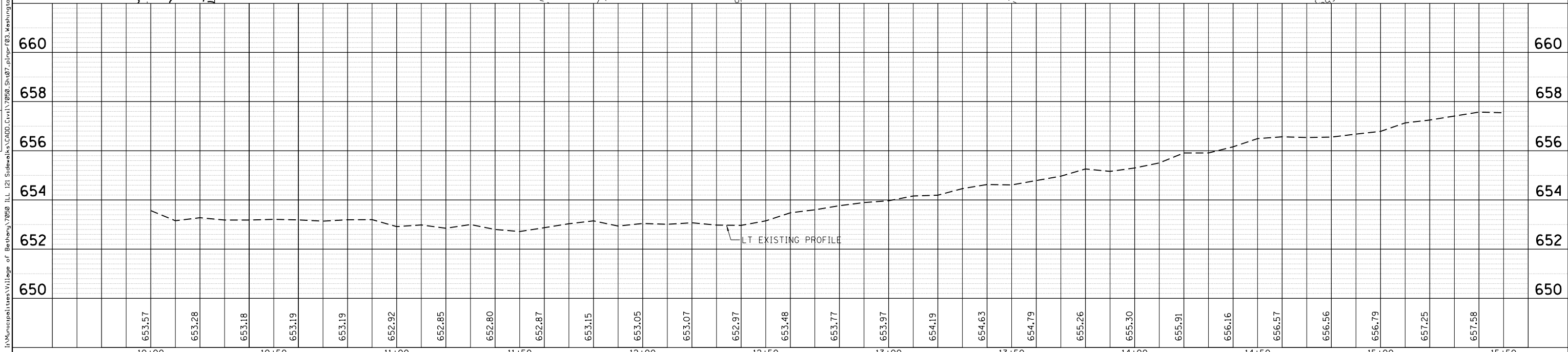
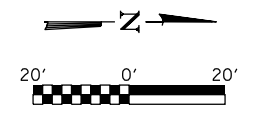
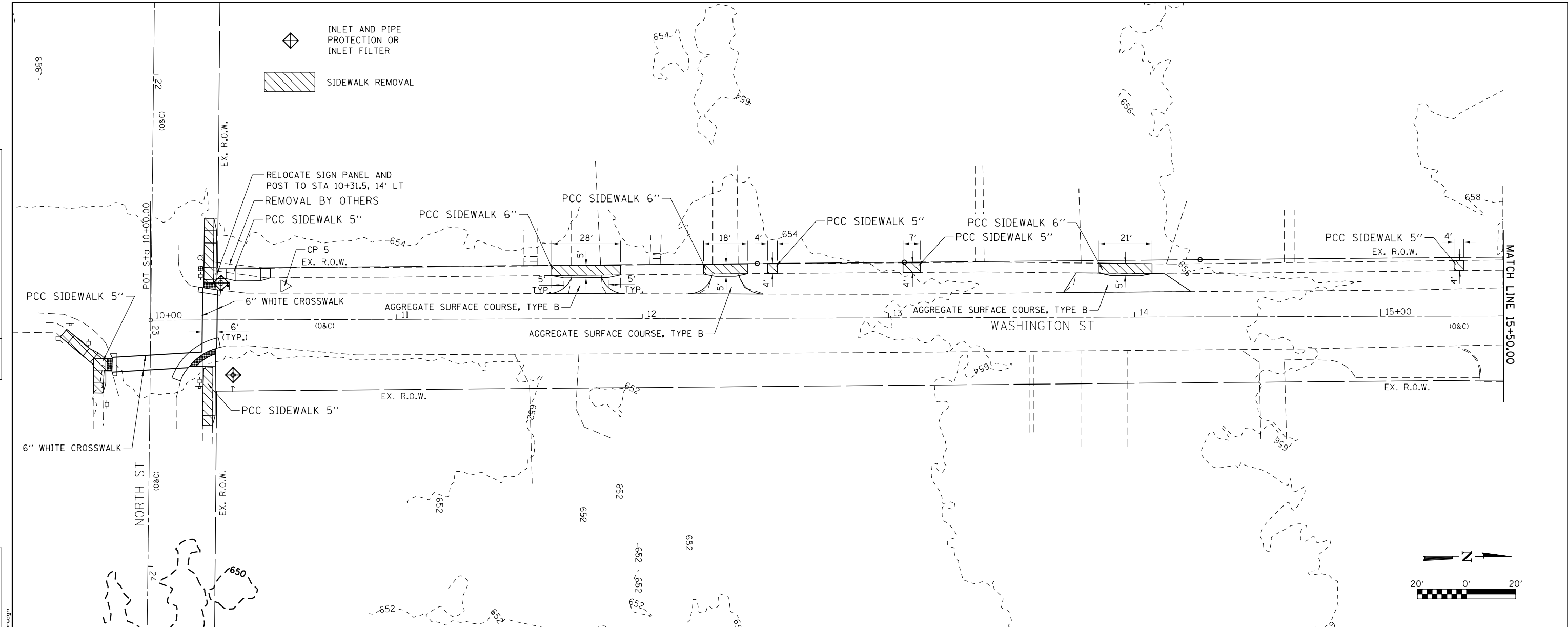
DECATUR (217) 422-8544  
SCHAUMBURG (773) 714-0050  
ROCKFORD (815) 489-0050  
184-001397

**VILLAGE OF BETHANY - ILLINOIS ROUTE 121 SIDEWALK**  
SCALE: SHEET 2 OF 3 SHEETS STA. 294+00 TO STA. 299+00

F.A.P.	SECTION	COUNTY	TOTAL SHEETS	SHEET NO.
	18-00056-00-SW	MOULTRIE	12	6
		ILLINOIS		CONTRACT NO. 95980

PLAN	SURVEYED	DATE
	PLOTTED	
	NOTED	
	CHECKED	
	ALIGNED	
	FILED	
	NO.	

PROFILE	SURVEYED	DATE
	PLOTTED	
	GRADES	
	CHECKED	
	STRUCTURE	
	NOTATIONS	
	CHKD	
	NO.	



10+00	10+50	11+00	11+50	12+00	12+50	13+00	13+50	14+00	14+50	15+00	15+50																
653.57	653.28	653.18	653.19	653.19	652.92	652.85	652.80	652.87	653.15	653.05	653.07	652.97	653.48	653.77	653.97	654.19	654.63	654.79	655.26	655.30	655.91	656.16	656.57	656.56	656.79	657.25	657.58

USER NAME = rkocher	DESIGNED -	REVISED -
PLOT SCALE = 40.0000 / in.	DRAWN -	REVISED -
PLOT DATE = 6/30/2025	CHECKED -	REVISED -
	DATE -	REVISED -

**CHASTAIN & ASSOCIATES LLC**  
CONSULTING ENGINEERS

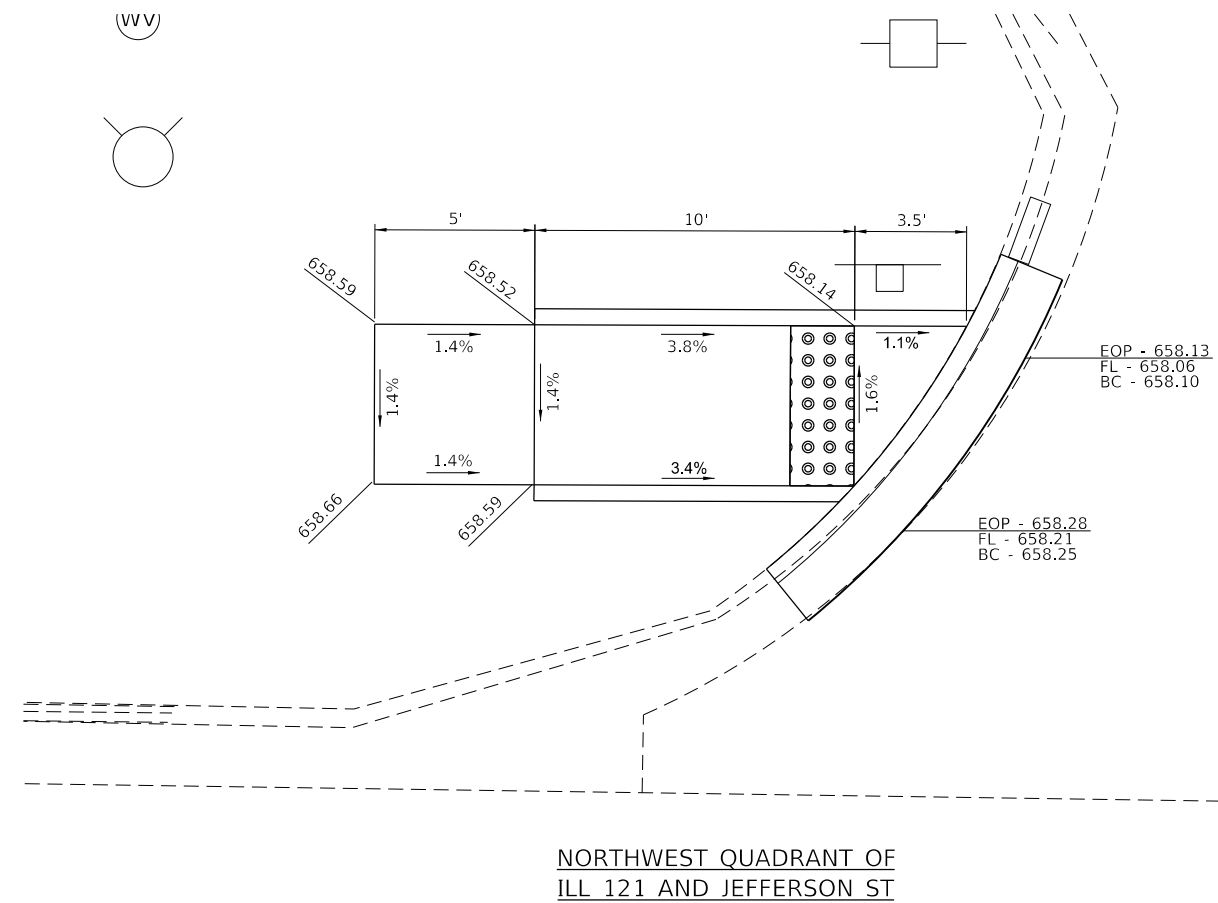
DECATUR (217) 422-8544  
SCHAUMBURG (773) 714-0050  
ROCKFORD (815) 489-0050  
184-001397

<b>VILLAGE OF BETHANY - ILLINOIS ROUTE 121 SIDEWALK</b>			
SCALE:	SHEET NO. OF 3 SHEETS	STA. TO STA.	

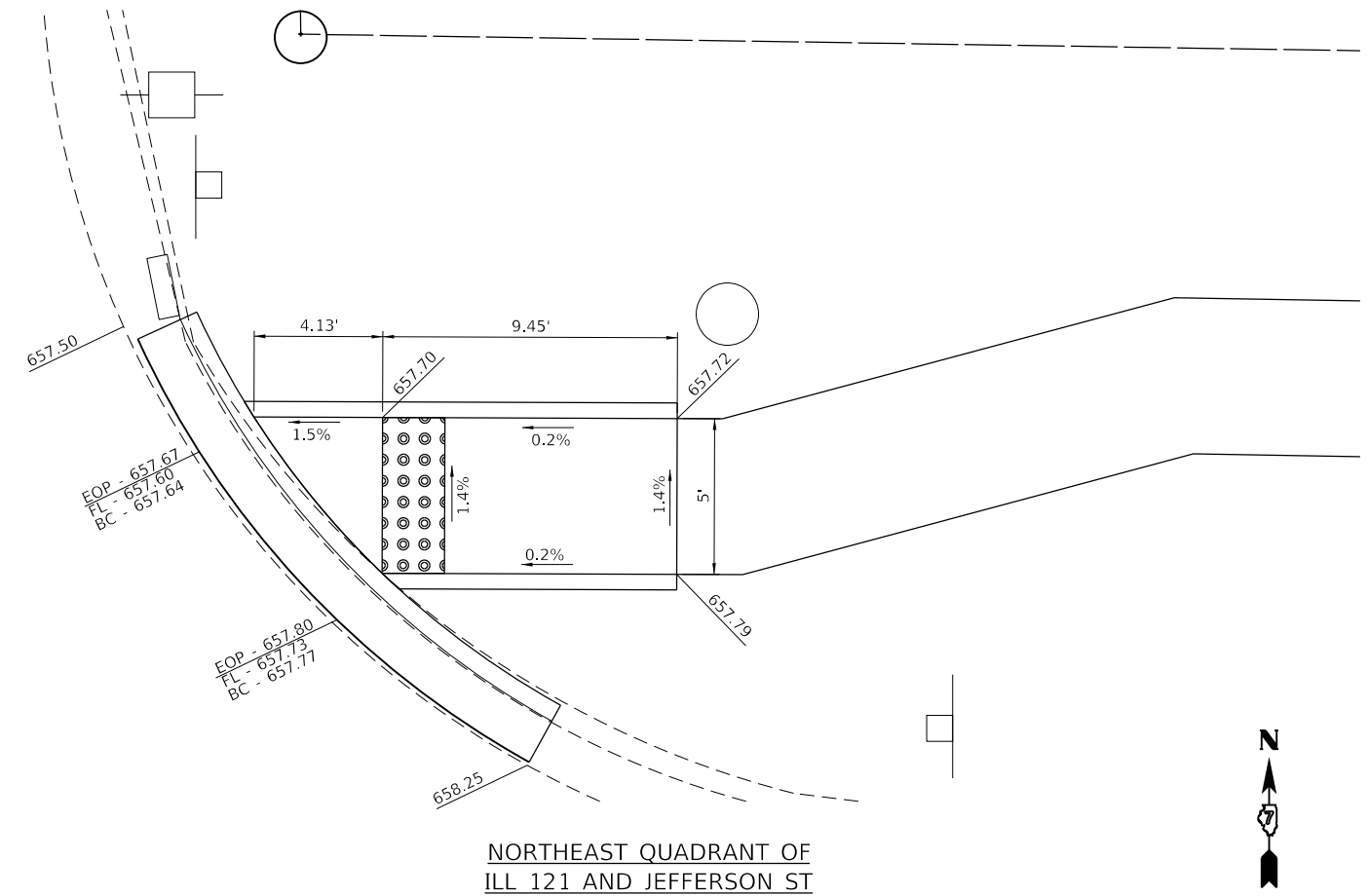
F.A.P. RTE. 0320	SECTION 18-00056-00-SW	COUNTY MOULTRIE	TOTAL SHEETS 12	SHEET NO. 7
CONTRACT NO. 95980				
ILLINOIS FED. AID PROJECT				

I:\Municipal\Illinois\121 Sidewalk\18400-Civil\70980-Side\07-plr\18400-121 Sidewalk.dgn

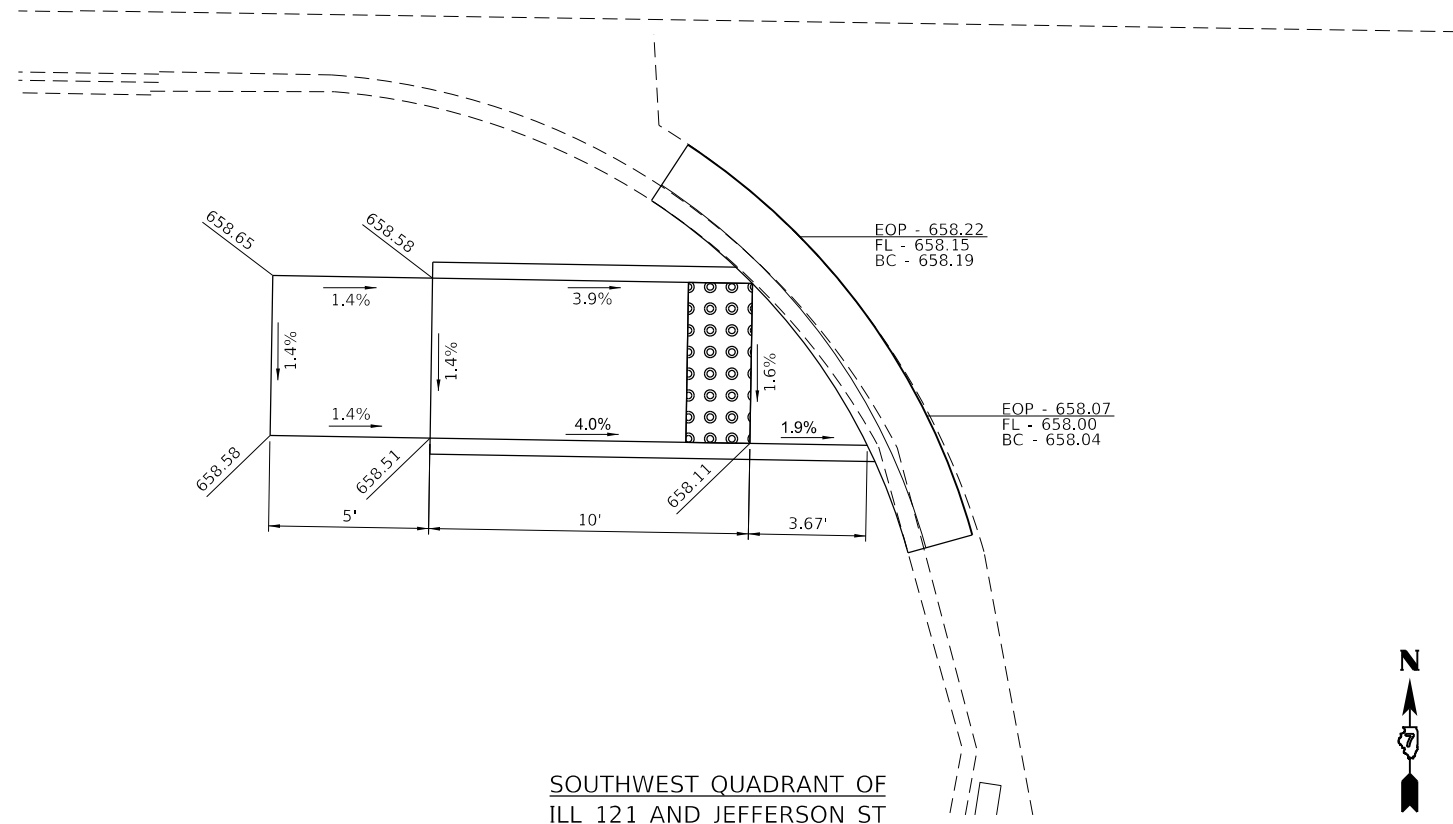
WV



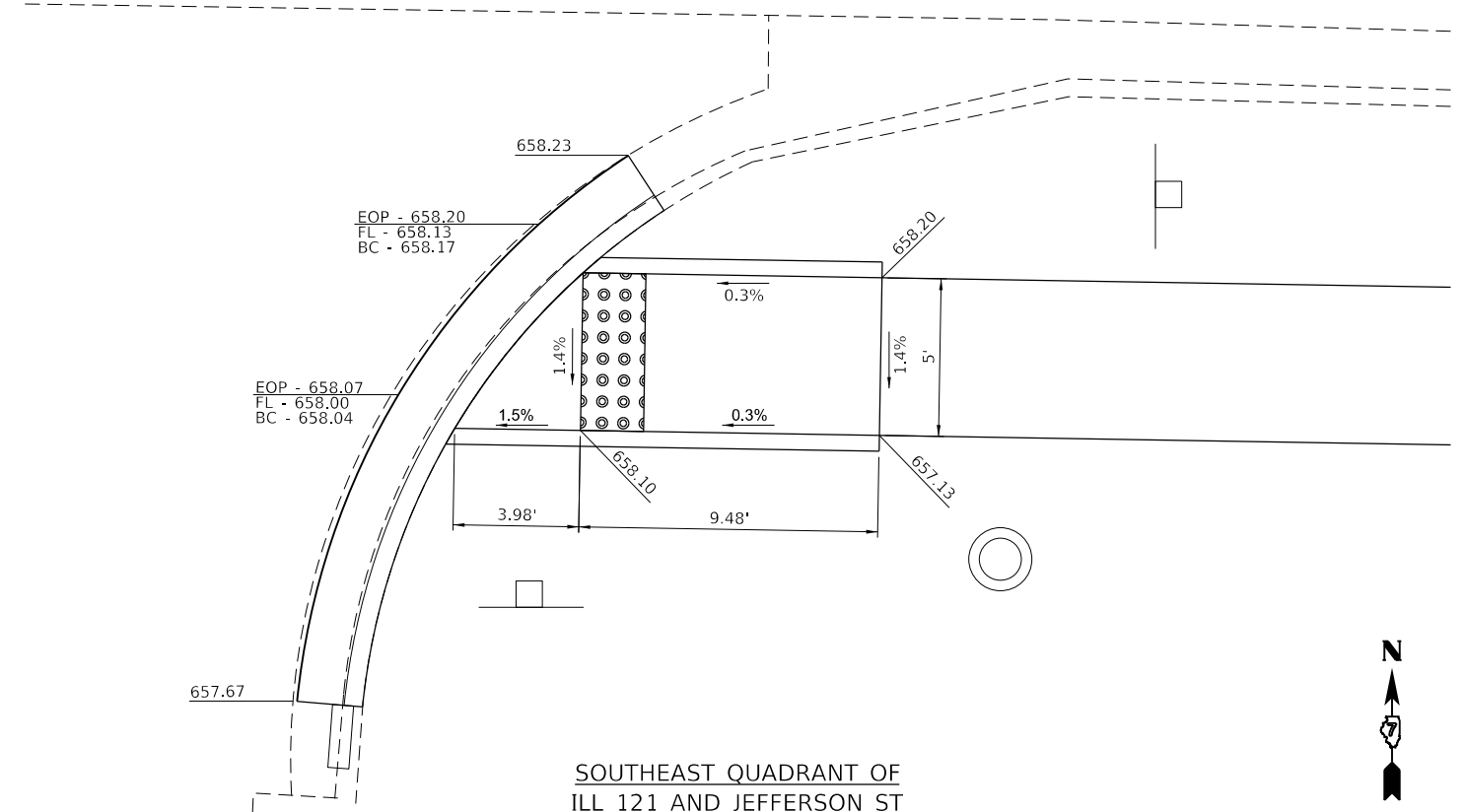
NORTHWEST QUADRANT OF ILL 121 AND JEFFERSON ST



NORTHEAST QUADRANT OF ILL 121 AND JEFFERSON ST



SOUTHWEST QUADRANT OF ILL 121 AND JEFFERSON ST



SOUTHEAST QUADRANT OF ILL 121 AND JEFFERSON ST



FILE NAME = I:\Municipalities\Village of Bethany\7050 ILL 121 Sidewalk\CADD\Civil\7050\_Sht08\_Sidewalk\_Details.dwg

USER NAME = rkocher	DESIGNED -	REVISED -
PLOT SCALE = 6.0000' / 1"	DRAWN -	REVISED -
PLOT DATE = 6/30/2025	CHECKED -	REVISED -
	DATE -	REVISED -

**CHASTAIN & ASSOCIATES LLC**  
CONSULTING ENGINEERS

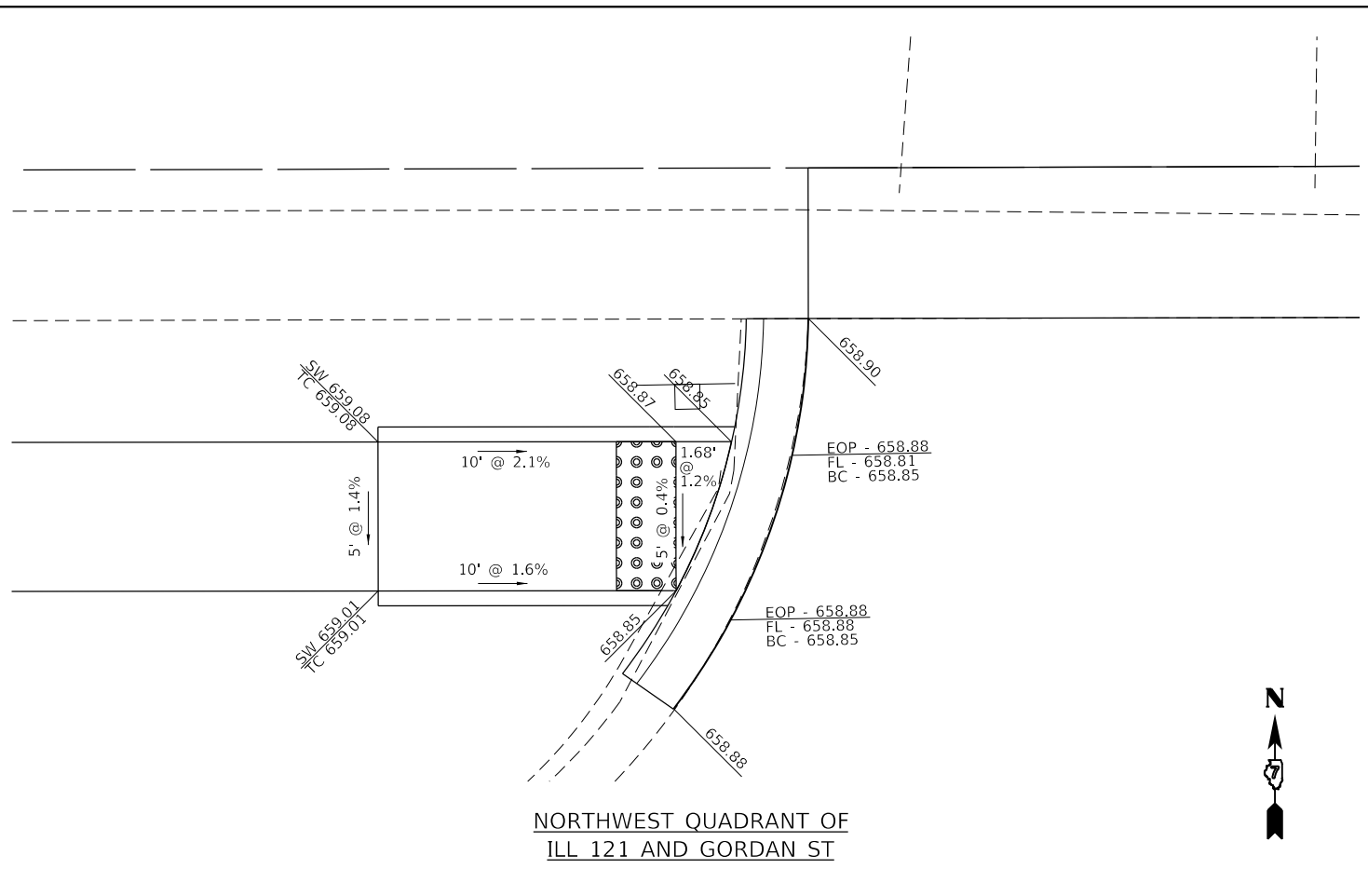
DECATUR (217) 422-8544  
SCHAUMBURG (773) 714-0050  
ROCKFORD (815) 489-0050  
184-001397

**SIDEWALK RAMP DETAILS**  
**VILLAGE OF BETHANY - ILLINOIS ROUTE 121 SIDEWALK**

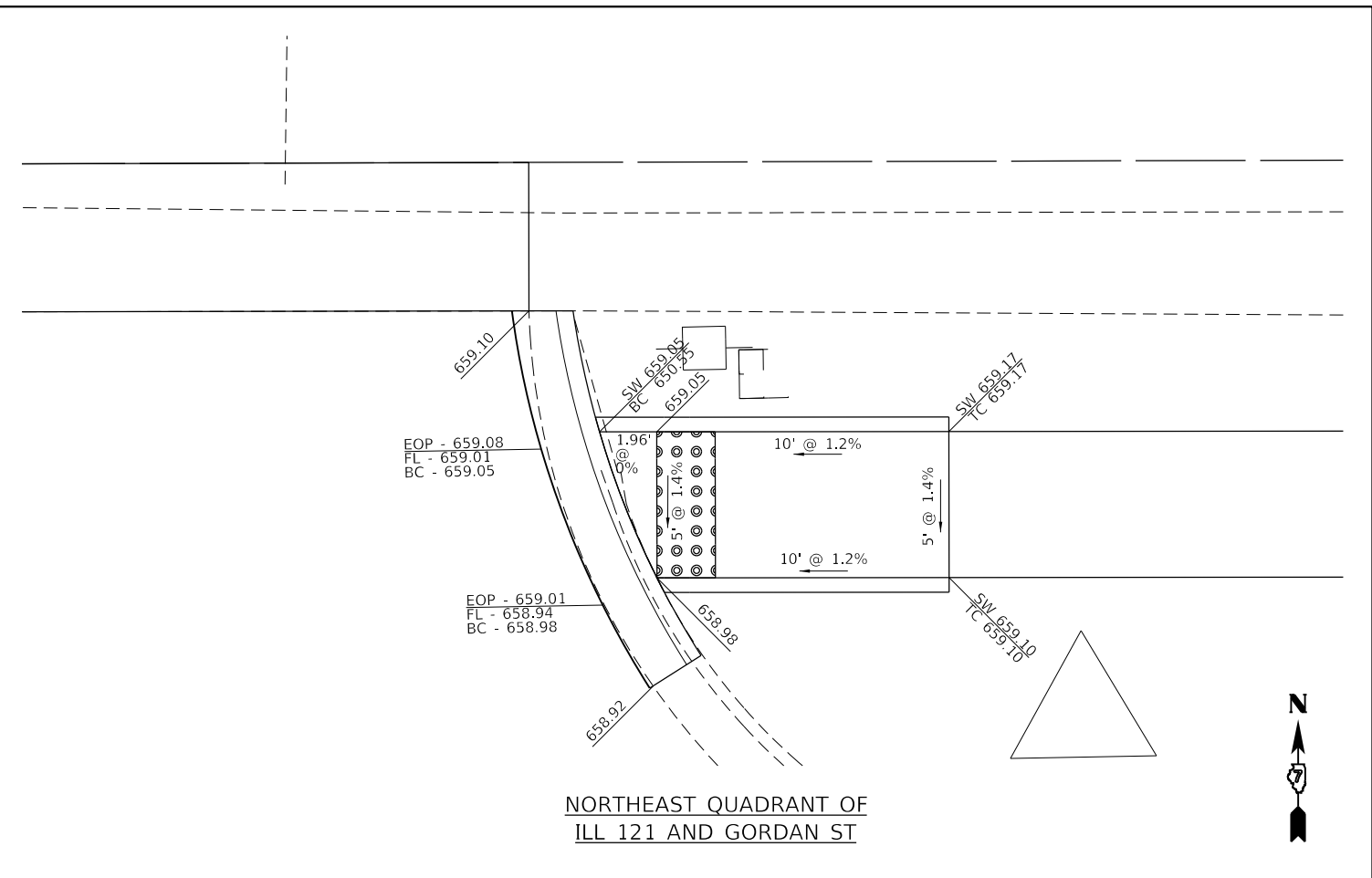
SCALE: SHEET NO. OF SHEETS STA. TO STA.

F.A.P. RTE.	SECTION	COUNTY	TOTAL SHEETS	SHEET NO.
0320	18-00056-00-SW	MOULTRIE	12	8
CONTRACT NO. 95980				
ILLINOIS FED. AID PROJECT				

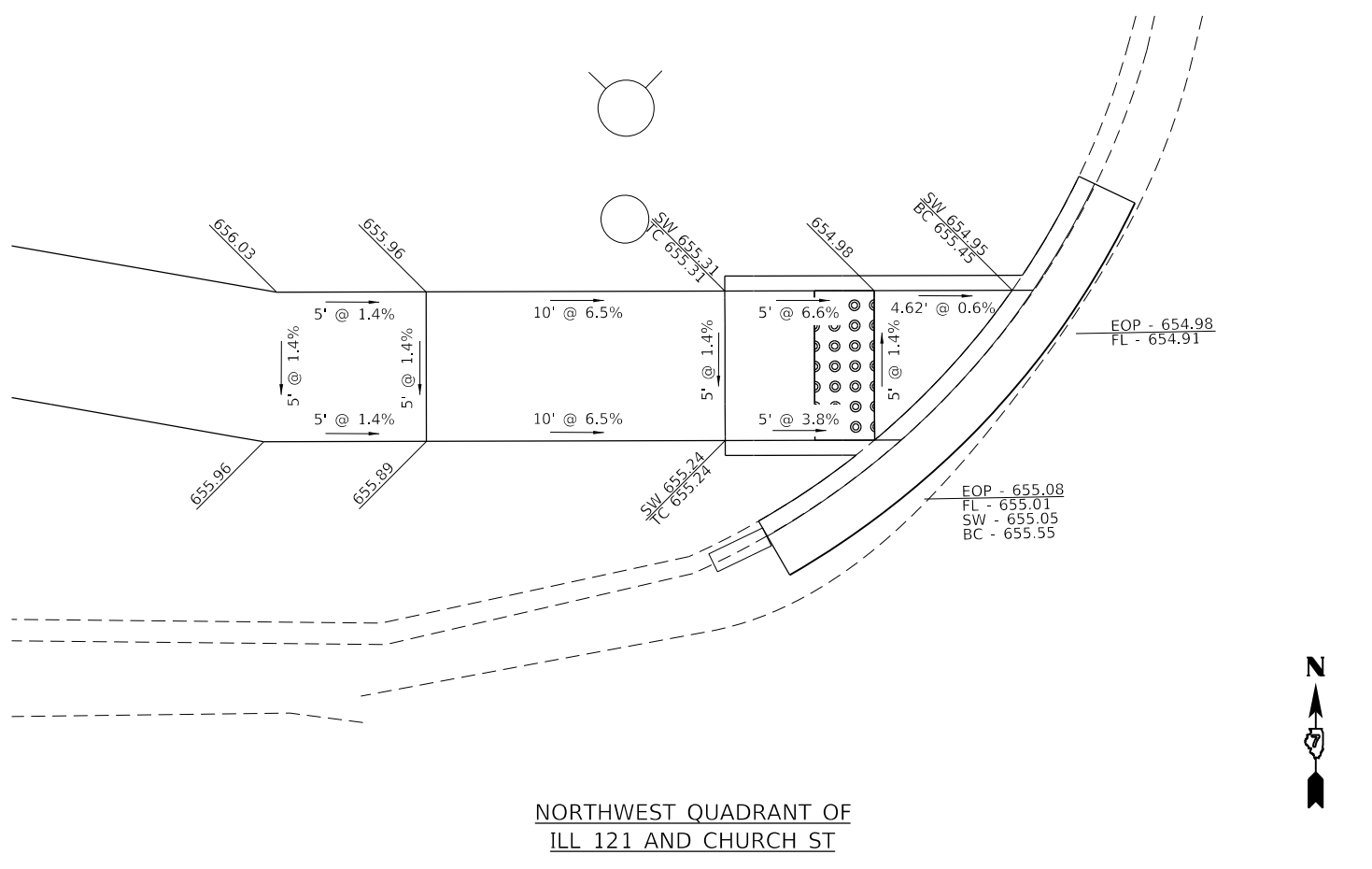




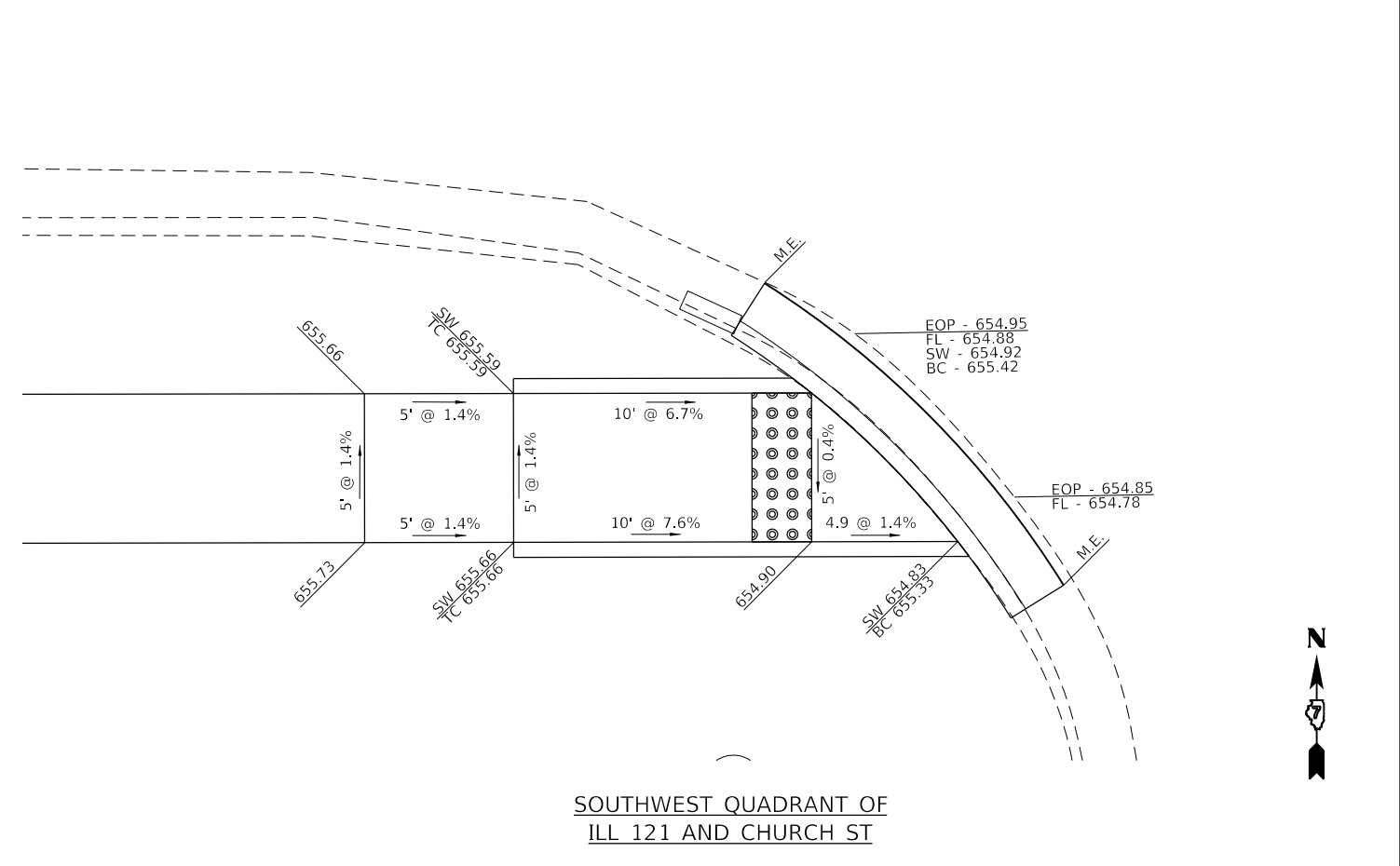
NORTHWEST QUADRANT OF  
ILL 121 AND GORDAN ST



NORTHEAST QUADRANT OF  
ILL 121 AND GORDAN ST



NORTHWEST QUADRANT OF  
ILL 121 AND CHURCH ST



SOUTHWEST QUADRANT OF  
ILL 121 AND CHURCH ST

FILE NAME = I:\Municipalities\ Village of Bethany\7080 ILL 121 Sidewalk\CADD\Civil\7080\_Sht08\_sidewalk\_details.dwg

USER NAME = rkocher	DESIGNED -	REVISED -
	DRAWN -	REVISED -
PLOT SCALE = 6,0000' / in.	CHECKED -	REVISED -
PLOT DATE = 6/30/2025	DATE -	REVISED -

**CHASTAIN & ASSOCIATES LLC**  
CONSULTING ENGINEERS

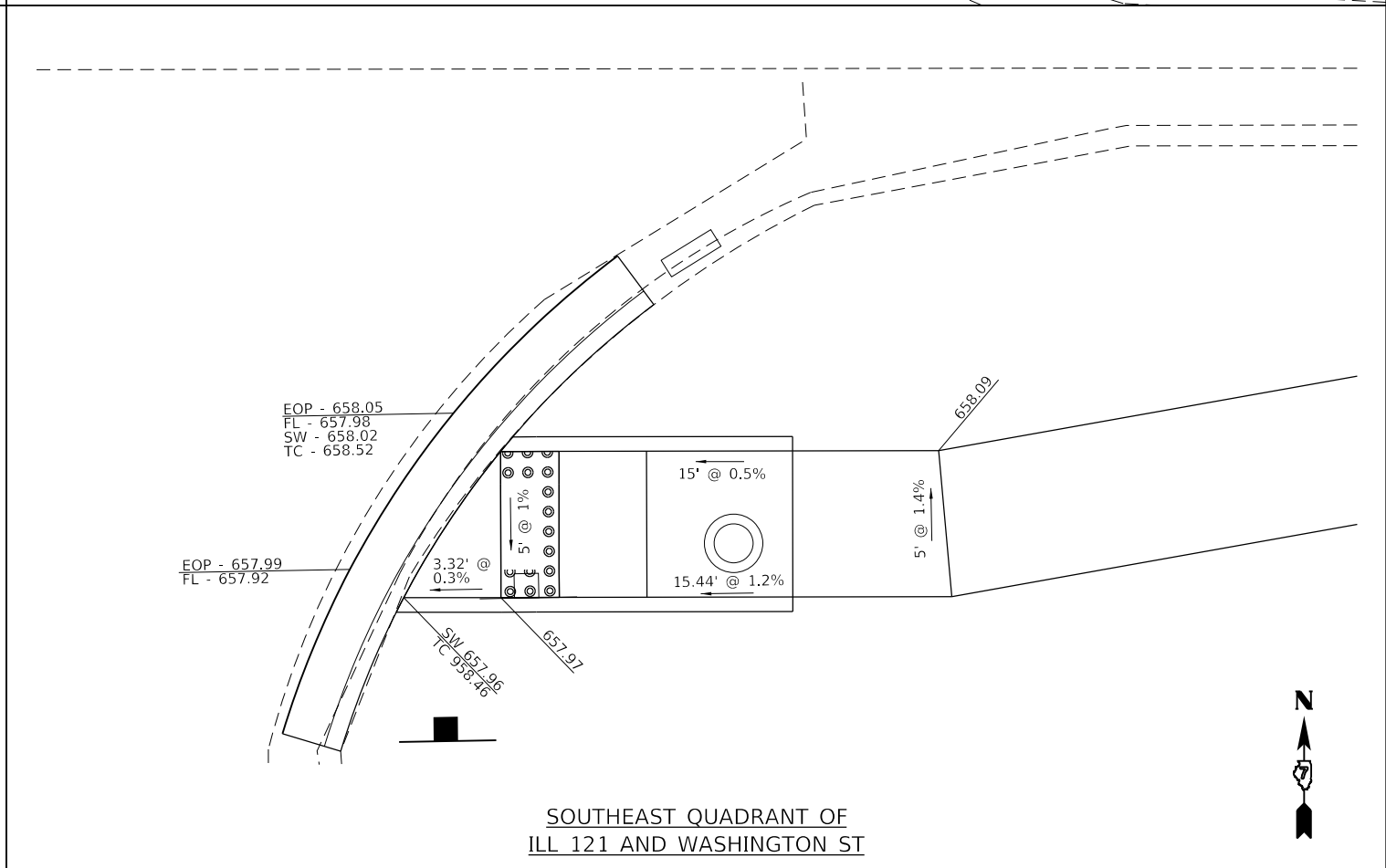
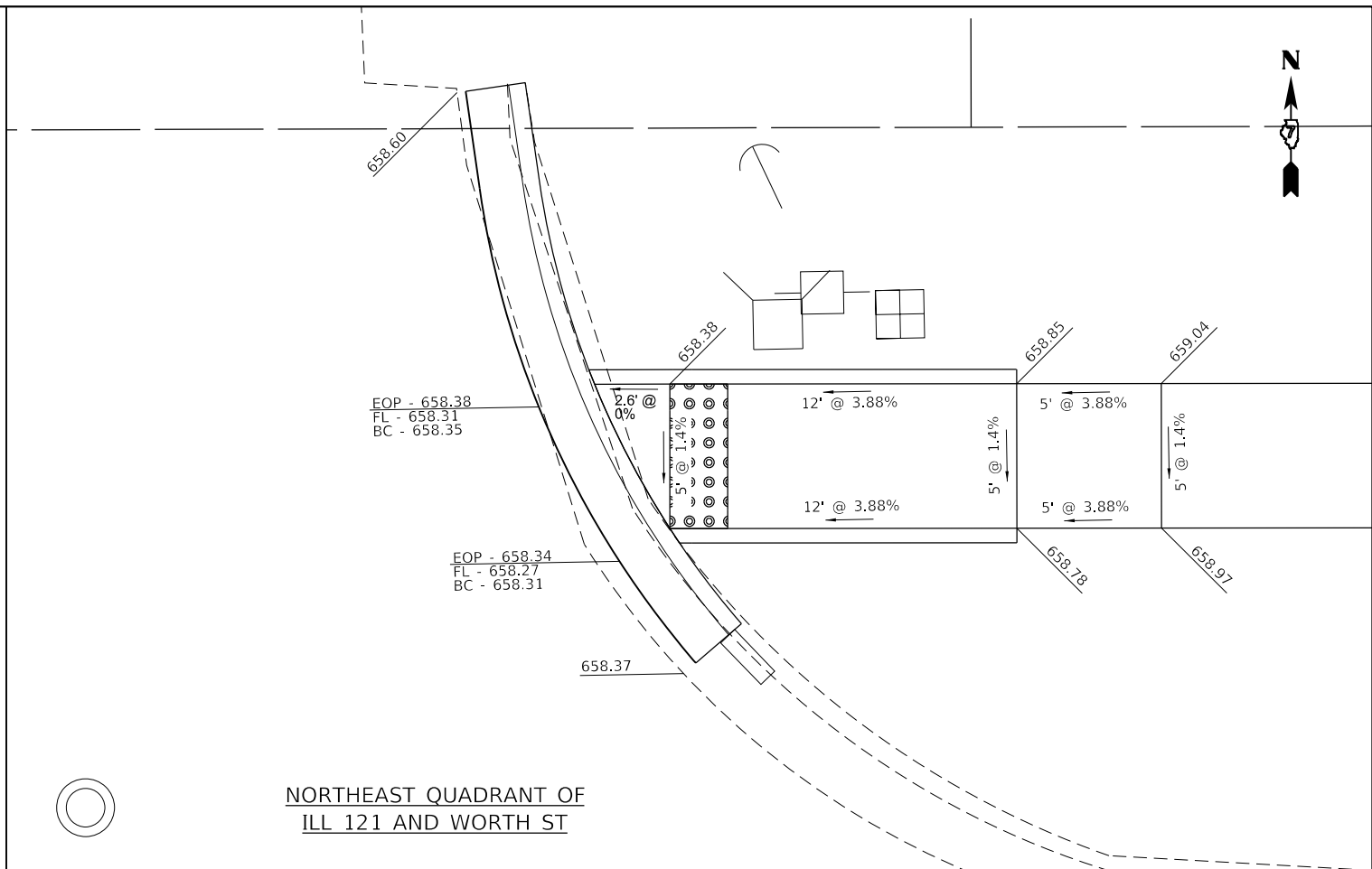
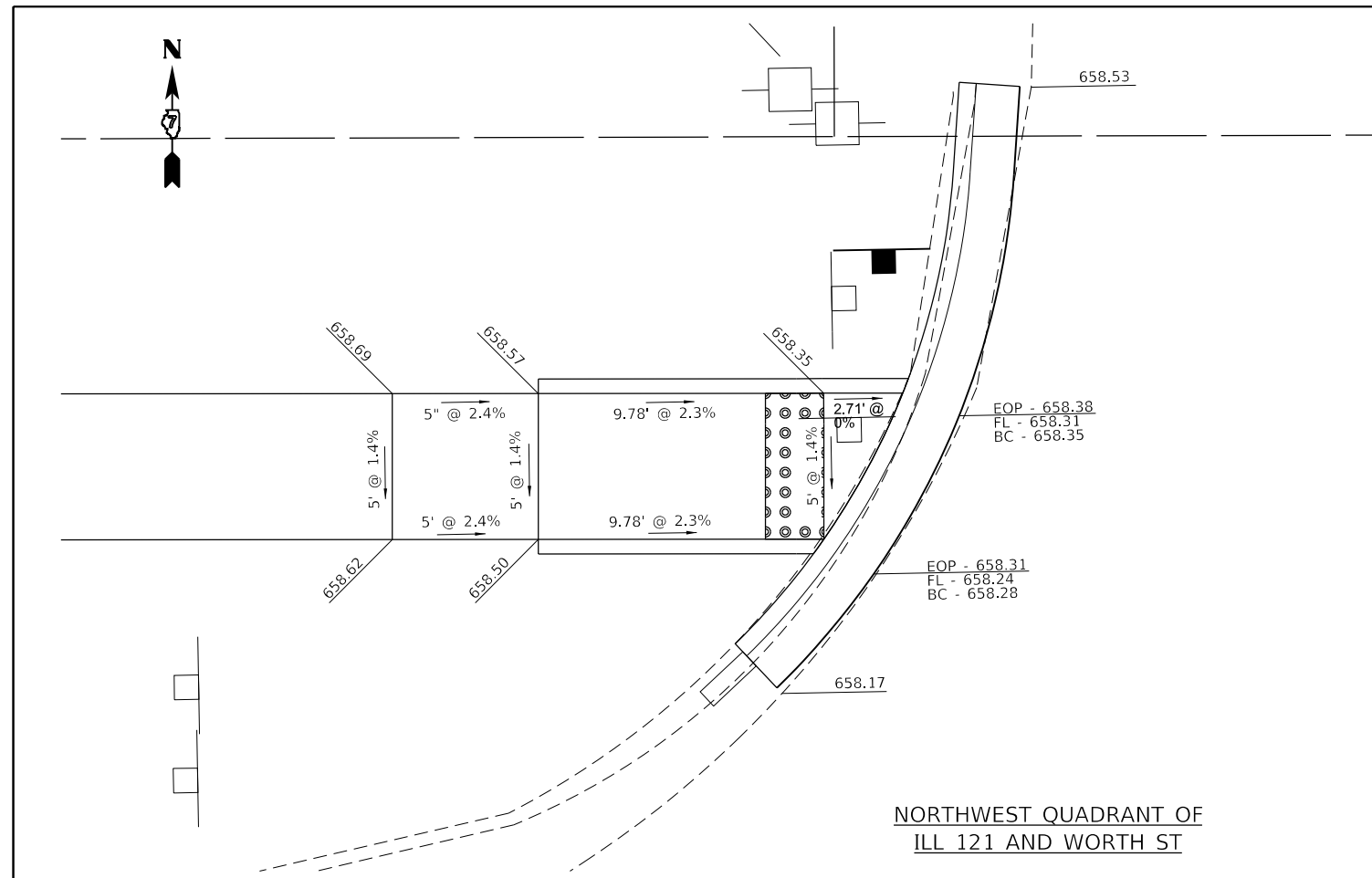
DECATUR (217) 422-8544  
SCHAUMBURG (773) 714-0050  
ROCKFORD (815) 489-0050  
184-001397

VILLAGE OF BETHANY - ILLINOIS ROUTE 121 SIDEWALK

SCALE: SHEET NO. OF SHEETS STA. TO STA.

F.A.P. RTE.	SECTION	COUNTY	TOTAL SHEETS	SHEET NO.
0320	18-00056-00-SW	MOULTRIE	12	9
CONTRACT NO. 95980				
ILLINOIS FED. AID PROJECT				

FILE NAME = I:\Municipalities\Village of Bethany\7050 ILL 121 Sidewalks\CADD\Civil\7050\_Sht10\_Sidewalk\_Details\_03.dgn



USER NAME = rkocher	DESIGNED -	REVISED -
	DRAWN -	REVISED -
PLOT SCALE = 6.0000' / 1"	CHECKED -	REVISED -
PLOT DATE = 6/30/2025	DATE -	REVISED -

**CHASTAIN & ASSOCIATES LLC**  
CONSULTING ENGINEERS

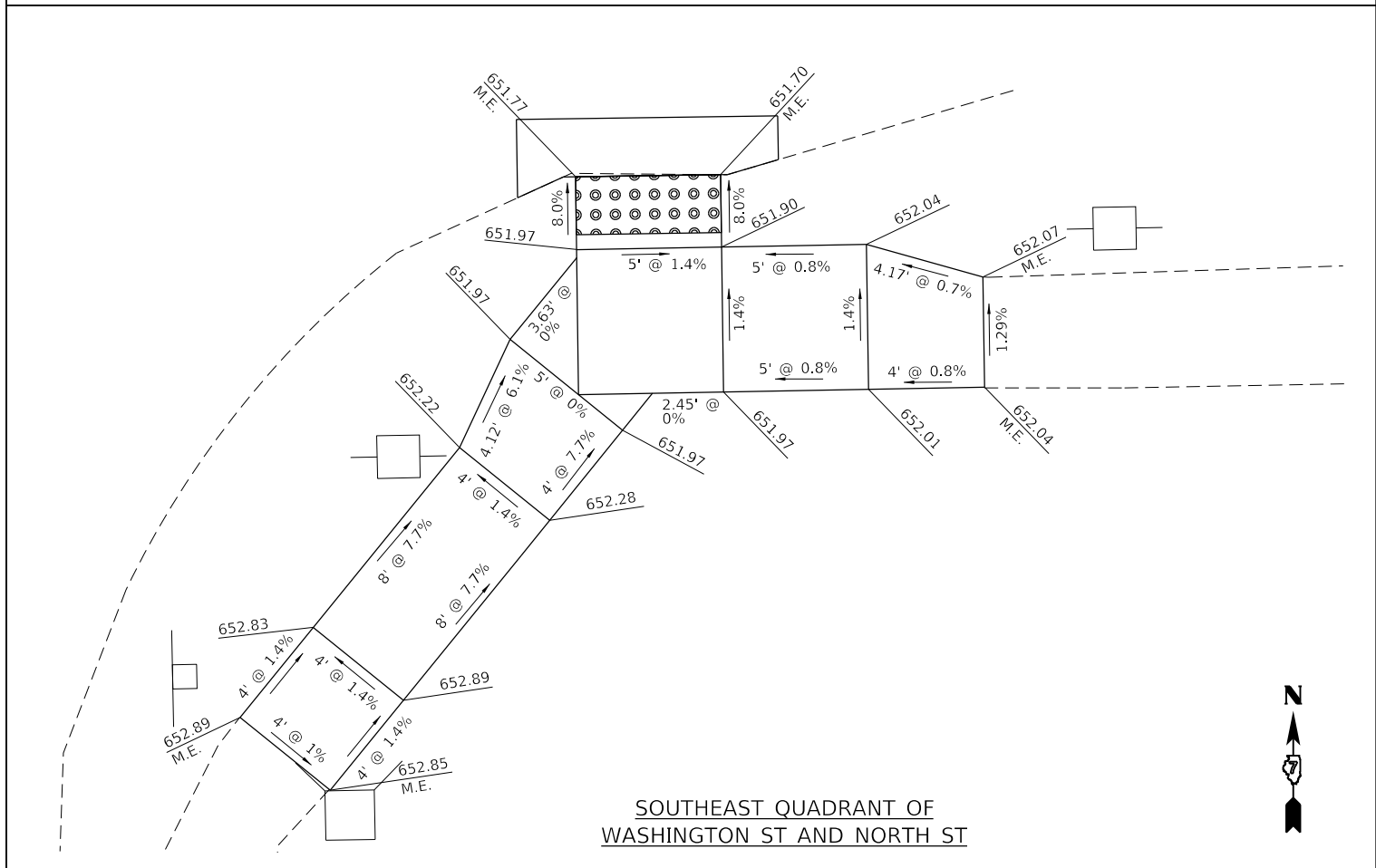
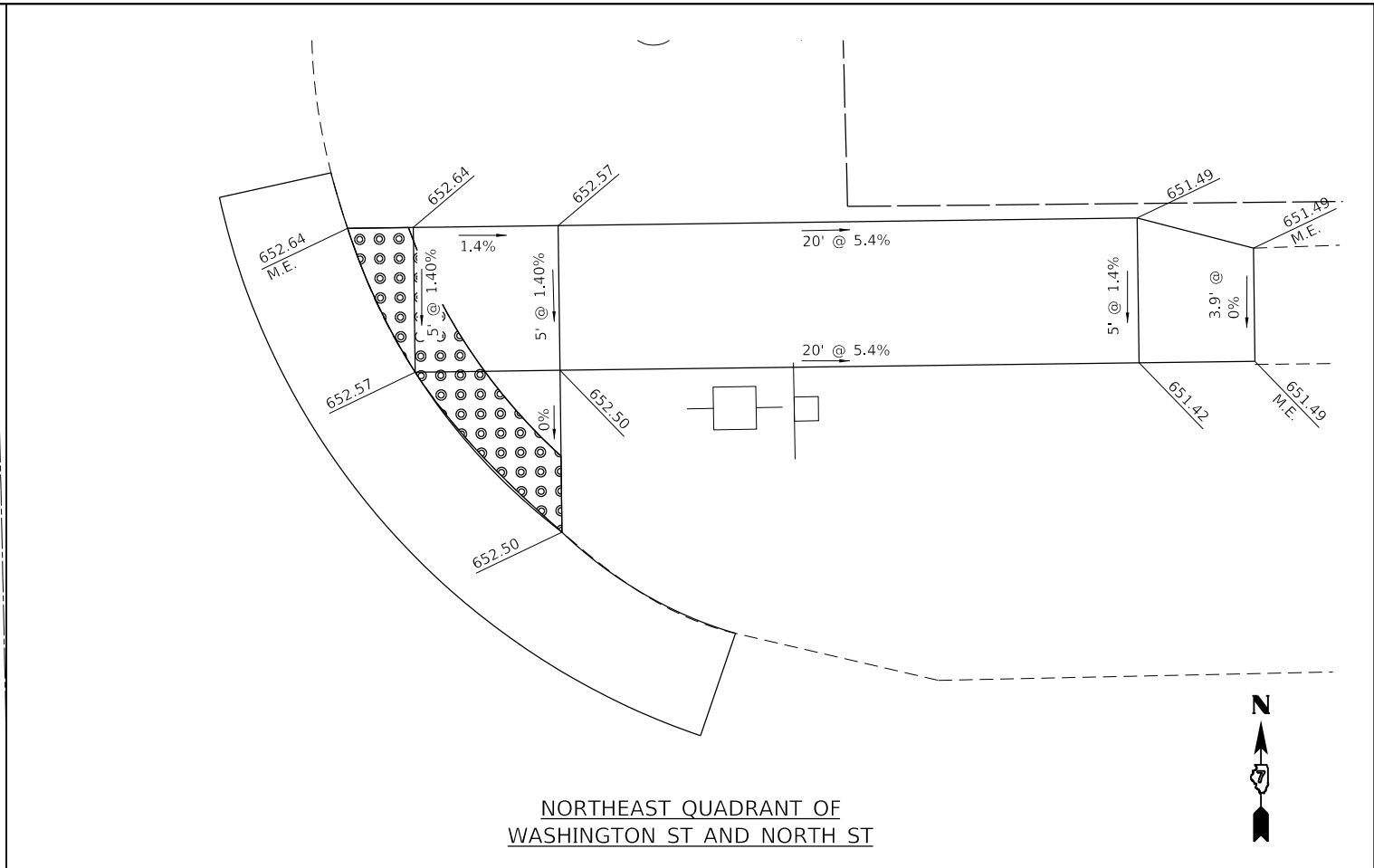
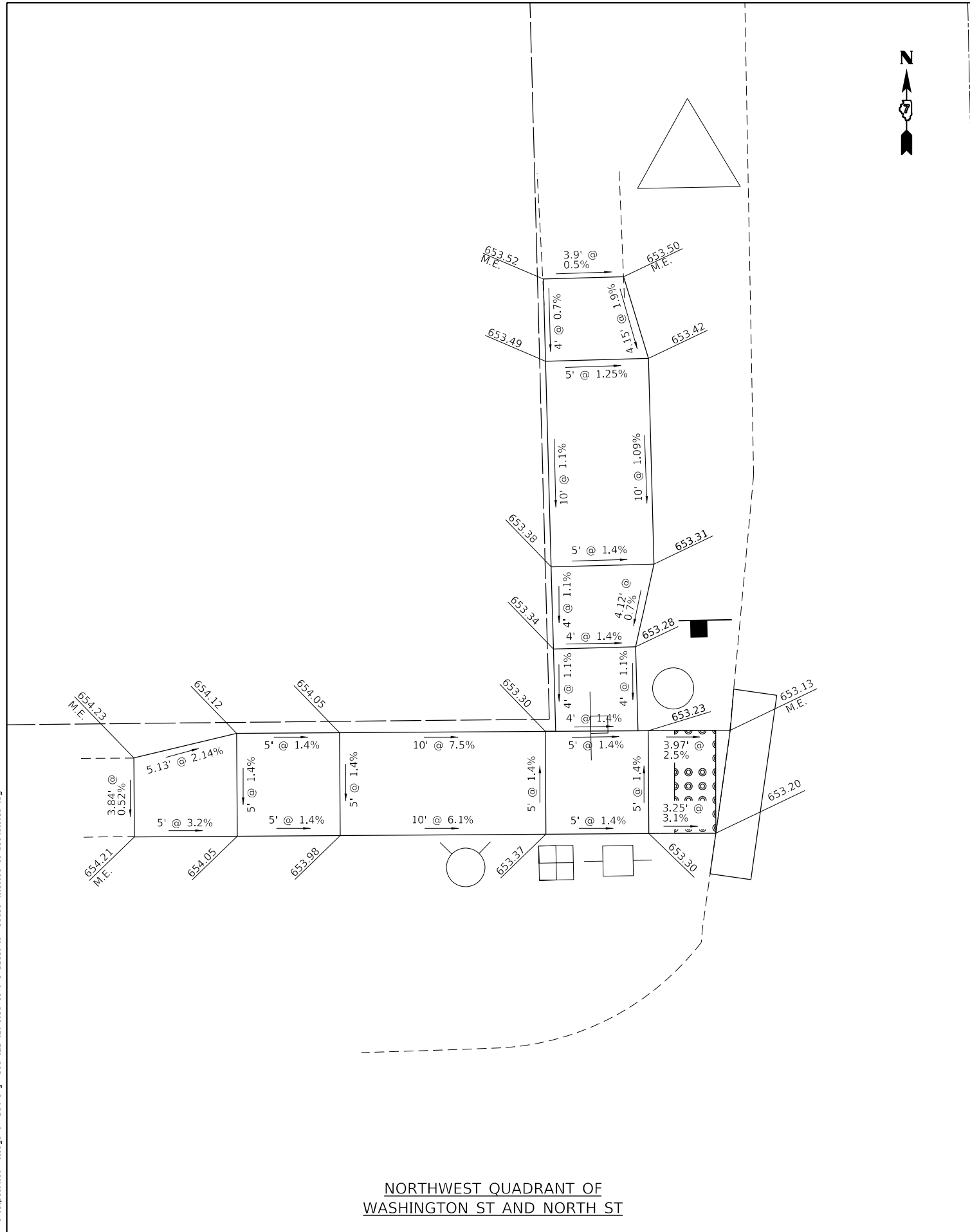
DECATUR (217) 422-8544  
SCHAUMBURG (773) 714-0050  
ROCKFORD (815) 489-0050  
184-001397

**SIDEWALK RAMP DETAILS**  
**VILLAGE OF BETHANY - ILLINOIS ROUTE 121 SIDEWALK**

SCALE: SHEET NO. OF SHEETS STA. TO STA.

F.A.P. RTE.	SECTION	COUNTY	TOTAL SHEETS	SHEET NO.
0320	18-00056-00-SW	MOULTRIE	12	10
CONTRACT NO. 95980				
ILLINOIS FED. AID PROJECT				

FILE NAME = I:\Municipalities\ Village of Bethany\70690 ILL 121 Sidewalks\CADD\Civil\70690\_Sht11\_sidewalk\_details\_04.dgn



USER NAME = rkocher	DESIGNED -	REVISED -
	DRAWN -	REVISED -
PLOT SCALE = 6,0000' / 1"	CHECKED -	REVISED -
PLOT DATE = 6/30/2025	DATE -	REVISED -

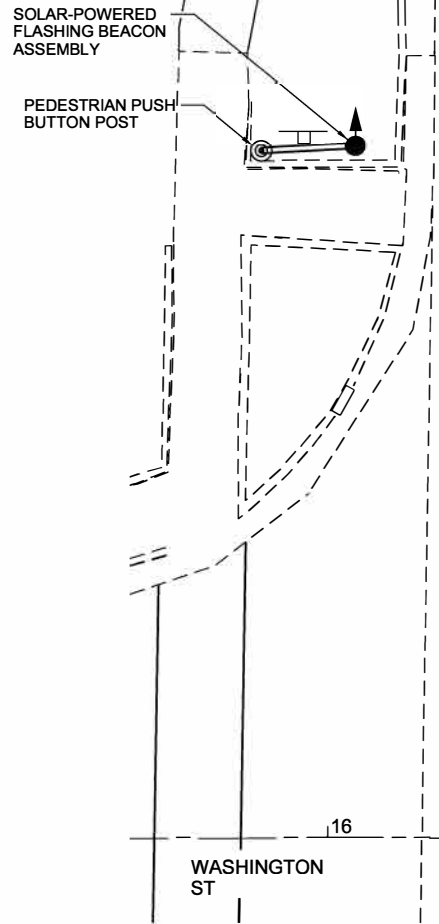
**CHASTAIN  
& ASSOCIATES LLC**  
CONSULTING ENGINEERS

DECATUR (217) 422-8544  
SCHAUMBURG (773) 714-0050  
ROCKFORD (815) 489-0050  
184-001397

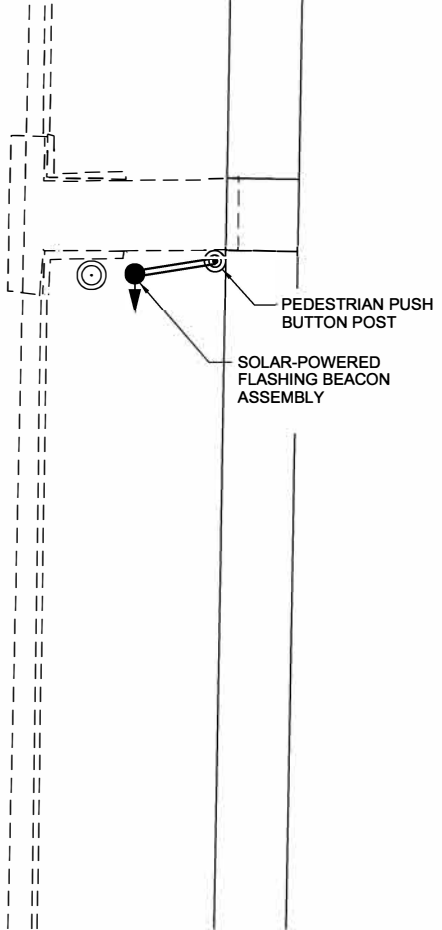
**SIDEWALK RAMP DETAILS  
VILLAGE OF BETHANY - ILLINOIS ROUTE 121 SIDEWALK**

SCALE:	SHEET NO.	OF SHEETS	STA.	TO STA.
--------	-----------	-----------	------	---------

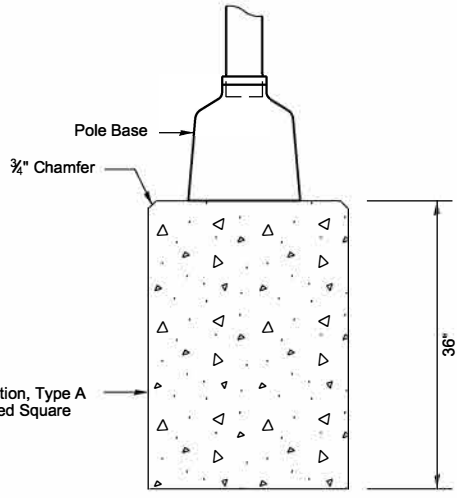
F.A.P. RTE.	SECTION	COUNTY	TOTAL SHEETS	SHEET NO.
0320	18-00056-00-SW	MOULTRIE	12	11
CONTRACT NO. 95980				
ILLINOIS FED. AID PROJECT				



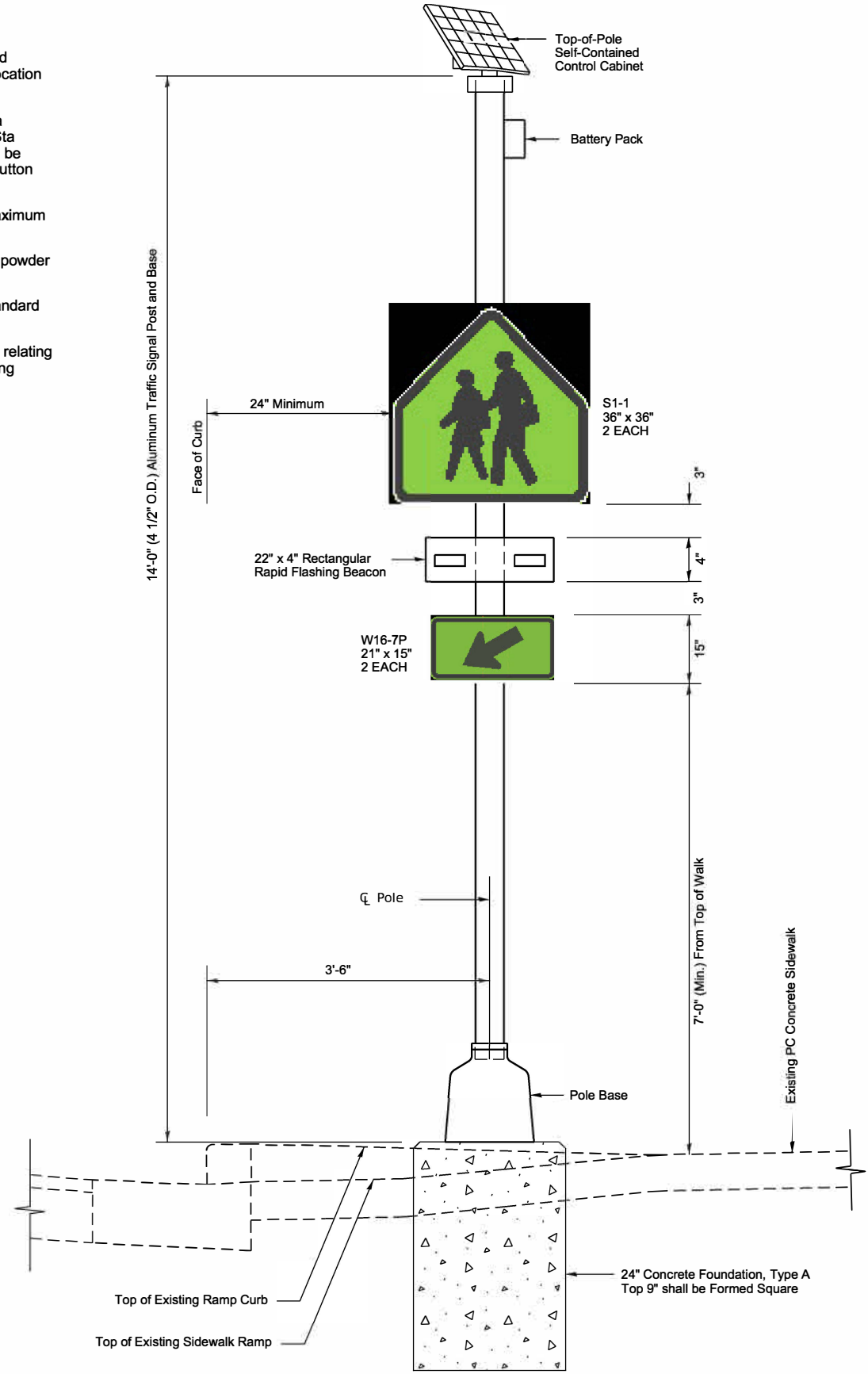
PLAN VIEW



- Pedestrian Crossing Signal System Notes:
1. The contractor shall furnish and install a Solar-Powered Flashing Beacon Assembly (Complete), at the crosswalk location shown in the plans.
  2. Signal at Sta 290+96.6, 18.7 RT shall be actuated by a push-button mounted on a separate push-button post at Sta 290+97.1, 25.2' RT. Signal at Sta 291+04.4, 21.5 LT shall be actuated by a push-button mounted on a separate push-button post at Sta 291+03.4, 27.0' LT.
  3. The face of the Pedestrian Push Buttons shall be a maximum of 10" from the face of curb.
  4. The aluminum traffic post and base shall have a black powder coat finish.
  5. The Pedestrian Push Button Housings shall have a standard black finish.
  6. See Special Provisions for payment and specifications relating to the installation of the Solar-Powered Pedestrian Crossing Signal System.



ELEVATION AT FOUNDATION



ELEVATION AT POLE

FILE NAME = I:\Municipalities\illage of Bethany\7858 ILL 121 Sidewalk\CAD\00\_Div1\7858\_Sht12\_Detail -Flashing Crossing Installation.dgn

USER NAME = rkocher	DESIGNED -	REVISED -
	DRAWN -	REVISED -
PLOT SCALE = 20.0000 / in.	CHECKED -	REVISED -
PLOT DATE = 6/30/2025	DATE -	REVISED -

**CHASTAIN & ASSOCIATES LLC**  
CONSULTING ENGINEERS

DECATUR (217) 422-8544  
SCHAUMBURG (773) 714-0050  
ROCKFORD (815) 489-0050  
184-001397

**SOLAR-POWERED FLASHING BEACON ASSEMBLY (COMPLETE)**  
**VILLAGE OF BETHANY - ILLINOIS ROUTE 121 SIDEWALK**

F.A. RTE.	SECTION	COUNTY	TOTAL SHEETS	SHEET NO.
	18-00056-00-SW	MOULTRIE	12	12
ILLINOIS FED. AID PROJECT			CONTRACT NO. 95980	

SCALE: SHEET NO. OF SHEETS STA. TO STA.