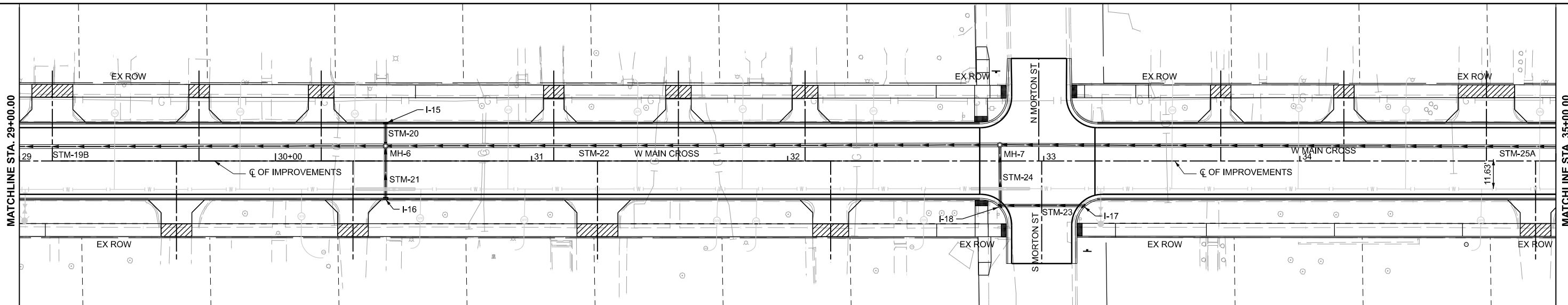


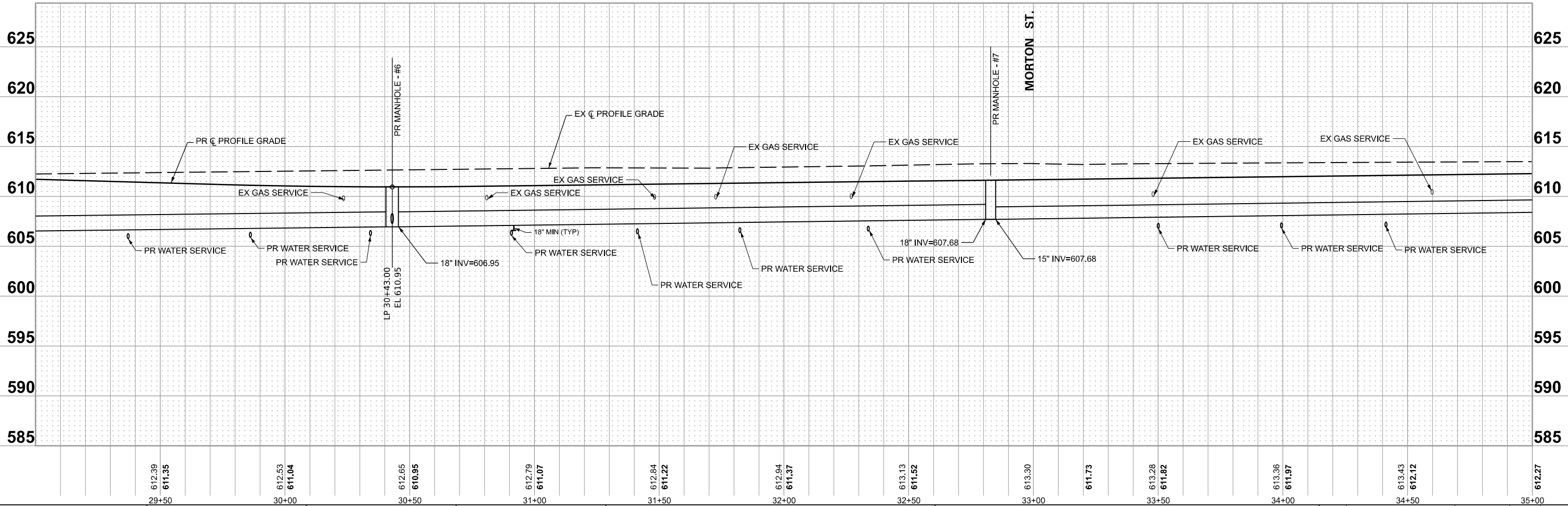
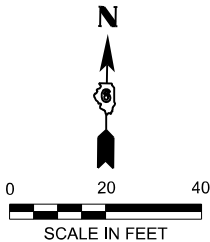
MODEL: P:\CL WESTCROSS - D67878 - W Main-Cross-Plan 2 (Sheet)
FILE NAME: P:\19E3342\FAU 7878 (West Main Cross) Sec (20-00065-00-RS)\CADD Sheets\24-28-D67878-ent_Wcross-Storm-PlanProf.dgn



STORM SEWER SCHEDULE (FOR SHEET 24)				
STRUCTURE #	STATION	OFFSET	DESCRIPTION	ELEVATIONS
MH-6	30+43	5.9' LT	60" MANHOLE, TYPE A W/ FLAT TOP, TYPE 1 FRAME W/ CLOSED LID	RIM ELEV=610.95
				18" W INV = 606.95
				12" N INV = 607.28
				18" E INV = 606.95
MH-7	32+83	6.3' LT	48" MANHOLE, TYPE A W/ FLAT TOP, TYPE 1 FRAME W/ CLOSED LID	12" S INV = 607.28
				RIM ELEV=611.52
				18" W INV = 607.68
				15" E INV = 607.68
				12" S INV = 608.72

STRUCTURE #	STATION	OFFSET	DESCRIPTION	ELEVATIONS
I-15	30+43	14.6 LT	INLET, TYPE A, TYPE 11 FRAME AND GRATE	FLOW LINE = 610.7 INV = 607.7
I-16	30+43	14.6 RT	INLET, TYPE A, TYPE 11 FRAME AND GRATE	FLOW LINE = 610.7 INV = 608.2
I-17	33+16	17.6 RT	INLET, TYPE A, TYPE 11V FRAME AND GRATE	FLOW LINE = 612.25 INV = 610.25
I-18	32+83	17.6 RT	INLET, TYPE B, TYPE 11V FRAME AND GRATE	FLOW LINE = 612.2 INV = 609.93

STORM SEWER PIPE SCHEDULE (FOR SHEET 24)		
PIPE #	DESCRIPTION	LENGTH
STM-19B	18" RCCP RUBBER GASKET CLASS A, TYPE 1 @ 0.3%	142'
STM-20	12" CLASS B (WATERMAIN QUALITY), TYPE 1 @ 5.7%	7.4'
STM-21	12" CLASS B (WATERMAIN QUALITY), TYPE 1 @ 4.8%	19.1'
STM-22	18" RCCP RUBBER GASKET CLASS A, TYPE 1 @ 0.3%	237.9'
STM-23	12" CLASS B (WATERMAIN QUALITY), TYPE 1 @ 1.0%	32.2'
STM-24	12" CLASS B (WATERMAIN QUALITY), TYPE 1 @ 5.4%	22.6'
STM-25A	15" RCCP RUBBER GASKET CLASS A, TYPE 1 @ 0.3%	216.1'



BENTON & ASSOCIATES, INC.

CONSULTING ENGINEERS / LAND SURVEYORS

1070 WEST LARKIN AVE.

JACKSONVILLE, IL 62550

PHONE: 217-245-4146 FAX: 217-245-4149

IL DESIGN FIRM REGISTRATION NO. 184-000852

USER NAME = rshaw

DESIGNED - GJS

DRAWN - RDS

CHECKED - SJB

PLOT DATE = 9/8/2025

REVISED -

REVISED -

REVISED -

REVISED -

DATE - JUNE 2025

STATE OF ILLINOIS

DEPARTMENT OF TRANSPORTATION

STORM SEWER PLAN AND PROFILE

WEST MAIN CROSS ST. ROADWAY IMPROVEMENTS

SCALE: 1"=20'

SHEET 3 OF 5 SHEETS

STA. 29+00.00 TO STA. 35+00.00

F.A.U. RTE. 7878

SECTION 20-00065-00-RS

COUNTY CHRISTIAN

TOTAL SHEETS 77

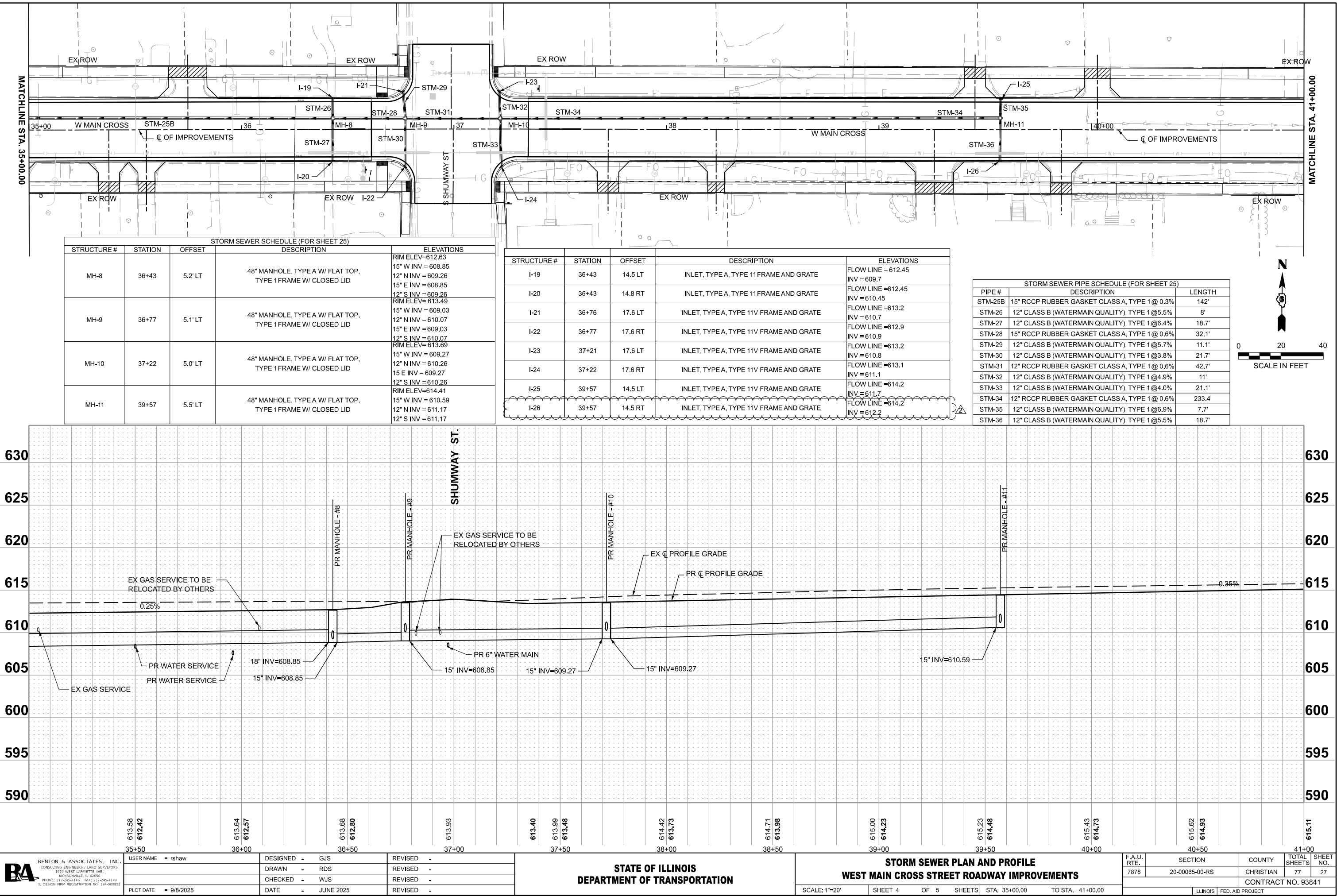
SHEET NO. 26

CONTRACT NO. 93841

ILLINOIS FED. AID PROJECT

REV. 09/08/25

MODEL: P:\CL WESTCROSS - D67878, W Main-Cross-Plan 3 (Sheet)
FILE NAME: P:\19E3342\FAU 7878 (West Main Cross) Sec (20-00065-00-RS)\CADD Sheets\24-28-D67878-ent_Wcross-Storm-PlanProf.dgn



STORM SEWER SCHEDULE (FOR SHEET 25)				
STRUCTURE #	STATION	OFFSET	DESCRIPTION	ELEVATIONS
MH-8	36+43	5.2' LT	48" MANHOLE, TYPE A W/ FLAT TOP, TYPE 1 FRAME W/ CLOSED LID	RIM ELEV=612.63 15" W INV = 608.85 12" N INV = 609.26 15" E INV = 608.85 12" S INV = 609.26
MH-9	36+77	5.1' LT	48" MANHOLE, TYPE A W/ FLAT TOP, TYPE 1 FRAME W/ CLOSED LID	RIM ELEV= 613.49 15" W INV = 609.03 12" N INV = 610.07 15" E INV = 609.03 12" S INV = 610.07
MH-10	37+22	5.0' LT	48" MANHOLE, TYPE A W/ FLAT TOP, TYPE 1 FRAME W/ CLOSED LID	RIM ELEV= 613.69 15" W INV = 609.27 12" N INV = 610.26 15" E INV = 609.27 12" S INV = 610.26
MH-11	39+57	5.5' LT	48" MANHOLE, TYPE A W/ FLAT TOP, TYPE 1 FRAME W/ CLOSED LID	RIM ELEV=614.41 15" W INV = 610.59 12" N INV = 611.17 12" S INV = 611.17

STRUCTURE #	STATION	OFFSET	DESCRIPTION	ELEVATIONS
I-19	36+43	14.5 LT	INLET, TYPE A, TYPE 11 FRAME AND GRATE	FLOW LINE = 612.45 INV = 609.7
I-20	36+43	14.8 RT	INLET, TYPE A, TYPE 11 FRAME AND GRATE	FLOW LINE = 612.45 INV = 610.45
I-21	36+76	17.6 LT	INLET, TYPE A, TYPE 11V FRAME AND GRATE	FLOW LINE = 613.2 INV = 610.7
I-22	36+77	17.6 RT	INLET, TYPE A, TYPE 11V FRAME AND GRATE	FLOW LINE = 612.9 INV = 610.9
I-23	37+21	17.6 LT	INLET, TYPE A, TYPE 11V FRAME AND GRATE	FLOW LINE = 613.2 INV = 610.8
I-24	37+22	17.6 RT	INLET, TYPE A, TYPE 11V FRAME AND GRATE	FLOW LINE = 613.1 INV = 611.1
I-25	39+57	14.5 LT	INLET, TYPE A, TYPE 11V FRAME AND GRATE	FLOW LINE = 614.2 INV = 611.7
I-26	39+57	14.5 RT	INLET, TYPE A, TYPE 11V FRAME AND GRATE	FLOW LINE = 614.2 INV = 612.2

STORM SEWER PIPE SCHEDULE (FOR SHEET 25)		
PIPE #	DESCRIPTION	LENGTH
STM-25B	15" RCCP RUBBER GASKET CLASS A, TYPE 1 @ 0.3%	142'
STM-26	12" CLASS B (WATERMAIN QUALITY), TYPE 1 @ 5.5%	8'
STM-27	12" CLASS B (WATERMAIN QUALITY), TYPE 1 @ 6.4%	18.7'
STM-28	15" RCCP RUBBER GASKET CLASS A, TYPE 1 @ 0.6%	32.1'
STM-29	12" CLASS B (WATERMAIN QUALITY), TYPE 1 @ 5.7%	11.1'
STM-30	12" CLASS B (WATERMAIN QUALITY), TYPE 1 @ 3.8%	21.7'
STM-31	12" RCCP RUBBER GASKET CLASS A, TYPE 1 @ 0.6%	42.7'
STM-32	12" CLASS B (WATERMAIN QUALITY), TYPE 1 @ 4.9%	11'
STM-33	12" CLASS B (WATERMAIN QUALITY), TYPE 1 @ 4.0%	21.1'
STM-34	12" RCCP RUBBER GASKET CLASS A, TYPE 1 @ 0.6%	233.4'
STM-35	12" CLASS B (WATERMAIN QUALITY), TYPE 1 @ 6.9%	7.7'
STM-36	12" CLASS B (WATERMAIN QUALITY), TYPE 1 @ 5.5%	18.7'



BENTON & ASSOCIATES, INC.
CONSULTING ENGINEERS / LAND SURVEYORS
1070 WEST LARINETTE AVE.
JACKSONVILLE, IL 62250
PHONE: 217-245-4146 FAX: 217-245-4149
IL DESIGN FIRM REGISTRATION NO. 184-000852

USER NAME = rshaw	DESIGNED - GJS	REVISED -
	DRAWN - RDS	REVISED -
	CHECKED - WJS	REVISED -
PLOT DATE = 9/8/2025	DATE - JUNE 2025	REVISED -

STATE OF ILLINOIS
DEPARTMENT OF TRANSPORTATION

STORM SEWER PLAN AND PROFILE
WEST MAIN CROSS STREET ROADWAY IMPROVEMENTS

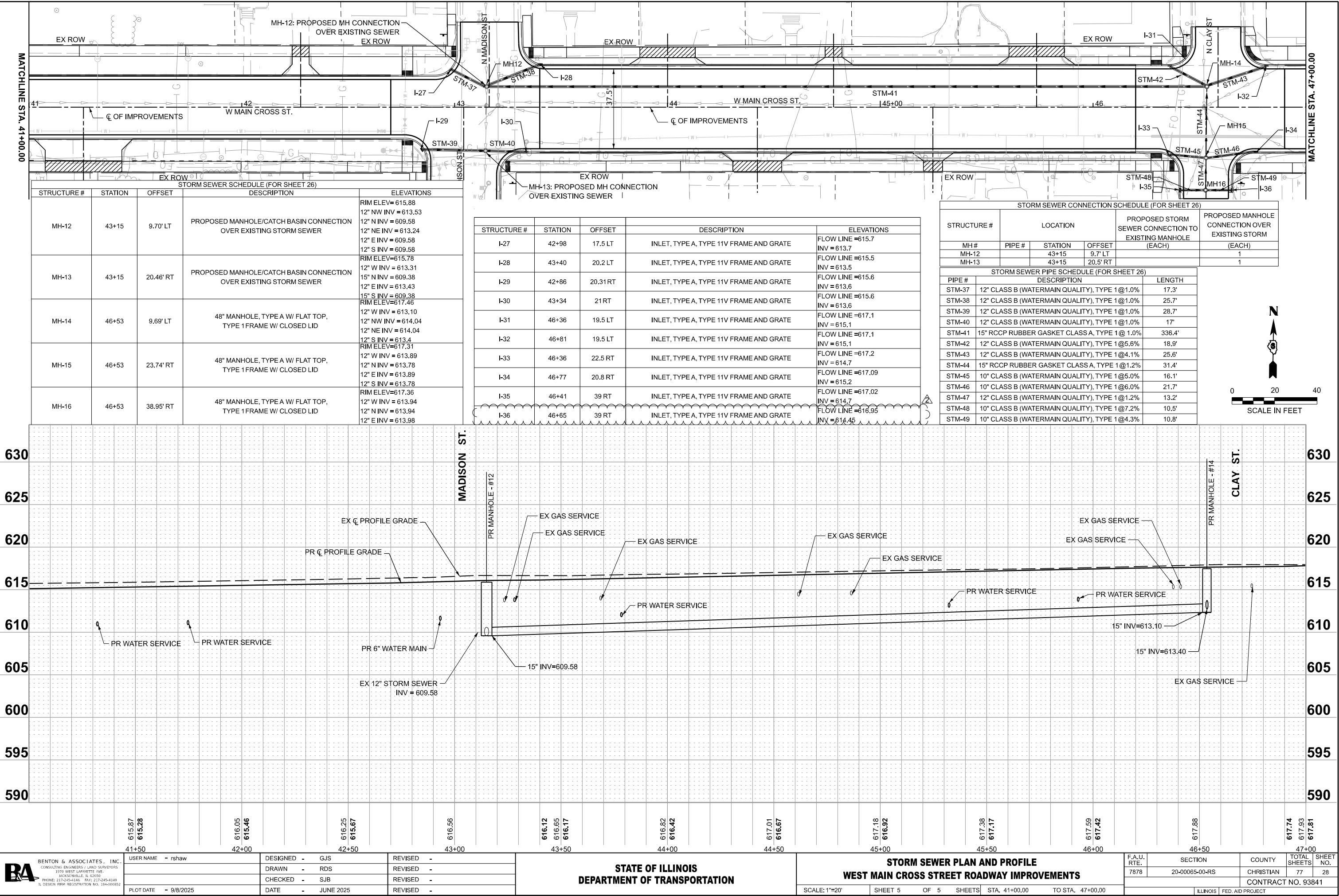
SCALE: 1"=20'

SHEET 4 OF 5 SHEETS

STA. 35+00.00 TO STA. 41+00.00

F.A.U. RTE.	SECTION	COUNTY	TOTAL SHEETS	SHEET NO.
7878	20-00065-00-RS	CHRISTIAN	77	27
CONTRACT NO. 93841				
ILLINOIS FED. AID PROJECT				

MODEL: P:\CL WESTCROSS - D67878 - W Main-Cross-Plan 4 (Sheet)
FILE NAME: P:\19E3342\FAU 7878 (West Main Cross) Sec (20-00065-00-RS)\CADD Sheets\24-28-D67878-ent_Wcross-Storm-PlanProf.dgn



BENTON & ASSOCIATES, INC.
CONSULTING ENGINEERS / LAND SURVEYORS
1070 WEST LARKIN AVE.
JACKSONVILLE, IL 62250
PHONE: 217-245-4146 FAX: 217-245-4149
IL DESIGN FIRM REGISTRATION NO. 184-000852

USER NAME = rshaw	DESIGNED - GJS	REVISED -
	DRAWN - RDS	REVISED -
	CHECKED - SJB	REVISED -
PLOT DATE = 9/8/2025	DATE - JUNE 2025	REVISED -

STATE OF ILLINOIS
DEPARTMENT OF TRANSPORTATION

STORM SEWER PLAN AND PROFILE
WEST MAIN CROSS STREET ROADWAY IMPROVEMENTS

SCALE: 1"=20' SHEET 5 OF 5 SHEETS STA. 41+00.00 TO STA. 47+00.00

F.A.U. RTE. 7878	SECTION 20-00065-00-RS	COUNTY CHRISTIAN	TOTAL SHEETS 77	SHEET NO. 28
CONTRACT NO. 93841				
ILLINOIS FED. AID PROJECT				