

STATE OF ILLINOIS
DEPARTMENT OF TRANSPORTATION

F.A.I. RTE	SECTION	COUNTY	TOTAL SHEETS	SHEET NO.
64	(41-9-1)PP-1	Jefferson	7	1
		ILLINOIS	CONTRACT NO. 78B70	

D99-080-25



**PROPOSED
HIGHWAY PLANS**

FAI ROUTE 64 (I-64)
SECTION (41-9-1)PP-1
PATCHING
JEFFERSON COUNTY

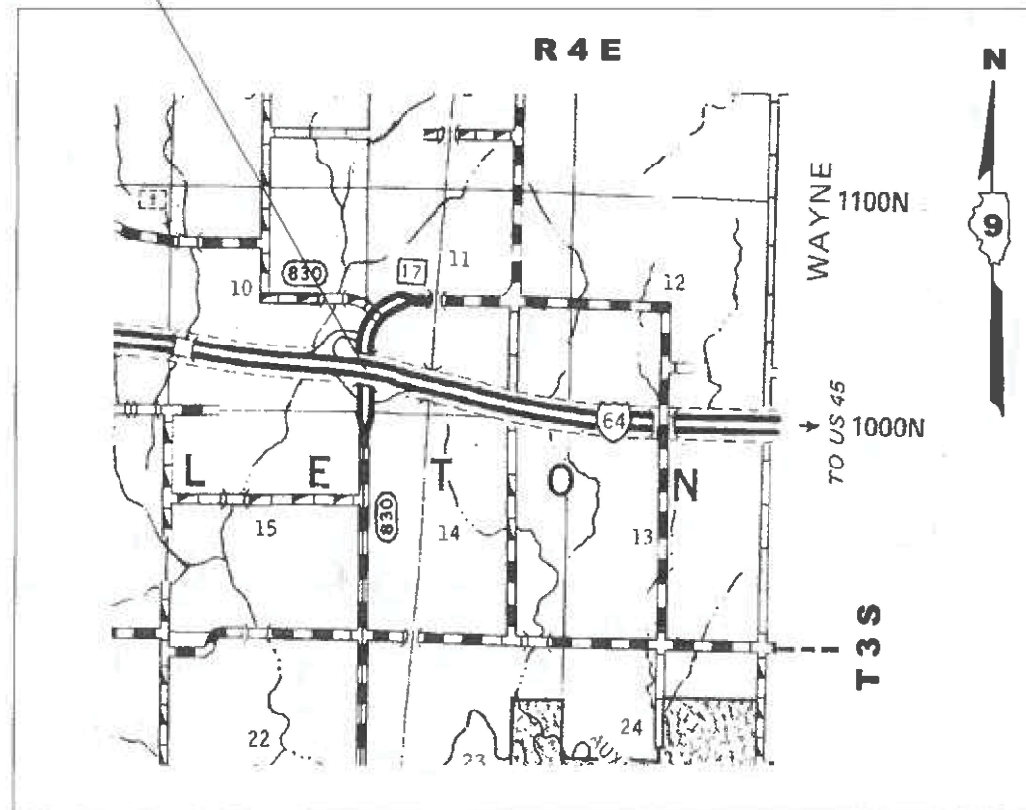
C-99-113-25

FOR INDEX OF SHEETS, SEE SHEET NO. 3

TRAFFIC DATA - 2023 ADT
550 WITH 14.5% TRUCKS

TOWNSHIPS
PENDLETON

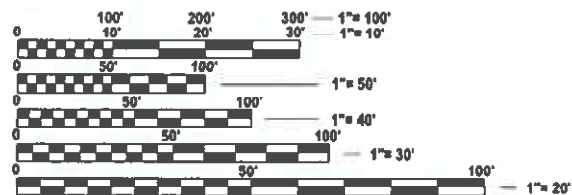
PROJECT LOCATION
RAMPS A, B, C AND D



DESIGN DESIGNATION : N/A

COORDINATE SYSTEM : ESPG: 102671-NAD 1983 STATE
PLANE ILLINOIS EAST FIPS 1201

POSTED SPEED : 55-70 MPH



FULL SIZE PLANS HAVE BEEN PREPARED USING STANDARD
ENGINEERING SCALES. REDUCED SIZED PLANS WILL NOT
CONFORM TO STANDARD SCALES. IN MAKING MEASUREMENTS
ON REDUCED PLANS, THE ABOVE SCALES MAY BE USED.

J.U.L.I.E.
JOINT UTILITY LOCATION INFORMATION FOR EXCAVATION
1-800-892-0123
OR 811

PROJECT ENGINEER: NATHAN TAYLOR
PROJECT MANAGER: ZACH RODELY

CONTRACT NO. 78B70

GROSS LENGTH = 6064 FT. = 1.15 MILE
NET LENGTH = 6064 FT. = 1.15 MILE

STATE OF ILLINOIS
DEPARTMENT OF TRANSPORTATION

SUBMITTED July 14 2025
Rosa S. Romano
REGIONAL ENGINEER

August 15 2025
[Signature]
ENGINEER OF DESIGN AND ENVIRONMENT

August 15 2025
[Signature]
DIRECTOR OF HIGHWAYS PROJECT IMPLEMENTATION

**PRINTED BY THE AUTHORITY
OF THE STATE OF ILLINOIS**

MODEL: Signature Sheet (Sheet)
FILE NAME: c:\pwworking\illinois\pwworking\117249\0978870-SHA-Cover_Sht.dgn

Prepared By: 
DISTRICT STUDIES & PLANS ENGINEER

Examined By: _____
DISTRICT LAND ACQUISITION ENGINEER

Examined By: 
DISTRICT PROGRAM DEVELOPMENT ENGINEER

Examined By: 
DISTRICT OPERATIONS ENGINEER

Examined By: _____
DISTRICT PROJECT IMPLEMENTATION ENGINEER

Examined By: 
DISTRICT CONSTRUCTION ENGINEER

Examined By: 
DISTRICT MATERIALS ENGINEER

USER NAME	zachary.rodely	DESIGNED	-	REVISED	-
		DRAWN	-	REVISED	-
		CHECKED	-	REVISED	-
PLT DATE	5/29/2025	DATE	-	REVISED	-

STATE OF ILLINOIS
DEPARTMENT OF TRANSPORTATION

SIGNATURE SHEET

SCALE: SHEET 2 OF 7 SHEETS STA. TO STA.

F&I RTE.	SECTION	COUNTY	TOTAL SHEETS	SHEET NO.
64	(41-9-1)PP-1	Jefferson	7	2
			CONTRACT NO. 78B70	
ILLINOIS FED. AID PROJECT				

GENERAL NOTES

COMMITMENTS: NONE

INDEX OF SHEETS

SHEET NO	DESCRIPTION
1	COVER SHEET
2	SIGNATURE SHEET
3	GENERAL NOTES, INDEX OF SHEETS, HIGHWAY STANDARDS, LIST OF COMMITMENTS
4	SUMMARY OF QUANTITIES
5	SCHEDULES
6	RAMP DETAIL
7	CHANGEABLE MESSAGE BOARD LOCATIONS

HIGHWAY STANDARDS

- 000001-08 STANDARD SYMBOLS, ABBREVIATIONS AND PATTERNS
- 001006 DECIMAL OF AN INCH AND OF A FOOT
- 420001-10 PAVEMENT JOINTS
- 420701-03 PAVEMENT WELDED WIRE REINFORCEMENT
- 442101-09 CLASS B PATCHES
- 701001-02 OFF-ROAD OPERATIONS, 2L, 2W, MORE THAN 15 FT AWAY
- 701006-05 OFF-ROAD OPERATIONS, 2L, 2W, 15 FT TO 24 IN FROM PAVEMENT EDGE
- 701011-04 OFF-ROAD MOVING OPERATIONS, 2L, 2W, DAY ONLY
- 701101-05 OFF-ROAD OPERATIONS, MULTILANE, 15 FT TO 24 IN FROM PAVEMENT EDGE
- 701106-02 OFF-ROAD OPERATIONS, MULTILANE, MORE THAN 15 FT AWAY
- 701451-05 RAMP CLOSURE FREEWAY_EXPRESSWAY
- 701901-10 TRAFFIC CONTROL DEVICES

MODEL: Index Gen Notes [Sheet]
 FILE NAME: c:\p\work\pav\illinois\mcd117249\0978B70-ShtB-Index_GenNotes.dgn

USER NAME = Nathan.Taylor	DESIGNED -	REVISED -	STATE OF ILLINOIS DEPARTMENT OF TRANSPORTATION	INDEX, GEN NOTES, STANDARDS AND LIST OF COMMITMENTS	F.A.I RTE.	SECTION	COUNTY	TOTAL SHEETS	SHEET NO.	
	DRAWN -	REVISED -			64	(41-9-1)PP-1	Jefferson	7	3	
	CHECKED -	REVISED -			CONTRACT NO. 78B70					
PLOT DATE = 7/15/2025	DATE -	REVISED -			SCALE:	SHEET 3	OF 7	SHEETS	STA.	TO STA.

SUMMARY OF QUANTITIES

COUNTY:	JEFFERSON
ROUTE:	FAI 64
FUNDING:	100% STATE
LOCATION:	RURAL
TOTAL QUANTITY:	ROADWAY 0005

CODE NUMBER	ITEM DESCRIPTION	UNIT	TOTAL QUANTITY	ROADWAY 0005
4420050	WELDED WIRE REINFORCEMENT	SQ YD	27	27
44200934	CLASS B PATCHES, TYPE II, 8 INCH	SQ YD	363	363
44200942	CLASS B PATCHES, TYPE III, 8 INCH	SQ YD	36	36
44200944	CLASS B PATCHES, TYPE IV, 8 INCH	SQ YD	27	27
44201298	DOWEL BARS 1 1/4"	EACH	1,008	1,008
44213200	SAW CUTS	FOOT	2,194	2,194
67100100	MOBILIZATION	L SUM	1	1
70100820	TRAFFIC CONTROL AND PROTECTION, STANDARD 701451	L SUM	1	1
70107025	CHANGEABLE MESSAGE SIGN	CAL DA	84	84

MODEL: SOQ (Sheet)
FILE NAME: c:\p\work\pavilion\lay\pmod117249\0978B70-ShtC-SOQ.dgn

PATCHING SCHEDULE EB RAMPS

RAMP C (PROCEEDING EAST)									
NUMBER	LENGTH (FOOT)	WIDTH (FOOT)	AREA (SQ YD)	STA.	CLASS B PATCHES (TYPE II) 8 INCH	CLASS B PATCHES (TYPE III) 8 INCH	CLASS B PATCHES (TYPE IV) 8 INCH	SAW CUTS	DOWEL BARS 1-1/4"
	(INFO ONLY)				(SQ YD)	(SQ YD)	(SQ YD)	(FOOT)	(EACH)
1	6	16	10.7	10+50	11			60	28
2	6	16	10.7	10+50	11			60	28
3	6	16	10.7	12+00	11			60	28
4	6	16	10.7	12+00	11			60	28
5	6	16	10.7	12+00	11			60	28
6	6	16	10.7	12+00	11			60	28
7	6	16	10.7	12+00	11			60	28
8	6	16	10.7	16+50	11			60	28
9	6	16	10.7	16+50	11			60	28
10	6	16	10.7	16+50	11			60	28
11	6	16	10.7	16+50	11			60	28
12	6	16	10.7	16+50	11			60	28
SUB-TOTAL RAMP C					132			720	336

RAMP D (PROCEEDING EAST)									
NUMBER	LENGTH (FOOT)	WIDTH (FOOT)	AREA (SQ YD)	STA.	CLASS B PATCHES (TYPE II) 8 INCH	CLASS B PATCHES (TYPE III) 8 INCH	CLASS B PATCHES (TYPE IV) 8 INCH	SAW CUTS	DOWEL BARS 1-1/4"
	(INFO ONLY)				(SQ YD)	(SQ YD)	(SQ YD)	(FOOT)	(EACH)
1	6	16	10.7	1+00	11			60	28
2	6	16	10.7	2+00	11			60	28
3	6	16	10.7	2+00	11			60	28
4	6	16	10.7	2+00	11			60	28
5	6	16	10.7	2+00	11			60	28
6	6	16	10.7	2+00	11			60	28
7	6	16	10.7	10+00	11			60	28
8	6	16	10.7	10+00	11			60	28
SUB-TOTAL RAMP D					88			480	224

PATCHING SCHEDULE WB RAMPS

RAMP B (PROCEEDING WEST)									
NUMBER	LENGTH (FOOT)	WIDTH (FOOT)	AREA (SQ YD)	STA.	CLASS B PATCHES (TYPE II) 8 INCH	CLASS B PATCHES (TYPE III) 8 INCH	CLASS B PATCHES (TYPE IV) 8 INCH	SAW CUTS	DOWEL BARS 1-1/4"
	(INFO ONLY)				(SQ YD)	(SQ YD)	(SQ YD)	(FOOT)	(EACH)
1	6	16	10.7	17+00	11			60	28
2	6	16	10.7	19+00	11			60	28
3	6	16	10.7	20+00	11			60	28
4	6	16	10.7	21+00	11			60	28
5	6	16	10.7	21+00	11			60	28
6	10	16	17.8	21+00		18		68	28
SUB-TOTAL RAMP B					55	18		368	168

RAMP A (PROCEEDING WEST)										
NUMBER	LENGTH (FOOT)	WIDTH (FOOT)	AREA (SQ YD)	STA.	CLASS B PATCHES (TYPE II) 8 INCH	CLASS B PATCHES (TYPE III) 8 INCH	CLASS B PATCHES (TYPE IV) 8 INCH	SAW CUTS	DOWEL BARS 1-1/4"	WELDED WIRE REINFORCEMENT
	(INFO ONLY)				(SQ YD)	(SQ YD)	(SQ YD)	(FOOT)	(EACH)	(SQ YD)
1	6	16	10.7	1+05	11			60	28	
2	6	16	10.7	2+00	11			60	28	
3	6	16	10.7	3+00	11			60	28	
4	6	16	10.7	4+00	11			60	28	
5	6	16	10.7	6+00	11			60	28	
6	6	16	10.7	8+00	11			60	28	
7	6	16	10.7	9+00	11			60	28	
8	6	16	10.7	11+00	11			60	28	
9	10	16	17.8	11+00		18		68	28	
10	15	16	26.7	11+00			27	78	28	27
SUB-TOTAL RAMP A					88	18	27	626	280	27
SUB-TOTAL RAMP C					132			720	336	
SUB-TOTAL RAMP D					88			480	224	
SUB-TOTAL RAMP B					55	18		368	168	
PROJECT TOTALS					363	36	27	2194	1008	27

MODEL: Patching Schedules (Sheet)
FILE NAME: c:\p\work\pav\sch\lay\pmd\117249\0978B70-ShtE-Schedules.dgn

USER NAME = zachary.rodely	DESIGNED -	REVISED -
	DRAWN -	REVISED -
	CHECKED -	REVISED -
PLOT DATE = 5/29/2025	DATE -	REVISED -

**STATE OF ILLINOIS
DEPARTMENT OF TRANSPORTATION**

PATCHING SCHEDULES

SCALE: SHEET 5 OF 7 SHEETS STA. TO STA.

F.A.I RTE.	SECTION	COUNTY	TOTAL SHEETS	SHEET NO.
64	(41-9-1)PP-1	Jefferson	7	5
CONTRACT NO. 78B70				
ILLINOIS FED. AID PROJECT				



MODEL: Ramp Detail-3 (Sheet)
 FILE NAME: c:\p\work\wis\dist\lay\mdd117249\0978870-ShtS-DistrictS.dwg

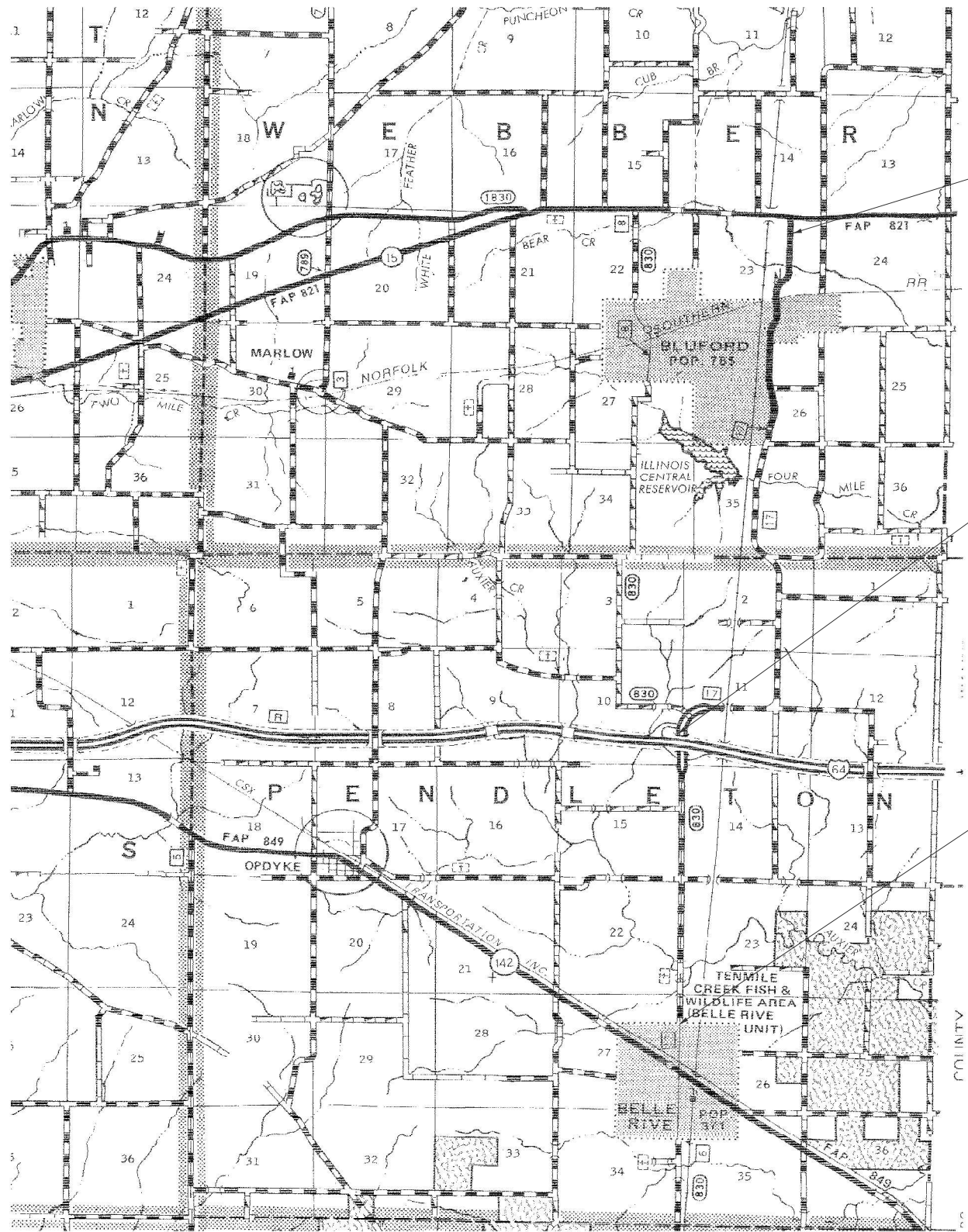
USER NAME = zachary.rodely	DESIGNED -	REVISED -
	DRAWN -	REVISED -
	CHECKED -	REVISED -
PLOT DATE = 5/29/2025	DATE -	REVISED -

**STATE OF ILLINOIS
DEPARTMENT OF TRANSPORTATION**

RAMP DETAIL

SCALE: SHEET 6 OF 7 SHEETS STA. TO STA.

F.A.I RTE.	SECTION	COUNTY	TOTAL SHEETS	SHEET NO.
64	(41-9-1)PP-1	Jefferson	7	6
CONTRACT NO. 78B70				
ILLINOIS FED. AID PROJECT				



CHANGABLE MESSAGE BOARD LOCATION 1

PROJECT LOCATION

CHANGABLE MESSAGE BOARD LOCATION 2

NOTES:

LOCATION 1 MESSAGE BOARD SHALL BE PLACED NORTH OF BLUFFORD IMMEDIATELY SOUTH OF IL 15 ON MARKHAM ROAD.

LOCATION 2 MESSAGE BOARD SHALL BE PLACED AT NORTH END OF BELLE-RIVE ON MAIN STREET.

MESSAGE BOARDS AT LOCATIONS 3 AND 4 SHALL BE PLACED ON EASTBOUND AND WESTBOUND LANES OF I-64 AS DIRECTED BY THE ENGINEER.

MODEL: Message Board Loc. [Sheet]
FILE NAME: c:\p\work\jeff\blufford\blufford117249\0978870-ShtS-DistrictS.dwg

USER NAME = Nathan.Taylor	DESIGNED -	REVISED -
	DRAWN -	REVISED -
	CHECKED -	REVISED -
PLOT DATE = 7/16/2025	DATE -	REVISED -

**STATE OF ILLINOIS
DEPARTMENT OF TRANSPORTATION**

**CHANGABLE MESSAGE BOARD
LOCATIONS**

SCALE: SHEET 7 OF 7 SHEETS STA. TO STA.

F.A.I RTE.	SECTION	COUNTY	TOTAL SHEETS	SHEET NO.
64	(41-9-1)PP-1	Jefferson	7	7
CONTRACT NO. 78B70				
ILLINOIS FED. AID PROJECT				