

09-19-2025 LETTING ITEM 065

FOR INDEX OF SHEETS, SEE SHEET NO. 2

TRAFFIC DATA

ROADWAY CLASSIFICATION: INTERSTATE
DESIGN SPEED = 75 MPH
CURRENT YEAR ADT (2022) = 23,300
DESIGN YEAR ADT (2042) = 31,300

TOWNSHIP

MOUND TOWNSHIP

COORDINATE SYSTEM: ILLINOIS STATE PLAN COORDINATE SYSTEM EAST ZONE (NAD 83)

POSTED SPEED: 70 MPH (I-70)

STATE OF ILLINOIS
DEPARTMENT OF TRANSPORTATION

**PROPOSED
HIGHWAY PLANS**

FAI ROUTE 70 (I-70)
SECTION (26-0,1)MED
NHPP-3TTM(926)
INTERSTATE CROSSOVER CONSTRUCTION
EFFINGHAM COUNTY

F.A.I. RTE.	SECTION	COUNTY	TOTAL SHEETS	SHEET NO.
70	(26-0,1)MED	EFFINGHAM	21	1
		ILLINOIS	CONTRACT NO. 74D57	

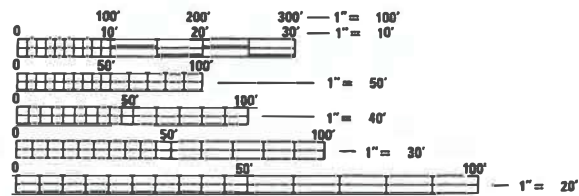
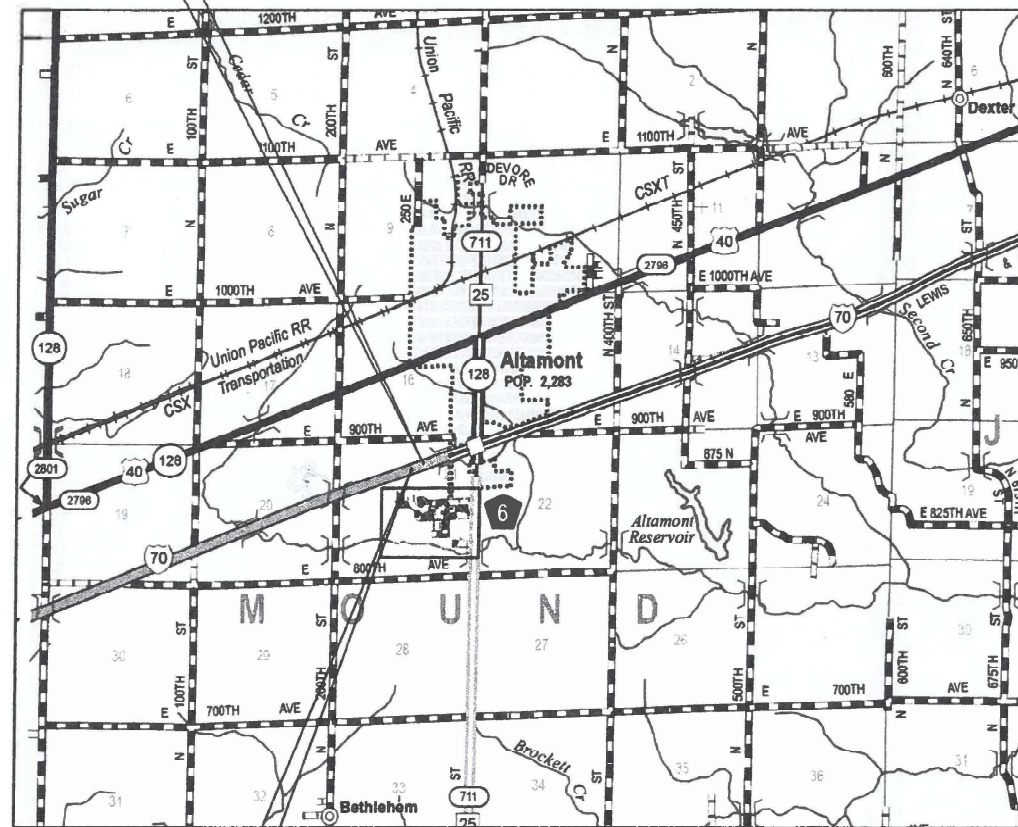
D-97-026-25



END IMPROVEMENTS
STA. 1462 + 00.00

C-97-057-25

TOWNSHIP 7N



FULL SIZE PLANS HAVE BEEN PREPARED USING STANDARD ENGINEERING SCALES. REDUCED SIZED PLANS WILL NOT CONFORM TO STANDARD SCALES. IN MAKING MEASUREMENTS ON REDUCED PLANS, THE ABOVE SCALES MAY BE USED.

J.U.L.I.E.
JOINT UTILITY LOCATION INFORMATION FOR EXCAVATION
1-800-892-0123
OR 811

PROJECT ENGINEER: BEN DETERS

BEGIN IMPROVEMENTS
STA. 1451 + 00.00

RANGE 4E
3rd PRINCIPAL MERIDIAN
GROSS LENGTH = 1,100.00 FT. = 0.208 MILE
NET LENGTH = 1,100.00 FT. = 0.208 MILE



SIGNATURE: *DR Macklin*
DATE SIGNED: 06/24/2025
LICENSE EXPIRATION DATE: 11/30/2025

STATE OF ILLINOIS
DEPARTMENT OF TRANSPORTATION

SUBMITTED JUNE 27 2025
Loan Rensing
REGIONAL ENGINEER

August 15 2025
See E.A. Etk
ENGINEER OF DESIGN AND ENVIRONMENT

August 15 2025
Grady
DIRECTOR OF HIGHWAYS PROJECT IMPLEMENTATION

PRINTED BY THE AUTHORITY
OF THE STATE OF ILLINOIS

CONTRACT NO. 74D57

REV - MS

INDEX OF SHEETS

- 1 COVER SHEET
- 2 GENERAL NOTES, HIGHWAY STANDARDS, & INDEX OF SHEETS
- 3 SUMMARY OF QUANTITIES
- 4 PROPOSED TYPICAL CROSS SECTIONS
- 5 SCHEDULES OF QUANTITIES
- 6-8 ALIGNMENT
- 9 MEDIAN CROSSOVER PLAN AND PROFILE
- 10 MEDIAN CROSSOVER ELEVATION TABLE
- 11-14 MAINTENANCE OF TRAFFIC
- 15-21 CROSS SECTIONS

HIGHWAY STANDARDS

- 000001-08 STANDARD SYMBOLS, ABBREVIATIONS AND PATTERNS
- 001001-02 AREAS OF REINFORCEMENT BARS
- 001006 DECIMAL OF AN INCH AND OF A FOOT
- 280001-07 TEMPORARY EROSION CONTROL SYSTEMS
- 420001-10 PAVEMENT JOINTS
- 420701-03 PAVEMENT WELDED WIRE REINFORCEMENT
- 542306-03 PRECAST REINFORCED CONCRETE ELLIPTICAL FLARED END SECTION
- 601001-05 PIPE UNDERDRAINS
- 602301-04 INLET, TYPE A
- 602411-09 PRECAST MANHOLE, TYPE A, 7' (2.13 M) DIAMETER
- 602416-09 PRECAST MANHOLE, TYPE A, 8' (2.44 M) DIAMETER
- 602601-06 PRECAST REINFORCED CONCRETE FLAT SLAB TOP
- 602701-02 MANHOLE STEPS
- 604001-05 FRAME AND LIDS, TYPE 1
- 604036-03 GRATE, TYPE 8
- 701101-05 OFF-ROAD OPERATIONS, MULTILANE, 15' (4.5 M) TO 24" (600 MM) FROM PAVEMENT EDGE
- 701106-02 OFF-ROAD OPERATIONS, MULTILANE, MORE THAN 15' (4.5 M) AWAY
- 701400-12 APPROACH TO LANE CLOSURE, FREEWAY/EXPRESSWAY
- 701401-13 LANE CLOSURE, FREEWAY/EXPRESSWAY
- 701411-09 LANE CLOSURE, MULTILANE, AT ENTRANCE OR EXIT RAMP, FOR SPEEDS > 45 MPH
- 701428-01 TRAFFIC CONTROL, SETUP AND REMOVAL, FREEWAY/EXPRESSWAY
- 701901-10 TRAFFIC CONTROL DEVICES

GENERAL NOTES

- 1. ALL ELEVATIONS REFER TO THE NAVD88 VERTICAL DATUM UNLESS OTHERWISE NOTED.
- 2. GRATE ELEVATIONS ARE TO THE FLOW LINE OF THE PROPOSED GRATE OR LID.
- 3. THE MATERIAL FOR AGGREGATE BASE COURSE, TYPE B SHALL BE CRUSHED STONE OR CRUSHED CONCRETE.

APPLICATION RATES

AGGREGATE BASE COURSE, TY B

2.05 TONS/CU YD

MODEL: E:\C\EN70 - GenNade1 [Sheet]
 FILE NAME: C:\Users\mact\Desktop\70 - Crosssect\CADD files\0774893-ah1\GenNade_Crosssect.dgn

REV - MS

	USER NAME = mackl	DESIGNED - \$gende\$	REVISED -	STATE OF ILLINOIS DEPARTMENT OF TRANSPORTATION	FAI ROUTE 70 - INTERSTATE 70 INDEX OF SHEETS, GENERAL NOTES, AND STANDARDS			F.A.I. RTE.	SECTION	COUNTY	TOTAL SHEETS	SHEET NO.
	PLOT SCALE = 0.16666633' / in.	DRAWN - \$gendr\$	REVISED -		70	(26-0,1)MED	EFFINGHAM	21	2			
PLOT DATE = 6/17/2025	CHECKED - \$gench\$	REVISED -	SCALE: SHEET 1 OF 1 SHEETS STA. TO STA.			CONTRACT NO. 74D57						
	DATE - \$submitdate\$	REVISED -	ILLINOIS FED. AID PROJECT									

CODE NO.	ITEM	UNIT	TOTAL QUANTITY	CONSTR. CODE	
				FAI 70 - EFFINGHAM COUNTY	
				FUNDING: 90% FEDERAL; 10% STATE	
				ROADWAY	
				0001	RURAL
20200100	EARTH EXCAVATION	CU YD	570		570
28000500	INLET AND PIPE PROTECTION	EACH	3		3
35101400	AGGREGATE BASE COURSE, TYPE B	TON	5228		5228
42000060	WELDED WIRE REINFORCEMENT	SQ YD	3129		3129
42000510	PORTLAND CEMENT CONCRETE PAVEMENT 10 1/2"	SQ YD	3129		3129
44004250	PAVED SHOULDER REMOVAL	SQ YD	1467		1467
542A0220	PIPE CULVERTS, CLASS A, TYPE 1 15"	FOOT	34		34
542A5479	PIPE CULVERTS, CLASS A, TYPE 1 EQUIVALENT ROUND-SIZE 24"	FOOT	640		640
54214509	PRECAST REINFORCED CONCRETE FLARED END SECTIONS, EQUIVALENT ROUND-SIZE 24"	EACH	2		2
60108200	PIPE UNDERDRAINS, 6" (SPECIAL)	FOOT	75		75
60224445	MANHOLES, TYPE A, 7'-DIAMETER, TYPE 1 FRAME, OPEN LID	EACH	1		1
60224457	MANHOLES, TYPE A, 8'-DIAMETER, TYPE 1 FRAME, OPEN LID	EACH	1		1
60236200	INLETS, TYPE A, TYPE 8 GRATE	EACH	2		2
67100100	MOBILIZATION	L SUM	1		1
70100205	TRAFFIC CONTROL AND PROTECTION, STANDARD 701401	EACH	2		2

CODE NO.	ITEM	UNIT	TOTAL QUANTITY	CONSTR. CODE	
				FAI 70 - EFFINGHAM COUNTY	
				FUNDING: 90% FEDERAL; 10% STATE	
				ROADWAY	
				0001	RURAL
70100420	TRAFFIC CONTROL AND PROTECTION, STANDARD 701411	EACH	2		2
70107007	PAVEMENT MARKING BLACKOUT TAPE, 7"	FOOT	500		500
70107025	CHANGEABLE MESSAGE SIGN	CAL DA	56		56
70300150	SHORT TERM PAVEMENT MARKING REMOVAL	SQ FT	2225		2225
70307120	TEMPORARY PAVEMENT MARKING - LINE 4" - TYPE IV TAPE	FOOT	5800		5800
X2600002	RECOVERABLE DELINEATORS	EACH	36		36
X6015000	REMOVE CONCRETE HEADWALLS FOR PIPE DRAINS	EACH	2		2

MODEL: E:\PROJECTS\70 - Greenfield\70.dwg
 FILE NAME: C:\Users\mack\Documents\70\Consent\CADD\ItemD774893-SCD_Consent.dgn



USER NAME = mack1	DESIGNED -	REVISED -
PLOT SCALE = 0.16666633' / in.	DRAWN -	REVISED -
PLOT DATE = 6/24/2025	CHECKED -	REVISED -
	DATE -	REVISED -

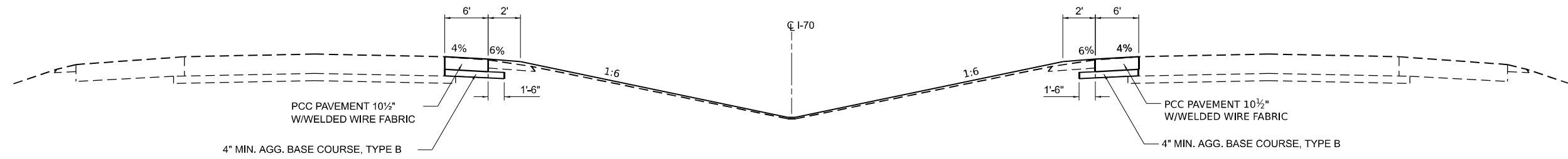
STATE OF ILLINOIS
DEPARTMENT OF TRANSPORTATION

FAI ROUTE 70 - INTERSTATE 70
SUMMARY OF QUANTITIES

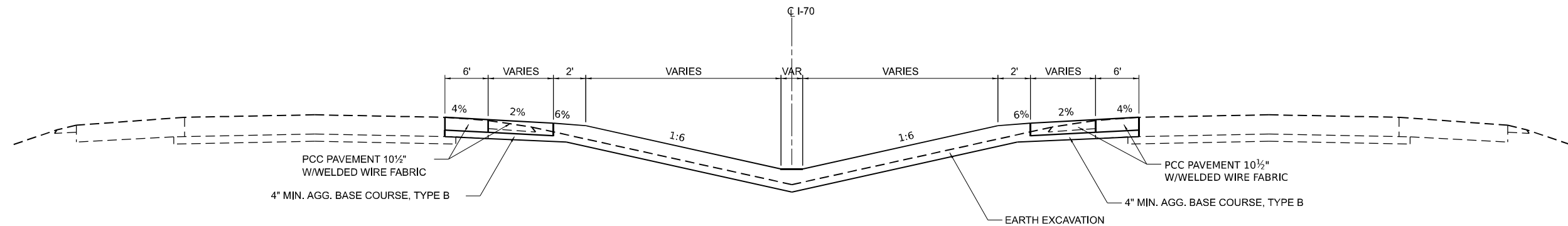
SCALE: SHEET OF SHEETS STA. TO STA.

F.A.I. RTE.	SECTION	COUNTY	TOTAL SHEETS	SHEET NO.
70	(26-0,1)MED	EFFINGHAM	21	3
ILLINOIS FED. AID PROJECT			CONTRACT NO. 74D57	

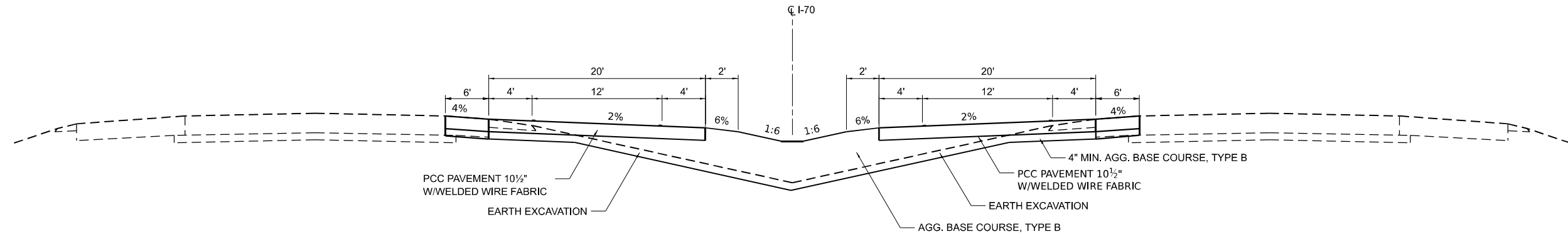
REV - MS



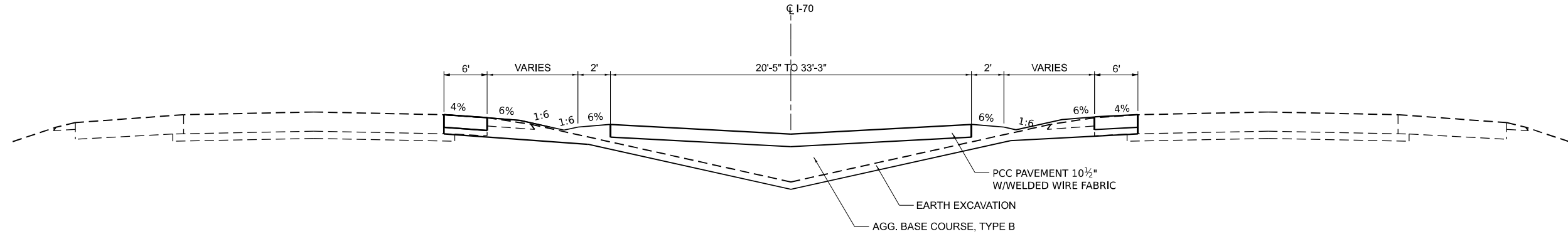
MEDIAN CROSSOVER TYPICAL SECTION



MEDIAN CROSSOVER TYPICAL SECTION



MEDIAN CROSSOVER TYPICAL SECTION



MEDIAN CROSSOVER TYPICAL SECTION

MODEL: S:\proj\70\typical\sheet.dwg
 FILE NAME: C:\Users\mackl\Desktop\70_Crossover\CADD_Files\CrossoverTypical.dwg



USER NAME = mackl	DESIGNED -	REVISED -
	DRAWN -	REVISED -
PLOT SCALE = 0.1667' / 1"	CHECKED -	REVISED -
PLOT DATE = 6/17/2025	DATE -	REVISED -

STATE OF ILLINOIS
DEPARTMENT OF TRANSPORTATION

FAI ROUTE 70 - INTERSTATE 70
PROPOSED TYPICAL SECTIONS

F.A.I. RTE.	SECTION	COUNTY	TOTAL SHEETS	SHEET NO.
70	(26-0,1)MED	EFFINGHAM	21	4
CONTRACT NO. 74D57				

SCALE: SHEET OF SHEETS STA. TO STA.

ILLINOIS FED. AID PROJECT

DRAINAGE

STATION	PIPE CULVERTS, CLASS A, TYPE 1, EQUIVALENT ROUND SIZE 24"	PIPE CULVERTS, CLASS A, TYPE 1, 15"	INLETS, TYPE A, TYPE 8 FRAME AND GRATE	MANHOLES, TYPE A, 8' DIAMETER, TYPE 1 FRAME AND GRATE	MANHOLES, TYPE A, 7' DIAMETER, TYPE 1 GRATE	PRC FLARED END SECTIONS, EQUIVALENT ROUND SIZE 24"	INLET AND PIPE PROTECTION	REMOVE CONCRETE HEADWALLS FOR PIPE DRAINS	PIPE UNDERDRAINS, 6" (SPL)
	FOOT	FOOT	EACH	EACH	EACH	EACH	EACH	EACH	FOOT
STA. 1453+40 TO STA. 1455+75	235.0	34.0	2	1	--	1	2	--	--
LT STA. 1455+95.4	--	--	--	--	--	--	--	1	--
STA. 1455+75 TO STA. 1457+50	175.0	--	--	--	1	--	--	--	75.0
RT STA. 1456+10.8	--	--	--	--	--	--	--	1	--
STA. 1457+50 TO STA. 1459+98	230.0	--	--	--	--	1	1	--	--
TOTALS =	640.0	34.0	2	1	1	2	3	2	75

PAVEMENT

STATION	WELDED WIRE REINFORCEMENT	PORTLAND CEMENT CONCRETE PAVEMENT 10 1/2"
	SQ YD	SQ YD
STA. 1451+00 TO STA. 1462+00	3129.0	3129.0
TOTALS =	3129.0	3129.0

TEMPORARY PAVEMENT MARKING

STATION	TEMPORARY PAVEMENT MARKING LINE 4" - TYPE IV TAPE	PAVEMENT MARKING BLACKOUT TAPE - 7"
	FOOT	FOOT
	YELLOW	
EB STA. 1438+00 TO STA. 1448+00	1000	250
EB STA. 1448+00 TO STA. 1462+00	1400	--
WB STA. 1451+00 TO STA. 1534+15	2400	--
WB STA. 1534+15 TO STA. 1544+15	1000	250
TOTALS =	5800	500

MODEL: E:\PROJECTS\70 - Schedule (8Sheet)
 FILE NAME: C:\Users\mck1\Documents\70 - Schedule\CADD files\70 - Schedule - Crossover.dgn

REV - MS



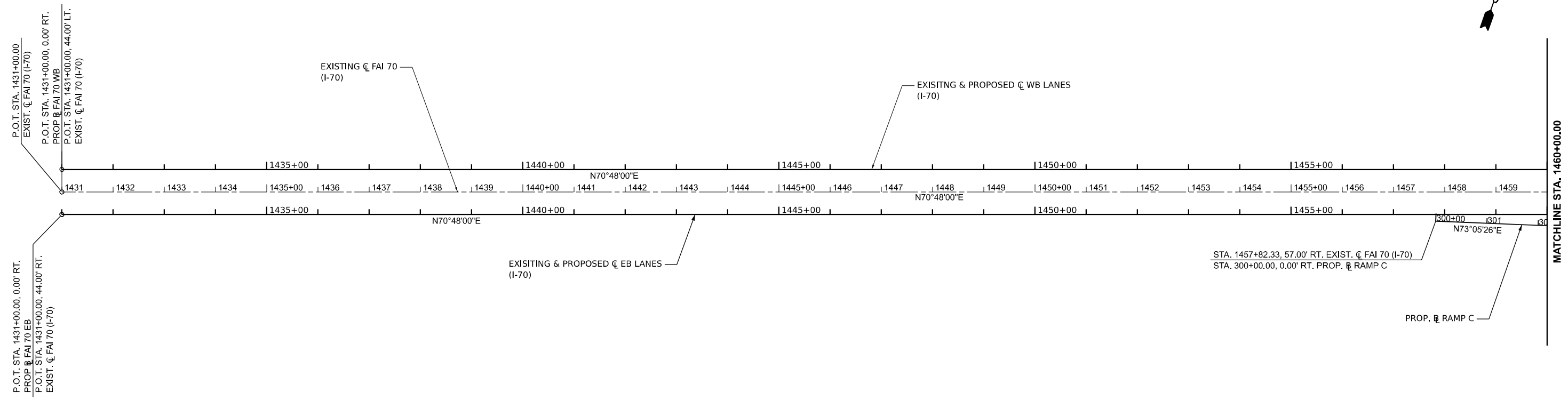
USER NAME = mck1	DESIGNED -	REVISED -
	DRAWN -	REVISED -
PLOT SCALE = 0.16666633 1/16 in.	CHECKED -	REVISED -
PLOT DATE = 6/17/2025	DATE -	REVISED -

**STATE OF ILLINOIS
DEPARTMENT OF TRANSPORTATION**

**FAI ROUTE 70 - INTERSTATE 70
SCHEDULE OF QUANTITIES**

SCALE: SHEET OF SHEETS STA. TO STA.

F.A.I RTE.	SECTION	COUNTY	TOTAL SHEETS	SHEET NO.
70	(26-0,IMED	EFFINGHAM	21	5
CONTRACT NO. 74D57				
ILLINOIS FED. AID PROJECT				



COORDINATES FOR TIE POINTS

P.O.T. STA. 1431+00.00
 N: 864465.757
 E: 862165.922

P.O.T. STA. 1462+62.48 (BK) =
 STA. 1521+77.25 AH
 N: 865505.792
 E: 865152.496

P.O.T. STA. 1600+00.00
 N: 868078.434
 E: 872540.116

MODEL: E:\CL\I70 - Plan 01 (Sheet)
 FILE NAME: C:\Users\mac1\Documents\I70 Crossover\CADD Files\DT74832-sheet1-TB-170.dgn



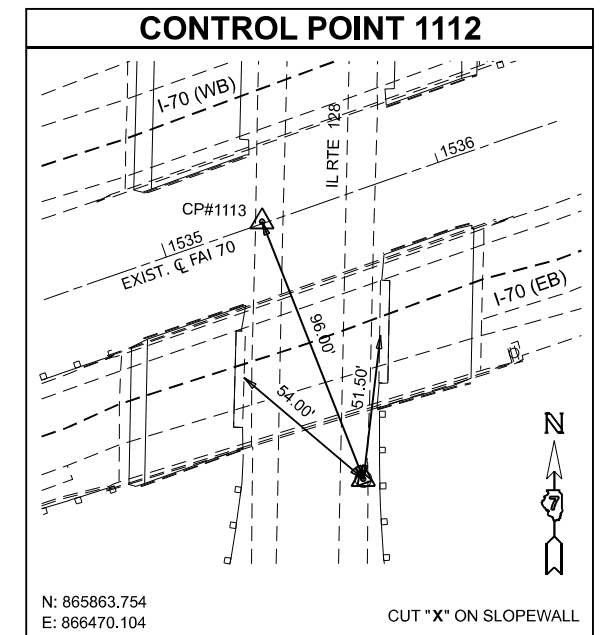
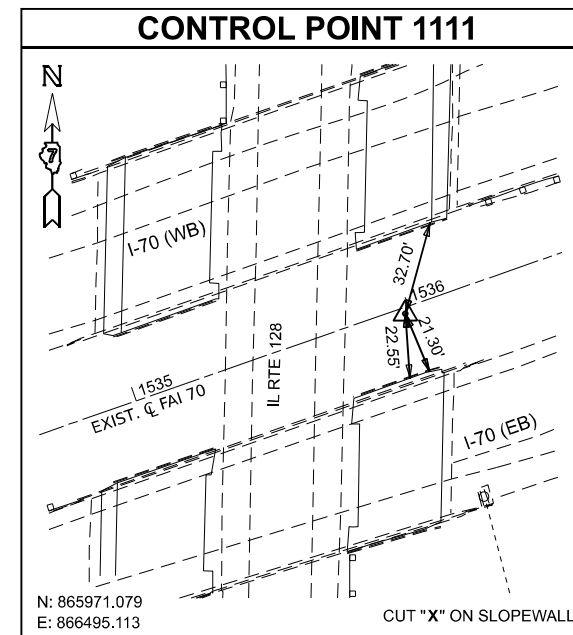
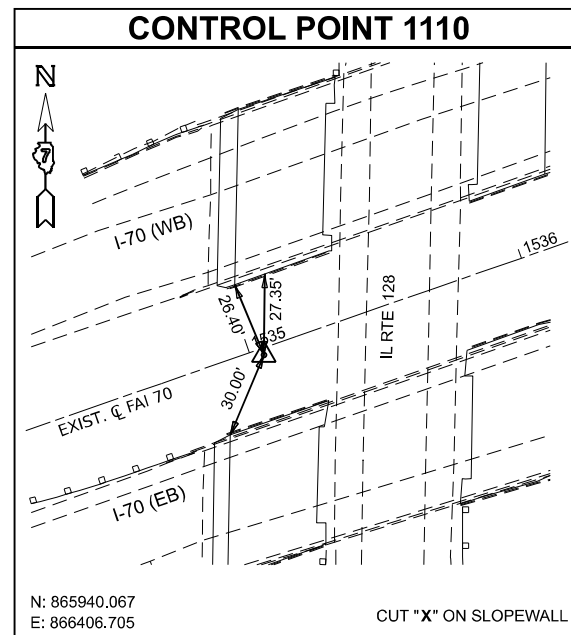
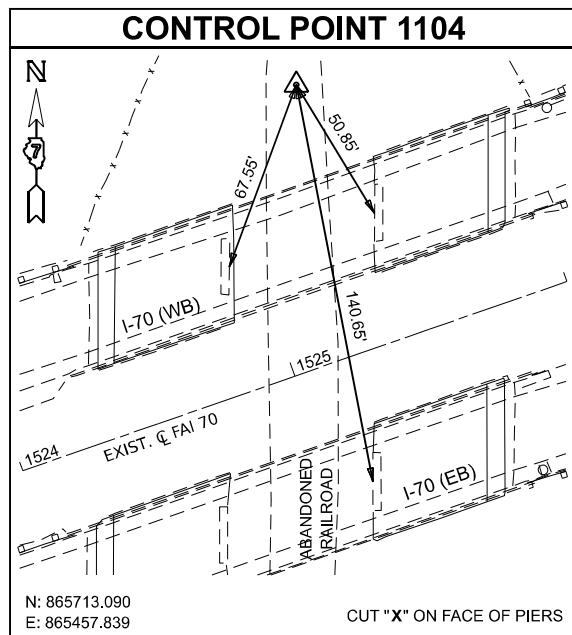
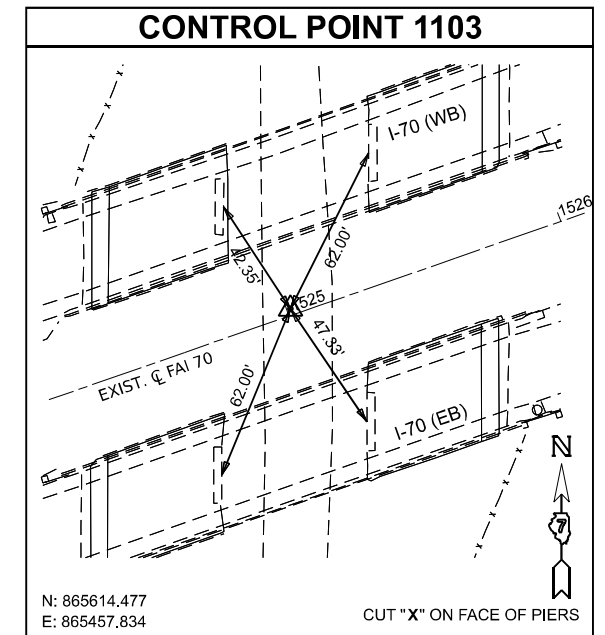
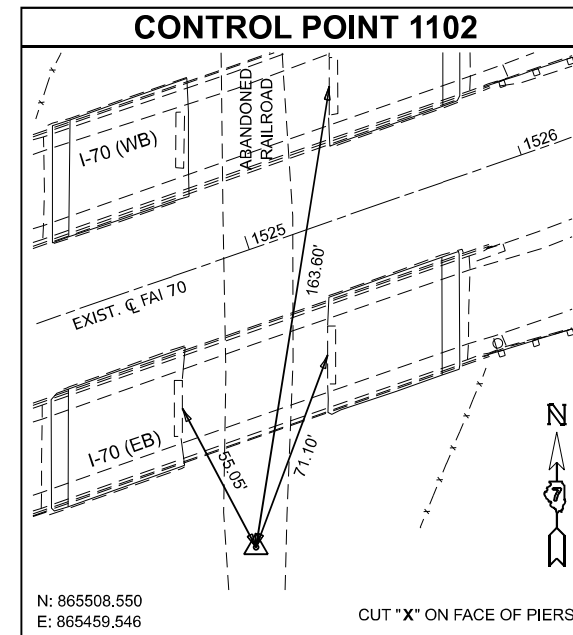
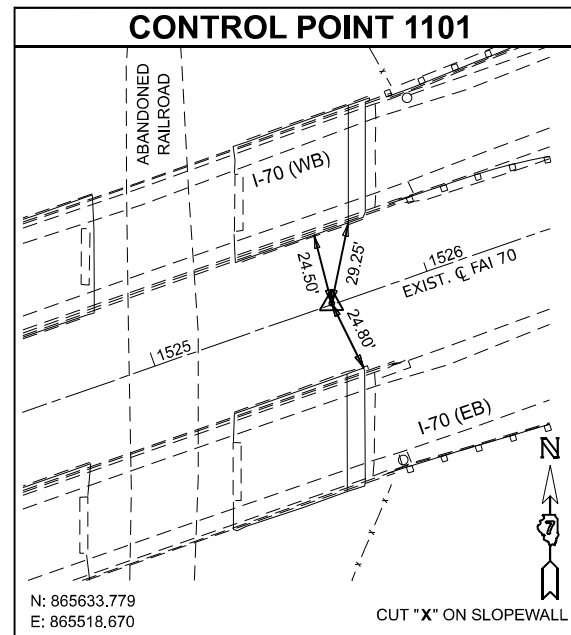
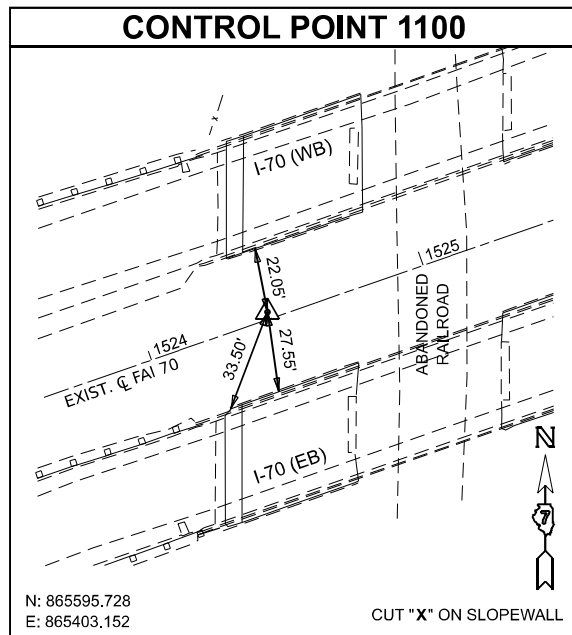
USER NAME = mac1	DESIGNED - \$atbde\$	REVISED -
DRAWN - \$atbdr\$	CHECKED - \$atbch\$	REVISED -
PLOT SCALE = 0.16666633 / in.	DATE - \$submitdate\$	REVISED -
PLOT DATE = 6/9/2025		

**STATE OF ILLINOIS
 DEPARTMENT OF TRANSPORTATION**

**FAI ROUTE 70 - INTERSTATE 70
 ALIGNMENT, TIES & BENCHMARKS - I 70**

SCALE: 1" = 100' SHEET 1 OF 3 SHEETS STA. 1431+00 TO STA. 1460+00

F.A.I. RTE.	SECTION	COUNTY	TOTAL SHEETS	SHEET NO.
70	(26-0.1)MED	EFFINGHAM	21	6
CONTRACT NO. 74D57				
ILLINOIS FED. AID PROJECT				



NOTE: ALL CONTROL POINTS ARE IRON PINS WITH YELLOW CAPS

MODEL: Title Sheet
FILE NAME: C:\Users\mac4\Desktop\I70_Crossover\CADD_Bldg\074892\sheet\I70.dwg



USER NAME = mac4	DESIGNED - \$atbde\$	REVISED -
DRAWN - \$atbdr\$	REVISIONS -	
PLOT SCALE = 0.16666667 / in.	CHECKED - \$atbch\$	REVISIONS -
PLOT DATE = 6/9/2025	DATE - \$submitdate\$	REVISIONS -

**STATE OF ILLINOIS
DEPARTMENT OF TRANSPORTATION**

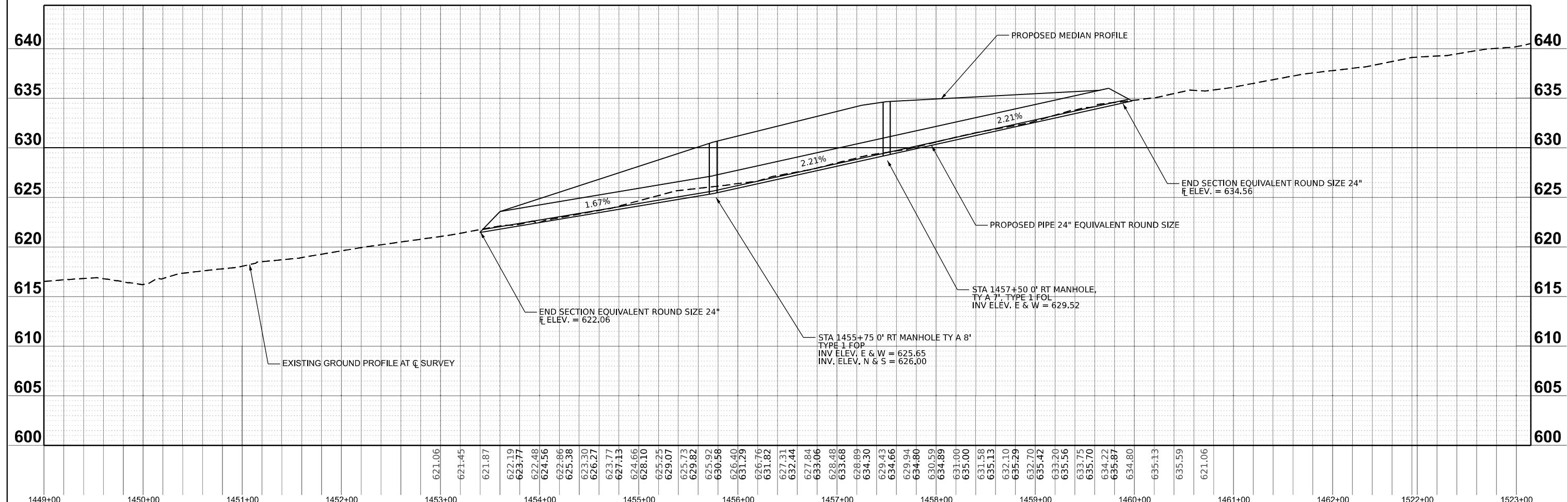
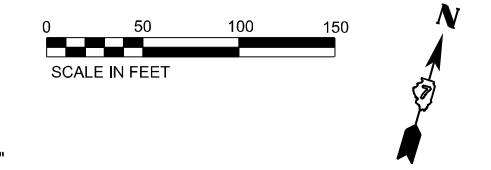
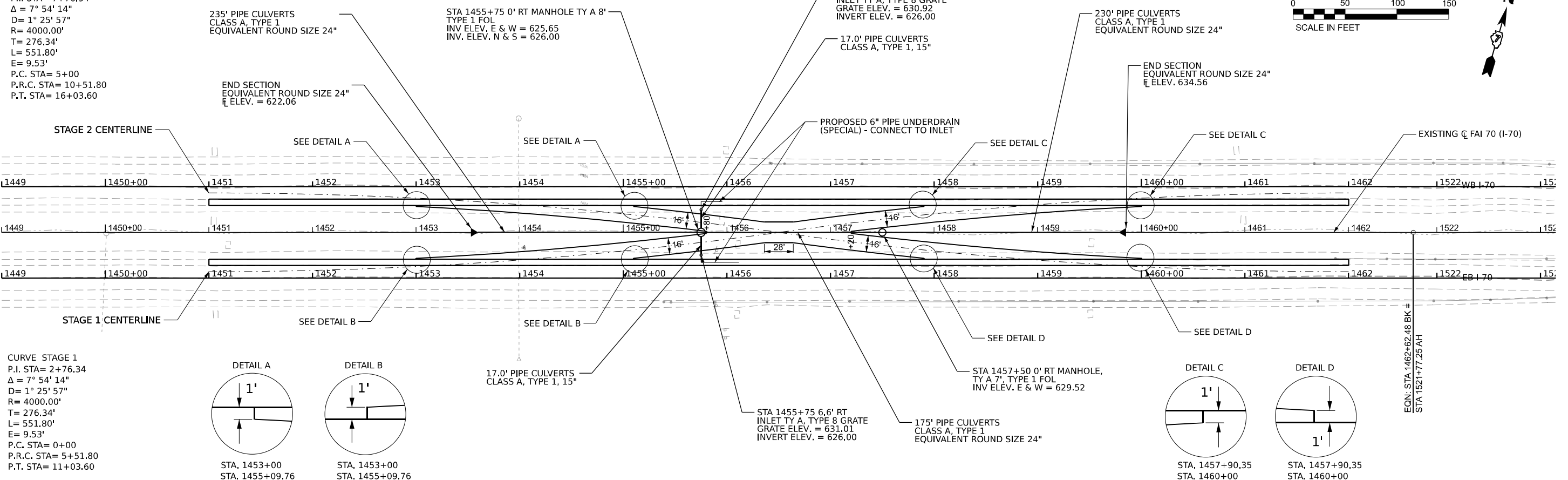
FAI ROUTE 70 - INTERSTATE 70
ALIGNMENT, TIES AND BENCHMARKS - I 70

SCALE: SHEET 2 OF 3 SHEETS STA. TO STA.

FAI RTE.	SECTION	COUNTY	TOTAL SHEETS	SHEET NO.
70	(26-0.1)MED	EFFINGHAM	21	7
CONTRACT NO. 74D57				
ILLINOIS FED. AID PROJECT				

CURVE STAGE 2
 P.I. STA= 7+76.34
 $\Delta = 7^\circ 54' 14''$
 $D = 1^\circ 25' 57''$
 $R = 4000.00'$
 $T = 276.34'$
 $L = 551.80'$
 $E = 9.53'$
 P.C. STA= 5+00
 P.R.C. STA= 10+51.80
 P.T. STA= 16+03.60

CURVE STAGE 1
 P.I. STA= 2+76.34
 $\Delta = 7^\circ 54' 14''$
 $D = 1^\circ 25' 57''$
 $R = 4000.00'$
 $T = 276.34'$
 $L = 551.80'$
 $E = 9.53'$
 P.C. STA= 0+00
 P.R.C. STA= 5+51.80
 P.T. STA= 11+03.60



1449+00	1450+00	1451+00	1452+00	1453+00	1454+00	1455+00	1456+00	1457+00	1458+00	1459+00	1460+00	1461+00	1462+00	1522+00	1523+00																																													
				621.06	621.45	621.87	622.19	623.77	622.48	624.56	622.66	625.38	623.30	626.27	623.77	627.13	624.66	628.10	625.25	629.07	625.73	629.82	625.92	630.58	626.40	631.29	626.76	631.82	627.31	632.44	627.84	633.06	628.48	633.68	628.89	634.30	629.43	634.66	629.94	634.80	630.59	634.89	631.00	635.00	631.58	635.13	632.10	635.29	632.70	635.42	633.20	635.56	633.75	635.70	634.22	635.87	634.80	635.13	635.59	621.06



USER NAME = mackl	DESIGNED - DRM	REVISIED -
PLOT SCALE = 0.16666633' / in.	DRAWN - DRM	REVISIED -
PLOT DATE = 6/17/2025	CHECKED - CS	REVISIED -
	DATE - 01/31/2025	REVISIED -

**STATE OF ILLINOIS
 DEPARTMENT OF TRANSPORTATION**

**FAI ROUTE 70 - INTERSTATE 70
 MEDIAN CROSSOVER - PLAN AND PROFILE**

SCALE: 1"=50' SHEET OF SHEETS STA. TO STA.

F.A. RTE.	SECTION	COUNTY	TOTAL SHEETS	SHEET NO.
70	(26-0)MED	EFFINGHAM	21	9
CONTRACT NO. 74D57				
ILLINOIS FED. AID PROJECT				

CROSSOVER OFFSET & ELEVATION TABLE

C.L. STATION I-70	STAGE 1 C.L. OFFSET (FT)	STAGE 2 C.L. OFFSET (FT)	E.O.P. LEFT OF C.L.		E.O.P. LEFT OF C.L.		BREAK POINT LEFT		E.O.P. RIGHT OF C.L.		E.O.P. RIGHT OF C.L.		BREAK POINT RIGHT	
			OFFSET (FT)	ELEV.	OFFSET (FT)	ELEV.	OFFSET (FT)	ELEV.	OFFSET (FT)	ELEV.	OFFSET (FT)	ELEV.	OFFSET (FT)	ELEV.
1451+00	38.00	-38.00	--	--	--	--	--	--	--	--	--	--	--	--
1451+25	37.92	-37.92	--	--	--	--	--	--	--	--	--	--	--	--
1451+50	37.69	-37.69	--	--	--	--	--	--	--	--	--	--	--	--
1451+75	37.30	-37.30	--	--	--	--	--	--	--	--	--	--	--	--
1452+00	36.75	-36.75	--	--	--	--	--	--	--	--	--	--	--	--
1452+25	36.05	-36.05	--	--	--	--	--	--	--	--	--	--	--	--
1452+50	35.19	-35.19	--	--	--	--	--	--	--	--	--	--	--	--
1452+75	34.17	-34.17	--	--	--	--	--	--	--	--	--	--	--	--
1453+00	33.00	-33.00	-24.98	625.35	--	--	-26.00	625.37	24.98	625.92	--	--	26.00	625.94
1453+25	31.67	-31.67	-23.65	625.70	--	--	-26.00	625.75	23.65	626.30	--	--	26.00	626.35
1453+50	30.48	-30.48	-22.16	626.05	--	--	-26.00	626.13	22.16	626.68	--	--	26.00	626.76
1453+75	28.54	-28.54	-20.51	626.47	--	--	-26.00	626.58	20.51	627.13	--	--	26.00	627.24
1454+00	26.73	-26.73	-18.71	626.96	--	--	-26.00	627.11	18.71	627.63	--	--	26.00	627.78
1454+25	24.78	-24.78	-16.74	627.45	--	--	-26.00	627.64	16.74	628.13	--	--	26.00	628.32
1454+50	22.66	-22.66	-14.62	627.94	--	--	-26.00	628.17	14.62	628.64	--	--	26.00	628.87
1454+75	20.38	-20.38	-12.34	628.52	--	--	-26.00	628.79	12.34	629.09	--	--	26.00	629.36
1455+00	17.95	-17.95	-9.90	629.06	-25.98	629.38	--	--	9.90	629.64	25.98	629.96	--	--
1455+25	15.36	-15.36	-7.31	629.63	-23.40	629.95	--	--	7.31	630.19	23.40	630.51	--	--
1455+50	12.61	-12.61	-4.55	630.57	-20.65	630.25	--	--	4.55	630.51	20.65	630.84	--	--
1455+75	9.70	-9.70	-1.63	631.17	-17.75	630.85	--	--	1.63	630.85	17.75	631.17	--	--
1456+00	6.63	-6.63	--	--	-14.68	631.58	0.00	631.29	--	--	14.68	631.58	--	--
1456+25	3.40	-3.40	--	--	-11.46	632.05	0.00	631.82	--	--	11.46	632.05	--	--
1456+50	0.00	0.00	--	--	-10.00	632.64	0.00	632.44	--	--	10.00	632.64	--	--
1456+75	-3.38	3.38	--	--	-11.46	633.29	0.00	633.06	--	--	11.46	633.29	--	--
1457+00	-6.61	6.61	--	--	-14.68	633.97	0.00	633.68	--	--	14.68	633.97	--	--
1457+25	-9.69	9.69	-1.63	634.40	-17.75	634.72	--	--	1.63	634.40	17.75	634.72	--	--
1457+50	-12.60	12.60	-4.55	634.95	-20.65	635.27	--	--	4.55	635.17	20.65	635.49	--	--
1457+75	-15.35	15.35	-7.31	635.40	-23.40	635.72	--	--	7.31	635.84	23.40	636.16	--	--
1458+00	-17.94	17.94	-9.90	635.94	-25.98	636.26	--	--	9.90	636.39	25.98	636.71	26.00	636.71
1458+25	-20.37	20.37	-12.34	636.48	--	--	-26.00	636.75	12.34	636.93	--	--	26.00	637.20
1458+50	-22.65	22.65	-14.62	637.00	--	--	-26.00	637.23	14.62	637.42	--	--	26.00	637.65
1458+75	-24.77	24.77	-16.74	637.48	--	--	-26.00	637.67	16.74	637.58	--	--	26.00	637.77
1459+00	-26.73	26.73	-18.71	637.97	--	--	-26.00	638.12	18.71	638.33	--	--	26.00	638.48
1459+25	-28.53	28.53	-20.51	638.46	--	--	-26.00	638.57	20.51	638.77	--	--	26.00	638.88
1459+50	-30.17	30.17	-22.16	638.85	--	--	-26.00	638.93	22.16	639.22	--	--	26.00	639.30
1459+75	-31.66	31.66	-23.65	639.24	--	--	-26.00	639.29	23.65	639.61	--	--	26.00	639.66
1460+00	-32.99	32.99	-24.98	639.63	--	--	-26.00	639.65	24.98	639.99	--	--	26.00	640.01
1460+25	-34.17	34.17	--	--	--	--	--	--	--	--	--	--	--	--
1460+50	-35.18	35.18	--	--	--	--	--	--	--	--	--	--	--	--
1460+75	-36.04	36.04	--	--	--	--	--	--	--	--	--	--	--	--
1461+00	-36.75	36.75	--	--	--	--	--	--	--	--	--	--	--	--
1461+25	-37.30	37.30	--	--	--	--	--	--	--	--	--	--	--	--
1461+50	-37.69	37.69	--	--	--	--	--	--	--	--	--	--	--	--
1461+75	-37.92	37.92	--	--	--	--	--	--	--	--	--	--	--	--
1462+00	-38.00	38.00	--	--	--	--	--	--	--	--	--	--	--	--



USER NAME = mackl	DESIGNED -	REVISED -
	DRAWN -	REVISED -
PLOT SCALE = 0.16666633' / 1"	CHECKED -	REVISED -
PLOT DATE = 6/17/2025	DATE -	REVISED -











**STATE OF ILLINOIS
DEPARTMENT OF TRANSPORTATION**

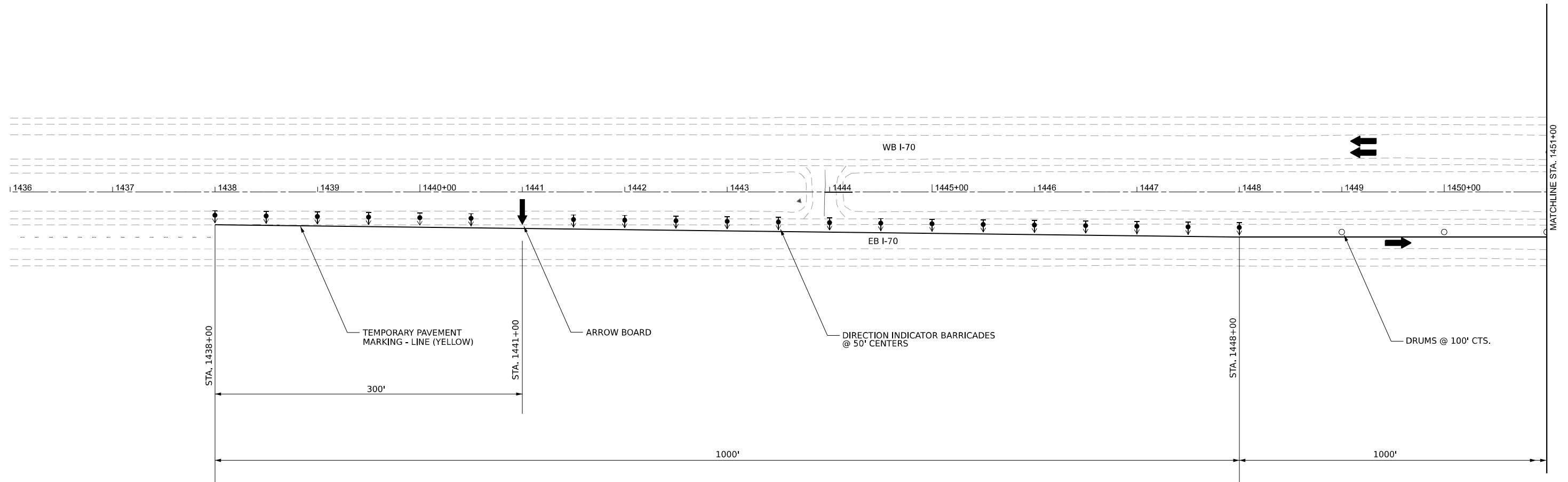
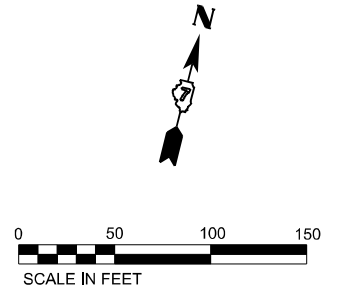
**FAI ROUTE 70 - INTERSTATE 70
CROSSOVER GEOMETRIC DETAIL**

SCALE: SHEET OF SHEETS STA. TO STA.

F.A.I RTE.	SECTION	COUNTY	TOTAL SHEETS	SHEET NO.
70	(26-0,1)MED	EFFINGHAM	21	10
			CONTRACT NO. 74D57	
ILLINOIS FED. AID PROJECT				

LEGEND

-  ARROW BOARD
-  WORK AREA
-  DIRECTION INDICATOR BARRICADE WITH STEADY BURN MONODIRECTIONAL LIGHT
-  TYPE II BARRICADE WITH STEADY BURN MONODIRECTIONAL LIGHT
-  DRUM WITH STEADY BURN MONODIRECTIONAL LIGHT
-  VERTICAL PANEL
-  TYPE III BARRICADE WITH FLASHING LIGHTS
-  TEMPORARY CONCRETE BARRIER
-  DRUM
-  IMPACT ATTENUATOR



SUGGESTED SEQUENCE OF OPERATIONS:

1. PLACE EMBANKMENT AND INSTALL DRAINAGE ITEMS.
2. REMOVE AND REPLACE SHOULDERS AS SHOWN ON PLAN SHEETS.
3. CONSTRUCT MEDIAN CROSSOVER.

NOTE:
SEE HIGHWAY STANDARDS 701400 AND 701401
FOR LANE CLOSURE DETAILS INCLUDING
BARRICADES, SIGNS, REFLECTORS, ARROW BOARDS,
AND TEMPORARY PAVEMENT MARKINGS.



USER NAME = mackl	DESIGNED - DRM	REVISED -
	DRAWN - DRM	REVISED -
PLOT SCALE = 0.16666633' / in.	CHECKED - CS	REVISED -
PLOT DATE = 6/17/2025	DATE - 01/31/2025	REVISED -

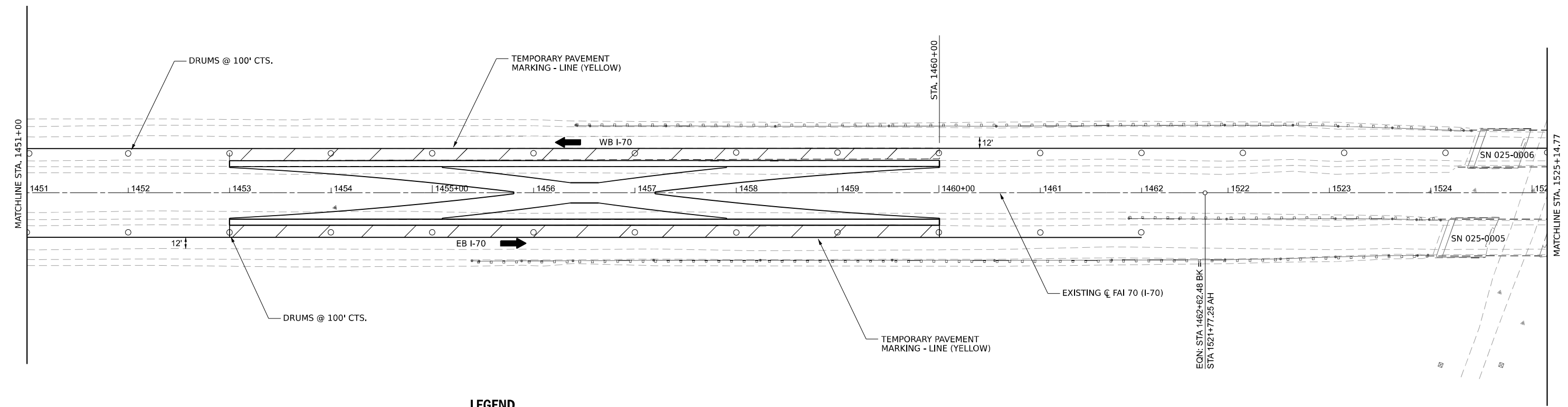
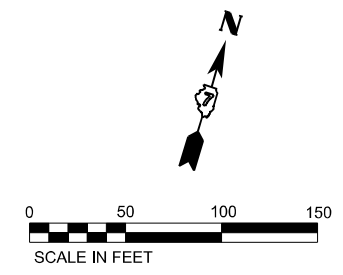
STATE OF ILLINOIS
DEPARTMENT OF TRANSPORTATION

FAI ROUTE 70 - INTERSTATE 70
MAINTENANCE OF TRAFFIC






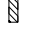




SCALE: 1"=50' SHEET 1 OF 4 SHEETS STA. TO STA.

F.A.I. RTE.	SECTION	COUNTY	TOTAL SHEETS	SHEET NO.
70	(26-0,1)MED	EFFINGHAM	21	II
CONTRACT NO. 74D57				

ILLINOIS FED. AID PROJECT



LEGEND

-  ARROW BOARD
-  WORK AREA
-  DIRECTION INDICATOR BARRICADE WITH STEADY BURN MONODIRECTIONAL LIGHT
-  TYPE II BARRICADE WITH STEADY BURN MONODIRECTIONAL LIGHT
-  DRUM WITH STEADY BURN MONODIRECTIONAL LIGHT
-  VERTICAL PANEL
-  TYPE III BARRICADE WITH FLASHING LIGHTS
-  TEMPORARY CONCRETE BARRIER
-  DRUM
-  IMPACT ATTENUATOR

NOTE:
SEE HIGHWAY STANDARDS 701400 AND 701401
FOR LANE CLOSURE DETAILS INCLUDING
BARRICADES, SIGNS, REFLECTORS, ARROW BOARDS,
AND TEMPORARY PAVEMENT MARKINGS.



USER NAME = mackl	DESIGNED - DRM	REVISED -
PLOT SCALE = 0.16666633' / in.	DRAWN - DRM	REVISED -
PLOT DATE = 6/17/2025	CHECKED - CS	REVISED -
	DATE - 01/31/2025	REVISED -

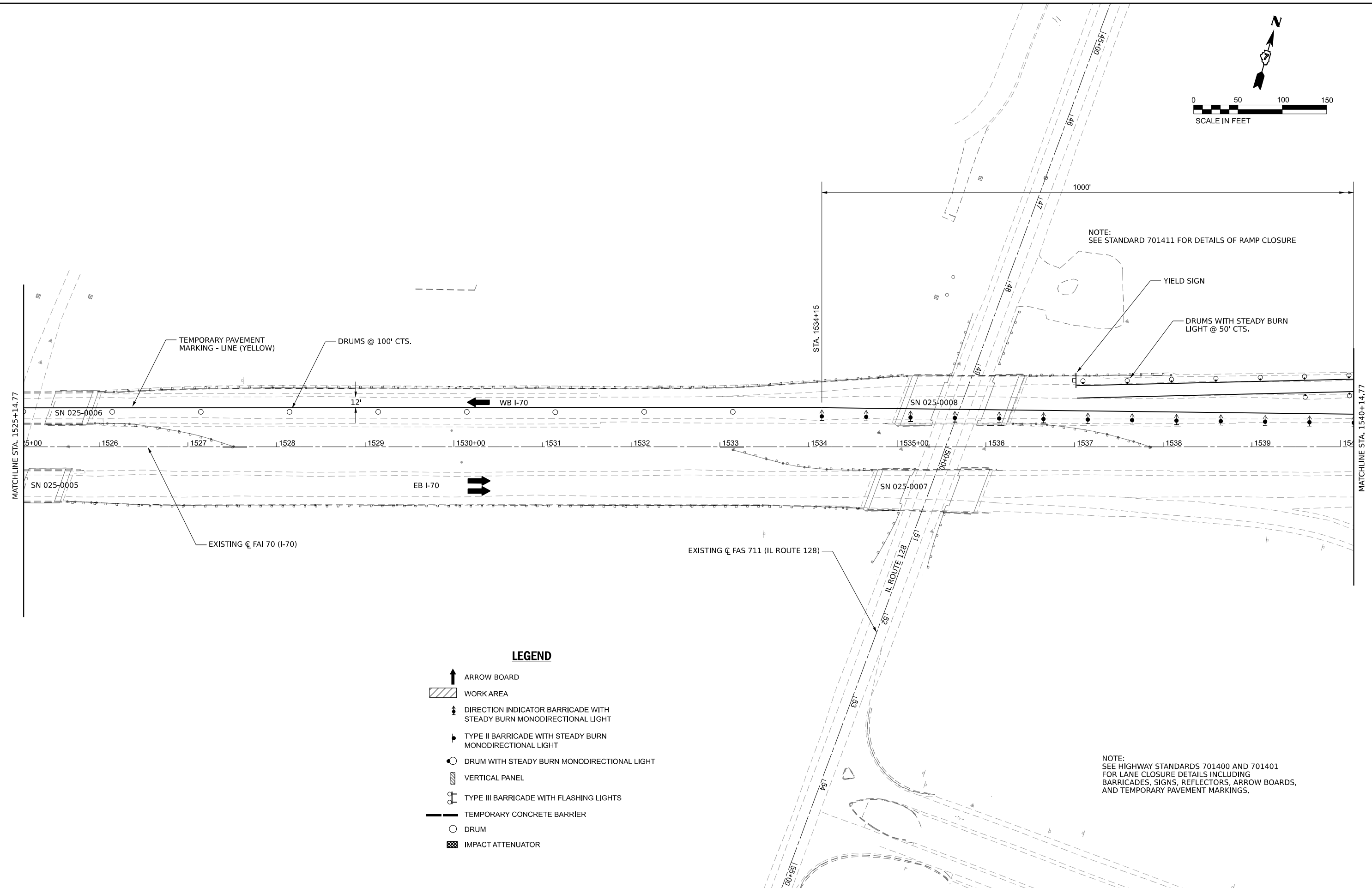
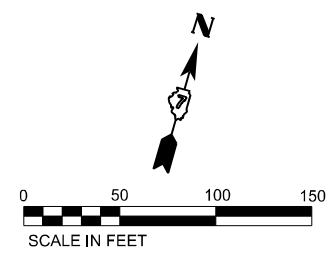
**STATE OF ILLINOIS
DEPARTMENT OF TRANSPORTATION**

**FAI ROUTE 70 - INTERSTATE 70
MAINTENANCE OF TRAFFIC**

SCALE: 1"=50' SHEET 2 OF 4 SHEETS STA. TO STA.

F.A.I. RTE.	SECTION	COUNTY	TOTAL SHEETS	SHEET NO.
70	(26-0,1)MED	EFFINGHAM	21	12
CONTRACT NO. 74D57				

ILLINOIS FED. AID PROJECT



NOTE:
SEE STANDARD 701411 FOR DETAILS OF RAMP CLOSURE

YIELD SIGN
DRUMS WITH STEADY BURN LIGHT @ 50' CTS.

TEMPORARY PAVEMENT MARKING - LINE (YELLOW)
DRUMS @ 100' CTS.

WB I-70

EB I-70

EXISTING C FAI 70 (I-70)

EXISTING C FAS 711 (IL ROUTE 128)

- LEGEND**
- ARROW BOARD
 - WORK AREA
 - DIRECTION INDICATOR BARRICADE WITH STEADY BURN MONODIRECTIONAL LIGHT
 - TYPE II BARRICADE WITH STEADY BURN MONODIRECTIONAL LIGHT
 - DRUM WITH STEADY BURN MONODIRECTIONAL LIGHT
 - VERTICAL PANEL
 - TYPE III BARRICADE WITH FLASHING LIGHTS
 - TEMPORARY CONCRETE BARRIER
 - DRUM
 - IMPACT ATTENUATOR

NOTE:
SEE HIGHWAY STANDARDS 701400 AND 701401 FOR LANE CLOSURE DETAILS INCLUDING BARRICADES, SIGNS, REFLECTORS, ARROW BOARDS, AND TEMPORARY PAVEMENT MARKINGS.



USER NAME = mackl	DESIGNED - DRM	REVISED -
PLOT SCALE = 0.16666633' / in.	DRAWN - DRM	REVISED -
PLOT DATE = 6/17/2025	CHECKED - CS	REVISED -
	DATE - 01/31/2025	REVISED -

STATE OF ILLINOIS
DEPARTMENT OF TRANSPORTATION


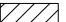








FAI ROUTE 70 - INTERSTATE 70
MAINTENANCE OF TRAFFIC

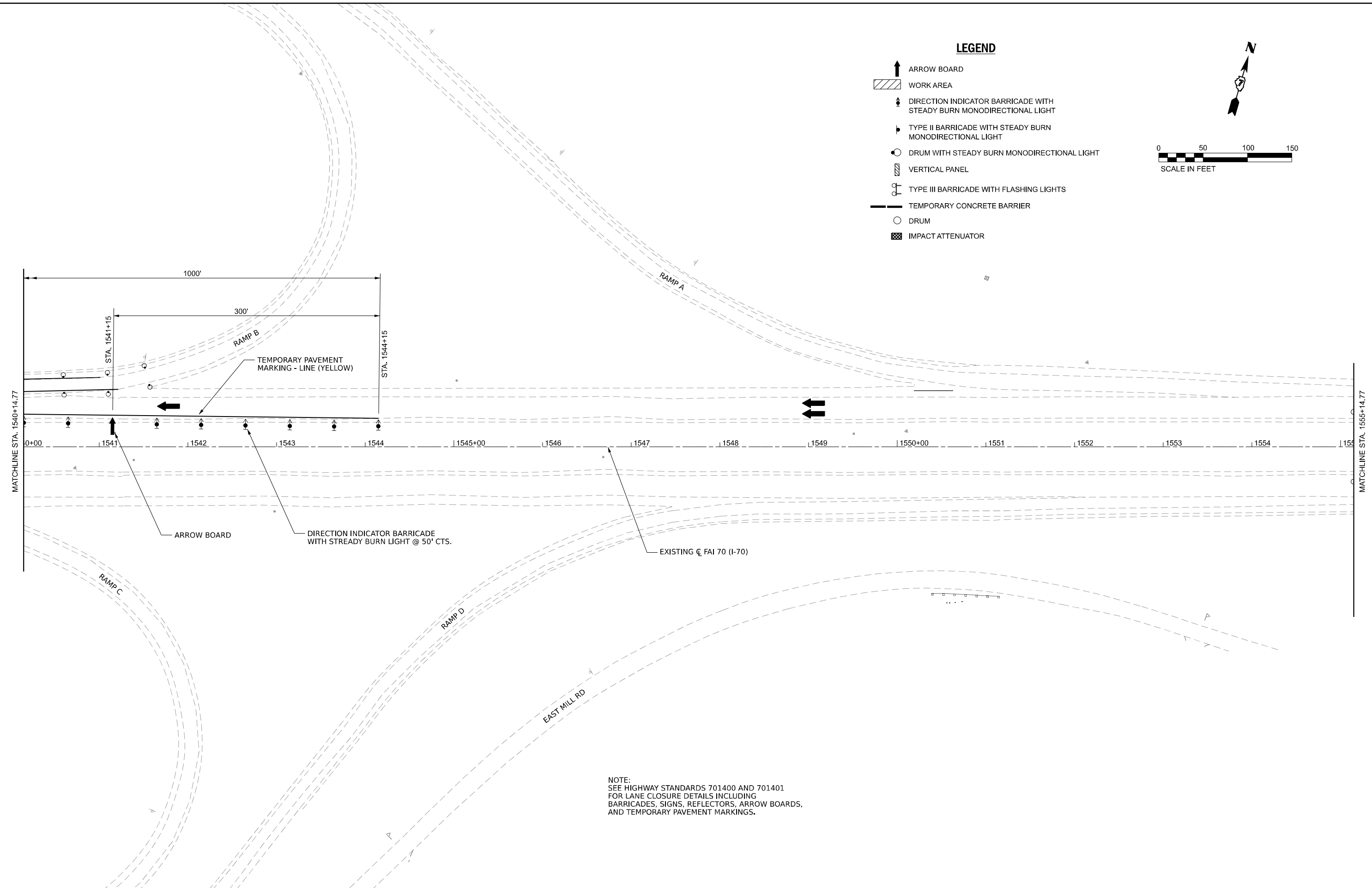
SCALE: 1"=50' SHEET 3 OF 4 SHEETS STA. TO STA.

F.A.I. RTE.	SECTION	COUNTY	TOTAL SHEETS	SHEET NO.
70	(26-0)MED	EFFINGHAM	21	13
CONTRACT NO. 74D57				

ILLINOIS FED. AID PROJECT

LEGEND

-  ARROW BOARD
-  WORK AREA
-  DIRECTION INDICATOR BARRICADE WITH STEADY BURN MONODIRECTIONAL LIGHT
-  TYPE II BARRICADE WITH STEADY BURN MONODIRECTIONAL LIGHT
-  DRUM WITH STEADY BURN MONODIRECTIONAL LIGHT
-  VERTICAL PANEL
-  TYPE III BARRICADE WITH FLASHING LIGHTS
-  TEMPORARY CONCRETE BARRIER
-  DRUM
-  IMPACT ATTENUATOR



NOTE:
SEE HIGHWAY STANDARDS 701400 AND 701401
FOR LANE CLOSURE DETAILS INCLUDING
BARRICADES, SIGNS, REFLECTORS, ARROW BOARDS,
AND TEMPORARY PAVEMENT MARKINGS.



USER NAME = mackl	DESIGNED - DRM	REVISED -
PLOT SCALE = 0.16666633' / in.	DRAWN - DRM	REVISED -
PLOT DATE = 6/17/2025	CHECKED - CS	REVISED -
	DATE - 01/31/2025	REVISED -

**STATE OF ILLINOIS
DEPARTMENT OF TRANSPORTATION**

**FAI ROUTE 70 - INTERSTATE 70
MAINTENANCE OF TRAFFIC**

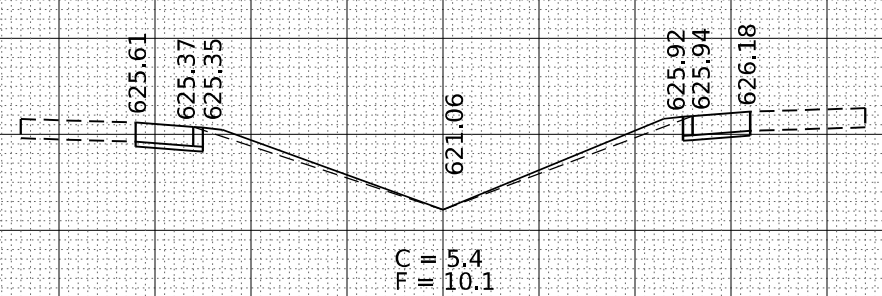
SCALE: 1"=50' SHEET 4 OF 4 SHEETS STA. TO STA.

F.A.I. RTE.	SECTION	COUNTY	TOTAL SHEETS	SHEET NO.
70	(26-0,1)MED	EFFINGHAM	21	14
CONTRACT NO. 74D57				
ILLINOIS FED. AID PROJECT				

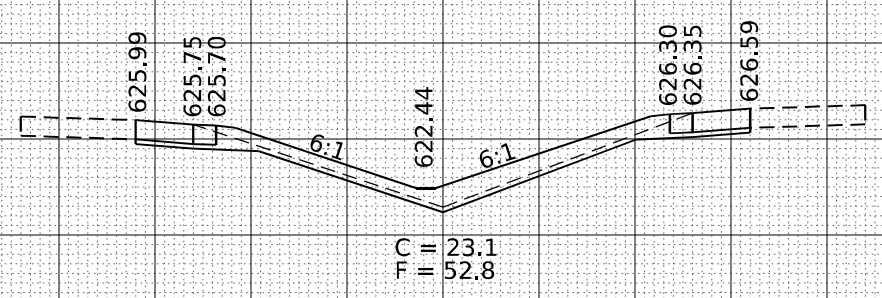
DATE	
BY	
SURVEYED	
PLOTTED	
TEMPLATE	
NOTE BOOK	
AREAS CHECKED	
NO.	

DATE	
BY	
SURVEYED	
PLOTTED	
TEMPLATE	
NOTE BOOK	
AREAS CHECKED	
NO.	

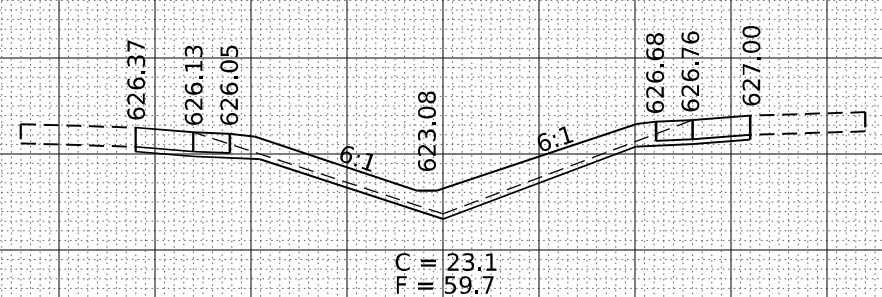
60 40 20 0 20 40 60



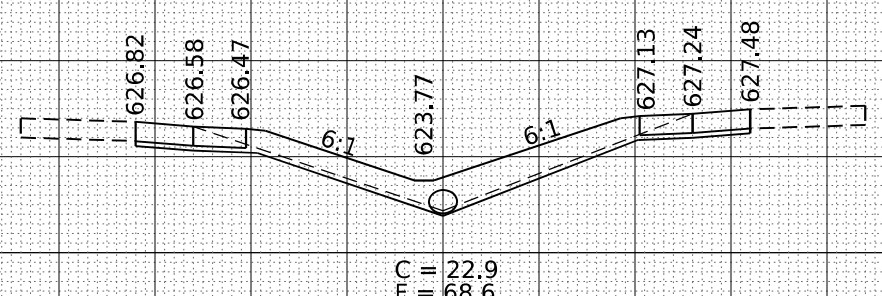
1453+00 630
625



1453+25 625
620



1453+50 625
620



1453+75 625
620

60 40 20 0 20 40 60



USER NAME = mackl
PLOT SCALE = 20.000' / in.
PLOT DATE = 6/17/2025

DESIGNED -
DRAWN -
CHECKED -
DATE -

REVISED -
REVISED -
REVISED -
REVISED -

STATE OF ILLINOIS
DEPARTMENT OF TRANSPORTATION

FAI ROUTE 70 - INTERSTATE 70
CROSS SECTIONS

SHEET 1 OF 7 SHEETS STA. TO STA.

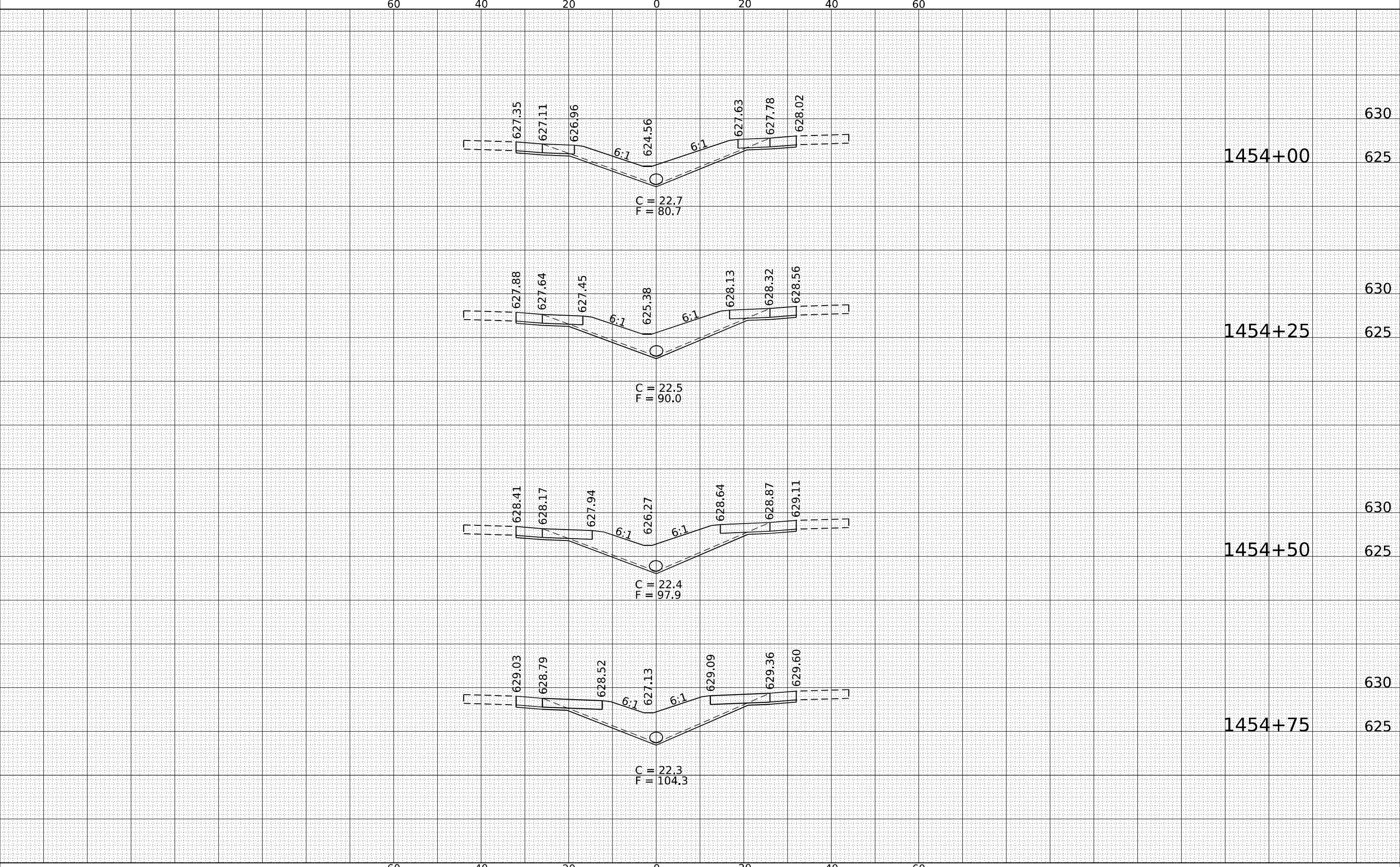
F.A.J. RTE.	SECTION	COUNTY	TOTAL SHEETS	SHEET NO.
70	(26-0,1)MED	EFFINGHAM	21	15
CONTRACT NO. 74D57				

ILLINOIS FED. AID PROJECT

DATE	BY

DATE	BY

ORIGINAL SURVEY	SURVEYED
NOTE BOOK NO.	PLOTTED
	TEMPLATE
	AREAS CHECKED
	AREAS CHECKED



1454+00	630
1454+00	625
1454+25	630
1454+25	625
1454+50	630
1454+50	625
1454+75	630
1454+75	625



USER NAME = mackl	DESIGNED -	REVISÉ -
	DRAWN -	REVISÉ -
	CHECKED -	REVISÉ -
	DATE -	REVISÉ -

STATE OF ILLINOIS
DEPARTMENT OF TRANSPORTATION

FAI ROUTE 70 - INTERSTATE 70
CROSS SECTIONS

SHEET 2 OF 7 SHEETS STA. TO STA.

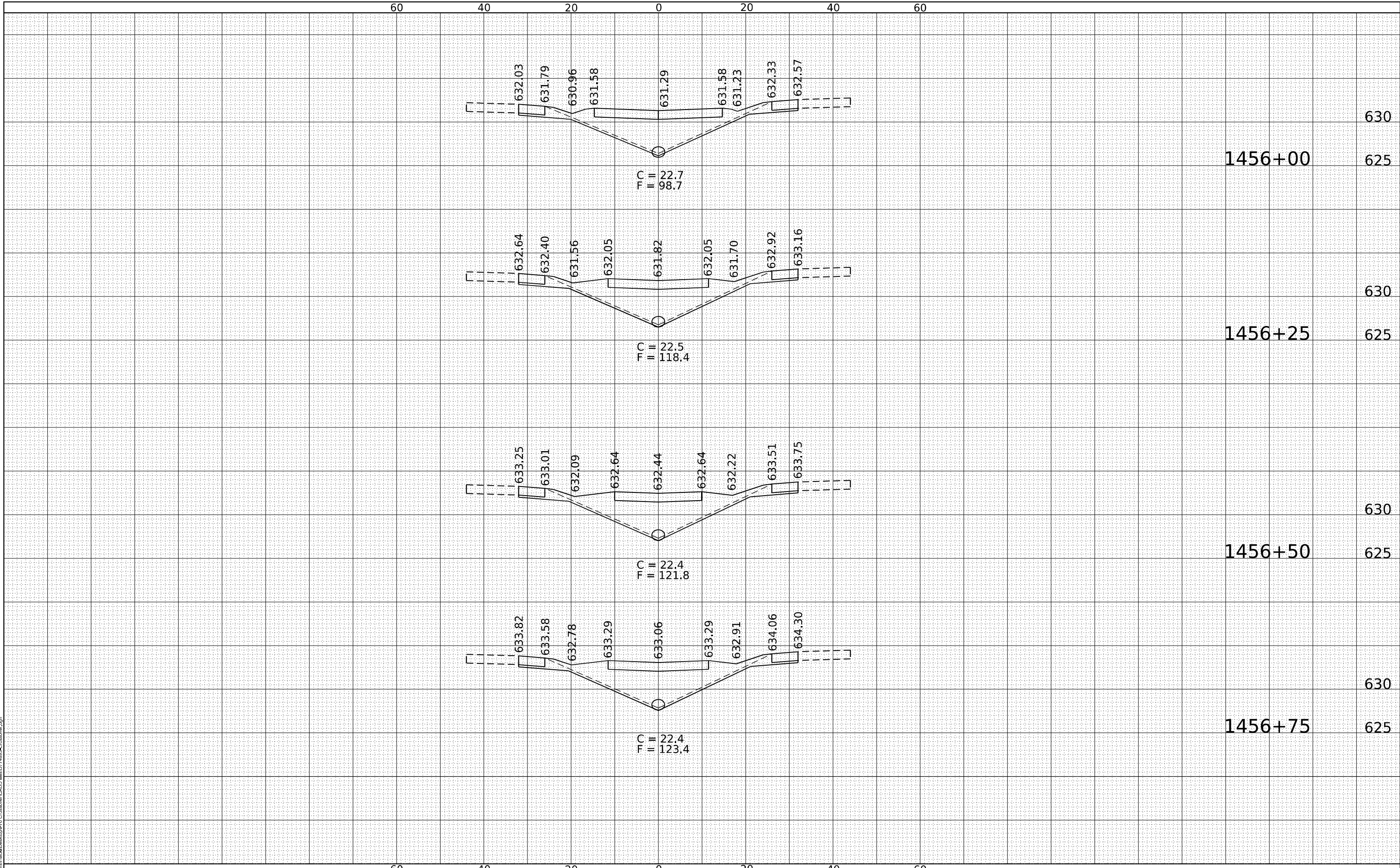
F.A.I. RTE.	SECTION	COUNTY	TOTAL SHEETS	SHEET NO.
70	(26-0,1)MED	EFFINGHAM	21	16
CONTRACT NO. 74D57				

ILLINOIS FED. AID PROJECT

DATE	
BY	
SURVEYED	
PLOTTED	
TEMPLATE	
AREAS	
CHECKED	
NO.	

DATE	
BY	
SURVEYED	
PLOTTED	
TEMPLATE	
AREAS	
CHECKED	
NO.	

MODEL: D:\in\ill
 FILE NAME: C:\Users\mackl\Desktop\70 Crosssec\CADD\IllinD74895-Crosssec.dgn



USER NAME = mackl
 PLOT SCALE = 20.000' / in.
 PLOT DATE = 6/17/2025

DESIGNED -
 DRAWN -
 CHECKED -
 DATE -

REVISED -
 REVISED -
 REVISED -
 REVISED -

STATE OF ILLINOIS
 DEPARTMENT OF TRANSPORTATION

FAI ROUTE 70 - INTERSTATE 70
 CROSS SECTIONS

SHEET 4 OF 7 SHEETS STA. TO STA.

F.A.J. RTE.	SECTION	COUNTY	TOTAL SHEETS	SHEET NO.
70	(26-0,IMED	EFFINGHAM	21	18
CONTRACT NO. 74D57				

ILLINOIS FED. AID PROJECT

