

STATE OF ILLINOIS
DEPARTMENT OF TRANSPORTATION

F.A.I. RTE.	SECTION	COUNTY	TOTAL SHEETS	SHEET NO.
I 55	D6 CJS 2026	SANGAMON	19	1
		ILLINOIS	CONTRACT NO. 72416	

FOR INDEX OF SHEETS, SEE SHEET NO. 2

PROPOSED HIGHWAY PLANS

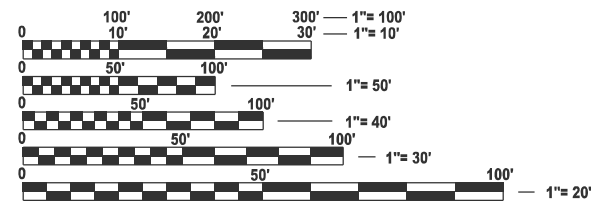
FAI 55 (I 55)
SECTION D6 CJS 2026
PROJECT NHPP-ZH3Y(755)
CRACK AND JOINT SEALING
SANGAMON COUNTY

PROJECT OMISSION

STATION	STATION	
253+11.12	to 271+05.43	SB
252+22.87	to 271+05.43	NB
286+61.25	to 293+57.18	SB
286+97.90	to 299+35.77	NB

BRIDGE OMISSION

STRUCTURE No	STATION	STATION
SN 084-0500 NB	274+35.13	to 281+57.69
SN 084-0499 SB	274+35.13	to 281+57.69
SN 084-0112 NB	365+64.45	to 368+99.23
SN 084-0113 SB	367+67.61	to 371+12.89



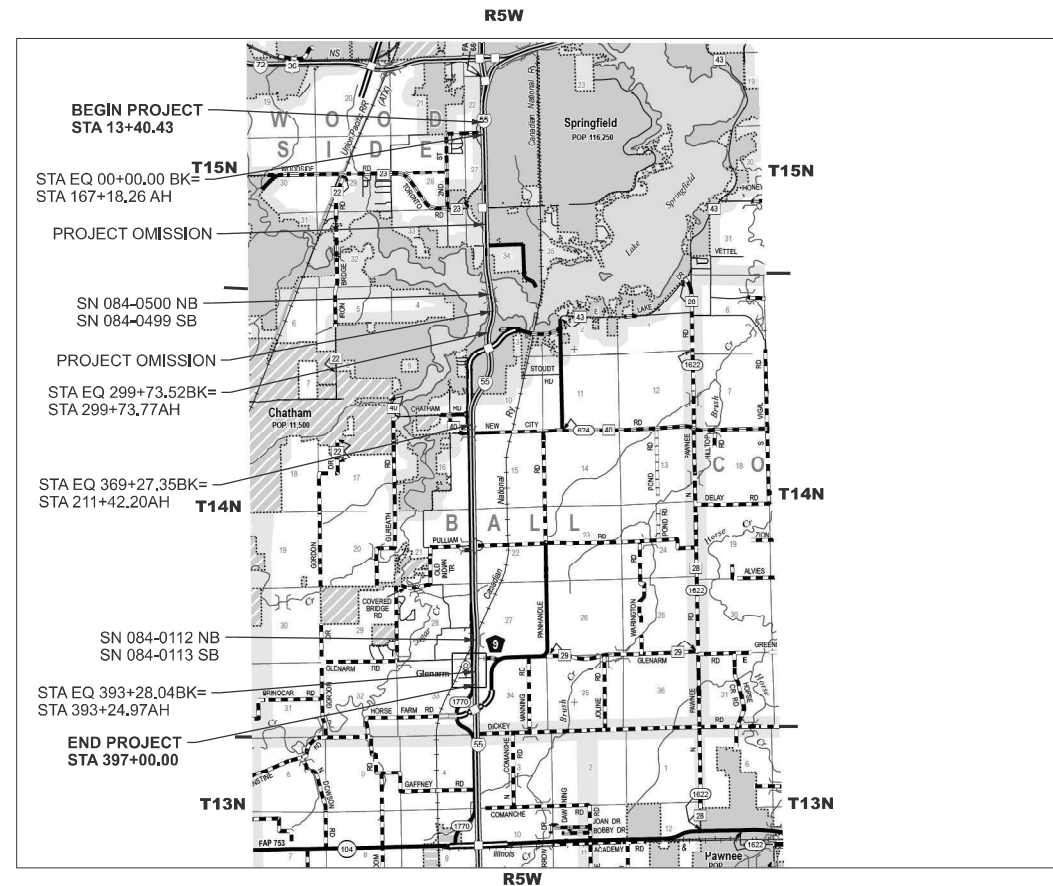
FULL SIZE PLANS HAVE BEEN PREPARED USING STANDARD ENGINEERING SCALES. REDUCED SIZED PLANS WILL NOT CONFORM TO STANDARD SCALES. IN MAKING MEASUREMENTS ON REDUCED PLANS, THE ABOVE SCALES MAY BE USED.

J.U.L.I.E.
JOINT UTILITY LOCATION INFORMATION FOR EXCAVATION
1-800-892-0123
OR 811

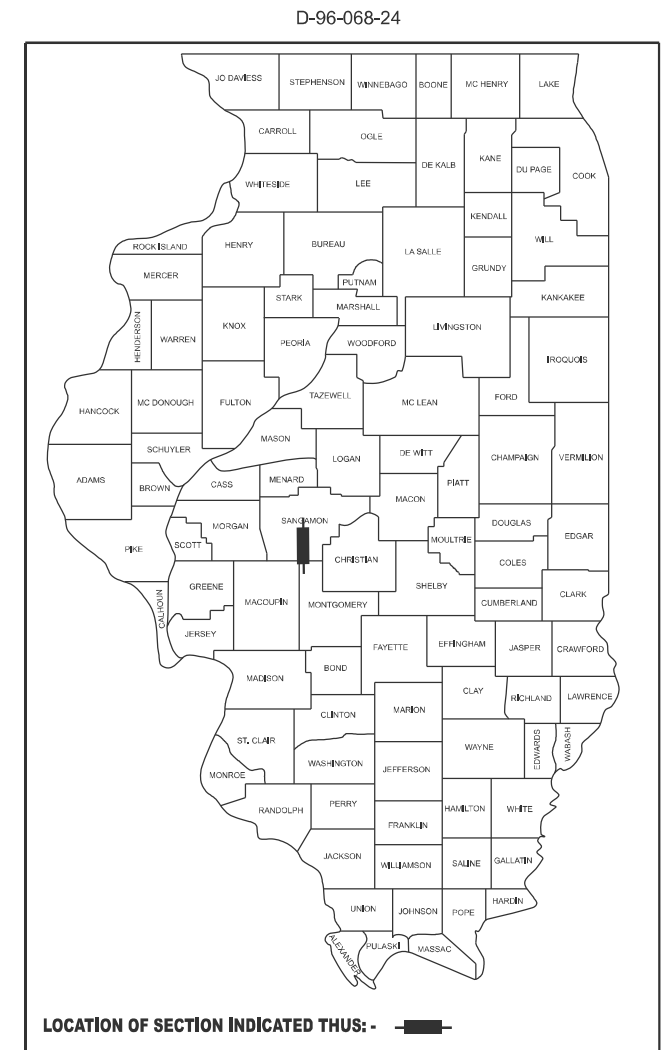
PROJECT ENGINEER - JON KELLEY - (217) 785-2739
PROJECT MANAGER - CHRIS SIEFERT - (217) 524-7940

CONTRACT NO. 72416

C-96-091-24



LOCATION MAP
GROSS LENGTH = 40,110.12 FT. = 7.597 MILE
NET LENGTH = 35,932.35 FT. = 6.805 MILE (NB)
NET LENGTH = 36,552.04 FT. = 6.923 MILE (SB)



LOCATION OF SECTION INDICATED THUS: - ■ -

Highway classification
INTERSTATE
ADT: 35700 (2023)
MU: 7700 (21.57%)
SU: 1150 (3.22%)
PV: 26850 (75.21%)

STATE OF ILLINOIS
DEPARTMENT OF TRANSPORTATION

SUBMITTED June 26 2025

Lora Reaney Cat REGIONAL ENGINEER

August 15 2025

Scott E. Etkin ENGINEER OF DESIGN AND ENVIRONMENT

August 15 2025

John P. Barry DIRECTOR OF HIGHWAYS PROJECT IMPLEMENTATION

PRINTED BY THE AUTHORITY
OF THE STATE OF ILLINOIS

INDEX OF SHEETS

SHEET No.	SHEET DESCRIPTION
1	COVER
2	GENERAL NOTES
3	SUMMARY OF QUANTITIES
4	SCHEDULES
5-6	TYPICAL SECTIONS
7-9	ALIGNMENT, TIES & BENCHMARKS
10-18	PLAN SHEETS
19	DETAILS

HIGHWAY STANDARDS

No.	DESCRIPTION
000001-08	STANDARD SYMBOLS, ABBREVIATIONS, AND PATTERNS
001006	DECIMAL OF AN INCH AND OF A FOOT
701101-05	OFF-RD OPERATIONS, MULTILANE, 15' TO 24" FROM PAVEMENT EDGE
701106-02	OFF-RD OPERATIONS, MULTILANE, MORE THAN 15' AWAY
701426-09	LANE CLOSURE, MULTILANE, INTERMITTENT OR MOVING OPER., FOR SPEEDS \geq 45 MPH
701456-05	PARTIAL EXIT RAMP CLOSURE, FREEWAY/EXPRESSWAY
701901-10	TRAFFIC CONTROL DEVICES

APPLICATION RATES

The following rates of application were utilized to calculate quantities.

S of 6th Street Interchange to N of Lake Bridge (N of concrete pavement)
 EOP/Shoulder Joints and Ramps: 0.585 lb/ft
 Lane Lines: 0.308 lb/ft

HMA pavement at Lake Bridge
 EOP/Shoulder Joints: 0.215 lb/ft
 Lane Lines: 0.180 lb/ft

S of Lake Bridge (S of concrete pavement) to N of Glenarm Interchange (Include ramps at E Lake Drive Interchange)
 EOP/Shoulder Joints: 0.215 lb/ft
 Lane Lines: 0.215 lb/ft

Entire project limits:




Transverse Cracks: 0.350 lb/ft

GENERAL NOTES

The contractor shall make every effort to avoid damage or coverage of existing pavement marking with crack sealant. The contractor shall notify the engineer of any anticipated pavement marking conflicts and any damage shall be documented. Excess sealant should not be squeezed out over existing pavement marking. The engineer shall contact the district 6 traffic operations engineer at (217)785-5306 if more than 25% of the existing pavement marking is damaged or covered by sealant.

COMMITMENTS

1. None

STATE OF ILLINOIS DEPARTMENT OF TRANSPORTATION DIVISION OF HIGHWAYS DISTRICT 6			
EXAMINED	June 26,	20	25
 ENGINEER OF OPERATIONS			
EXAMINED	June 20,	20	25
 ENGINEER OF PROJECT IMPLEMENTATION			
EXAMINED	June 20,	20	25
 ENGINEER OF PROGRAM DEVELOPMENT			

STATE OF ILLINOIS
DEPARTMENT OF TRANSPORTATION

GENERAL NOTES

SCALE: NTS SHEET 1 OF 1 SHEETS STA. TO STA.

F.A.I. RTE.	SECTION	COUNTY	TOTAL SHEETS	SHEET NO.
55	D6 CJS 2026	SANGAMON	19	2
CONTRACT NO. 72416				
ILLINOIS FED. AID PROJECT				

USER NAME = Christopher.Siefert	DESIGNED -	REVISED -
	DRAWN -	REVISED -
	CHECKED -	REVISED -
PLOT DATE = 6/23/2025	DATE -	REVISED -

ROUTING AND FILLING SCHEDULE										
STA	TO	STA	LENGTH (FOOT)	OMISSION (FOOT)	LANES JOINT	LANE APPL. RATE (LB/FT)	EOP JOINT	EOP APPL. RATE (LB/FT)	45100100 CRACK ROUTING (PAV) (FOOT)	45100200 CRACK FILLING (POUND)
I-55										
SB										
13+40.43		00+00.00	1340		2	0.308	2	0.585		2394
STATION EQUATION: 00+00.00 BK=167+18.26 AH										
167+18.26		253+11.12	8593		2	0.308	2	0.585		15347
253+11.12	PROJECT OMISSION	271+05.43	1794	1794						
271+05.43		274+35.13	330		2	0.180	2	0.215		260
274+35.13	BRIDGE OMISSION	281+57.69	723	723						
281+57.69		286+61.25	504		2	0.180	2	0.215		398
286+61.25	PROJECT OMISSION	293+57.18	696	696						
293+57.18		299+73.52	616		2	0.215	2	0.215		530
STATION EQUATION: 299+73.52 BK=299+73.77 AH										
299+73.77		369+27.35	6954		2	0.215	2	0.215		5980
STATION EQUATION: 369+27.35 BK=211+42.20 AH										
211+42.20		367+67.61	15625		2	0.215	2	0.215		13438
367+67.61	BRIDGE OMISSION	371+12.89	345	345						
371+12.89		393+28.04	2215		2	0.215	2	0.215		1905
STATION EQUATION: 393+28.04 BK=393+24.97AH										
393+24.97		397+00.00	375		2	0.215	2	0.215		323
ESTIMATED 50 TRANSVERSE CRACKS PER LANE										
NB										
13+40.43		00+00.00	1340		2	0.308	2	0.585		483
STATION EQUATION: 00+00.00 BK=167+18.26 AH										
167+18.26		252+22.87	8505		2	0.308	2	0.585		3062
252+22.87	PROJECT OMISSION	271+05.43	1883	1883						
271+05.43		274+35.13	330		2	0.180	2	0.215		
274+35.13	BRIDGE OMISSION	281+57.69	723	723						
281+57.69		286+97.90	540		2	0.180	2	0.215		
286+97.90	PROJECT OMISSION	299+35.77	1238	1238						
299+35.77		299+73.52	38		2	0.215	2	0.215		
STATION EQUATION: 299+73.52 BK=299+73.77 AH										
299+73.77		369+27.35	6954		2	0.215	2	0.215		
STATION EQUATION: 369+27.35 BK=211+42.20 AH										
211+42.20		365+64.45	15422		2	0.215	2	0.215		
365+64.45	BRIDGE OMISSION	368+99.23	335	335						
368+99.23		393+28.04	2429		2	0.215	2	0.215		874
STATION EQUATION: 393+28.04 BK=393+24.97AH										
393+24.97		397+00.00	375		2	0.215	2	0.215		135
ESTIMATED 50 TRANSVERSE CRACKS PER LANE										

ROUTING AND FILLING SCHEDULE										
STA	TO	STA	LENGTH (FOOT)	OMISSION (FOOT)	LANES JOINT	LANE APPL. RATE (LB/FT)	EOP JOINT	EOP APPL. RATE (LB/FT)	45100100 CRACK ROUTING (PAV) (FOOT)	45100200 CRACK FILLING (POUND)
TORONTO ROAD INTERCHANGE										
RAMP 1										
00+00.00		20+08.00	2008				2	0.585		2349
11+86.00		20+08.00	822		2	0.308				506
ESTIMATED 32 TRANSVERSE CRACKS										
0.350 512 180										
RAMP 2										
20+75.00		43+90.35	2315				2	0.585		2709
ESTIMATED 26 TRANSVERSE CRACKS										
0.350 416 146										
RAMP 3										
00+00.00		20+06.00	2006				2	0.585		2347
15+25.00		20+06.00	481		1	0.308				148
ESTIMATED 37 TRANSVERSE CRACKS										
0.350 592 208										
RAMP 4										
20+71.45		42+62.98	2192				2	0.585		2564
ESTIMATED 24 TRANSVERSE CRACKS										
0.350 384 135										
LAKE SHORE DRIVE INTERCHANGE										
RAMP A										
00+00.00		17+68.00	1768				2	0.215		760
17+68.00		18+66.00	98		2	0.215	2	0.215		84
14+90.00		17+68.00	278		1	0.215				60
ESTIMATED 32 TRANSVERSE CRACKS										
0.350 512 180										
RAMP B										
19+20.00		40+17.14	2097				2	0.215		902
ESTIMATED 18 TRANSVERSE CRACKS										
0.350 288 101										
RAMP C										
00+00.00		27+91.40	2791				2	0.215		1200
27+91.40		28+39.40	48		2	0.215	2	0.215		41
ESTIMATED 30 TRANSVERSE CRACKS										
0.350 480 168										
RAMP D										
03+00.00		28+02.33	2502				2	0.215		1076
ESTIMATED 19 TRANSVERSE CRACKS										
0.350 304 107										
LOOP E										
04+93.00		28+02.33	2309				2	0.215		993
ESTIMATED 35 TRANSVERSE CRACKS										
0.350 560 196										
TOTAL										
7648 63550										

MODEL: schedule (Sheet)
 FILE NAME: c:\p\work\project\isefert\cal1017544\ID672416_sht_schedule.dgn

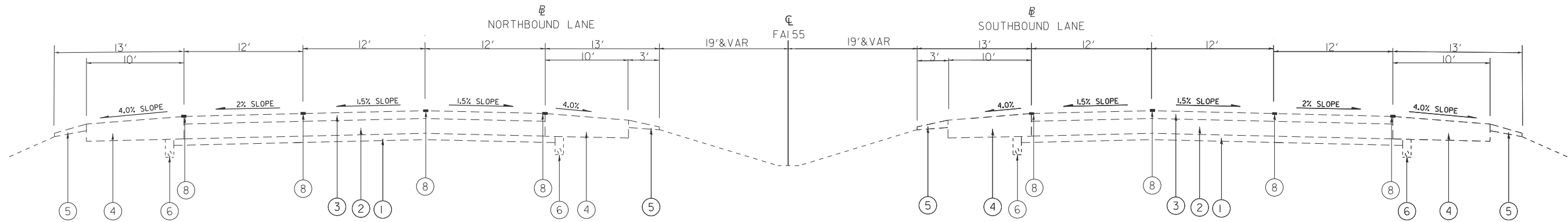
USER NAME = Christopher.Siefert	DESIGNED -	REVISED -
	DRAWN -	REVISED -
	CHECKED -	REVISED -
PLOT DATE = 6/24/2025	DATE -	REVISED -

STATE OF ILLINOIS
DEPARTMENT OF TRANSPORTATION

SCALE: NTS SHEET 1 OF 1 SHEETS STA. TO STA.

SCHEDULES

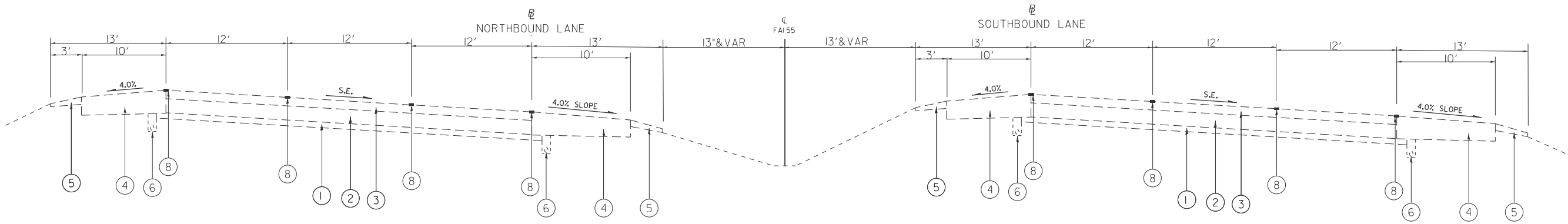
F.A.I. RTE.	SECTION	COUNTY	TOTAL SHEETS	SHEET NO.
I55	D6 CJS 2026	SANGAMON	19	4
CONTRACT NO. 72416				
ILLINOIS FED. AID PROJECT				



NB FAI-55
 STA 13+40.43 TO STA 00+00.00
 EQ STA 00+00.00 BK = STA 167+18.26 AH
 STA 167+18.26 TO STA 252+22.87
 STA 271+05.43 TO STA 274+35.13
 BRIDGE OMISSION STA 274+35.13 TO STA 281+57.69
 STA 281+57.69 TO STA 286+97.90
 STA 299+73.77 TO STA 304+57.74
 STA 318+48.04 TO STA 323+41.34
 STA 346+74.90 TO STA 352+41.40
 EQ STA 369+27.35 BK = STA 211+42.20 AH
 STA 211+42.20 TO STA 339+99.83
 STA 353+08.09 TO STA 353+59.38
 STA 379+34.24 TO STA 380+09.08
 EQ STA 393+28.04 BK = STA 393+24.97 AH
 STA 393+24.97 TO STA 397+00.00

TYPICAL SECTION 1

SB FAI-55
 STA 13+40.43 TO STA 00+00.00
 EQ STA 00+00.00 BK = STA 167+18.26 AH
 STA 167+18.26 TO STA 253+11.12
 STA 271+05.43 TO STA 274+35.13
 BRIDGE OMISSION STA 274+35.13 TO STA 281+57.69
 STA 281+57.69 TO STA 286+61.25
 STA 299+73.77 TO STA 304+57.74
 STA 318+48.04 TO STA 323+41.34
 STA 346+74.90 TO STA 352+41.40
 EQ STA 369+27.35 BK = STA 211+42.20 AH
 STA 211+42.20 TO STA 339+99.83
 STA 353+08.09 TO STA 353+59.38
 STA 379+34.24 TO STA 380+09.08
 EQ STA 393+28.04 BK = STA 393+24.97 AH
 STA 393+24.97 TO STA 397+00.00



NB FAI-55
 STA 299+35.77 TO STA 299+73.62
 EQ STA 299+73.62 BK = STA 299+73.77 AH
 STA 323+41.34 TO STA 346+74.90
 STA 353+59.38 TO STA 365+64.45
 BRIDGE OMISSION STA 365+64.45 TO STA 368+99.23
 STA 368+99.23 TO STA 379+34.24

TYPICAL SECTION 2

SB FAI-55
 STA 293+57.18 TO STA 299+73.62
 EQ STA 299+73.62 BK = STA 299+73.77 AH
 STA 323+41.34 TO STA 346+74.90
 STA 353+59.38 TO STA 367+67.61
 BRIDGE OMISSION STA 367+67.61 TO STA 371+12.89
 STA 371+12.89 TO STA 379+34.24

LEGEND

- ① EX STABILIZED SUB-BASE 4"
- ② EX CRC PAVEMENT 8"
- ③ EX HMA SURFACE (THICKNESS VARIES)
- ④ EX HMA SHOULDERS (THICKNESS VARIES)
- ⑤ EX AGGREGATE SHOULDER
- ⑥ EX PIPE UNDERDRAINS 4"
- ⑦ EX PCC PAVEMENT 8"
- ⑧ PR JOINT FILLING

MODEL: Untitled (Sheet)
 FILE NAME: c:\p\work\p\work\isef\cal\1017644\ID672416_sht_new_typical8.dgn

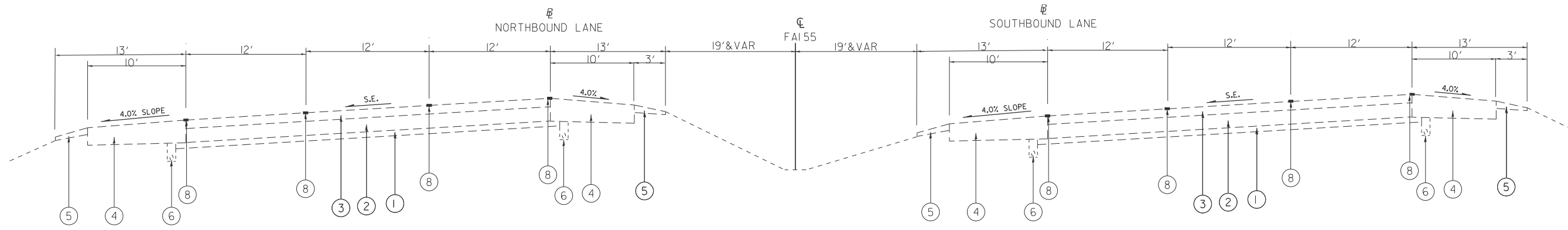
USER NAME = Iryna.Tsymbalyuk	DESIGNED -	REVISED -
	DRAWN -	REVISED -
	CHECKED -	REVISED -
PLOT DATE = 6/10/2025	DATE -	REVISED -

**STATE OF ILLINOIS
DEPARTMENT OF TRANSPORTATION**

TYPICAL SECTIONS

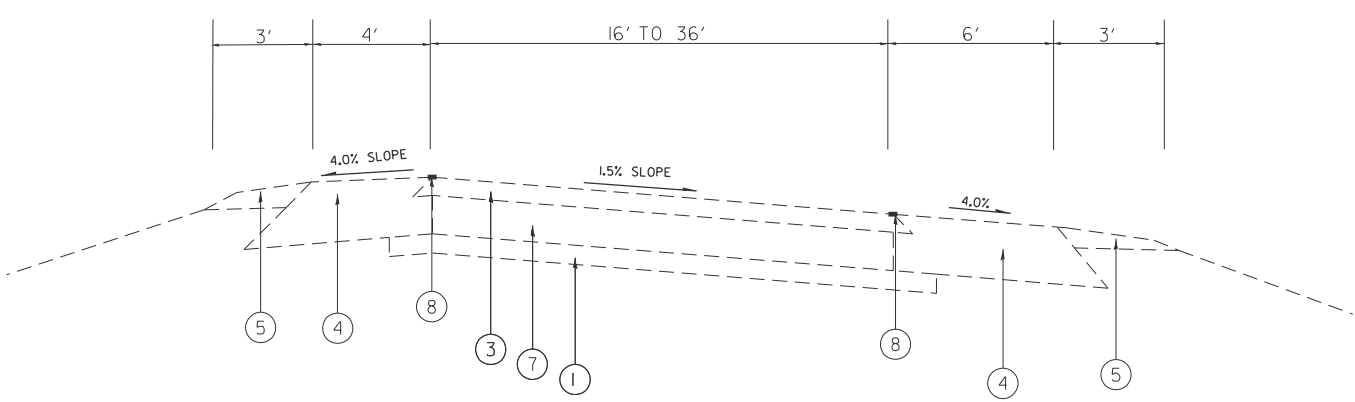
SCALE: NTS SHEET 1 OF 2 SHEETS STA. TO STA.

F.A.I. RTE.	SECTION	COUNTY	TOTAL SHEETS	SHEET NO.
55	D6 CJS 2026	SANGAMON	19	5
CONTRACT NO. 72416				
ILLINOIS FED. AID PROJECT				



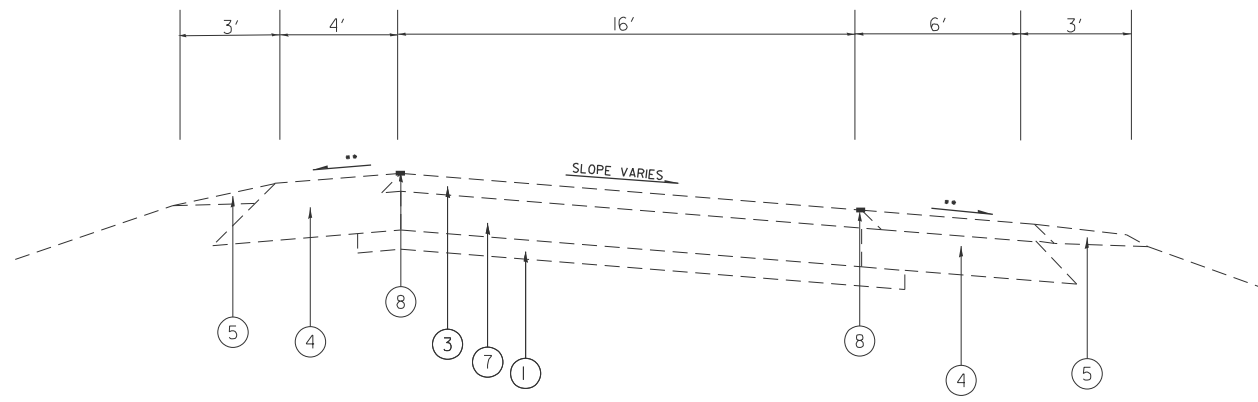
TYPICAL SECTION 3

STA 304+57.74 TO STA 318+48.04
 STA 352+41.40 TO STA 369+27.35
 EQ STA 369+27.35 BK = STA 211+42.20 AH
 STA 339+99.83 TO STA 353+08.09
 STA 380+09.08 TO STA 393+28.04
 EQ STA 393+28.04 BK = STA 393+24.97 AH



TYPICAL RAMP

TORONTO RD INTERCHANGE (TANGENT)
 E LAKE SHORE DR INTERCHANGE (TANGENT)



TYPICAL RAMP

TORONTO RD INTERCHANGE (SUPER ELEVATION)
 E LAKE SHORE DR INTERCHANGE (SUPER ELEVATION)

LEGEND

- ① EX STABILIZED SUB-BASE 4"
- ② EX CRC PAVEMENT 8"
- ③ EX HMA SURFACE (THICKNESS VARIES)
- ④ EX HMA SHOULDERS (THICKNESS VARIES)
- ⑤ EX AGGREGATE SHOULDER
- ⑥ EX PIPE UNDERDRAINS 4"
- ⑦ EX PCC PAVEMENT 8"
- ⑧ PR JOINT FILLING

MODEL: Untitled-1 [Sheet]
 FILE NAME: c:\p\work\project\isefert\cald1017644\ID672416_sht_new_typicals.dgn

USER NAME = Christopher.Siefert	DESIGNED -	REVISED -
	DRAWN -	REVISED -
	CHECKED -	REVISED -
PLOT DATE = 6/24/2025	DATE -	REVISED -

**STATE OF ILLINOIS
 DEPARTMENT OF TRANSPORTATION**

TYPICAL SECTIONS			
SCALE: NTS	SHEET 2	OF 2 SHEETS	STA. TO STA.

F.A.I. RTE.	SECTION	COUNTY	TOTAL SHEETS	SHEET NO.
55	D6 CJS 2026	SANGAMON	19	6
CONTRACT NO. 72416				
ILLINOIS FED. AID PROJECT				

HORIZONTAL ALIGNMENT CONTROL								
NAD83/1997 ADJ - STATE PLANE WEST ZONE								
ALIGNMENT NAME: I55 M066								
DESCRIPTION: I 55 MAINLINE								
POINT TYPE	STATION	NORTHING	EASTING	RADIUS	LENGTH	TANGENT	DELTA/THETA	DIRECTION
POT	0+00.00	1115131.222	2443552.942					
PI	38+84.76	1119015.141	2443472.344					
POT	76+50.23	1122779.983	2443403.202					
ALIGNMENT NAME: I55 E501								
DESCRIPTION: I 55 MAINLINE								
POINT TYPE	STATION	NORTHING	EASTING	RADIUS	LENGTH	TANGENT	DELTA/THETA	DIRECTION
POT	167+19.74	1115132.708	2443553.213					
PI	173+99.83	1114452.770	2443567.614					
PI	186+99.83	1113153.056	2443595.104					
PI	216+99.70	1110153.851	2443658.352					
PI	232+00.00	1108653.893	2443690.187					
ALIGNMENT NAME: I55 A101								
DESCRIPTION: I 55 MAINLINE								
POINT TYPE	STATION	NORTHING	EASTING	RADIUS	LENGTH	TANGENT	DELTA/THETA	DIRECTION
PI	232+00.000	1108653.893	2443690.187					
PI	244+99.160	1107355.014	2443717.406					
PC	256+61.650	1106192.786	2443741.761					
PI	260+25.130	1105829.379	2443749.376	5725.33	726.00	363.49	07°15'55.40"	LEFT
PT	263+87.650	1105469.853	2443802.889					
PC	287+38.040	1103145.067	2444148.914					
PI	293+65.540	1102524.405	2444241.295	2864.46	1235.48	627.50	24°42'44.92"	RIGHT
PT	299+73.520	1101921.965	2444065.738					
ALIGNMENT NAME: I55 A102								
DESCRIPTION: I 55 MAINLINE								
POINT TYPE	STATION	NORTHING	EASTING	RADIUS	LENGTH	TANGENT	DELTA/THETA	DIRECTION
POT	299+73.772	1101921.965	2444065.738					
PC	304+57.738	1101457.325	2443930.338					
PI	311+66.839	1100776.541	2443731.950	2866.65	1390.29	709.10	27°47'16.31"	LEFT
PT	318+48.032	1100081.777	2443873.822					
PC	323+41.333	1099598.450	2443972.518					
PI	335+77.053	1098387.715	2444219.753	2867.97	2333.56	1235.72	46°37'10.26"	RIGHT
PT	346+74.893	1097376.442	2443509.590					
PC	352+41.393	1096912.837	2443184.025					
PI	361+13.017	1096199.529	2442683.107	2693.39	1685.95	871.62	35°51'53.24"	LEFT
PT	369+27.345	1095327.987	2442695.072					

ALIGNMENT NAME: I55 A103								
DESCRIPTION: I 55 MAINLINE								
POINT TYPE	STATION	NORTHING	EASTING	RADIUS	LENGTH	TANGENT	DELTA/THETA	DIRECTION
POT	211+42.197	1095327.987	2442695.072					
PI	225+00.000	1093970.312	2442713.710					
PI	244+99.940	1091970.560	2442741.162					
PI	265+00.025	1089970.666	2442768.781					
PI	285+00.097	1087970.785	2442796.439					
PI	300+00.215	1086470.809	2442817.120					
PI	310+00.207	1085470.915	2442831.090					
PI	330+00.151	1083471.164	2442858.900					
PC	339+99.829	1082471.583	2442872.800					
PI	346+54.222	1081817.253	2442881.900	18708.38	1308.25	654.39	04°00'23.83"	LEFT
PT	353+08.082	1081165.158	2442936.696					
PC	353+59.373	1081114.047	2442940.991					
PI	366+48.813	1079829.136	2443048.963	18840.60	2574.87	1289.44	07°49'49.34"	RIGHT
PT	379+34.238	1078541.495	2442980.872					
PC	380+09.078	1078466.759	2442976.920					
PI	386+68.831	1077807.927	2442942.080	18788.02	1318.96	659.75	04°01'20.29"	LEFT
PT	393+28.042	1077148.273	2442953.540					
ALIGNMENT NAME: I55 E002								
DESCRIPTION: I 55 MAINLINE								
POINT TYPE	STATION	NORTHING	EASTING	RADIUS	LENGTH	TANGENT	DELTA/THETA	DIRECTION
POT	393+24.969	1077148.273	2442953.540					
PI	412+86.184	1075187.354	2442987.607					
PI	436+00.094	1072873.790	2443027.616					
PI	447+41.745	1071732.308	2443047.261					
PI	462+41.961	1070232.311	2443072.867					
PI	476+60.049	1068814.425	2443096.827					
PI	489+66.025	1067508.645	2443119.439					
PI	499+87.974	1066486.847	2443137.020					
PI	547+77.366	1061698.172	2443219.870					
PI	552+39.238	1061236.367	2443227.759					
PI	562+47.092	1060228.663	2443245.123					
PI	571+99.179	1059276.716	2443261.465					
PI	612+09.526	1055266.966	2443330.678					
PI	632+61.600	1053215.187	2443365.484					
PI	647+84.140	1051692.866	2443391.308					
PI	666+76.712	1049800.555	2443422.688					
PI	688+43.500	1047634.073	2443459.115					
PI	702+20.760	1046257.005	2443482.140					
PI	715+97.860	1044880.097	2443505.162					
PI	732+38.964	1043239.245	2443533.893					
PI	742+37.995	1042240.363	2443551.159					
PI	755+81.660	1040896.901	2443574.483					
PI	768+13.415	1039665.310	2443594.565					
PI	778+97.615	1038581.275	2443613.503					
PI	790+31.269	1037447.796	2443633.447					
PI	807+38.826	1035740.489	2443662.622					
PI	817+43.180	1034736.282	2443679.807					
PI	832+38.736	1033240.946	2443705.492					
POT	837+06.077	1032773.708	2443715.285					

MODEL: I:\projects\I55\I55A103.dgn
 FILE NAME: c:\pwork\pwork\I55A103.dgn

USER NAME	= Christopher.Siefert	DESIGNED	-	REVISED	-
		DRAWN	-	REVISED	-
		CHECKED	-	REVISED	-
PLOT DATE	= 6/24/2025	DATE	-	REVISED	-

**STATE OF ILLINOIS
DEPARTMENT OF TRANSPORTATION**

ALIGNMENT, TIES & BENCHMARKS

SCALE: NTS SHEET 1 OF 3 SHEETS STA. TO STA.

F.A.I. RTE.	SECTION	COUNTY	TOTAL SHEETS	SHEET NO.
55	D6 CJS 2026	SANGAMON	19	7
CONTRACT NO. 72416				
ILLINOIS FED. AID PROJECT				

ALIGNMENT NAME: TORONTO RD R001

DESCRIPTION: I 55 RAMP

POINT TYPE	STATION	NORTHING	EASTING	RADIUS	LENGTH	TANGENT	DELTA/THETA	DIRECTION
POT	0+00.00	1108212.627	2443759.635					
PC	6+61.99	1108874.281	2443780.637					
PI	9+86.06	1109198.191	2443790.919	690.73	606.03	324.07	50°16'10.63"	RIGHT
PT	12+68.01	1109397.319	2444046.597					
PC	14+98.46	1109538.918	2444228.408					
PI	16+63.61	1109640.395	2444358.703	328.93	306.11	165.15	53°19'12.91"	LEFT
PT	18+04.57	1109805.507	2444355.151					
POT	20+39.09	1110039.973	2444350.106					

ALIGNMENT NAME: TORONTO DR R002

DESCRIPTION: I 55 RAMP

POINT TYPE	STATION	NORTHING	EASTING	RADIUS	LENGTH	TANGENT	DELTA/THETA	DIRECTION
POT	20+39.09	1110039.973	2444350.106					
PC	22+71.18	1110262.871	2444285.438					
PI	23+77.99	1110365.447	2444255.677	326.60	206.45	106.81	36°13'06.36"	LEFT
PT	24+77.63	1110430.618	2444171.059					
PC	27+10.68	1110572.823	2443986.420					
PI	30+32.75	1110769.344	2443731.258	690.13	602.67	322.07	50°02'06.47"	RIGHT
PT	33+13.36	1111091.140	2443717.983					
POT	42+62.98	1112039.954	2443678.844					

ALIGNMENT NAME: TORONTO DR R003

DESCRIPTION: I 55 RAMP

POINT TYPE	STATION	NORTHING	EASTING	RADIUS	LENGTH	TANGENT	DELTA/THETA	DIRECTION
POT	0+00.00	1111838.175	2443563.028					
PC	6+61.60	1111176.900	2443542.257					
PI	9+85.71	1110852.946	2443532.082	690.38	606.05	324.11	50°17'51.87"	RIGHT
PT	12+67.65	1110653.833	2443276.340					
PC	15+00.01	1110511.093	2443093.003					
PI	16+63.31	1110410.773	2442964.151	325.51	302.72	163.30	53°17'01.21"	LEFT
PT	18+02.72	1110247.509	2442967.533					
POT	20+38.80	1110011.484	2442972.423					

ALIGNMENT NAME: TORONTO RD R004

DESCRIPTION: I 55 RAMP

POINT TYPE	STATION	NORTHING	EASTING	RADIUS	LENGTH	TANGENT	DELTA/THETA	DIRECTION
POT	20+39.03	1110011.251	2442972.428					
PC	22+59.72	1109790.607	2442977.000					
PI	24+26.94	1109623.426	2442980.463	326.88	309.13	167.22	54°11'05.54"	LEFT
PT	25+68.85	1109528.405	2443118.059					
PC	28+00.45	1109396.798	2443308.634					
PI	31+45.41	1109200.778	2443592.482	691.75	639.98	344.96	53°00'28.31"	RIGHT
PT	34+40.44	1108856.116	2443606.711					
POT	43+90.35	1107907.012	2443645.891					

ALIGNMENT NAME: PALM RD R001

DESCRIPTION: I 55 RAMP

POINT TYPE	STATION	NORTHING	EASTING	RADIUS	LENGTH	TANGENT	DELTA/THETA	DIRECTION
PC	0+00.00	1101565.854	2443898.630					
PI	3+34.17	1101252.821	2443781.663	3162.42	665.87	334.17	12°03'50.78"	LEFT
PRC	6+65.87	1100922.255	2443732.704					
PI	8+97.81	1100692.820	2443698.724	691.89	447.59	231.94	37°03'52.73"	RIGHT
PT	11+13.46	1100530.221	2443533.325					
PC	13+46.03	1100367.181	2443367.477					
PI	15+07.04	1100254.306	2443252.659	323.95	298.85	161.01	52°51'23.67"	LEFT
PT	16+44.88	1100094.626	2443273.305					
POT	18+86.09	1099855.400	2443304.237					

ALIGNMENT NAME: PALM RD R002

DESCRIPTION: I 55 RAMP

POINT TYPE	STATION	NORTHING	EASTING	RADIUS	LENGTH	TANGENT	DELTA/THETA	DIRECTION
POT	18+85.53	1099855.400	2443304.237					
PC	21+09.85	1099677.125	2443440.383					
PI	21+50.20	1099645.050	2443464.878	305.88	80.25	40.36	15°01'57.70"	LEFT
PT	21+90.10	1099620.427	2443496.853					
PC	24+20.67	1099479.751	2443679.532					
PI	27+68.26	1099267.676	2443954.927	693.34	644.40	347.59	53°15'05.30"	RIGHT
PCC	30+65.07	1098920.125	2443949.769					
PI	35+45.92	1098439.323	2443942.632	2748.54	952.08	480.86	19°50'48.65"	RIGHT
PT	40+17.14	1097989.501	2443772.684					

ALIGNMENT NAME: PALM RD R003

DESCRIPTION: I 55 RAMP

POINT TYPE	STATION	NORTHING	EASTING	RADIUS	LENGTH	TANGENT	DELTA/THETA	DIRECTION
PC	0+00.00	1098096.409	2443939.812					
PI	3+32.65	1098406.033	2444061.430	2987.75	662.58	332.65	12°42'22.27"	LEFT
PT	6+62.58	1098734.825	2444111.967					
PC	7+07.08	1098778.811	2444118.728					
PI	10+32.21	1099100.164	2444168.121	678.19	606.35	325.13	51°13'34.62"	RIGHT
PT	13+13.43	1099262.902	2444449.589					
PC	15+71.87	1099392.260	2444673.323					
PI	20+30.21	1099621.676	2445070.117	474.73	729.03	458.34	87°59'16.62"	LEFT
PT	23+00.90	1100026.280	2444854.773					
POT	28+63.10	1100522.569	2444590.632					

MODEL: Untitled-1 [Sheet]
FILE NAME: c:\pwworkspace\isefcal\10175444\672416_sht_new_ATB.dgn

USER NAME = Christopher.Siefert	DESIGNED -	REVISED -
	DRAWN -	REVISED -
	CHECKED -	REVISED -
PLOT DATE = 6/24/2025	DATE -	REVISED -

**STATE OF ILLINOIS
DEPARTMENT OF TRANSPORTATION**

ALIGNMENT, TIES & BENCHMARKS

SCALE: NTS SHEET 2 OF 3 SHEETS STA. TO STA.

F.A.P. RTE.	SECTION	COUNTY	TOTAL SHEETS	SHEET NO.
55	D6 CJS 2026	SANGAMON	19	8
CONTRACT NO. 72416				
ILLINOIS FED. AID PROJECT				

ALIGNMENT NAME: PALM RD R004								
DESCRIPTION: I 55 RAMP								
POINT TYPE	STATION	NORTHING	EASTING	RADIUS	LENGTH	TANGENT	DELTA/THETA	DIRECTION
PC	0+00.00	1101108.426	2445123.744					
PI	2+02.23	1101004.114	2444950.488	1431.53	401.81	202.23	16°04'55.61"	LEFT
PT	4+01.81	1100855.889	2444812.909					
PC	6+62.99	1100664.459	2444635.229					
PI	7+64.50	1100590.059	2444566.172	698.33	201.61	101.51	16°32'28.58"	RIGHT
PT	8+64.60	1100538.398	2444478.791					
PC	8+64.60	1100538.399	2444478.793					
PI	12+32.86	1100350.984	2444161.790	343.94	563.74	368.26	93°54'41.22"	RIGHT
PCC	14+28.34	1100680.034	2443996.435					
PI	16+43.69	1100872.454	2443899.740	696.23	417.70	215.35	34°22'28.96"	RIGHT
PCC	18+46.04	1101085.865	2443928.572					
PI	20+29.10	1101267.270	2443953.081	2815.76	365.59	183.05	07°26'20.97"	RIGHT
PT	22+11.64	1101443.975	2444000.870					
PC	26+02.52	1101821.306	2444102.917					
PI	27+02.43	1101917.751	2444129.000	8876.26	199.81	99.91	01°17'23.18"	LEFT
PT	28+02.33	1102014.759	2444152.906					
ALIGNMENT NAME: PALM RD R005								
DESCRIPTION: I 55 RAMP								
POINT TYPE	STATIO	NORTHING	EASTING	RADIUS	LENGTH	TANGENT	DELTA/THETA	DIRECTION
POT	0+00.00	1099939.991	2443599.253					
PC	5+15.20	1100110.121	2444085.549					
PI	5+89.34	1100134.605	2444155.531	2038.80	148.22	74.14	04°09'55.16"	LEFT
PT	6+63.42	1100164.107	2444223.551					
PC	6+63.42	1100164.107	2444223.552					
PI	9+84.19	1100291.747	2444517.838	432.07	551.86	320.77	73°10'52.46"	RIGHT
PT	12+15.28	1100046.981	2444725.168					
PC	12+15.28	1100046.981	2444725.169					
PI	15+93.51	1099758.373	2444969.635	378.23	594.12	378.23	90°00'02.59"	RIGHT
PT	18+09.40	1099513.911	2444681.025					
PC	18+09.41	1099513.905	2444681.018					
PI	21+87.64	1099269.443	2444392.408	378.23	594.12	378.23	89°59'59.63"	RIGHT
PCC	24+03.53	1099558.052	2444147.945					
PI	25+70.83	1099685.706	2444039.817	685.64	328.17	167.29	27°25'26.50"	RIGHT
PT	27+31.71	1099848.815	2444002.635					
PC	29+72.79	1100083.864	2443949.052					
PI	33+30.58	1100432.706	2443869.530	2833.01	711.81	357.79	14°23'45.47"	RIGHT
PT	36+84.60	1100790.365	2443879.234					

MODEL: Untitled-2 [Sheet]
FILE NAME: c:\pwwork\w\1017544\1017544\1017544\1017544\1017544.dwg

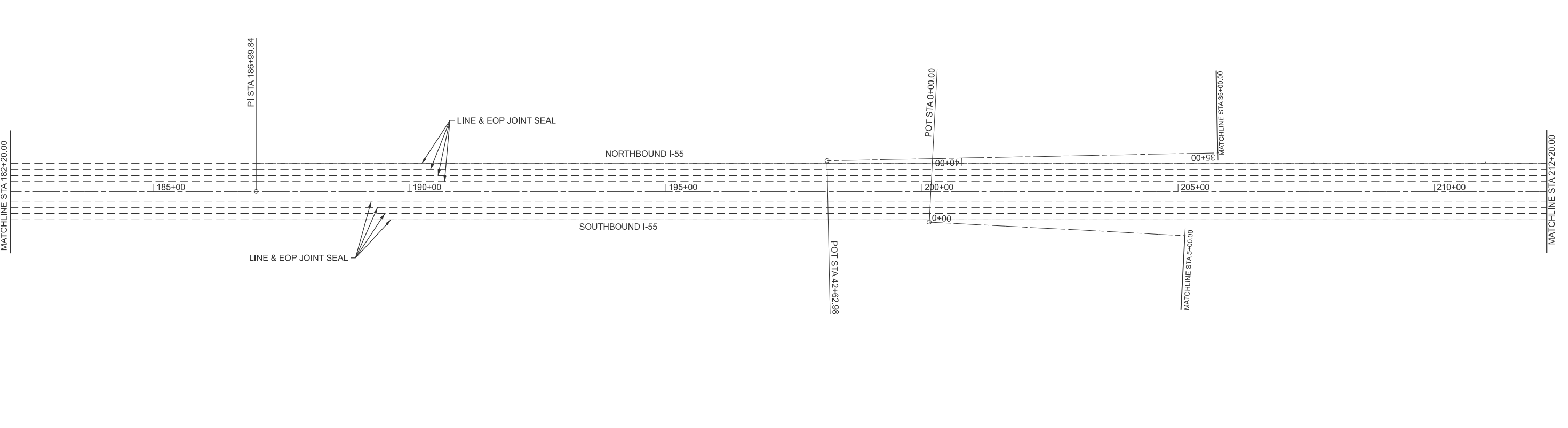
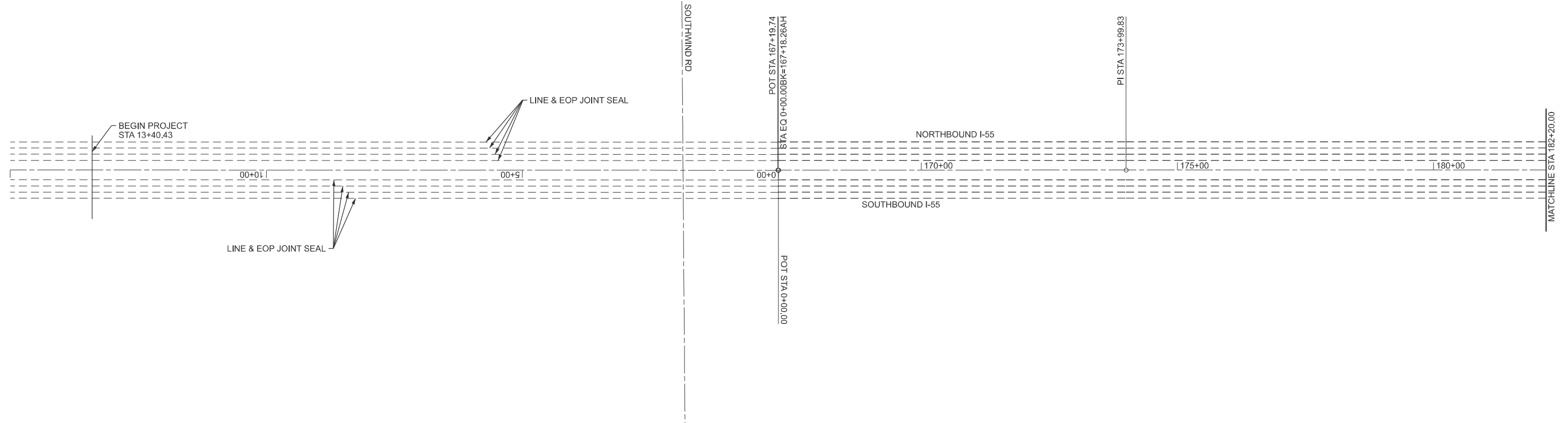
USER NAME = Christopher.Siefert	DESIGNED -	REVISED -
	DRAWN -	REVISED -
	CHECKED -	REVISED -
PLOT DATE = 6/24/2025	DATE -	REVISED -

**STATE OF ILLINOIS
DEPARTMENT OF TRANSPORTATION**

ALIGNMENT, TIES & BENCHMARKS

SCALE: NTS SHEET 3 OF 3 SHEETS STA. TO STA.

F.A.I. RTE.	SECTION	COUNTY	TOTAL SHEETS	SHEET NO.
55	D6 CJS 2026	SANGAMON	19	9
CONTRACT NO. 72416				
ILLINOIS FED. AID PROJECT				



MODEL: Unnamed Plan - I-55 (Sheet)
 FILE NAME: c:\p\work\pwwork\is5e\contract\1017544\ID672416_sht_new_plan.dgn

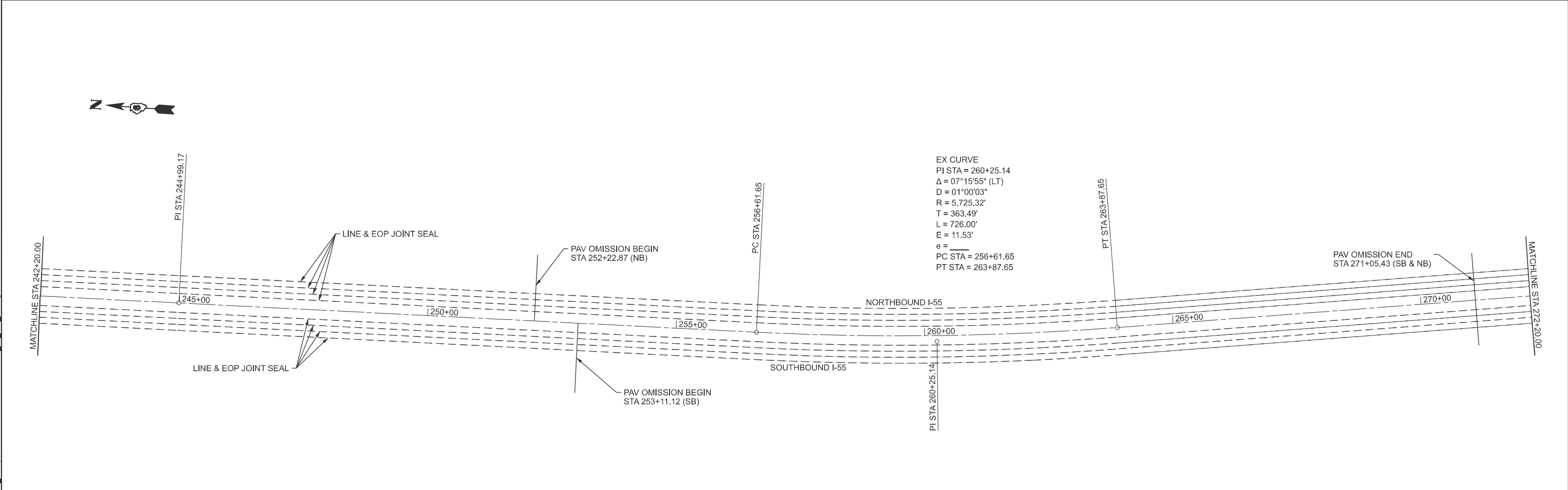
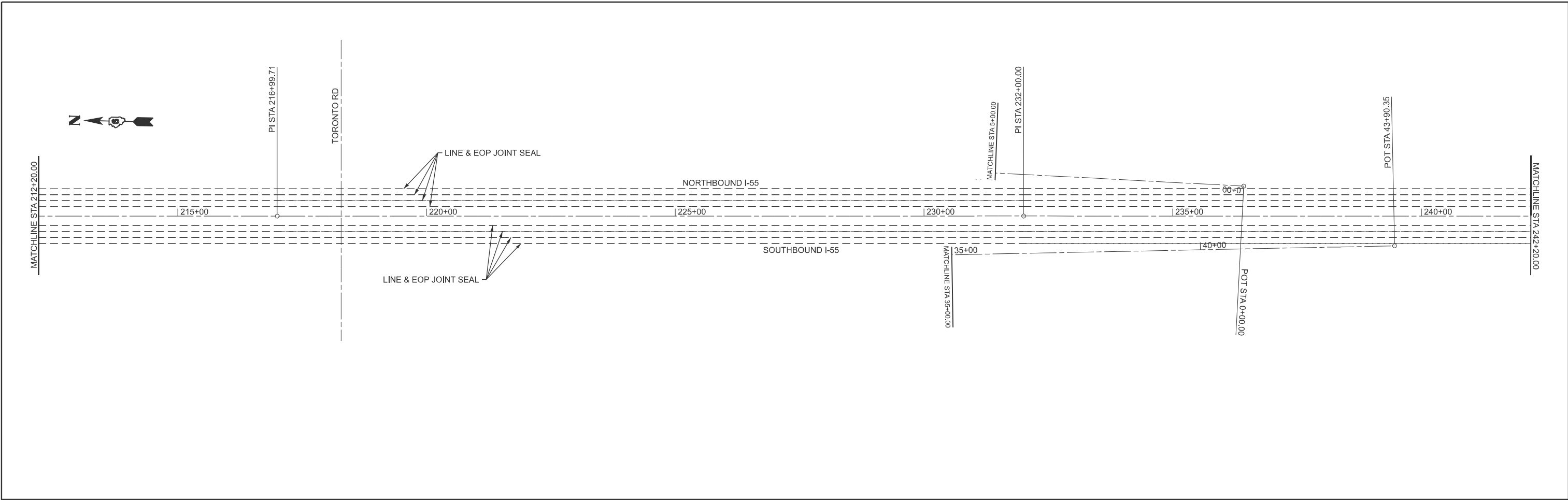
USER NAME = Christopher.Siefert	DESIGNED -	REVISED -
	DRAWN -	REVISED -
	CHECKED -	REVISED -
PLOT DATE = 6/24/2025	DATE -	REVISED -

STATE OF ILLINOIS
DEPARTMENT OF TRANSPORTATION

PLAN SHEETS
MAINLINE I-55

SCALE: 1"=100' SHEET 1 OF 9 SHEETS STA. TO STA.

F.A.I. RTE.	SECTION	COUNTY	TOTAL SHEETS	SHEET NO.
55	D6 CJS 2026	SANGAMON	19	10
CONTRACT NO. 72416				
ILLINOIS FED. AID PROJECT				



MODEL: Unnamed Plan - I-57 (Sheet)
 FILE NAME: c:\pwworking\autodesk\external\10176444\I-57\sheet\plan.dgn

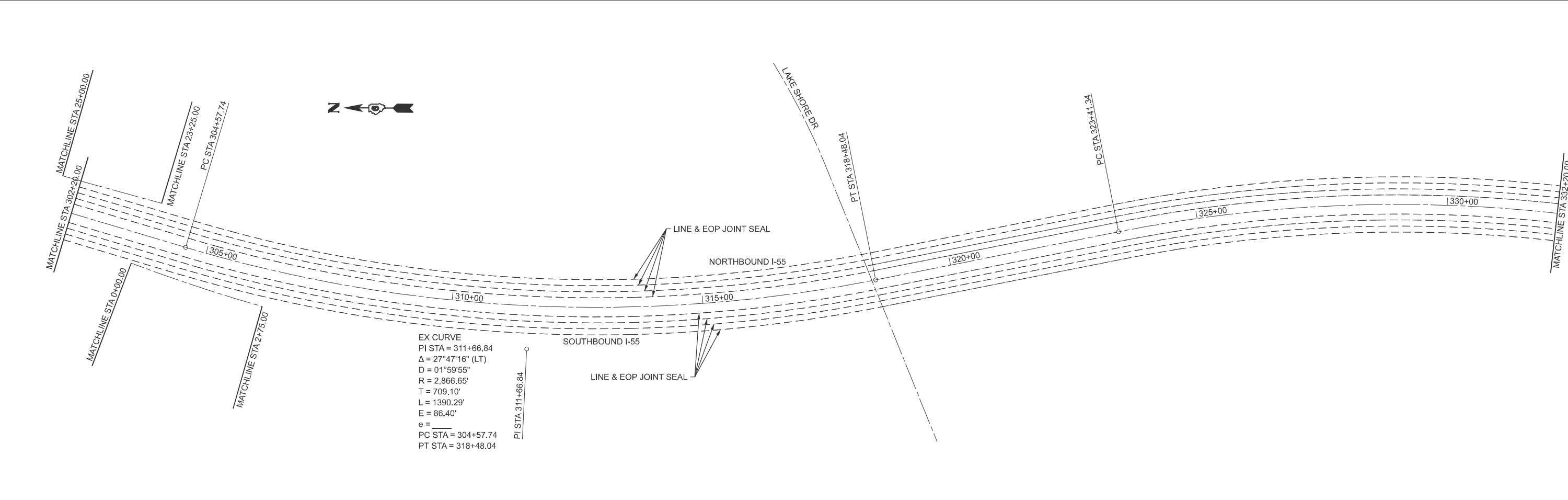
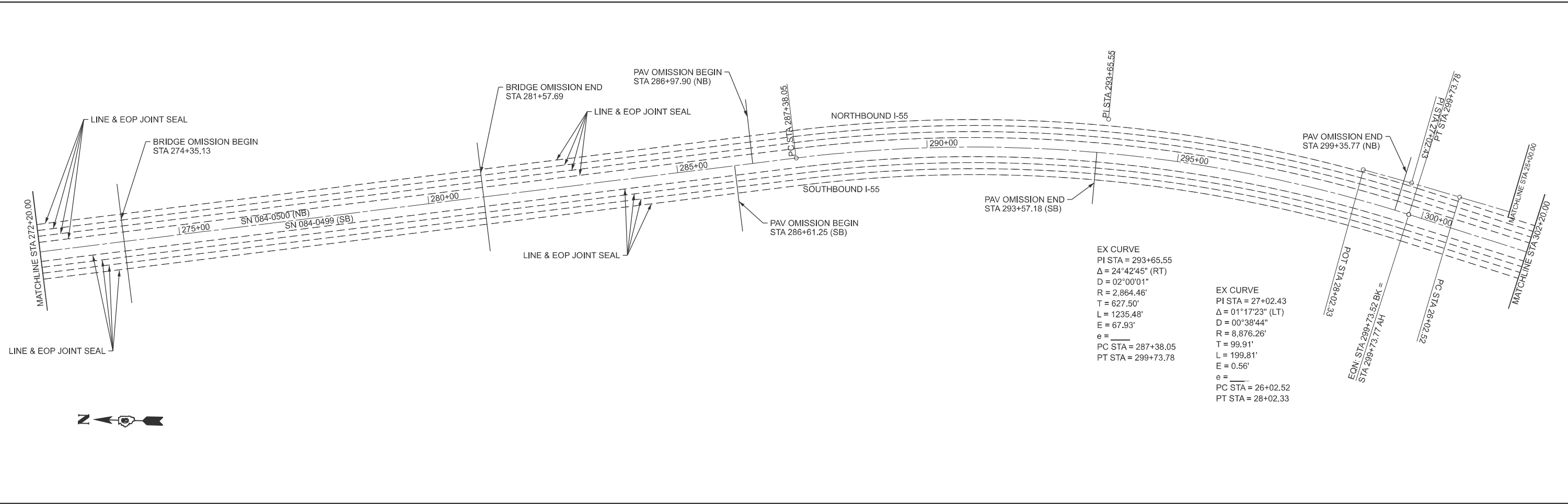
USER NAME = Christopher.Siefert	DESIGNED -	REVISED -
	DRAWN -	REVISED -
	CHECKED -	REVISED -
PLOT DATE = 6/24/2025	DATE -	REVISED -

**STATE OF ILLINOIS
DEPARTMENT OF TRANSPORTATION**

**PLAN SHEETS
MAINLINE I-55**

SCALE: 1"=100' SHEET 2 OF 9 SHEETS STA. TO STA.

F.A.I. RTE.	SECTION	COUNTY	TOTAL SHEETS	SHEET NO.
55	D6 CJS 2026	SANGAMON	19	11
CONTRACT NO. 72416				
ILLINOIS FED. AID PROJECT				



MODEL: Unnamed Plan - I-55 (Sheet)
 FILE NAME: c:\pwworking\isefert\cal\10178444\I-55\plan.dgn

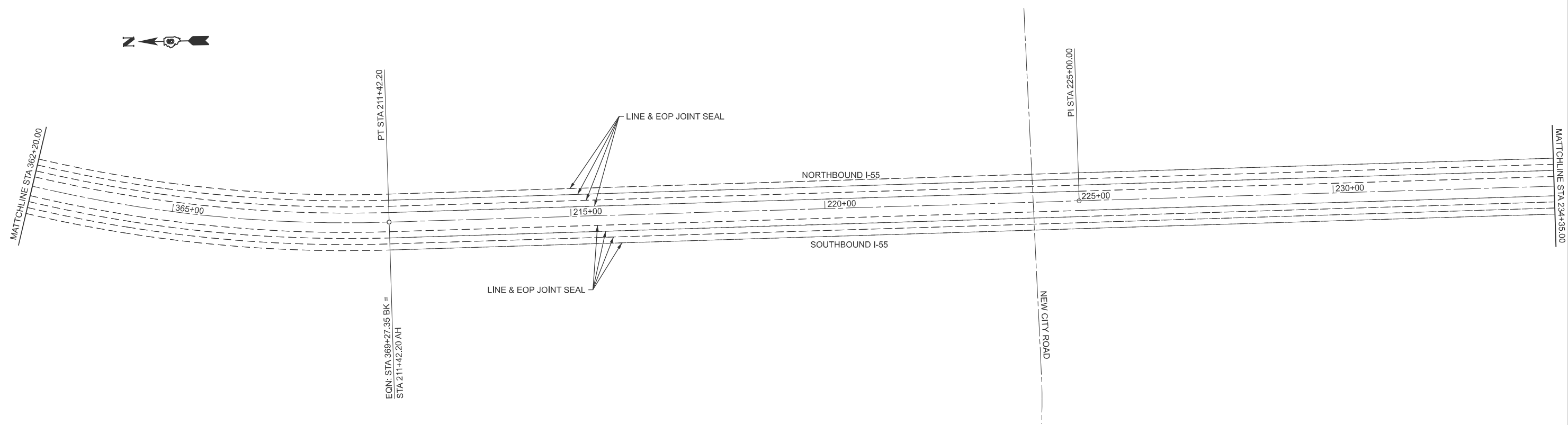
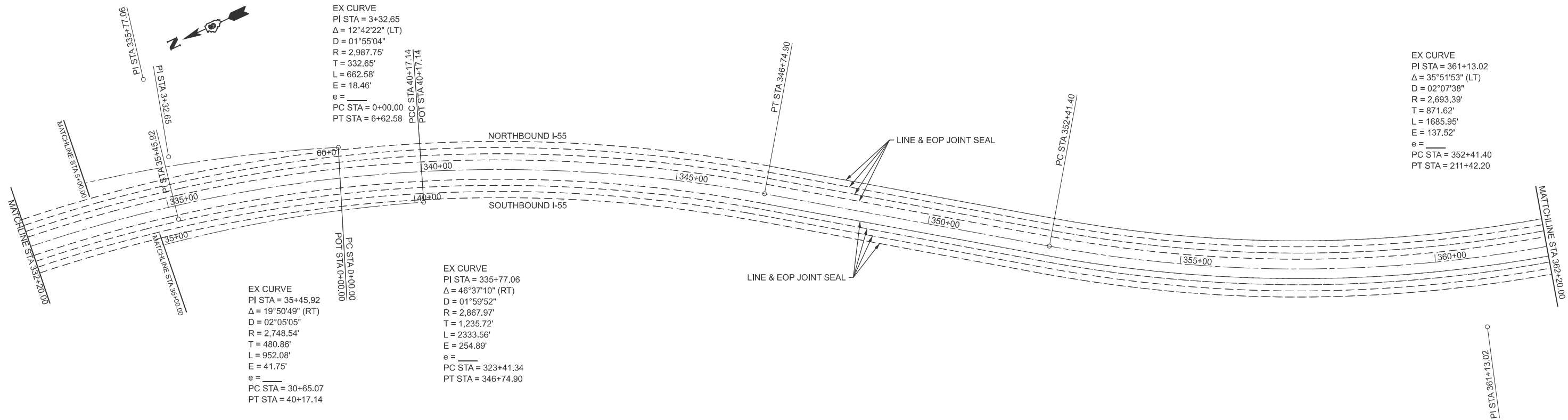
USER NAME = Christopher.Siefert	DESIGNED -	REVISED -
	DRAWN -	REVISED -
	CHECKED -	REVISED -
PLOT DATE = 6/24/2025	DATE -	REVISED -

**STATE OF ILLINOIS
 DEPARTMENT OF TRANSPORTATION**

**PLAN SHEETS
 MAINLINE I-55**

SCALE: 1"=100' SHEET 3 OF 9 SHEETS STA. TO STA.

F.A.I. RTE.	SECTION	COUNTY	TOTAL SHEETS	SHEET NO.
55	D6 CJS 2026	SANGAMON	19	12
CONTRACT NO. 72416				
ILLINOIS FED. AID PROJECT				



MODEL: Unnamed Plan - L&I [Sheet]
 FILE NAME: c:\p\work\pwwork\isef\ercald\1017644\ID672416_sht_new_plan.dgn

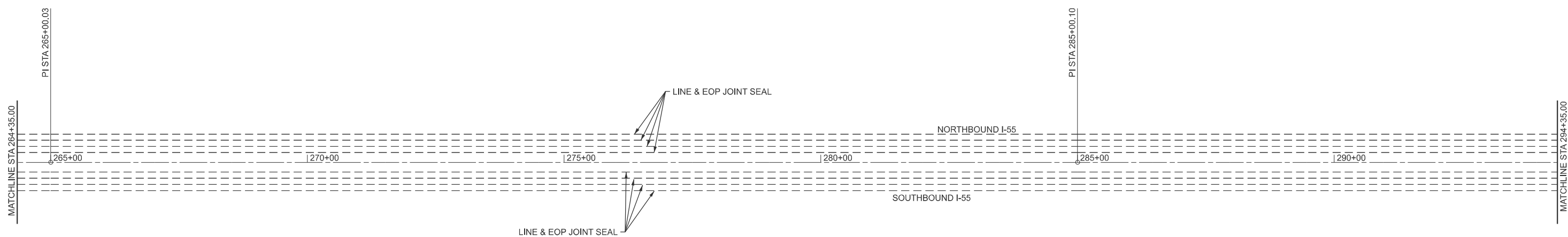
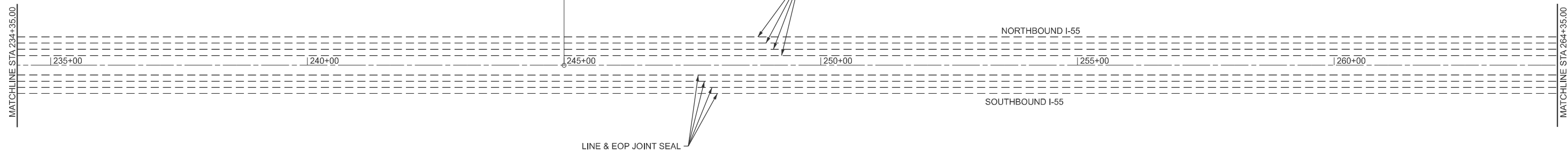
USER NAME = Christopher.Siefert	DESIGNED -	REVISED -
	DRAWN -	REVISED -
	CHECKED -	REVISED -
PLOT DATE = 6/24/2025	DATE -	REVISED -

**STATE OF ILLINOIS
 DEPARTMENT OF TRANSPORTATION**

**PLAN SHEETS
 MAINLINE I-55**

SCALE: 1"=100' SHEET 4 OF 9 SHEETS STA. TO STA.

F.A.I. RTE.	SECTION	COUNTY	TOTAL SHEETS	SHEET NO.
55	D6 CJS 2026	SANGAMON	19	13
CONTRACT NO. 72416				
ILLINOIS FED. AID PROJECT				



MODEL: Unnamed Plan - I-55 [Sheet]
 FILE NAME: c:\p\work\p\wis\is5e\contract\1017544\ID672416_sht_new_plan.dgn

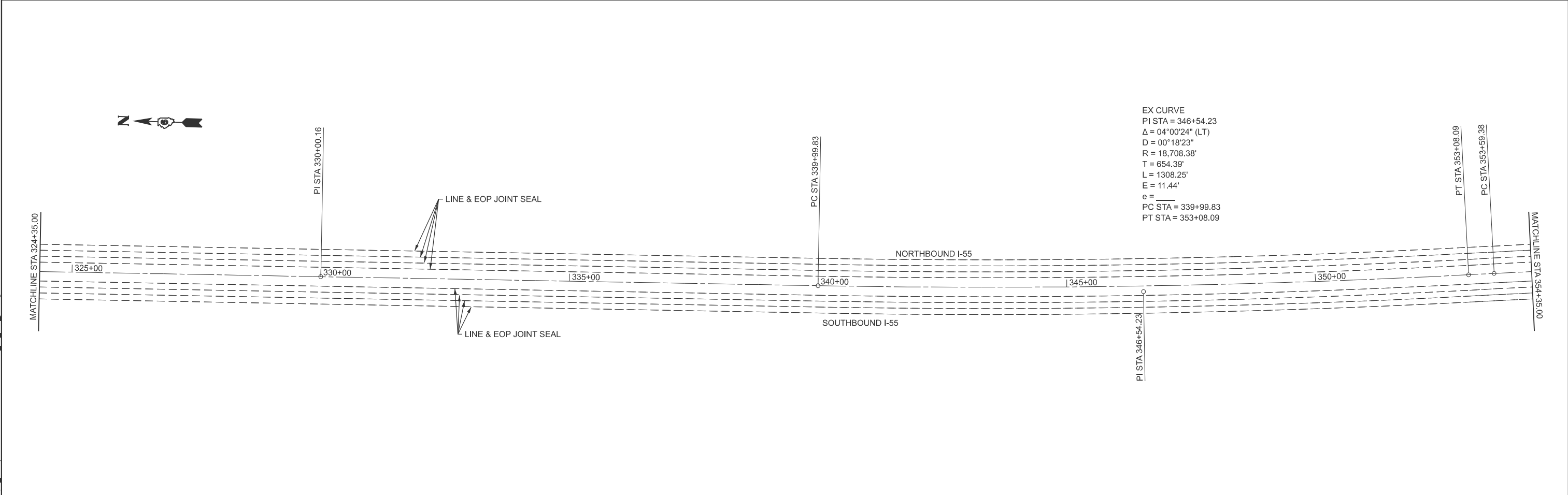
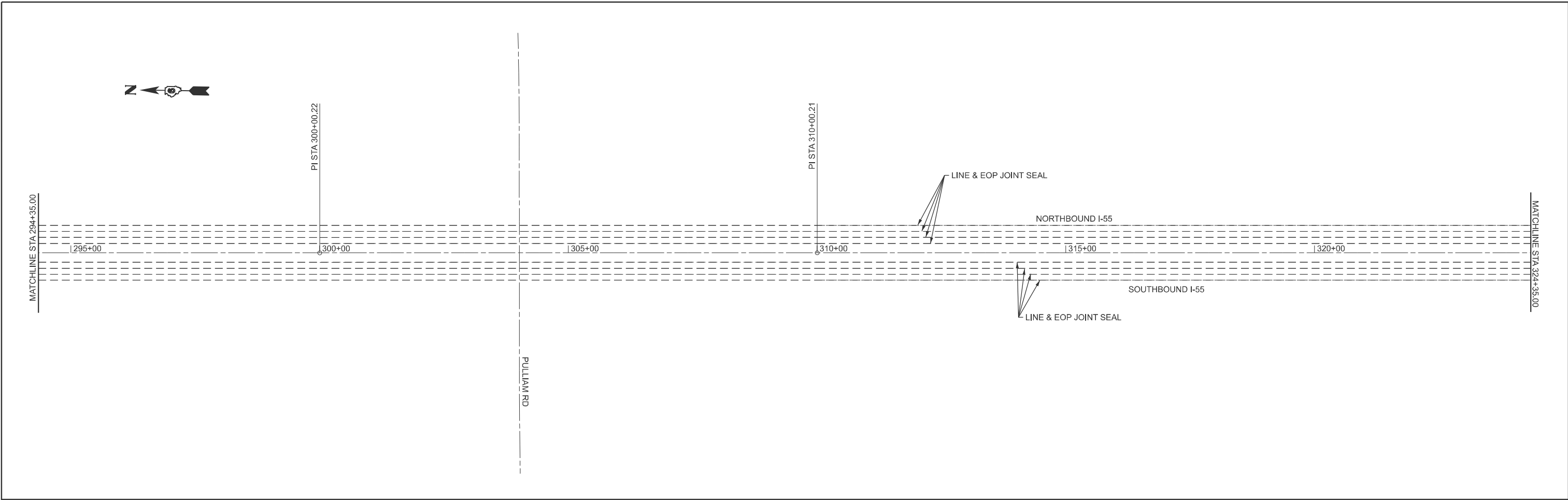
USER NAME = Christopher.Siefert	DESIGNED -	REVISED -
	DRAWN -	REVISED -
	CHECKED -	REVISED -
PLOT DATE = 6/24/2025	DATE -	REVISED -

**STATE OF ILLINOIS
 DEPARTMENT OF TRANSPORTATION**

**PLAN SHEETS
 MAINLINE I-55**

SCALE: 1"=100' SHEET 5 OF 9 SHEETS STA. TO STA.

F.A.I. RTE.	SECTION	COUNTY	TOTAL SHEETS	SHEET NO.
55	D6 CJS 2026	SANGAMON	19	14
CONTRACT NO. 72416				
ILLINOIS FED. AID PROJECT				



MODEL: Unnamed Plan - I-65 (Sheet)
 FILE NAME: c:\p\work\p\work\isef\contract\1017644\I65\sheet\plan.dgn

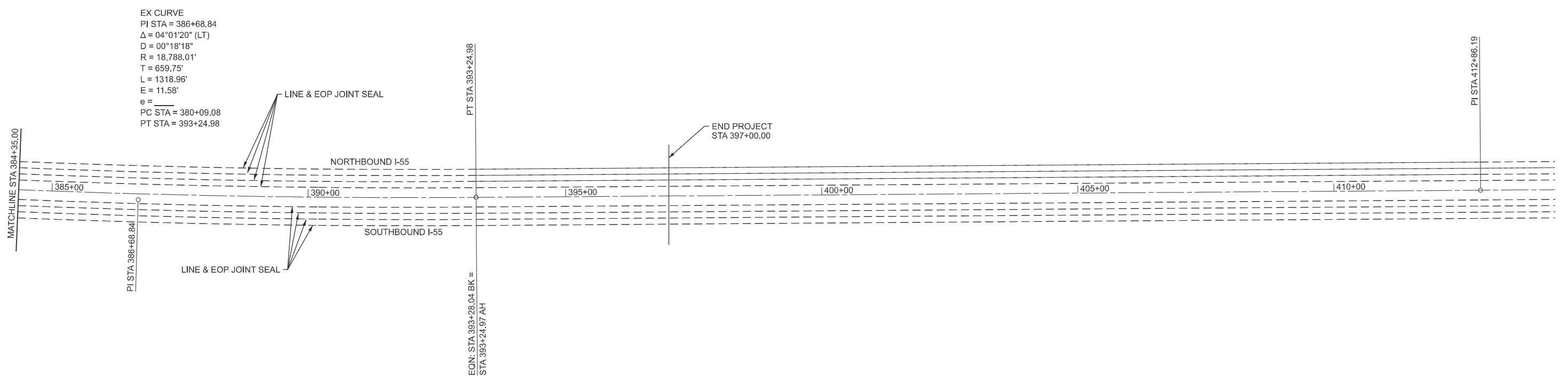
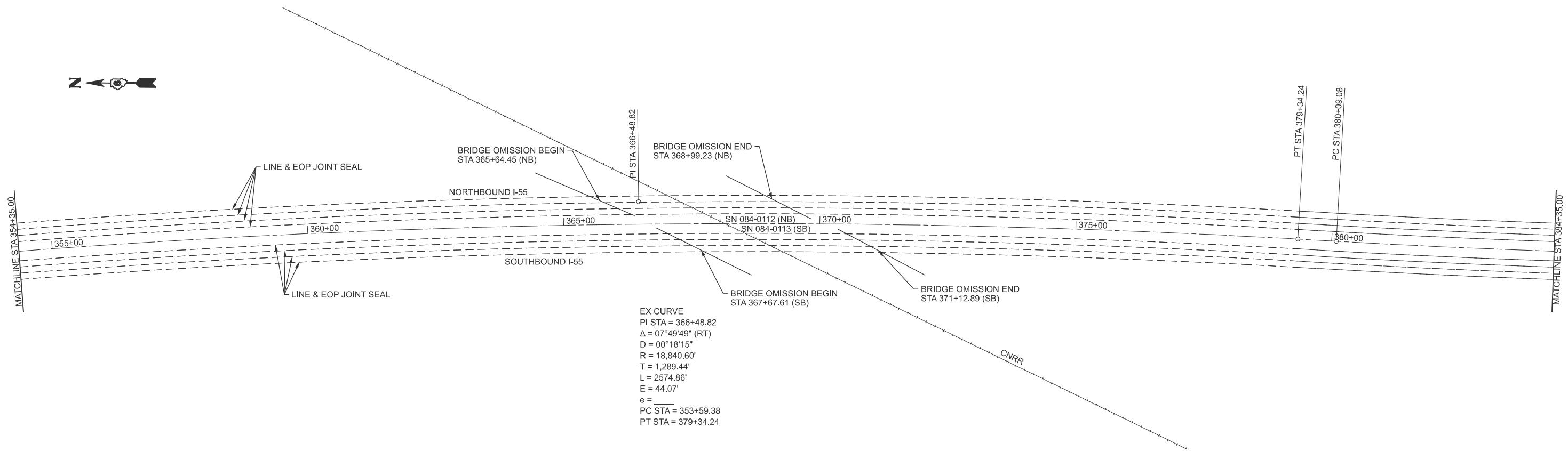
USER NAME = Christopher.Siefert	DESIGNED -	REVISED -
	DRAWN -	REVISED -
	CHECKED -	REVISED -
PLOT DATE = 6/24/2025	DATE -	REVISED -

**STATE OF ILLINOIS
DEPARTMENT OF TRANSPORTATION**

**PLAN SHEETS
MAINLINE I-55**

SCALE: 1"=100' SHEET 6 OF 9 SHEETS STA. TO STA.

F.A.I. RTE.	SECTION	COUNTY	TOTAL SHEETS	SHEET NO.
55	D6 CJS 2026	SANGAMON	19	15
CONTRACT NO. 72416				
ILLINOIS FED. AID PROJECT				



MODEL: Unnamed Plan - L&T (Sheet)
 FILE NAME: c:\p\work\wis\0156\forcal\1017544\ID672416_sht_new_plan.dgn

USER NAME = Christopher.Siefert	DESIGNED -	REVISED -
	DRAWN -	REVISED -
	CHECKED -	REVISED -
PLOT DATE = 6/24/2025	DATE -	REVISED -

**STATE OF ILLINOIS
 DEPARTMENT OF TRANSPORTATION**

**PLAN SHEETS
 MAINLINE I-55**

SCALE: 1"=100' SHEET 7 OF 9 SHEETS STA. TO STA.

F.A.I. RTE.	SECTION	COUNTY	TOTAL SHEETS	SHEET NO.
55	D6 CJS 2026	SANGAMON	19	16
CONTRACT NO. 72416				
ILLINOIS FED. AID PROJECT				

EX CURVE
 PI STA = 23+77.99
 $\Delta = 36^\circ 13' 06''$ (LT)
 $D = 17^\circ 32' 36''$
 $R = 326.60'$
 $T = 106.81'$
 $L = 206.45'$
 $E = 17.02'$
 $e =$
 PC STA = 22+71.18
 PT STA = 24+77.63

EX CURVE
 PI STA = 16+63.61
 $\Delta = 53^\circ 19' 13''$ (LT)
 $D = 17^\circ 25' 07''$
 $R = 328.93'$
 $T = 165.15'$
 $L = 306.11'$
 $E = 39.13'$
 $e =$
 PC STA = 14+98.46
 PT STA = 18+04.57

EX CURVE
 PI STA = 9+86.06
 $\Delta = 50^\circ 16' 11''$ (RT)
 $D = 08^\circ 17' 42''$
 $R = 690.73'$
 $T = 324.07'$
 $L = 606.03'$
 $E = 72.25'$
 $e =$
 PC STA = 6+61.99
 PT STA = 12+68.01

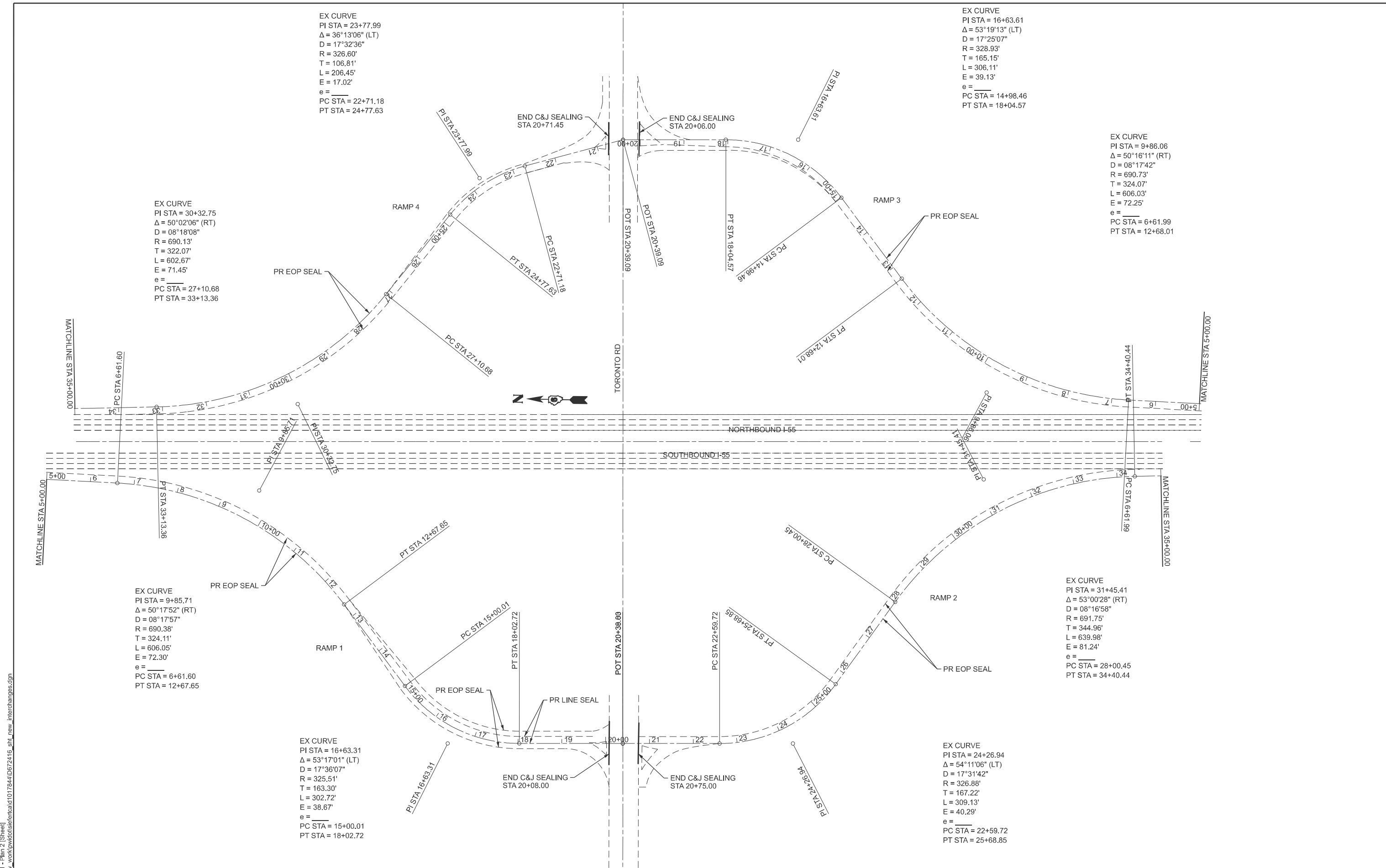
EX CURVE
 PI STA = 30+32.75
 $\Delta = 50^\circ 02' 06''$ (RT)
 $D = 08^\circ 18' 08''$
 $R = 690.13'$
 $T = 322.07'$
 $L = 602.67'$
 $E = 71.45'$
 $e =$
 PC STA = 27+10.68
 PT STA = 33+13.36

EX CURVE
 PI STA = 9+85.71
 $\Delta = 50^\circ 17' 52''$ (RT)
 $D = 08^\circ 17' 57''$
 $R = 690.38'$
 $T = 324.11'$
 $L = 606.05'$
 $E = 72.30'$
 $e =$
 PC STA = 6+61.60
 PT STA = 12+67.65

EX CURVE
 PI STA = 16+63.31
 $\Delta = 53^\circ 17' 01''$ (LT)
 $D = 17^\circ 36' 07''$
 $R = 325.51'$
 $T = 163.30'$
 $L = 302.72'$
 $E = 38.67'$
 $e =$
 PC STA = 15+00.01
 PT STA = 18+02.72

EX CURVE
 PI STA = 24+26.94
 $\Delta = 54^\circ 11' 06''$ (LT)
 $D = 17^\circ 31' 42''$
 $R = 326.88'$
 $T = 167.22'$
 $L = 309.13'$
 $E = 40.29'$
 $e =$
 PC STA = 22+59.72
 PT STA = 25+68.85

EX CURVE
 PI STA = 31+45.41
 $\Delta = 53^\circ 00' 28''$ (RT)
 $D = 08^\circ 16' 58''$
 $R = 691.75'$
 $T = 344.96'$
 $L = 639.98'$
 $E = 81.24'$
 $e =$
 PC STA = 28+00.45
 PT STA = 34+40.44



MODEL: I55_E501 - Plan 2 (Sheet)
 FILE NAME: c:\pwworking\dwg\intercal\1017644\I55E501.dwg

USER NAME = Christopher.Siefert	DESIGNED -	REVISED -
	DRAWN -	REVISED -
	CHECKED -	REVISED -
PLOT DATE = 6/24/2025	DATE -	REVISED -

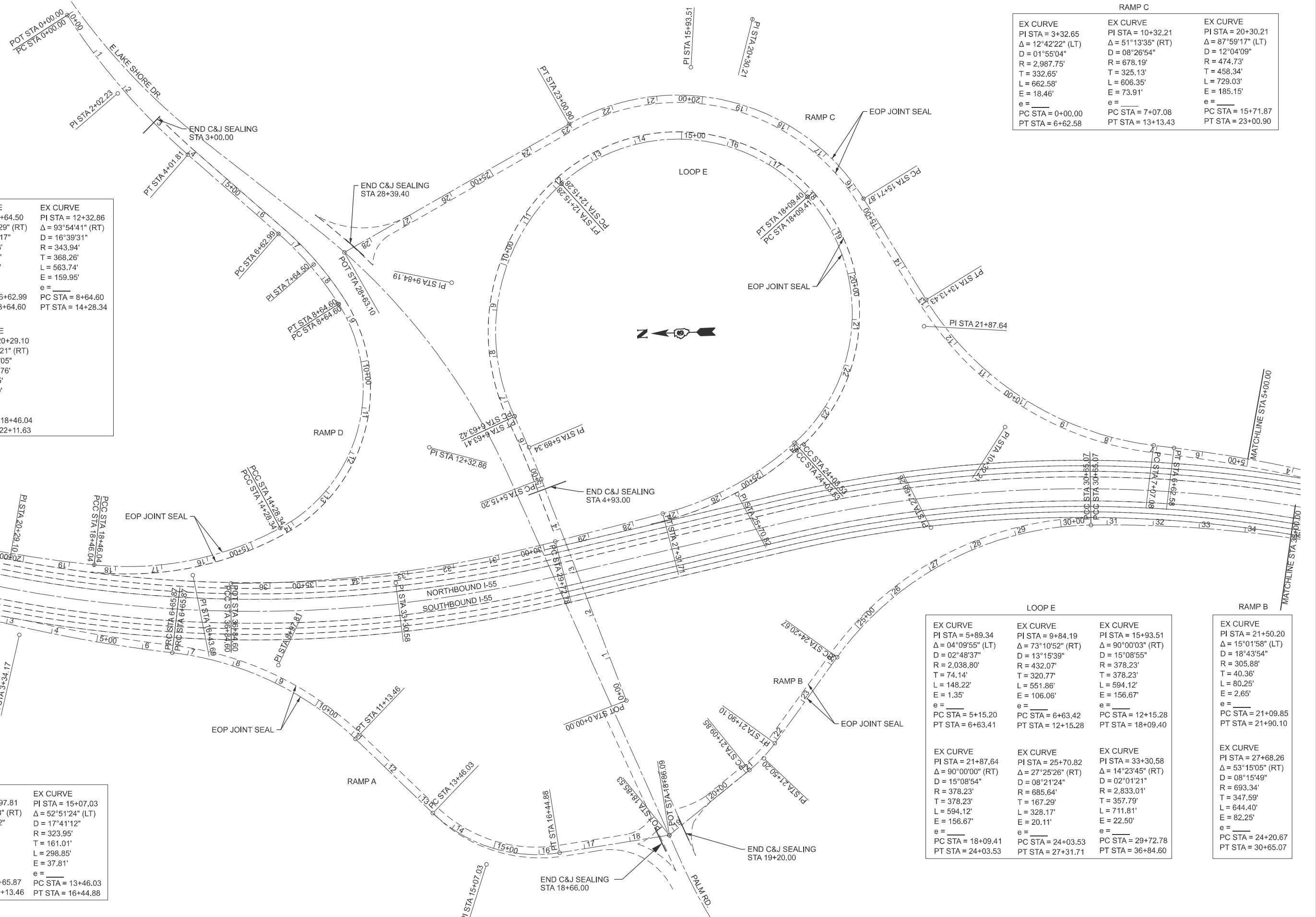
**STATE OF ILLINOIS
 DEPARTMENT OF TRANSPORTATION**

**PLAN SHEETS
 TORONTO RD INTERCHANGE**

SCALE: 1"=100' SHEET 8 OF 9 SHEETS STA. TO STA.

F.A.I. RTE.	SECTION	COUNTY	TOTAL SHEETS	SHEET NO.
55	D6 CJS 20256	SANGAMON	19	17
CONTRACT NO. 72416				
ILLINOIS FED. AID PROJECT				

MODEL: Untitled (Sheet)
FILE NAME: c:\pik\work\wilson\isef\cal10176444\ID672416_sht_new_interchanges.dgn



RAMP C		
EX CURVE	EX CURVE	EX CURVE
PI STA = 3+32.65	PI STA = 10+32.21	PI STA = 20+30.21
Δ = 12°42'22" (LT)	Δ = 51°13'35" (RT)	Δ = 87°59'17" (LT)
D = 01°55'04"	D = 08°26'54"	D = 12°04'09"
R = 2,987.75'	R = 678.19'	R = 474.73'
T = 332.65'	T = 325.13'	T = 458.34'
L = 662.58'	L = 606.35'	L = 729.03'
E = 18.46'	E = 73.91'	E = 185.15'
e =	e =	e =
PC STA = 0+00.00	PC STA = 7+07.08	PC STA = 15+71.87
PT STA = 6+62.58	PT STA = 13+13.43	PT STA = 23+00.90

RAMP D		
EX CURVE	EX CURVE	EX CURVE
PI STA = 2+02.23	PI STA = 7+64.50	PI STA = 12+32.86
Δ = 16°04'56" (LT)	Δ = 16°32'29" (RT)	Δ = 93°54'41" (RT)
D = 04°00'09"	D = 08°12'17"	D = 16°39'31"
R = 1,431.53'	R = 698.33'	R = 343.94'
T = 202.23'	T = 101.51'	T = 368.26'
L = 401.81'	L = 201.61'	L = 563.74'
E = 14.21'	E = 7.34'	E = 159.95'
e =	e =	e =
PC STA = 0+00.00	PC STA = 6+62.99	PC STA = 8+64.60
PT STA = 4+01.81	PT STA = 8+64.60	PT STA = 14+28.34

EX CURVE	
PI STA = 16+43.69	PI STA = 20+29.10
Δ = 34°22'29" (RT)	Δ = 07°26'21" (RT)
D = 08°13'46"	D = 02°02'05"
R = 696.23'	R = 2,815.76'
T = 215.35'	T = 183.05'
L = 417.70'	L = 365.59'
E = 32.54'	E = 5.94'
e =	e =
PC STA = 14+28.34	PC STA = 18+46.04
PT STA = 18+46.04	PT STA = 22+11.63

LOOP E		
EX CURVE	EX CURVE	EX CURVE
PI STA = 5+89.34	PI STA = 9+84.19	PI STA = 15+93.51
Δ = 04°09'55" (LT)	Δ = 73°10'52" (RT)	Δ = 90°00'03" (RT)
D = 02°48'37"	D = 13°15'39"	D = 15°08'55"
R = 2,038.80'	R = 432.07'	R = 378.23'
T = 74.14'	T = 320.77'	T = 378.23'
L = 148.22'	L = 551.86'	L = 594.12'
E = 1.35'	E = 106.06'	E = 156.67'
e =	e =	e =
PC STA = 5+15.20	PC STA = 6+63.42	PC STA = 12+15.28
PT STA = 6+63.41	PT STA = 12+15.28	PT STA = 18+09.40

RAMP B	
EX CURVE	EX CURVE
PI STA = 21+50.20	PI STA = 21+50.20
Δ = 15°01'58" (LT)	Δ = 15°01'58" (LT)
D = 18°43'54"	D = 18°43'54"
R = 305.88'	R = 305.88'
T = 40.36'	T = 40.36'
L = 80.25'	L = 80.25'
E = 2.65'	E = 2.65'
e =	e =
PC STA = 21+09.85	PC STA = 21+09.85
PT STA = 21+90.10	PT STA = 21+90.10

RAMP A		
EX CURVE	EX CURVE	EX CURVE
PI STA = 3+34.17	PI STA = 8+97.81	PI STA = 15+07.03
Δ = 12°03'51" (LT)	Δ = 37°03'53" (RT)	Δ = 52°51'24" (LT)
D = 01°48'42"	D = 08°16'52"	D = 17°41'12"
R = 3,162.41'	R = 691.89'	R = 323.95'
T = 334.17'	T = 231.94'	T = 161.01'
L = 665.87'	L = 447.59'	L = 298.85'
E = 17.61'	E = 37.84'	E = 37.81'
e =	e =	e =
PC STA = 0+00.00	PC STA = 6+65.87	PC STA = 13+46.03
PT STA = 6+65.87	PT STA = 11+13.46	PT STA = 16+44.88

EX CURVE		
PI STA = 21+87.64	PI STA = 25+70.82	PI STA = 33+30.58
Δ = 90°00'00" (RT)	Δ = 27°25'26" (RT)	Δ = 14°23'45" (RT)
D = 15°08'54"	D = 08°21'24"	D = 02°01'21"
R = 378.23'	R = 685.64'	R = 2,833.01'
T = 378.23'	T = 167.29'	T = 357.79'
L = 594.12'	L = 328.17'	L = 711.81'
E = 156.67'	E = 20.11'	E = 22.50'
e =	e =	e =
PC STA = 18+09.41	PC STA = 24+03.53	PC STA = 29+72.78
PT STA = 24+03.53	PT STA = 27+31.71	PT STA = 36+84.60

USER NAME = Christopher.Siefert	DESIGNED -	REvised -
	DRAWN -	REvised -
	CHECKED -	REvised -
PLOT DATE = 6/24/2025	DATE -	REvised -

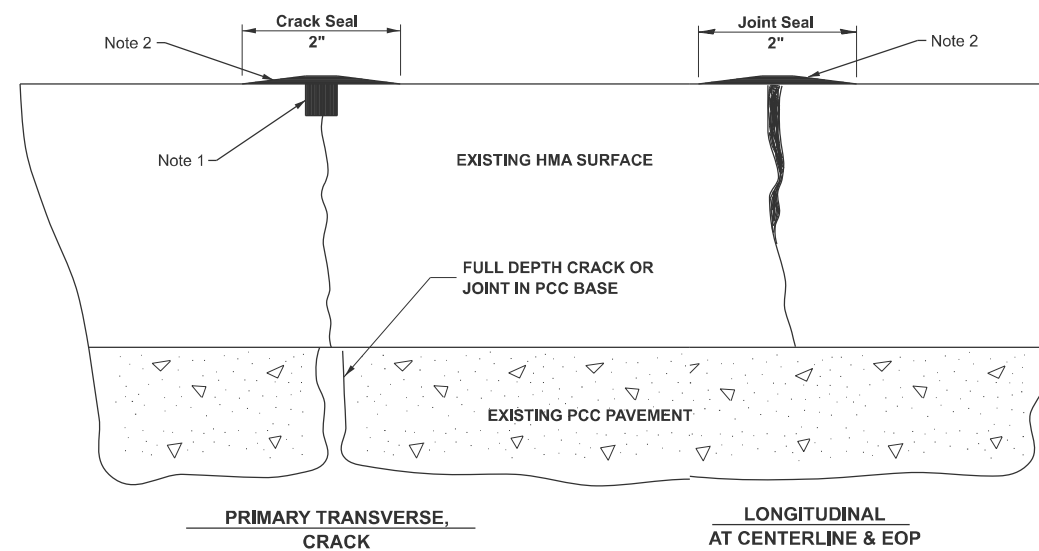
STATE OF ILLINOIS
DEPARTMENT OF TRANSPORTATION

PLAN SHEETS
LAKE SHORE DR INTERCHANGE

SCALE: SHEET 9 OF 9 SHEETS STA. TO STA.

F.A.I. RTE.	SECTION	COUNTY	TOTAL SHEETS	SHEET NO.
55	D6 CJS 2026	SANGAMON	19	18
CONTRACT NO. 72416				
ILLINOIS FED. AID PROJECT				

CRACK AND JOINT SEALING DETAILS



NOTES

- ① ROUTE OR SAW 3/4" WIDE BY VARIABLE DEPTH. DEPTH BASED UPON CRACK OR JOINT DEPTH AND 3/4" MINIMUM SEALER OVER BACKER ROD.
- ② THE "BAND AID" WIDTH SHALL BE REDUCED OR ELIMINATED IN AREAS ADJACENT TO EXISTING PAVEMENT MARKINGS.

MODEL: details [Sheet]
 FILE NAME: c:\p\work\pav\seal\seal\1017544\ID672416_sht_details.dgn

USER NAME = Iryna.Tsymbalyuk	DESIGNED -	REVISED -
	DRAWN -	REVISED -
	CHECKED -	REVISED -
PLOT DATE = 6/10/2025	DATE -	REVISED -

STATE OF ILLINOIS
DEPARTMENT OF TRANSPORTATION

DETAILS

SCALE: NTS SHEET 1 OF 1 SHEETS STA. TO STA.

F.A.I. RTE.	SECTION	COUNTY	TOTAL SHEETS	SHEET NO.
55	D6 CJS 2026	SANGAMON	19	19
CONTRACT NO. 72416				
ILLINOIS FED. AID PROJECT				