

09-19-2025 LETTING ITEM 041

STATE OF ILLINOIS
DEPARTMENT OF TRANSPORTATION

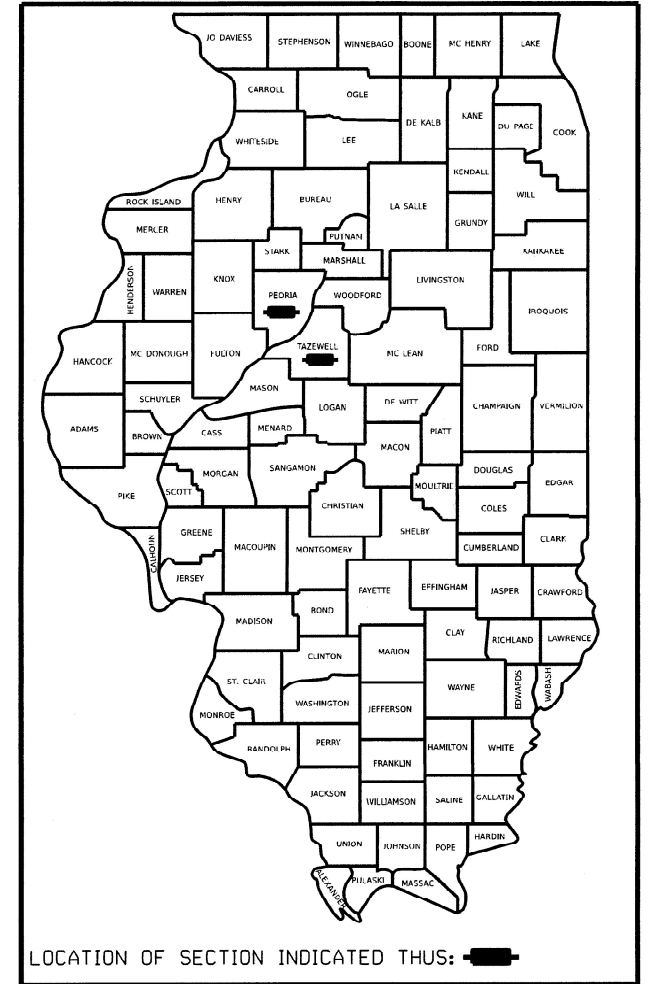
F.A.I. RTE.	SECTION	COUNTY	TOTAL SHEETS	SHEET NO.
74	72[(8-9)L-1,(10)L];(90-11)L	PEORIA,TAZEWELL	24	1
		ILLINOIS	CONTRACT NO. 68K25	

D-94-060-25

INDEX OF SHEETS:
SEE SHEET 2 FOR INDEX OF SHEETS

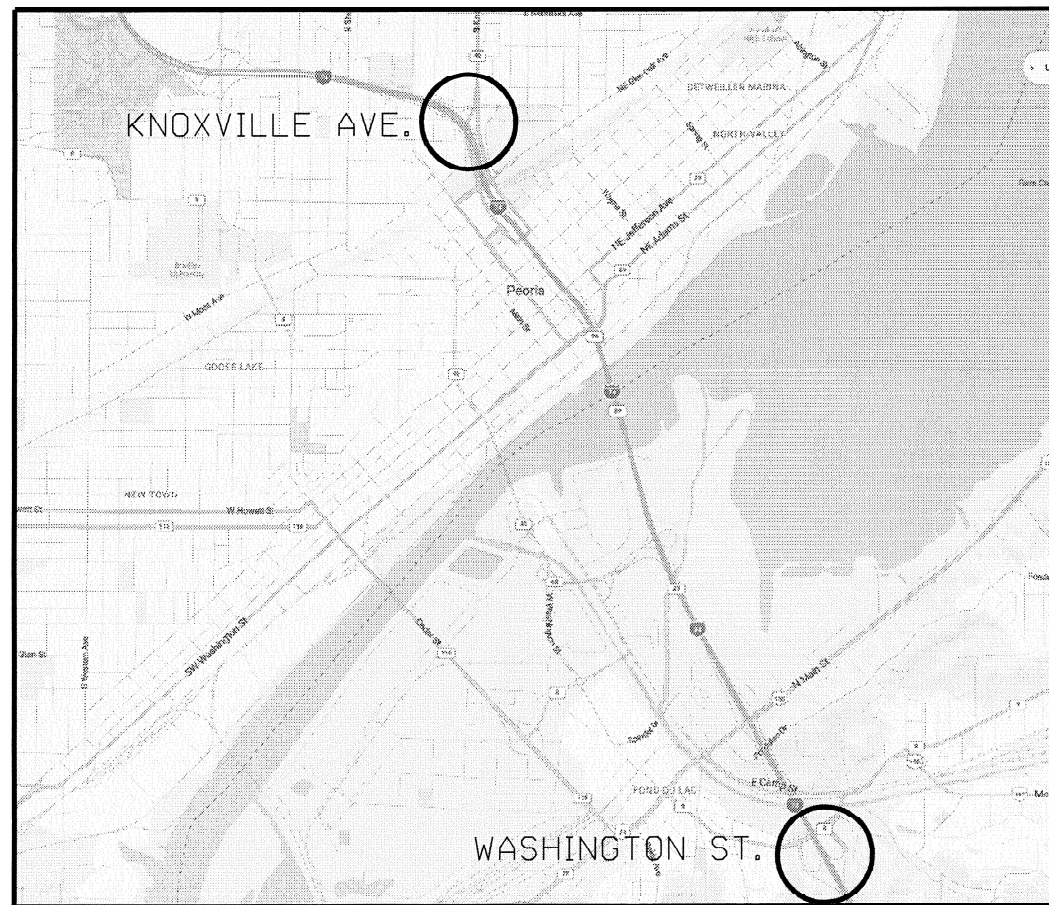
PROPOSED
HIGHWAY PLANS

FAI ROUTE 74 (I-74)
SECTION 72[(8-9)L-1,(10)L];(90-11)L
PROJECT NO. CAR-S75P(806)
PEORIA-TAZEWELL COUNTIES
C-94-074-25



HIGHWAY STANDARDS:
SEE SHEET 2 FOR A LIST OF
APPLICABLE HIGHWAY STANDARDS

PROJECT DESCRIPTION:
INSTALLATION OF LED LUMINAIRES
ALONG I-74 ON EXISTING LIGHT
TOWERS, LIGHT POLES, AND INSIDE
TUNNELS FROM FROM KNOXVILLE AVE.
INTERCHANGE IN PEORIA TO
WASHINGTON STREET INTERCHANGE IN
EAST PEORIA



J.U.L.I.E.
JOINT UTILITY LOCATION INFORMATION FOR EXCAVATORS
1-800-892-0123
OR 811

STATE OF ILLINOIS
DEPARTMENT OF TRANSPORTATION

SUBMITTED June 27 2025
Bonnie James
REGIONAL ENGINEER

August 15 2025
Scott A. [Signature]
ENGINEER OF DESIGN AND ENVIRONMENT

August 15 2025
[Signature]
DIRECTOR OF HIGHWAYS PROJECT IMPLEMENTATION

PROJECT ENGINEER : ERIC HOWALD (309) 671-4481
PROJECT MANAGER : BEN TELLEFSON (309) 671-4477
CATALOG NO. 036663-000
CONTRACT NO. 68K25

PRINTED BY THE AUTHORITY
OF THE STATE OF ILLINOIS

INDEX OF SHEETS	
SHEET NO.	DESCRIPTION
1	COVER SHEET
2	COMMITMENTS, INDEX OF SHEETS, HIGHWAY STANDARDS, AND CONSTRUCTION NOTES
3	LIGHTING CONTROLLER LOCATIONS AND LEGEND
4	SUMMARY OF QUANTITIES
5	LIGHT TOWER AND LUMINAIRE INFORMATION (TAZEWELL COUNTY)
6 - 7	LIGHT TOWER LUMINAIRE REPLACEMENT I-74 AT RIVERFRONT DR. FLYOVER
8 - 9	LIGHT TOWER LUMINAIRE REPLACEMENT I-74 AT IL 116 (MAIN ST.)
10	LIGHT TOWER LUMINAIRE REPLACEMENT I-74 AT FONDULAC DR.
11-13	LIGHT TOWER LUMINAIRE REPLACEMENT I-74 AT WASHINGTON ST.
14	I-74 WB RAMP F-6 TUNNEL LUMINAIRE REPLACEMENT
15-22	I-74 WB RAMP F-6 TUNNEL EXISTING PLANS (FOR INFORMATION ONLY)
23	LUMINAIRE PERFORMACE TABLE - HIGH MAST LUMINAIRES
24	LUMINAIRE PERFORMACE TABLE - TUNNEL LUMINAIRES

HIGHWAY STANDARDS	
000001-08	STANDARD SYMBOLS, ABBREVIATIONS AND PATTERNS
001006	DECIMAL OF AN INCH & FOOT
701001-02	OFF-ROAD OPERATIONS, 2L, 2W, MORE THAN 15' AWAY
701006-05	OFF-ROAD OPERATIONS, 2L, 2W, 15' TO 24" FROM PAVEMENT EDGE
701101-05	OFF-ROAD OPERATIONS, MULTILANE, 15' TO 24" FROM PAVEMENT EDGE
701106-02	OFF-ROAD OPERATIONS, MULTILANE, MORE THAN 15' AWAY
701400-12	APPROACH TO LANE CLOSURE, FREEWAY/ EXPRESSWAY
701406-13	LANE CLOSURE, FREEWAY/ EXPRESSWAY, DAY OPERATIONS ONLY
701428-01	TRAFFIC CONTROL SETUP AND REMOVAL FREEWAY/ EXPRESSWAY
701456-05	PARTIAL EXIT RAMP CLOSURE, FREEWAY/ EXPRESSWAY
701601-09	URBAN LANE CLOSURE, MULTILANE, 1W OR 2W WITH NONTRAVERSABLE MEDIAN
701901-10	TRAFFIC CONTROL DEVICES
821101-03	LUMINAIRE WIRING IN POLE
701426-09	LANE CLOSURE, MULTILANE, INTERMITTENT OR MOVING OPERATION, FOR SPEEDS >= 45 MPH
720001-01	SIGN PANEL MOUNTING DETAILS

THERE HAVE BEEN NO COMMITMENTS MADE IN CONJUCTION WITH THIS PROJECT.

CONSTRUCTION NOTES	
1.	ANY MAINTENANCE OF EXISTING LIGHTING WILL BE CONSIDERED EXTRA WORK IN ACCORDANCE WITH ARTICLE 109.04 OF THE STANDARD SPECIFICATIONS.
2.	THE CONTRACTOR SHALL BE RESPONSIBLE FOR LOCATING EXISTING IDOT ELECTRICAL FACILITIES AT HIS/HER OWN EXPENSE IF REQUIRED. THE CONTRACTOR SHALL ALSO BE LIABLE FOR ANY DAMAGE TO IDOT FACILITIES RESULTING FROM INACCURATE LOCATING.
3.	THE CONTRACTOR SHALL VERIFY FIELD CONDITIONS PRIOR TO BIDDING. THERE WILL BE NO ADDITIONAL COMPENSATION PAID FOR CLAIMS THAT ARISE FROM A FAILURE TO FULLY INVESTIGATE EXISTING FIELD CONDITIONS.
4.	ELECTRICAL WORK SHALL CONFORM WITH NATIONAL, STATE, AND LOCAL CODES.
5.	ALL SURPLUS MATERIALS SHALL BE DISPOSED OF IN ACCORDANCE WITH ARTICLE 202.03 OF THE STANDARD SPECIFICATIONS.
6.	REMOVAL OF EXISTING ITEMS WILL NOT BE PAID FOR SEPARATELY, BUT SHALL BE INCLUDED IN THE UNIT BID PRICES FOR THE PROPOSED ITEMS.
7.	ALL HPS LAMPS SHALL BE DISPOSED OF AT A CERTIFIED DISPOSAL FACILITY. ALL COSTS, INCLUDING DISPOSAL AND SHIPPING CHARGES, SHALL BE INCLUDED IN THE COST OF THE PROPOSED PAY ITEMS FOR LUMINAIRE LAMP REPLACEMENT. THE CONTRACTOR SHALL SUBMIT SUPPORTING DOCUMENTATION FOR ALL DISPOSAL ACTIVITIES.
8.	THE CONTRACTOR MAY ELECT TO WORK DURING NON-PEAK HOURS AND WEEKENDS, HOWEVER, ALL COSTS ASSOCIATED WITH WORKING DURING THESE TIME PERIODS SHALL BE INCLUDED IN THE BID PRICES FOR THE PAY ITEMS. THERE WILL BE NO ADDITIONAL COMPENSATION FOR SHIFT DIFFERENTIALS AND PREMIUM TIME HOURS.
9.	PRIOR TO COMMENCING WORK, THE CONTRACTOR SHALL ACQUIRE ALL PERTINENT MANUFACTURER'S OPERATION AND MAINTENANCE MANUALS FOR THE TOWER LOWERING DEVICES AND LUMINAIRES. THE CONTRACTOR SHALL BE FAMILIAR AND KNOWLEDGEABLE IN THE MAINTENANCE AND OPERATION OF THE LIGHTING EQUIPMENT.
10.	THE CONTRACTOR SHALL HAVE ALL REQUIRED EQUIPMENT AND SUFFICIENT SUPPLIES OF ALL REQUIRED MATERIALS AVAILABLE AT THE IMMEDIATE WORK SITE TO MINIMIZE WORK OPERATIONS AND TRAFFIC DISRUPTIONS, INCREASE OPERATIONAL EFFICIENCY, AND PREVENT UNNECESSARY LOWERING OF THE LUMINAIRE RING.
11.	THE LANE CLOSURES FOR WORK ON THE 7 HIGH MAST TOWERS IN THE CENTER MEDIAN ON THE PEORIA SIDE OF THE MURRAY BAKER BRIDGE SHALL BE RESTRICTED TO OFF-PEAK HOURS (8:30AM TO 3:30PM) ON SUNDAY ONLY, SEE TABLE FOR DETAILS.
12.	THE LANE CLOSURES FOR WORK ON THE 7 HIGH MAST TOWERS IN THE CENTER MEDIAN ON THE TAZEWELL SIDE OF THE MURRAY BAKER BRIDGE SHALL BE RESTRICTED TO OFF-PEAK HOURS (8:30AM TO 3:30PM) ON SUNDAY ONLY, SEE TABLE FOR DETAILS.
13.	EXISTING LUMINAIRE WIRING, FUSES, AND FUSE HOLDERS WILL BE REUSED WITH THE PROPOSED HIGH MAST, TUNNEL, UNDERPASS, AND ROADWAY LUMINAIRES. IF THE EXISTING ITEMS ARE DAMAGED, INCOMPATIBLE, OR NOT RE-USABLE, THE CONTRACTOR SHALL FURNISH AND INSTALL NEW ITEMS AS REQUIRED FOR LUMINAIRE INSTALLATION AND AS DIRECTED BY THE ENGINEER. THE CONTRACTOR SHALL FURNISH AND INSTALL ALL ITEMS REQUIRED FOR LUMINAIRE INSTALLATION. ALL MATERIAL SHALL CONFORM TO THE STANDARD SPECIFICATIONS. THE COST OF THIS WORK SHALL BE INCLUDED IN THE COST OF THE PROPOSED LUMINAIRES.
14.	EXISTING LUMINAIRE MOUNTING BRACKETS AND HARDWARE WILL BE REUSED WITH THE PROPOSED HIGH MAST, TUNNEL, UNDERPASS, AND ROADWAY LUMINAIRES. IF THE EXISTING ITEMS ARE DAMAGED, INCOMPATIBLE, OR NOT RE-USABLE, THE CONTRACTOR SHALL FURNISH AND INSTALL NEW ITEMS AS REQUIRED FOR LUMINAIRE INSTALLATION AND AS DIRECTED BY THE ENGINEER. THE CONTRACTOR SHALL FURNISH AND INSTALL BRACKETS, HARDWARE, AND ALL OTHER ITEMS REQUIRED FOR LUMINAIRE INSTALLATION. ALL BRACKETS AND HARDWARE SHALL BE GALVANIZED STEEL OR STAINLESS STEEL. ALL MATERIAL SHALL CONFORM TO THE STANDARD SPECIFICATIONS. THE COST OF THIS WORK
15.	THE CONTRACTOR SHALL VERIFY EXISTING LUMINAIRE VOLTAGES PRIOR TO ORDERING MATERIAL.

MODEL NUMBER/NAME
FILE NAME: SHEETS

USER NAME = \$USERS	DESIGNED -	REVISED -
	DRAWN -	REVISED -
PLOT SCALE = \$SCALES	CHECKED -	REVISED -
PLOT DATE = \$DATES	DATE -	REVISED -




STATE OF ILLINOIS
DEPARTMENT OF TRANSPORTATION

**COMMITMENTS, INDEX OF SHEETS, HIGHWAY
STANDARDS, AND CONSTRUCTION NOTES**

SCALE: SHEET OF SHEETS STA. TO STA.

F.A.I. RTE.	SECTION	COUNTY	TOTAL SHEETS	SHEET NO.
74	72((8-9)L-1,(10)L);(90-11)L	PEORIA,TAZEWELL	24	2
CONTRACT NO. 68K25				
ILLINOIS FED. AID PROJECT				

LIGHTING CONTROLLER LOCATIONS			
I-74 EB	TAZEWELL	RIVERFRONT DR.	R
CAMP ST.	TAZEWELL	RIVERFRONT DR.	I
I-74 EB	TAZEWELL	IL 116 (MAIN ST.)	M
I-74 WB	TAZEWELL	IL 116 (MAIN ST.)	J
I-74 EB	TAZEWELL	WASHINGTON	W

LEGEND			
	EX. HIGH MAST LIGHT TOWER		
	EX. LIGHT POLE		
	EX. LIGHTING CONTROLLER		
LIGHT TOWER DESIGNATION			
<table border="1" style="margin: auto;"> <tr> <td style="padding: 2px;">6 EFG</td> </tr> <tr> <td style="padding: 2px;">L-04</td> </tr> </table>		6 EFG	L-04
6 EFG			
L-04			
6 -	DENOTES NUMBER OF LUMINAIRES ON TOWER		
E -	DENOTES LIGHTING CONTROLLER		
FG -	DENOTES LIGHTING CIRCUIT		
L-04 -	DENOTES LIGHT ON CIRCUIT DIAGRAM		

MODEL: \\MODEL\NAME\$
FILE NAME: SHEETS

SUMMARY OF QUANTITIES

PEORIA COUNTY
CODE 0021

TAZEWELL COUNTY
CODE 0021

90/10 FED/STATE
URBAN LIGHTING

90/10 FED/STATE
URBAN LIGHTING

CODE NUMBER	ITEM DESCRIPTION	UNIT	TOTAL QTY.	QTY.	QTY.
67100100	MOBILIZATION	L SUM	1.0	0.7	0.3
82110015	LUMINAIRE, LED, HIGHMAST, OUTPUT DESIGNATION H	EACH	257.0		257.0
X7010216	TRAFFIC CONTROL AND PROTECTION, (SPECIAL)	L SUM	1.0	0.3	0.7
X8211000	UNDERPASS LUMINAIRE (SPECIAL)	EACH	62.0		62.0
X8210051	LUMINAIRE, LED, TUNNEL, LOCATION 1	EACH	18.0	18.0	
X8210052	LUMINAIRE, LED, TUNNEL, LOCATION 2	EACH	329.0	329.0	

MODEL: MODELNAME\$
FILE NAME: TITLE

USER NAME = \$USERS	DESIGNED -	REVISED -
	DRAWN -	REVISED -
PLOT SCALE = \$SCALE\$	CHECKED -	REVISED -
PLOT DATE = \$DATES	DATE -	REVISED -

STATE OF ILLINOIS
DEPARTMENT OF TRANSPORTATION

SUMMARY OF QUANTITIES

SCALE: SHEET OF SHEETS STA. TO STA.

F.A.I. RTE.	SECTION	COUNTY	TOTAL SHEETS	SHEET NO.
74	72[(8-9)L-1,(10)L];(90-11)L	PEORIA,TAZEWELL	24	4
CONTRACT NO. 68K25				
ILLINOIS FED. AID PROJECT				

HIGH MAST TOWER LOCATIONS (TAZEWELL COUNTY)													
HIGH MAST TOWER					LUMINAIRE								
LOCATION					IDENTIFICATION			QUANTITY	DISTRIB. TYPE	SHIELD SIZE		WATTAGE/VOLTAGE	INSTALL CONTRACT
ROADWAY	COUNTY	STATION	OFFSET	HEIGHT (M)	CONT.	CIRCUIT	NUMBER			HOUSE SIDE	STREET SIDE		
I-74 EB	TAZEWELL	151+415.3	16.0 L	30	R	EF	7	7	M-C-III	400	N.A.	400W/240V	68195
I-74 EB	TAZEWELL	151+571.3	23.0 R	30	R	EF	6	7	M-C-III	400	N.A.	400W/240V	68195
I-74 EB	TAZEWELL	151+746.0	25.3 R	30	R	EF	1	8	M-C-V	N.A.	N.A.	400W/240V	68195
I-74 EB	TAZEWELL	151+826.6	1.50 L	24	R	CD	1	8	M-C-V	N.A.	N.A.	400W/240V	68195
I-74 EB	TAZEWELL	151+835.5	67.5 R	30	R	GH	1	6	M-C-V	N.A.	N.A.	400W/240V	68195
I-74 EB	TAZEWELL	151+971.0	2.00 L	24	R	AB	1	8	M-C-V	N.A.	N.A.	400W/240V	68195
I-74 EB	TAZEWELL	152+119.0	2.50 L	24	R	AB	2	6	M-C-II	200	200	400W/240V	68195
I-74 EB	TAZEWELL	152+264.7	3.00 L	24	R	AB	3	6	M-C-II	200	200	400W/240V	68195
I-74 EB	TAZEWELL	152+424.0	3.50 L	24	R	AB	4	6	M-C-II	200	200	400W/240V	68195
RAMP H-1	TAZEWELL	10+455.0	12.5 R	30	I	AB	2	8	M-C-V	N.A.	N.A.	400W/240V	68195
RAMP H-1	TAZEWELL	10+558.5	10.4 R	30	I	AB	1	8	M-C-V	N.A.	N.A.	400W/240V	68195
RAMP H-1	TAZEWELL	10+678.0	42.4 L	30	I	CD	1	8	M-C-V	N.A.	N.A.	400W/240V	68195
RAMP H-4	TAZEWELL	10+540.82	12.5 L	30	R	CD	3	3	M-C-II	400	N.A.	400W/240V	68195
RAMP H-4	TAZEWELL	10+680.4	12.4 L	30	R	CD	2	3	M-C-II	400	N.A.	400W/240V	68195
RAMP I-3	TAZEWELL	10+082.5	16.0 R	30	I	CD	2	6	M-C-III	N.A.	N.A.	400W/240V	68195
RAMP I-3	TAZEWELL	10+236.8	14.0 R	30	I	CD	3	4	M-C-III	N.A.	N.A.	400W/240V	68195
I-74 EB	TAZEWELL	152+594.9	MEDIAN	24	M	AB	4	6	M-C-II	200	200	400W/240V	68199
I-74 EB	TAZEWELL	152+747.0	MEDIAN	24	M	AB	3	8	M-C-III	200	200	400W/240V	68199
I-74 EB	TAZEWELL	152+864.0	26.0 R	30	M	AB	2	6	M-C-III	200	200	400W/240V	68199
I-74 EB	TAZEWELL	152+995.0	34.6 R	30	M	AB	1	8	M-C-III	200	200	400W/240V	68199
I-74 EB	TAZEWELL	153+154.0	17.5 R	30	M	CD	1	8	M-C-II	200	200	400W/240V	68199
I-74 EB	TAZEWELL	153+328.7	27.8 R	30	M	CD	2	6	M-C-III	200	200	400W/240V	68199
I-74 EB	TAZEWELL	153+471.7	36.6 R	36	M	CD	3	6	M-C-III	200	200	400W/240V	68199
I-74 EB	TAZEWELL	153+782.0	MEDIAN	24	W	AB	2	8	M-C-II	400	400	400W/240V	68199
I-74 EB	TAZEWELL	153+919.0	MEDIAN	24	W	AB	1	6	M-C-III	N.A.	N.A.	400W/240V	68199
I-74 EB	TAZEWELL	153+938.8	85.7 R	30	W	EF	1	5	M-C-III	N.A.	N.A.	400W/240V	68199
I-74 EB	TAZEWELL	154+045.8	MEDIAN	24	W	CD	1	6	M-C-V	N.A.	N.A.	400W/240V	68199
I-74 EB	TAZEWELL	154+053.0	106.4 R	30	W	EF	2	6	M-C-V	N.A.	N.A.	400W/240V	68199
I-74 EB	TAZEWELL	154+165.4	MEDIAN	24	W	CD	2	4	M-C-II	400	400	400W/240V	68199
I-74 EB	TAZEWELL	154+196.4	71.4 R	30	W	EF	3	5	M-C-II	N.A.	N.A.	400W/240V	68199
I-74 EB	TAZEWELL	154+295.5	MEDIAN	24	W	CD	3	6	M-C-II	400	400	400W/240V	EXISTING
I-74 EB	TAZEWELL	154+450.0	MEDIAN	24	W	CD	4	6	M-C-II	400	400	400W/240V	68199
I-74 EB	TAZEWELL	154+609.4	MEDIAN	24	W	CD	5	6	M-C-II	400	400	400W/240V	68199
I-74 EB	TAZEWELL	142+388.1	28.0 L	30	J	AB	2	6	M-C-V	N.A.	N.A.	400W/240V	68201
I-74 EB	TAZEWELL	142+487.2	38.4 L	30	J	AB	1	6	M-C-II	200	200	400W/240V	68201
I-74 EB	TAZEWELL	142+902.6	26.6 L	30	J	CD	1	8	M-C-II	200	200	400W/240V	68201
I-74 EB	TAZEWELL	143+067.5	46.0 L	30	J	EF	1	5	M-C-II	200	200	400W/240V	68201
I-74 EB	TAZEWELL	143+206.0	27.4 L	30	J	EF	2	4	M-C-V	N.A.	N.A.	400W/240V	68201
I-74 EB	TAZEWELL	143+290.0	27.0 L	30	J	EF	3	4	M-C-III	N.A.	N.A.	400W/240V	68201
I-74 EB	TAZEWELL	143+415.0	102.7 L	30	W	AB	3	5	M-C-V	N.A.	N.A.	400W/240V	68201
I-74 EB	TAZEWELL	143+581.5	108.0 L	30	W	AB	4	6	M-C-V	N.A.	N.A.	400W/240V	68201
I-74 EB	TAZEWELL	143+704.0	86.5 L	30	W	AB	5	5	M-C-II	400	N.A.	400W/240V	68201

UNDERPASS LUMINAIRE LOCATIONS						
LOCATION	IDENTIFICATION			QUANTITY	WATTAGE/VOLTAGE	INSTALLED CONTRACT
ROADWAY	COUNTY	CONT.	CIRCUIT			
RAMP H-3 OVER I-74	TAZEWELL	R	GH	4	100W/240V	68195
RAMP H-3 OVER RAMPS H-1 & H-4	TAZEWELL	EX. #1	AB	2	100W/240V	68195
RAMP H-4 OVER I-74	TAZEWELL	R	EF	4	100W/240V	68195
RAMP K-1 OVER IL 116 (MAIN ST.)	TAZEWELL	M	EF	4	100W/240V	68199
I-74 EB OVER IL 116 (MAIN ST.)	TAZEWELL	M	EF	8	100W/240V	68199
RAMP K-1 OVER RAMP J-2	TAZEWELL	M	CD	2	100W/240V	68199
I-74 EB OVER WASHINGTON & TAYLOR	TAZEWELL	W	GH	10	100W/240V	68199
I-74 EB OVER IL 8 (CAMP ST.)	TAZEWELL	W	GH	4	100W/240V	68199
RAMP K-2 OVER IL 116 (MAIN ST.)	TAZEWELL	M	EF	4	100W/240V	68201
I-74 WB OVER IL 116 (MAIN ST.)	TAZEWELL	M	EF	8	100W/240V	68201
RAMP K-2 OVER RAMP J-3	TAZEWELL	M	CD	2	100W/240V	68201
I-74 WB OVER IL 8 (CAMP ST.)	TAZEWELL	W	GH	4	100W/240V	68201
I-74 WB OVER WASHINGTON ST.	TAZEWELL	W	GH	6	100W/240V	68201

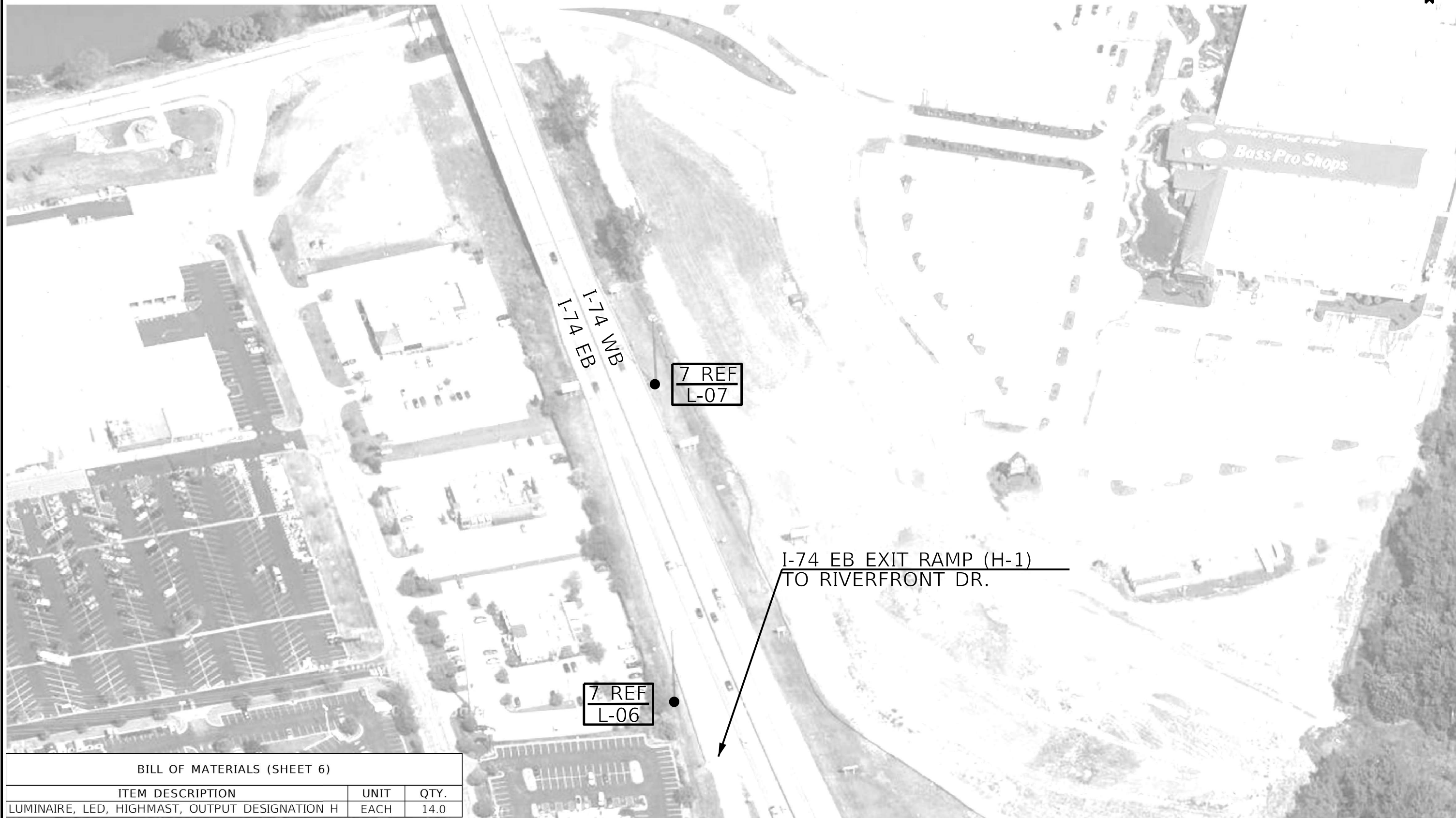
MODEL NUMBER NAMES FILE NAMES SHEETS

USER NAME = \$USERS	DESIGNED -	REVISED -
	DRAWN -	REVISED -
PLOT SCALE = \$SCALES	CHECKED -	REVISED -
PLOT DATE = \$DATES	DATE -	REVISED -

STATE OF ILLINOIS
DEPARTMENT OF TRANSPORTATION

EX. LIGHT TOWER AND EX. LUMINAIRE INFORMATION
TAZEWELL COUNTY

F.A.I. RTE.	SECTION	COUNTY	TOTAL SHEETS	SHEET NO.
74	72[(8-9)L-1,(10)L];(90-11)L	PEORIA,TAZEWELL	24	5
CONTRACT NO. 68K25				
SCALE:		SHEET OF SHEETS	STA.	TO STA.
ILLINOIS FED. AID PROJECT				



I-74 EB
I-74 NB

7 REF
L-07

I-74 EB EXIT RAMP (H-1)
TO RIVERFRONT DR.

7 REF
L-06

BILL OF MATERIALS (SHEET 6)

ITEM DESCRIPTION	UNIT	QTY.
LUMINAIRE, LED, HIGHMAST, OUTPUT DESIGNATION H	EACH	14.0

NOT TO SCALE

MODEL NUMBER/NAME
FILE NAME: 0615

USER NAME = \$USERS	DESIGNED -	REVISED -
PLOT SCALE = \$SCALES	DRAWN -	REVISED -
PLOT DATE = \$DATES	CHECKED -	REVISED -
	DATE -	REVISED -

STATE OF ILLINOIS
DEPARTMENT OF TRANSPORTATION

**LIGHT TOWER LUMINAIRE REPLACEMENT
I-74 AT RIVERFRONT DR. FLYOVER**

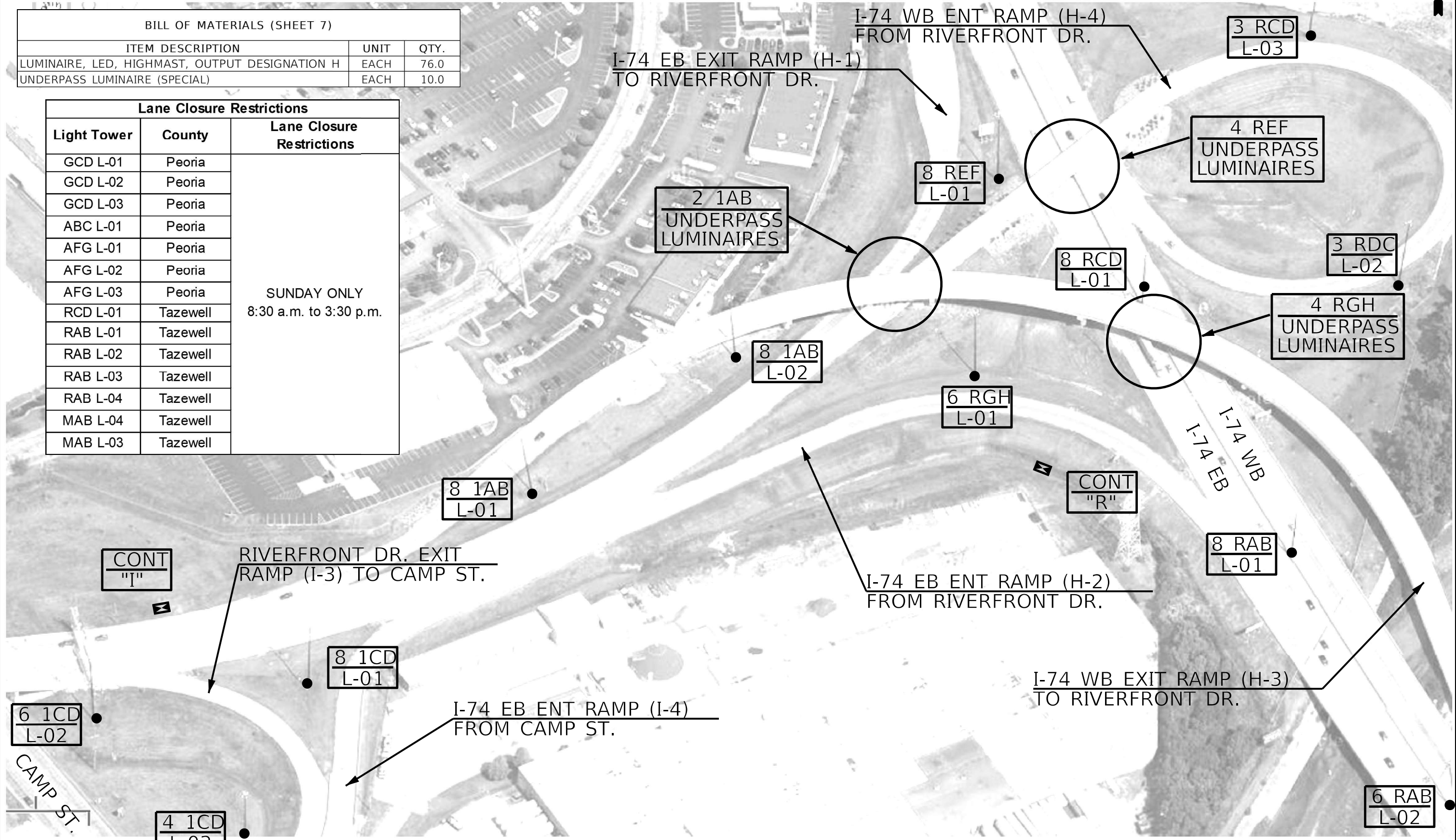
SCALE: SHEET OF SHEETS STA. TO STA.

F.A.I. RTE.	SECTION	COUNTY	TOTAL SHEETS	SHEET NO.
74	72[(8-9)N-1,(10)I];(90-1)I	PEORIA,TAZEWELL	24	6
CONTRACT NO. 68K25				
ILLINOIS FED. AID PROJECT				



BILL OF MATERIALS (SHEET 7)		
ITEM DESCRIPTION	UNIT	QTY.
LUMINAIRE, LED, HIGHMAST, OUTPUT DESIGNATION H	EACH	76.0
UNDERPASS LUMINAIRE (SPECIAL)	EACH	10.0

Lane Closure Restrictions		
Light Tower	County	Lane Closure Restrictions
GCD L-01	Peoria	SUNDAY ONLY 8:30 a.m. to 3:30 p.m.
GCD L-02	Peoria	
GCD L-03	Peoria	
ABC L-01	Peoria	
AFG L-01	Peoria	
AFG L-02	Peoria	
AFG L-03	Peoria	
RCD L-01	Tazewell	
RAB L-01	Tazewell	
RAB L-02	Tazewell	
RAB L-03	Tazewell	
RAB L-04	Tazewell	
MAB L-04	Tazewell	
MAB L-03	Tazewell	



MODEL NUMBER/NAME
FILE NAME/REVISED

USER NAME = \$USERS	DESIGNED -	REVISED -
PLOT SCALE = \$SCALE	DRAWN -	REVISED -
PLOT DATE = \$DATE	CHECKED -	REVISED -
	DATE -	REVISED -

STATE OF ILLINOIS
DEPARTMENT OF TRANSPORTATION

**LIGHT TOWER LUMINAIRE REPLACEMENT
I-74 AT RIVERFRONT DR. FLYOVER (CONTINUED)**

F.A.I. RTE.	SECTION	COUNTY	TOTAL SHEETS	SHEET NO.
74	72((8-9)L-1,(10)L);(90-11)L	PEORIA,TAZEWELL	24	7
CONTRACT NO. 68K25				
ILLINOIS FED. AID PROJECT				

NOT TO SCALE



BILL OF MATERIALS (SHEET 8)		
ITEM DESCRIPTION	UNIT	QTY.
LUMINAIRE, LED, HIGHMAST, OUTPUT DESIGNATION H	EACH	18.0

MODEL NUMBER/NAME
FILE NAME: SHEET 8

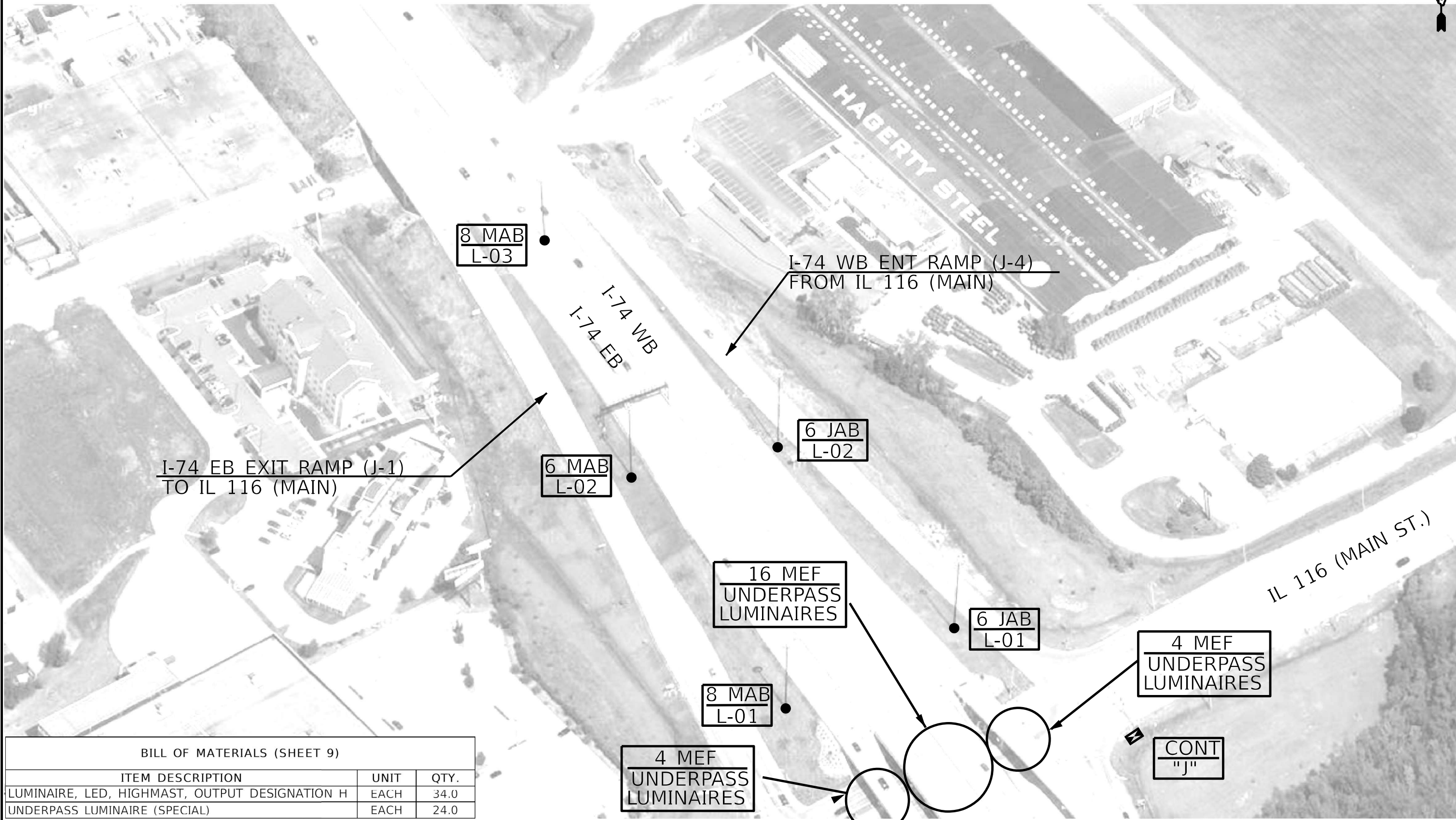
USER NAME = \$USERS	DESIGNED -	REVISED -
PLOT SCALE = \$SCALES	DRAWN -	REVISED -
PLOT DATE = \$DATES	CHECKED -	REVISED -
	DATE -	REVISED -

STATE OF ILLINOIS
DEPARTMENT OF TRANSPORTATION

**LIGHT TOWER LUMINAIRE REPLACEMENT
I-74 AT IL 116 (MAIN ST.)**

F.A.I. RTE.	SECTION	COUNTY	TOTAL SHEETS	SHEET NO.
74	72((8-9)L-1,(10)L);(90-11)L	PEORIA,TAZEWELL	24	8
CONTRACT NO. 68K25				
ILLINOIS FED. AID PROJECT				

NOT TO SCALE



I-74 EB EXIT RAMP (J-1)
TO IL 116 (MAIN)

I-74 WB ENT RAMP (J-4)
FROM IL 116 (MAIN)

8 MAB
L-03

6 MAB
L-02

6 JAB
L-02

16 MEF
UNDERPASS
LUMINAIRE

6 JAB
L-01

4 MEF
UNDERPASS
LUMINAIRE

8 MAB
L-01

4 MEF
UNDERPASS
LUMINAIRE

CONT
"J"

BILL OF MATERIALS (SHEET 9)

ITEM DESCRIPTION	UNIT	QTY.
LUMINAIRE, LED, HIGHMAST, OUTPUT DESIGNATION H	EACH	34.0
UNDERPASS LUMINAIRE (SPECIAL)	EACH	24.0

MODEL NUMBER/NAME
FILE NAME: 68K25

USER NAME = \$USERS	DESIGNED -	REVISED -
PLOT SCALE = \$SCALES	DRAWN -	REVISED -
PLOT DATE = \$DATES	CHECKED -	REVISED -
	DATE -	REVISED -

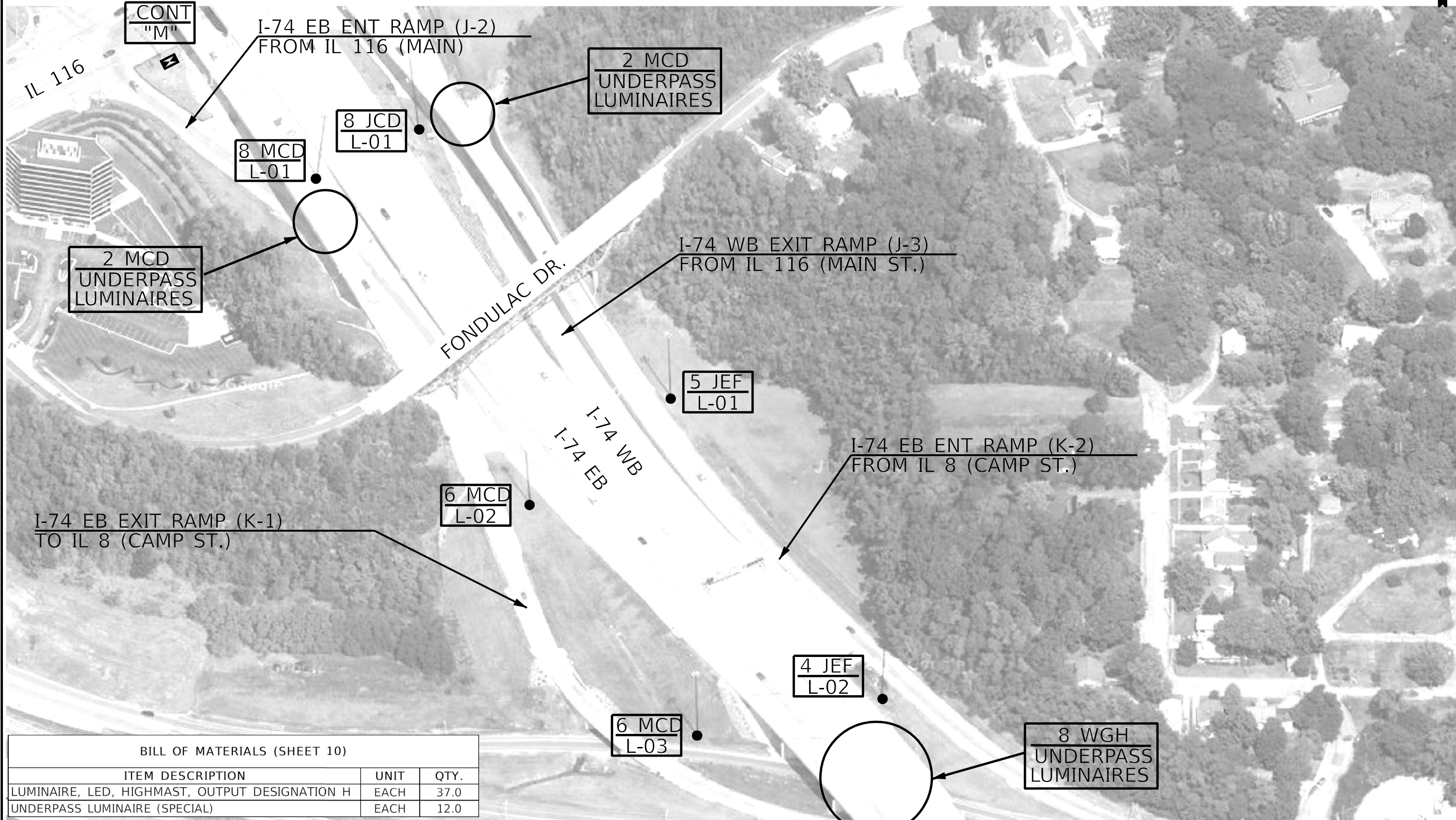
STATE OF ILLINOIS
DEPARTMENT OF TRANSPORTATION

**LIGHT TOWER LUMINAIRE REPLACEMENT
I-74 AT IL 116 (MAIN ST.) (CONTINUED)**

SCALE: SHEET OF SHEETS STA. TO STA.

F.A.I. RTE.	SECTION	COUNTY	TOTAL SHEETS	SHEET NO.
74	72((8-9)L-1,(10)L);(90-11)L	PEORIA,TAZEWELL	24	9
CONTRACT NO. 68K25				
ILLINOIS FED. AID PROJECT				

NOT TO SCALE



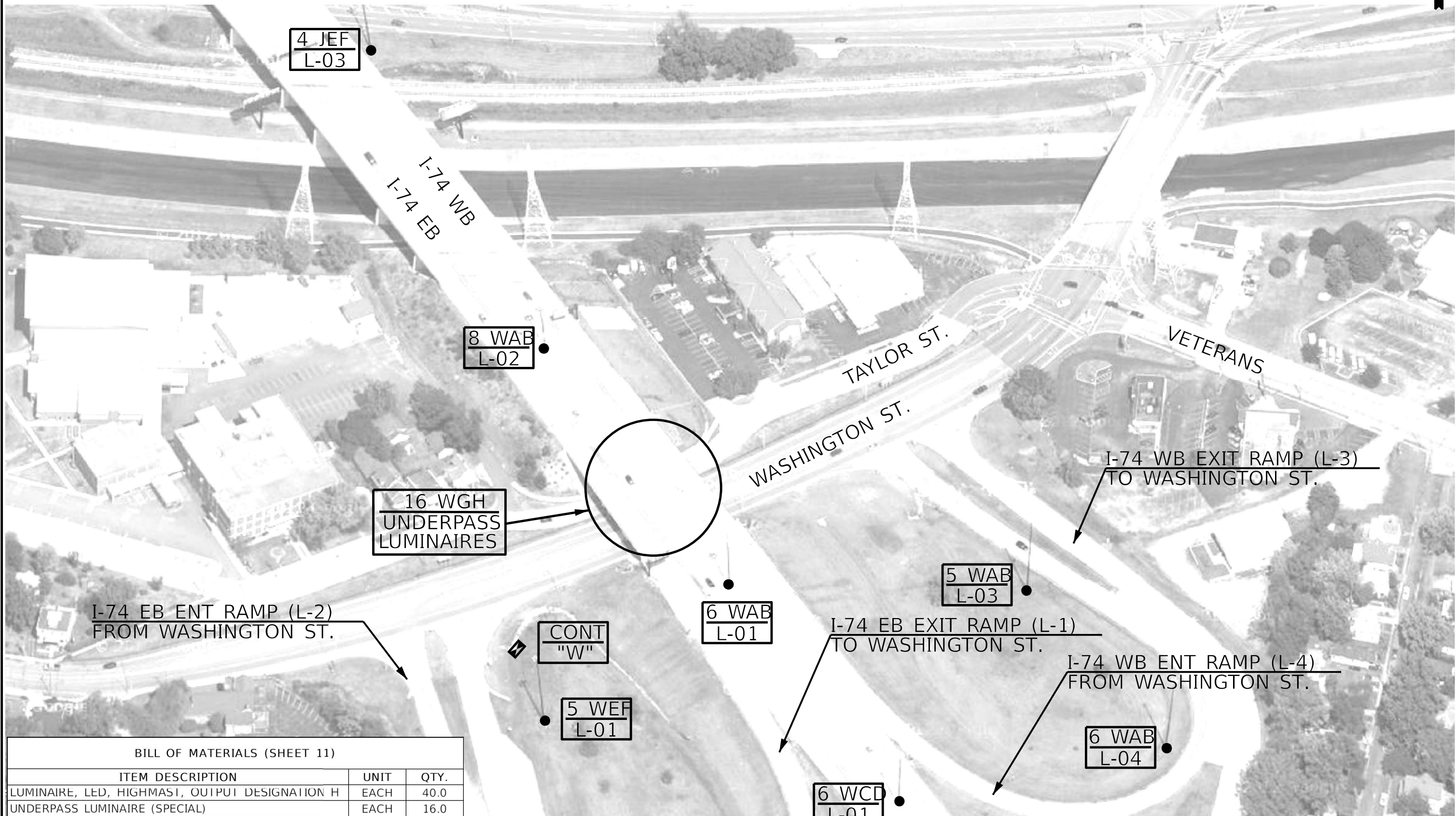
BILL OF MATERIALS (SHEET 10)

ITEM DESCRIPTION	UNIT	QTY.
LUMINAIRE, LED, HIGHMAST, OUTPUT DESIGNATION H	EACH	37.0
UNDERPASS LUMINAIRE (SPECIAL)	EACH	12.0

MODEL NUMBER/NAME
FILE NAME: 68K25

NOT TO SCALE

USER NAME = \$USERS PLOT SCALE = \$SCALES PLOT DATE = \$DATES	DESIGNED - DRAWN - CHECKED - DATE -	REVISED - REVISED - REVISED - REVISED -	STATE OF ILLINOIS DEPARTMENT OF TRANSPORTATION	LIGHT TOWER LUMINAIRE REPLACEMENT I-74 AT FONDULAC DR.	F.A.I. RTE. 74	SECTION 72[(8-9)L-1.(10L);(90-11)L	COUNTY PEORIA,TAZEWELL	TOTAL SHEETS 24	SHEET NO. 10
SCALE: SHEET OF SHEETS STA. TO STA.					CONTRACT NO. 68K25				
					ILLINOIS FED. AID PROJECT				



I-74 EB ENT RAMP (L-2)
FROM WASHINGTON ST.

16 WGH
UNDERPASS
LUMINAIRES

8 WAB
L-02

4 JEF
L-03

CONT
"W"

5 WEF
L-01

6 WAB
L-01

6 WCD
L-01

5 WAB
L-03

6 WAB
L-04

I-74 WB EXIT RAMP (L-3)
TO WASHINGTON ST.

I-74 EB EXIT RAMP (L-1)
TO WASHINGTON ST.

I-74 WB ENT RAMP (L-4)
FROM WASHINGTON ST.

BILL OF MATERIALS (SHEET 11)

ITEM DESCRIPTION	UNIT	QTY.
LUMINAIRE, LED, HIGHMAST, OUTPUT DESIGNATION H	EACH	40.0
UNDERPASS LUMINAIRE (SPECIAL)	EACH	16.0

STATE OF ILLINOIS
DEPARTMENT OF TRANSPORTATION

LIGHT TOWER LUMINAIRE REPLACEMENT
I-74 AT WASHINGTON ST.

SCALE: SHEET OF SHEETS STA. TO STA.

F.A.I. RTE.	SECTION	COUNTY	TOTAL SHEETS	SHEET NO.
74	72[(8-9)L-1,(10)L;(90-11)L	PEORIA,TAZEWELL	24	11
CONTRACT NO. 68K25				
ILLINOIS FED. AID PROJECT				

NOT TO SCALE

MODEL NUMBER/NAME
FILE NAME: SHEETS

USER NAME = \$USERS	DESIGNED -	REVISED -
PLOT SCALE = \$SCALES	DRAWN -	REVISED -
PLOT DATE = \$DATES	CHECKED -	REVISED -
	DATE -	REVISED -



6 WEF
L-02

5 WAB
L-05

4 WCD
L-02

5 WEF
L-03

6 WCD
L-03

6 WCD
L-04

I-74 WB EXIT RAMP (L-3)
WASHINGTON ST.

I-74 EB ENT RAMP (L-2)
FROM WASHINGTON ST.

I-74 WB
I-74 EB

BILL OF MATERIALS (SHEET 12)

ITEM DESCRIPTION	UNIT	QTY.
LUMINAIRE, LED, HIGHMAST, OUTPUT DESIGNATION H	EACH	32.0

NOT TO SCALE

MODEL NUMBER/NAME
FILE NAME: 68K25

USER NAME = \$USERS	DESIGNED -	REVISED -
PLOT SCALE = \$SCALE\$	DRAWN -	REVISED -
PLOT DATE = \$DATE\$	CHECKED -	REVISED -
	DATE -	REVISED -

STATE OF ILLINOIS
DEPARTMENT OF TRANSPORTATION

**LIGHT TOWER LUMINAIRE REPLACEMENT
I-74 AT WASHINGTON ST. (CONTINUED)**

F.A.I. RTE.	SECTION	COUNTY	TOTAL SHEETS	SHEET NO.
74	72[(8-9)L-1,(10)L];(90-11)L	PEORIA,TAZEWELL	24	12
CONTRACT NO. 68K25				
ILLINOIS FED. AID PROJECT				

SCALE: SHEET OF SHEETS STA. TO STA.



6 WCD
L-05

I-74 WB
I-74 EB

BILL OF MATERIALS (SHEET 13)		
ITEM DESCRIPTION	UNIT	QTY.
LUMINAIRE, LED, HIGHMAST, OUTPUT DESIGNATION H	EACH	6.0

MODEL NUMBER NAME
FILE NAME: 68K25

NOT TO SCALE

USER NAME = \$USERS	DESIGNED -	REVISED -	STATE OF ILLINOIS DEPARTMENT OF TRANSPORTATION	LIGHT TOWER LUMINAIRE REPLACEMENT I-74 AT WASHINGTON ST. (CONTINUED)	F.A.I. RTE.	SECTION	COUNTY	TOTAL SHEETS	SHEET NO.	
PLOT SCALE = \$SCALES	DRAWN -	REVISED -			74	72[(8-9)L-1,(10)L];(90-11)L	PEORIA,TAZEWELL	24	13	
PLOT DATE = \$DATES	CHECKED -	REVISED -			CONTRACT NO. 68K25					
	DATE -	REVISED -			ILLINOIS FED. AID PROJECT					
SCALE:				SHEET	OF	SHEETS	STA.	TO STA.		



BILL OF MATERIALS (SHEET 14)		
ITEM DESCRIPTION	UNIT	QTY.
LUMINAIRE, LED, TUNNEL, LOCATION 1	EACH	18.0
LUMINAIRE, LED, TUNNEL, LOCATION 2	EACH	329.0

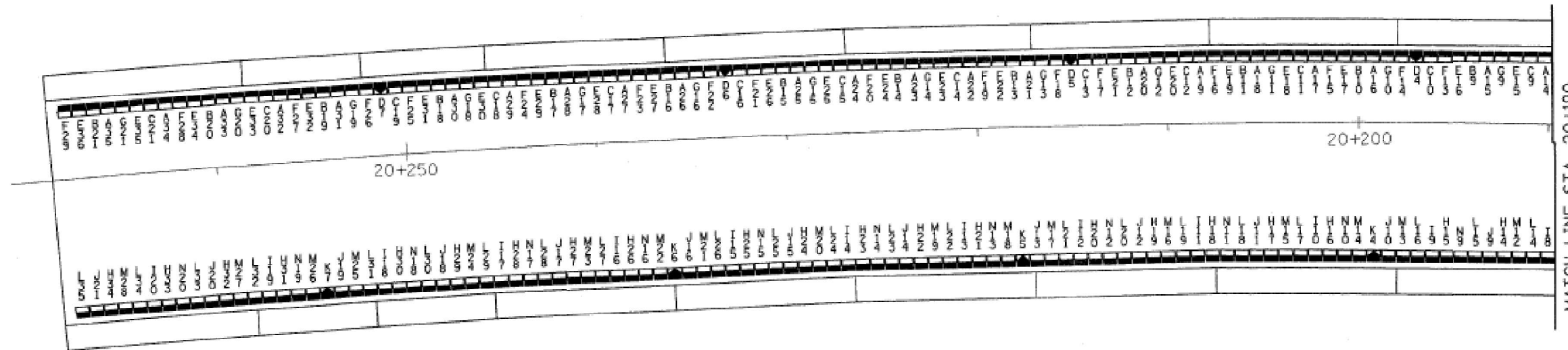
MODEL NUMBER NAMES FILE NAMES SHEETS

NOT TO SCALE

USER NAME = \$USERS	DESIGNED -	REVISED -	STATE OF ILLINOIS DEPARTMENT OF TRANSPORTATION	I-74 WB RAMP F-06 TUNNEL LUMINAIRE REPLACEMENT	F.A.I. RTE.	SECTION	COUNTY	TOTAL SHEETS	SHEET NO.	
PLOT SCALE = \$SCALES	DRAWN -	REVISED -			74	72[(8-9)L-1,(10)L];(90-11)L	PEORIA,TAZEWELL	24	14	
PLOT DATE = \$DATES	CHECKED -	REVISED -			CONTRACT NO. 68K25					
	DATE -	REVISED -			ILLINOIS	FED. AID PROJECT				
SCALE:				SHEET	OF	SHEETS	STA.	TO STA.		

F.A.I. RTE.	SECTION	COUNTY	TOTAL SHEETS	SHEET NO.
74	72(7-9)WB-2	PEORIA	2775	2773
STA.	TO STA.			
FED. ROAD DIST. NO.	ILLINOIS FED. AID PROJECT			

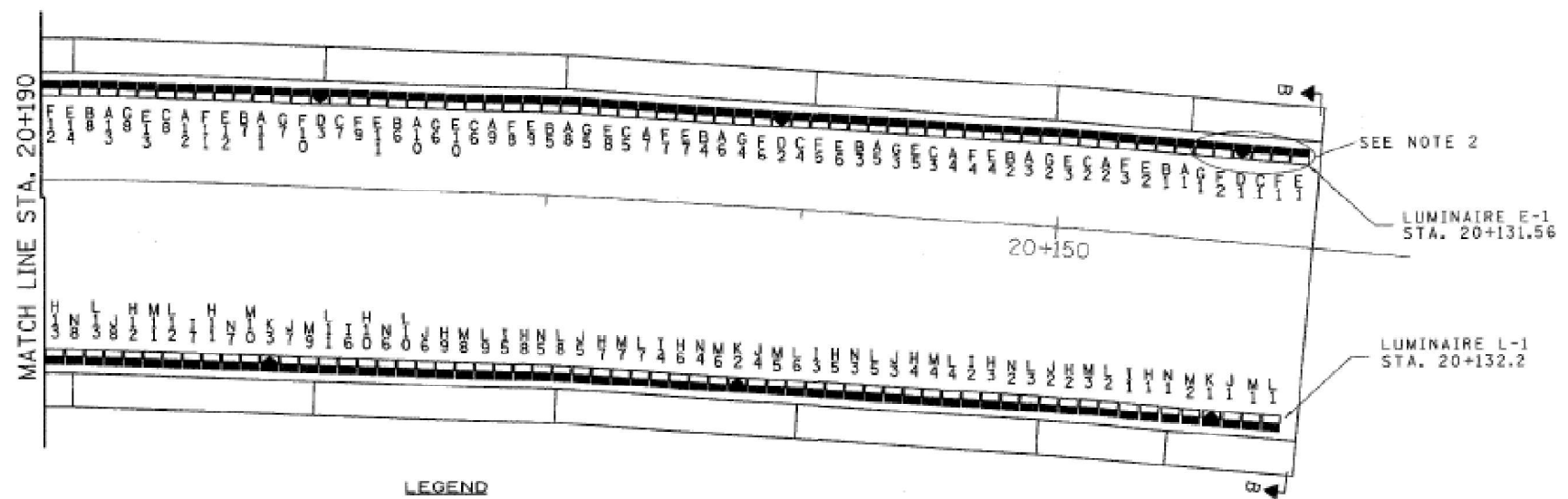
68198



FOR INFORMATION ONLY

NOTES

1. THE COST OF THE CONTINUOUS CONCRETE INSERT SHALL BE INCLUDED IN THE PAY ITEM "CONDUIT EMBEDDED IN STRUCTURE, 40mm DIA. PVC."
2. FOR TYPICAL TUNNEL LUMINAIRE PLAN VIEW, AND CROSS SECTION B-B, SEE SHEET 38 OR 38A AND 39 RESPECTIVELY.
3. THE COST OF THE LIQUID TIGHT FLEX. CONDUIT SHALL BE INCLUDED IN THE PAY ITEM "CONDUIT EMBEDDED IN STRUCTURE, 40MM DIA. PVC."
4. PROPOSED TUNNEL LUMINAIRES SHALL BE SPACED AT 750mm CENTERS.



STREET LIGHTING-BILL OF MATERIAL-THIS SHEET

PAY ITEM	UNIT	QTY.
CONDUIT EMBEDDED IN STRUCTURE, 40mm DIA. PVC	METER	503.0
JUNCTION BOX, NON-METALLIC, EMBEDDED IN STRUCTURE, 300mmX300mmX150mm	EACH	2
JUNCTION BOX EMBEDDED IN STRUCTURE 200mmX200mmX150mm	EACH	168
TUNNEL LUMINAIRE, INSTALL ONLY	EACH	335

LEGEND

- PROPOSED DAY TUNNEL LUMINAIRE, 400W HPS (INSTALL ONLY)
- PROPOSED NIGHT TUNNEL LUMINAIRE, 100W (INSTALL ONLY)

LIGHTING SHEET 37 OF 81

REVISIONS	
NAME	DATE

ILLINOIS DEPARTMENT OF TRANSPORTATION

BRIDGE LIGHTING PLAN
RAMP F-6 TUNNEL

DRAWN BY GHT
CHECKED BY MRR

DATE: 12/23/03

ab alfred benesch & company
CONSULTING ENGINEERS
200 NORTH WICHITA AVENUE, CHICAGO, ILLINOIS 60601

USER NAME = SUSERS	DESIGNED -	REVISED -
	DRAWN -	REVISED -
PLOT SCALE = 5SCALES	CHECKED -	REVISED -
PLOT DATE = SDATES	DATE -	REVISED -

STATE OF ILLINOIS
DEPARTMENT OF TRANSPORTATION

**I-74 WB RAMP F-6
TUNNEL LUMINAIRE REPLACEMENT**

SCALE: SHEET OF SHEETS STA. TO STA.

F.A.I. RTE.	SECTION	COUNTY	TOTAL SHEETS	SHEET NO.
74	72(8-9)L-1,(10)L:(90-11)L	PEORIA,TAZEWELL	24	15
CONTRACT NO. 68K25			ILLINOIS FED. AID PROJECT	

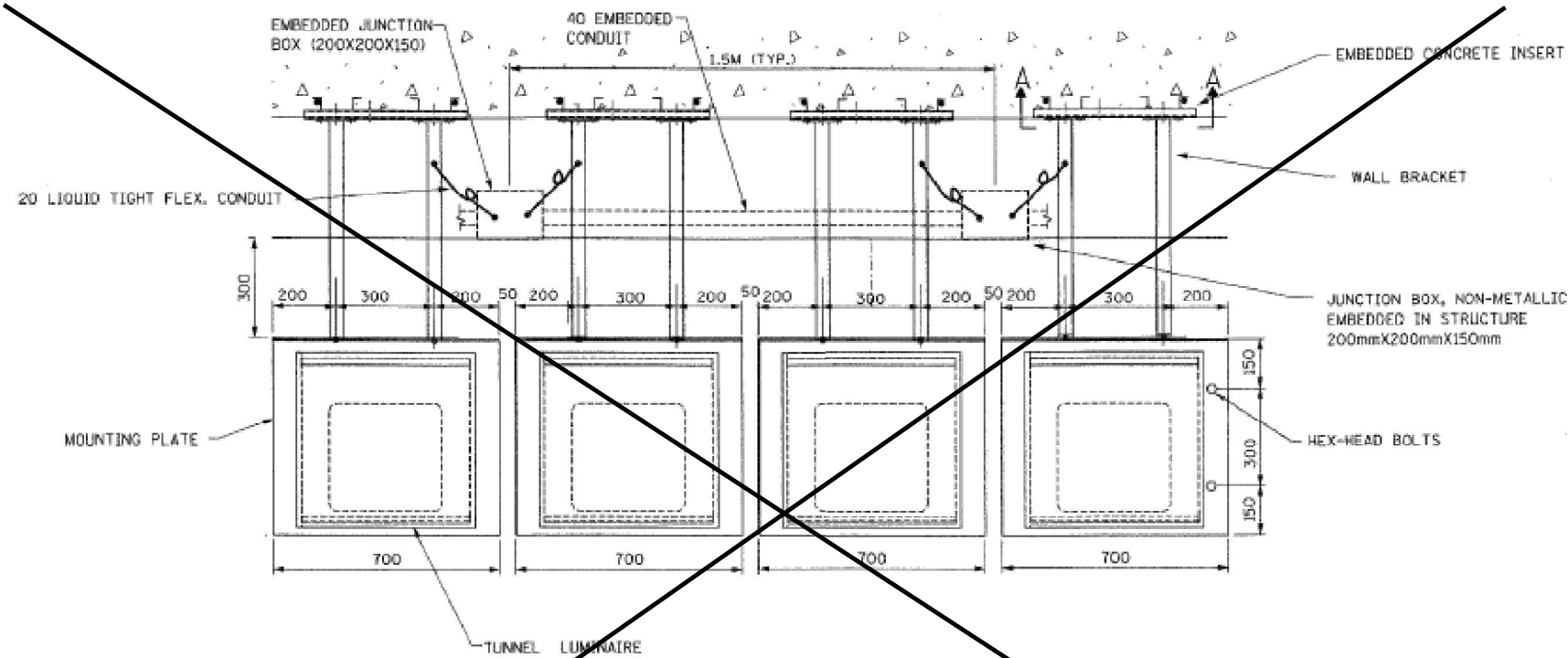
MODEL NUMBER/DATE FILE NAME/REVISED

2/23/2004

ILLINOIS DEPARTMENT OF TRANSPORTATION

F.A.I. RTE.	SECTION	COUNTY	TOTAL SHEETS	SHEET NO.
74	72(1-8-9)L-1B-2	PEORIA	2725	2374
STA.		TO STA.		
FED. ROAD DIST. NO.		ILLINOIS FED. AID PROJECT		

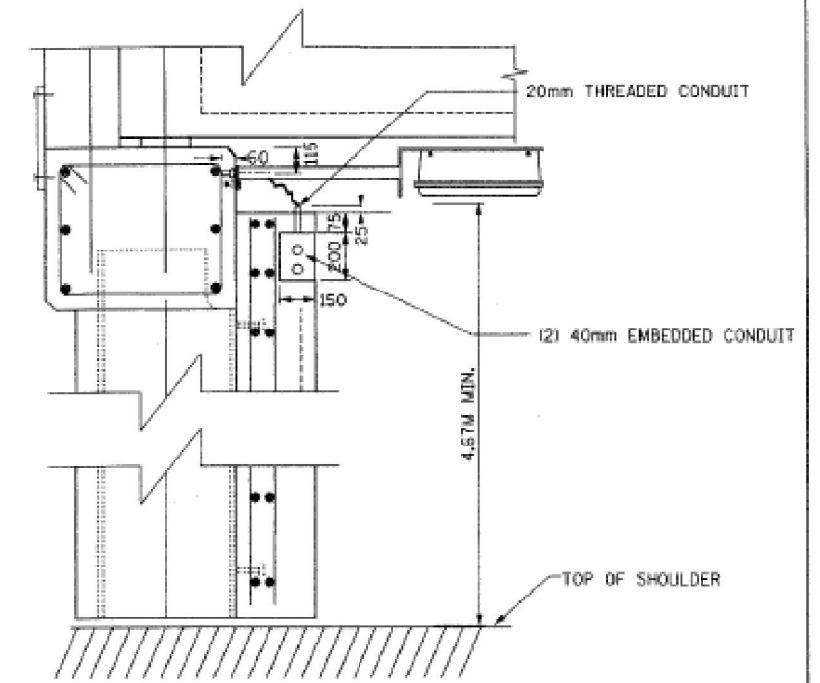
6819g



OPTION-1: TUNNEL LUMINAIRE INSTALLATION LAYOUT- PLAN VIEW (TYPICAL)

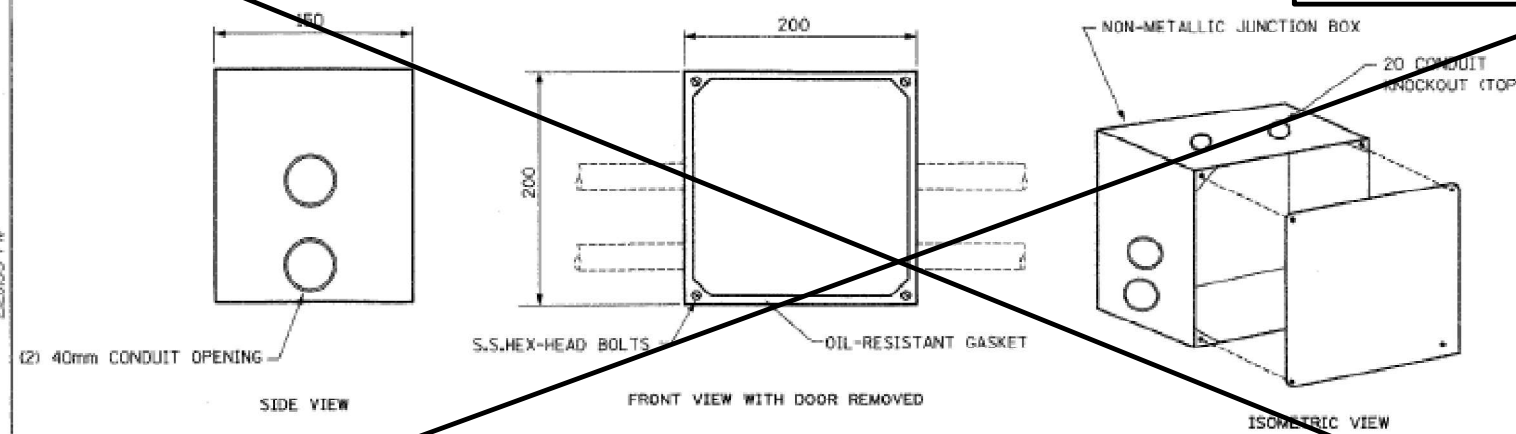
NOTES:

1. ALL MOUNTING HARDWARE, BOLTS AND NUTS SHALL BE STAINLESS STEEL. ALL NUTS AND BOLTS SHALL BE FACTORY COATED WITH ANTI-SEIZE COMPOUND.
2. ALL DIMENSIONS SHOWN ARE IN MILLIMETER, UNLESS OTHERWISE NOTED.
3. THE COVER OF THE JUNCTION BOX SHALL BE ARRANGED TO FIT FLUSH WITH THE WALL SURFACE.
4. THE TUNNEL LUMINAIRE, MOUNTING PLATE AND WALL BRACKET SHALL BE FURNISHED TO THE CONTRACTOR UNDER A SEPARATE CONTRACT.
5. FOR CROSS SECTION A-A, SEE LIGHTING SHEET 38A.
6. THE COST OF ATTACHING THE WALL BRACKET TO THE EMBEDDED CONCRETE INSERT FOR EITHER OPTION (INCLUDING ALL NECESSARY HARDWARE, NUTS AND BOLTS) SHALL BE INCLUDED IN THE PAY ITEM FOR TUNNEL LUMINAIRE, (INSTALL ONLY).
7. FOR CONCRETE INSERT AND WALL MOUNTING BRACKET DETAIL, SEE LIGHTING SHEET 38A.
8. THE LOCATION OF THE EMBEDDED CONCRETE INSERTS AND JUNCTION BOXES SHALL BE THE SAME FOR BOTH OPTIONS 1 & 2.

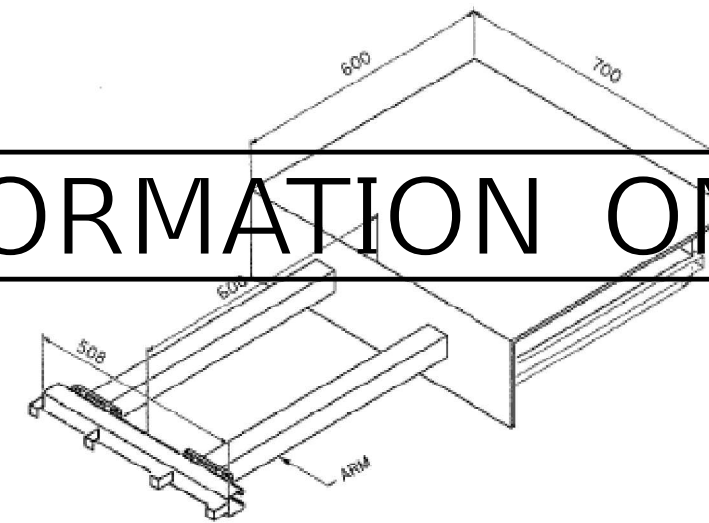


ELEVATION VIEW

FOR INFORMATION ONLY



NON-METALLIC EMBEDDED JUNCTION BOX (200X200X150)



ISOMETRIC VIEW (OPTION 1)

LIGHTING SHEET 38 OF 81

REVISIONS		ILLINOIS DEPARTMENT OF TRANSPORTATION	
NAME	DATE		
		PROPOSED TUNNEL LIGHTING RAMP F-6	
		DRAWN BY DJK	
		CHECKED BY MKR	
		DATE: 12/23/03	

ab alfred benesch & company
CONSULTING ENGINEERS
205 NORTH MICHIGAN AVENUE, CHICAGO, ILLINOIS 60601

USER NAME = SUSERS	DESIGNED -	REVISED -
PLOT SCALE = 5SCALES	DRAWN -	REVISED -
PLOT DATE = SDATES	CHECKED -	REVISED -
	DATE -	REVISED -

STATE OF ILLINOIS
DEPARTMENT OF TRANSPORTATION

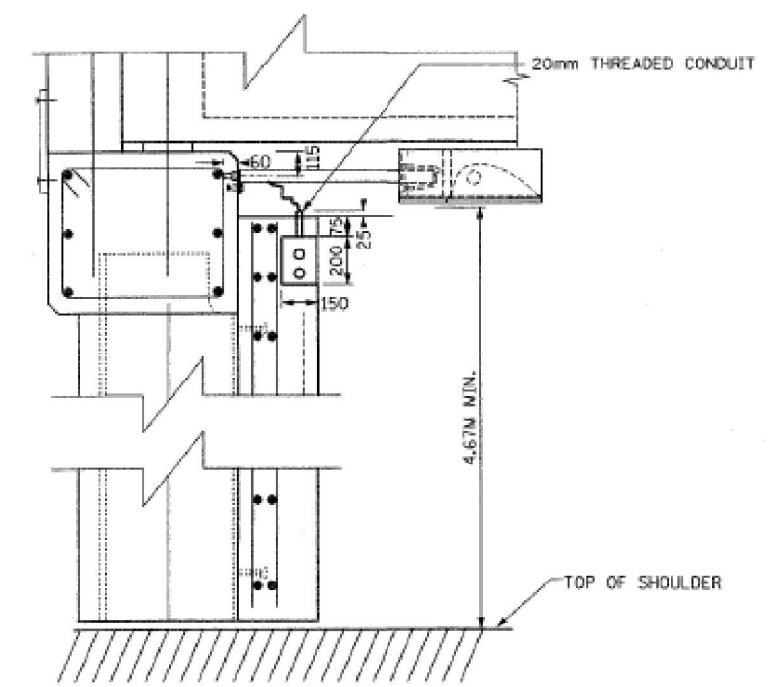
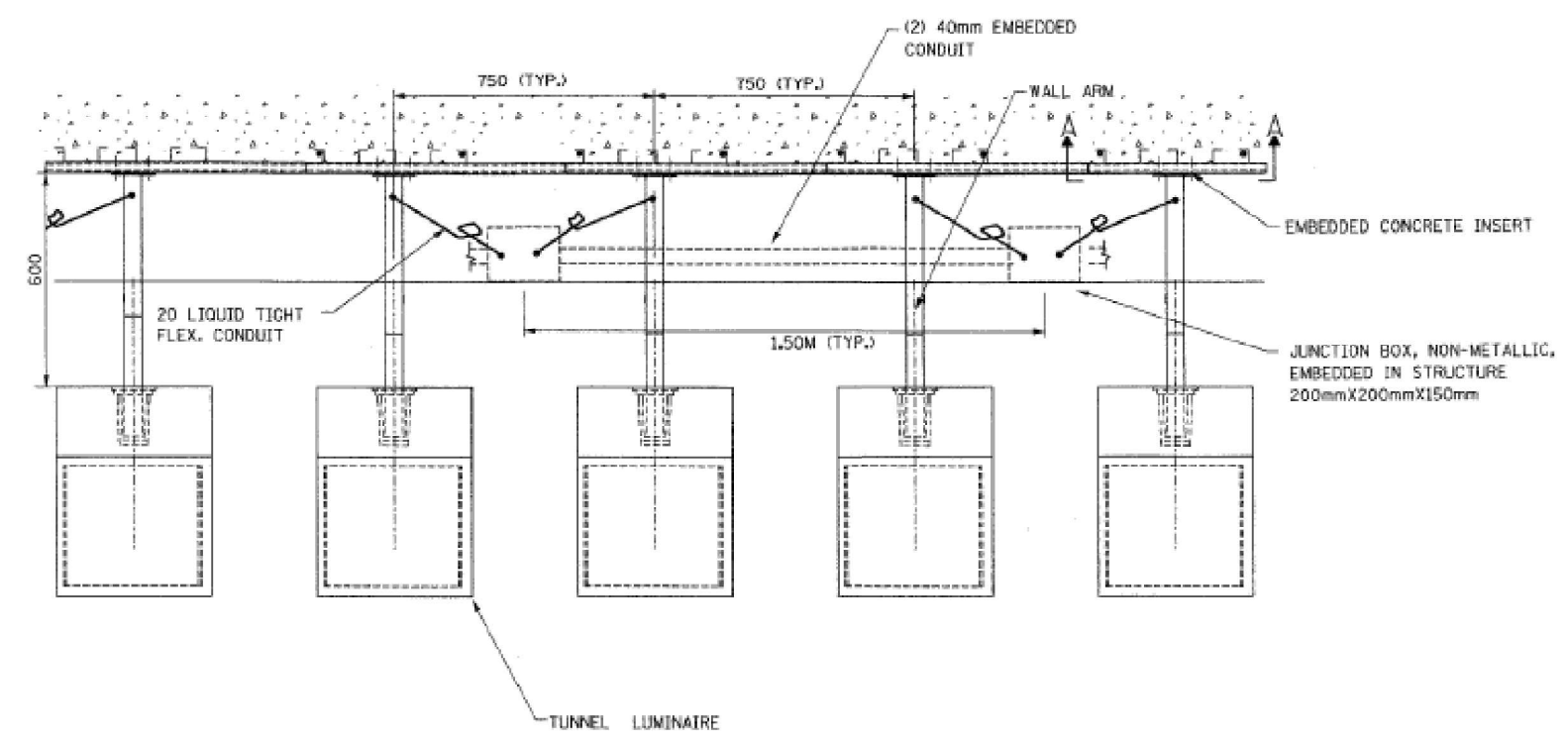
**1-74 WB RAMP F-6
TUNNEL LUMINAIRE REPLACEMENT**

SCALE: SHEET OF SHEETS STA. TO STA.

F.A.I. RTE.	SECTION	COUNTY	TOTAL SHEETS	SHEET NO.
74	72(1-8-9)L-1(10)L:(90-11)L	PEORIA, TAZEWELL	24	16
CONTRACT NO. 68K25				
ILLINOIS FED. AID PROJECT				

F.A.I. RTE.	SECTION	COUNTY	TOTAL SHEETS	SHEET NO.
74	72(8-9)F-6	PEORIA	24	17
STA.		TO STA.		
FED. ROAD DIST. NO.		ILLINOIS FED. AID PROJECT		

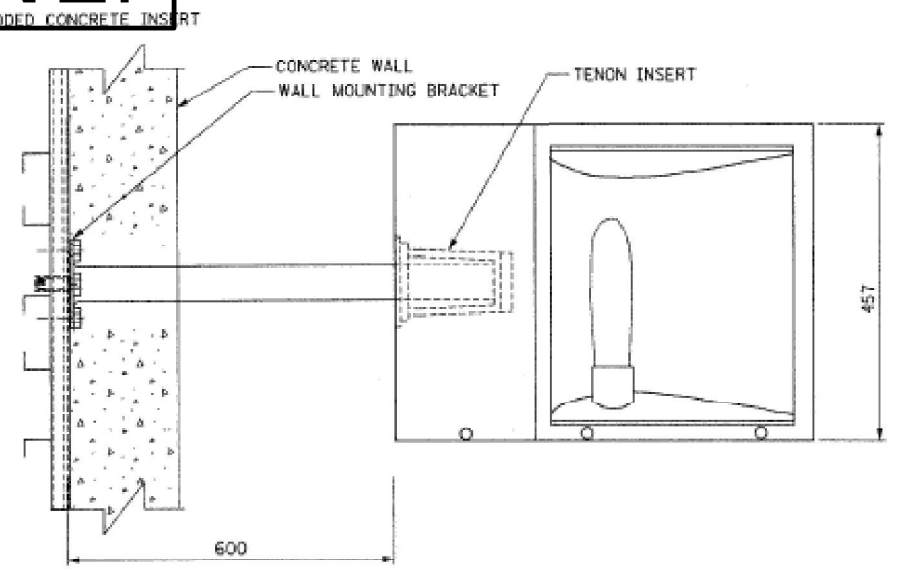
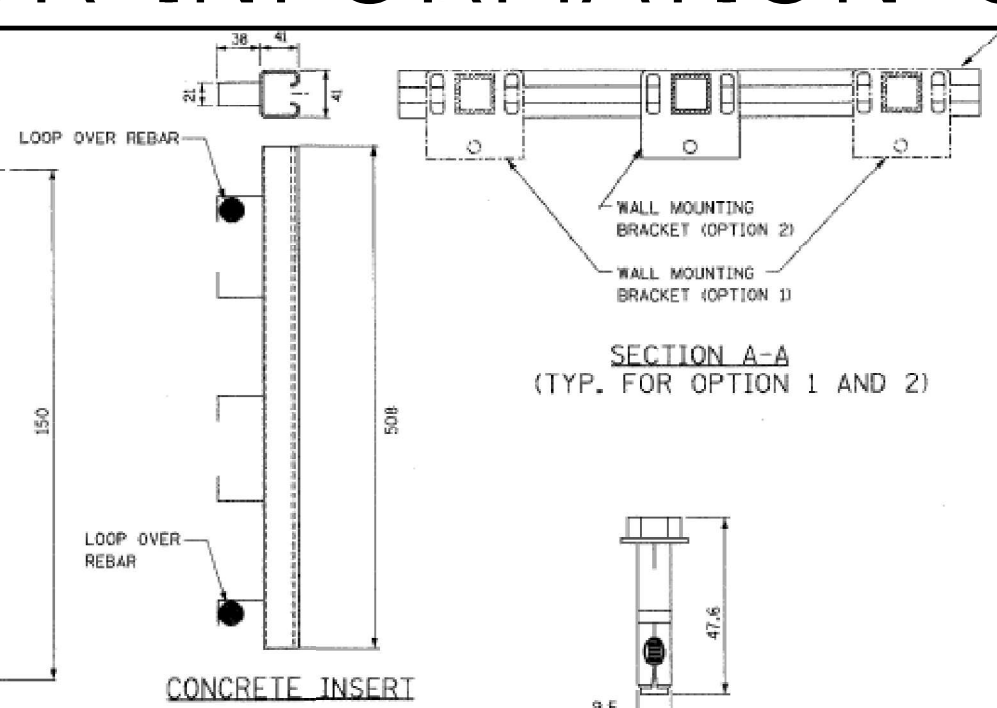
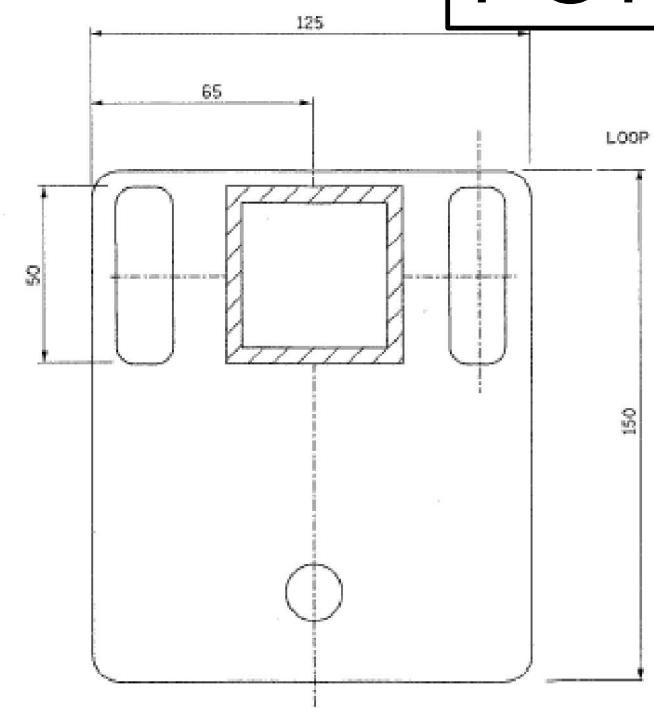
68198



OPTION-2: TUNNEL LUMINAIRE INSTALLATION LAYOUT- PLAN VIEW (TYPICAL)

LUMINAIRE ATTACHMENT - ELEVATION

FOR INFORMATION ONLY



WALL MOUNTING BRACKET

SECTION A-A (TYP. FOR OPTION 1 AND 2)

LUMINAIRE ATTACHMENT - PLAN (OPTION 2)

LIGHTING SHEET 38A OF 81

REVISIONS		ILLINOIS DEPARTMENT OF TRANSPORTATION
NAME	DATE	
		<p style="text-align: center;">PROPOSED TUNNEL LIGHTING RAMP F-6</p> <p style="text-align: right;">DRAWN BY DJK CHECKED BY MKR</p>

ab **alfred benesch & company**
CONSULTING ENGINEERS
205 NORTH MICHIGAN AVENUE, CHICAGO, ILLINOIS 60601

USER NAME = SUSERS	DESIGNED -	REVISED -
PLOT SCALE = SSCALES	DRAWN -	REVISED -
PLOT DATE = SDATES	CHECKED -	REVISED -
	DATE -	REVISED -

STATE OF ILLINOIS
DEPARTMENT OF TRANSPORTATION

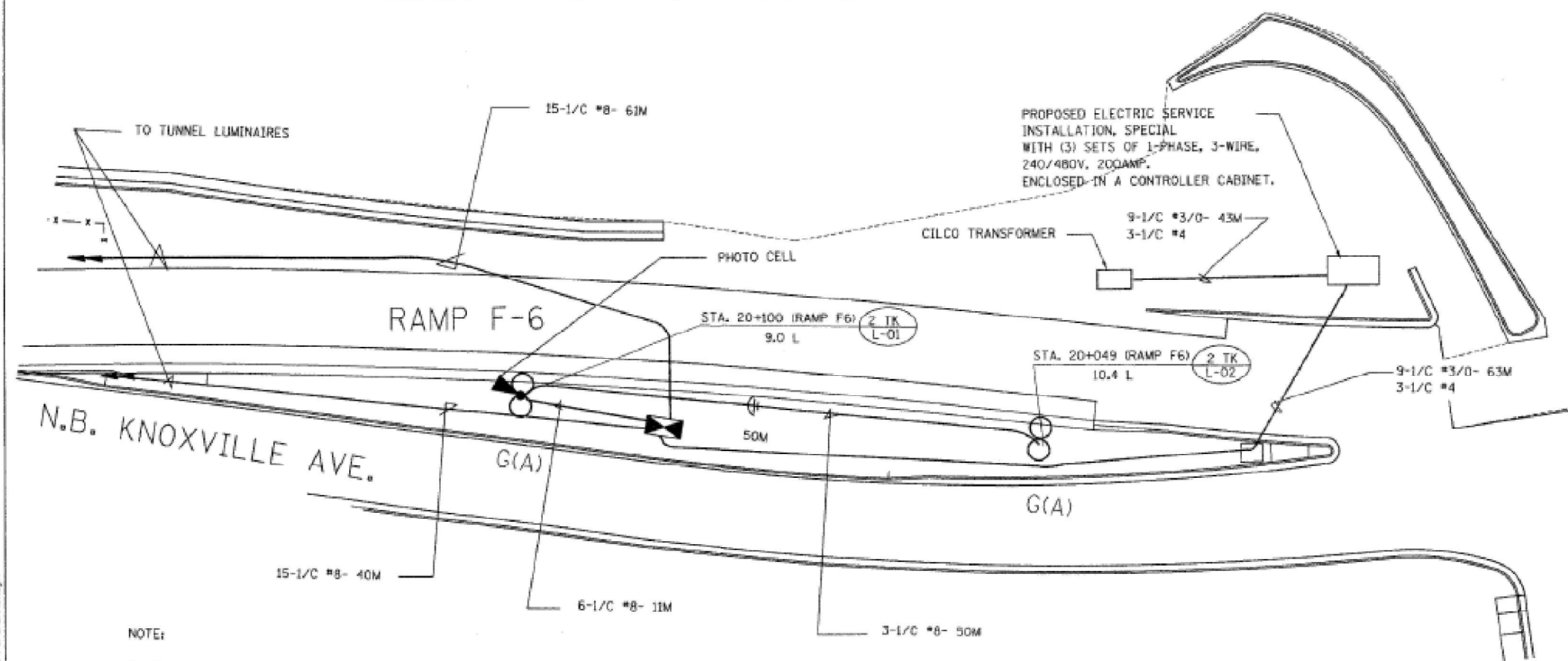
1-74 WB RAMP F-6
TUNNEL LUMINAIRE REPLACEMENT

SCALE: SHEET OF SHEETS STA. TO STA.

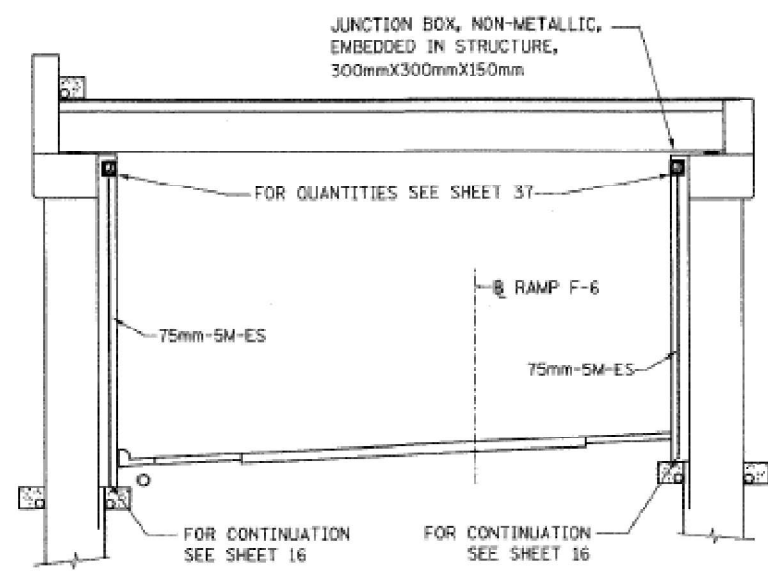
F.A.I. RTE.	SECTION	COUNTY	TOTAL SHEETS	SHEET NO.
74	72(8-9)F-6(101L);(90-11)L	PEORIA,TAZEWELL	24	17
				CONTRACT NO. 68K25
				ILLINOIS FED. AID PROJECT

MODEL NUMBER/NAME
FILE NAME: 0515

68198



- NOTE:
- 3-1/C # 8 FOR PHOTO CELL TO BE MOUNTED ON LIGHT POLE TK/L-01 (PHASE & NEUTRAL)
 - FOR CONDUIT, ELECTRIC SERVICE INSTALLATIONS, CONTROLLER AND CONTROLLER FOUNDATION QUANTITIES, SEE SHEET 16.



STREET LIGHTING-BILL OF MATERIAL-THIS SHEET

PAY ITEM	UNIT	QTY.
CONDUIT EMBEDDED IN STRUCTURE, 75mm DIA., PVC	METER	10.0
ELECTRIC CABLE IN CONDUIT, 600V (XLP-TYPE USE) 1/C NO. 8	METER	1731.0
ELECTRIC CABLE IN CONDUIT, 600V (XLP-TYPE USE) 1/C NO. 4	METER	318.0
ELECTRIC CABLE IN CONDUIT, 600V (XLP-TYPE USE) 1/C NO. 3/0	METER	954.0

FOR INFORMATION ONLY

LIGHTING SHEET 39 OF 81

REVISIONS		ILLINOIS DEPARTMENT OF TRANSPORTATION BRIDGE LIGHTING PLAN RAMP F-6 TUNNEL DRAWN BY DJK CHECKED BY MKR DATE: 12/23/03
NAME	DATE	



STATE OF ILLINOIS
DEPARTMENT OF TRANSPORTATION

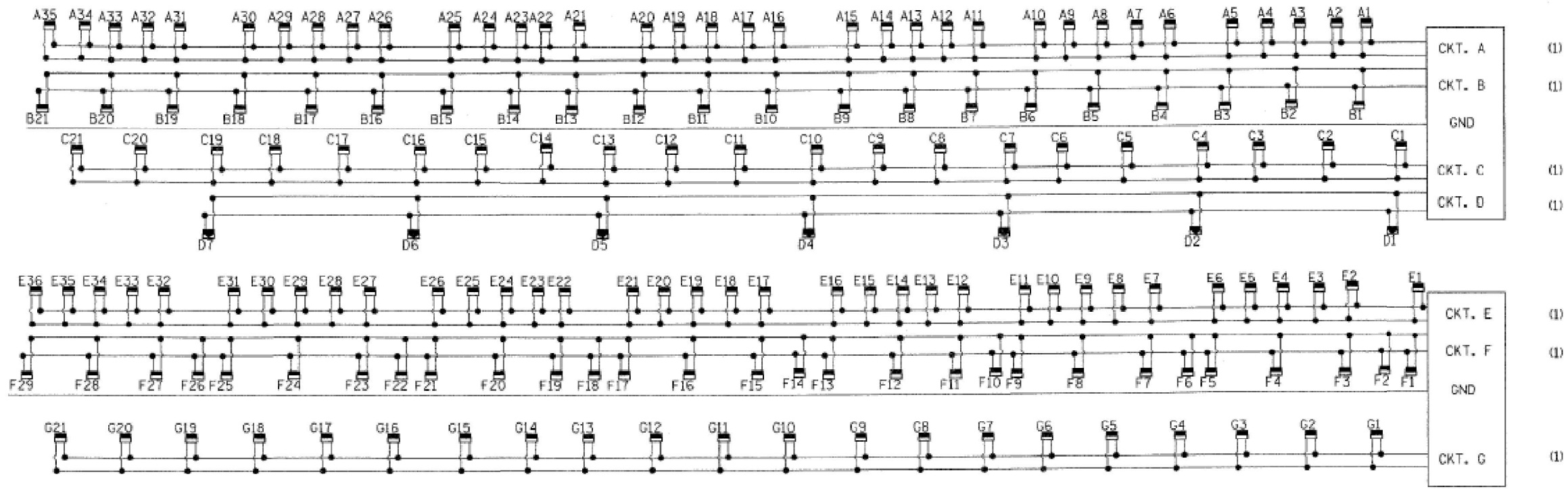
**I-74 WB RAMP F-6
TUNNEL LUMINAIRE REPLACEMENT**

USER NAME = SUSERS	DESIGNED -	REVISED -
PLOT SCALE = SCALES	DRAWN -	REVISED -
PLOT DATE = SDATES	CHECKED -	REVISED -
	DATE -	REVISED -

SCALE: SHEET OF SHEETS STA. TO STA.

MODEL NUMBERS
FILE NAMES, SHEETS

F.A.I. RTE.	SECTION	COUNTY	TOTAL SHEETS	SHEET NO.
74	72(7,8,9)-1R-2	PEORIA	2775	2577
STA. TO STA.		FED. ROAD DIST. NO. ILLINOIS FED. AID PROJECT		



68198

CKT. A	(1)
CKT. B	(1)
GND	
CKT. C	(1)
CKT. D	(1)
CKT. E	(1)
CKT. F	(1)
GND	
CKT. G	(1)

(1) 2-POLE, 50 AMP BREAKERS

CIRCUIT SCHEDULE

CONDUIT RUN	CKT	ELECTRIC CABLE	LENGTH (M)
1	A	2-1/C #8	135
	B	2-1/C #8	135
	GND	1/C #8	135
	C	2-1/C #8	132
2	D	2-1/C #8	119
	E	2-1/C #8	136
	F	2-1/C #8	137
	GRD	1/C #8	137
	G	2-1/C #8	134

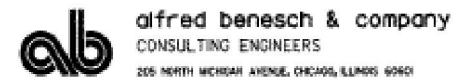
STREET LIGHTING - BILL OF MATERIALS (FOR INFORMATION ONLY)

PAY ITEM	UNIT	QUANTITY
ELECTRIC CABLE IN CONDUIT, 600V (XLP-TYPE USE) 1/C NO. 8	METER	2128.0

FOR INFORMATION ONLY

LIGHTING SHEET 40 OF 81

REVISIONS		ILLINOIS DEPARTMENT OF TRANSPORTATION
NAME	DATE	
		F-6 TUNNEL WIRING DIAGRAM
		DRAWN BY GHT
		CHECKED BY MKR
		DATE: 12/23/03



USER NAME = SUSERS	DESIGNED -	REVISED -
PLOT SCALE = \$SCALES	DRAWN -	REVISED -
PLOT DATE = \$DATES	CHECKED -	REVISED -
	DATE -	REVISED -

STATE OF ILLINOIS
DEPARTMENT OF TRANSPORTATION

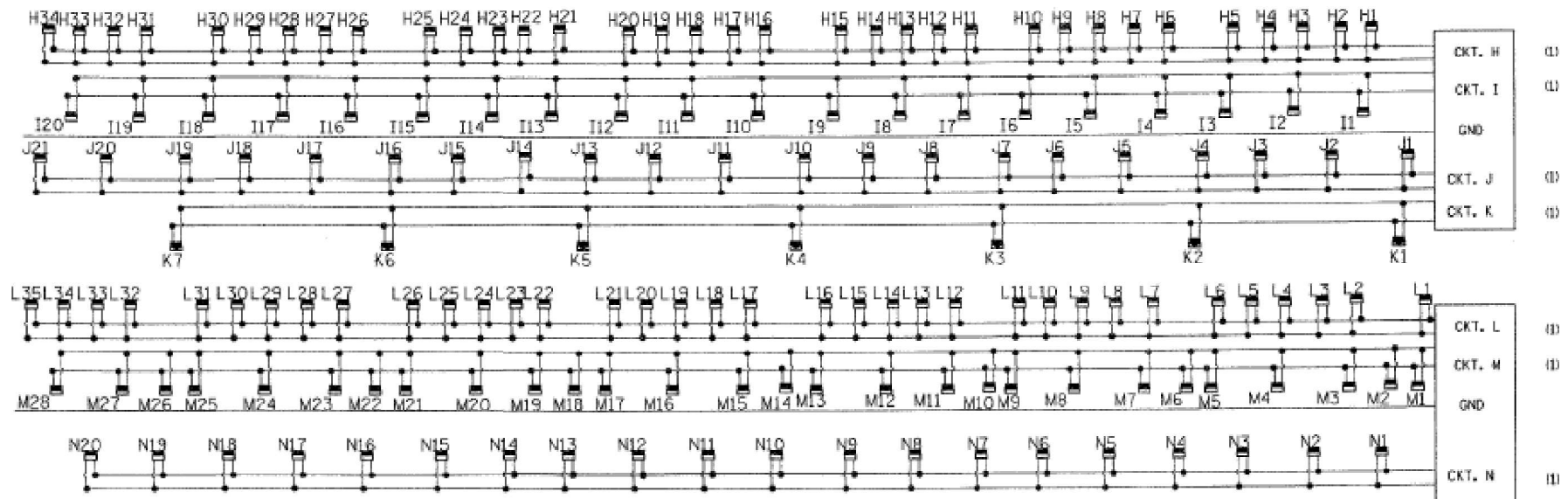
**I-74 WB RAMP F-6
TUNNEL LUMINAIRE REPLACEMENT**

F.A.I. RTE.	SECTION	COUNTY	TOTAL SHEETS	SHEET NO.
74	72((8-9)L-1,(10)L):(90-11)L	PEORIA,TAZEWELL	24	19
CONTRACT NO. 68K25				
ILLINOIS FED. AID PROJECT				

MODEL NUMBER/NAME
FILE NAME: 05125

F.A.I. RTE.	SECTION	COUNTY	TOTAL SHEETS	SHEET NO.
74	72(7,8,9)-DR-2	PEORIA	275	2075
STA.	TO STA.			
FED. ROAD DIST. NO.	ILLINOIS FED. AID PROJECT			

68198



CIRCUIT SCHEDULE

(1)- 2-POLE, 50 AMP BREAKERS

CONDUIT RUN	CKT	ELECTRIC CABLE	LENGTH (M)
3	H	2-1/C #8	131
	I	2-1/C #8	129
	GND	1/C #8	132
	J	2-1/C #8	132
	K	2-1/C #8	119
4	L	2-1/C #8	133
	M	2-1/C #8	131
	GRD	1/C #8	133
	N	2-1/C #8	127

STREET LIGHTING - BILL OF MATERIALS (FOR INFORMATION ONLY)

PAY ITEM	UNIT	QUANTITY
ELECTRIC CABLE IN CONDUIT, 600V (XLP-TYPE USE) 1/C NO. 8	METER	2069.0

FOR INFORMATION ONLY

LIGHTING SHEET 41 OF 81

REVISIONS		ILLINOIS DEPARTMENT OF TRANSPORTATION
NAME	DATE	
		F-6 TUNNEL WIRING DIAGRAM
		DRAWN BY GHT CHECKED BY MKR
		DATE: 12/23/03

ab alfred benesch & company
CONSULTING ENGINEERS
205 NORTH MORGAN AVENUE, CHICAGO, ILLINOIS 60607

USER NAME = \$USERS	DESIGNED -	REVISED -
PLOT SCALE = \$SCALES	DRAWN -	REVISED -
PLOT DATE = \$DATES	CHECKED -	REVISED -
	DATE -	REVISED -

STATE OF ILLINOIS
DEPARTMENT OF TRANSPORTATION

**I-74 WB RAMP F-6
TUNNEL LUMINAIRE REPLACEMENT**

SCALE: SHEET OF SHEETS STA. TO STA.

F.A.I. RTE.	SECTION	COUNTY	TOTAL SHEETS	SHEET NO.
74	72(8-9)L-1,(10)L:(90-11)L	PEORIA,TAZEWELL	24	20
CONTRACT NO. 68K25				
ILLINOIS FED. AID PROJECT				

MODEL NUMBER/NAME
FILE NAME: SLE15

11/2/03 11:27 AM

F.A.I. RTE.	SECTION	COUNTY	TOTAL SHEETS	SHEET NO.
74	72(7,8,9,9-DR-2)	PEORIA	2775	2579
STA.	TO STA.			
FED. ROAD DIST. NO.	ILLINOIS	FED. AID PROJECT		

68198

DESCRIPTION	PANEL BOARD														LIGHTING CRITERIA							
	PANEL BOARD #1					PANEL BOARD #2					PANEL BOARD #3				ILLUMINANCE			LUMINANCE				SIV
	CKT A	CKT B	CKT C	CKT H	CKT I	CKT D	CKT E	CKT J	CKT K	CKT L	CKT F	CKT G	CKT M	CKT N	AVERAGE ILLUMINANCE (FC)	UNIFORMITY (AVE. TO MIN)	UNIFORMITY (MAX. TO MIN)	AVERAGE LUMINANCE (CD/SQ.M)	UNIFORMITY (AVE. TO MIN)	UNIFORMITY (MAX. TO MIN)	MAXIMUM LV TO LANG RATIO	
TOTAL NO. OF DAY LUMINAIRES (400W)	35	21	21	34	20	0	36	21	0	35	29	21	28	20								
TOTAL LOAD OF DAY LUMINAIRES (KILOWATTS)	16.0	9.6	9.6	15.5	9.1	0.0	16.4	9.6	0.0	16.0	13.2	9.6	12.8	9.1								
TOTAL NO. OF NIGHT LUMINAIRES (100W)	0	0	0	0	0	7	0	0	7	0	0	0	0	0								
TOTAL LOAD OF NIGHT LUMINAIRES (KILOWATTS)	0.0	0.0	0.0	0.0	0.0	0.8	0.0	0.0	0.8	0.0	0.0	0.0	0.0	0.0								
TOTAL NO. OF "ON" LUMINAIRES DURING LIGHT LEVEL # 1 (AMBIENT LIGHT > 3000FC)	35	21	21	34	20	0	36	21	0	35	29	21	28	20	195	1.09	1.24	201	1.09	1.21	0.06	5.67
TOTAL NO. OF "ON" LUMINAIRES DURING LIGHT LEVEL # 2 (AMBIENT LIGHT > 1000FC)	0	21	21	0	20	0	0	21	0	0	29	21	28	20	98	1.09	1.24	101	1.09	1.21	0.06	5.43
TOTAL NO. OF "ON" LUMINAIRES DURING LIGHT LEVEL # 3 (AMBIENT LIGHT > 100FC)	0	0	21	0	0	7	0	21	7	0	0	21	0	20	43	1.10	1.31	50	1.09	1.24	0.06	5.07
TOTAL NO. OF "ON" LUMINAIRES DURING LIGHT LEVEL # 4 (AMBIENT LIGHT < 100FC)	0	0	0	0	0	7	0	0	7	0	0	0	0	0	4.54	1.75	3.42	2.6	1.3	2.2	0.2	8.59

FOR INFORMATION ONLY

LIGHTING SHEET 42 OF 81

REVISIONS		ILLINOIS DEPARTMENT OF TRANSPORTATION
NAME	DATE	
		F-6 TUNNEL LIGHTING PANEL BOARD DETAIL

DRAWN BY GHT
CHECKED BY MGR

DATE: 12/23/03

ab alfred benesch & company
CONSULTING ENGINEERS
205 NORTH MICHIGAN AVENUE, CHICAGO, ILLINOIS 60601

USER NAME = SUSERS	DESIGNED -	REVISED -
PLOT SCALE = \$SCALES	DRAWN -	REVISED -
PLOT DATE = \$DATES	CHECKED -	REVISED -
	DATE -	REVISED -

STATE OF ILLINOIS
DEPARTMENT OF TRANSPORTATION

**I-74 WB RAMP F-6
TUNNEL LUMINAIRE REPLACEMENT**

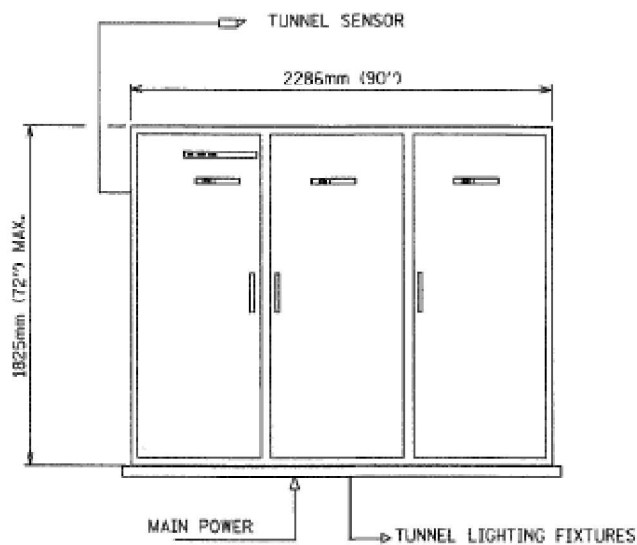
SCALE: SHEET OF SHEETS STA. TO STA.

F.A.I. RTE.	SECTION	COUNTY	TOTAL SHEETS	SHEET NO.
74	72(8-9)L-1,(10)L;(90-11)L	PEORIA,TAZEWELL	24	21
CONTRACT NO. 68K25				
		ILLINOIS	FED. AID PROJECT	

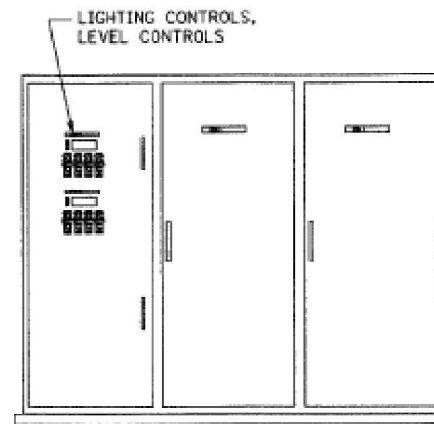
MODEL: 4400LUMINAIRES
FILE NAME: 2579.DWG

F.A.I. RTE.	SECTION	COUNTY	TOTAL SHEETS	SHEET NO.
74	721F.0.9.9-1R-2	PEORIA	2715	2530
STA.		TO STA.		
FED. ROAD DIST. NO.		ILLINOIS	FED. AID PROJECT	

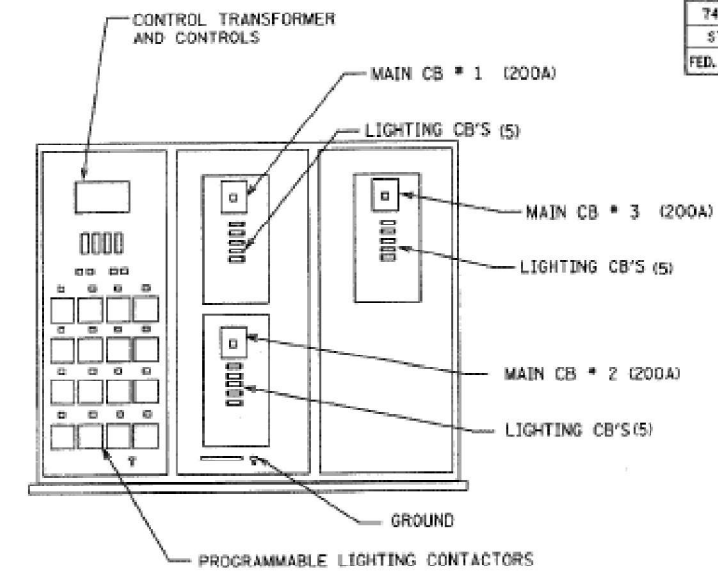
68198



EXTERIOR DOORS

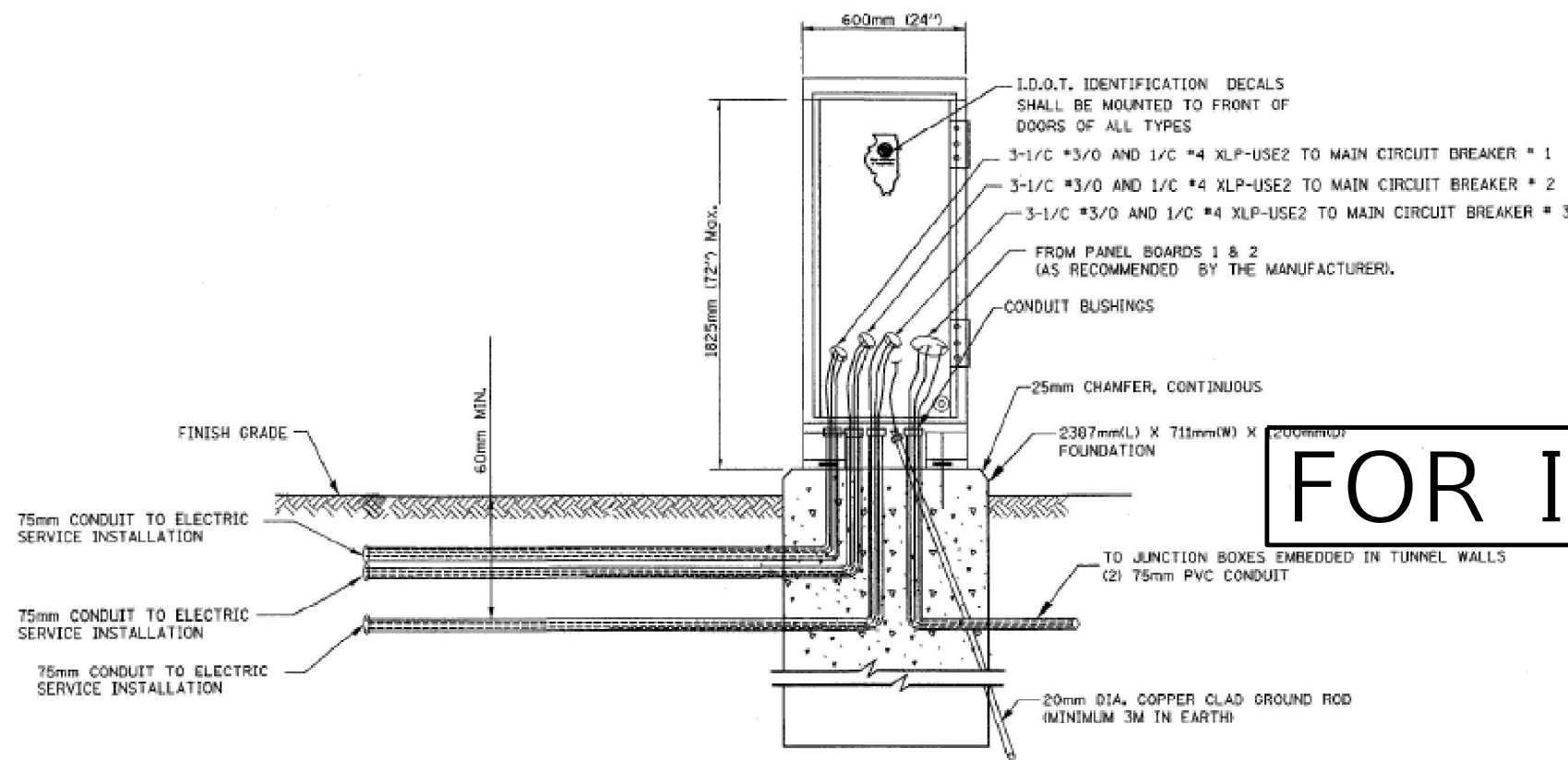


EXTERIOR DOOR REMOVED FROM SECTION TO SHOW INTERIOR DOOR



SECTION 1, 2 & 3 DOORS REMOVED WITH SECTION 1 INTERIOR DOOR REMOVED

FRONT VIEW



SIDE VIEW

TUNNEL LIGHTING CONTROLLER CABINET AND FOUNDATION DETAIL (NOT TO SCALE)

NOTES:

1. TUNNEL LIGHTING CONTROLLER SCHEMATIC AND WIRING DETAIL AS PROVIDED BY THE MANUFACTURER.

FOR INFORMATION ONLY

LIGHTING SHEET 43 OF 81

REVISIONS	
NAME	DATE

ILLINOIS DEPARTMENT OF TRANSPORTATION

TUNNEL CONTROLLER DETAILS

DRAWN BY DJK
CHECKED BY MKR

DATE: 12/23/03

ab **alfred benesch & company**
CONSULTING ENGINEERS
205 NORTH MICHIGAN AVENUE, CHICAGO, ILLINOIS 60601

USER NAME = SUSERS	DESIGNED -	REVISED -
PLOT SCALE = 5/8"=1'	DRAWN -	REVISED -
PLOT DATE = 5/24/03	CHECKED -	REVISED -
	DATE -	REVISED -

STATE OF ILLINOIS
DEPARTMENT OF TRANSPORTATION

1-74 WB RAMP F-6
TUNNEL LUMINAIRE REPLACEMENT

SCALE: SHEET OF SHEETS STA. TO STA.

F.A.I. RTE.	SECTION	COUNTY	TOTAL SHEETS	SHEET NO.
74	721F.0.9.9-1(10L):(90-11)L	PEORIA, TAZEWELL	24	22
CONTRACT NO. 68K25			ILLINOIS FED. AID PROJECT	



Luminaire Performance Table

Project

Date	Contract Number	Section Number	County
06/24/25	68K25	72[(8-9)L-1,(10)L];(90-11)L	Peoria

Marked Route Number	Municipality
I-74	Peoria

Roadway

Lane Width (see note 4)	Number and Direction of lanes	Median Width	Surface Classification	Q-Zero Value
12 ft	5 Lanes in Each Direction	28 ft	R3	0.07

Structure

Mounting Height	Arm Length	Set-Back (see note 1)	Number of Luminaires
100 ft	1 ft	N/A	8 - (see aiming diagram)

Luminaire

Description	Transverse Distribution	Lateral Distribution
High Mast Luminaire, Output Designation H	Type III	Medium

Total Light Loss Factor (LLF)	B-J-G Rating	Shields	Dimming Protocol
Refer to Notes 6 and 7	U=0	N/A	0-10V

Layout

Spacing	Configuration
425 ft	Median Mounted

Performance (see notes 5 and 6)

Average Illuminance, E_{AVE} (fc)	Uniformity Ratio, E_{AVE}/E_{MIN}
≥ 0.9	$\leq 3:1$

Average Luminance, L_{AVE} (cd/m ²)	Uniformity Ratio, L_{AVE}/L_{MIN}	Uniformity Ratio, L_{MAX}/L_{MIN}	Veiling Luminance Ratio, L_W/L_{AVE}
≥ 0.6	$\leq 3.5:1$	$\leq 5:1$	$\leq 0.3:1$

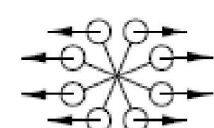
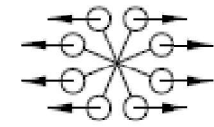
Light Trespass (see notes 5 and 7)

Distance to ROW (behind pole)	Max. Horizontal Illuminance at ROW, E_H	Max. Vertical Illuminance at ROW, E_V
N/A	N/A	N/A

Notes

1. Set-Back is from Edge of Pavement (white line).
2. Lighting calculations shall be performed with all luminaires oriented toward and perpendicular to the roadway.
3. Performance requirements shall be the minimum acceptable standards of photometric performance for the luminaire, based on the given conditions listed above.
4. Lane width is the width of each individual lane, not to be confused with total roadway width.
5. Compliance with performance criteria shall be held to one significant digit.
6. Photometric calculations for roadways shall be performed with a total light loss factor of 0.7
7. Light trespass calculations shall be performed with a total light loss factor of 1.0 and with horizontal calculations performed at grade and vertical calculations performed with calculation points located three feet above grade.
8. Luminaire performance table is intended to define the luminaire and does not necessarily match any specific roadway geometry, mounting height, setback, or arm length.

--



LUMINAIRE AIMING DIAGRAM

Printed 06/25/25

BDE 5630 (Rev. 06/06/24)

MODEL NUMBER: LUMINARMS
FILE NAME: 68K25

USER NAME = SUSERS	DESIGNED -	REVISED -
PLOT SCALE = SCALES	DRAWN -	REVISED -
PLOT DATE = SDATES	CHECKED -	REVISED -
	DATE -	REVISED -

STATE OF ILLINOIS
DEPARTMENT OF TRANSPORTATION

LUMINAIRE PERFORMANCE TABLES
I-74 HIGH MAST

SCALE: SHEET OF SHEETS STA. TO STA.

F.A.I. RTE.	SECTION	COUNTY	TOTAL SHEETS	SHEET NO.
74	72[(8-9)L-1,(10)L];(90-11)L	PEORIA,TAZEWELL	24	23
CONTRACT NO. 68K25				
ILLINOIS FED. AID PROJECT				



Luminaire Performance Table

Project Date: 04/21/25 Contract Number: 68K25 Section Number: 72[(8-9)L-1,(10)L];(90-11)L County: Peoria

Marked Route Number: I-74 - Ramp F6 Tunnel - Nighttime Lighting Municipality: Peoria

Roadway Lane Width: 12 Number and Direction of lanes: 2 lanes in same direction Median Width: NA Surface Classification: R3 Q-Zero Value: 0.07

Structure Mounting Height: 15.25 Arm Length: NA Set-Back: 5 Number of Luminaires: NA

Luminaire Description: Tunnel Luminaire 1 - Lumen Output ≤ 7,500 Transverse Distribution: Type III Lateral Distribution: Short

Total Light Loss Factor (LLF): 0.65 B-U-G Rating: NA Shields: NA Dimming Protocol: 0-10V

Layout Spacing: 30ft Configuration: Opposite

Performance (see notes 5 and 6) Average Illuminance, EAVE (fc): N/A Uniformity Ratio, EAVE/EMIN: N/A

Average Luminance, LAVE (cd/m²): ≥ 2.5 Uniformity Ratio, LAVE/LMIN: ≤ 2.0 Uniformity Ratio, LMAX/LMIN: ≤ 3.5 Veiling Luminance Ratio, LV/LAVE: ≤ 0.2

Light Trespass (see notes 5 and 7) Distance to ROW (behind pole): NA Max. Horizontal Illuminance at ROW, EH: N/A Max. Vertical Illuminance at ROW, EV: N/A

- Notes: 1. Set-Back is from Edge of Pavement (white line). 2. Lighting calculations shall be performed with all luminaires oriented toward and perpendicular to the roadway. 3. Performance requirements shall be the minimum acceptable standards of photometric performance for the luminaire, based on the given conditions listed above. 4. Lane width is the width of each individual lane, not to be confused with total roadway width. 5. Compliance with performance criteria shall be held to one significant digit. 6. Photometric calculations for roadways shall be performed with a total light loss factor of 0.7. 7. Light trespass calculations shall be performed with a total light loss factor of 1.0 and with horizontal calculations performed at grade and vertical calculations performed with calculation points located three feet above grade. 8. Luminaire performance table is intended to define the luminaire and does not necessarily match any specific roadway geometry, mounting height, setback, or arm length.

Delete Note 6. Tunnel Lighting Calculations Parameters: Approximate tunnel height=16ft; tunnel width=40ft; tunnel length= 460ft

Printed 06/25/25

BDE 5630 (Rev. 06/06/24)



Luminaire Performance Table

Project Date: 04/21/25 Contract Number: 68K25 Section Number: 72[(8-9)L-1,(10)L];(90-11)L County: Peoria

Marked Route Number: I-74 - Ramp F6 Tunnel - Daytime Lighting Municipality: Peoria

Roadway Lane Width: 12 Number and Direction of lanes: 2 lanes in same direction Median Width: NA Surface Classification: R3 Q-Zero Value: 0.07

Structure Mounting Height: 15.25 Arm Length: NA Set-Back: 5 Number of Luminaires: NA

Luminaire Description: Tunnel Luminaire 2 - Lumen Output ≤ 22,000 Transverse Distribution: Type III Lateral Distribution: Short

Total Light Loss Factor (LLF): 0.65 B-U-G Rating: NA Shields: NA Dimming Protocol: 0-10V

Layout Spacing: 3ft Configuration: Opposite

Performance (see notes 5 and 6) Average Illuminance, EAVE (fc): N/A Uniformity Ratio, EAVE/EMIN: N/A

Average Luminance, LAVE (cd/m²): ≥ 100 Uniformity Ratio, LAVE/LMIN: ≤ 2.0 Uniformity Ratio, LMAX/LMIN: ≤ 3.5 Veiling Luminance Ratio, LV/LAVE: ≤ 0.2

Light Trespass (see notes 5 and 7) Distance to ROW (behind pole): NA Max. Horizontal Illuminance at ROW, EH: N/A Max. Vertical Illuminance at ROW, EV: N/A

- Notes: 1. Set-Back is from Edge of Pavement (white line). 2. Lighting calculations shall be performed with all luminaires oriented toward and perpendicular to the roadway. 3. Performance requirements shall be the minimum acceptable standards of photometric performance for the luminaire, based on the given conditions listed above. 4. Lane width is the width of each individual lane, not to be confused with total roadway width. 5. Compliance with performance criteria shall be held to one significant digit. 6. Photometric calculations for roadways shall be performed with a total light loss factor of 0.7. 7. Light trespass calculations shall be performed with a total light loss factor of 1.0 and with horizontal calculations performed at grade and vertical calculations performed with calculation points located three feet above grade. 8. Luminaire performance table is intended to define the luminaire and does not necessarily match any specific roadway geometry, mounting height, setback, or arm length.

Delete Note 6. Tunnel Lighting Calculations Parameters: Approximate tunnel height=16ft; tunnel width=40ft; tunnel length= 460ft

Printed 06/25/25

BDE 5630 (Rev. 06/06/24)



Luminaire Performance Table

Project Date: 07/14/25 Contract Number: 68K25 Section Number: 72[(8-9)L-1,(10)L];(90-11)L County: Peoria

Marked Route Number: I-74 Municipality: Peoria

Roadway Lane Width: 12 FT Number and Direction of lanes: 2 LANES IN 1 DIRECTION Median Width: N/A Surface Classification: R3 Q-Zero Value: 0.07

Structure Mounting Height: 22 FT Arm Length: N/A Set-Back: 0 FT Number of Luminaires: N/A

Luminaire Description: UNDERPASS, LED, OUTPUT D Transverse Distribution: TYPE III Lateral Distribution: Medium

Total Light Loss Factor (LLF): Refer to Notes 6 and 7 B-U-G Rating: U=0 Shields: N/A Dimming Protocol: 0-10V

Layout Spacing: 70 FT Configuration: Single Sided

Performance (see notes 5 and 6) Average Illuminance, EAVE (fc): N/A Uniformity Ratio, EAVE/EMIN: N/A

Average Luminance, LAVE (cd/m²): ≥ 0.8 Uniformity Ratio, LAVE/LMIN: ≤ 3.5:1 Uniformity Ratio, LMAX/LMIN: ≤ 6:1 Veiling Luminance Ratio, LV/LAVE: ≤ 0.3:1

Light Trespass (see notes 5 and 7) Distance to ROW (behind pole): N/A Max. Horizontal Illuminance at ROW, EH: N/A Max. Vertical Illuminance at ROW, EV: N/A

- Notes: 1. Set-Back is from Edge of Pavement (white line). 2. Lighting calculations shall be performed with all luminaires oriented toward and perpendicular to the roadway. 3. Performance requirements shall be the minimum acceptable standards of photometric performance for the luminaire, based on the given conditions listed above. 4. Lane width is the width of each individual lane, not to be confused with total roadway width. 5. Compliance with performance criteria shall be held to one significant digit. 6. Photometric calculations for roadways shall be performed with a total light loss factor of 0.7. 7. Light trespass calculations shall be performed with a total light loss factor of 1.0 and with horizontal calculations performed at grade and vertical calculations performed with calculation points located three feet above grade. 8. Luminaire performance table is intended to define the luminaire and does not necessarily match any specific roadway geometry, mounting height, setback, or arm length.

Printed 07/21/25

BDE 5630 (Rev. 06/06/24)

MODEL NUMBER: N/A
FILE NAME: 68K25

Table with 4 columns: USER NAME, DESIGNED, CHECKED, DATE. Values include \$USERS, \$SCALE\$, \$DATE\$.

STATE OF ILLINOIS DEPARTMENT OF TRANSPORTATION

LUMINAIRE PERFORMANCE TABLES I-74 WB RAMP F6 TUNNEL & UNDERPASS LUMINAIRE

Table with 5 columns: F.A.I. RTE., SECTION, COUNTY, TOTAL SHEETS, SHEET NO. Values include 74, 72[(8-9)L-1,(10)L];(90-11)L, PEORIA, TAZEWEILL, 24, 24.

SCALE: SHEET OF SHEETS STA. TO STA.

ILLINOIS FED. AID PROJECT