

INDEX OF SHEETS

1	COVER SHEET
2	INDEX OF SHEETS, LIST OF HIGHWAY STANDARDS, GENERAL NOTES
3-9	SUMMARY OF QUANTITIES
10	ALIGNMENT
11	SCHEDULE OF QUANTITIES
12-13	EXISTING AND PROPOSED ROADWAY PLAN
14-17	MAINTENANCE OF TRAFFIC PLANS
18	EROSION AND SEDIMENT CONTROL PLAN
19	PAVEMENT MARKING PLANS
20-45	STRUCTURAL PLANS
46	IDOT D1 STANDARD RUMBLE STRIPS FOR CENTERLINE, NON-FREEWAY (BD-55)
47	IDOT D1 STANDARD TRAFFIC CONTROL AND PROTECTION FOR SIDEROADS, INTERSECTIONS AND DRIVEWAYS (TC-10)
48	IDOT D1 STANDARD TYPICAL APPLICATIONS - RAISED REFLECTIVE PAVEMENT MARKERS (SNOW-PLOW RESISTANT) (TC-11)
49	IDOT DISTRICT ONE TYPICAL PAVEMENT MARKINGS (TC-13)
50	IDOT D1 STANDARD TRAFFIC CONTROL AND PROTECTION AT TURN BAYS (TC-14)
51	IDOT D1 STANDARD SHORT TERM PAVEMENT MARKING LETTERS AND SYMBOLS (TC-16)
51A	IDOT D1 STANDARD ARTERIAL ROAD INFORMATION SIGN (TC-22)
51B	IDOT D1 STANDARD DRIVEWAY ENTRANCE SIGNING (TC-26)

COMMITMENTS

NO COMMITMENTS

LIST OF HIGHWAY STANDARDS

STANDARD DESCRIPTION
NUMBER

000001-08	STANDARD SYMBOLS, ABBREVIATIONS AND PATTERNS
001001-02	AREAS OF REINFORCEMENT BARS
001006	DECIMAL EQUIVALENTS OF AN INCH AND FOOT
280001-07	TEMPORARY EROSION CONTROL SYSTEMS
420001-10	PAVEMENT JOINTS
424016-06	MID-BLOCK CURB RAMPS FOR SIDEWALKS
442101-09	CLASS B PATCHES
606001-08	CONCRETE CURB TYPE B AND COMBINATION CONCRETE CURB AND GUTTER
631031-18	TRAFFIC BARRIER TERMINAL, TYPE 6
701101-05	OFF-ROAD OPERATIONS, MULTILANE, 15' TO 24" FROM PAVEMENT EDGE
701106-02	OFF-ROAD OPERATIONS, MULTILANE, MORE THAN 15' AWAY
701301-04	LANE CLOSURE, 2L, 2W, SHORT TIME OPERATIONS
701311-03	LANE CLOSURE, 2L, 2W, MOVING OPERATIONS - DAY ONLY
701427-05	LANE CLOSURE, MULTILANE, INTERMITTENT OR MOVING OPERATION, FOR SPEEDS ≤ 40 MPH
701606-10	URBAN SINGLE LANE CLOSURE, 2W WITH MOUNTABLE MEDIAN
701611-01	URBAN HALF ROAD CLOSURE, MULTILANE, 2W WITH MOUNTABLE MEDIAN
701701-10	URBAN LANE CLOSURE, MULTILANE INTERSECTION
701801-06	SIDEWALK, CORNER OR CROSSWALK CLOSURE
701901-10	TRAFFIC CONTROL DEVICES
704001-08	TEMPORARY CONCRETE BARRIER
782006-01	GUARDRAIL AND BARRIER WALL REFLECTOR MOUNTING DETAILS

LIST OF DISTRICT 1 DETAILS

DETAIL DESCRIPTION
NUMBER

BD-55	RUMBLE STRIPS FOR CENTERLINE, NON-FREEWAY
TC-10	TRAFFIC CONTROL AND PROTECTION FOR SIDE ROADS, INTERSECTIONS AND DRIVEWAYS
TC-11	TYPICAL APPLICATIONS - RAISED REFLECTIVE PAVEMENT MARKERS (SNOW-PLOW RESISTANT)
TC-13	DISTRICT ONE TYPICAL PAVEMENT MARKINGS
TC-14	TRAFFIC CONTROL AND PROTECTION AT TURN BAYS (TO REMAIN OPEN TO TRAFFIC)
TC-16	SHORT TERM PAVEMENT MARKING LETTERS AND SYMBOLS
TC-22	ARTERIAL ROAD INFORMATION SIGN
TC-26	DRIVEWAY ENTRANCE SIGNING

GENERAL NOTES

1. BEFORE STARTING ANY EXCAVATION, THE CONTRACTOR SHALL CALL JOINT UTILITY LOCATION INFORMATION FOR EXCAVATION (J.U.L.I.E.) AT 1-800-892-0123 OR 811 FOR FIELD LOCATIONS OF BURIED UTILITIES (48 HOURS NOTIFICATION IS REQUIRED).
2. THE CONTRACTOR SHALL COORDINATE CONSTRUCTION ACTIVITIES WITH UTILITY COMPANIES AND VILLAGE OF SCHILLER PARK.
3. FOR STABILIZATION, ALL TYPE III BARRICADES SHALL REQUIRE A MINIMUM OF FOUR SANDBAGS PER BARRICADE.
4. THE CONTRACTOR SHALL UTILIZE EXTREME CAUTION WHEN DIGGING ADJACENT TO EXISTING UTILITIES AND FACILITIES. UTILITY LOCATION INFORMATION NEEDS TO BE FIELD VERIFIED PRIOR TO EXCAVATION OR CONSTRUCTION OF THE WORK.
5. THE CONTRACTOR SHALL CONDUCT HIS/HER OWN INVESTIGATIONS INTO THE LOCATION, SIZE, DEPTH, AND NATURE OF ANY AND ALL EXISTING UTILITIES WHICH MAY INTERFERE WITH THE WORK UNDER THE CONTRACT. ANY EXISTING UTILITIES WHICH ARE TO REMAIN IN SERVICE SHALL BE FULLY PROTECTED BY THE CONTRACTOR PER THE UTILITIES REQUIREMENTS.
6. SAW CUTTING WILL BE REQUIRED FOR ALL REMOVAL ITEMS LISTED IN SECTION 440 OF THE STANDARD SPECIFICATIONS, SHOWN IN THE PLANS, AND AS DIRECTED BY THE ENGINEER. SAW CUT WILL BE CONSIDERED INCLUDED IN COST OF REMOVAL ITEM.
7. THE CONTRACTOR SHALL CONFIRM THE TEMPORARY EROSION CONTROL MEASURES ARE IN PLACE IN THE CURRENT WORK AREA BEFORE MOVING TO A DIFFERENT WORK LOCATION AS SPECIFIED HEREIN AND AS DETERMINED BY THE RESIDENT ENGINEER.
8. THE CONTRACTOR WILL NOT BE ALLOWED TO SETUP A YARD OR FIELD OFFICE ON PRIVATE, VILLAGE OR COUNTY PROPERTY WITHOUT WRITTEN PERMISSION FROM SAID OWNER AND THE ENGINEER.
9. THE CONTRACTOR SHALL USE CARE IN GRADING OR EXCAVATION NEAR ANY AND ALL EXISTING ITEMS WHICH WILL NOT BE REMOVED. ANY DAMAGE TO EXISTING ITEMS BY THE CONTRACTOR SHALL BE REPAIRED BY THE CONTRACTOR AT HIS/HER EXPENSE.
10. THE CONTRACTORS SHALL COMPLY WITH ALL STATE REGULATIONS REGARDING AIR, WATER, AND NOISE POLLUTION.
11. AT THE TIME OF THE PRECONSTRUCTION MEETING, THE CONTRACTOR SHALL SUBMIT FOR APPROVAL THE PROPOSED CONCRETE WASHOUT LOCATIONS. RUNOFF FROM WASH AREA SHALL BE CONTAINED IN DESIGNATED AREA SO THAT RUNOFF DOES NOT REACH OUTSIDE OF THE DESIGNATED AREA.
12. THE CONTRACTOR IS RESPONSIBLE FOR INSTALLATION OF ANY ADDITIONAL EROSION CONTROL MEASURES NECESSARY TO PREVENT EROSION AND SEDIMENTATION AS DETERMINED BY THE ENGINEER.
13. THE CONTRACTOR SHALL MAINTAIN POSITIVE DRAINAGE TO ALL EXISTING DRAINAGE STRUCTURES AT ALL TIMES DURING CONSTRUCTION. METHODS USED BY THE CONTRACTOR SHALL BE SUBJECT TO THE APPROVAL OF THE ENGINEER.
14. RAISED REFLECTIVE PAVEMENT MARKERS ARE TO BE USED AS SHOWN ON DISTRICT ONE DETAIL "TYPICAL APPLICATIONS - RAISED REFLECTIVE PAVEMENT MARKERS (SNOW-PLOW RESISTANT)" SHOWN IN PLAN.
15. THE DEPARTMENT HAS DETERMINED THAT IN STREAM WORK IS NOT REQUIRED FOR THE WORK SPECIFIED IN THIS CONTRACT. THE DEPARTMENT HAS NOT OBTAINED A USACE PERMIT. IF THE CONTRACTOR CHOOSES TO USE ACTIVITIES REQUIRING A USACE PERMIT, IT IS THE CONTRACTOR'S RESPONSIBILITY TO SECURE THE PROPER USACE PERMITS. THE COST OF ALL MATERIALS AND LABOR NECESSARY TO SECURE AND COMPLY WITH A USACE PERMIT FOR CONTRACTOR'S ACTIVITIES WILL NOT BE PAID FOR SEPARATELY, BUT SHALL BE CONSIDERED AS INCLUDED IN THE UNIT BID PRICES OF THE CONTRACT AND NO ADDITIONAL COMPENSATION WILL BE ALLOWED.
16. DUE TO THE PRESENCE OF A RED LIGHT RUNNING (RLR) CAMERA WITHIN THE PROJECT LIMITS, CONTRACTOR SHALL NOTIFY THE VILLAGE OF SCHILLER PARK AND THE REDSPEED ILLINOIS, LLC PRIOR TO THE START OF CONSTRUCTION.

VILLAGE OF SCHILLER PARK 9526 W. IRVING PARK ROAD SCHILLER PARK, IL 60176 PHONE: 847-671-8506	REDSPEED ILLINOIS, LLC. 400 EISENHOWER LANE LOMBARD, ILLINOIS 60148 PHONE: 630-317-5700
--	--

THE VILLAGE OF SCHILLER PARK OR THE REDSPEED ILLINOIS,LLC SHALL MAKE THE RLR CAMERA INOPERATIVE FOR THE TIME OF CONSTRUCTION. ANY RLR CAMERA EQUIPMENT THAT IS IN CONFLICT WITH THE PROPOSED CONSTRUCTION SHALL BE REMOVED BY ITS RESPECTIVE OWNERS PRIOR TO THE START OF CONSTRUCTION.

17. THESE PLANS HAVE BEEN PREPARED FROM NOTES RECEIVED FROM IDOT FIELD MAINTENANCE ENGINEERS.

HOT-MIX ASPHALT MIXTURE REQUIREMENTS		QMP
MIXTURE TYPE	AIR VOIDS @ Ndesign	
IL 19 PAVEMENT RESURFACING		
HOT-MIX ASPHALT SURFACE COURSE, IL-9.5, MIX "D", N70	4% @ 70 GYR.	QC/QA
GUARDRAIL STABILIZATION & SLOPE REPAIR		
HOT-MIX ASPHALT SURFACE COURSE, IL-9.5, MIX "D", N70, 6" (IN 3 LIFTS)	4% @ 70 GYR.	QC/QA
QMP DESIGNATIONS: QUALITY CONTROL/QUALITY ASSURANCE (QC/QA); QUALITY CONTROL FOR PERFORMANCE (QCP); PAY FOR PERFORMANCE (PFP)		

THE UNIT WEIGHT USED TO CALCULATE ALL HMA SURFACE MIXTURES QUANTITIES IS 112 LBS/SQ YD/IN.

THE "AC TYPE" FOR POLYMERIZED HMA MIXES SHALL BE "SBS/SBR PG 76-22" AND FOR NON-POLYMERIZED HMA THE "AC TYPE" SHALL BE "PG 64-22" UNLESS MODIFIED BY RECLAIMED MATERIALS SPECIFICATIONS.

THE LONGITUDINAL JOINT SEALANT SHALL BE PLACED UNDER THE HMA SURFACE MIX.

MODEL: Default
FILE NAME: P:\projects\230003377C_DESIGN\Chitika\Working\Sheet\DIST1\3-SH-COMMIT.dgn



USER NAME = asharghi	DESIGNED -	REVISED -
	DRAWN -	REVISED -
PLOT SCALE = 2.0000' / in.	CHECKED -	REVISED -
PLOT DATE = 8/11/2025	DATE -	REVISED -

STATE OF ILLINOIS
DEPARTMENT OF TRANSPORTATION

GENERAL NOTES, HIGHWAY STANDARDS AND COMMITMENTS

SCALE: NONE SHEET 1 OF 1 SHEETS STA. TO STA.

△ REVISED ENTIRE SHEET 8/27/2025				
F.A.P. RTE.	SECTION	COUNTY	TOTAL SHEETS	SHEET NO.
345	(1293-BR) BDR, BJR 25	COOK	51	2
CONTRACT NO. 62Y13				
ILLINOIS FED. AID PROJECT				

PAVEMENT MARKING SCHEDULE

LOCATION			PREFORMED PLASTIC PAVEMENT MARKING, TYPE D- INLAID- LINE 7" 78004635	MODIFIED URETHANE PAVEMENT MARKING TYPE II - LETTERS AND SYMBOLS 78009000	MODIFIED URETHANE PAVEMENT MARKING TYPE II - LINE 4" 78009004	MODIFIED URETHANE PAVEMENT MARKING TYPE II - LINE 6" 78009006	MODIFIED URETHANE PAVEMENT MARKING TYPE II - LINE 12" 78009012	MODIFIED URETHANE PAVEMENT MARKING TYPE II - LINE 24" 78009024
STATION TO STATION	ROADWAY	OFFSET	(FOOT)	(SQ FT)	(FOOT)	(FOOT)	(FOOT)	(FOOT)
99+00 TO 102+80	IL 19	22' RT			95			
99+02 TO 101+02	IL 19	11' RT				50		
99+02 TO 100+39	IL 19	33' RT				35		
101+02 TO 102+79	IL 19	11' RT				177		
100+39 TO 102+87	IL 19	33' RT				248		
101+12 TO 101+18	IL 19	5' RT		20.8				
101+38 TO 101+43	IL 19	5' RT		15.6				
102+76 TO 102+93	IL 19	0' RT						52
103+82 TO 103+88	IL 19	0' RT						36
103+83 TO 105+50	IL 19	23' LT			42			
103+85 TO 107+70	IL 19	0' RT					42	
103+86 TO 105+50	IL 19	12' LT				164		
103+88 TO 109+35	IL 19	0' RT			1114			
103+88 TO 113+13	IL 19	6' RT			1850			
103+88 TO 105+50	IL 19	17' RT			41			
105+10 TO 105+15	IL 19	7' LT		15.6				
105+35 TO 105+41	IL 19	7' LT		20.8				
105+50 TO 107+50	IL 19	11' LT				50		
105+50 TO 111+20	IL 19	23' LT	143					
105+50 TO 111+33	IL 19	17' RT	146					
108+65 TO 111+14	IL 19	22' LT			249			
108+98 TO 111+39	IL 19	22' RT			241			
111+20 TO 126+00	IL 19	23' LT			370			
111+33 TO 126+00	IL 19	17' RT			367			
111+58 TO 111+70	IL 19	0' RT					315	
111+58 TO 111+82	IL 19	22' LT				50		
111+70 TO 111+95	IL 19	22' LT				50		
114+22 TO 118+15	IL 19	0' RT			786			
118+82 TO 126+00	IL 19	0' RT			1436			
IL 19 TOTAL			289	73	6590	824	357	88

MODEL Default
FILE NAME: P:\projects\2000\2377C_DESIGN\Chili\Working\Sheet\112\11-Sht-Sched.dgn



USER NAME = asharght	DESIGNED -	REVISED -
	DRAWN -	REVISED -
PLOT SCALE = 100,000' / 1" =	CHECKED -	REVISED -
PLOT DATE = 8/5/2025	DATE -	REVISED -

STATE OF ILLINOIS
DEPARTMENT OF TRANSPORTATION

SCHEDULE OF QUANTITIES			
SCALE:	SHEET 1 OF 1 SHEETS	STA.	TO STA.

F.A.P. RTE.	SECTION	COUNTY	TOTAL SHEETS	SHEET NO.
345	(1293-BR) BDR, BJR 25	COOK	51	11
CONTRACT NO. 62Y13				
Long Section Number			ILLINOIS	FED. AID PROJECT

1 REVISED ENTIRE SHEET 8/27/2025

1. CHANGEABLE MESSAGE SIGNS SHALL BE INSTALLED TWO WEEKS PRIOR TO ALL TRAFFIC STAGE CHANGE OR FULL STOP/ROAD CLOSURE EVENTS ON EACH APPROACH OF THE EFFECTED ROADWAY TO WARN MOTORISTS OF THE UPCOMING EVENT. THE SIGNS SHALL BE REMOVED TWO WEEKS THEREAFTER UNLESS THE SIGNS ARE NEEDED AGAIN FOR A SUBSEQUENT FUTURE EVENT THAT WILL OCCUR WITHIN TWO WEEKS ON THE SAME APPROACH OF THE EFFECTED ROADWAY. THE SIGN LOCATIONS SHALL BE PLACED AS DIRECTED BY THE ENGINEER.
2. THE CONTRACTOR'S ATTENTION IS DIRECTED TO THE FACT THAT WHEN WORK BEGINS, THE CONTRACTOR SHALL ASSUME THE MAINTENANCE OF ANY PAVEMENT, DRAINAGE FACILITIES, TRAFFIC CONTROL SIGNS, AND TRAFFIC WITHIN THE LIMITS OF THE CONTRACT.
3. TRAFFIC CONTROL DEPICTED IN THESE PLANS AND THE APPLICABLE IDOT DETAILS AND STANDARDS ARE THE MINIMUM REQUIRED. OTHER WORK OR SIGNING MAY BE REQUIRED BY THE ENGINEER. TRAFFIC CONTROL AND PROTECTION SHALL BE PERFORMED IN ACCORDANCE WITH THE STANDARD SPECIFICATIONS, APPLICABLE GUIDELINES IN THE ILLINOIS MANUAL ON THE UNIFORM TRAFFIC CONTROL DEVICES FOR STREETS AND HIGHWAYS, AND APPLICABLE HIGHWAY STANDARDS FOR TRAFFIC CONTROL.
4. THE CONTRACTOR WILL BE REQUIRED TO RELOCATE OR REMOVE AND REPLACE SIGNS WHICH INTERFERE WITH CONSTRUCTION OPERATIONS, AND TO TEMPORARILY RESET ALL SUCH SIGNS DURING CONSTRUCTION OPERATIONS. THIS WORK WILL BE INCLUDED IN THE COST OF THE TRAFFIC CONTROL AND PROTECTION, (SPECIAL). EXISTING SIGNS THAT ARE DAMAGED DURING THE REMOVAL AND REPLACEMENT SHALL BE REPLACED AT THE CONTRACTOR'S EXPENSE.

STAGE 1

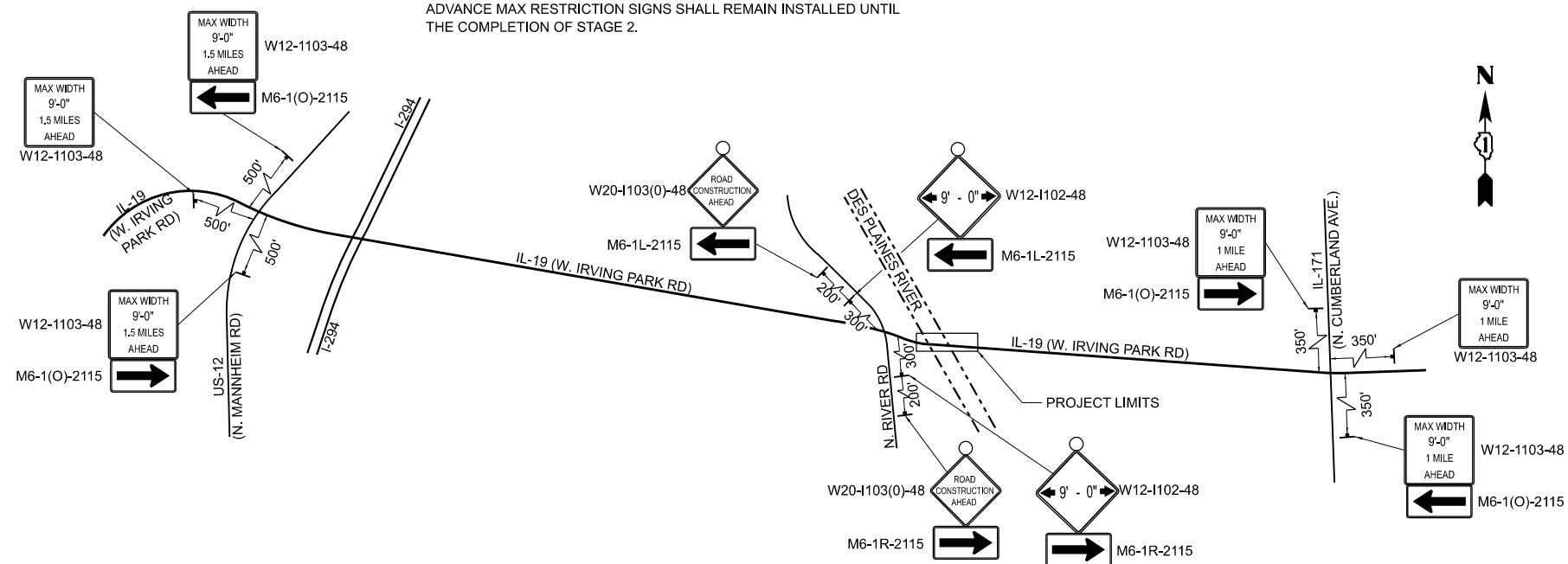
FOLLOWING MOT STAGE 1, CLOSE ONE LANE IN EACH DIRECTION OF TRAVEL ON IL 19 AND SHIFT TRAFFIC ON TO THE SOUTH SIDE OF THE BRIDGE AS SHOWN ON THE PLANS. REPAIR AND OVERLAY THE NORTH HALF OF THE BRIDGE AND REPLACE SIDEWALK AND SLOPES ALONG IL-19 WB FROM BRIDGE TO INTERSECTION.

STAGE 2

FOLLOWING MOT STAGE 2, CLOSE ONE LANE IN EACH DIRECTION OF TRAVEL ON IL 19 AND SHIFT TRAFFIC ON TO THE NORTH SIDE OF THE BRIDGE AS SHOWN ON THE PLANS. REPAIR AND OVERLAY THE SOUTH HALF OF THE BRIDGE.

NOTE:

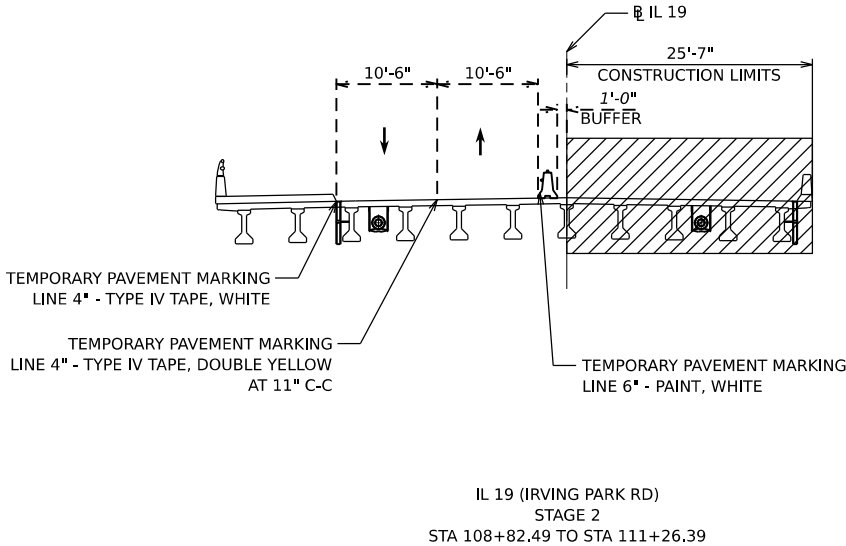
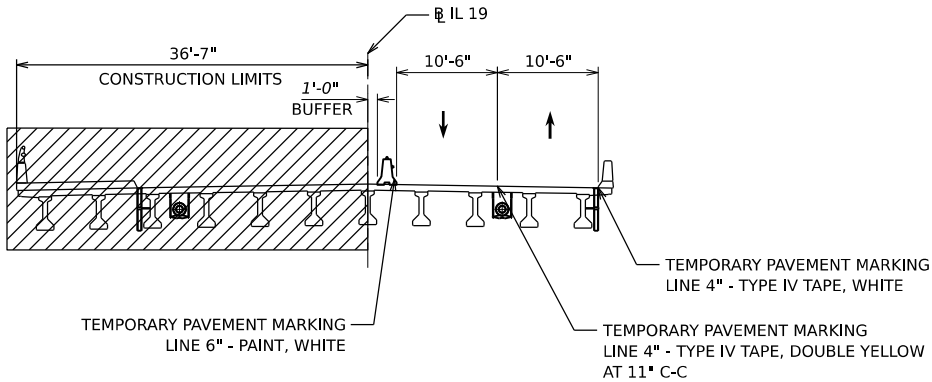
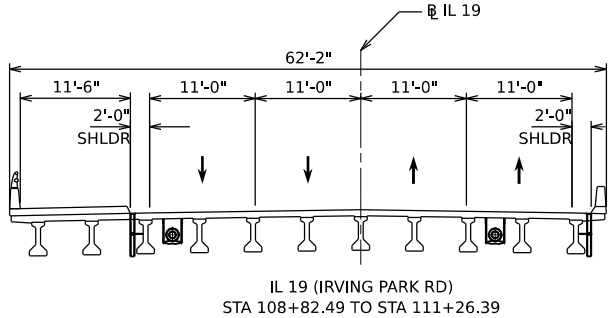
ADVANCE MAX RESTRICTION SIGNS SHALL REMAIN INSTALLED UNTIL THE COMPLETION OF STAGE 2.



LEGEND

TEMPORARY CONCRETE BARRIER
W/ DOUBLE SIDED TYPE C CRYSTAL
REFLECTORS, PER STND. 704001 AND
782006

WORK ZONE



NOTES

1. THE BOTTOM BASE OF THE TCB SHALL BE PAINTED
ALONG THE WORK ZONE USING "TEMPORARY PAVEMENT
MARKING - LINE 6" PAINT"

1 REVISED ENTIRE SHEET 8/27/2025

MODEL: D:\epstein\2000\2377\2377_C_DESIGN\1a_Civil\Working\Sheet\MOTD 162Y15-Shd-MOT Typical Sections.dgn
FILE NAME: P:\epstein\2000\2377\2377_C_DESIGN\1a_Civil\Working\Sheet\MOTD 162Y15-Shd-MOT Typical Sections.dgn



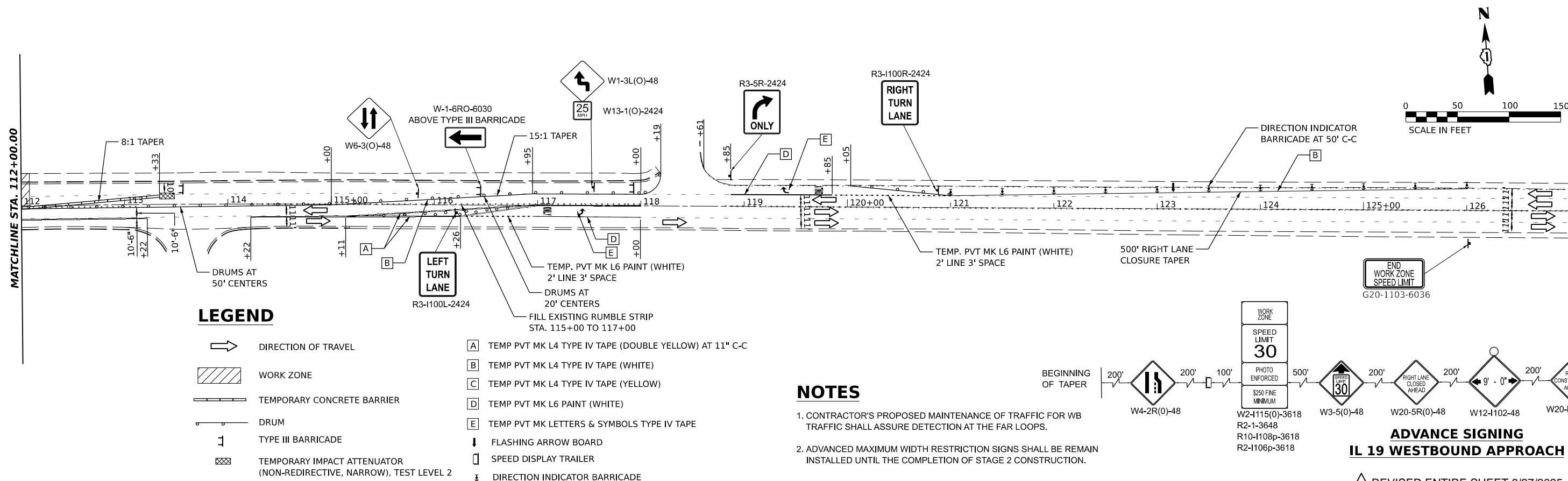
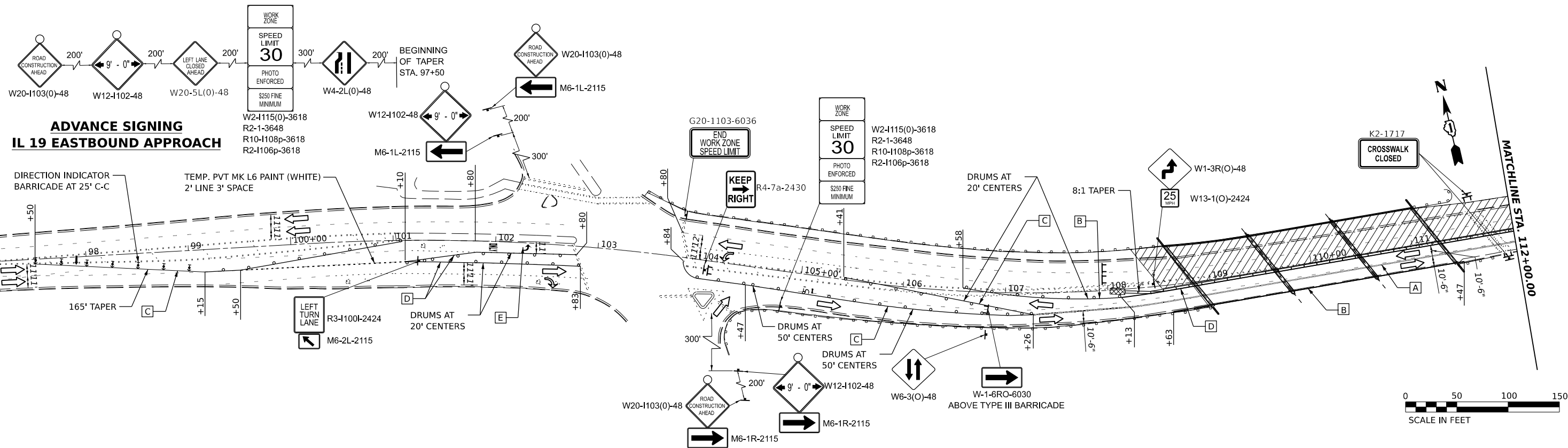
USER NAME = asharght	DESIGNED -	REVISED -
	DRAWN -	REVISED -
PLOT SCALE = 20,0000' / 1"	CHECKED -	REVISED -
PLOT DATE = 8/5/2025	DATE -	REVISED -

STATE OF ILLINOIS
DEPARTMENT OF TRANSPORTATION

MAINTENANCE OF TRAFFIC TYPICAL SECTIONS

SCALE: SHEET 1 OF 1 SHEETS STA. 108+82.49 TO STA. 111+26.39

F.A.P. RTE.	SECTION	COUNTY	TOTAL SHEETS	SHEET NO.
345	(1293-BR) BDR, BJR 25	COOK	51	15
CONTRACT NO. 62Y13				
ILLINOIS FED. AID PROJECT				

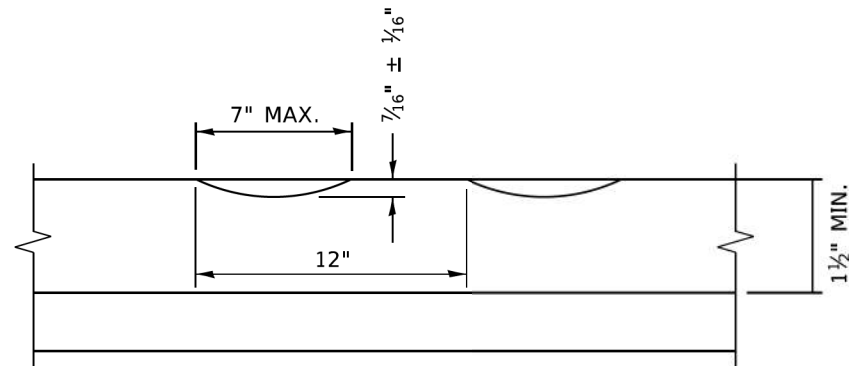


STATE OF ILLINOIS
DEPARTMENT OF TRANSPORTATION

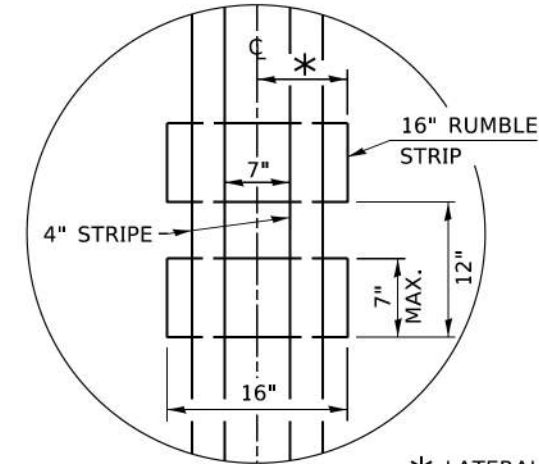
MAINTENANCE OF TRAFFIC STAGE 1

SCALE: 1" = 50' SHEET 1 OF 1 SHEETS STA. 97+00 TO STA. 127+00

F.A.P. RTE.	SECTION	COUNTY	TOTAL SHEETS	SHEET NO.
345	1293-BR	COOK	51	16
CONTRACT NO. 62Y13				
ILLINOIS FED. AID PROJECT				



SECTION A-A



* LATERAL DEVIATION SHALL NOT EXCEED ONE INCH IN 100 FEET.

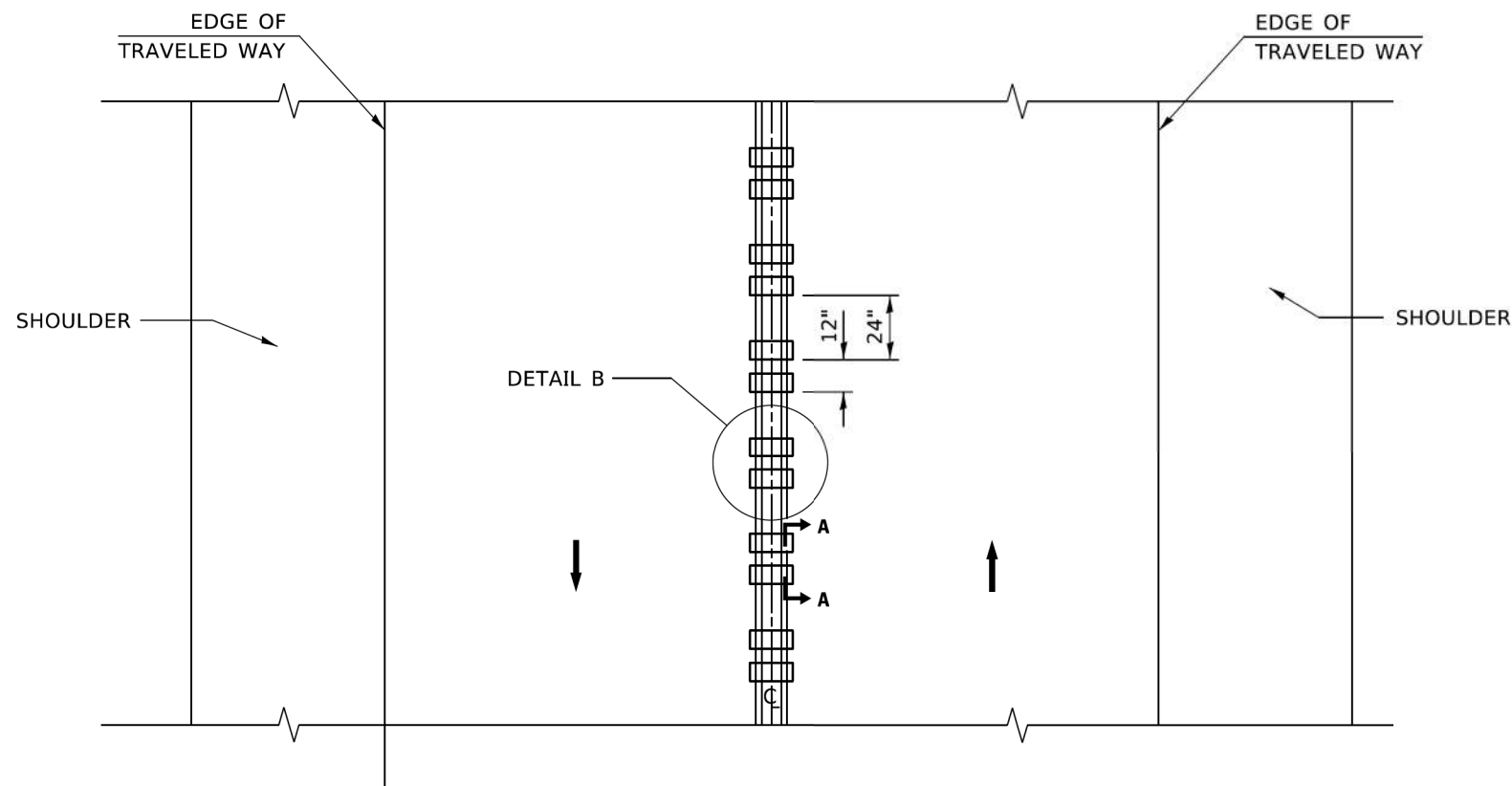
DETAIL B

GENERAL NOTES

1. CENTERLINE RUMBLE STRIPS SHALL BE CONSTRUCTED ACCORDING TO SECTION 642 ALONG THE CENTERLINE OF PAVEMENT.
2. SEE STANDARD 780001 FOR OTHER STRIPING LAYOUTS.
3. RUMBLE STRIPS SHALL NOT BE PLACED ON BRIDGES.
4. ALL RUMBLE STRIPS SHALL BE MILLED.
5. CENTERLINE RUMBLE STRIPS SHALL BE CONTINUOUS THROUGH CONNECTIONS OF SIDEROADS WITH NO LEFT TURN LANES.
6. DISCONTINUE CENTERLINE RUMBLE STRIPS THROUGH THE LIMITS OF ALL LEFT TURN LANES, INCLUDING ANY LANE TAPER SECTIONS.
7. AFTER RUMBLE STRIPS ARE INSTALLED, THE PAVEMENT SURFACE SHALL BE SWEEPED CLEAN PRIOR TO THE PLACEMENT OF THE NEW PAVEMENT MARKINGS.
8. WHERE USED, ADJUST SPACING OF RAISED REFLECTIVE PAVEMENT MARKERS TO FALL IN WIDER GAP BETWEEN RUMBLE STRIPS.

BASIS OF PAYMENT

1. THIS WORK WILL BE PAID FOR AT THE CONTRACT UNIT PRICE PER FOOT FOR CENTERLINE-RUMBLE STRIP OF THE WIDTH SPECIFIED.
2. HOT-SPRAY THERMOPLASTIC PAVEMENT MARKING WILL BE USED OVER THE RUMBLE STRIPS, AND WILL BE PAID FOR SEPARATELY.



TWO-WAY ROAD

STATE OF ILLINOIS
DEPARTMENT OF TRANSPORTATION

RUMBLE STRIPS FOR CENTERLINE, NON-FREEWAY

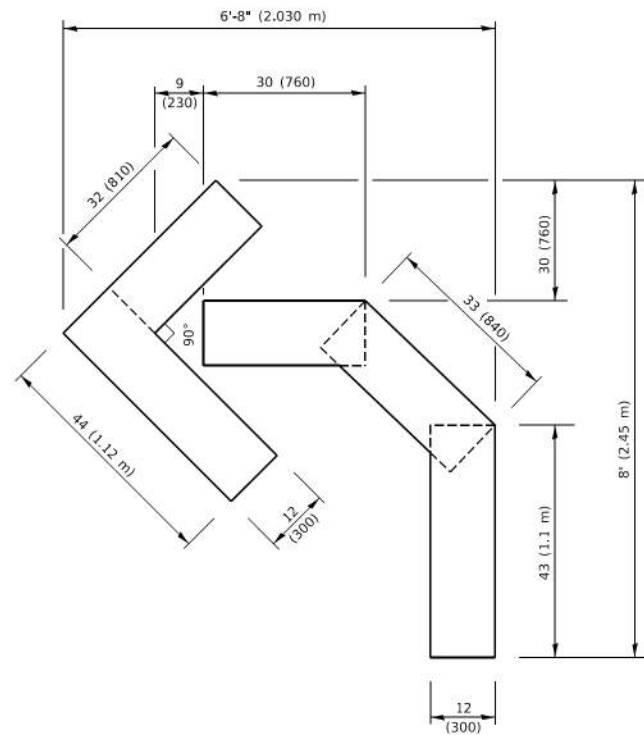
SCALE: NONE SHEET 1 OF 1 SHEETS STA. TO STA.

F.A.P. RTE.	SECTION	COUNTY	TOTAL SHEETS	SHEET NO.
345	(1293-BR) BDR, BJR 25	COOK	51	46
CONTRACT NO. 62Y13				
Long Section Number				

REVISD ENTIRE SHEET 8/27/2025

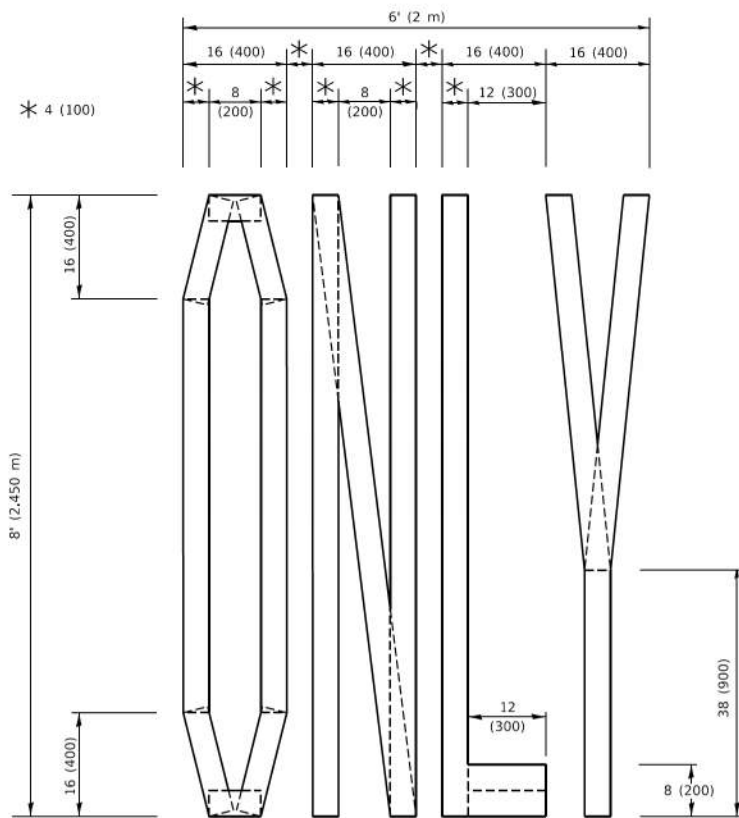
BD-55

USER NAME = asharghi	DESIGNED -	REVISED -
PLOT SCALE = 2,000' / in.	DRAWN -	REVISED -
PLOT DATE = 8/5/2025	CHECKED -	REVISED -
	DATE -	REVISED -



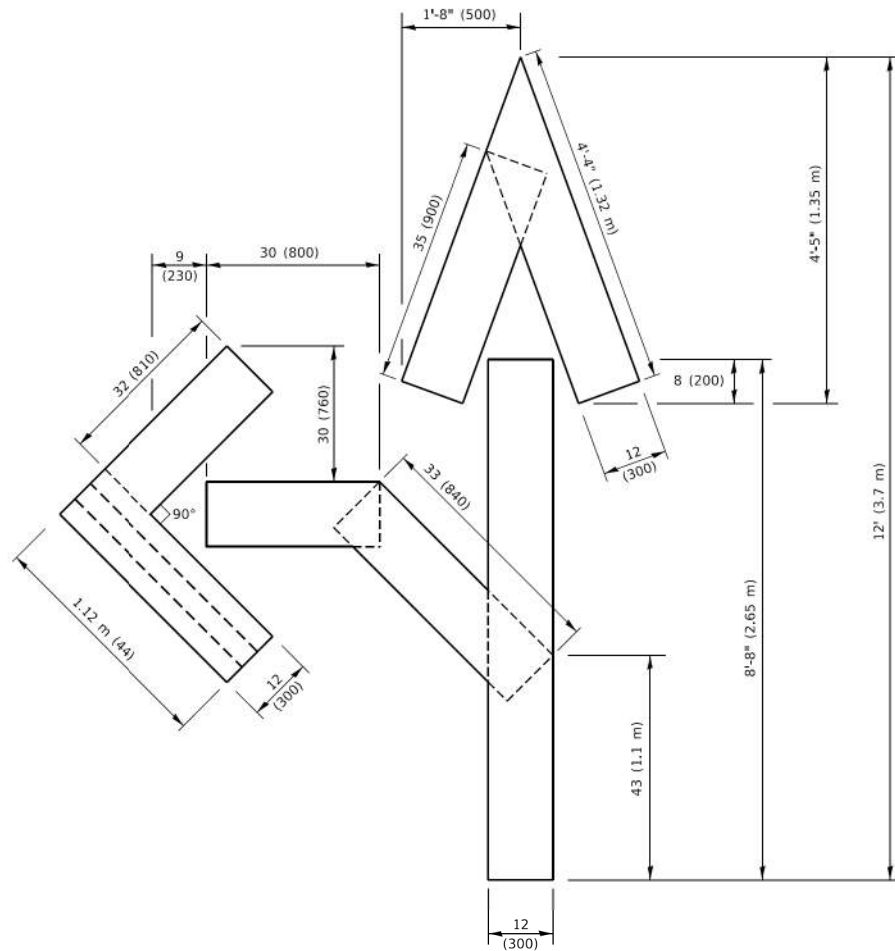
QUANTITY

4 (100) LINE = 45.5 ft. (13.9 m)
15.2 sq. ft. (1.41 sq. m)



QUANTITY

4 (100) LINE = 64.1 ft. (19.5 m)
21.4 sq. ft. (1.99 sq. m)

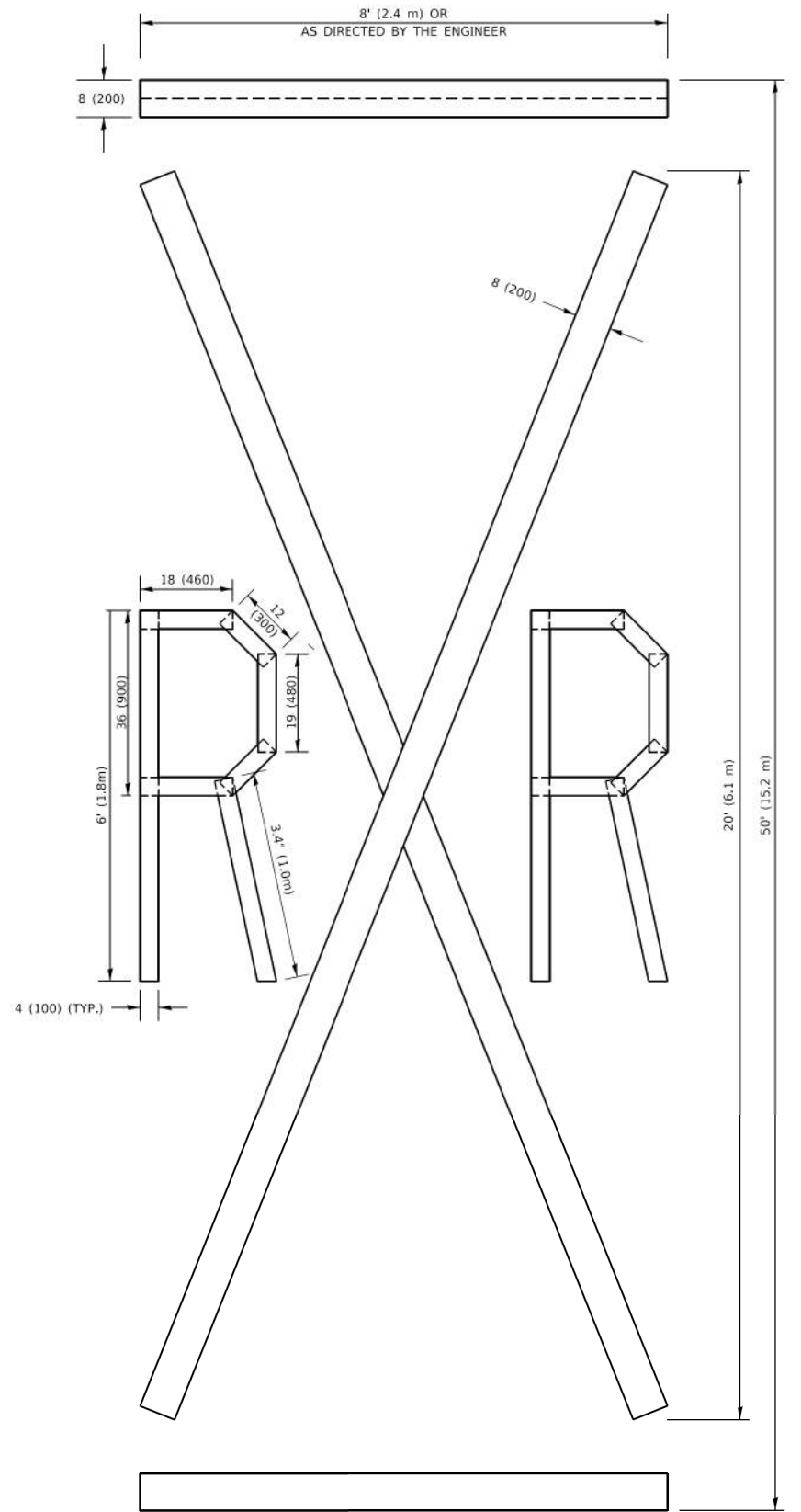


QUANTITY

4 (100) LINE = 82.5 ft. (25.1 m)
27.5 sq. ft. (2.53 sq. m)

NOTE:

ALL QUANTITIES OF PLACEMENT ARE REPRESENTED IN LINEAR FEET OF 4" LINES TO MATCH THE 4" TEMPORARY TAPE PAY ITEM AND REPRESENTS THE TOTAL QUANTITY OF 4" TAPE REQUIRED.



QUANTITY

4 (100) LINE = 225.9 ft. (68.9 m)
75.3 sq. ft. (6.99 sq. m)

All dimensions are in inches (millimeters) unless otherwise shown.

TC-16

REVISED ENTIRE SHEET 8/27/2025

STATE OF ILLINOIS
DEPARTMENT OF TRANSPORTATION

DISTRICT ONE SHORT TERM PAVEMENT MARKING
LETTERS AND SYMBOLS

SCALE: NONE SHEET 1 OF 1 SHEETS STA. TO STA.

F.A.P. RTE.	SECTION	COUNTY	TOTAL SHEETS	SHEET NO.
345	(1293-BR) BDR, BJR 25	COOK	51	51
CONTRACT NO. 62Y13				
Long Section Number				

MODEL: D:\epstein\Projects\2000\2377\G_DESIGN\Gna_Civil\Working\Sheet\13-Sign Template.dgn
FILE NAME: 2377-01-Sign Template.dgn



USER NAME	= asharghi
PLOT SCALE	= 2,000' / in.
PLOT DATE	= 8/5/2025

DESIGNED	-
DRAWN	-
CHECKED	-
DATE	-

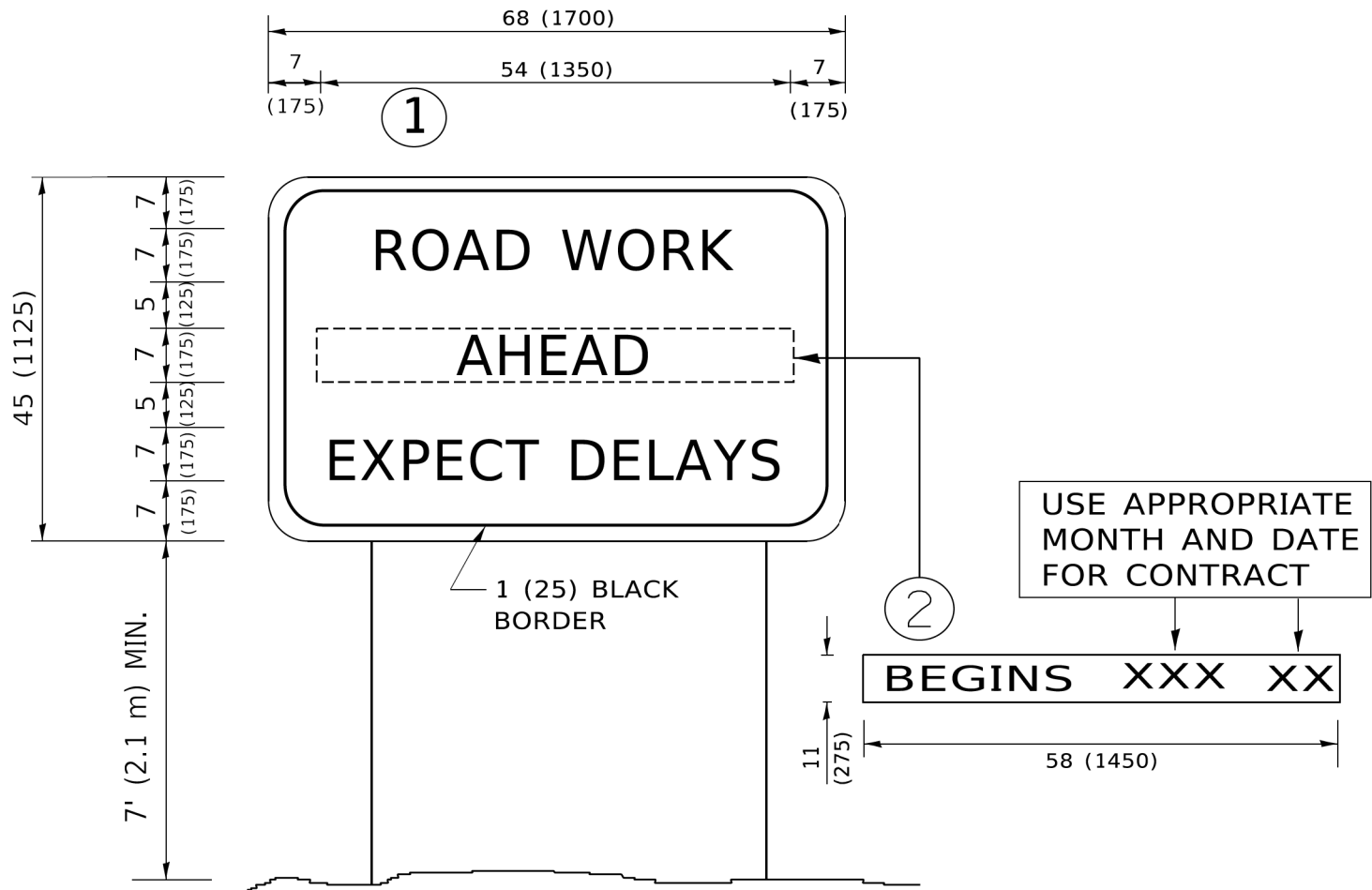
REVISED	-
REVISED	-
REVISED	-
REVISED	-

STATE OF ILLINOIS
DEPARTMENT OF TRANSPORTATION

DISTRICT ONE ARTERIAL ROAD INFORMATION SIGN			
SCALE: NONE	SHEET 1	OF 1 SHEETS	STA. TO STA.

F.A.P. RTE.	SECTION	COUNTY	TOTAL SHEETS	SHEET NO.
345	(1293-BR) BDR, BJR 25	COOK	51	51A
CONTRACT NO. 62Y13				
ILLINOIS FED. AID PROJECT				

Long Section Number



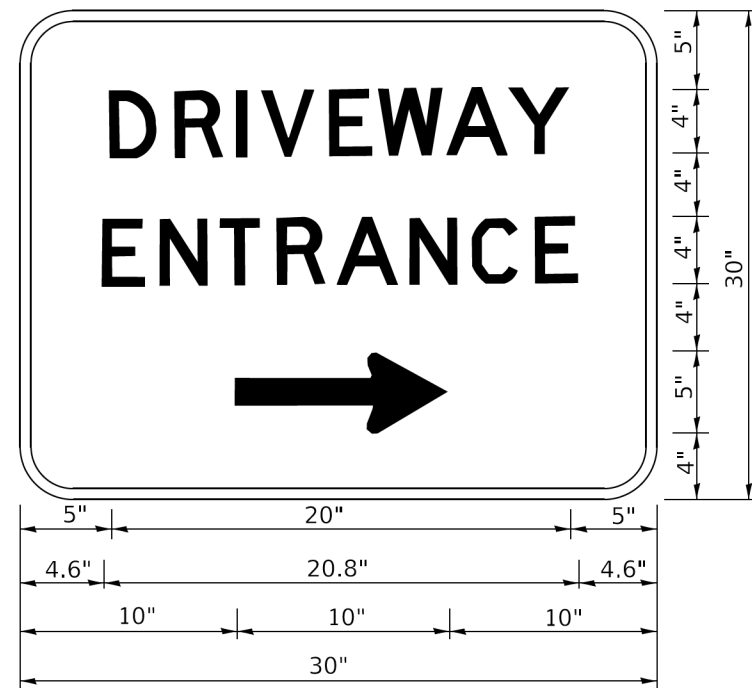
NOTES:

1. USE BLACK LETTERING ON ORANGE BACKGROUND.
2. ERECT SIGNS IN ADVANCE OF THE LOCATION FOR THE "ROAD CONSTRUCTION AHEAD" SIGN AT LOCATIONS AS DIRECTED BY THE ENGINEER.
3. ERECT SIGN①WITH INSTALLED PANEL②ONE WEEK PRIOR TO THE START OF CONSTRUCTION.
4. REMOVE PANEL②SOON AFTER THE START OF CONSTRUCTION.
5. SEE SPECIAL PROVISION FOR "TEMPORARY INFORMATION SIGNING" FOR ADDITIONAL INFORMATION.
6. ONE SIGN ASSEMBLY EQUALS 25.70 SQ. FT. (2.3 SQ. M.)
7. SHALL BE PAID FOR AS TEMPORARY INFORMATION SIGNING.

△ REVISED ENTIRE SHEET 8/27/2025

ALL DIMENSIONS ARE IN INCHES (MILLIMETERS)
UNLESS OTHERWISE SHOWN.

TC-22



3.0" RADIUS, 0.5" BORDER, WHITE ON GREEN; REFLECTORIZED
"DRIVEWAY" D; "ENTRANCE" D; STANDARD ARROW CUSTOM 12.0" x 5.0"

NOTES:

1. HALF OF THE SIGNS WILL REQUIRE A LEFT HAND FACING ARROW.
2. TWO SIGNS SHALL BE USED AT EACH COMMERCIAL ENTRANCE
PLACED BACK-TO-BACK: ONE WITH A RIGHT HAND ARROW (SHOWN)
SHALL BE PLACED ON THE NEAR RIGHT SIDE THE DRIVEWAY
AND ONE WITH A LEFT HAND ARROW SHALL BE PLACED ON THE
FAR LEFT SIDE OF THE DRIVEWAY.
3. SIGNS TO BE PAID FOR AS ITEM "TEMPORARY INFORMATION SIGNING".

TC-26

MODEL: D:\epstein\2000\2377C_DESIGN\ChiliWork\Signs\13-SH-DRIVEWAY.dgn
FILE NAME: P:\epstein\2000\2377C_DESIGN\ChiliWork\Signs\13-SH-DRIVEWAY.dgn



USER NAME = asharghi	DESIGNED -	REVISED -
	DRAWN -	REVISED -
PLOT SCALE = 2,000' / in.	CHECKED -	REVISED -
PLOT DATE = 8/5/2025	DATE -	REVISED -

STATE OF ILLINOIS
DEPARTMENT OF TRANSPORTATION

DISTRICT ONE DRIVEWAY ENTRANCE SIGNING

SCALE: NONE SHEET 1 OF 1 SHEETS STA. TO STA.

F.A.P. RTE.	SECTION	COUNTY	TOTAL SHEETS	SHEET NO.
345	(1293-BR) BDR, BJR 25	COOK	51	51B
CONTRACT NO. 62Y13				

ILLINOIS FED. AID PROJECT
Long Section Number