

1	7290	IL 31 AT IL 120	MCHENRY
2	14965	BELVIDERE ST AT GENESEE RD	LAKE
3	6708	IL 21 AT CASEY	LAKE
4	7239	US 14 AT DOTY RD	MCHENRY
5	21490	IL 21 AT LAKE ST	LAKE
6	21410	IL 21 AT CORPORATE WOODS PKWY	LAKE
7	11282	LAKE COOK RD AT APPLEBEE ST	COOK
8	1160	US 12 AT OLD HICKS RD	COOK
9	3137	IL 68 AT ANTHONY TRAIL	COOK
10	4325	IL 25 AT ROBIN RD	KANE
11	405	US 12 AT KENNICOTT DR	COOK
12	885	IL 72 AT RIVER ST	KANE
13	9645	US 12 AT BUSINESS CENTER DR	COOK
14	14744	IL 62 AT OLD WILKE RD (REMOVED FROM CONTRACT)	COOK
15	2865	IL 58 AT WOLF RD	COOK
16	5157	IL 58 AT WOODS DR	COOK
17	21130	BARRINGTON RD AT OLD CHURCH RD	COOK
18	9690	US 14 AT CENTRAL RD / PROSPECT AVE	COOK
19	1577	US 41 AT SEARLE PKWY (REMOVED FROM CONTRACT)	COOK
20	9240	TOUHY AT BUSSE	COOK
21	12094	IL 31 AT MCLEAN BLVD	KANE
22	20323	IL 31 AT SILVER GLEN RD	KANE
23	4605	US 20 AT NORTH CIRCLE AVE	DUPAGE
24	10955	IL 38 AT ANDERSON BLVD	KANE
25	10952	IL 38 AT 7TH ST	KANE
26	15255	IL 38 AT S. CARLTON AVE	DUPAGE
27	785	IL 25 (WASHINGTON ST.) AT WILSON STREET	KANE
28	750	IL 25 (RIVER ST.) AT WILSON STREET (REMOVED FROM CONTRACT)	KANE
29	982	HIGHLAND AVE AT EASTGATE RD	DUPAGE
30	3765	31ST ST AT GOLF VIEW RD	COOK
31	3760	DES PLAINES AVE AT 31ST ST	COOK
32	13920	US 12-20-45 AT HOMESTEAD RD	COOK
33	2450	IL 50 AT 39TH ST (REMOVED FROM CONTRACT)	COOK
34	11655	IL 53 AT MAIN ST	DUPAGE
35	3850	55TH ST AT JOLIET RD	COOK
36	159	WOLF RD AT 153RD ST	COOK
37	22060	US 45 AT 171ST	COOK
38	12404	IL 50 AT N GATEWAY DR	COOK
39	14715	PALATINE RD AT SMITH ST	COOK
40	5600	MEACHAM RD AT OLD PLUM GROVE RD	COOK

1 REVISD SHEET 9/9/2025

MODEL: Definitive
FILE NAME: S:\Projects\2216-DDOT\1 Ver Final\TES & Maint - TSIP\Project Work\CADD\CADD_Sheets\01_General Sheet\2216\964-locations_Map.dgn

**ATLAS**

ATLAS TECHNICAL CONSULTANTS, LLC
100 S. WACKER DRIVE, SUITE 400
CHICAGO, IL 60606

USER NAME = dbriones	DESIGNED - DLB	REVISED - 9/4/25
	DRAWN - JK	REVISED -
PLOT SCALE = 200,000' / in.	CHECKED - DB	REVISED -
PLOT DATE = 9/4/2025	DATE - 08/28/2025	REVISED -

STATE OF ILLINOIS
DEPARTMENT OF TRANSPORTATION

LOCATIONS MAP			
SCALE: N.T.S.	SHEET 1 OF 1 SHEETS	STA.	TO STA.

F.A.U. RTE.	SECTION	COUNTY	TOTAL SHEETS	SHEET NO.
XXX	2024-964-TS	VARIOUS	89	2
MAP-1		CONTRACT NO. 62W89		
ILLINOIS		FED. AID PROJECT		

SUMMARY OF QUANTITIES

CODE NO.	ITEM	UNIT	TOTAL QUANTITY	CONSTRUCTION CODE
				HSIP FUNDS
				90% FED / 10% STATE
				TRAFFIC SIGNALS
				0021
				URBAN
				496
				70
				5
				1
28000400	PERIMETER EROSION BARRIER	FOOT	496	496
66900200	NON-SPECIAL WASTE DISPOSAL	CU YD	70	70
66900530	SOIL DISPOSAL ANALYSIS	EACH	5	5
66901001	REGULATED SUBSTANCES PRE-CONSTRUCTION PLAN	L SUM	1	1
66901003	REGULATED SUBSTANCES FINAL CONSTRUCTION REPORT	L SUM	1	1
66901006	REGULATED SUBSTANCES MONITORING	CAL DA	56	56
67000400	ENGINEER'S FIELD OFFICE, TYPE A	CAL MO	9	9
67100100	MOBILIZATION	L SUM	1	1
70102620	TRAFFIC CONTROL AND PROTECTION, STANDARD 701501	L SUM	1	1
70102622	TRAFFIC CONTROL AND PROTECTION, STANDARD 701502	L SUM	1	1
70102630	TRAFFIC CONTROL AND PROTECTION, STANDARD 701601	L SUM	1	1
70102625	TRAFFIC CONTROL AND PROTECTION, STANDARD 701606	L SUM	1	1
70102635	TRAFFIC CONTROL AND PROTECTION, STANDARD 701701	L SUM	1	1
70102640	TRAFFIC CONTROL AND PROTECTION, STANDARD 701801	L SUM	1	1
72000100	SIGN PANEL - TYPE 1	SQ FT	5	5
81028200	UNDERGROUND CONDUIT, GALVANIZED STEEL, 2" DIA.	FOOT	1043	1043
81028220	UNDERGROUND CONDUIT, GALVANIZED STEEL, 3" DIA.	FOOT	48	48
85000200	MAINTENANCE OF EXISTING TRAFFIC SIGNAL INSTALLATION	EACH	35	35
87301215	ELECTRIC CABLE IN CONDUIT, SIGNAL NO. 14 2C	FOOT	8140	8140
87301225	ELECTRIC CABLE IN CONDUIT, SIGNAL NO. 14 3C	FOOT	839	839
87301245	ELECTRIC CABLE IN CONDUIT, SIGNAL NO. 14 5C	FOOT	195	195
87301255	ELECTRIC CABLE IN CONDUIT, SIGNAL NO. 14 7C	FOOT	129	129
87501200	TRAFFIC SIGNAL POST, 16 FT.	EACH	2	2
87301305	ELECTRIC CABLE IN CONDUIT, LEAD-IN, NO. 14 1 PAIR	FOOT	13131	13131
87301805	ELECTRIC CABLE IN CONDUIT, SERVICE, NO. 6 2 C	FOOT	549	549
87301900	ELECTRIC CABLE IN CONDUIT, EQUIPMENT GROUNDING CONDUCTOR, NO. 6 1C	FOOT	2170	2170
87800100	CONCRETE FOUNDATION, TYPE A	FOOT	60	60
87900200	DRILL EXISTING HANDHOLE	EACH	52	52
88030020	SIGNAL HEAD, LED, 1-FACE, 3-SECTION, MAST-ARM MOUNTED	EACH	4	4
88030050	SIGNAL HEAD, LED, 1-FACE, 3-SECTION, BRACKET MOUNTED	EACH	4	4
88030100	SIGNAL HEAD, LED, 1-FACE, 5-SECTION, BRACKET MOUNTED	EACH	2	2
88030110	SIGNAL HEAD, LED, 1-FACE, 5-SECTION, MAST-ARM MOUNTED	EACH	2	2
88102717	PEDESTRIAN SIGNAL HEAD, LED, 1-FACE, BRACKET MOUNTED WITH COUNTDOWN TIMER	EACH	18	18
88200410	TRAFFIC SIGNAL BACKPLATE, LOUVERED, FORMED PLASTIC	EACH	6	6
88500100	INDUCTIVE LOOP DETECTOR	EACH	37	37
88600100	DETECTOR LOOP, TYPE I	FOOT	194	194
89501250	RELOCATE EXISTING TRAFFIC SIGNAL EQUIPMENT	EACH	6	6
89501410	RELOCATE EXISTING EMERGENCY VEHICLE PRIORITY SYSTEM, PHASING UNIT	EACH	8	8
89502200	MODIFY EXISTING CONTROLLER	EACH	6	6
89502300	REMOVE ELECTRIC CABLE FROM CONDUIT	FOOT	4761	4761
89502375	REMOVE EXISTING TRAFFIC SIGNAL EQUIPMENT	EACH	35	35
89502376	REBUILD EXISTING HANDHOLE	EACH	2	2
89502385	REMOVE EXISTING CONCRETE FOUNDATION	EACH	4	4
X1400144	UNINTERRUPTABLE POWER SUPPLY AND CABINET, SPECIAL	EACH	6	6
X1400150	SERVICE INSTALLATION, GROUND MOUNTED, METERED	EACH	15	15
X1400367	PEDESTRIAN SIGNAL POST, 10 FT.	EACH	5	5
X1400378	PEDESTRIAN SIGNAL POST, 5 FT.	EACH	45	45
X1400486	UNINTERRUPTABLE POWER SUPPLY-UPS	EACH	2	2
X2010516	SELECTIVE CLEARING	UNIT	3	3
X7200061	TEMPORARY INFORMATION SIGNING	SQ FT	2853	2853

CODE NO.	ITEM	UNIT	TOTAL QUANTITY	CONSTRUCTION CODE
				HSIP FUNDS
				90% FED / 10% STATE
				TRAFFIC SIGNALS
				0021
				URBAN
				1
				24
				11
				6
X8040108	ELECTRIC METER	EACH	1	1
X8510204	PAINT NEW PEDESTRIAN PUSH-BUTTON POST	EACH	24	24
X8570215	FULL-ACTUATED CONTROLLER IN EXISTING CABINET	EACH	11	11
X8570226	FULL-ACTUATED CONTROLLER AND TYPE IV CABINET (SPECIAL)	EACH	6	6
X8571215	RAILROAD, FULL-ACTUATED CONTROLLER AND TYPE IV CABINET (SPECIAL)	EACH	1	1
X8620200	UNINTERRUPTABLE POWER SUPPLY (SPECIAL)	EACH	2	2
X8620310	REMOVE AND REPLACE BATTERIES FOR UNINTERUPTABLE POWER SUPPLY, EXTENDED	EACH	17	17
X8760200	ACCESSIBLE PEDESTRIAN SIGNALS	EACH	136	136
X8780012	CONCRETE FOUNDATION, TYPE A 12-INCH DIAMETER	FOOT	200	200
X8809005	LED SIGNAL FACE, LENS COVER	EACH	13	13
Z0013798	CONSTRUCTION LAYOUT	L SUM	1	1
Z0033044	RE-OPTIMIZE TRAFFIC SIGNAL SYSTEM LEVEL 1	EACH	34	34
Z0033046	RE-OPTIMIZE TRAFFIC SIGNAL SYSTEM LEVEL 2	EACH	2	2
Z0048665	RAILROAD PROTECTIVE LIABILITY INSURANCE	L SUM	1	1
Z0076600	TRAINEES	HOUR	500	500
Z0076604	TRAINEES-TRAINING PROGRAM GRADUATE	HOUR	500	500

MODEL: Default
FILE NAME: S:\Projects\2216-DDOT\1 Ver Final\TES & Mgmt - TSIP\Project Work\CADD\CADD_Sheets\02_S00Q02W89-sh-SQ0_00.dgn



USER NAME = dbriones	DESIGNED - DLB	REVISED -
DRAWN - JK	REVISED -	
PLOT SCALE = 40,000' = 1 in.	CHECKED - DB	REVISED -
PLOT DATE = 8/4/2025	DATE - 07/31/2025	REVISED -

STATE OF ILLINOIS
DEPARTMENT OF TRANSPORTATION

SUMMARY OF QUANTITIES

SCALE: N.A. SHEET 1 OF 1 SHEETS STA. TO STA.

1 REVISED SHEET 9/9/2025

0042

F.A.U. RTE.	SECTION	COUNTY	TOTAL SHEETS	SHEET NO.
XXX	2024-964-TS	VARIOUS	89	4
S00-1		CONTRACT NO. 62W89		
		ILLINOIS	FED. AID PROJECT	

1. THIS PLAN IS FOR THE INSTALLATION OF APS PUSH BUTTONS AND LEADING PEDESTRIAN INTERVAL PROGRAMMING.
2. ALL PUSH BUTTONS SHALL BE APS.
3. APS SHALL BE PLACED PARALLEL TO THE CORRESPONDING CROSSWALKS.
4. CONTRACTOR SHALL CONFIRM THE FINAL LOCATION OF THE PEDESTRIAN EQUIPMENT WITH THE TRAFFIC SIGNAL ENGINEER BEFORE INSTALLATION.
5. ALL EXISTING TRAFFIC SIGNAL CABLE NO LONGER REQUIRED SHALL BE REMOVED.
6. SIDEWALK TO BE BROUGHT UP TO PROWAG STANDARDS ON A FUTURE CONTRACT.
7. THIS INTERSECTION SHALL BE CONSTRUCTED LAST TO ALLOW FOR THE COMPLETION OF ANOTHER CONTRACT AT THIS LOCATION.

THE FOLLOWING ITEMS SHALL BE REMOVED BY THE CONTRACTOR AND SHALL BE DISPOSED OF BY THEM OUTSIDE THE RIGHT-OF-WAY AT THEIR EXPENSE. THE SALVAGE VALUE OF THE REMOVED EQUIPMENT SHALL BE REFLECTED IN THE CONTRACT BID PRICE.

REMOVE EXISTING PUS
REPLACE WITH NEW A

EX 2 1/2"-UC-

REMOVE EXISTING PUSHBUTTON AND
REPLACE WITH NEW APS PUSHBUTTON

**IL RTE 31
(RICHMOND RD)**


REMOVE EXISTING PUSHBUTTON AND
REPLACE WITH NEW APS PUSHBUTTON

SOUTHEAST CORNER



TS 7290
EAGLE 40



USER NAME = dlorion	DESIGNED - DLB	REVISED -  9/4/25
	DRAWN - JK	REVISED -
PLOT SCALE = 40,000' / in.	CHECKED - DB	REVISED -
PLOT DATE = 9/4/2025	DATE = 08/28/2025	REVISED -

**STATE OF ILLINOIS
DEPARTMENT OF TRANSPORTATION**

TRAFFIC SIGNAL INSTALLATION PLAN
ILLINOIS ROUTE 31 AT ILLINOIS ROUTE 120

SCALE: 1"=20'	SHEET 1 OF 2 SHEETS	STA. _____ TO STA. _____
---------------	---------------------	--------------------------

F.A.U. RTE.	SECTION	COUNTY	TOTAL SHEETS	SHEET NO.
XXX	2024-964-TS	MCHENRY	89	12
		CONTRACT NO. 62W89		
ILLINOIS		FED. AID PROJECT		

MODEL: Default
FILE NAME: S:\Projects\2216 - IDOT D1 Var PHILITES & Mgmt. - TSP\Project Work\CADD\CADD Sheets\03 TS 7250 - I.L 31 at I.L 120 Elm E Jct\062W89-sr10-I.L 31 at I.L 120 Signal Plan.dgn

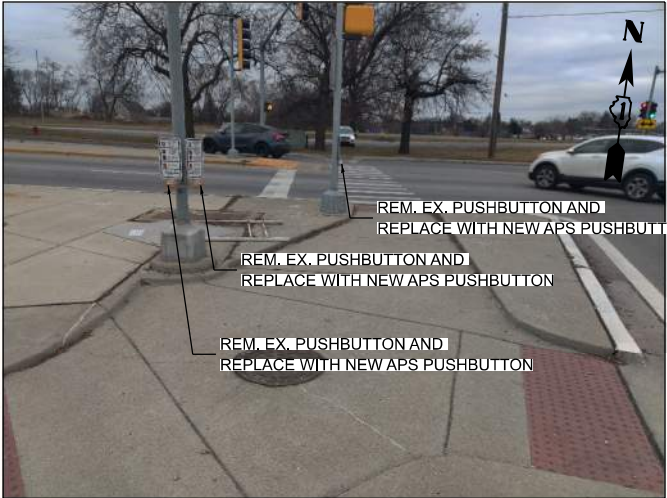
NOTES:

1. THIS PLAN IS FOR THE INSTALLATION OF APS PUSH BUTTONS AND LEADING PEDESTRIAN INTERVAL PROGRAMMING.
2. ALL PUSH BUTTONS SHALL BE APS.
3. APS SHALL BE PLACED PARALLEL TO THE CORRESPONDING CROSSWALKS.
4. CONTRACTOR SHALL CONFIRM THE FINAL LOCATION OF THE PEDESTRIAN EQUIPMENT WITH THE TRAFFIC SIGNAL ENGINEER BEFORE INSTALLATION.
5. ALL EXISTING TRAFFIC SIGNAL CABLE NO LONGER REQUIRED SHALL BE REMOVED.
6. SIDEWALK TO BE BROUGHT UP TO PROWAG STANDARDS ON A FUTURE CONTRACT.
7. THE GROUND MOUNTED, METERED SERVICE SHALL BE CONSTRUCTED ADJACENT TO THE EXISTING SERVICE CONDUIT PRIOR TO DISCONNECTING THE EXISTING SERVICE. INCLUDE A 5' STUB OF 2" CONDUIT FROM THE GM FOR FUTURE CONNECTION. THE COST OF THE 5' STUB, 2" UNDERGROUND CONDUIT AND SPLICE TO EXISTING SERVICE CONDUIT SHALL BE INCLUDED IN THE COST OF CONCRETE FOUNDATION, TYPE A. THE TRAFFIC SIGNALS SHALL REMAIN OPERATIONAL THE ENTIRE TIME THE SWITCH OVER BETWEEN EXISTING SERVICE AND PROPOSED SERVICE IS MADE.

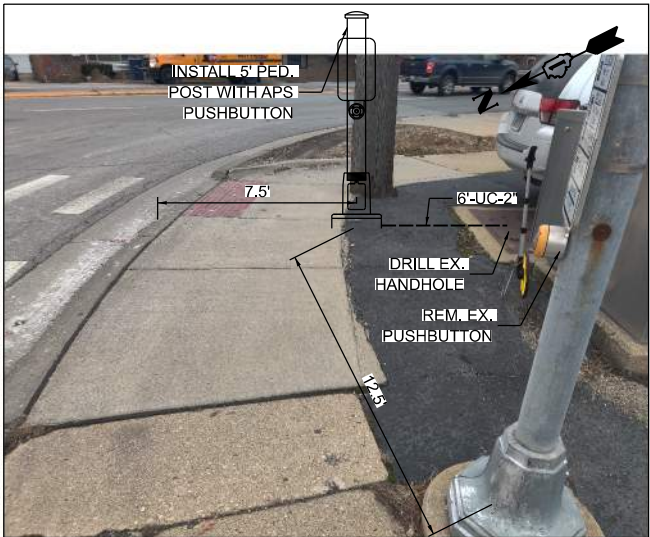
REMOVAL NOTES:

THE FOLLOWING ITEMS SHALL BE REMOVED BY THE CONTRACTOR AND SHALL BE DISPOSED OF BY THEM OUTSIDE THE RIGHT-OF-WAY AT THEIR EXPENSE. THE SALVAGE VALUE OF THE REMOVED EQUIPMENT SHALL BE REFLECTED IN THE CONTRACT BID PRICE.

- 6 EACH PEDESTRIAN PUSHBUTTON
1 EACH CONTROLLER
1 EACH SERVICE INSTALLATION



SOUTHWEST ISLAND



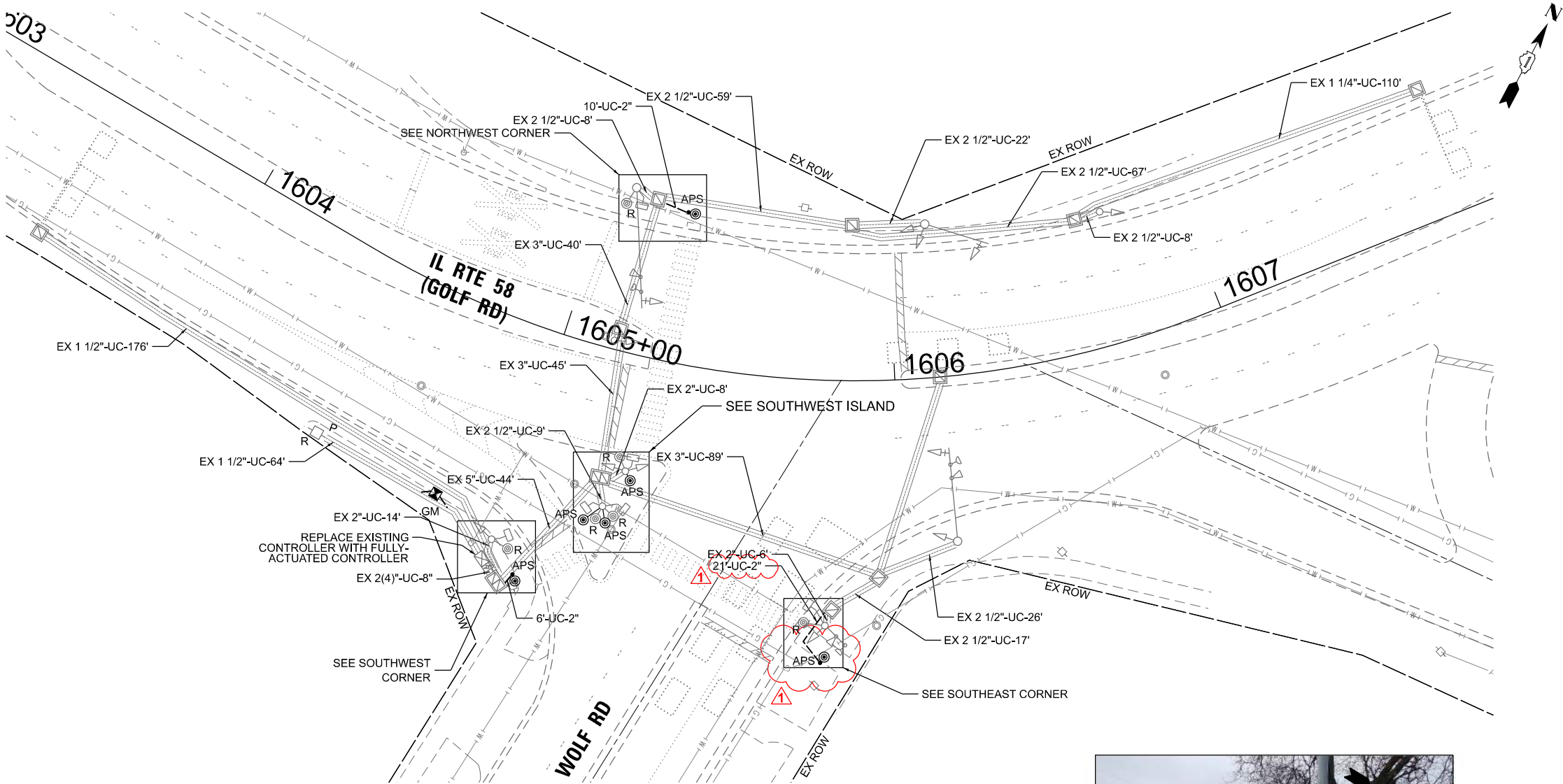
SOUTHWEST CORNER



SOUTHEAST CORNER



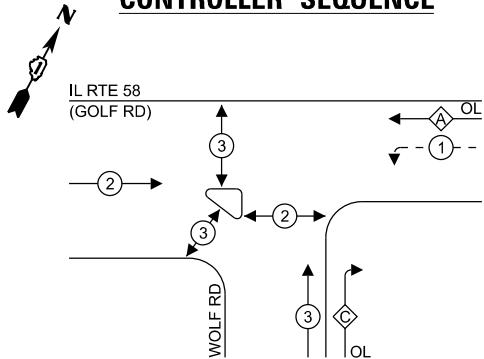
NORTHWEST CORNER



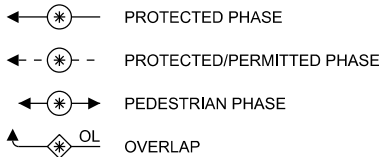
TS 2865
ECON 204

REVISD SHEET 9/9/2025

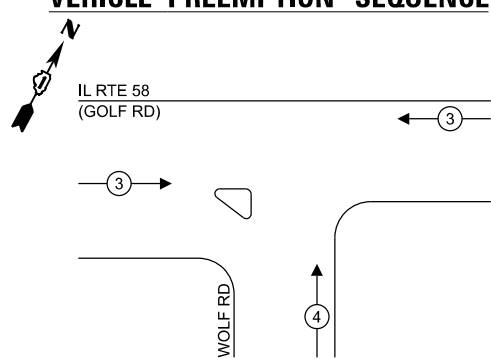
EXISTING AND PROPOSED
CONTROLLER SEQUENCE



LEGEND:



EXISTING AND PROPOSED EMERGENCY
VEHICLE PREEMPTION SEQUENCE



RIGHT TURN OVERLAP
PHASE DESIGNATION:

OVERLAP LETTER	PERMISSIVE PHASE	PROTECTED PHASE
A	= 2	+ 1
C	= 3	+ 1

NOTES:

1. TIMING CONSULTANT SHALL PROGRAM LEADING PEDESTRIAN INTERVAL FOR PHASE 3. THIS WORK SHALL BE PAID FOR UNDER RE-OPTIMIZE TRAFFIC SIGNAL SYSTEM LEVEL 1.
2. THE TRAFFIC SIGNAL CONTROL EQUIPMENT FOR THIS LOCATION SHALL BE ECONOLITE TO MATCH EXISTING ADJACENT SYSTEM.

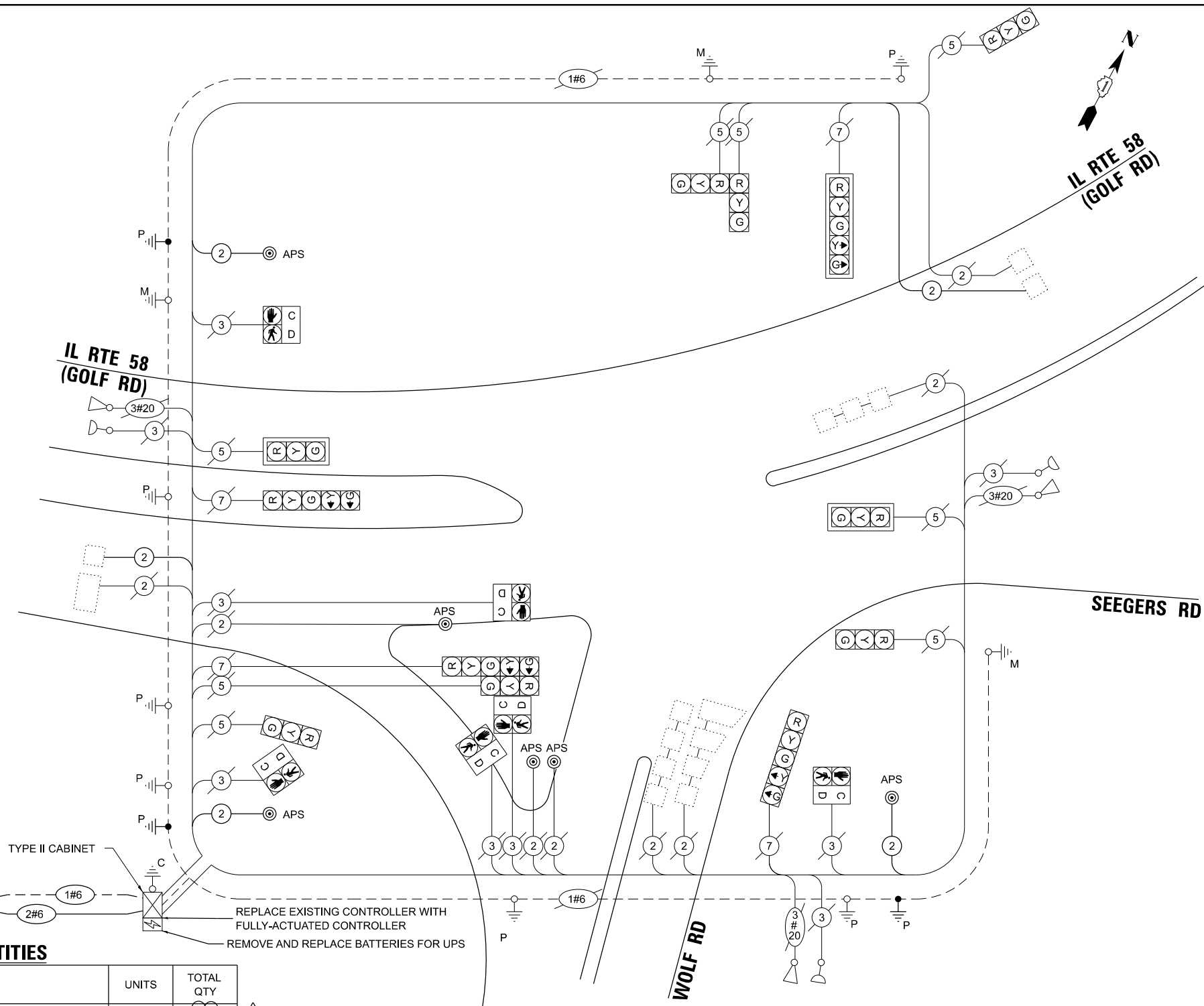
TRAFFIC SIGNAL
ELECTRICAL SERVICE REQUIREMENTS

TYPE	QUANTITY	UNIT	WATTAGE	TOTAL WATTAGE
SIGNAL HEAD	3 - SECTION	8	11	88.0
	4 - SECTION	-	14	-
	5 - SECTION	4	13	52.0
PROGRAMMABLE SIGNALS				
	3 - SECTION	-	22	-
	4 - SECTION	-	32	-
	5 - SECTION	-	28	-
PED. SIGNAL	6	15	90	
CONTROLLER	1	150	150.0	
MASTER CONTROLLER	-	100	-	
UPS	1	25	25.0	
DETECTION	RADAR	-	20	-
	VIDEO	-	20	-
BLANK-OUT SIGN	-	25	-	
NETWORK SWITCH II OR III	-	35	-	
CELLULAR MODEM	-	15	-	
TOTAL UPS SIZING =				405.0
UPS CHARGING	1	225	225.0	
BATTERY HEATER MAT	1	180	180.0	
CABINET HEATER	1	200	200.0	
FLASHER	-	15	-	
LED STREET NAME SIGN	-	120	-	
LUMINAIRE	-	240	-	
TOTAL SERVICE WIRE SIZING =				1010.0
ENERGY COSTS TO:				
ILLINOIS DEPARTMENT OF TRANSPORTATION				
201 W CENTER COURT				
SCHAUMBURG, IL 60196-1096				
ENERGY SUPPLY: CONTACT: JAMES CAMPBELL				
PHONE: 630-940-6805				
COMPANY: COMMONWEALTH EDISON				
ACCOUNT NUMBER: - 6015004000				

SCHEDULE OF QUANTITIES

ITEM DESCRIPTION	UNITS	TOTAL QTY
UNDERGROUND CONDUIT, GALVANIZED STEEL, 2" DIA.	FOOT	37
MAINTENANCE OF EXISTING TRAFFIC SIGNAL INSTALLATION	EACH	1
ELECTRIC CABLE IN CONDUIT, SIGNAL NO. 14 2C	FOOT	559
ELECTRIC CABLE IN CONDUIT, LEAD-IN, NO. 14 1 PAIR	FOOT	636
ELECTRIC CABLE IN CONDUIT, SERVICE, NO. 6 2 C	FOOT	38
ELECTRIC CABLE IN CONDUIT, EQUIPMENT GROUNDING CONDUCTOR, NO. 6 1C	FOOT	288
CONCRETE FOUNDATION, TYPE A	FOOT	4
DRILL EXISTING HANDHOLE	EACH	3
INDUCTIVE LOOP DETECTOR	EACH	2
REMOVE ELECTRIC CABLE FROM CONDUIT	FOOT	66
REMOVE EXISTING TRAFFIC SIGNAL EQUIPMENT	EACH	1
SERVICE INSTALLATION, GROUND MOUNTED, METERED	EACH	1
PEDESTRIAN SIGNAL POST, 5 FT.	EACH	3
FULL-ACTUATED CONTROLLER IN EXISTING CABINET	EACH	1
REMOVE AND REPLACE BATTERIES FOR UNINTERRUPTABLE POWER SUPPLY, EXTENDED	EACH	1
ACCESSIBLE PEDESTRIAN SIGNALS	EACH	6
CONCRETE FOUNDATION, TYPE A 12-INCH DIAMETER	FOOT	12
RE-OPTIMIZE TRAFFIC SIGNAL SYSTEM LEVEL 1	EACH	1

CABLE PLAN
(NOT TO SCALE)



STATE OF ILLINOIS
DEPARTMENT OF TRANSPORTATION

EXISTING CABLE PLAN, EXISTING PHASE DESIGNATION DIAGRAM AND
EMERGENCY VEHICLE PREEMPTION SEQUENCE, AND SCHEDULE OF QUANTITIES
IL ROUTE 58 (GOLF ROAD) AT WOLF ROAD

SCALE: N.T.S. SHEET 2 OF 2 SHEETS STA. TO STA.

REVISED SHEET 9/9/2025

TS 2865
ECON 204

F.A.U. RTE.	SECTION	COUNTY	TOTAL SHEETS	SHEET NO.
XXX	2024-964-TS	COOK	89	44
CONTRACT NO. 62W89				
ILLINOIS FED. AID PROJECT				

MODEL: D:\atlas\2024\TS2865\TS2865.dwg
FILE NAME: 2024-964-TS.dwg
PROJECT: TS2865-IL-58 (GOLF RD) AT WOLF RD
SHEET: 118 OF 118
DATE: 9/4/25
DRAWN BY: JLC
CHECKED BY: DB
DATE: 08/28/2025

ATLAS
ATLAS TECHNICAL CONSULTANTS, LLC
100 S. WACKER DRIVE, SUITE 400
CHICAGO, IL 60606

USER NAME	= dbriones
PLOT SCALE	= 40,000' / in.
PLOT DATE	= 9/4/2025

DESIGNED	- DLB	REVISED	- 9/4/25
DRAWN	- JK	REVISED	-
CHECKED	- DB	REVISED	-
DATE	- 08/28/2025	REVISED	-

NOTES:

- THIS PLAN IS FOR THE INSTALLATION OF APS PUSH BUTTONS AND LEADING PEDESTRIAN INTERVAL PROGRAMMING.
- ALL PUSH BUTTONS SHALL BE APS.
- APS SHALL BE PLACED PARALLEL TO THE CORRESPONDING CROSSWALKS.
- CONTRACTOR SHALL CONFIRM THE FINAL LOCATION OF THE PEDESTRIAN EQUIPMENT WITH THE TRAFFIC SIGNAL ENGINEER BEFORE INSTALLATION.
- ALL EXISTING TRAFFIC SIGNAL CABLE NO LONGER REQUIRED SHALL BE REMOVED.
- SIDEWALK TO BE BROUGHT UP TO PROWAG STANDARDS ON A FUTURE CONTRACT.
- EACH DETECTOR LOOP SHALL HAVE ITS OWN 1" COILABLE NON-METALLIC CONDUIT BETWEEN THE EDGE OF PAVEMENT AND THE ADJACENT HANDHOLE AS SHOWN ON THE PLANS AND AS STATED IN THE TRAFFIC SIGNAL SPECIFICATIONS.

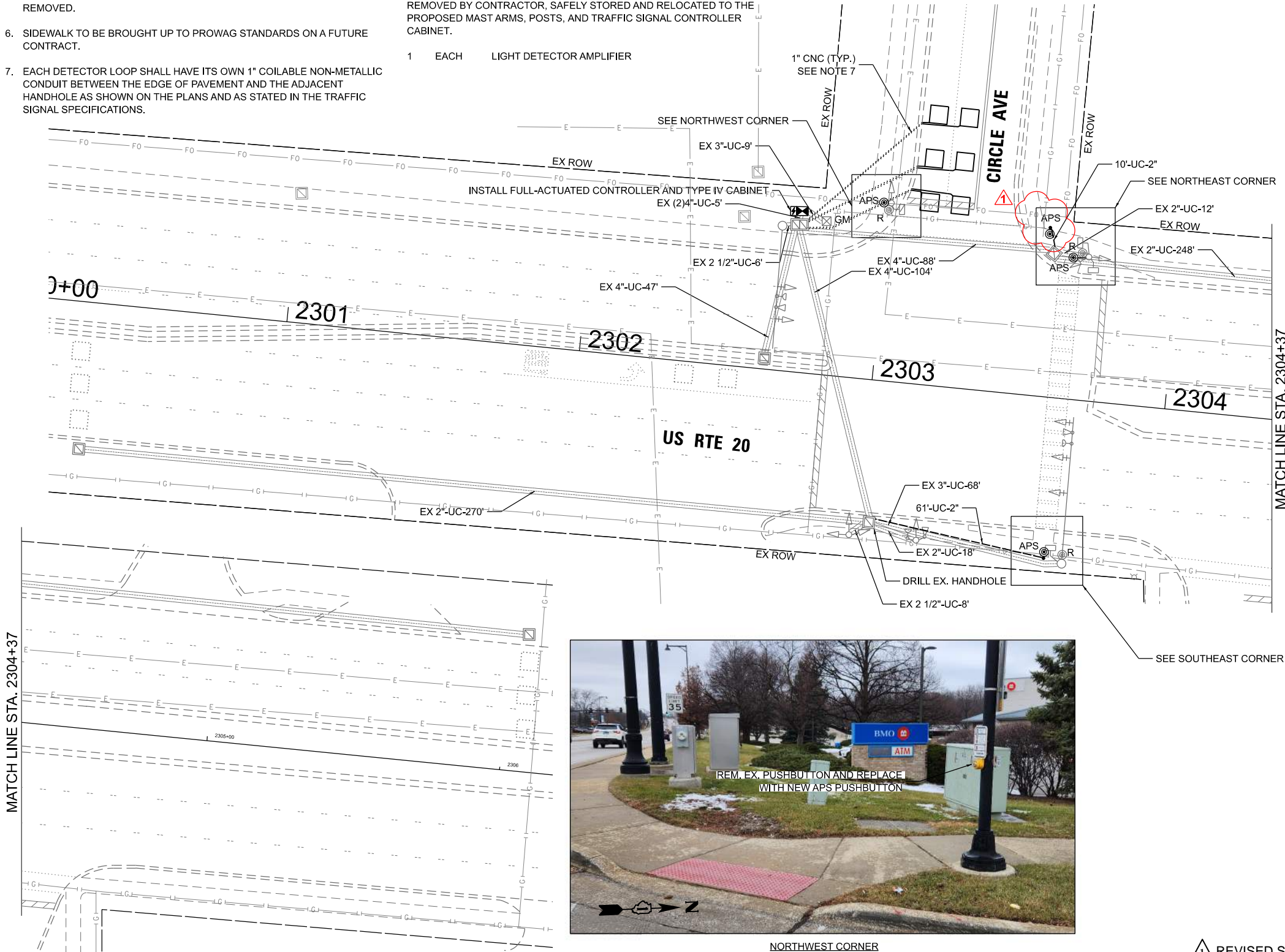
REMOVAL AND RELOCATION NOTES:

THE FOLLOWING ITEMS SHALL BE REMOVED BY THE CONTRACTOR AND SHALL BE DISPOSED OF BY THEM OUTSIDE THE RIGHT-OF-WAY AT THEIR EXPENSE. THE SALVAGE VALUE OF THE REMOVED EQUIPMENT SHALL BE REFLECTED IN THE CONTRACT BID PRICE.

- | | | |
|---|------|---|
| 1 | EACH | CONTROLLER (ASC/2C-2100) AND CABINET (TS1) COMPLETE |
| 3 | EACH | PEDESTRIAN PUSH-BUTTON |
| 1 | EACH | UPS |

THE FOLLOWING EXISTING TRAFFIC SIGNAL EQUIPMENT SHALL BE REMOVED BY CONTRACTOR, SAFELY STORED AND RELOCATED TO THE PROPOSED MAST ARMS, POSTS, AND TRAFFIC SIGNAL CONTROLLER CABINET.

- | | | |
|---|------|--------------------------|
| 1 | EACH | LIGHT DETECTOR AMPLIFIER |
|---|------|--------------------------|



NORTHEAST CORNER



SOUTHEAST CORNER



NORTHWEST CORNER



TS 4605
ECON 47

REVISED SHEET 9/9/2025

STATE OF ILLINOIS
DEPARTMENT OF TRANSPORTATION

TRAFFIC SIGNAL INSTALLATION PLAN
US ROUTE 20 AT CIRCLE AVENUE

SCALE: 1"=20' SHEET 1 OF 20 SHEETS STA. TO STA.

F.A.U. RTE.	SECTION	COUNTY	TOTAL SHEETS	SHEET NO.
XXX	2024-964-TS	DUPAGE	89	55
CONTRACT NO. 62W89				
ILLINOIS FED. AID PROJECT				

MODEL: Definitive.dgn
FILE NAME: S:\Projects\2216-DDOT\1 Ver Final\TES & Mgmt - TSIP\Project Work\CADD\CADD_Sheets\25_TS 4605 - US 20 (Lake St) at Circle Ave\2524605b-mis50-US 20 at CIRCLE-SIGNAL_Plan.dgn

ATLAS
ATLAS TECHNICAL CONSULTANTS, LLC
100 S. WACKER DRIVE, SUITE 400
CHICAGO, IL 60606

USER NAME = dbriones	DESIGNED - DLB	REVISED - 9/4/25
DRAWN - JK	CHECKED - DB	REVISED -
PLOT SCALE = 40,000' / in.	DATE - 08/28/2025	REVISED -
PLOT DATE = 9/4/2025		

NOTES:

- THIS PLAN IS FOR THE INSTALLATION OF APS PUSH BUTTONS AND LEADING PEDESTRIAN INTERVAL PROGRAMMING.
- ALL PUSH BUTTONS SHALL BE APS.
- APS SHALL BE PLACED PARALLEL TO THE CORRESPONDING CROSSWALKS.
- CONTRACTOR SHALL CONFIRM THE FINAL LOCATION OF THE PEDESTRIAN EQUIPMENT WITH THE TRAFFIC SIGNAL ENGINEER BEFORE INSTALLATION.
- ALL EXISTING TRAFFIC SIGNAL CABLE NO LONGER REQUIRED SHALL BE REMOVED.
- SIDEWALK TO BE BROUGHT UP TO PROWAG STANDARDS ON A FUTURE CONTRACT.
- THE GROUND MOUNTED, METERED SERVICE SHALL BE CONSTRUCTED ADJACENT TO THE EXISTING SERVICE CONDUIT PRIOR TO DISCONNECTING THE EXISTING SERVICE. INCLUDE A 5' STUB OF 2" CONDUIT FROM THE GM FOR FUTURE CONNECTION. THE COST OF THE 5' STUB, 2" UNDERGROUND CONDUIT AND SPLICE TO EXISTING SERVICE CONDUIT SHALL BE INCLUDED IN THE COST OF CONCRETE FOUNDATION, TYPE A. THE TRAFFIC SIGNALS SHALL REMAIN OPERATIONAL THE ENTIRE TIME THE SWITCH OVER BETWEEN EXISTING SERVICE AND PROPOSED SERVICE IS MADE.

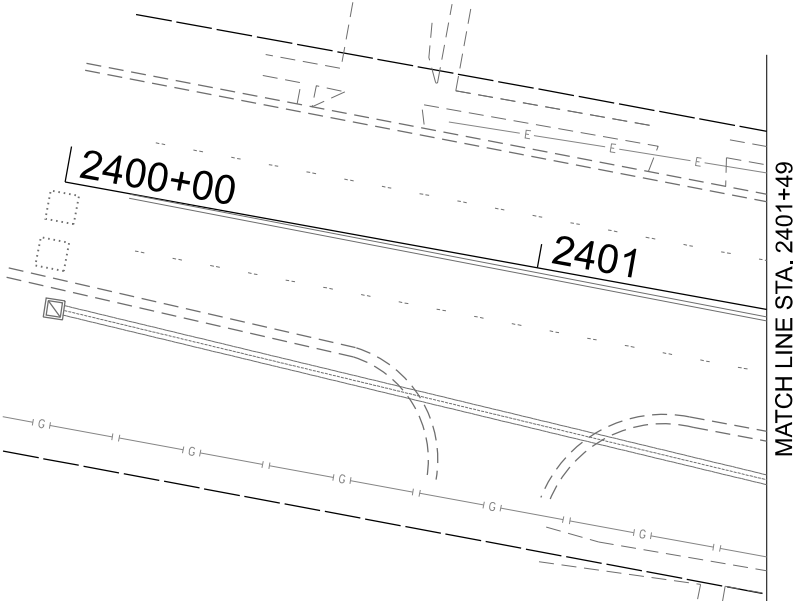
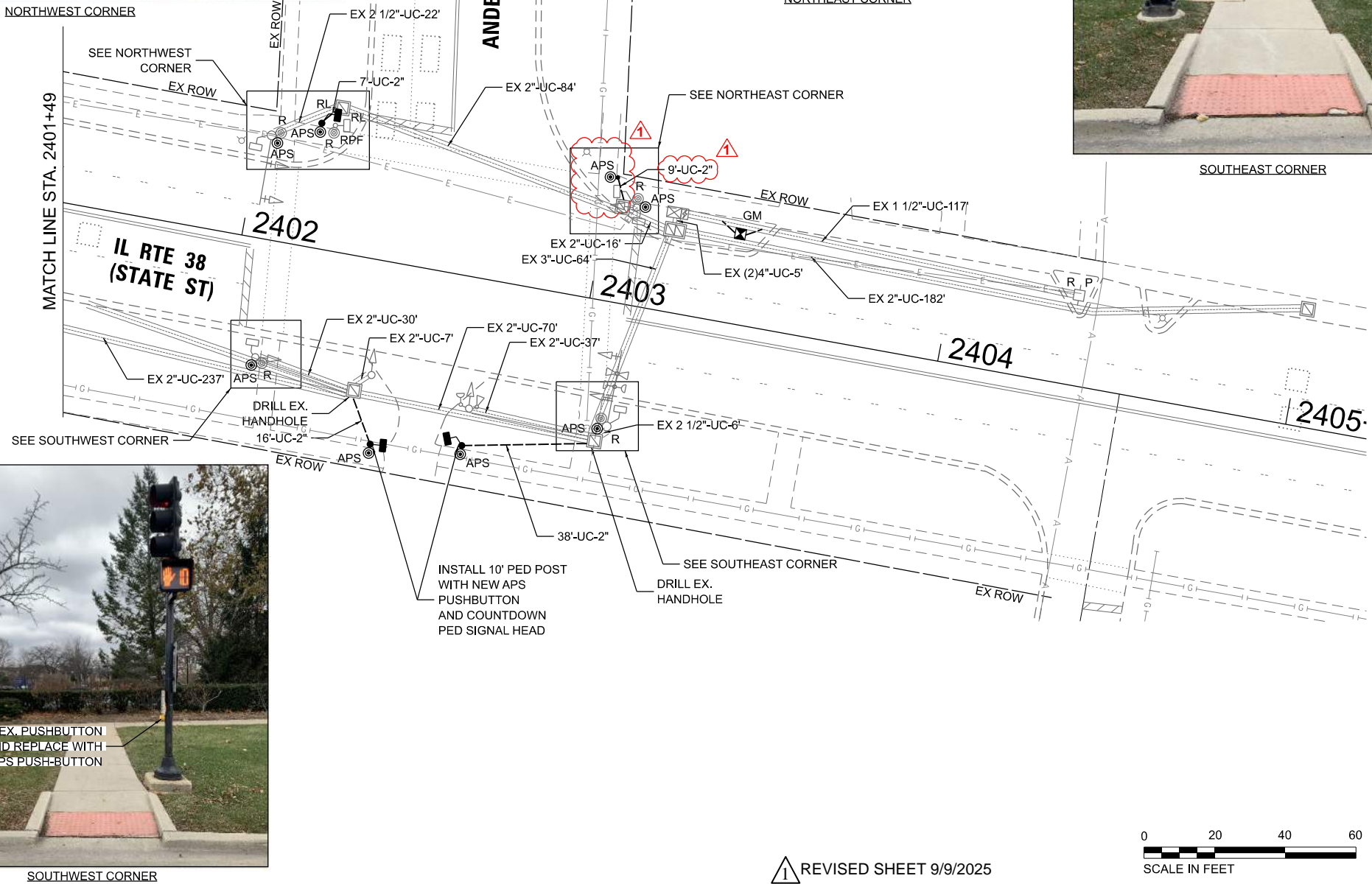
REMOVAL AND RELOCATION NOTES:

THE FOLLOWING ITEMS SHALL BE REMOVED BY THE CONTRACTOR AND SHALL BE DISPOSED OF BY THEM OUTSIDE THE RIGHT-OF-WAY AT THEIR EXPENSE. THE SALVAGE VALUE OF THE REMOVED EQUIPMENT SHALL BE REFLECTED IN THE CONTRACT BID PRICE.

- | | | |
|---|------|------------------------|
| 5 | EACH | PEDESTRIAN PUSH-BUTTON |
| 1 | EACH | PEDESTRIAN POST |
| 1 | EACH | SERVICE INSTALLATION |

THE FOLLOWING EXISTING TRAFFIC SIGNAL EQUIPMENT SHALL BE REMOVED BY THE CONTRACTOR AND SHALL BE RELOCATED TO THE PROPOSED TRAFFIC SIGNAL EQUIPMENT INDICATED IN THE PLAN.

- | | | |
|---|------|------------------------|
| 1 | EACH | PEDESTRIAN SIGNAL HEAD |
|---|------|------------------------|



REVISD SHEET 9/9/2025

TS 10955
EAGLE 2G

MODEL Defaul
FILE NAME: S:\Projects\2216-DDOT\1 Ver PHIL TES & Mgmt - TSIP\Project Work\CADD\CADD_Sheets\26_TS 10955 - L 38 at Anderson Blvd\26W89-eagle2g.dgn
PROJECT: 2216-DDOT\1 Ver PHIL TES & Mgmt - TSIP\Project Work\CADD\CADD_Sheets\26_TS 10955 - L 38 at Anderson Blvd\26W89-eagle2g.dgn

ATLAS
ATLAS TECHNICAL CONSULTANTS, LLC
100 S. WACKER DRIVE, SUITE 400
CHICAGO, IL 60606

USER NAME	= dbriones
DESIGNED	- DLB
DRAWN	- JK
CHECKED	- DB
DATE	- 08/28/2025
PLOT SCALE	= 40,000' / in.
PLOT DATE	= 9/4/2025

REVISED	- 9/4/25
REVISED	-
REVISED	-
REVISED	-

STATE OF ILLINOIS
DEPARTMENT OF TRANSPORTATION

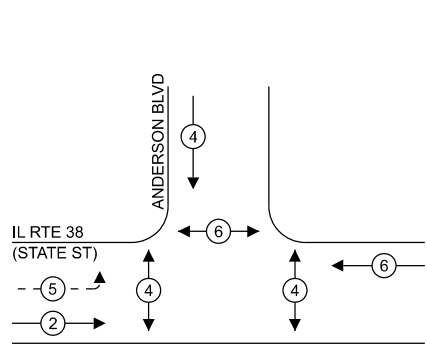
TRAFFIC SIGNAL INSTALLATION PLAN
IL ROUTE 38 (STATE STREET) AT ANDERSON BOULEVARD

SCALE: 1"=20' SHEET 1 OF 2 SHEETS STA. TO STA.

F.A.U. RTE.	SECTION	COUNTY	TOTAL SHEETS	SHEET NO.
XXX	2024-964-TS	KANE	89	57
CONTRACT NO. 62W89				
ILLINOIS FED. AID PROJECT				

MODEL: Definitive
FILE NAME: S:\Projects\2216-DDT-D1_Ver-PH1-IES & Mgmt - TSIP\Project Work\CADD\CADD_Sheets\38_IL 10955 - 1_38 at Anderson Blvd\DWG\Sheet38_IL 38 at Anderson-Cable Plan.dgn

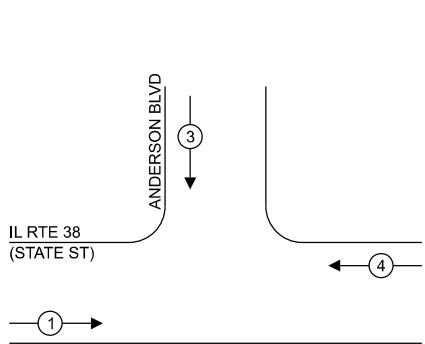
EXISTING AND PROPOSED
CONTROLLER SEQUENCE



LEGEND:

- ← * → PROTECTED PHASE
- ← * - PROTECTED/PERMITTED PHASE
- ← * → PEDESTRIAN PHASE
- ← * OL OVERLAP

EXISTING AND PROPOSED EMERGENCY
VEHICLE PREEMPTION SEQUENCE



NOTES:

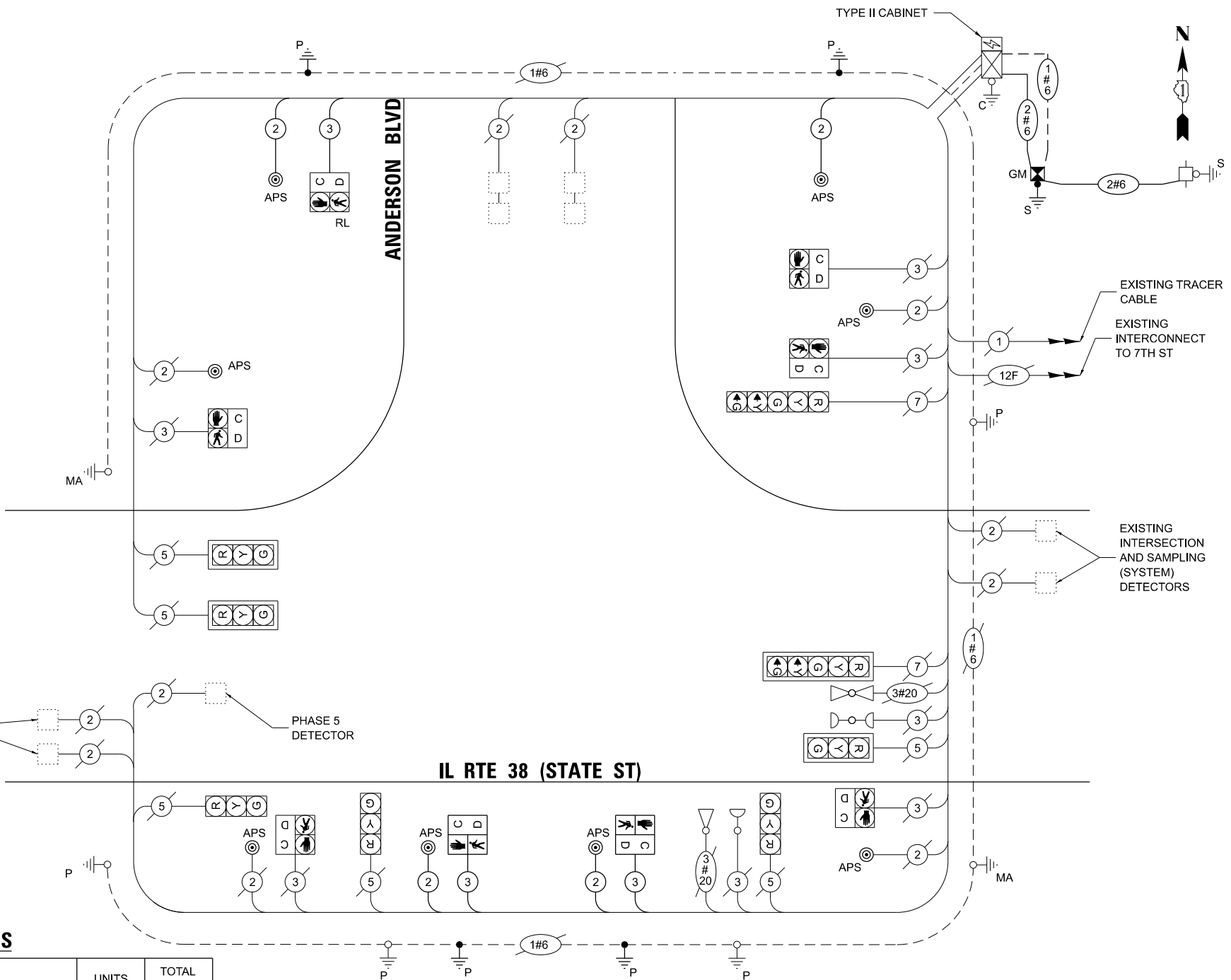
1. TIMING CONSULTANT SHALL PROGRAM LEADING PEDESTRIAN INTERVAL FOR PHASE 4. THIS WORK SHALL BE PAID FOR UNDER RE-OPTIMIZE TRAFFIC SIGNAL SYSTEM LEVEL 1.

TRAFFIC SIGNAL
ELECTRICAL SERVICE REQUIREMENTS

TYPE	QUANTITY	UNIT	WATTAGE	TOTAL
SIGNAL HEAD	3 - SECTION	6	11	66.0
	4 - SECTION	-	14	-
	5 - SECTION	2	13	26.0
PROGRAMMABLE SIGNALS				
	3 - SECTION	-	22	-
	4 - SECTION	-	32	-
	5 - SECTION	-	28	-
PED. SIGNAL	6	15	90.0	
CONTROLLER	1	150	150.0	
MASTER CONTROLLER	-	100	-	
UPS	1	25	25.0	
DETECTION	RADAR	-	20	-
	VIDEO	-	20	-
BLANK-OUT SIGN	-	25	-	
NETWORK SWITCH II OR III	-	35	-	
CELLULAR MODEM	-	15	-	
TOTAL UPS SIZING =		357.0		
UPS CHARGING	1	225	225.0	
BATTERY HEATER MAT	1	180	180.0	
CABINET HEATER	1	200	200.0	
FLASHER	-	15	-	
LED STREET NAME SIGN	-	120	-	
LUMINAIRE	-	240	-	
TOTAL SERVICE WIRE SIZING =		962.0		
ENERGY COSTS TO: CITY OF GENEVA 22 S FIRST STREET GENEVA, IL 60134				
ENERGY SUPPLY: CONTACT: PUBLIC WORKS - ELECTRIC DIVISION PHONE: 630-424-5704 COMPANY: CITY OF GENEVA ACCOUNT NUMBER: -				

SCHEDULE OF QUANTITIES

ITEM DESCRIPTION	UNITS	TOTAL QTY
UNDERGROUND CONDUIT, GALVANIZED STEEL, 2" DIA.	FOOT	83
MAINTENANCE OF EXISTING TRAFFIC SIGNAL INSTALLATION	EACH	1
ELECTRIC CABLE IN CONDUIT, SIGNAL NO. 14 2C	FOOT	556
ELECTRIC CABLE IN CONDUIT, SIGNAL NO. 14 3C	FOOT	531
ELECTRIC CABLE IN CONDUIT, SERVICE, NO. 6 2 C	FOOT	31
ELECTRIC CABLE IN CONDUIT, EQUIPMENT GROUNDING CONDUCTOR, NO. 6 1C	FOOT	169
CONCRETE FOUNDATION, TYPE A	FOOT	4
DRILL EXISTING HANDHOLE	EACH	4
PEDESTRIAN SIGNAL HEAD, LED, 1-FACE, BRACKET MOUNTED WITH COUNTDOWN TIMER	EACH	2
RELOCATE EXISTING TRAFFIC SIGNAL EQUIPMENT	EACH	1
MODIFY EXISTING CONTROLLER	EACH	1
REMOVE ELECTRIC CABLE FROM CONDUIT	FOOT	120
REMOVE EXISTING TRAFFIC SIGNAL EQUIPMENT	EACH	1
REMOVE EXISTING CONCRETE FOUNDATION	EACH	1
SERVICE INSTALLATION, GROUND MOUNTED, METERED	EACH	1
PEDESTRIAN SIGNAL POST, 10 FT.	EACH	3
PEDESTRIAN SIGNAL POST, 5 FT.	EACH	1
PAINT NEW PEDESTRIAN PUSH-BUTTON POST	EACH	4
ACCESSIBLE PEDESTRIAN SIGNALS	EACH	8
CONCRETE FOUNDATION, TYPE A 12-INCH DIAMETER	FOOT	16
RE-OPTIMIZE TRAFFIC SIGNAL SYSTEM LEVEL 1	EACH	1



CABLE PLAN
(NOT TO SCALE)

REVISED SHEET 9/9/2025

TS 10955
EAGLE 2G

EXISTING CABLE PLAN, EXISTING PHASE DESIGNATION DIAGRAM AND
EMERGENCY VEHICLE PREEMPTION SEQUENCE, AND SCHEDULE OF QUANTITIES
IL ROUTE 38 (STATE STREET) AT ANDERSON BOULEVARD

SCALE: N.T.S. SHEET 2 OF 2 SHEETS STA. TO STA.

F.A.U. RTE.	SECTION	COUNTY	TOTAL SHEETS	SHEET NO.
XXX	2024-964-TS	KANE	89	58
CONTRACT NO. 62W89				
ILLINOIS FED. AID PROJECT				

ATLAS
ATLAS TECHNICAL CONSULTANTS, LLC
100 S. WACKER DRIVE, SUITE 400
CHICAGO, IL 60606

USER NAME = dbriones
PLOT SCALE = 40,000' / in.
PLOT DATE = 9/4/2025

DESIGNED - DLB	REVISED - 9/4/25
DRAWN - JK	REVISED -
CHECKED - DB	REVISED -
DATE - 08/28/2025	REVISED -

STATE OF ILLINOIS
DEPARTMENT OF TRANSPORTATION

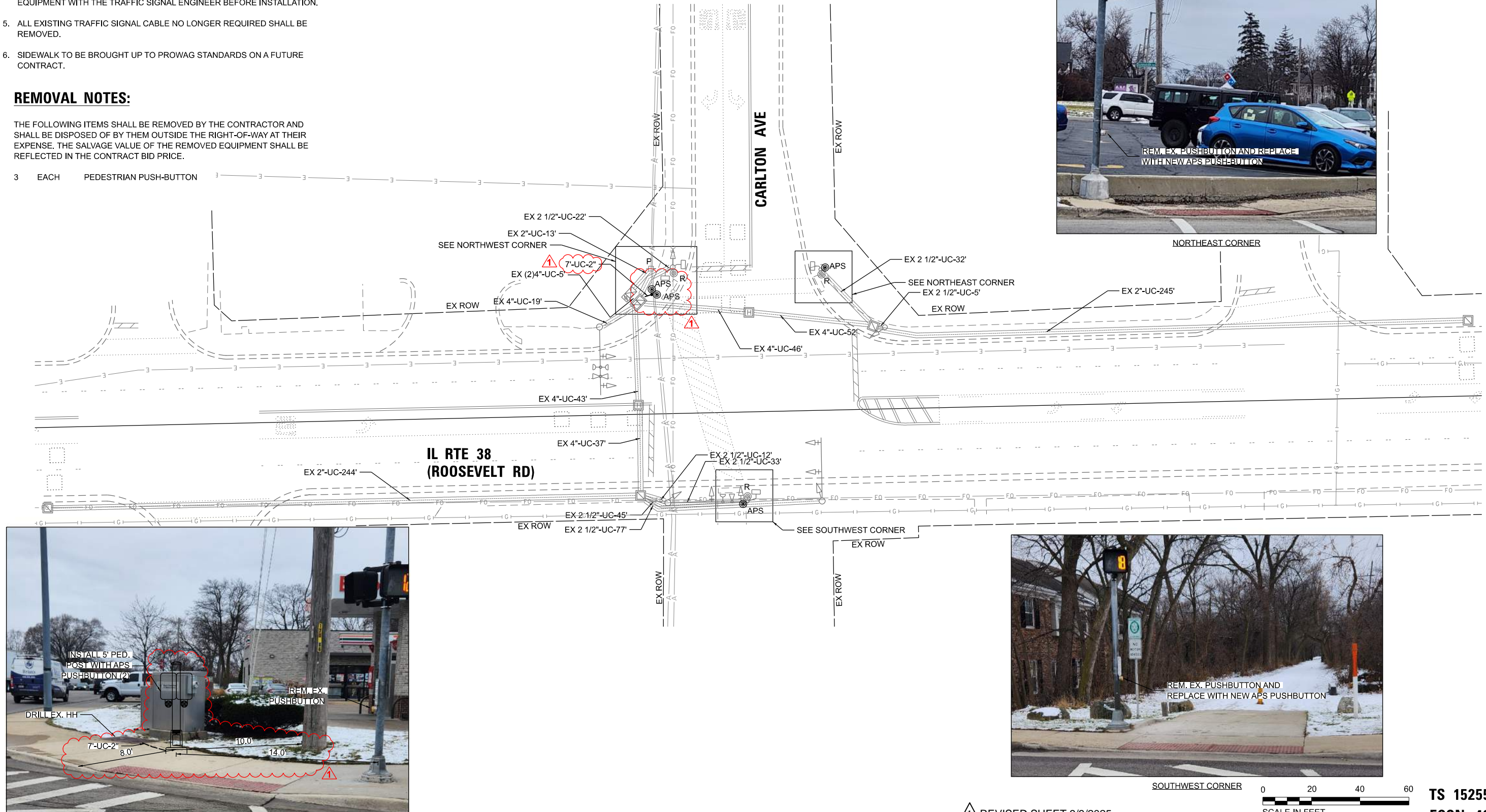
NOTES:

1. THIS PLAN IS FOR THE INSTALLATION OF APS PUSH BUTTONS AND LEADING PEDESTRIAN INTERVAL PROGRAMMING.
2. ALL PUSH BUTTONS SHALL BE APS.
3. APS SHALL BE PLACED PARALLEL TO THE CORRESPONDING CROSSWALKS.
4. CONTRACTOR SHALL CONFIRM THE FINAL LOCATION OF THE PEDESTRIAN EQUIPMENT WITH THE TRAFFIC SIGNAL ENGINEER BEFORE INSTALLATION.
5. ALL EXISTING TRAFFIC SIGNAL CABLE NO LONGER REQUIRED SHALL BE REMOVED.
6. SIDEWALK TO BE BROUGHT UP TO PROWAG STANDARDS ON A FUTURE CONTRACT.

REMOVAL NOTES:

THE FOLLOWING ITEMS SHALL BE REMOVED BY THE CONTRACTOR AND SHALL BE DISPOSED OF BY THEM OUTSIDE THE RIGHT-OF-WAY AT THEIR EXPENSE. THE SALVAGE VALUE OF THE REMOVED EQUIPMENT SHALL BE REFLECTED IN THE CONTRACT BID PRICE.

- 3 EACH PEDESTRIAN PUSH-BUTTON



NORTHEAST CORNER



NORTHWEST CORNER



SOUTHWEST CORNER

REVISD SHEET 9/9/2025



TS 15255
ECON 40

MODEL: Definitive
FILE NAME: S:\Projects\2216-DDOT\1 Ver Final\TES & Mgmt - TSP\Project Work\CADD\CADD_Sheets\28_TS 15255 - IL 38 (Roosevelt Rd) at Carlton Ave\DDOT\Signal Plan.dgn

ATLAS
ATLAS TECHNICAL CONSULTANTS, LLC
100 S. WACKER DRIVE, SUITE 400
CHICAGO, IL 60606

USER NAME	= dbriones
DESIGNED	- DLB
DRAWN	- JK
PLOT SCALE	= 40,000' / in.
PLOT DATE	= 9/4/2025

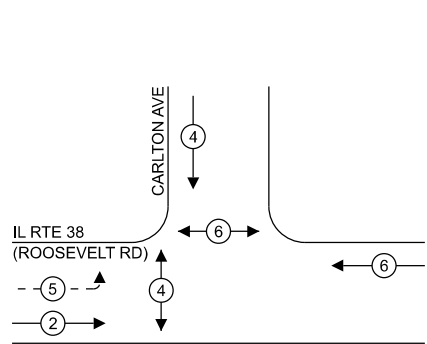
REVISED	- 9/4/25
REVISD	-
REVISD	-
REVISD	-

STATE OF ILLINOIS
DEPARTMENT OF TRANSPORTATION

TRAFFIC SIGNAL INSTALLATION PLAN	
IL ROUTE 38 (ROOSEVELT ROAD) AT CARLTON AVENUE	
SCALE: 1"=20'	SHEET 1 OF 20 SHEETS
STA.	TO STA.

F.A.U. RTE.	SECTION	COUNTY	TOTAL SHEETS	SHEET NO.
XXX	2024-964-TS	DUPAGE	89	61
CONTRACT NO. 62W89				
ILLINOIS FED. AID PROJECT				

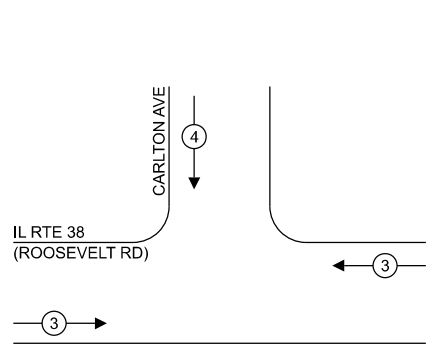
EXISTING AND PROPOSED
CONTROLLER SEQUENCE



LEGEND:

- PROTECTED PHASE
- PROTECTED/PERMITTED PHASE
- PEDESTRIAN PHASE
- OVERLAP

EXISTING AND PROPOSED EMERGENCY
VEHICLE PREEMPTION SEQUENCE



NOTES:

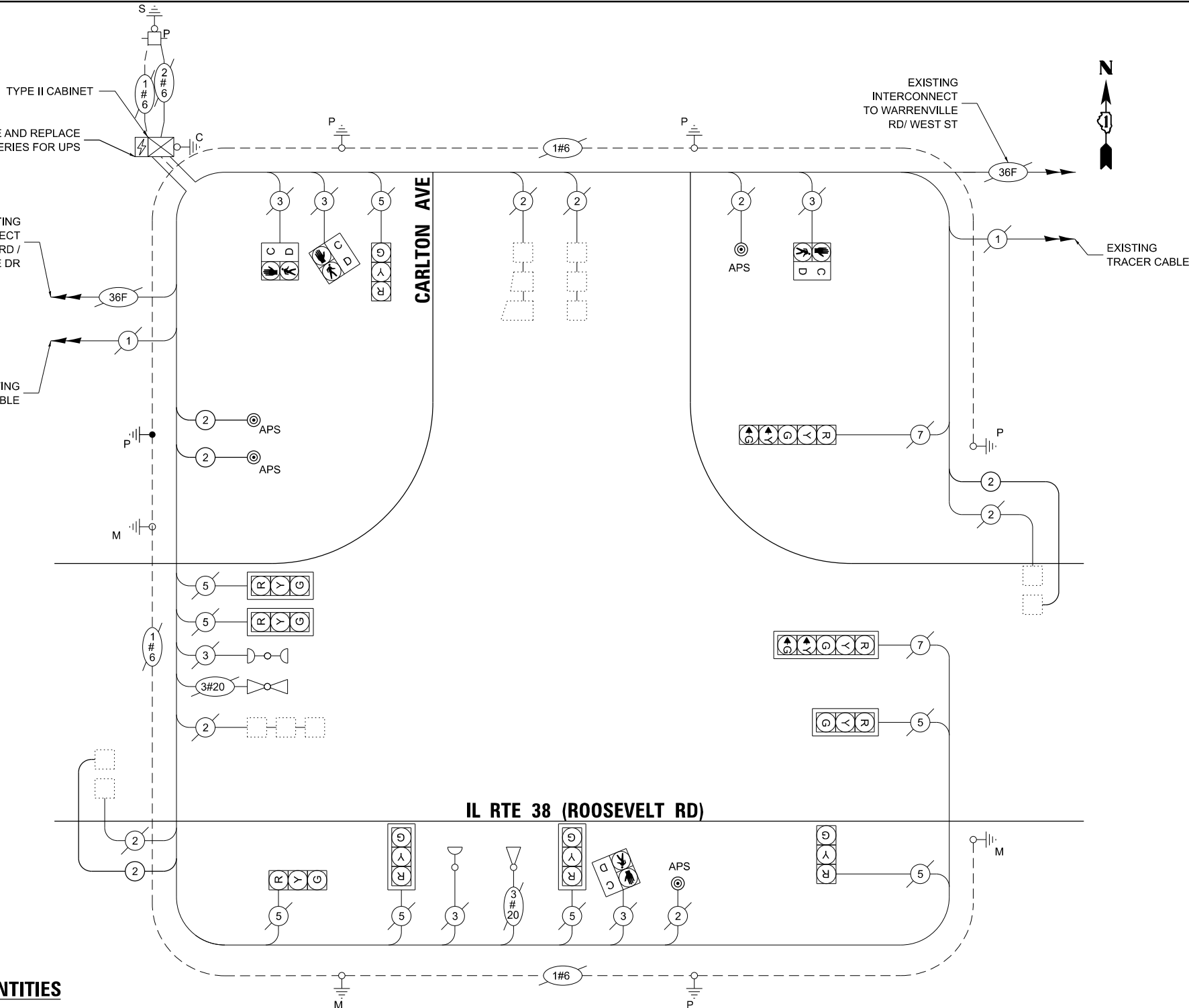
- TIMING CONSULTANT SHALL PROGRAM LEADING PEDESTRIAN INTERVAL FOR PHASE 4. THIS WORK SHALL BE PAID FOR UNDER RE-OPTIMIZE TRAFFIC SIGNAL SYSTEM LEVEL 1.

TRAFFIC SIGNAL
ELECTRICAL SERVICE REQUIREMENTS

TYPE	QUANTITY	UNIT WATTAGE	TOTAL WATTAGE
SIGNAL HEAD	3 - SECTION	8	11
	4 - SECTION	-	14
	5 - SECTION	2	13
PROGRAMMABLE SIGNALS			
	3 - SECTION	-	22
	4 - SECTION	-	32
	5 - SECTION	-	28
PED. SIGNAL	4	15	60.0
CONTROLLER	1	150	150.0
MASTER CONTROLLER	-	100	-
UPS	1	25	25.0
DETECTION	RADAR	-	20
	VIDEO	-	20
BLANK-OUT SIGN	-	25	-
NETWORK SWITCH II OR III	-	35	-
CELLULAR MODEM	-	15	-
TOTAL UPS SIZING =		349.0	
UPS CHARGING	1	225	225.0
BATTERY HEATER MAT	1	180	180.0
CABINET HEATER	1	200	200.0
FLASHER	-	15	-
LED STREET NAME SIGN	-	120	-
LUMINAIRE	-	240	-
TOTAL SERVICE WIRE SIZING =		954.0	
ENERGY COSTS TO:			
CITY OF WHEATON			
303 W WESLEY ST			
WHAETON, IL 60187-0727			
ENERGY SUPPLY: CONTACT: ANTONIO RIOS			
PHONE: 630-696-6855			
COMPANY: COMMONWEALTH EDISON			
ACCOUNT NUMBER: - 5845811222			

SCHEDULE OF QUANTITIES

ITEM DESCRIPTION	UNITS	TOTAL QTY
UNDERGROUND CONDUIT, GALVANIZED STEEL, 2" DIA.	FOOT	7
MAINTENANCE OF EXISTING TRAFFIC SIGNAL INSTALLATION	EACH	1
ELECTRIC CABLE IN CONDUIT, SIGNAL NO. 14 2C	FOOT	87
ELECTRIC CABLE IN CONDUIT, LEAD-IN, NO. 14 1 PAIR	FOOT	744
ELECTRIC CABLE IN CONDUIT, EQUIPMENT GROUNDING CONDUCTOR, NO. 6 1C	FOOT	78
DRILL EXISTING HANDHOLE	EACH	1
INDUCTIVE LOOP DETECTOR	EACH	2
MODIFY EXISTING CONTROLLER	EACH	1
REMOVE ELECTRIC CABLE FROM CONDUIT	FOOT	124
REMOVE EXISTING TRAFFIC SIGNAL EQUIPMENT	EACH	1
PEDESTRIAN SIGNAL POST, 5 FT.	EACH	1
REMOVE AND REPLACE BATTERIES FOR UNINTERRUPTABLE POWER SUPPLY, EXTENDED	EACH	1
ACCESSIBLE PEDESTRIAN SIGNALS	EACH	4
CONCRETE FOUNDATION, TYPE A 12-INCH DIAMETER	FOOT	4
RE-OPTIMIZE TRAFFIC SIGNAL SYSTEM LEVEL 1	EACH	1



CABLE PLAN
(NOT TO SCALE)

REVISD SHEET 9/9/2025

TS 15255
ECON 40

STATE OF ILLINOIS
DEPARTMENT OF TRANSPORTATION

EXISTING CABLE PLAN, EXISTING PHASE DESIGNATION DIAGRAM AND
EMERGENCY VEHICLE PREEMPTION SEQUENCE, AND SCHEDULE OF QUANTITIES
IL ROUTE 38 (ROOSEVELT ROAD) AT CARLTON AVENUE

SCALE: N.T.S. SHEET 2 OF 20 SHEETS STA. TO STA.

F.A.U. RTE.	SECTION	COUNTY	TOTAL SHEETS	SHEET NO.
XXX	2024-964-TS	DUPAGE	89	62
CONTRACT NO. 62W89				
ILLINOIS FED. AID PROJECT				

MODEL: Definitive
FILE NAME: S:\Projects\2216-DDT-D1-Ver-Phil-TES & Mgmt-TSIP\Project Work\CADD\CADD_Sheets\23a_TS_15255-4_38 (Roosevelt Rd) at Carlton Ave\DWG\TS-15255-4_38 at Carlton Ave-Cable-Plan.dgn

ATLAS
ATLAS TECHNICAL CONSULTANTS, LLC
100 S. WACKER DRIVE, SUITE 400
CHICAGO, IL 60606

USER NAME =	dbriones
PLOT SCALE =	40,000' = 1 in.
PLOT DATE =	9/4/2025

DESIGNED -	DLB	REVISED -	9/4/25
DRAWN -	JK	REVISED -	
CHECKED -	DB	REVISED -	
DATE -	08/28/2025	REVISED -	

1. THIS PLAN IS FOR THE INSTALLATION OF APS PUSH BUTTONS AND LEADING PEDESTRIAN INTERVAL PROGRAMMING.
2. ALL PUSH BUTTONS SHALL BE APS.
3. APS SHALL BE PLACED PARALLEL TO THE CORRESPONDING CROSSWALKS.
4. CONTRACTOR SHALL CONFIRM THE FINAL LOCATION OF THE PEDESTRIAN EQUIPMENT WITH THE TRAFFIC SIGNAL ENGINEER BEFORE INSTALLATION.
5. ALL EXISTING TRAFFIC SIGNAL CABLE NO LONGER REQUIRED SHALL BE REMOVED.
6. SIDEWALK TO BE BROUGHT UP TO PROWAG STANDARDS ON A FUTURE CONTRACT.

THE FOLLOWING ITEMS SHALL BE REMOVED BY THE CONTRACTOR AND SHALL BE DISPOSED OF BY THEM OUTSIDE THE RIGHT-OF-WAY AT THEIR EXPENSE. THE SALVAGE VALUE OF THE REMOVED EQUIPMENT SHALL BE REFLECTED IN THE CONTRACT BID PRICE.

2	EACH	PEDESTRIAN PUSHBUTTON
1	EACH	CONTROLLER (ASC/3-1000)



1 REVISÉD SHEET 9/9/2025

TRAFFIC SIGNAL INSTALLATION PLAN
31ST STREET AT GOLFVIEW AVENUE

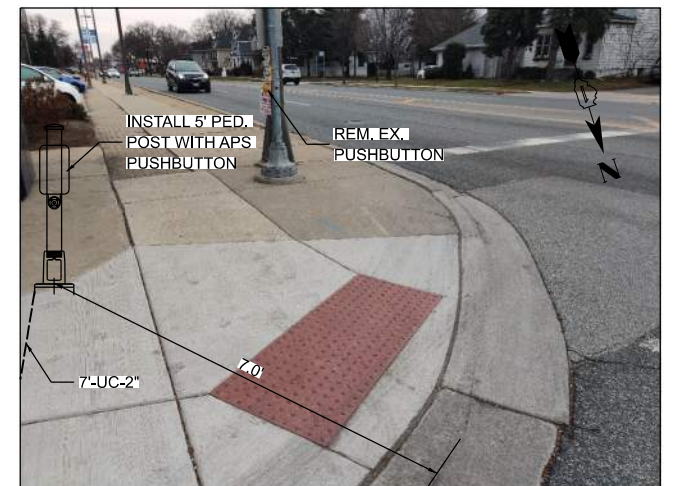
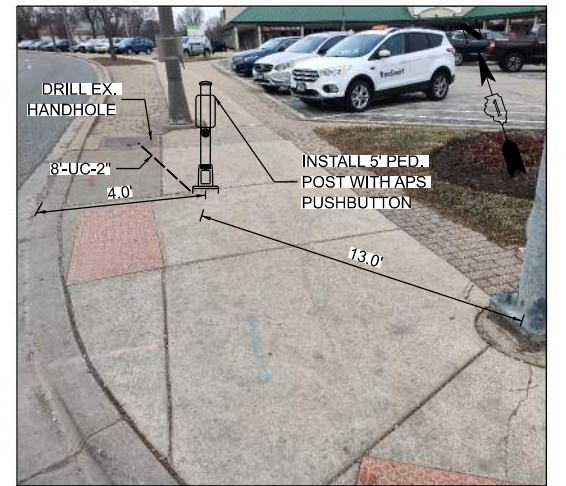
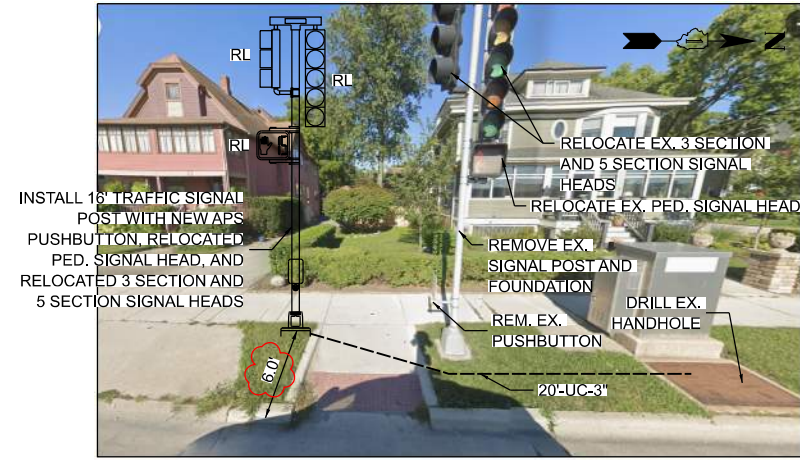
F.A.U. RTE.	SECTION	COUNTY	TOTAL SHEETS	SHEET NO.
XXX	2024-964-TS	COOK	89	67
		CONTRACT NO. 62W89		
		ILLINOIS	FED. AID PROJECT	

1. THIS PLAN IS FOR THE INSTALLATION OF APS PUSH BUTTONS AND LEADING PEDESTRIAN INTERVAL PROGRAMMING.
2. ALL PUSH BUTTONS SHALL BE APS.
3. APS SHALL BE PLACED PARALLEL TO THE CORRESPONDING CROSSWALKS.
4. CONTRACTOR SHALL CONFIRM THE FINAL LOCATION OF THE PEDESTRIAN EQUIPMENT WITH THE TRAFFIC SIGNAL ENGINEER BEFORE INSTALLATION.
5. ALL EXISTING TRAFFIC SIGNAL CABLE NO LONGER REQUIRED SHALL BE REMOVED.
6. SIDEWALK TO BE BROUGHT UP TO PROWAG STANDARDS ON A FUTURE CONTRACT.
7. THE GROUND MOUNTED, METERED SERVICE SHALL BE CONSTRUCTED ADJACENT TO THE EXISTING SERVICE CONDUIT PRIOR TO DISCONNECTING THE EXISTING SERVICE. INCLUDE A 5' STUB OF 2" CONDUIT FROM THE GM FOR FUTURE CONNECTION. THE COST OF THE 5' STUB, 2" UNDERGROUND CONDUIT AND SPLICE TO EXISTING SERVICE CONDUIT SHALL BE INCLUDED IN THE COST OF CONCRETE FOUNDATION, TYPE A. THE TRAFFIC SIGNALS SHALL REMAIN OPERATIONAL THE ENTIRE TIME THE SWITCH OVER BETWEEN EXISTING SERVICE AND PROPOSED SERVICE IS MADE.

THE FOLLOWING ITEMS SHALL BE REMOVED BY THE CONTRACTOR AND SHALL BE DISPOSED OF BY THEM OUTSIDE THE RIGHT-OF-WAY AT THEIR EXPENSE. THE SALVAGE VALUE OF THE REMOVED EQUIPMENT SHALL BE REFLECTED IN THE CONTRACT BID PRICE.

THE FOLLOWING EXISTING TRAFFIC SIGNAL EQUIPMENT SHALL BE REMOVED BY THE CONTRACTOR AND SHALL BE RELOCATED TO THE PROPOSED TRAFFIC SIGNAL EQUIPMENT INDICATED IN THE PLAN.

1	EACH	3-SECTION SIGNAL HEAD
1	EACH	5-SECTION SIGNAL HEAD
1	EACH	PEDESTRIAN SIGNAL HEAD
1	EACH	LIGHT DETECTOR AMPLIFIER



0 20 40 60
SCALE IN FEET

1 REVISÉD SHEET 9/9/2025

F.A.U. RTE.	SECTION	COUNTY	TOTAL SHEETS	SHEET NO.
XXX	2024-964-TS	COOK	89	71
		CONTRACT NO. 62W89		
		ILLINOIS	FED. AID PROJECT	