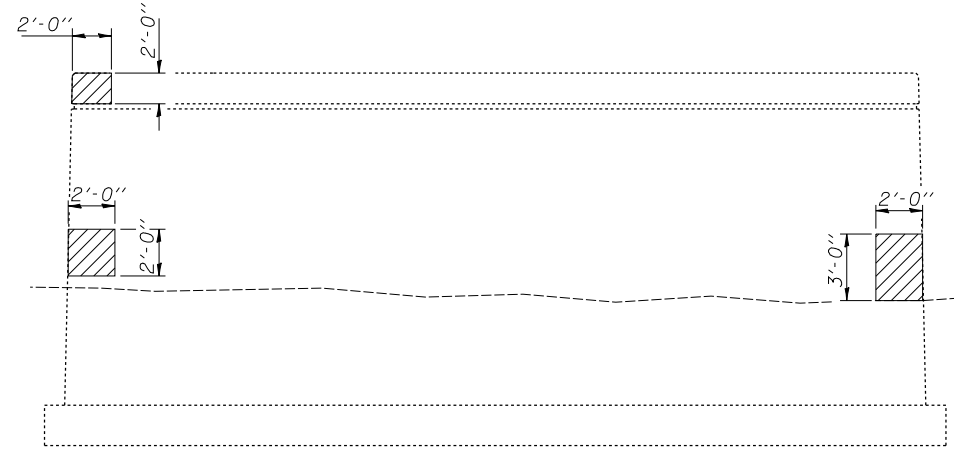


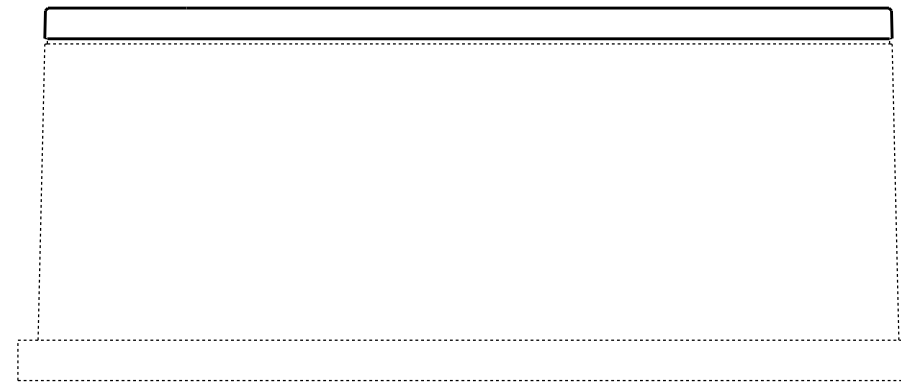
STATE OF ILLINOIS  
DEPARTMENT OF TRANSPORTATION

ROUTE NO.	SECTION	COUNTY	TOTAL SHEETS	SHEET NO.	SHEET NO. 19 23 SHEETS
FAI 74	(57-22) BR-2	McLEAN	42	30	
FED. ROAD DIST. NO. 7	ILLINOIS	FED. AID PROJECT			

Contract No. 70671



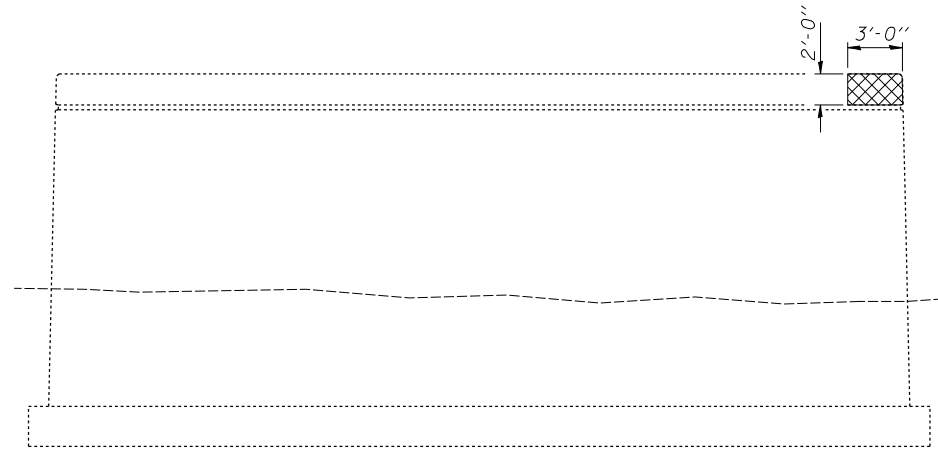
**ELEVATION - PIER 1**  
(East face)



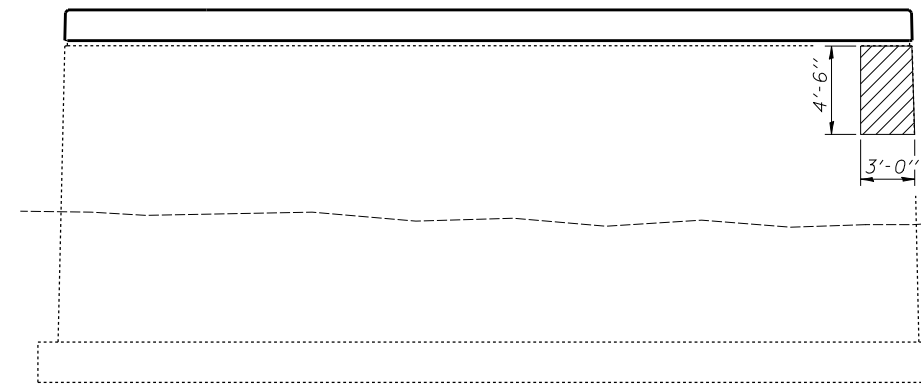
**ELEVATION - PIER 2**  
(East face)

**CONCRETE REPAIR LEGEND**

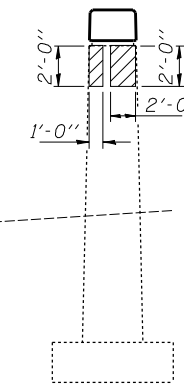
- Delamination
- Spall
- Slopewall Removal & Replacement



**ELEVATION - PIER 1**  
(West face)

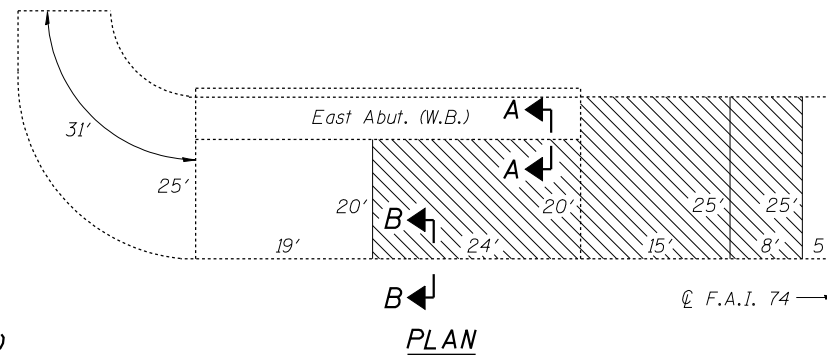


**ELEVATION - PIER 2**  
(West face)

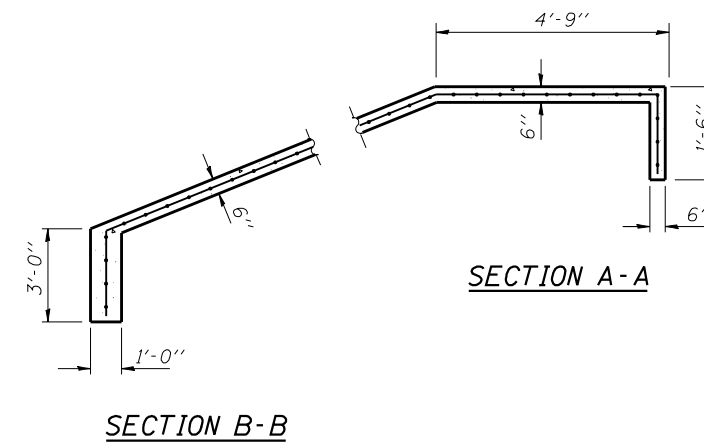


**END VIEW**  
(South end)

Notes: . Slopewall shall be reinforced with welded wire fabric, 6" x 6" - W4.0 x W4.0, weighing 58 lbs. per 100 sq. ft.



**PLAN**



**SECTION A-A**

**SECTION B-B**

**BILL OF MATERIAL**

Item	Unit	Total
Structural Repair of Concrete (Depth ≤ 5")	Sq. Ft.	40
Slopewall Removal	Sq. Yd.	120
Slopewall 6"	Sq. Yd.	120

DESIGNED	DHC
CHECKED	CCC
DRAWN	h.t. duong
CHECKED	DHC/CCC

Aug. 2, 2007  
EXAMINED *Thomas J. Domagala*  
ENGINEER OF BRIDGE DESIGN  
PASSED *Ralph E. Anderson*  
ENGINEER OF BRIDGES AND STRUCTURES

**CONCRETE REPAIRS**  
F.A.I. RT. 74 - SEC. (57-22)BR-2  
McLEAN COUNTY  
STATION 1039+00  
STRUCTURE NO. 057-0126 (W.B.)