

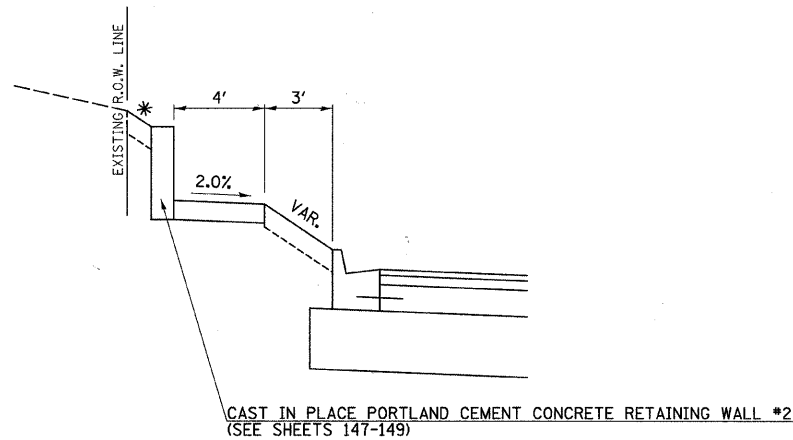
PROPOSED SUPERELEVATED TYPICAL SECTION
C.H. 35 (55TH ST.)

STA. 34+47.75 TO STA. 38+38.66

* 3:1 & VARIES (SEE CROSS SECTIONS).

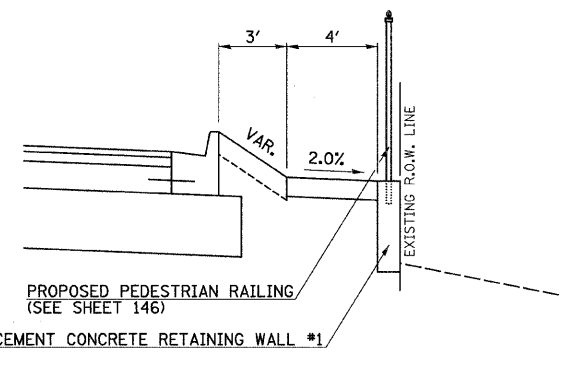
SUPERELEVATION TRANSITION CHART						
LANE #	STA	SIDE	TO	STA	SIDE	CROSS SLOPE
1, 2 & 3	34+47.75	LT.	TO	35+69.75	LT.	TRANSITION FROM -2.0% TO +2.0%
1, 2 & 3	35+69.75	LT.	TO	37+16.66	LT.	FULL SUPERELEVATION +2.0%
1, 2 & 3	37+16.66	LT.	TO	38+88.66	LT.	TRANSITION FROM +2.0% TO -2.0%

NOTE: RIGHT SIDE STAYS AT NORMAL CROWN.



DETAIL A

STA. 37+05.48 TO STA. 38+10.00 (LT.)



DETAIL B

STA. 35+07.86 TO STA. 36+05.16 (RT.)

NOTE:
SEE PLAN & PROFILES FOR SIDEWALK WIDTH.

MILLING & RESURFACING CONSISTS OF THE FOLLOWING:
 EXISTING HOT-MIX ASPHALT SURFACE REMOVAL, 3 3/4"
 PROPOSED HOT-MIX ASPHALT SURFACE COURSE, MIX "D", N70, 1 1/2"
 PROPOSED HOT-MIX ASPHALT BINDER COURSE, IL-19.0, N70, 2 1/4"

FILE NAME = V:\2791\2791\004.dgn	USER NAME = shughes	DESIGNED -	REVISED -	STATE OF ILLINOIS DEPARTMENT OF TRANSPORTATION	C.H. 35 (55TH ST.), PROPOSED TYPICAL SECTION			F.A.U. RTE.	SECTION	COUNTY	TOTAL SHEETS	SHEET NO.
PLOT SCALE = 4,000' / IN.	CHECKED -	REVISED -	1504					94-00302-00-FP	DU PAGE	240	12	
PLOT DATE = 5/25/2011	DATE -	REVISED -	SCALE: N/A			SHEET NO. 4 OF 9 SHEETS	STA. N/A	TO STA. N/A	CONTRACT NO. 63609			
ILLINOIS FED. AID PROJECT												