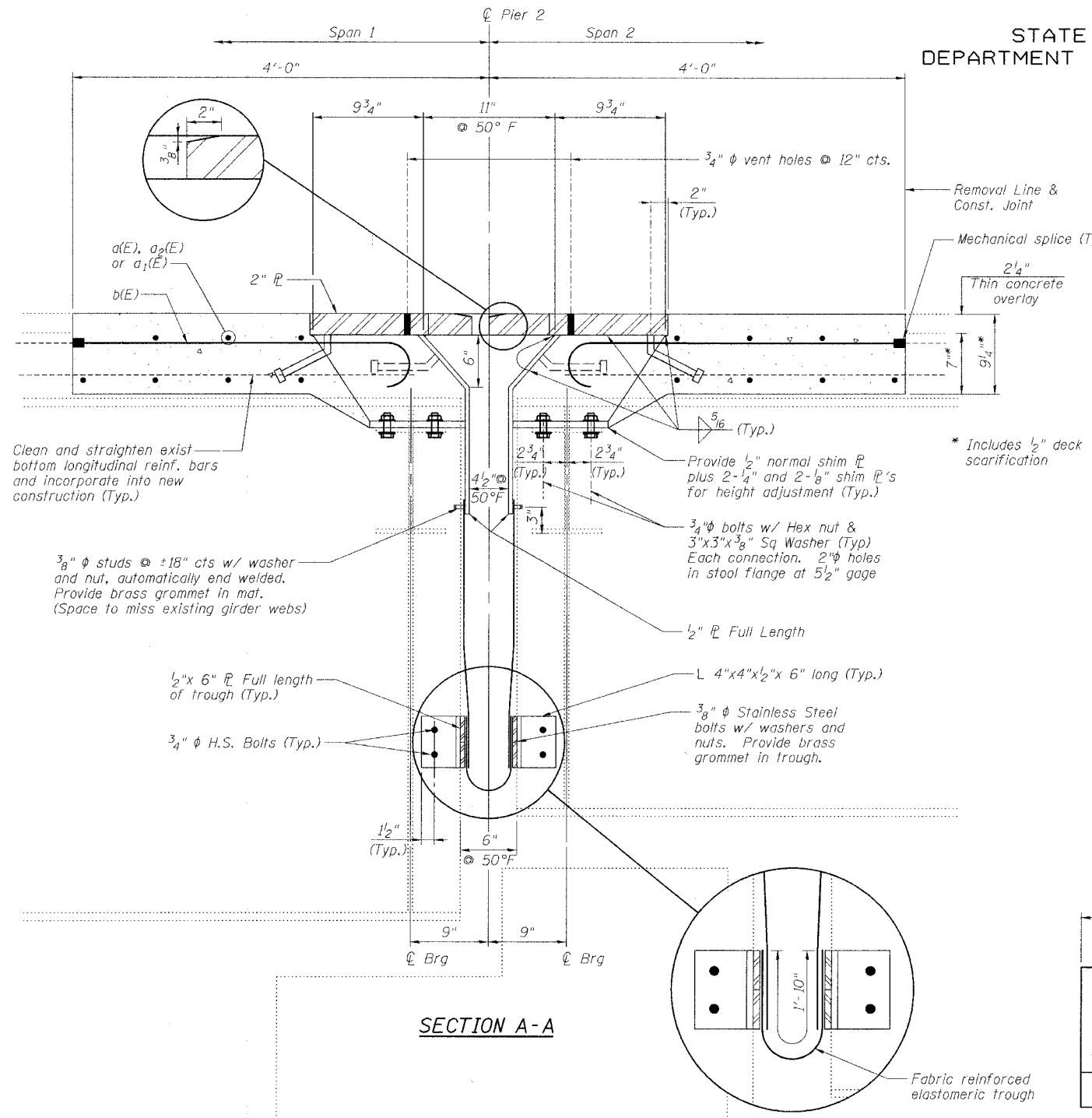


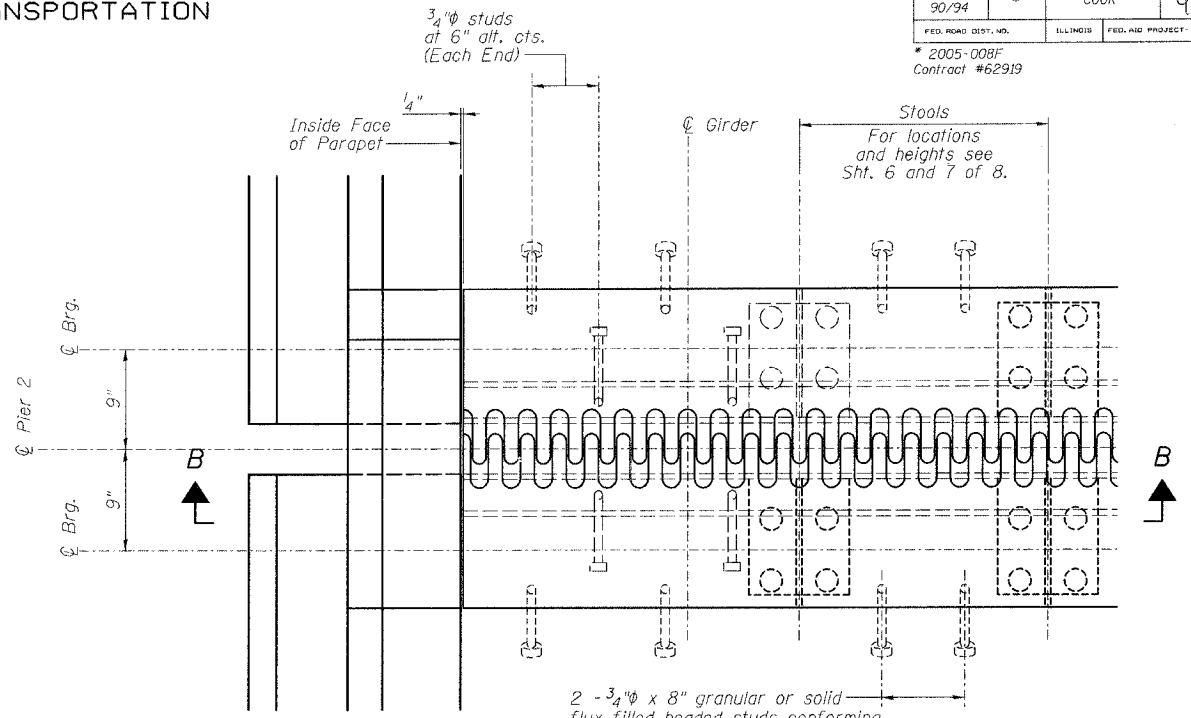
STATE OF ILLINOIS
DEPARTMENT OF TRANSPORTATION

ROUTE NO.	SECTION	COUNTY	SHEET NO.	SHEET NO.
FA1 90/94	#	COOK	93	43
FED. ROAD DIST. NO. ILLINOIS FED. AID PROJECT				
* 2005-008F Contract #62919				

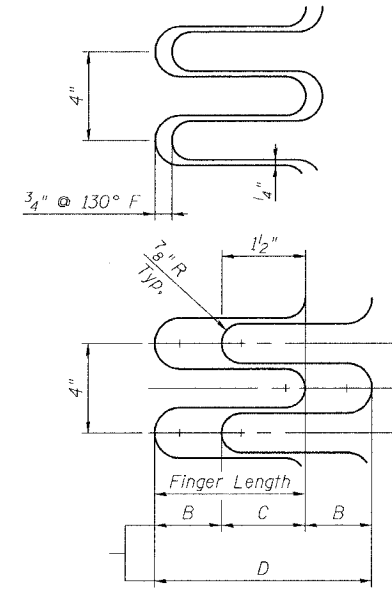
8 SHEETS



SECTION A-A

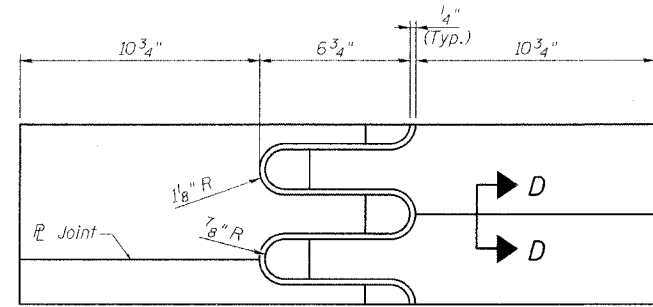


PLAN



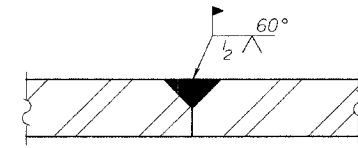
FINGER DETAIL

Finger Length = 6 3/4"
Weld Length = 9 3/4"
Weld Size = 5/16"
Expansion Length = 359.4'



FLAME CUTTING DIAGRAM

(Proposed Finger PL - Cut from 2" x 2'-4 1/2" PL)



SECTION D-D

NOTES

1. Stainless steel bolts, washers and nuts shall meet the requirements of ASTM A193.
2. The furnishing of all necessary hardware, stainless steel bolts, studs and washers, plates and angles shall be included with "Furnishing Structural Steel".
3. For Section B-B, see Sheet 5 of 8.

REVISIONS	
NAME	DATE

ILLINOIS DEPARTMENT OF TRANSPORTATION
PIER 2 JOINT DETAILS

F.A.I. ROUTE 90/94 NORTHBOUND (DAN RYAN EXPRESSWAY)
16TH STREET TO 18TH STREET
COOK COUNTY
S.N. 016-1111 - PIER 2

SCALE: VERT. HORIZ.
DATE: 3/28/05

DRAWN BY: LANDREY
DESIGNED BY: SANFORD
CHECKED BY:

GREENE & BRADFORD, INC.
OF SPRINGFIELD
CONSULTING ENGINEERS
PROFESSIONAL ENGINEERS
PROFESSIONAL DESIGNERS
ILLINOIS LICENSE NO. 04286-W05-NB-FPJ
PROFESSIONAL SEAL NO. 04286-W05-NB-FPJ
ISSUED 03/28/05, EXPIRES 03/28/10

COMPUTER FILE NO.
04286-W05-NB-FPJ
PROJECT 04286-W05
6/15/05-MML

FILE NAME = \$FILES\$
PLOT DATE = 6/17/2005
PLOT TIME = 11:56:47 AM
OPERATOR = michellel