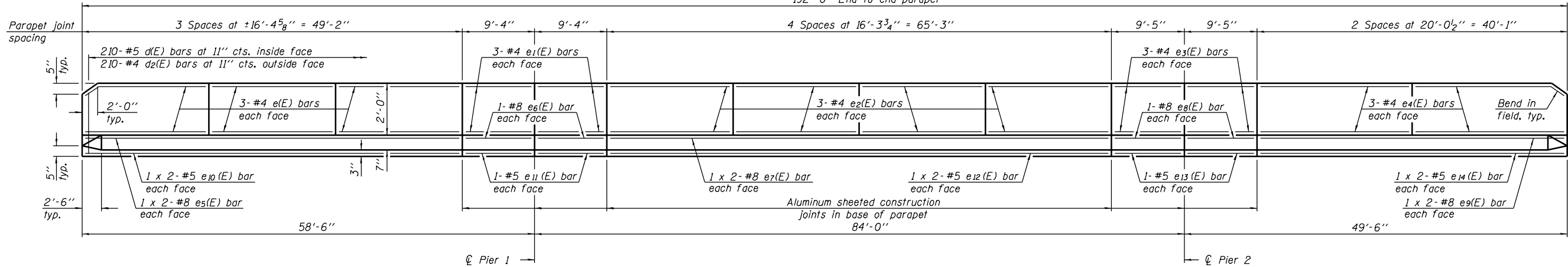
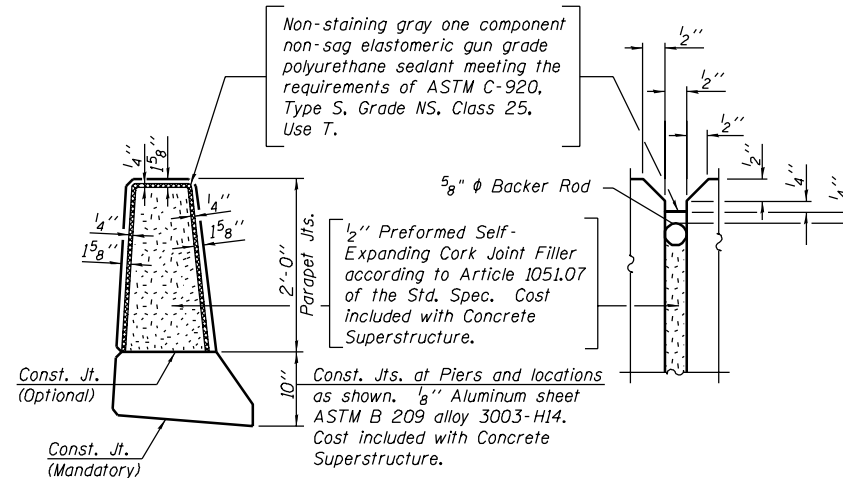
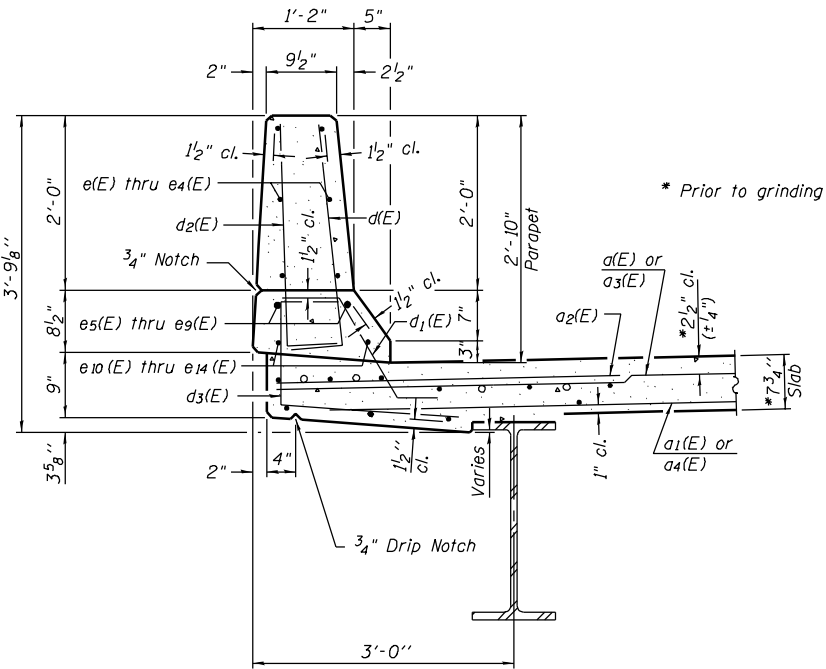


Contract #70258
‡ 22VBR-1 and 144SBR-2

192'-0" End-to-end parapet



INSIDE ELEVATION OF PARAPET
(West parapet shown, East parapet similar)



PARAPET JOINT DETAILS

**SUPERSTRUCTURE
BILL OF MATERIAL**

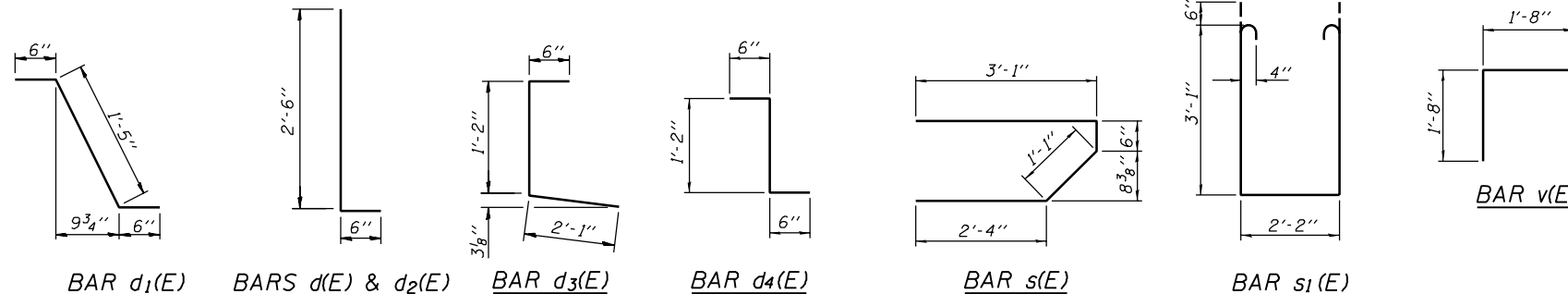
Bar	No.	Size	Length	Shape
a(E)	271	#5	34'-7"	—
a1(E)	231	#5	32'-10"	—
a2(E)	272	#6	4'-6"	—
a3(E)	2	#5	35'-4"	—
a4(E)	2	#5	33'-7"	—
b(E)	266	#5	29'-3"	—
b1(E)	70	#6	21'-4"	—
b2(E)	248	#5	25'-11"	—
b3(E)	70	#6	19'-10"	—
d(E)	420	#5	3'-0"	┌
d1(E)	408	#5	2'-5"	┌
d2(E)	420	#4	3'-0"	┌
d3(E)	420	#4	3'-9"	┌
d4(E)	12	#5	2'-2"	┌
e(E)	36	#4	16'-0"	—
e1(E)	24	#4	9'-0"	—
e2(E)	48	#4	15'-11"	—
e3(E)	24	#4	9'-1"	—
e4(E)	24	#4	19'-8"	—
e5(E)	8	#8	26'-2"	—
e6(E)	8	#8	9'-0"	—
e7(E)	8	#8	34'-2"	—
m(E)	4	#6	33'-9"	—
m1(E)	6	#6	35'-7"	—
m2(E)	16	#6	8'-9"	—
m3(E)	8	#6	7'-3"	—
m4(E)	10	#6	5'-8"	—
m5(E)	4	#6	2'-9"	—
s(E)	72	#5	7'-0"	┌
s1(E)	62	#4	9'-4"	┌
v(E)	68	#5	3'-4"	┌
Reinforcement Bars, Epoxy Coated		Pound	49600	
Concrete Superstructure		Cu. Yds.	232.3	

Bar	No.	Size	Length	Shape
ea(E)	8	#8	9'-1"	—
ea1(E)	8	#8	21'-7"	—
ea2(E)	8	#5	25'-3"	—
ea3(E)	8	#5	9'-0"	—
ea4(E)	8	#5	33'-4"	—
ea5(E)	8	#5	9'-1"	—
ea6(E)	8	#5	20'-9"	—
m(E)	4	#6	33'-9"	—
m1(E)	6	#6	35'-7"	—
m2(E)	16	#6	8'-9"	—
m3(E)	8	#6	7'-3"	—
m4(E)	10	#6	5'-8"	—
m5(E)	4	#6	2'-9"	—
s(E)	72	#5	7'-0"	┌
s1(E)	62	#4	9'-4"	┌
v(E)	68	#5	3'-4"	┌
Reinforcement Bars, Epoxy Coated		Pound	49600	
Concrete Superstructure		Cu. Yds.	232.3	

Reinforcement bars designated (E) shall be epoxy coated.
Bars indicated thus 1 x 2-#5 etc. indicates 1 line of bars with 2 lengths per line.

MINIMUM BAR LAP
(Parapet)

#5 bar = 1'-8"
#8 bar = 3'-5"



BAR v(E)

DESIGNED	Curt M. Evoy
CHECKED	Rebecca L. Tharp
DRAWN	Michael B. Mossman
CHECKED	C.M.E. / R.L.T.

EXAMINED	August 4, 2006
PASSED	Thomas J. Domagala ENGINEER OF BRIDGE DESIGN
	Ralph E. Anderson ENGINEER OF BRIDGES AND STRUCTURES

SUPERSTRUCTURE DETAILS
F.A.S. RT. 1671 - SEC. 22VBR-1
DOUGLAS COUNTY
STATION 1154+99.02
STRUCTURE NO. 021-0060