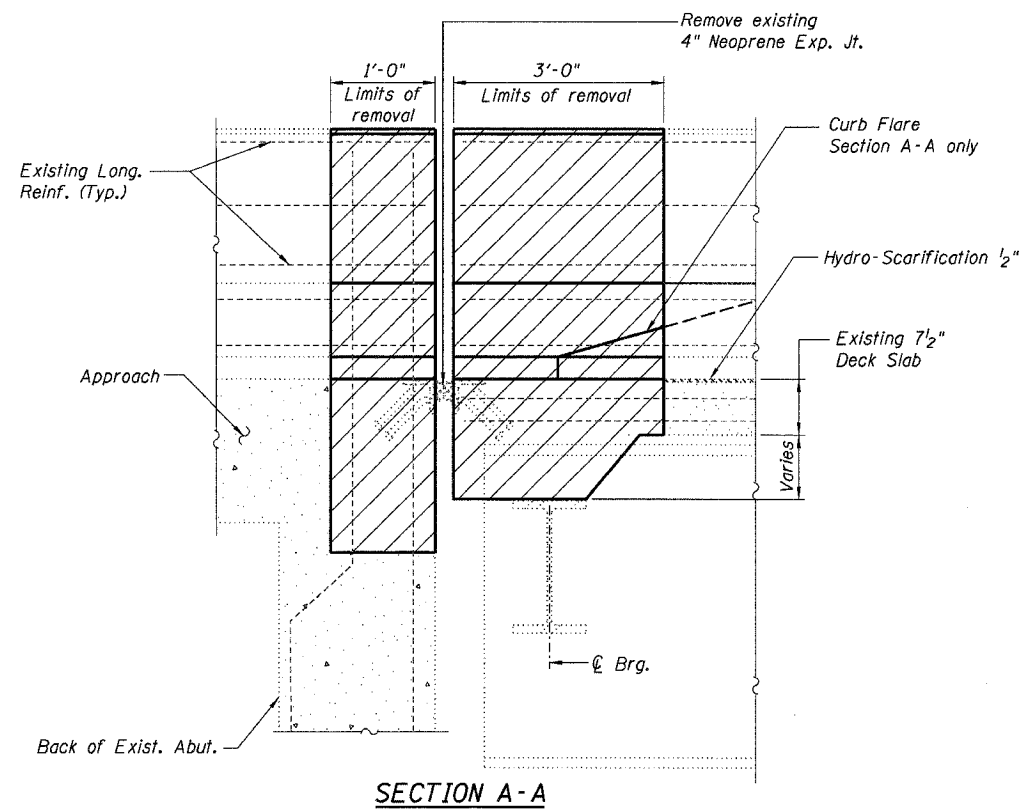


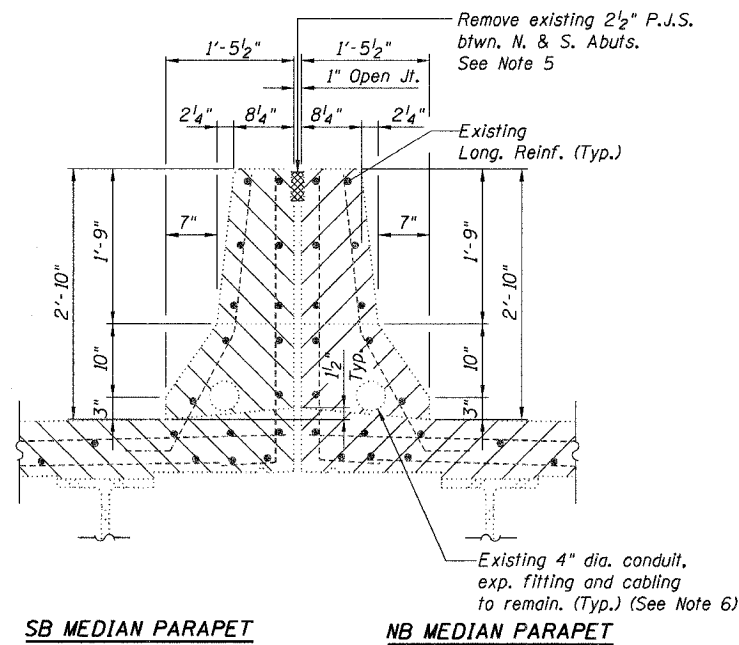
STATE OF ILLINOIS
DEPARTMENT OF TRANSPORTATION

ROUTE NO.	SECTION	COUNTY	TOTAL SHEETS	SHEET
F.A.I. 94	2006-043 RS	COOK	135	104
FED. ROAD DIST. NO. 7	ILL. IND. PROJ. NO.	FED. AID PROJECT NO.		

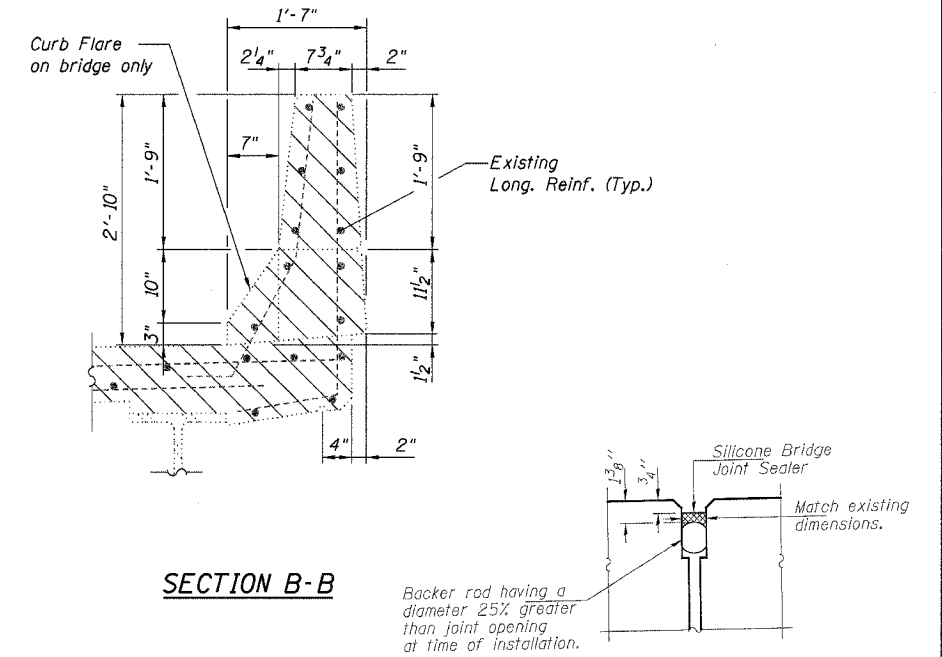
Contract # 62747



SECTION A-A

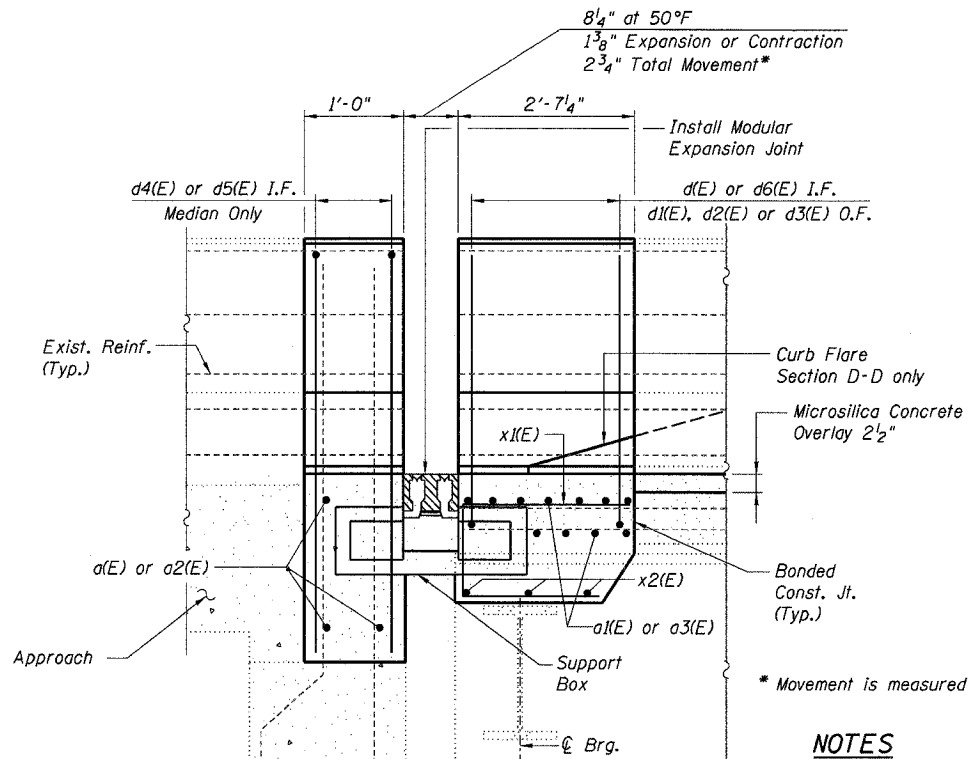


SECTION C-C



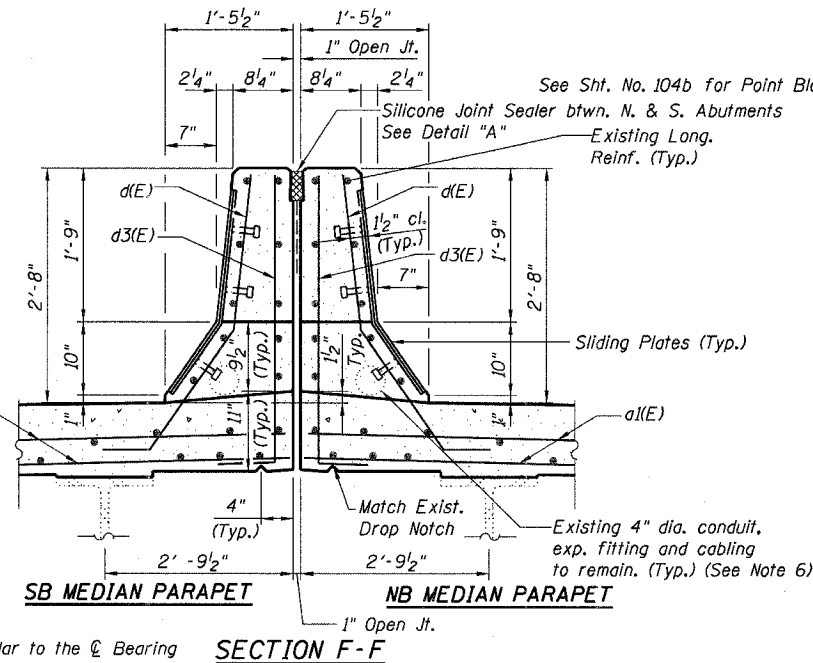
SECTION B-B

DETAIL "A"

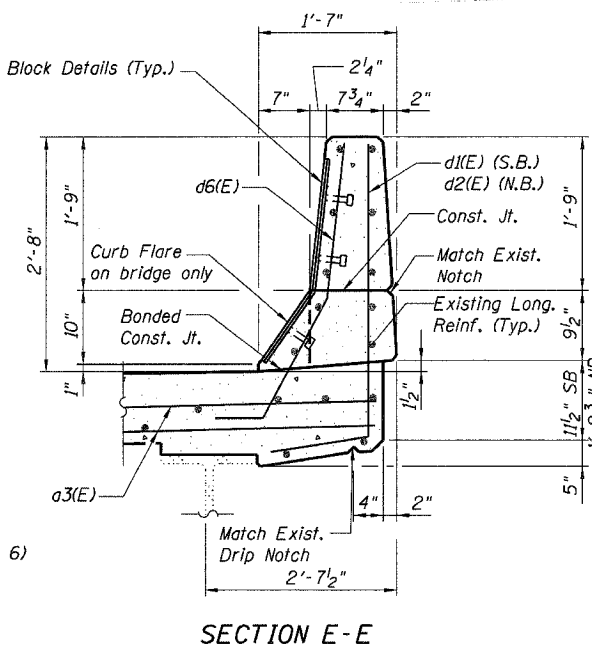


SECTION D-D

(Point Block Details Not Shown for Clarity)



SECTION F-F



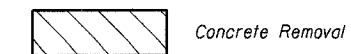
SECTION E-E

* Movement is measured perpendicular to the ϕ Bearing

NOTES

- Existing Reinforcement Bars shown are to be cleaned and incorporated into new construction.
- I.F. denotes Inside Face. O.F. denotes Outside Face.
- Work required for removal of existing expansion joint shall be included in the cost of Concrete Removal.
- Work this sheet with Sheet No. 101.
- Work required for removal of existing P.J.S. shall be included in the cost of Silicone Bridge Joint Sealer, 2".
- The Contractor shall exercise extreme care with the existing conduits in sections of the parapet to be removed and to protect and support the conduit. The Contractor will be required to repair any damage done to the conduit to the satisfaction of the engineer. No splicing will be allowed to any cable damage resulting from this work; instead the Contractor will be required to replace the entire span of any damaged cable.
- The Contractor must verify all existing dimensions.

LEGEND



Concrete Removal

SOUTH EXPANSION JOINT REMOVAL & REPLACEMENT DETAILS
F.A.I. 94/ (EDENS EXPRESSWAY)
OVER U.P.R.R.
COOK COUNTY
STATION 277+05.05
STRUCTURE NO. 016-0103 & 016-0104

DESIGNED	JSD
CHECKED	AMK
DRAWN	JSD
CHECKED	AMK

LOCHNER
H.W. LOCHNER, INC., CHICAGO, ILLINOIS

I:\2298\struct\dgn\0103EXP03.dgn