

STATE OF ILLINOIS
DEPARTMENT OF TRANSPORTATION
DIVISION OF HIGHWAYS

**PROPOSED
HIGHWAY PLANS**

FAP ROUTE 331 (ILLINOIS 13)
SECTION (1-4)R-2, N-4, TS-4
PROJECT NHPP-0331(066)
IL 13 ADDITIONAL LANE
WILLIAMSON COUNTY

C-99-046-11

F.A.P. RTE.	SECTION	COUNTY	TOTAL SHEETS	SHEET NO.
331	(1-4)R-2, N-4, TS-4	WILLIAMSON	381	1

ILLINOIS CONTRACT NO. 78258
* 381 + 3 = 384

D-99-035-11



FOR INDEX OF SHEETS, SEE SHEET NO. 3
FOR SUMMARY OF QUANTITIES SEE SHEETS NO. 6-21

TRAFFIC DATA

W PLAZA DR TO DIVISION ST
2006 ADT = 26,700 WITH 7% TRUCKS
2016 ADT = 33,200 WITH 7% TRUCKS

DIVISION ST TO IL 148
2006 ADT = 27,300 WITH 7% TRUCKS
2016 ADT = 33,940 WITH 7% TRUCKS

TOWNSHIPS:

WEST MARION & CARTERVILLE

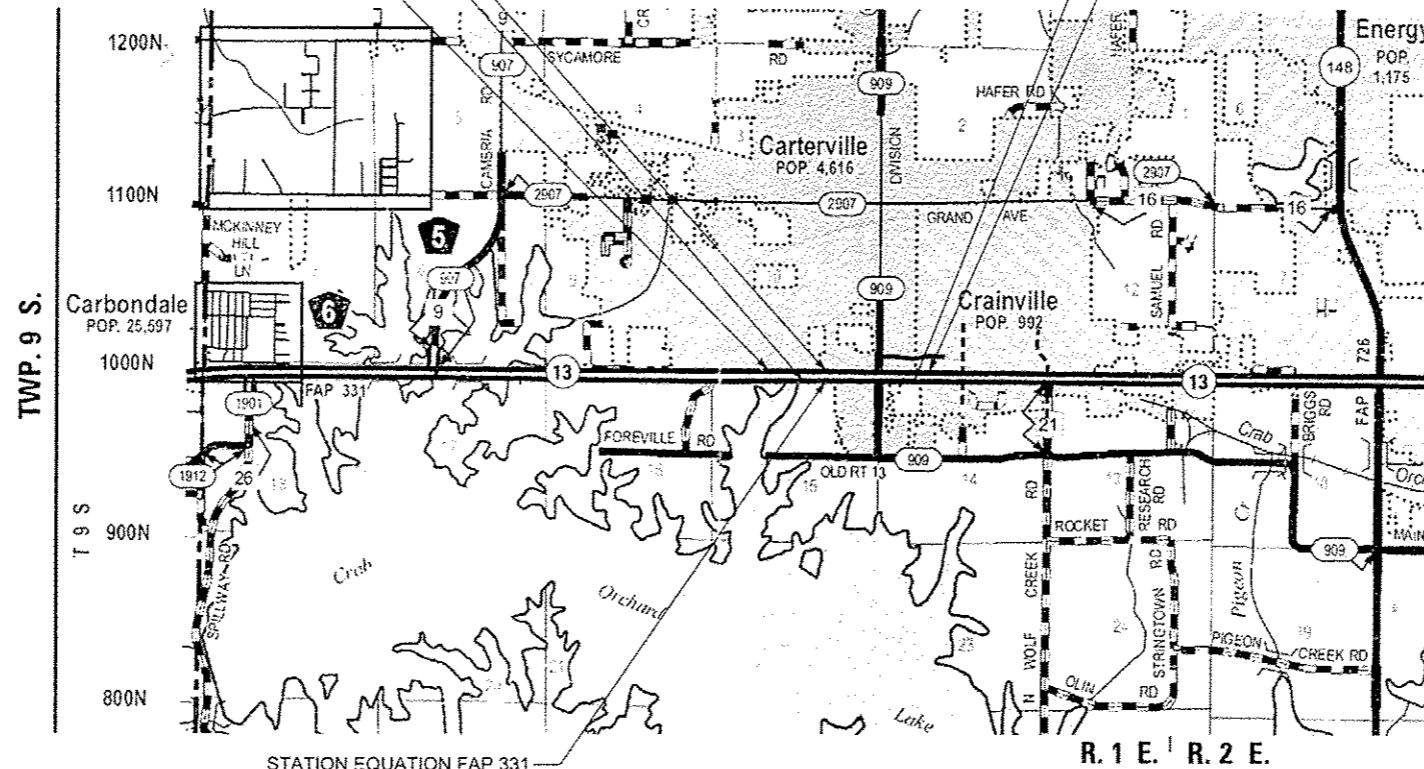
STATION EQUATION FAP 331
WB STA 445+97.70 BK=
WB STA 446+00.00 AH

EAST BOUND
IMPROVEMENT BEGINS
STA 443+90.96

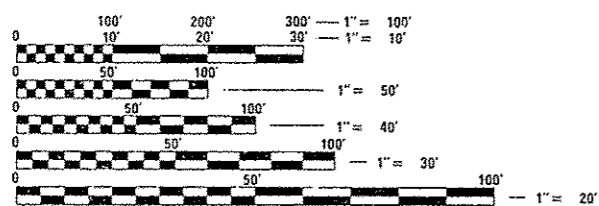
WEST BOUND
PROJECT BEGINS
STA 441+02.20

EAST BOUND
IMPROVEMENT ENDS
STA 479+50.00

WEST BOUND
PROJECT ENDS
STA 480+37.10



STATION EQUATION FAP 331
EB STA 445+98.33 BK=
EB STA 446+00.00 AH



FULL SIZE PLANS HAVE BEEN PREPARED USING STANDARD ENGINEERING SCALES. REDUCED SIZED PLANS WILL NOT CONFORM TO STANDARD SCALES. IN MAKING MEASUREMENTS ON REDUCED PLANS, THE ABOVE SCALES MAY BE USED.

J.U.L.I.E.
JOINT UTILITY LOCATION INFORMATION FOR EXCAVATION
1-800-892-0123
OR 811

PROJECT ENGINEER: MELISSA COLE (618) 351-5216
PROJECT MANAGER: CHARLES STEIN (618) 351-5210

CONTRACT NO. 78258



SCALE: 1" = 1 MILE
GROSS /NET LENGTH = 3556.74 FT. = 0.674 MILE (IL 13 EB CONSTRUCTION)

STRUCTURAL ENGINEER
DAVID T. DELONG
081-007208
1/21/2013
Exp: 11/30/2014
THIS SEAL APPLIES TO SHEETS: 251-254

PROFESSIONAL ENGINEER
KEVIN S. NICHOLS
082-056944
2/1/13
license expires 11-30-13
THIS SEAL APPLIES TO SHEETS:
1-198, 205-250, 255-261, 269-381

PLANS PREPARED BY:



STATE OF ILLINOIS
DEPARTMENT OF TRANSPORTATION
DIVISION OF HIGHWAYS

SUBMITTED March 13, 2013
Jeffrey Z. Fenn
DEPUTY DIRECTOR OF HIGHWAYS, REGION ENGINEER

May 10, 2013
John D. Baranzelli, P.E.
ENGINEER OF DESIGN AND ENVIRONMENT

May 10, 2013
Omer Osman, P.E.
DIRECTOR OF HIGHWAYS, CHIEF ENGINEER

PRINTED BY THE AUTHORITY
OF THE STATE OF ILLINOIS