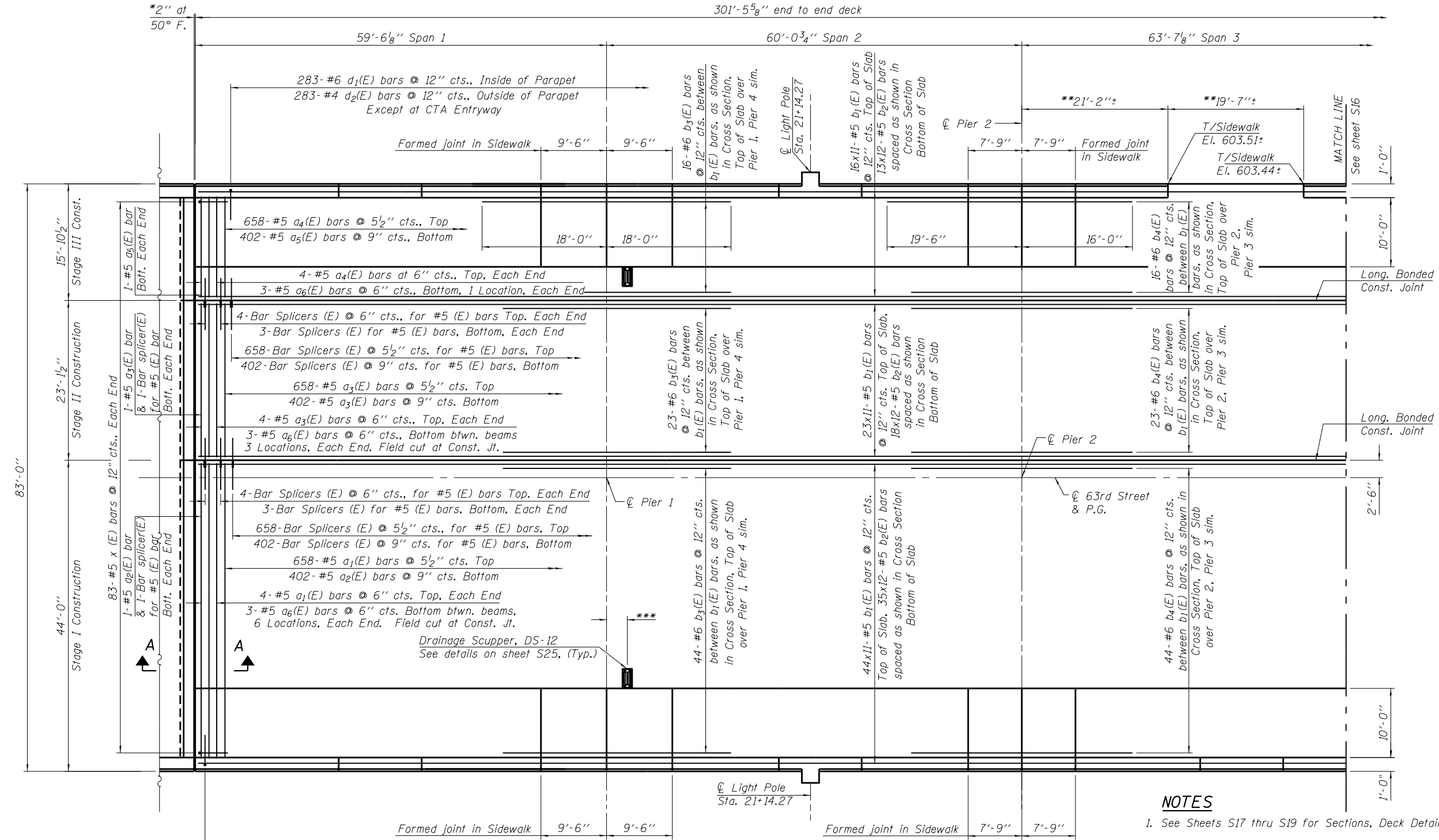


H:\projects\2015\20150223\CAD\Structure\al\dgn\06-1149_Final\00\160105-15-deck-pli.dgn
 5/20/2015 10:24:03 AM



PARTIAL PLAN



MINIMUM BAR LAP
 #5 bar = 3'-3"

NOTES

- See Sheets S17 thru S19 for Sections, Deck Details, Parapet Reinforcement and Bill of Material.
- Cut Longitudinal Reinforcement to clear Drainage Scuppers.
- *Expansion Joint dimensions are based on Rolled Rail Joint. If the Contractor elects to use the Welded Rail Joint, deck dimensions may require adjustments to satisfy the details on Sheet S24.
- **Parapet cut-out to match CTA Entryway. Back of sidewalk elevations to match existing edge of CTA entryway platform elevations. The Contractor shall remove and reinstall the expansion joint and cover plate at the CTA Station (including any embedded frames and seals if applicable). If the existing expansion joint material cannot be removed without being damaged, the expansion joint shall be replaced with a similar expansion joint approved by the Engineer. This cost shall be included in Concrete Superstructure.
- ***Scupper locations shall be determined by the Drainage System pipe supports at the piers. See Sheet S-48.
- Bar indicated thus 44x11-#5 etc. indicates 44 lines of bars with 11 lengths per line.

USER NAME =	DESIGNED - J.Z.	REVISED -
	CHECKED - J.A.Z.	REVISED -
PLOT SCALE =	DRAWN - E.E.J.	REVISED -
PLOT DATE	DATE - 5/17/2013	REVISED -

F.A.I. RTE.	SECTION	COUNTY	TOTAL SHEETS	SHEET NO.
94	1920-B	COOK	137	74
CONTRACT NO. 60J15				
ILLINOIS FED. AID PROJECT				