

| F.A.I. RTE. | SECTION | COUNTY | TOTAL SHEETS | SHEET NO. |
|-------------|-----------------------|----------|--------------|-----------|
| 70 | (26-5,26-5-1,25-1-1)R | ILLINOIS | 92 | 1 |

• EFFINGHAM & FAYETTE

D-97-052-10

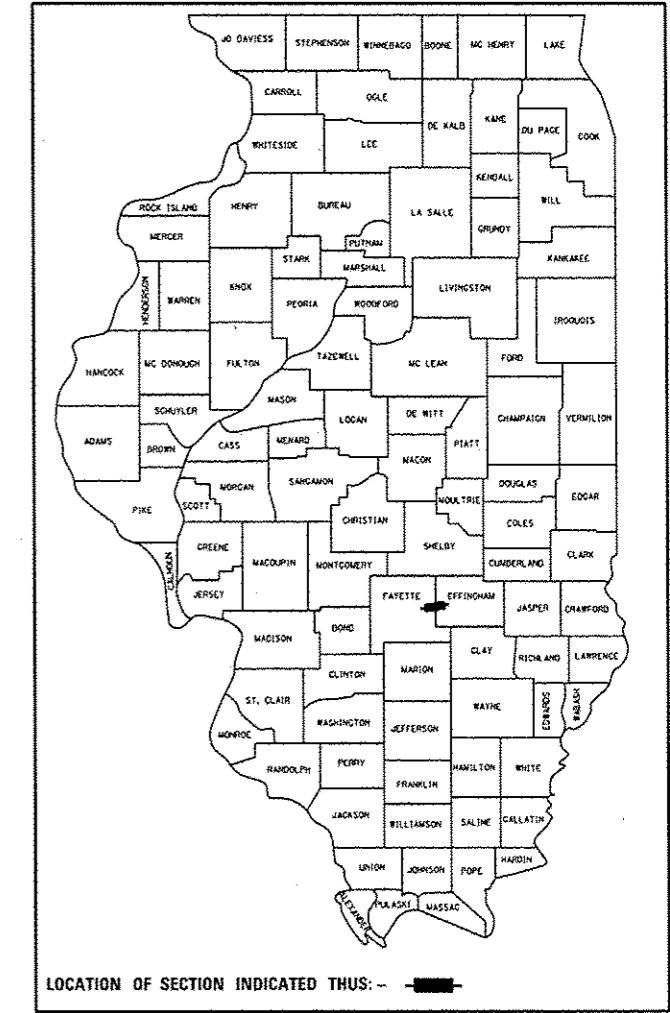
STATE OF ILLINOIS
DEPARTMENT OF TRANSPORTATION
DIVISION OF HIGHWAYS

**PROPOSED
HIGHWAY PLANS**

F.A.I. ROUTE 70 (I-70)
SECTION (26-5,26-5-1,25-1-1)R

**RUBBLIZATION-OVERLAY
EFFINGHAM & FAYETTE COUNTIES**

C-97-111-10



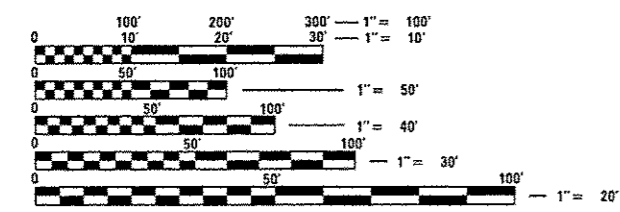
FOR INDEX OF SHEETS, SEE SHEET NO. 2

STATION EQUATION:
STA. 1418 + 38.64 (BK) = STA. 1418 + 38.81 (AH)
STA. 1462 + 63.50 (BK) = STA. 1521 + 78.59 (AH)

BRIDGE OMISSION:
EB STA. 1170 + 70 TO STA. 1173 + 20
WB STA. 1171 + 05 TO STA. 1173 + 50

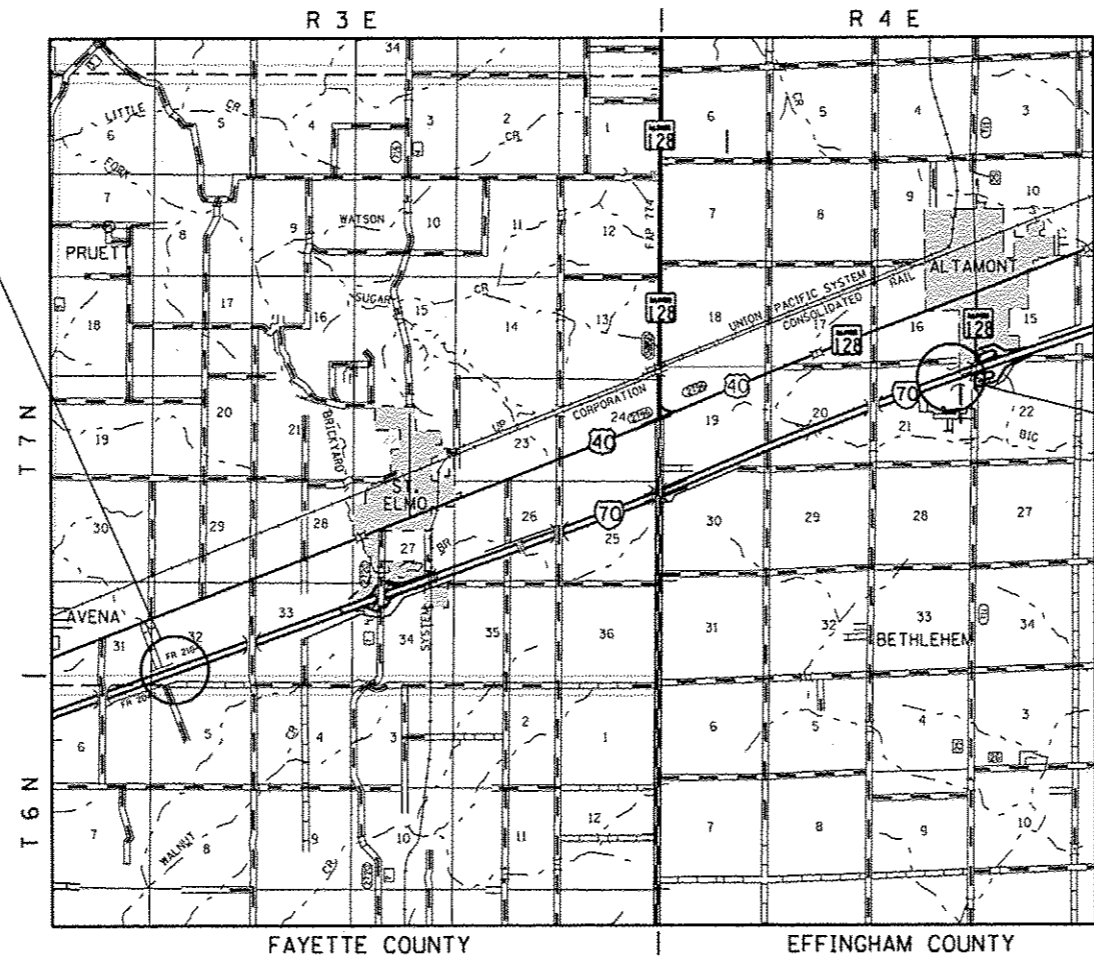
ADT = 20,800 (2010)

FAI ROUTE 70
SECTION (26-5,26-5-1,25-1-1)R
BEGINS STATION 1043 + 44
FAYETTE COUNTY



FULL SIZE PLANS HAVE BEEN PREPARED USING STANDARD ENGINEERING SCALES. REDUCED SIZED PLANS WILL NOT CONFORM TO STANDARD SCALES. IN MAKING MEASUREMENTS ON REDUCED PLANS, THE ABOVE SCALES MAY BE USED.

J.U.L.I.E.
JOINT UTILITY LOCATION INFORMATION FOR EXCAVATION
1-800-892-0123
OR 811



FAI ROUTE 70
SECTION (26-5,26-5-1,25-1-1)R
ENDS STATION 1524 + 03
EFFINGHAM COUNTY

PROJECT ENGINEER: TOM RONAN
PROJECT MANAGER: JENNIFER SHULL
PHONE: (217)-342-8361
CONTRACT NO. 74469

GROSS LENGTH = 42,160.70 FT. = 7.98 MILES
NET LENGTH = 41,915.70 FT. = 7.94 MILES

STATE OF ILLINOIS
DEPARTMENT OF TRANSPORTATION
DIVISION OF HIGHWAYS

SUBMITTED JUNE 5 20 14
Roger L. Driskell 1600
DEPUTY DIRECTOR OF HIGHWAYS, REGION ENGINEER

June 27 20 14
John D. Baranzoli PE
ENGINEER OF DESIGN AND ENVIRONMENT

June 27 20 14
Omer Osman PE
DIRECTOR OF HIGHWAYS, CHIEF ENGINEER

**PRINTED BY THE AUTHORITY
OF THE STATE OF ILLINOIS**