

SCHEDULE OF QUANTITIES

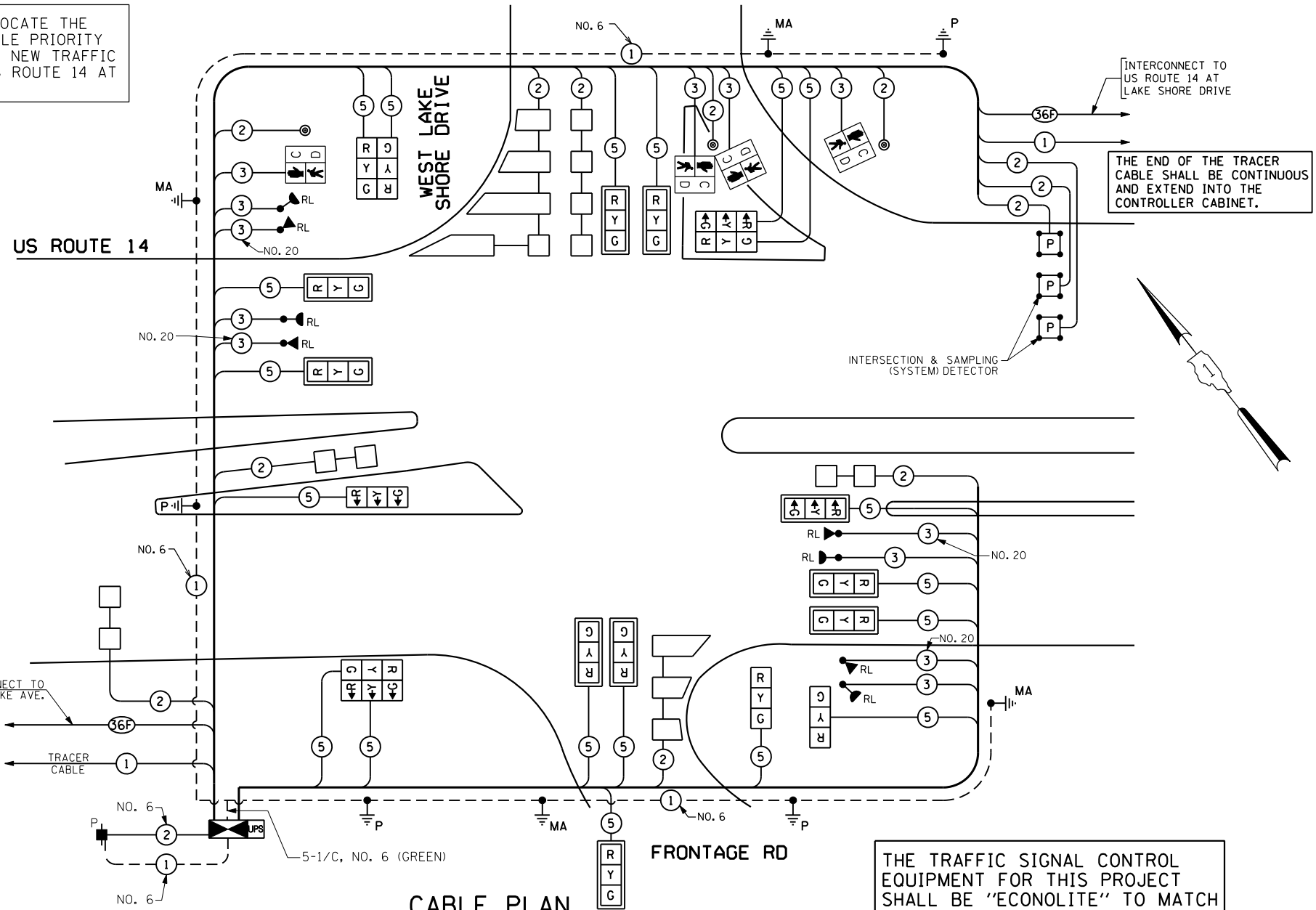
QUANTITY	UNIT	ITEM
45	SO FT	SIGN PANEL - TYPE 1
40	SO FT	SIGN PANEL - TYPE 2
1	EACH	SERVICE INSTALLATION - POLE MOUNTED
727	FOOT	UNDERGROUND CONDUIT, GALVANIZED STEEL, 2" DIA.
134	FOOT	UNDERGROUND CONDUIT, GALVANIZED STEEL, 2 1/2" DIA.
144	FOOT	UNDERGROUND CONDUIT, GALVANIZED STEEL, 3" DIA.
608	FOOT	UNDERGROUND CONDUIT, GALVANIZED STEEL, 4" DIA.
3	EACH	HANDHOLE
4	EACH	HEAVY-DUTY HANDHOLE
2	EACH	DOUBLE HANDHOLE
1	EACH	TRANSCEIVER-FIBER OPTIC
1021	FOOT	ELECTRIC CABLE IN CONDUIT, SIGNAL NO. 14 2C
2422	FOOT	ELECTRIC CABLE IN CONDUIT, SIGNAL NO. 14 3C
4438	FOOT	ELECTRIC CABLE IN CONDUIT, SIGNAL NO. 14 5C
2904	FOOT	ELECTRIC CABLE IN CONDUIT, LEAD-IN, NO. 14 1 PAIR
72	FOOT	ELECTRIC CABLE IN CONDUIT, SERVICE, NO. 6 2C
1000	FOOT	ELECTRIC CABLE IN CONDUIT, EQUIPMENT GROUNDING CONDUCTOR, NO. 6 1C
1	EACH	TRAFFIC SIGNAL POST, GALVANIZED STEEL 10 FT.
3	EACH	TRAFFIC SIGNAL POST, GALVANIZED STEEL 14 FT.
1	EACH	STEEL MAST ARM ASSEMBLY AND POLE, 24 FT.
1	EACH	STEEL MAST ARM ASSEMBLY AND POLE, 34 FT.
1	EACH	STEEL MAST ARM ASSEMBLY AND POLE, 42 FT.
1	EACH	STEEL MAST ARM ASSEMBLY AND POLE, 56 FT.
16	FOOT	CONCRETE FOUNDATION, TYPE A
4	FOOT	CONCRETE FOUNDATION, TYPE C
10	FOOT	CONCRETE FOUNDATION, TYPE E 30-INCH DIAMETER
24	FOOT	CONCRETE FOUNDATION, TYPE E 36-INCH DIAMETER
21	FOOT	CONCRETE FOUNDATION, TYPE E 42-INCH DIAMETER
1	EACH	DRILL EXISTING HEAVY DUTY HANDHOLE
10	EACH	SIGNAL HEAD, LED, 1-FACE, 3-SECTION, MAST ARM MOUNTED
3	EACH	SIGNAL HEAD, LED, 1-FACE, 3-SECTION, BRACKET MOUNTED
3	EACH	SIGNAL HEAD, LED, 2-FACE, 3-SECTION, BRACKET MOUNTED
2	EACH	PEDESTRIAN SIGNAL HEAD, LED, 1-FACE, BRACKET MOUNTED
1	EACH	PEDESTRIAN SIGNAL HEAD, LED, 2-FACE, BRACKET MOUNTED
9	EACH	INDUCTIVE LOOP DETECTOR
684	FOOT	DETECTOR LOOP, TYPE I
117	FOOT	PREFORMED DETECTOR LOOP
3	EACH	PEDESTRIAN PUSH-BUTTON
1	EACH	TEMPORARY TRAFFIC SIGNAL INSTALLATION
• 4	EACH	RELOCATE EXISTING EMERGENCY VEHICLE PRIORITY SYSTEM, DETECTOR UNIT
• 1	EACH	RELOCATE EXISTING EMERGENCY VEHICLE PRIORITY SYSTEM, PHASING UNIT
1	EACH	REMOVE EXISTING TRAFFIC SIGNAL EQUIPMENT
8	EACH	REMOVE EXISTING HANDHOLE
8	EACH	REMOVE EXISTING CONCRETE FOUNDATION
• 960	FOOT	EMERGENCY VEHICLE PRIORITY SYSTEM LINE SENSOR CABLE, NO. 20 3/C
1	EACH	FULL-ACTUATED CONTROLLER AND TYPE IV CABINET, SPECIAL
1	EACH	UNINTERRUPTIBLE POWER SUPPLY, SPECIAL
1	EACH	TEMPORARY TRAFFIC SIGNAL TIMING
10	EACH	RETROREFLECTIVE TRAFFIC SIGNAL BACKPLATE

• 100% COST TO CITY OF WOODSTOCK

I.D.O.T. TRAFFIC SIGNAL INSTALLATION ELECTRICAL SERVICE REQUIREMENTS					TOTAL WATTAGE
TYPE	NO LAMPS	WATTAGE		%OPERATION	
		INCAND.	LED		
SIGNAL (RED)	19	135	17	0.50	161.5
(YELLOW)	19	135	25	0.25	118.75
(GREEN)	19	135	15	0.25	71.25
ARROW		135	12	0.10	
PED. SIGNAL	4	90	25	1.00	100.0
CONTROLLER ILLUM. SIGN	1	100	100	1.00	100.0
FLASHER				0.50	
ENERGY COSTS TO:				TOTAL =	551.5
CITY OF WOODSTOCK 811 REGINA COURT WOODSTOCK, IL 60098					
ENERGY SUPPLY CONTACT: LISA COOK PHONE: (815) 477-5204 COMPANY: COMMONWEALTH EDISON					

FILE NAME =	USER NAME = #USER#	DESIGNED - PKG	REVISED -
#FILE#		DRAWN - EA, MG	REVISED -
		CHECKED - PKG	REVISED -
		DATE - 11/6/2013	REVISED -

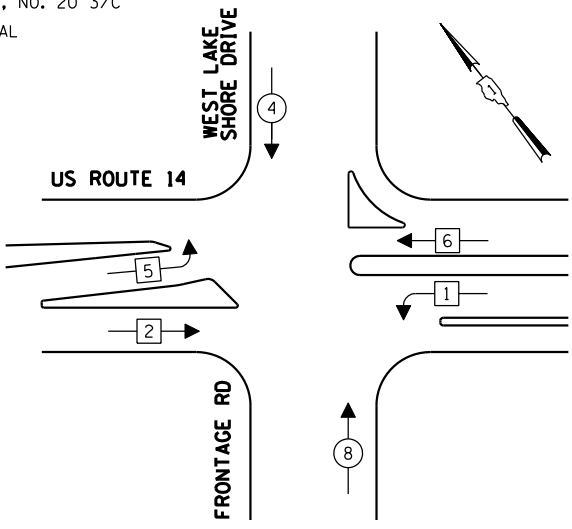
THE CONTRACTOR SHALL RELOCATE THE EXISTING EMERGENCY VEHICLE PRIORITY SYSTEM EQUIPMENTS TO THE NEW TRAFFIC SIGNAL INSTALLATION AT US ROUTE 14 AT WEST LAKE SHORE DR.



CABLE PLAN  
(NOT TO SCALE)

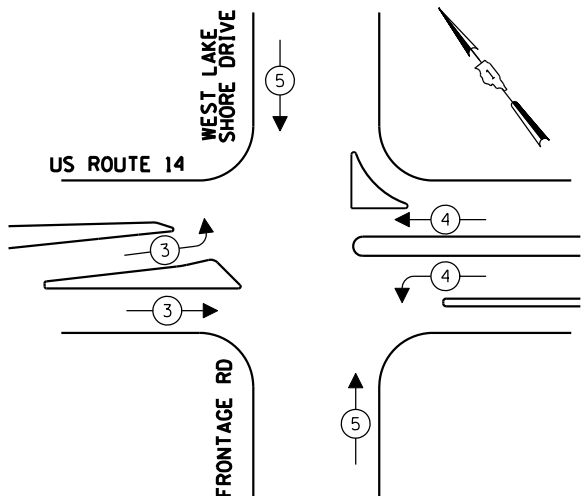
THE TRAFFIC SIGNAL CONTROL EQUIPMENT FOR THIS PROJECT SHALL BE "ECONOLITE" TO MATCH THE EXISTING ADJACENT SYSTEM.

CONTROLLER SEQUENCE



PHASE DESIGNATION DIAGRAM

EMERGENCY VEHICLE PREEMPTION SEQUENCE



EMERGENCY VEHICLE PREEMPTORS			
EMERGENCY VEHICLE PREEMPTOR	3	4	5
MOVEMENT	→	←	↕

STATE OF ILLINOIS  
DEPARTMENT OF TRANSPORTATION

SCHEDULE OF QUANTITIES, CABLE PLAN, PHASE DESIGNATION DIAGRAM,  
AND EMERGENCY VEHICLE PREEMPTION SEQUENCE  
US ROUTE 14 AT WEST LAKE SHORE DRIVE

F.A.P. RTE.	SECTION	COUNTY	TOTAL SHEETS	SHEET NO.
305	27R-2	MCHENRY	673	435
CONTRACT NO. 62268				
FED. ROAD DIST. NO. - [ILLINOIS] FED. AID PROJECT				

SCALE: N.T.S. SHEET NO. OF SHEETS STA. TO STA.