

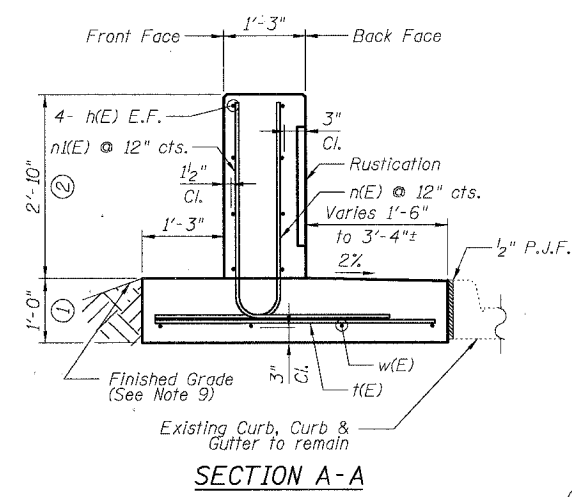
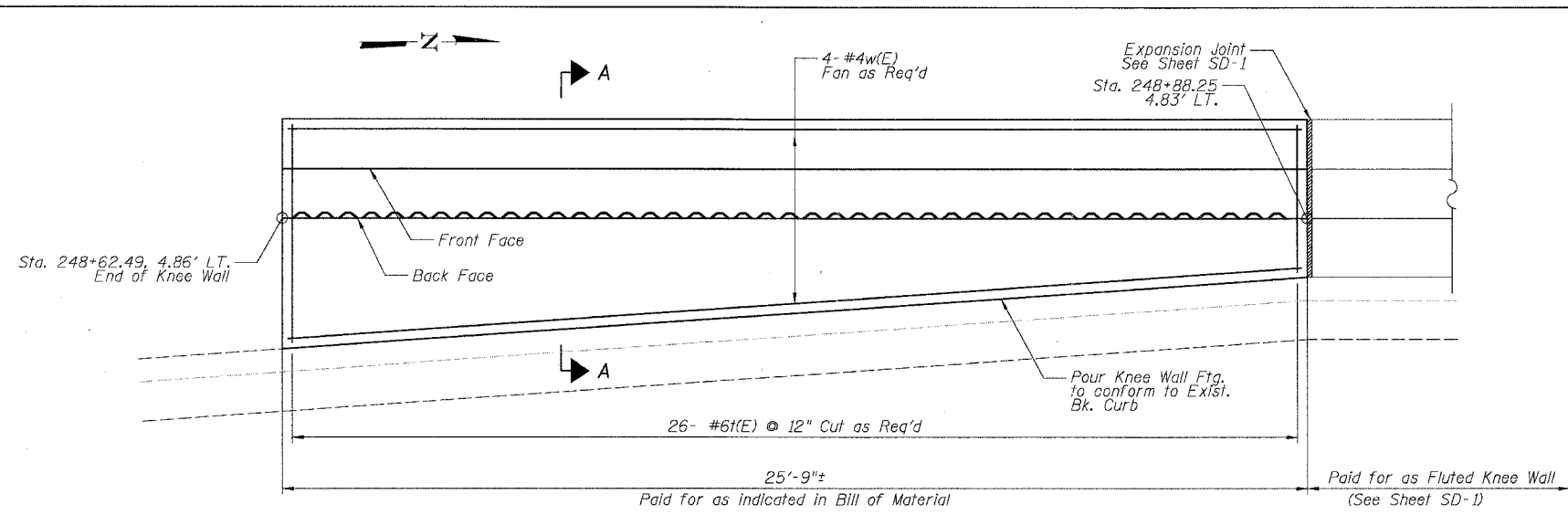
F.A.I.	SECTION	COUNTY	TOTAL SHEETS	SHEET NO.
94/90	•	COOK	32	16
STA.	TO STA.			
FED. ROAD DIST. NO.	ILLINOIS	FED. AID PROJECT		
62991				

DETAIL A REINFORCEMENT SCHEDULE AND BILL OF MATERIAL

Bar	No.	Size	Length	Shape
h(E)	8	#4	25'-5"	—
n(E)	26	#6	5'-6"	L
n(E)	26	#5	5'-10"	L
h(E)	26	#6	5'-6"	—
w(E)	4	#4	25'-5"	—
Item	Unit	Qty.		
① Concrete Structures	Cu. Yd.	4.7		
② Concrete Superstructure	Cu. Yd.	3.4		
Reinforcement Bars, Epoxy Coated	Pound	800		
Rustication Finish	Sq. Ft.	48		
Protective Coat	Sq. Yd.	19		

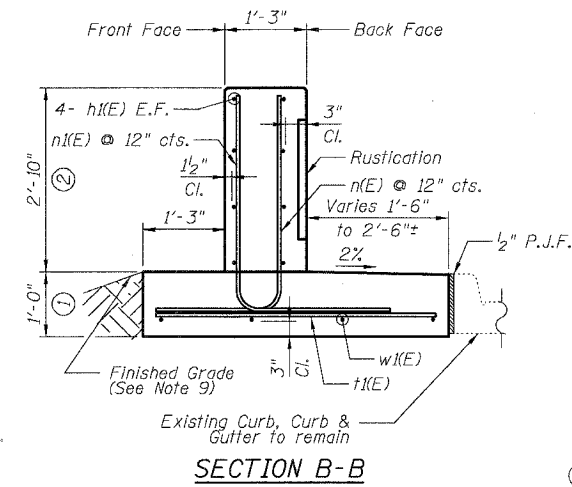
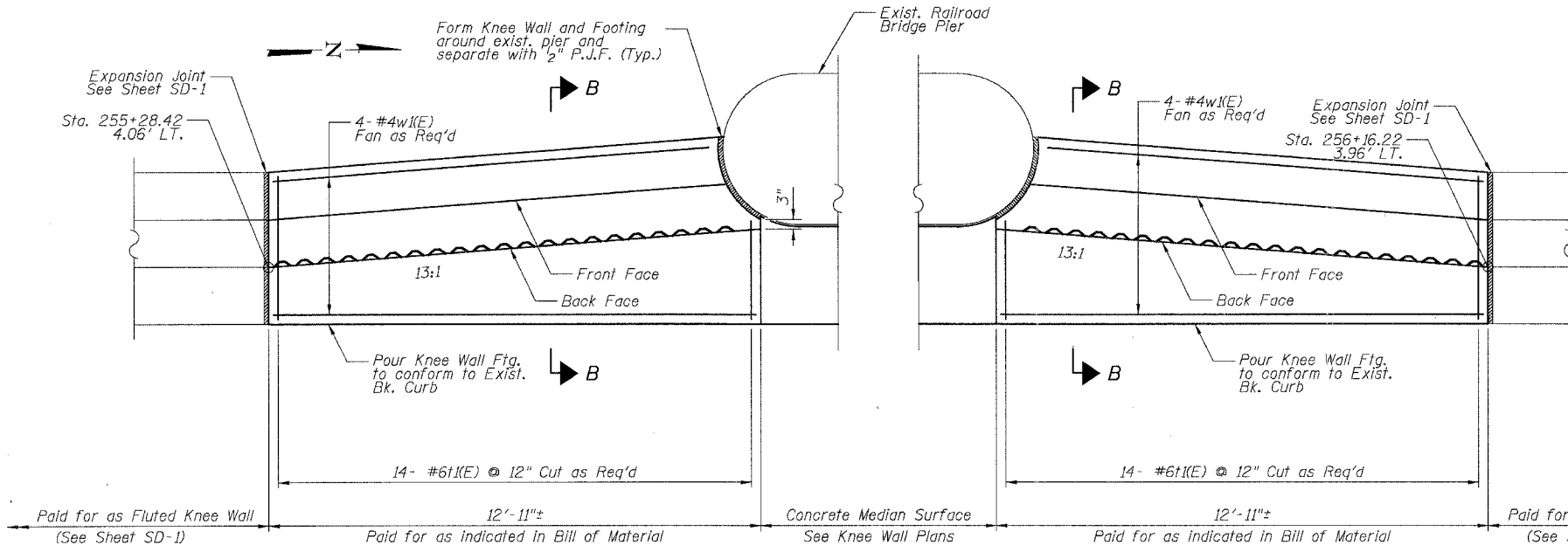
DETAIL B REINFORCEMENT SCHEDULE AND BILL OF MATERIAL

Bar	No.	Size	Length	Shape
h(E)	16	#4	12'-4"	—
n(E)	28	#6	5'-6"	L
n(E)	28	#5	5'-10"	L
t(E)	28	#6	4'-7"	—
w(E)	8	#4	12'-7"	—
Item	Unit	Qty.		
① Concrete Structures	Cu. Yd.	4.4		
② Concrete Superstructure	Cu. Yd.	3.5		
Reinforcement Bars, Epoxy Coated	Pound	800		
Rustication Finish	Sq. Ft.	48		
Protective Coat	Sq. Yd.	18		



S. LA SALLE ST.

DETAIL A

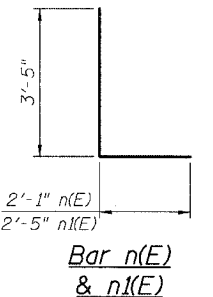


S. LA SALLE ST.

DETAIL B

NOTES:

- All stations and offsets measured from S. La Salle St. @.
- Back Face is face adjacent to Frontage Rd. and Front Face is face adjacent to Expressway.
- Concrete: f'c = 3500 psi
- Provide California Finish on top of Foundation between stem and Frontage Road. See Roadway Details.
- At locations where Fluted Knee Wall abuts a rigid Structure, a 1/2" thick Preformed Expansion Joint Filler conforming to the shape of the Structure shall be installed between the Fluted Knee Wall and the Structure.
- Apply Protective Coat to top and back face of stem and top of Frontage Road side of foundation.
- For Fluted Knee Wall standard details, see Sheet SD-1
- B.F. = Back Face (Frontage Road Side)
F.F. = Front Face (Expressway Side)
E.F. = Each Face
- Shape finished grade as required to match existing conditions.
- P.J.F. included in cost of concrete structures.



REVISIONS	
NAME	DATE

ILLINOIS DEPARTMENT OF TRANSPORTATION
 F.A.I. 94/90 (DAN RYAN EXPRESSWAY)
 NORTHBOUND KNEE WALLS (ROOT ST TO PERSHING RD)

SCALE: NTS
 DATE: 04/25/08

DRAWN BY: TL
 CHECKED BY: BLU

BOWMAN, BARRETT & ASSOCIATES INC.
 CONSULTING ENGINEERS
 Chicago, Illinois
 312.228.0100
 www.bbainc.com

4/24/2008