

F.A.I. RTE.	SECTION	COUNTY	TOTAL SHEETS	SHEET NO.
39	57-2I	MCLEAN	18	1
FED. ROAD DIST. NO. 113		ILLINOIS	CONTRACT NO. 70797	

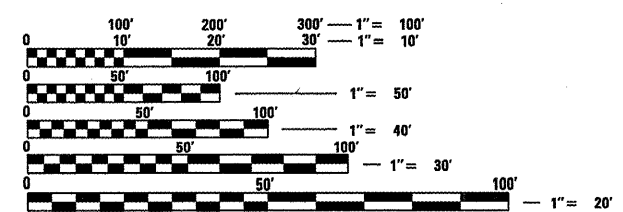
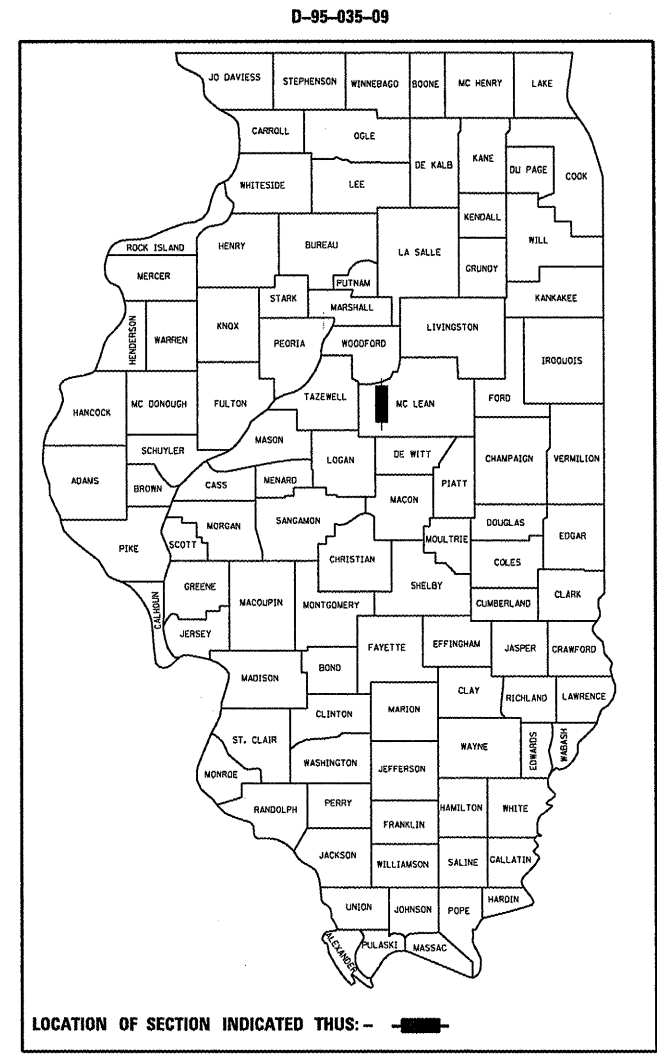
STATE OF ILLINOIS  
DEPARTMENT OF TRANSPORTATION  
DIVISION OF HIGHWAYS  
**PROPOSED  
HIGHWAY PLANS**

FOR INDEX OF SHEETS, SEE SHEET NO. 2  
FOR SUMMARY OF QUANTITIES, SEE SHEET NO. 4

**CURRENT ADT = 20,600 (2008)**

**FAI ROUTE 39  
SECTION 57-2I  
MCLEAN COUNTY  
BRIDGE APPROACH ROADWAY  
OVER I-55 0.3 MI W OF BUS 51 IN NORMAL**  
C-95-035-09

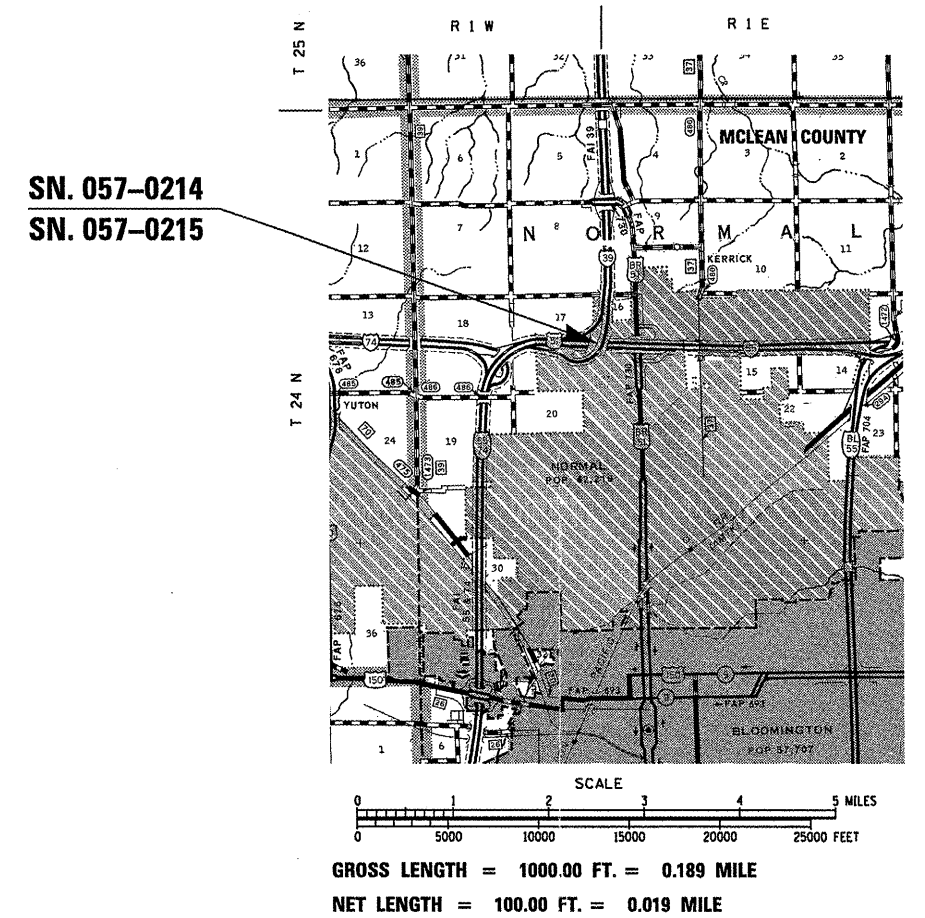
**DESIGN DESIGNATION  
INTERSTATE  
N/A**



FULL SIZE PLANS HAVE BEEN PREPARED USING STANDARD ENGINEERING SCALES. REDUCED SIZED PLANS WILL NOT CONFORM TO STANDARD SCALES. IN MAKING MEASUREMENTS ON REDUCED PLANS, THE ABOVE SCALES MAY BE USED.

**J.U.L.I.E.  
JOINT UTILITY LOCATION INFORMATION FOR EXCAVATION  
1-800-892-0123  
OR 811**

**PROJECT ENGINEER - NANCY FASIG  
PROJECT MANAGER - TODD BLACK  
PHONE: (217)465-4181  
CONTRACT NO. 70797**



STATE OF ILLINOIS  
DEPARTMENT OF TRANSPORTATION  
DIVISION OF HIGHWAYS

SUBMITTED 3/27 20 09  
*Joseph E. Anderson*  
DEPUTY DIRECTOR OF HIGHWAYS, REGION ENGINEER

May 8, 20 09  
*Charles J. Ingersoll*  
ENGINEER OF DESIGN AND ENVIRONMENT

May 8, 20 09  
*Christine M. Reed*  
DIRECTOR OF HIGHWAYS, CHIEF ENGINEER

**PRINTED BY THE AUTHORITY  
OF THE STATE OF ILLINOIS**

## INDEX OF SHEETS

<u>SHEET NO.</u>	<u>DESCRIPTION</u>
1	COVER SHEET
2	INDEX OF SHEETS
2	LIST OF STANDARDS
3	GENERAL NOTES
4	SUMMARY OF QUANTITIES
5-7	EXISTING TYPICAL SECTIONS
8	SCHEDULES OF QUANTITIES
9	BRIDGE PLAN AND PROFILE SN057-0214, RAMP A
10	BRIDGE PLAN AND PROFILE SN057-0215, I-39 NB
11	DETAILS OF BRIDGE APPROACH SPAN AND ABUTMENTS
12	DETAILS OF BRIDGE APPROACH PAVEMENT, STANDARD 2353 (3-26-1974)
13	DETAILS OF BRIDGE APPROACH SHOULDER PAVEMENT, STANDARD 2324 (12-01-1969)
14-15	DETAILS OF I-39 / I-55 INTERCHANGE STATIONING
16	DETAIL OF TRAFFIC CONTROL SETUP FOR SOUTHBOUND I-39 RAMP A CLOSURE, MESSAGE BOARD AND DETOUR SIGN PLACEMENT
17	DETAIL OF TRAFFIC CONTROL FOR RAMPS, APPLICATION NO. 2 RAMP CLOSURE, DISTRICT 5 DETAIL NO. 70103710
18	DETAILS OF EXISTING JOINTED P.C.C. PAVEMENT (HINGE-JOINT) AND ADJACENT P.C.C. SHOULDER

## HIGHWAY STANDARDS

<u>STANDARD NUMBER</u>	<u>NAME OF STANDARD</u>
000001-05	STANDARD SYMBOLS, ABBREVIATIONS AND PATTERNS
001001-02	AREAS OF REINFORCEMENT BARS
001006	DECIMAL OF AN INCH AND OF A FOOT
420001-07	PAVEMENT JOINTS
420101-04	24' (7.2m) JOINTED PCC PAVEMENT
420106-04	36' (10.8m) JOINTED PCC PAVEMENT
420701-02	PAVEMENT FABRIC
701101-02	OFF-ROAD OPERATIONS, MULTILANE, 15' TO 24" FROM PAVEMENT EDGE
701400-03	APPROACH TO LANE CLOSURE, FREEWAY/EXPRESSWAY
701401-05	LANE CLOSURE, FREEWAY/EXPRESSWAY
701411-05	LANE CLOSURE, MULTILANE, AT ENTRANCE OR EXIT RAMP, FOR SPEEDS ≥ 45 MPH
701901-01	TRAFFIC CONTROL DEVICES

FILE NAME =	USER NAME = blackrt	DESIGNED -	REVISED -	<b>STATE OF ILLINOIS DEPARTMENT OF TRANSPORTATION</b>	<b>INDEX OF SHEETS AND HIGHWAY STANDARDS</b>	F.A.I. RTE.	SECTION	COUNTY	TOTAL SHEETS	SHEET NO.			
c:\pwork\pwork\DOT\BLACKRT\d0128799\057	797-SHT-GENNOTE.dgn	DRAWN JJB	REVISED -			39	57-2I	MCLEAN	18	2			
PLOT SCALE = 48.0354' / IN.	CHECKED -	REVISED -	REVISED -			CONTRACT NO. 70797							
PLOT DATE = 3/27/2009	DATE -	REVISED -	REVISED -		SCALE: NA	SHEET NO.	OF	SHEETS	STA.	TO STA.	FED. ROAD DIST. NO.	ILLINOIS	FED. AID PROJECT

# GENERAL NOTES

G. N. -100

ENGLISH UNITS OF MEASUREMENT SHALL GOVERN OVER AND SUPERSEDE ANY METRIC UNITS SHOWN IN THIS CONTRACT. WHERE INCLUDED, METRIC UNITS ARE FOR INFORMATION ONLY.

G. N. - 105.07 SPECIAL

THERE MAY BE STATE-OWNED AND MAINTAINED UTILITY LINES PRESENT WHICH WERE INSTALLED BY THE STATE BUT ARE NOT SHOWN ON THE PLANS. THE CONTRACTOR SHALL NOTIFY THE DISTRICT OPERATIONS ENGINEER TWO WEEKS PRIOR TO COMMENCING ANY EXCAVATION OR BORING. THE STATE WILL THEN LOCATE AND MARK THE HORIZONTAL LOCATIONS OF THE LINES AND PROVIDE ANY AVAILABLE INFORMATION AS TO THEIR DEPTH. SHOULD ANY OF THE LINES BE DAMAGED BY THE CONTRACTOR'S OPERATION, THE CONTRACTOR SHALL REPAIR THEM TO THE SATISFACTION OF THE ENGINEER AND AT NO COST TO THE STATE.

ALSO THERE MAY BE UTILITIES PRESENT WHICH WERE INSTALLED BY THE STATE BUT ARE MAINTAINED BY OTHERS (CITY, TOWN, ETC. ) THE LOCATIONS OF THESE LINES ARE NOT SHOWN ON THE PLANS THE CONTRACTOR SHALL COORDINATE THE LOCATING OF THESE LINES WITH THE LOCAL AGENCY PRIOR TO COMMENCING ANY EXCAVATION OR BORING. SHOULD THESE LINES BE DAMAGED BY THE CONTRACTOR'S OPERATIONS, THE CONTRACTOR SHALL REPAIR THEM TO THE SATISFACTION OF, AND AT NO COST TO, THE LOCAL AGENCY AND THE STATE.

G. N. -667

THE RESIDENT ENGINEER SHALL CONTACT THE PROGRAM DEVELOPMENT CHIEF OF SURVEYS PRIOR TO THE PRE-CONSTRUCTION CONFERENCE FOR INSTRUCTION AS TO SETTING OF TEMPORARY OR PERMANENT TIES FOR CENTERLINE ALIGNMENT CONTROL SURVEY MARKERS (PC'S, PT'S, AND PI'S). PROJECT IMPLEMENTATION PERSONNEL WILL BE RESPONSIBLE FOR SETTING THESE MARKERS.

NO COMMITMENTS

FILE NAME =	USER NAME = buklesJJ	DESIGNED -	REVISED -	<b>STATE OF ILLINOIS DEPARTMENT OF TRANSPORTATION</b>	<b>GENERAL NOTES</b>	F.A.I. RTE.	SECTION	COUNTY	TOTAL SHEETS	SHEET NO.	
c:\pwwork\pwwork\dot\buklesJJ\08128799\057	797-SHT-GENNOTE.dgn	DRAWN <i>JJB</i>	REVISED -			39	57-21	MCLEAN	18	3	
	PLOT SCALE = 40.0000" / 1"	CHECKED -	REVISED -			CONTRACT NO. 70797					
	PLOT DATE = 3/27/2009	DATE -	REVISED -			SCALE: NA	SHEET NO. OF SHEETS	STA.	TO STA.	FED. ROAD DIST. NO.	ILLINOIS FED. AID PROJECT

# SUMMARY OF QUANTITIES

LOCATION OF WORK:

FAI - 39  
Mclean County  
Sta. 95+00.00 to 105+00.00  
Urban - Multilane  
100% State  
X220-2A

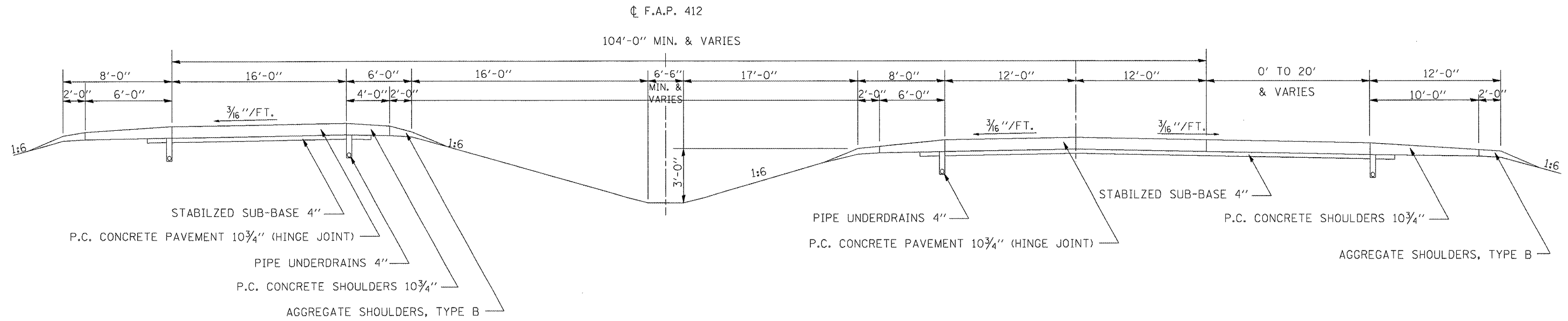
CODE NO	ITEM	UNIT	TOTAL QUANTITY	
67100100	MOBILIZATION	L SUM	1.0	1.0
70100420	TRAFFIC CONTROL AND PROTECTION, STANDARD 701411	EACH	1.0	1.0
70100800	TRAFFIC CONTROL AND PROTECTION, STANDARD 701401	L SUM	1.0	1.0
70103815	TRAFFIC CONTROL SURVEILLANCE	CAL DA	15.0	15.0
X0329857	POLYURETHANE MATERIAL	POUND	10785.0	10785.0
X7015005	CHANGEABLE MESSAGE SIGN	CAL DA	55.0	55.0

FILE NAME * c:\pwwork\pwwork\BUDGET\BUCKLESJJ\0128799\0378797-SHT-SCHEDULE.dgn	USER NAME * bucklesjj	DESIGNED -	REVISED -	<b>STATE OF ILLINOIS DEPARTMENT OF TRANSPORTATION</b>	<b>SUMMARY OF QUANTITIES</b>	F.A.I. RTE. 39	SECTION 57-21	COUNTY MCLEAN	TOTAL SHEETS 18	SHEET NO. 4
DRAWN <i>JJB</i>	CHECKED -	DATE -	REVISED -	SCALE: NA	SHEET NO. OF SHEETS STA. TO STA.	CONTRACT NO. 70797 FED. ROAD DIST. NO. ILLINOIS FED. AID PROJECT				

# EXISTING TYPICAL SECTION F.A.P. 412 (I-39)

I-39 /-55 INTERCHANGE

TYPICAL I-39 RAMPS AND I-39 MAINLINE WITH AUXILIARY LANE



FILE NAME =	USER NAME = bucklesjj	DESIGNED -	REVISED -
c:\pwwork\pwwid\DOT\BUCKLESJJ\d0128799\d0128799-70797-SHT-TYPICAL.dgn		DRAWN <i>JJB</i>	REVISED -
		CHECKED -	REVISED -
		DATE -	REVISED -

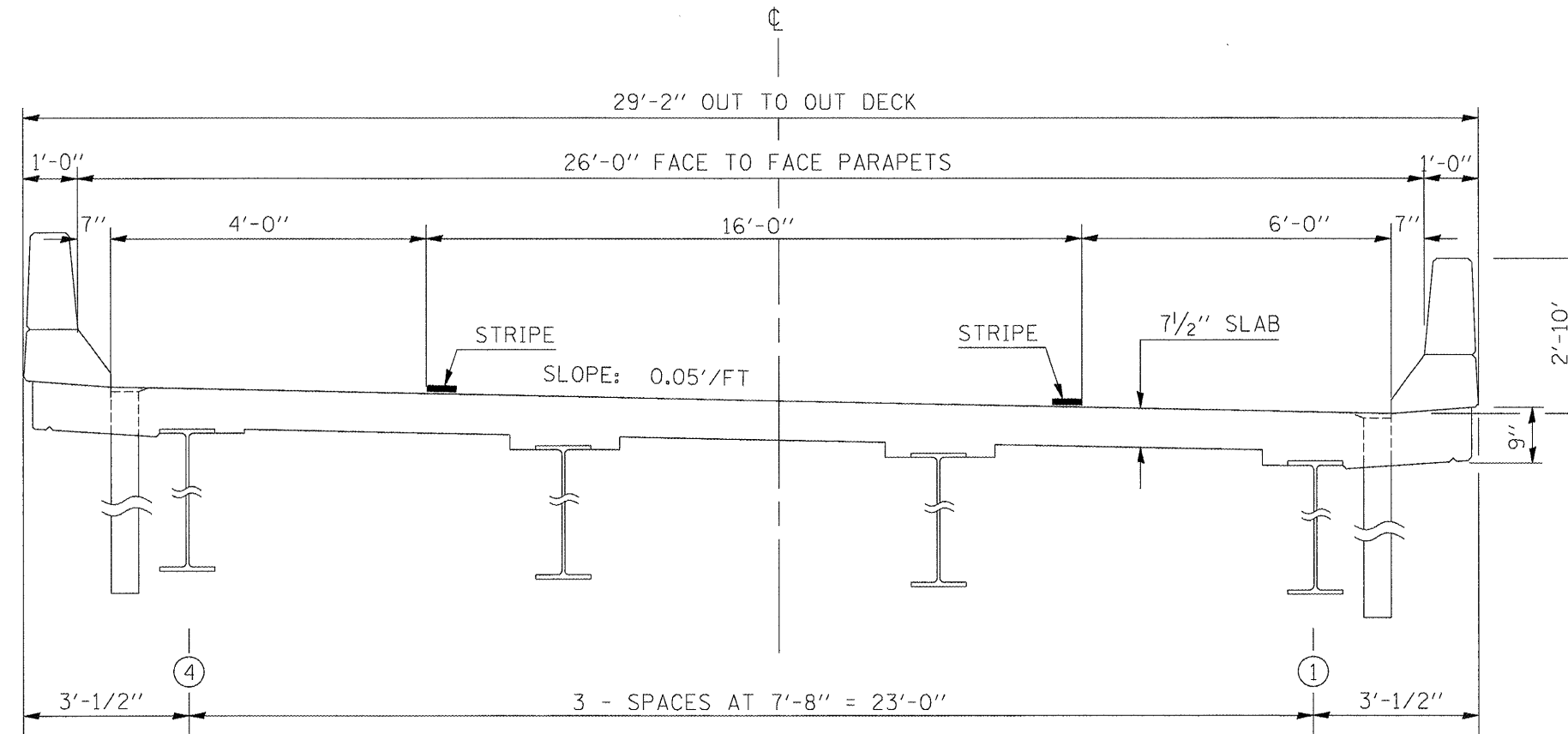
**STATE OF ILLINOIS  
DEPARTMENT OF TRANSPORTATION**

<b>EXISTING TYPICAL SECTION</b>			
SCALE:	SHEET NO. OF SHEETS	STA. TO STA.	

F.A. RTE.	SECTION	COUNTY	TOTAL SHEETS	SHEET NO.
39	57-21	MCLEAN	18	5
CONTRACT NO. 70797				
ILLINOIS FED. AID PROJECT				

# EXISTING STRUCTURE TYPICAL SECTION

RAMP A LOOKING SOUTH  
STRUCTURE # 057-0214



FILE NAME =	USER NAME = bucklesjj	DESIGNED -	REVISED -
ei\pwwork\PIWIDOT\BUCKLESJJ\d0128799\0570797-SHT-TYPICAL.dgn		DRAWN <i>JJB</i>	REVISED -
		CHECKED -	REVISED -
		DATE -	REVISED -

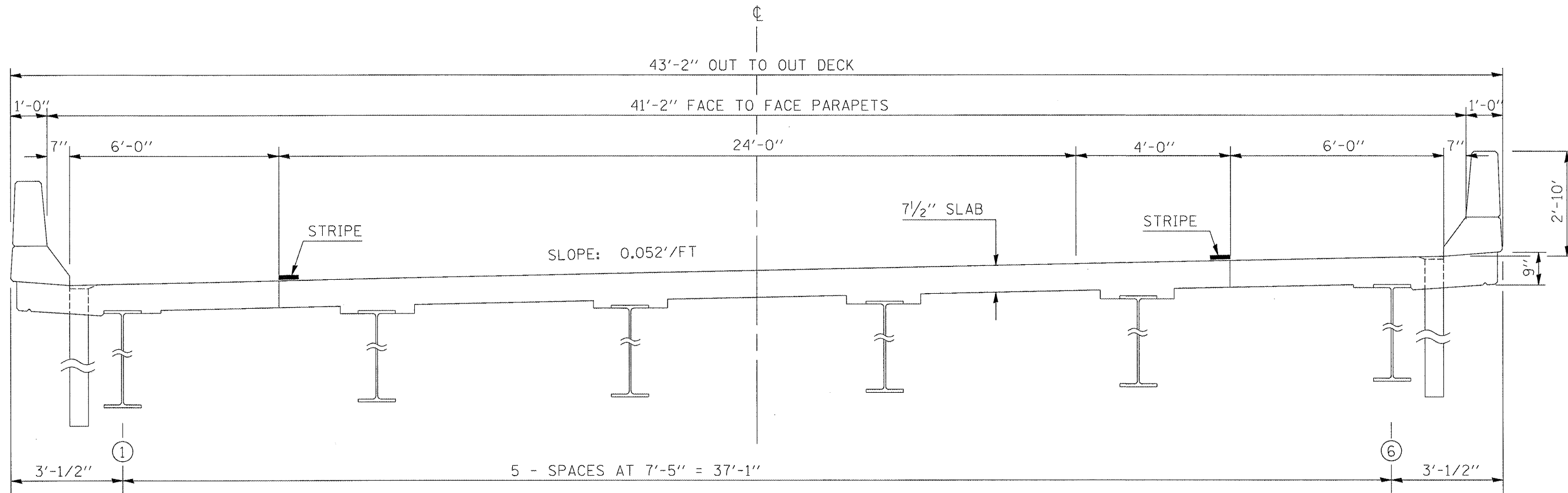
**STATE OF ILLINOIS  
DEPARTMENT OF TRANSPORTATION**

<b>EXISTING TYPICAL SECTION</b>			
SCALE:	SHEET NO. OF SHEETS	STA.	TO STA.

F.A. RTE.	SECTION	COUNTY	TOTAL SHEETS	SHEET NO.
39	57-21	MCLEAN	18	6
CONTRACT NO. 70797				
ILLINOIS FED. AID PROJECT				

# EXISTING STRUCTURE TYPICAL SECTION

**I-39 N.B. LOOKING NORTH  
STRUCTURE # 057-0215**



FILE NAME =	USER NAME = bucklesjj	DESIGNED -	REVISED -
es:\pwork\pwork\BucklesJJ\d0128799\d01	70797-SHT-TYPICAL.dgn	DRAWN JJB	REVISED -
	PLOT SCALE = 48,000' / IN.	CHECKED -	REVISED -
	PLOT DATE = 3/27/2009	DATE -	REVISED -

**STATE OF ILLINOIS  
DEPARTMENT OF TRANSPORTATION**

**EXISTING TYPICAL SECTION**

SCALE: SHEET NO. OF SHEETS STA. TO STA.

F.A. RTE.	SECTION	COUNTY	TOTAL SHEETS	SHEET NO.
39	57-21	MCLEAN	18	7
CONTRACT NO. 70797			ILLINOIS FED. AID PROJECT	

## SCHEDULE OF QUANTITIES

### X0329857 POLYURETHANE MATERIAL

STATION TO STATION	LOCATION	WEIGHT ( POUND)
STA. 98+87 TO STA. 99+87	I-39 NBDL NORTH APPROACH PAVEMENT	2585.0
STA. 98+87 TO STA. 99+87	I-39 NBPL NORTH APPROACH PAVEMENT	2515.0
SUBTOTAL =		<u>5100.0</u>

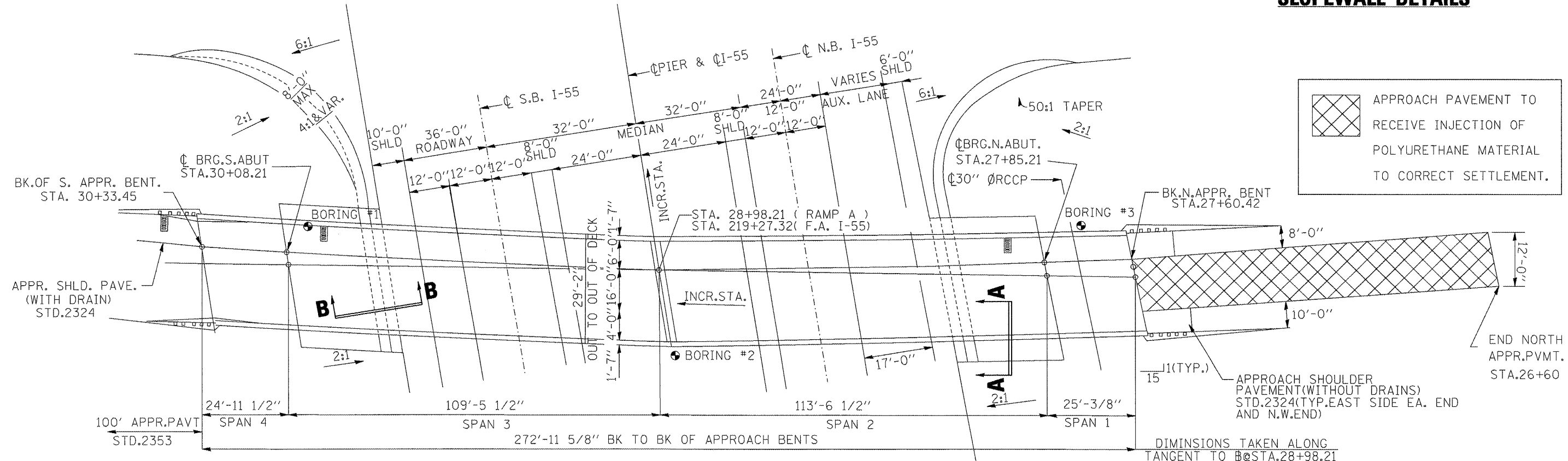
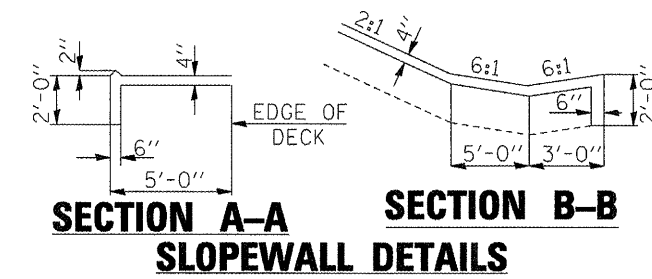
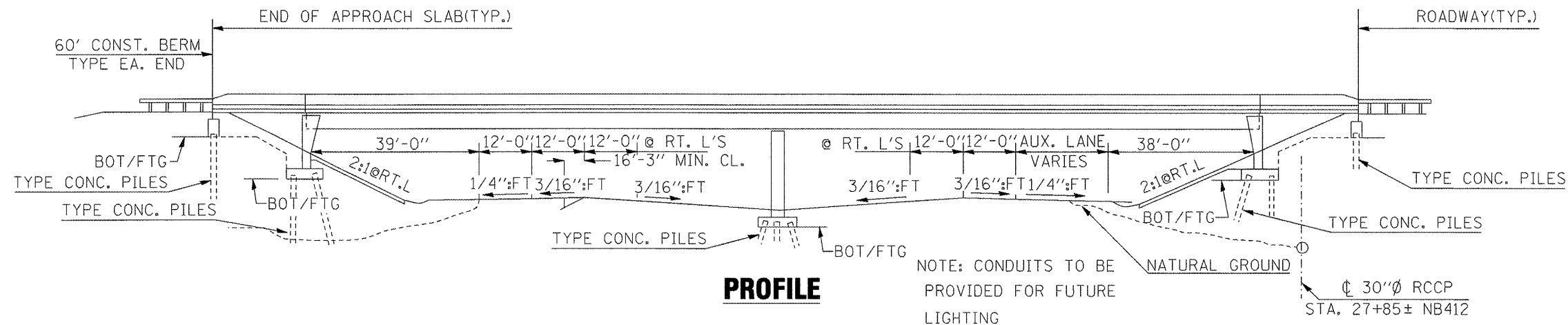
STATION TO STATION	LOCATION	WEIGHT ( POUND)
STA. 26+60 TO STA. 27+60	I-39 SB TO I-55 NB RAMP A NORTH APPROACH PAVEMENT	<u>5685.0</u>
SUBTOTAL =		<u>5685.0</u>
TOTAL =		<u><u>10785.0</u></u>

FILE NAME =	USER NAME = bucklesjj	DESIGNED -	REVISED -	<b>STATE OF ILLINOIS DEPARTMENT OF TRANSPORTATION</b>	<b>SCHEDULES OF QUANTITIES</b>	F.A.I RTE.	SECTION	COUNTY	TOTAL SHEETS	SHEET NO.	
ca\pwwork\PWIDOT\BUCKLESJJ\d0128799\00	70797-SHT-SCHEDULE.dgn	DRAWN - JJB	REVISED -			39	57-2I	MCLEAN	18	8	
	PLOT SCALE = 48.0000 ' / IN.	CHECKED -	REVISED -			CONTRACT NO. 70739					
	PLOT DATE = 3/27/2009	DATE -	REVISED -			SCALE: NA	SHEET NO. 6 OF 6 SHEETS	STA.	TO STA.	FED. ROAD DIST. NO.	ILLINOIS FED. AID PROJECT



# BRIDGE PLAN AND PROFILE

## STRUCTURE 057-0214

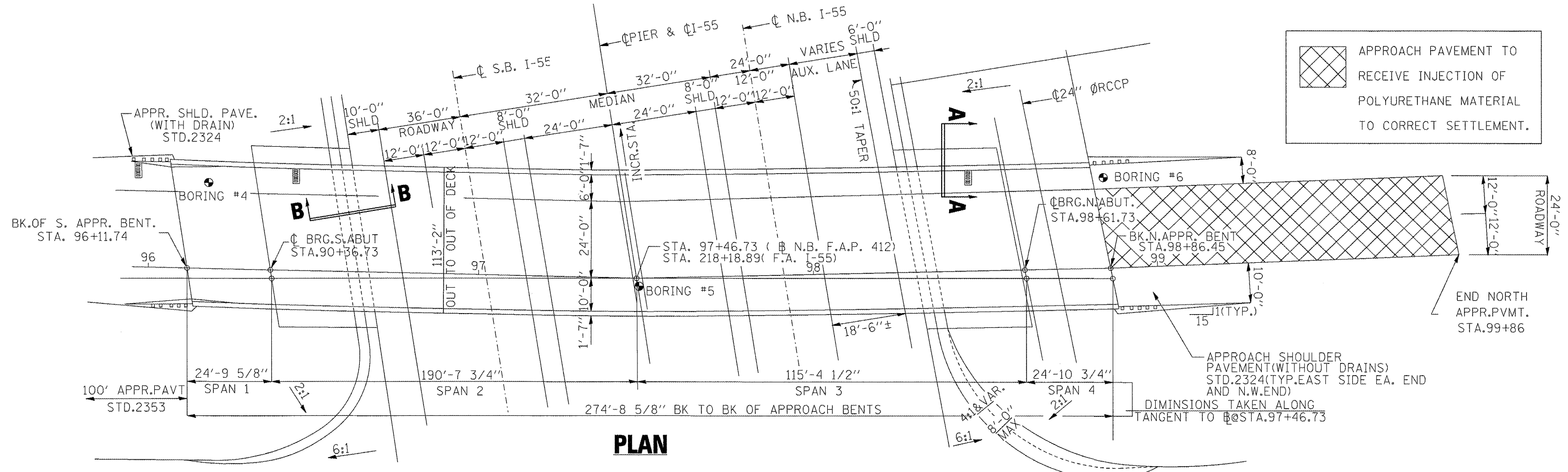
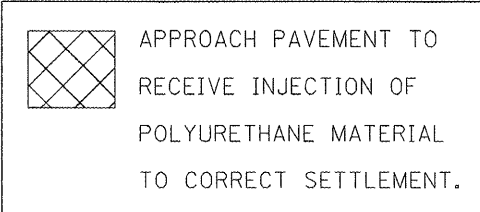
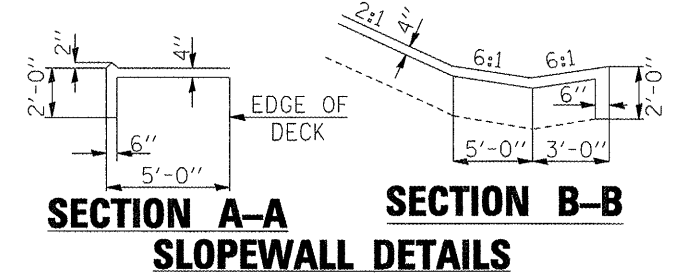
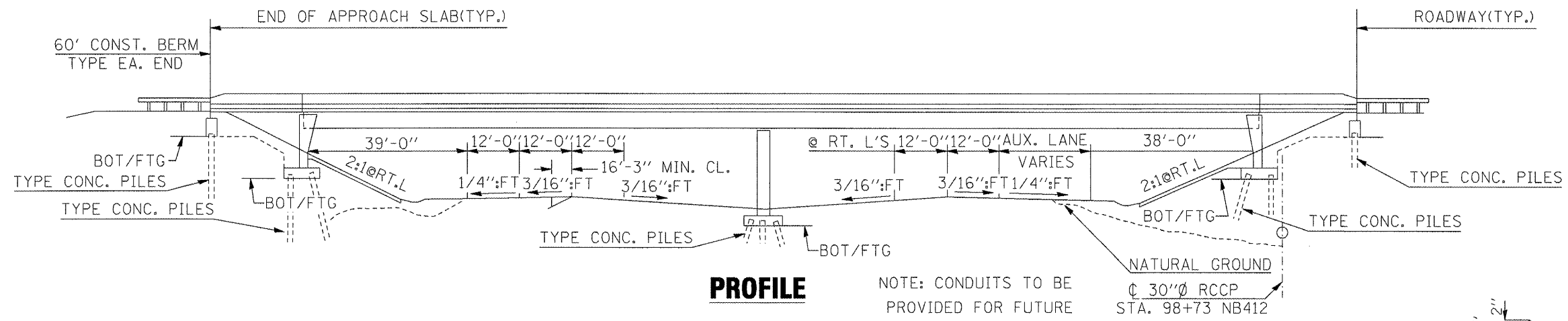


APPROACH PAVEMENT TO RECEIVE INJECTION OF POLYURETHANE MATERIAL TO CORRECT SETTLEMENT.

FILE NAME = <small>o:\p\work\p\dot\bucklesj\d0128799\0570797-SHT-PLAN.dgn</small>	USER NAME = bucklesj	DESIGNED - DRAWN - JJB	REVISED - REVISED - REVISED - REVISED -	<b>STATE OF ILLINOIS DEPARTMENT OF TRANSPORTATION</b>	<b>PLAN AND PROFILE 057-0214</b>	F.A.I. RTE. 39	SECTION 57-21	COUNTY MCLEAN	TOTAL SHEETS 18	SHEET NO. 9
						SCALE: SHEET NO. OF SHEETS STA. TO STA.				

# BRIDGE PLAN AND PROFILE

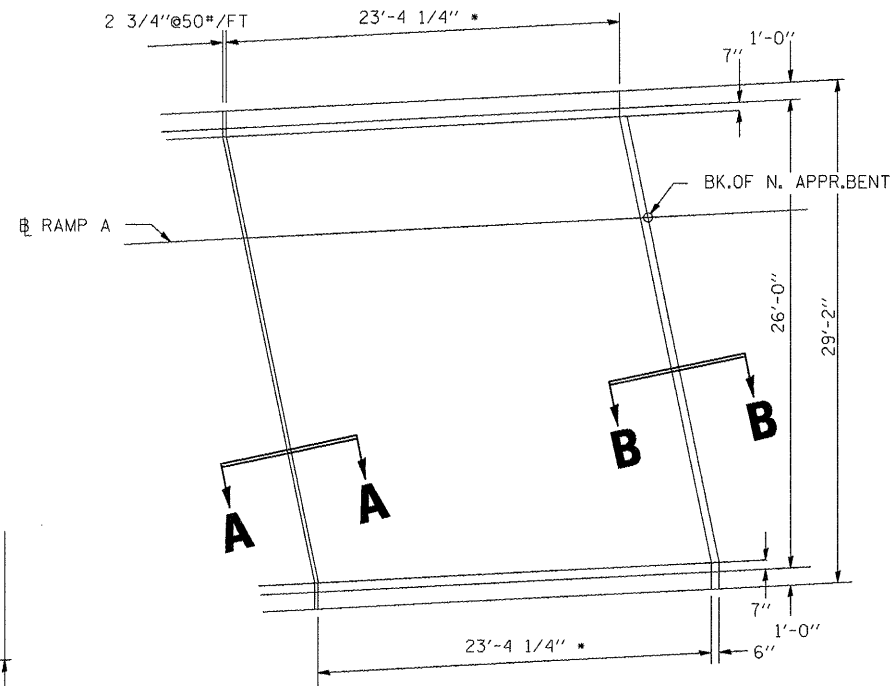
## STRUCTURE 057-0215



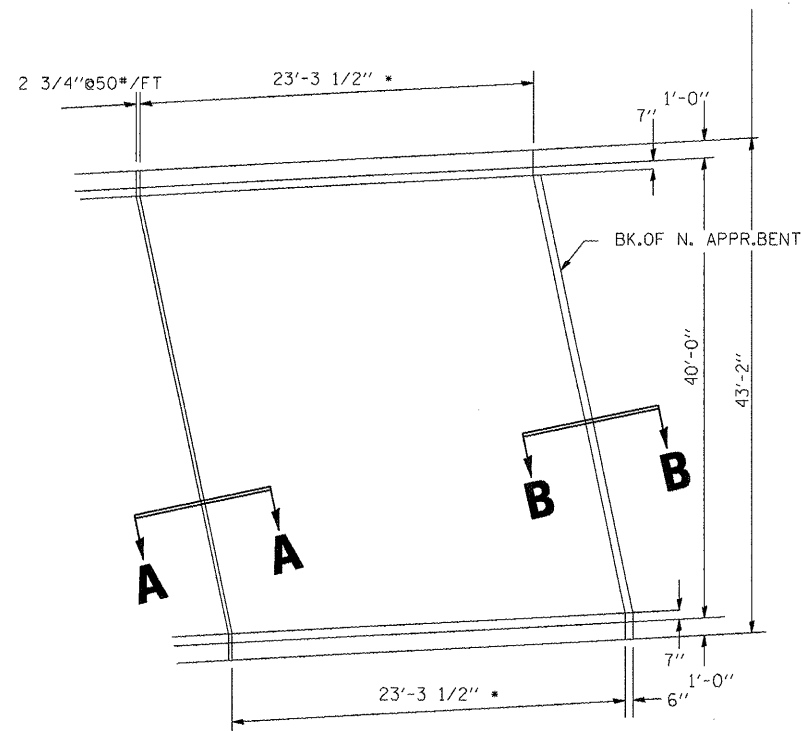
FILE NAME =		USER NAME = buckles,jj		DESIGNED -		REVISED -		<b>STATE OF ILLINOIS</b> <b>DEPARTMENT OF TRANSPORTATION</b>				<b>PLAN AND PROFILE</b> <b>057-0215</b>				F.A.I. RTE. 39		SECTION 57-21		COUNTY MCLEAN		TOTAL SHEETS 18		SHEET NO. 10	
c:\pwwork\pwwork\project\buckles\057-0215\057-0215-PLAN.dgn		DRAWN - JJG		REVISED -		REVISED -										CONTRACT NO. 70797		ILLINOIS FED. AID PROJECT							
PLOT SCALE = 48,0000 "/ IN.		CHECKED -		REVISED -		REVISED -																			
PLOT DATE = 3/27/2009		DATE -		REVISED -		REVISED -																			
SCALE:		SHEET NO.		OF SHEETS		STA. TO STA.																			

# BRIDGE APPROACH SPAN DETAILS

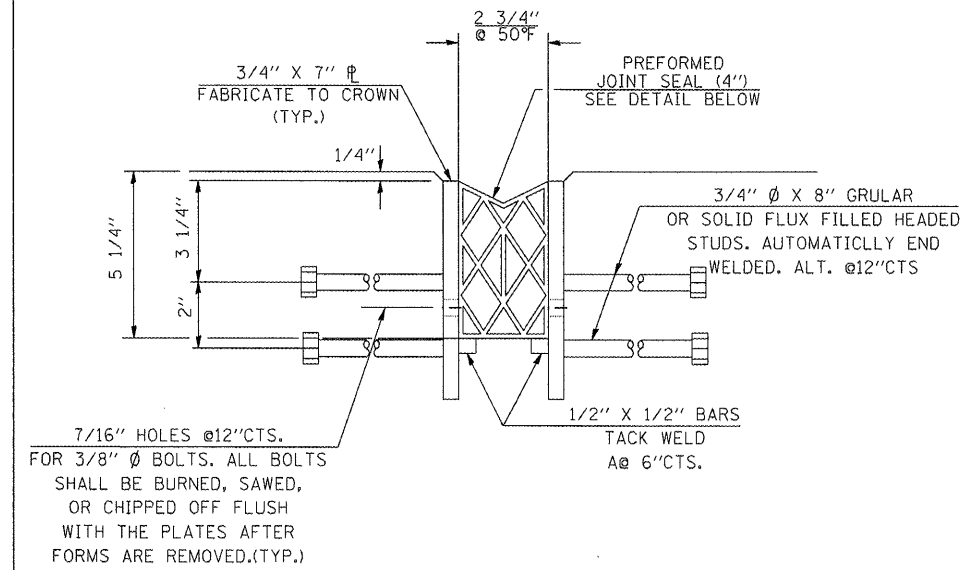
## S.B. STRUCTURE 057-0214 N.B. STRUCTURE 057-0215



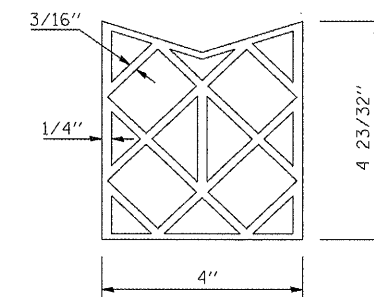
**NORTH APPROACH SPAN  
STRUCTURE # 057-0214  
(I-39 S.B. RAMP A)**



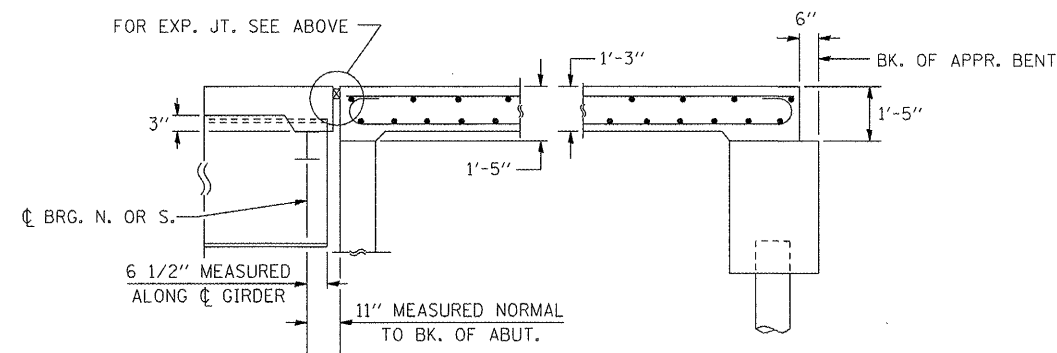
**NORTH APPROACH SPAN  
STRUCTURE # 057-0215  
(I-39 N.B. MAINLINE)**



**TYPICAL SECTION AT EXPANSION JOINT**



**PREFORMED JOINT SEAL (4")**



**SECTION A-A**

**SECTION B-B**

FILE NAME =	USER NAME = bucklesjj	DESIGNED -	REVISED -
ca:\pw\work\p\idat\bucljesjj\d0128799\0570215-SHT-PLAN.dgn		DRAWN - JJB	REVISED -
	PLOT SCALE = 48.0000' / IN.	CHECKED -	REVISED -
	PLOT DATE = 3/27/2009	DATE -	REVISED -

**STATE OF ILLINOIS  
DEPARTMENT OF TRANSPORTATION**

**DETAILS OF BRIDGE APPROACH  
SPAN AND ABUTMENTS**

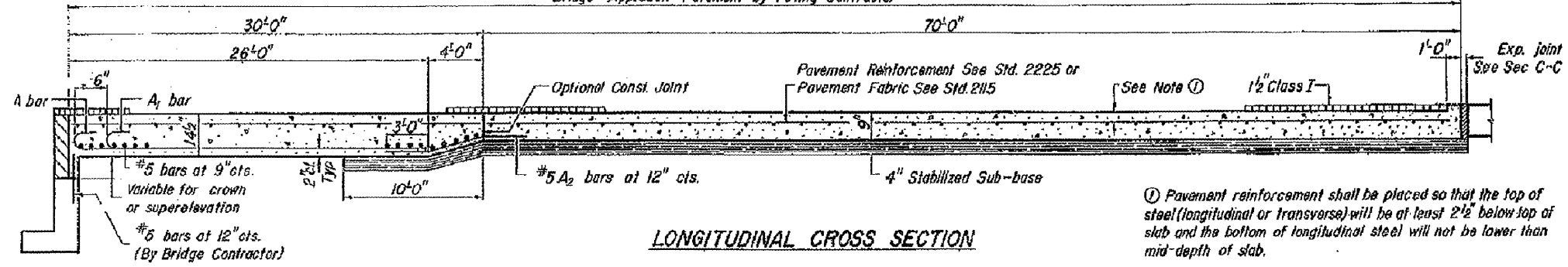
F.A.I. RTE.	SECTION	COUNTY	TOTAL SHEETS	SHEET NO.
39	57-21	MCLEAN	18	11
CONTRACT NO. 70797				
ILLINOIS FED. AID PROJECT				

SCALE: SHEET NO. OF SHEETS STA. TO STA.

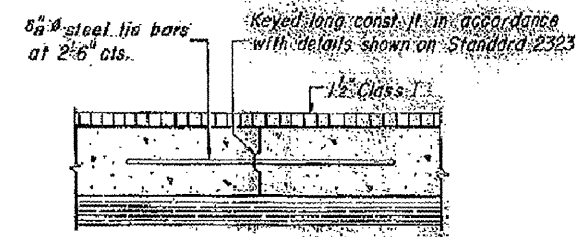
# DETAILS OF BRIDGE APPROACH PAVEMENT

Note: Tilt hook of #9 bars for min. 2" cl.

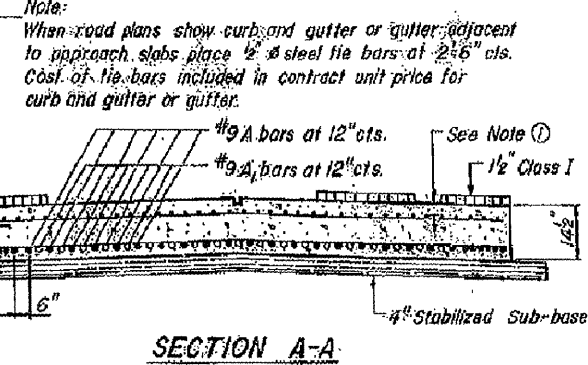
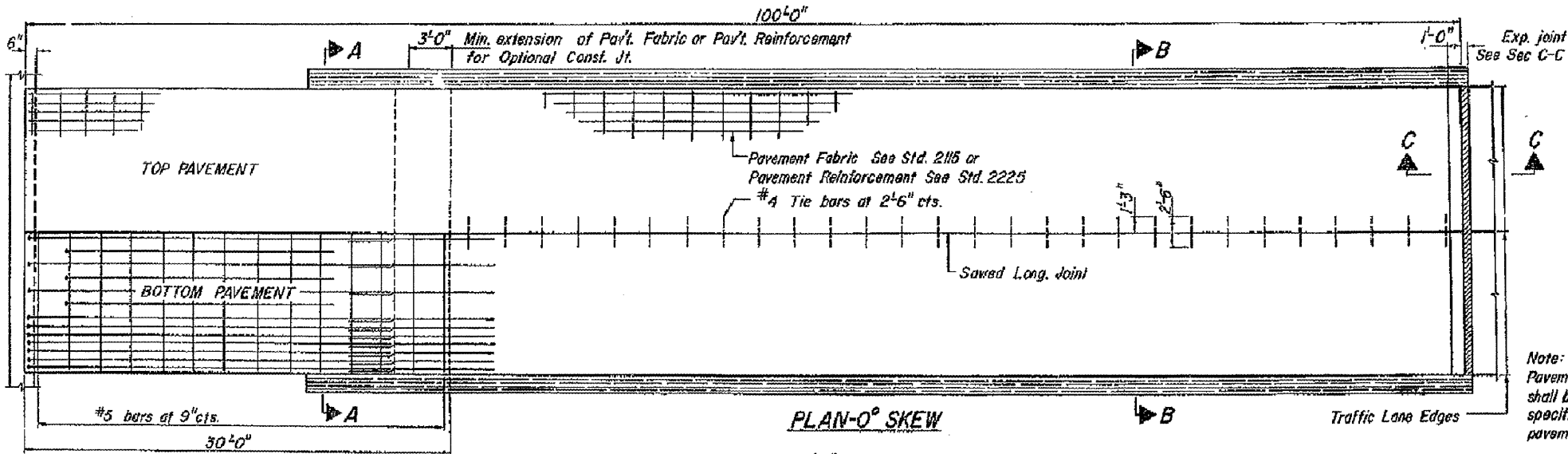
Bridge Approach Pavement by Paving Contractor



① Pavement reinforcement shall be placed so that the top of steel (longitudinal or transverse) will be at least 2" below top of slab and the bottom of longitudinal steel will not be lower than mid-depth of slab.



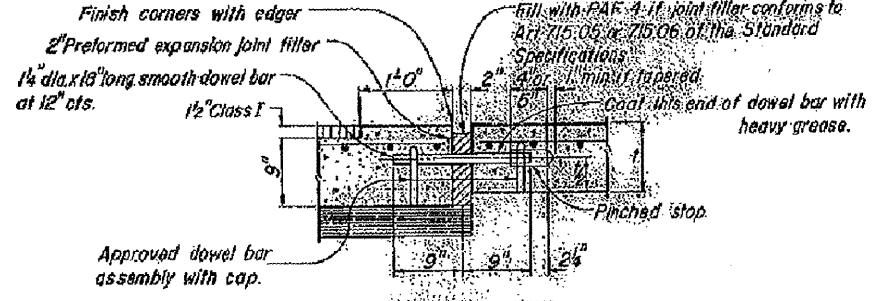
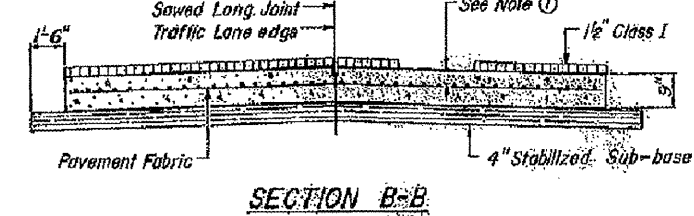
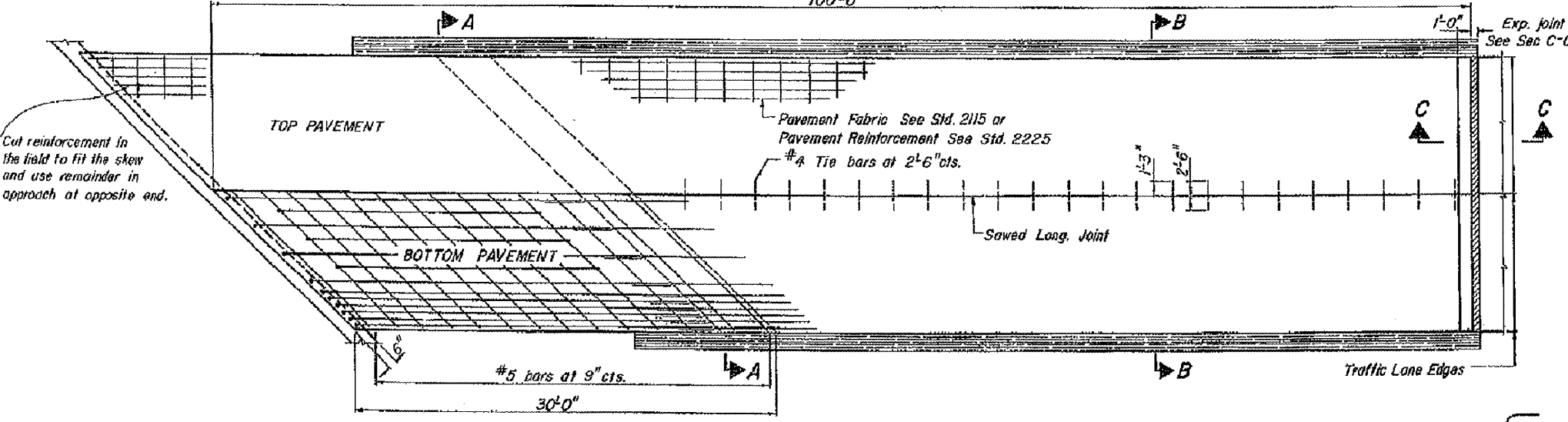
As approved by the Engineer, the contractor may elect to reduce the widths by use of the Optional Longitudinal Construction Joint shown. Joint shall be located at the edge of traffic lane.



Note: When road plans show curb and gutter or gutter adjacent to approach slabs place 1/2" steel tie bars at 2'-6" cts. Cost of tie bars included in contract unit price for curb and gutter or gutter.

The bars in accordance with details for Bulkhead Longitudinal Construction Joint shown on Standard 2323. The transition for gutter shall be made in 100 feet and will be paid for as CONCRETE GUTTER, of the type specified. The transition for curb and gutter shall be made in 100 feet and will be paid for as COMBINATION CURB and GUTTER, of the type specified.

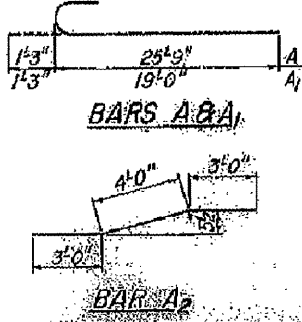
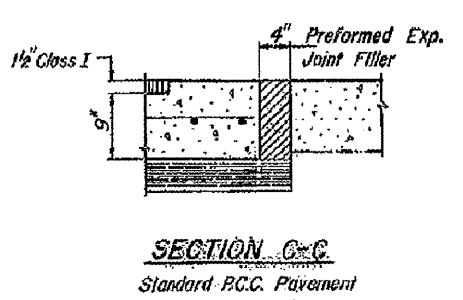
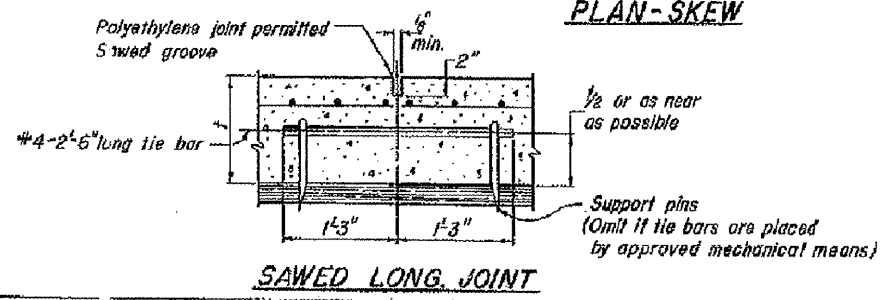
Note: Pavement Reinforcement shall be the same as that specified in the adjacent pavement.



Approved dowel bar assembly with cap.

Fill with PAF-A-1 if joint filler conforms to Art. 715.05 or 715.06 of the Standard Specifications. 2" dia. x 18" long smooth dowel bar at 12" cts. Coat this end of dowel bar with heavy grease.

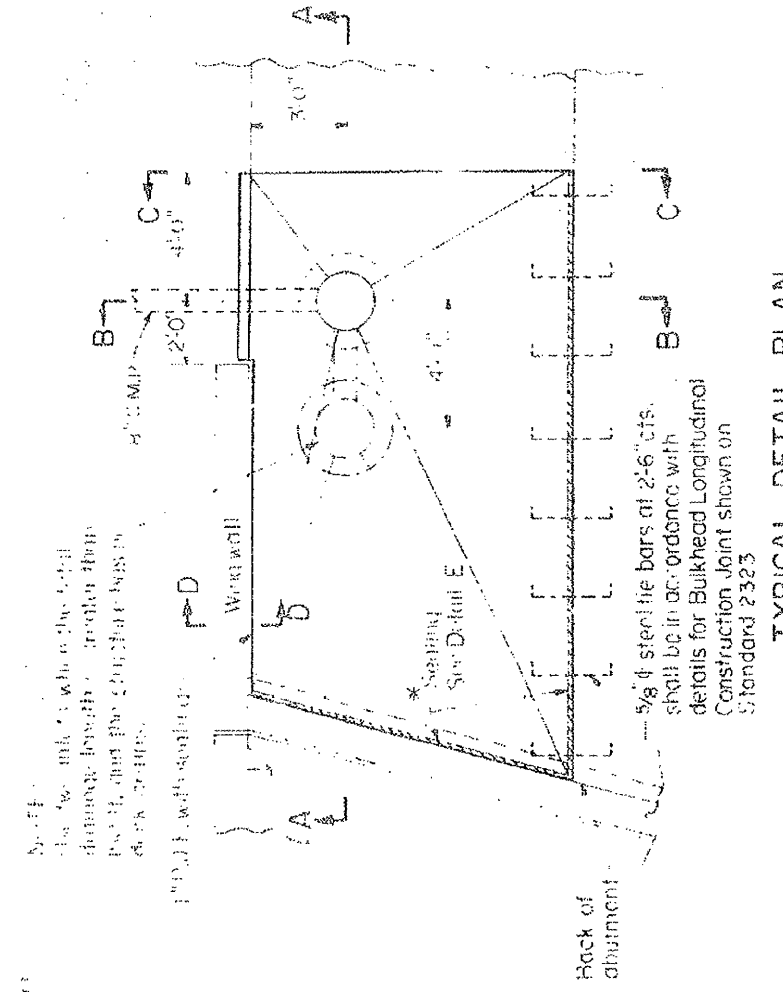
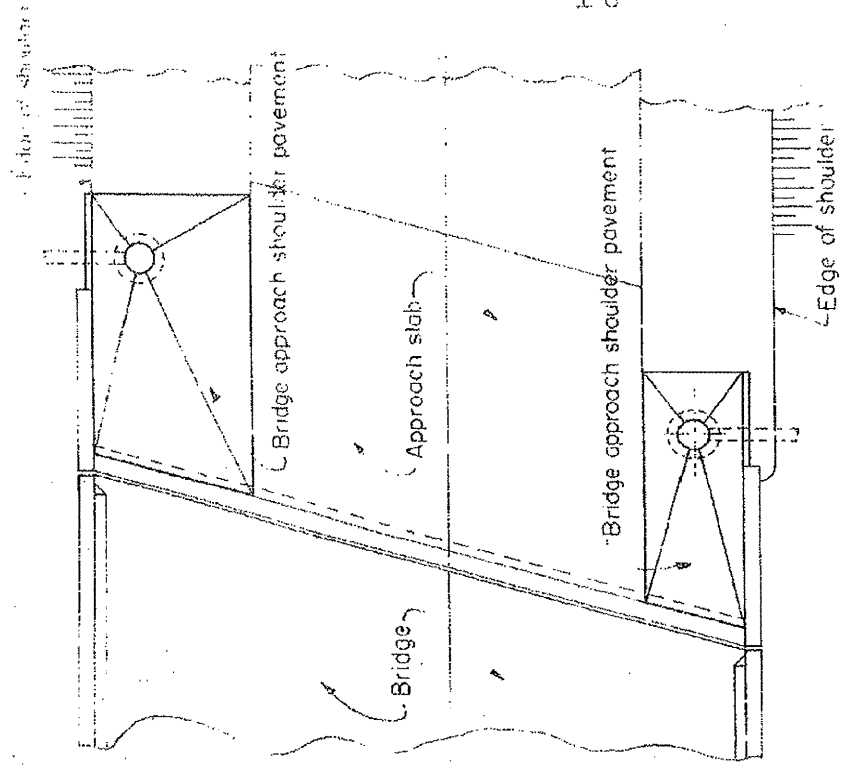
**SECTION C-C**  
Continuous Reinforced P.C.C. Pavement.



STATE OF ILLINOIS DEPARTMENT OF TRANSPORTATION		ISSUED
PASSED <u>March 26 1974</u>		REVISIONS
Approved: <u>Mac 28 1974</u>		
Engineer of Bridge and Road Structures		
Engineer of Design		

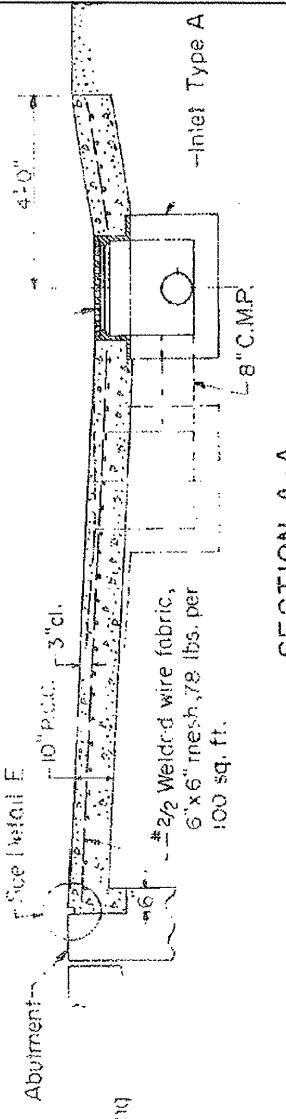
FILE NAME =	USER NAME = buckleeJJ	DESIGNED -	REVISED -	<b>STATE OF ILLINOIS DEPARTMENT OF TRANSPORTATION</b>	<b>DETAILS OF BRIDGE APPROACH PAVEMENT, STANDARD 2353 (3-26-1974)</b>	F.A.I. RTE.	SECTION	COUNTY	TOTAL SHEETS	SHEET NO.
at:\pwork\PIWIDOT\BUCKLEJJ\0128799\0570797-SHT-DETAILS.dgn	DRAWN JJB	REVISIONS -	REVISIONS -			39	57-21	MCLEAN	18	12
PLOT SCALE = 40.0000 / / IN.	CHECKED -	REVISIONS -	REVISIONS -			CONTRACT NO. 70797				
PLOT DATE = 3/27/2009	DATE -	REVISIONS -	REVISIONS -			ILLINOIS FED. AID PROJECT				

# STANDARD DESIGN BRIDGE APPROACH SHOULDER PAVEMENT

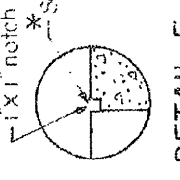


**GENERAL PLAN**

**TYPICAL DETAIL PLAN**

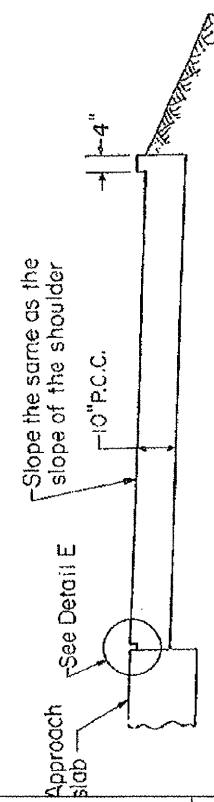
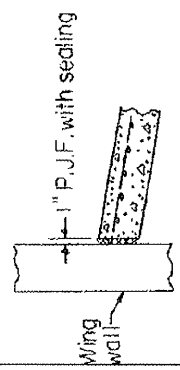


**SECTION A-A**



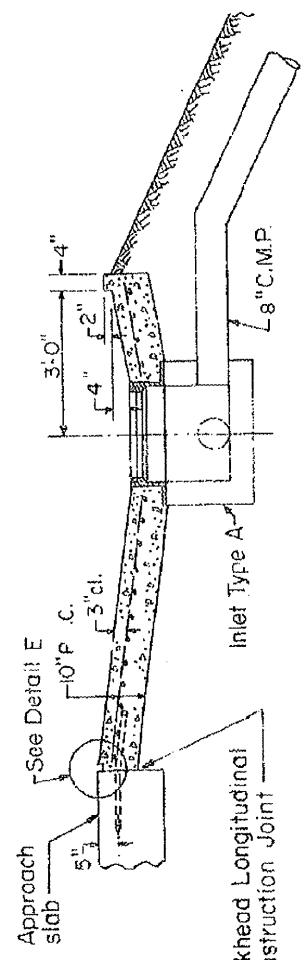
**DETAIL E**

**SECTION D-D**



**SECTION C-C**

**SECTION B-B**



**GENERAL NOTES**  
 \* Where indicated, joints shall be sealed with two component, non-staining, gray, sealing compound with polysulfide liquid polymers, gun grade with primers.

See bridge approach slab plans for location of bridge approach shoulder pavement.

For placement of drainage elements on existing construction with existing rigid approach pavement, substitute expansion anchor bolts for tie bars. For non-rigid approaches, shoulder pavement will be as shown except omit tie bars and inside edge sealing.

For bridges with end posts partially or completely on superstructure, locate the center line of 8" drain pipe a minimum of 6 ft. behind the back of abutment measured as an extension of the outside superstructure edge. If end posts are completely on superstructure, use the outer 2 x 4" lip for full length of shoulder pavement.

**STANDARD 2324**  
 (Half size)

FILE NAME =	USER NAME = bucklesj	DESIGNED -	REVISED -
ca:\pwwork\pwwork\BUCKLESJ\10128799\070797-SHT-DETAILS.dgn		DRAWN <i>JJB</i>	REVISED -
PLOT SCALE = 48,0000' / IN.		CHECKED -	REVISED -
PLOT DATE = 3/27/2009		DATE -	REVISED -

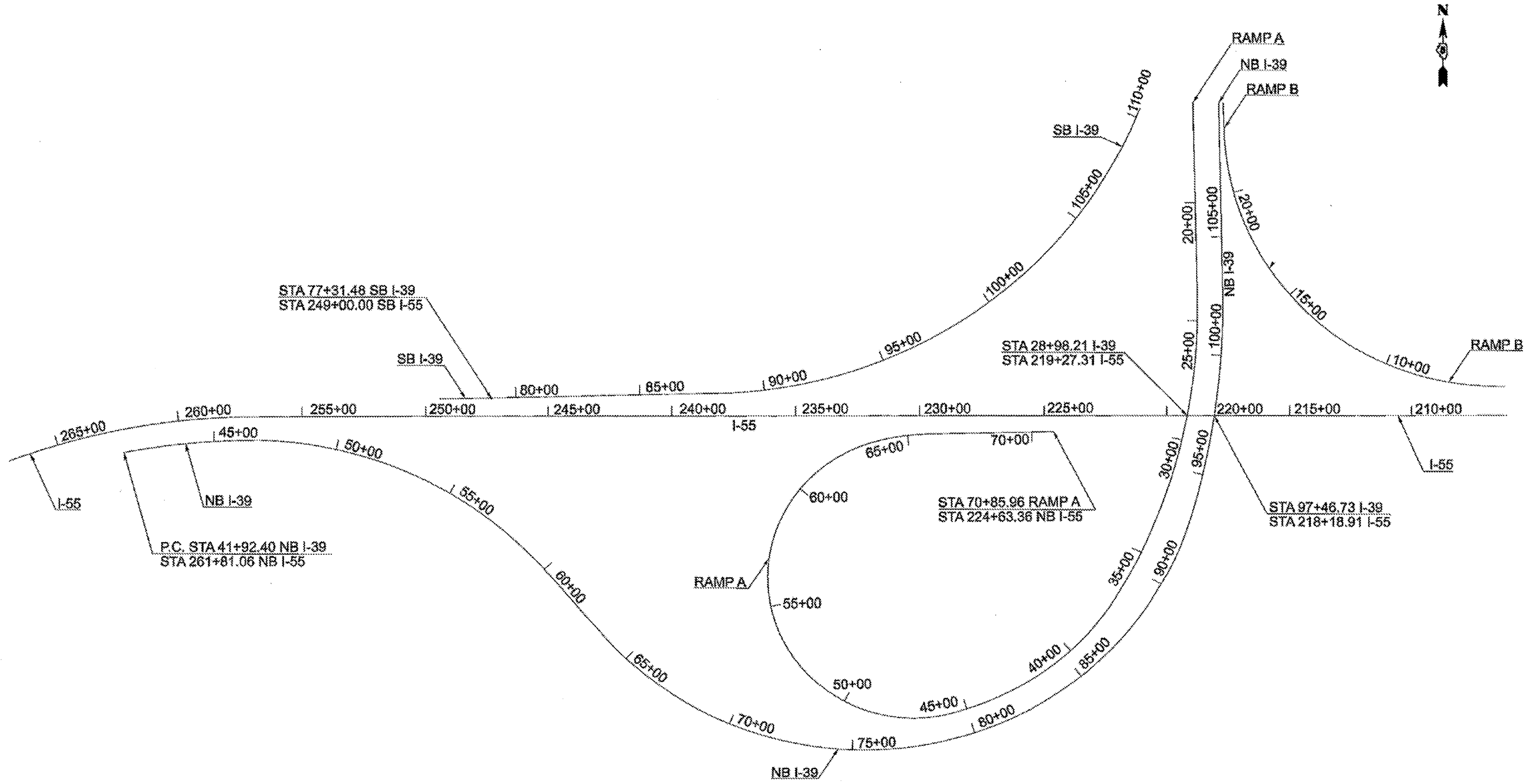
**STATE OF ILLINOIS  
DEPARTMENT OF TRANSPORTATION**

**DETAILS OF BRIDGE APPROACH SHOULDER PAVEMENT,  
STANDARD 2324 (12-01-1969)**

SCALE: SHEET NO. OF SHEETS STA. TO STA.

F.A. RTE.	SECTION	COUNTY	TOTAL SHEETS	SHEET NO.
39	57-21	MCLEAN	18	13
ILLINOIS FED. AID PROJECT			CONTRACT NO. 70797	

STATE OF ILLINOIS DEPARTMENT OF PUBLIC WORKS & BUILDINGS DIVISION OF HIGHWAYS		ISSUED 12-1-69
PASSED	Dec. 1, 1969	REVISIONS
<i>W. L. ...</i> Engineer of Road Plans and Contracts		W.F. 12-1-69
APPROVED	Dec. 1, 1969	
<i>W. B. ...</i> Engineer of Design		



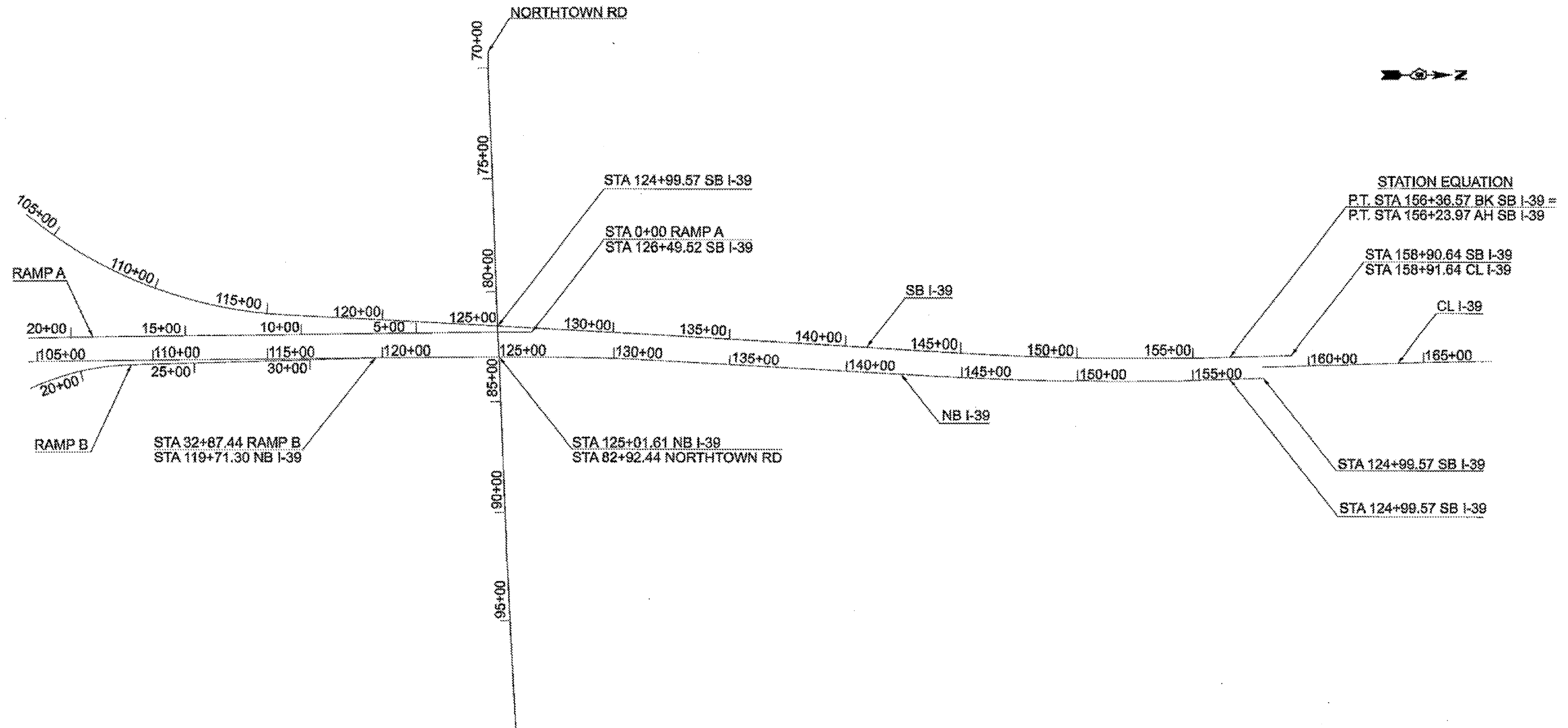
FILE NAME =	USER NAME = bucklesjj	DESIGNED -	REVISED -
er:\pwork\PMIDOT\BUCKLESJJ\d0128799\070797-SHT-DETAILS.dgn		DRAWN - JJB	REVISED -
		CHECKED -	REVISED -
		DATE -	REVISED -

**STATE OF ILLINOIS  
DEPARTMENT OF TRANSPORTATION**

**I-39/I-55 INTERCHANGE STATIONING**

SCALE: SHEET NO. 1 OF 2 SHEETS STA. TO STA.

F.A.I. RTE.	SECTION	COUNTY	TOTAL SHEETS	SHEET NO.
39	57-21	MCLEAN	18	14
CONTRACT NO. 70797				
ILLINOIS FED. AID PROJECT				



STATION EQUATION  
 P.T. STA 156+36.57 BK SB I-39 =  
 P.T. STA 156+23.97 AH SB I-39

STA 158+90.64 SB I-39  
 STA 158+91.64 CL I-39

CL I-39

STA 124+99.57 SB I-39

STA 124+99.57 SB I-39

FILE NAME =	USER NAME = bucklesjj	DESIGNED -	REVISED -
ca:\pwork\p\WIDOT\BUCKLESJJ\d0128799\070797-SHT-DETAILS.dgn		DRAWN - JJB	REVISED -
PLOT SCALE = 100.0000' / IN.		CHECKED -	REVISED -
PLOT DATE = 3/27/2009		DATE -	REVISED -

**STATE OF ILLINOIS  
 DEPARTMENT OF TRANSPORTATION**

**I-39 / I-55 INTERCHANGE STATIONING**

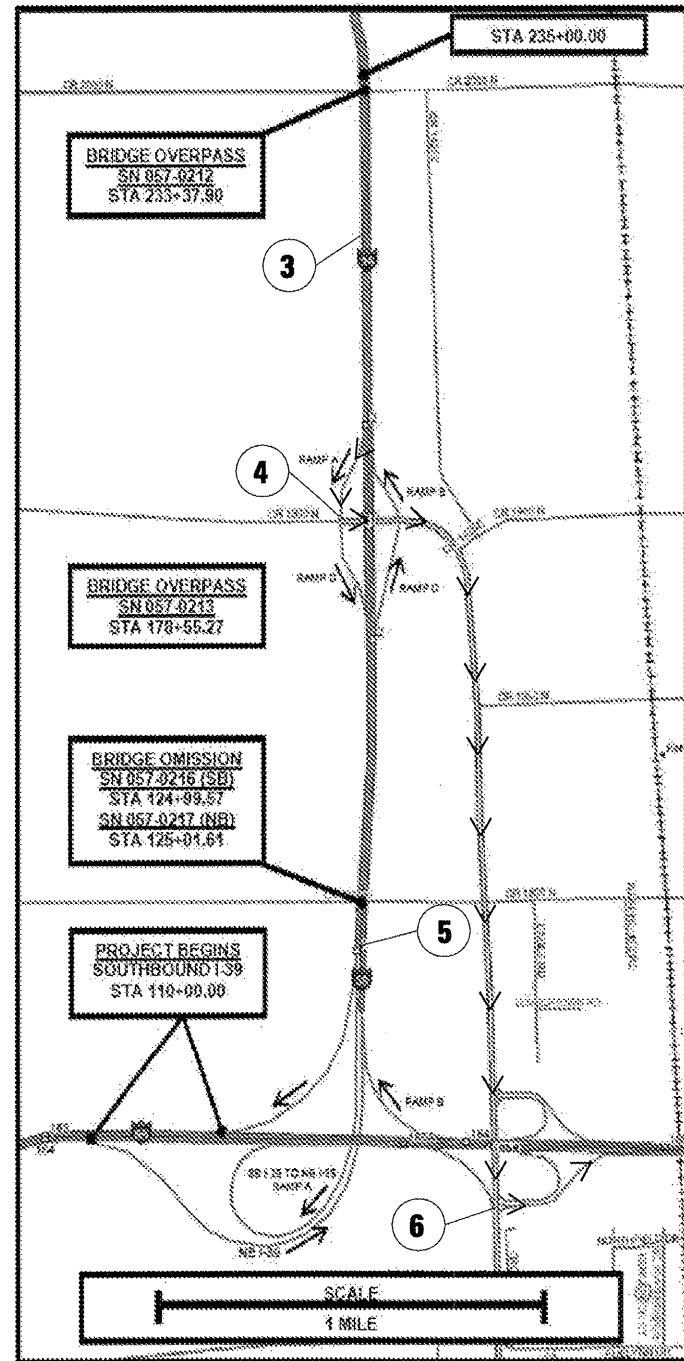
SCALE: SHEET NO. 2 OF 2 SHEETS STA. TO STA.

F.A.I. RTE.	SECTION	COUNTY	TOTAL SHEETS	SHEET NO.
39	57-21	MCLEAN	18	15
CONTRACT NO. 70797				
ILLINOIS FED. AID PROJECT				

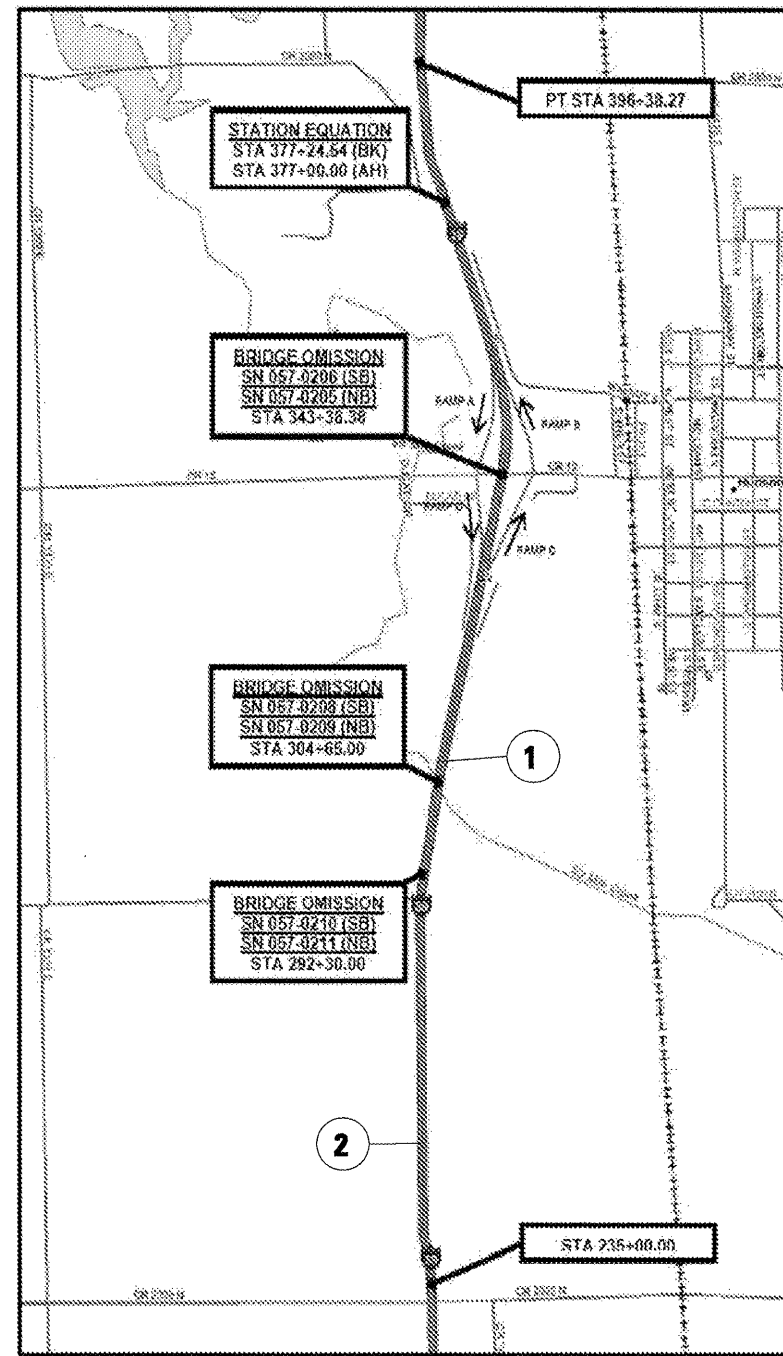
# DETOUR TRAFFIC CONTROL DETAIL FOR S.B. I-39 RAMP A CLOSURE

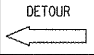
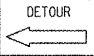
## MESSAGE BOARD AND DETOUR SIGN PLACEMENT

**SOUTH SECTION**  
STA. 41+92.00 TO STA. 235+00.00



**NORTH SECTION**  
STA. 235+00.00 TO STA. 377+24.54



TRAFFIC CONTROL DEVICES	LOCATION	SUGGESTED MESSAGE
1 PERMANENT MESSAGE BOARD (SEE GENERAL NOTE)	APPROX. STA. 305+00 2 MI BEFORE EXIT #2	RAMP CLOSED AHEAD ALL I-55 NORTHBOUND TRAFFIC MUST USE EXIT #2
2 MESSAGE BOARD #1	1 MI BEFORE EXIT #2	I-55 NORTHBOUND TRAFFIC MUST USE EXIT #2
3 MESSAGE BOARD #2	1/4 TO 1/2 MI BEFORE EXIT#2	ALL I-55 NORTHBOUND TRAFFIC MUST EXIT NOW
4 M4-9L DETOUR SIGN #1 	TOP OF EXIT RAMP @ EXIT #2	DETOUR WITH LEFT ARROW SIZE: 30"X24"
5 MESSAGE BOARD #2	AT RAMP "A" TAPER 14 DAYS PRIOR TO RAMP CLOSURE	RAMP TO I-55 NORTHBOUND WILL BE CLOSED ON MO/DAY/YR DETOUR VIA EXIT #2
6 M4-9L DETOUR SIGN #2 	TOP OF EXIT RAMP FOR I-55 NORTHBOUND	DETOUR WITH LEFT ARROW SIZE: 30"X24"

**GENERAL NOTE: CONTRACTOR TO SUPPLY ALL TRAFFIC CONTROL SHOWN ON DETOUR DETAIL.**

**THIS WORK ( FURNISHING, ERECTING, MAINTAINING, AND REMOVAL OF ALL DETOUR TRAFFIC CONTROL. )**

**WILL NOT BE PAID FOR SEPARATELY, BUT SHALL BE INCLUDED IN THE UNIT COST OF THE PAY ITEM " CHANGEABLE MESSAGE SIGN " .**

**ALL DETOUR TRAFFIC CONTROL SUBJECT TO THE DISTRICT 5 TRAFFIC CONTROL SUPERVISOR'S APPROVAL ( CLARK PIPER ).**

**CONTACT CLARK PIPER @ 217-465-7353 OR 217-465-4181.**

**FOR CHANGING THE MESSAGE ON THE PERMANENT MESSAGE BOARD, CONTACT DAVE BURKYBILE @ 217-465-7383 OR 217-465-4181.**

FILE NAME =	USER NAME = bucklesjj	DESIGNED -	REVISED -
ca:\pwwork\FWIDOT\BUCKLESJJ\d0128799.dgn	70797-SHT-COVER.dgn	DRAWN - JJB	REVISED -
	PLOT SCALE = 40,0000' / IN.	CHECKED -	REVISED -
	PLOT DATE = 3/27/2009	DATE - 3-26-09	REVISED -

**STATE OF ILLINOIS  
DEPARTMENT OF TRANSPORTATION**

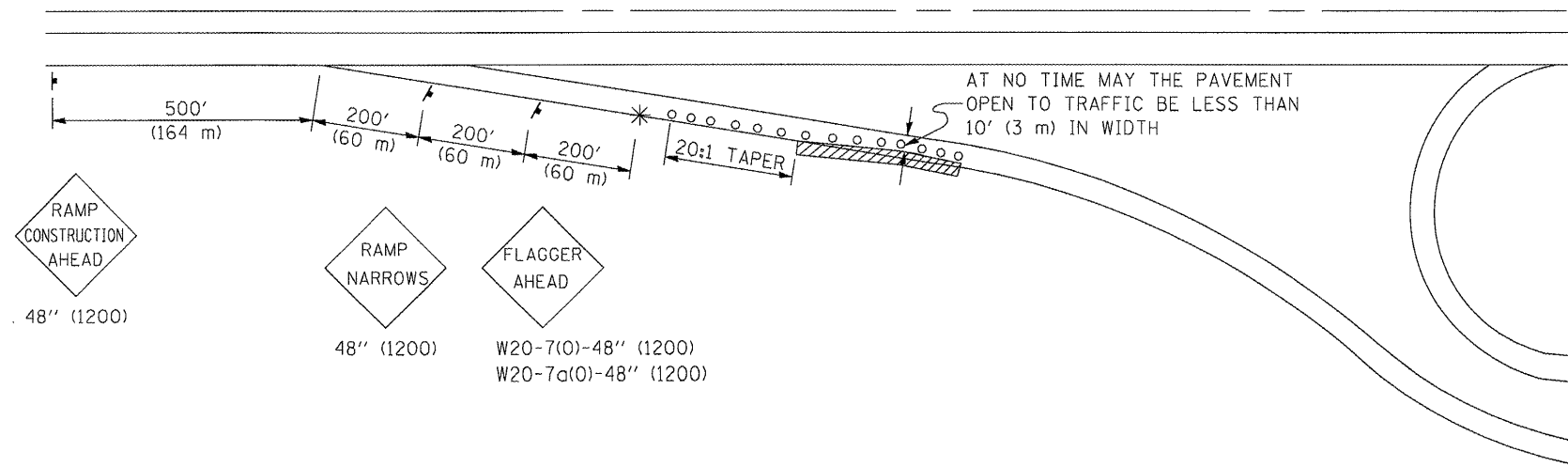
**TRAFFIC CONTROL DETAIL FOR  
SOUTHBOUND RAMP CLOSURE**

SCALE: SHEET NO. OF SHEETS STA. TO STA.

F.A.I. RTE.	SECTION	COUNTY	TOTAL SHEETS	SHEET NO.
39	57-21	MCLEAN	18	16
CONTRACT NO. 70797				
ILLINOIS FED. AID PROJECT				



**APPLICATION NO. 1  
DAY OPERATION ONLY  
PARTIAL RAMP CLOSURE**



**SYMBOLS**

- (APPLICATION NO. 1) TYPE I OR II BARRICADES OR DRUMS @ 50' (15 m) CTS.
- ⊕ (APPLICATION NO. 2) TYPE I OR II BARRICADES OR DRUMS @ 25' (7.5 m) CTS. W/STEADY BURNING LIGHTS
- \* (APPLICATION NO. 1) FLAGGER PLACED AS DIRECTED BY THE ENGINEER
- † SIGN ON PORTABLE OR PERMANENT SUPPORT
- ▨ WORK AREA

**TYPICAL APPLICATIONS**

- PAVEMENT PATCHING
- PIPE UNDERDRAINS
- HMA RESURFACING

**GENERAL NOTES**

CONSTRUCTION OPERATIONS SHALL BE CONFINED TO AN AREA NARROW ENOUGH THAT A MINIMUM OF 10' (3 m) OF PAVEMENT SHALL BE OPEN TO TRAFFIC AT ALL TIMES.

FULL WIDTH PAVEMENT ON THE RAMPS SHALL BE OPEN TO TRAFFIC AT NIGHT.

WHEN NO WORK IS BEING PERFORMED, THE FLAGGER WILL NOT BE REQUIRED. IF THE FLAGGER IS NOT PRESENT, THE FLAGGER SIGNS SHALL BE REMOVED OR COVERED.

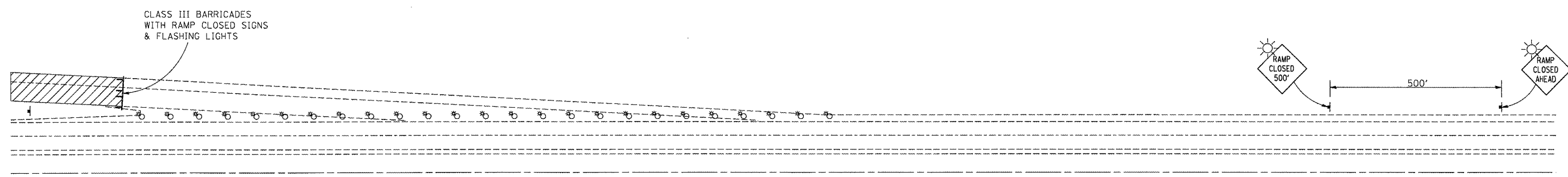
ALL SIGNS SHALL BE POST MOUNTED IF WORK IN THE AREA EXCEEDS FOUR DAYS OF DAYTIME OPERATIONS.

LONGITUDINAL DIMENSIONS MAY BE ADJUSTED SLIGHTLY TO FIT FIELD CONDITIONS.

ALL VEHICLES, EQUIPMENT, WORKERS (EXCEPT FLAGGER) AND THEIR ACTIVITIES ARE RESTRICTED AT ALL TIMES TO ONE SIDE OF THE PAVEMENT UNLESS OTHERWISE AUTHORIZED BY THE DISTRICT ENGINEER.

**Traffic Control for all ramps shall be in accordance with the appropriate application of plan detail TRAFFIC CONTROL FOR RAMPS and will not be paid for separately, but shall be included in the contract lump sum prices for Traffic Control and Protection, Standard 701401 and Traffic Control and Protection, Standard 701406.**

**APPLICATION NO. 2  
RAMP CLOSURE**



**GENERAL NOTES**

STEADY BURN LIGHTS ARE NOT REQUIRED FOR DAYTIME OPERATIONS.

CONTACT THE DISTRICT TRAFFIC OPERATIONS ENGINEER AT 217-465-4181, ONE WEEK PRIOR TO CLOSING THE RAMP.

Note: All dimensions are in INCHES (millimeters) unless otherwise shown.

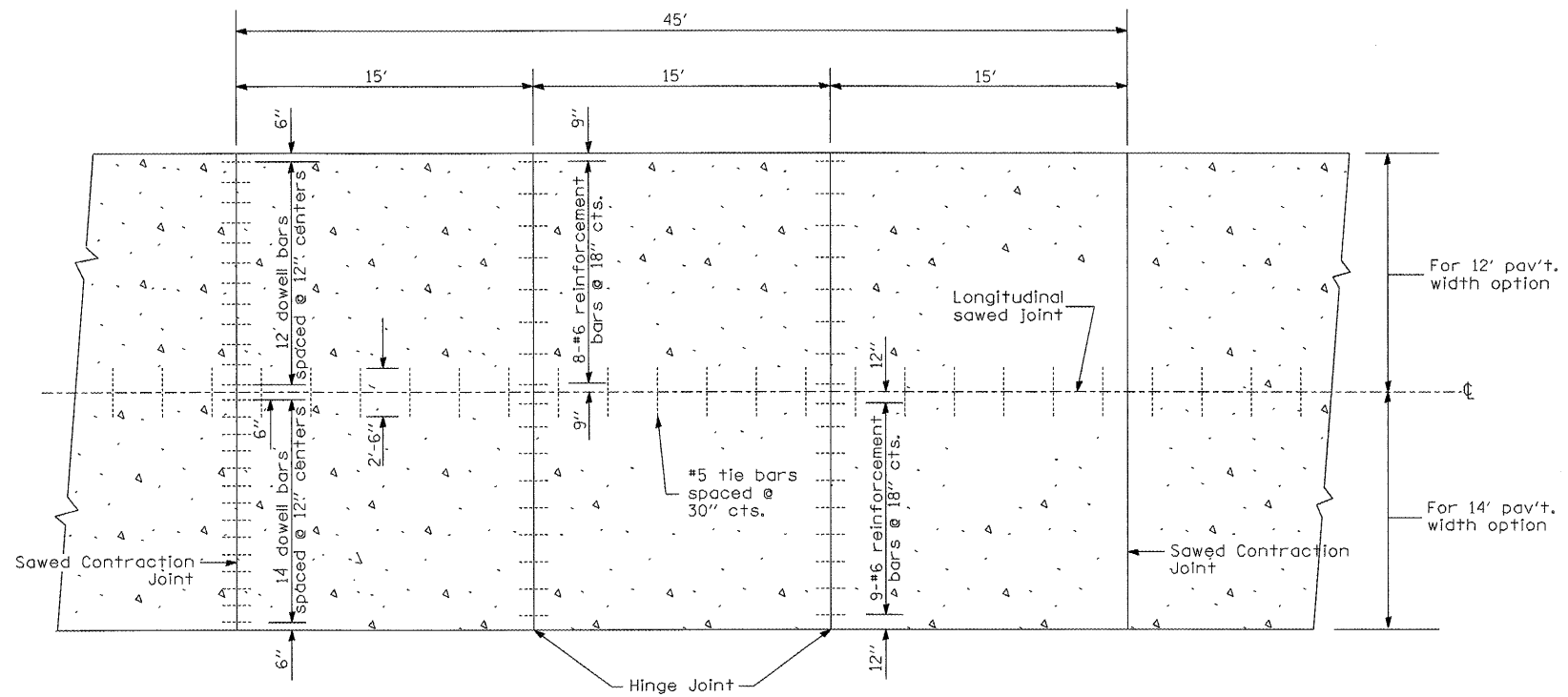
**DISTRICT 5 DETAIL NO. 70103710**

FILE NAME =	USER NAME = bucklesjj	DESIGNED -	REVISED -
ca:\pwwork\p\1001\BUCKLESJJ\d0128799\070797-SHT-DETAILS.dgn		DRAWN -	REVISED -
	PLOT SCALE = 48.0000' / IN.	CHECKED -	REVISED -
	PLOT DATE = 3/27/2009	DATE -	REVISED -

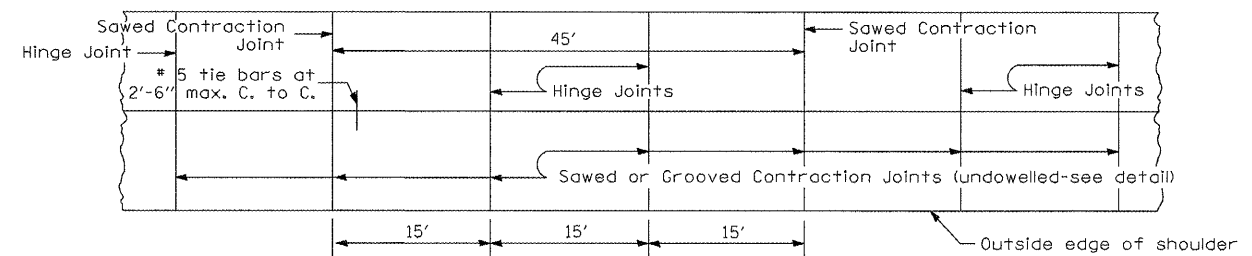
**STATE OF ILLINOIS  
DEPARTMENT OF TRANSPORTATION**

<b>DETAIL OF TRAFFIC CONTROL FOR RAMPS, RAMP CLOSURE, DISTRICT 5 DETAIL NO. 70103710</b>			
SCALE:	SHEET NO.	OF SHEETS	STA. TO STA.

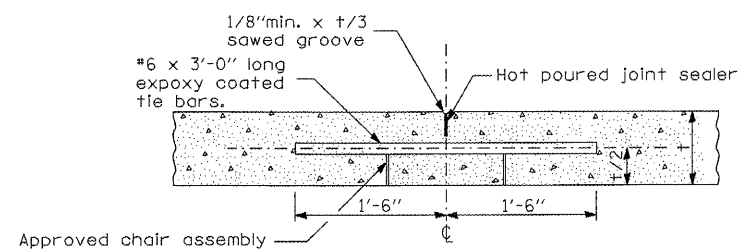
F.A.I. RTE.	SECTION	COUNTY	TOTAL SHEETS	SHEET NO.
39	57-21	MCLEAN	18	17
FED. ROAD DIST. NO. ILLINOIS FED. AID PROJECT			CONTRACT NO. 70797	



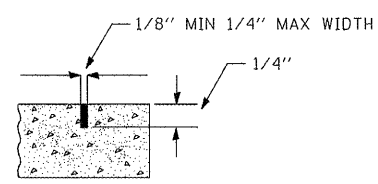
PLAN  
EXISTING JOINTED PORTLAND CEMENT CONCRETE PAVEMENT



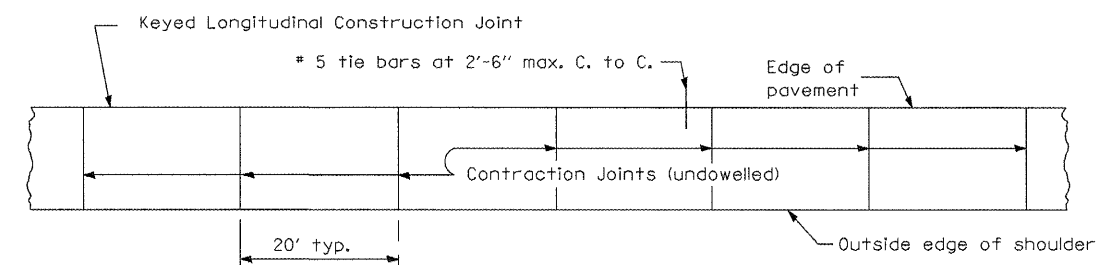
PLAN  
TYPICAL P.C.C. PAVED SHOULDER ADJACENT TO JOINTED PAVEMENT



DETAIL OF HINGE JOINT



DETAIL OF  
Sawed or Grooved  
Contraction Joint  
For  
TYPICAL P.C.C. PAVED SHOULDER



PLAN  
TYPICAL P.C.C. PAVED SHOULDER ADJACENT TO CONTINUOUSLY REINFORCED PAVEMENT

GENERAL NOTE

#4 tie bars may be used when the pavement is less than 9" thick.

FILE NAME =	USER NAME = bucklesjj	DESIGNED -	REVISED -
c:\pwwork\pwwork\BUCKLESJJ\d0126799\070797-SHT-DETAILS.dgn		DRAWN -	REVISED -
PLOT SCALE = 48.0000' / IN.		CHECKED -	REVISED -
PLOT DATE = 3/27/2009		DATE -	REVISED -

STATE OF ILLINOIS  
DEPARTMENT OF TRANSPORTATION

DETAILS OF EXISTING JOINTED P.C.C. PAVEMENT(HINGE-JOINT)  
AND ADJACENT P.C.C. SHOULDER

SCALE: SHEET NO. OF SHEETS STA. TO STA.

F.A.I. RTE.	SECTION	COUNTY	TOTAL SHEETS	SHEET NO.
39	57-21	MCLEAN	18	18
FED. ROAD DIST. NO.			ILLINOIS FED. AID PROJECT	
			CONTRACT NO. 70797	