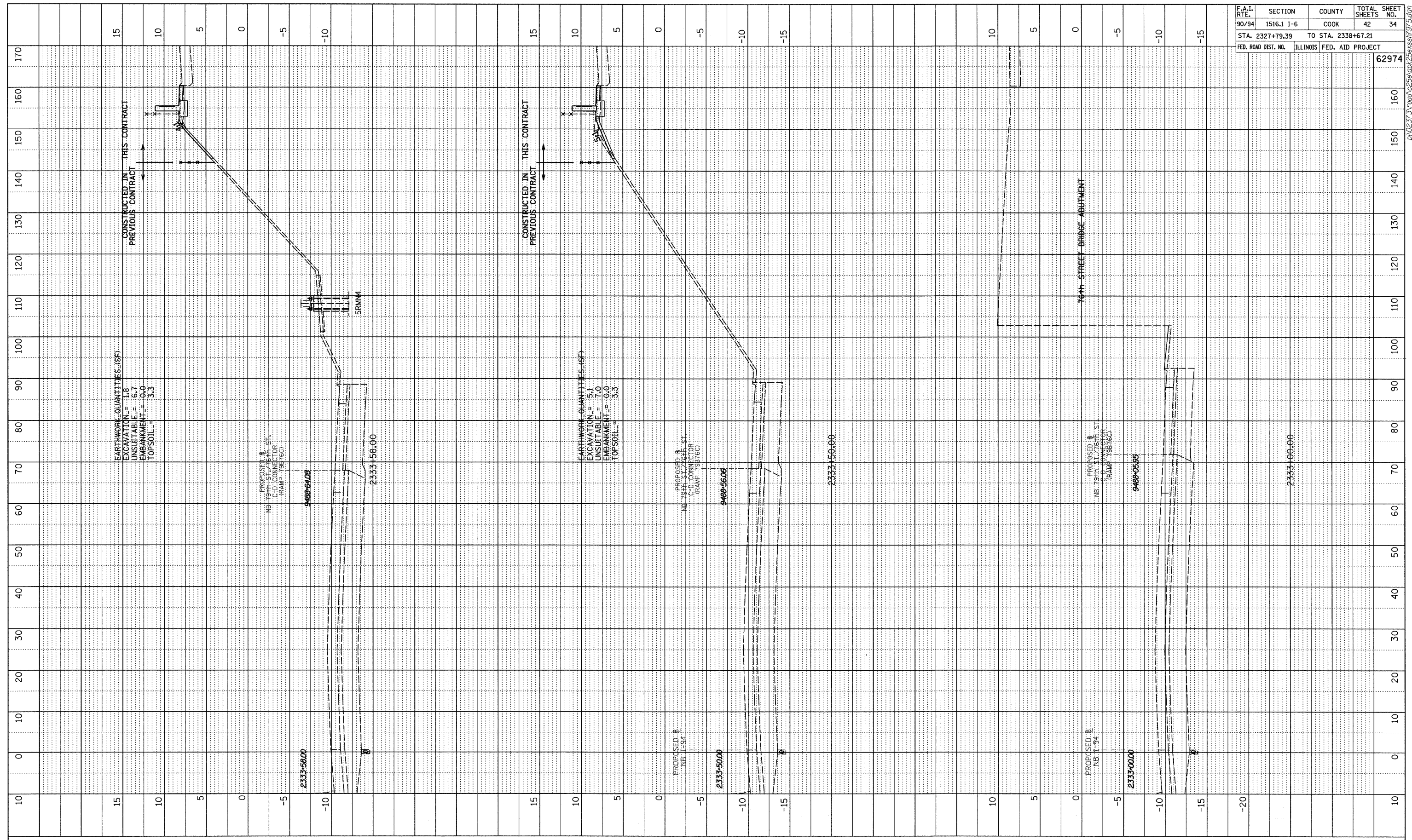


PROFILE	SURVEYED	BY	DATE
NOTE BOOK	CHECKED		
NO.	STRUCTURE NOTATION	CRFD	



F.A.I. RTE.	SECTION	COUNTY	TOTAL SHEETS	SHEET NO.
90/94	1516.1 I-6	COOK	42	34
STA. 2327+79.39 TO STA. 2338+67.21				
FED. ROAD DIST. NO.	ILLINOIS	FED. AID PROJECT		
				62974

EARTHWORK QUANTITIES (SF)  
 EXCAVATION = 1.8  
 UNSUITABLE = 6.7  
 EMBANKMENT = 0.0  
 TOP SOIL = 3.3

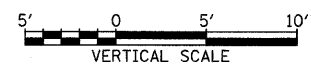
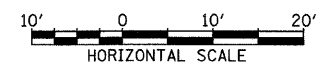
EARTHWORK QUANTITIES (SF)  
 EXCAVATION = 5.1  
 UNSUITABLE = 7.0  
 EMBANKMENT = 0.0  
 TOP SOIL = 3.3

PROPOSED NB 79TH ST / 76TH ST  
 C/D CONNECTOR (RAMP 78B76C)

9+68-05.95

2333+66.00

TYLIN INTERNATIONAL



NB I-94 (DAN RYAN EXPRESSWAY)  
 STA. 2333+00 TO STA. 2333+58