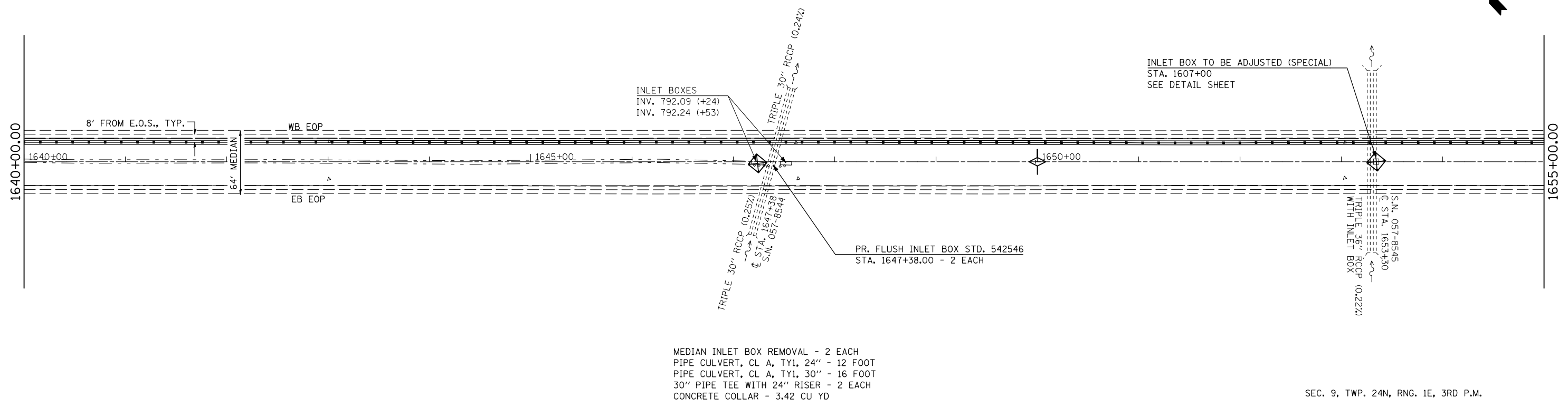
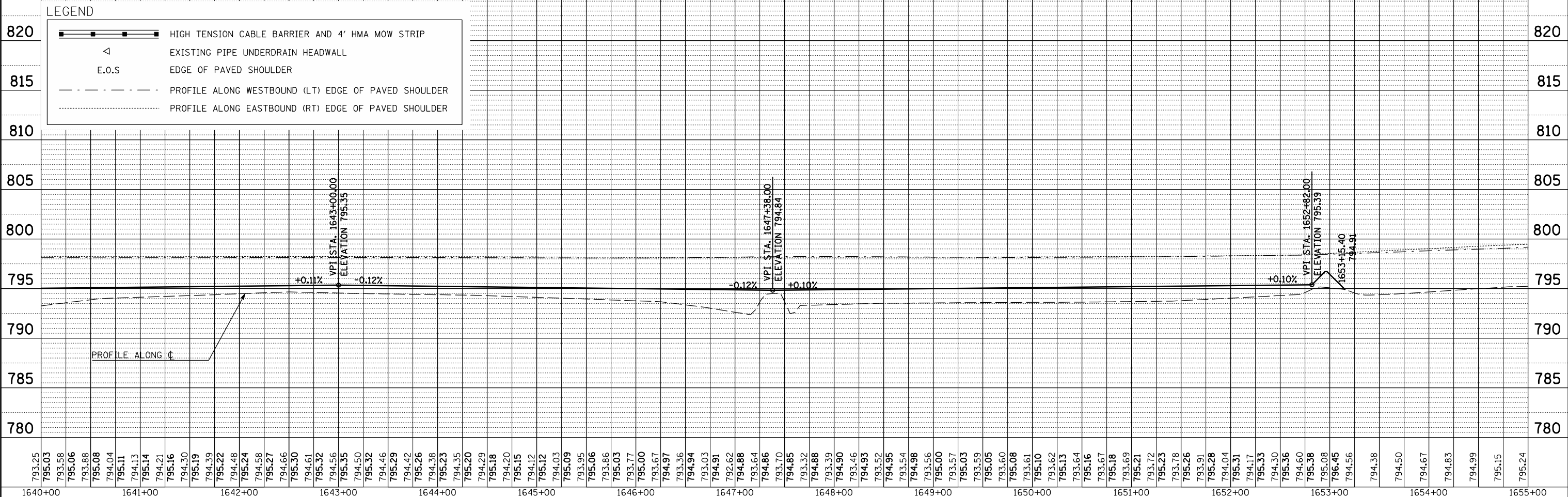


PLAN	SURVEYED	BY	DATE
	PLOTTED		
	NOTED		
	CHECKED		
	FILE NAME		



MEDIAN INLET BOX REMOVAL - 2 EACH
 PIPE CULVERT, CL A, TY1, 24" - 12 FOOT
 PIPE CULVERT, CL A, TY1, 30" - 16 FOOT
 30" PIPE TEE WITH 24" RISER - 2 EACH
 CONCRETE COLLAR - 3.42 CU YD

PROFILE	SURVEYED	BY	DATE
	PLOTTED		
	NOTED		
	CHECKED		
	STRUCTURE		
	NOTATION		



FILE NAME =	USER NAME = keyarb	DESIGNED -	REVISED -	STATE OF ILLINOIS DEPARTMENT OF TRANSPORTATION	PLAN AND PROFILE				F.A.I. RTE. 74	SECTION FY11 HSIP-5	COUNTY MCLEAN	TOTAL SHEETS 101	SHEET NO. 15
ct:\pwwork\pwwork\keyarb\d0261049\0570927	shht-plnpr f_50.dgn	DRAWN -	REVISED -		SCALE:	SHEET NO.	OF SHEETS	STA.	TO STA.	CONTRACT NO. 70927			
		CHECKED -	REVISED -		ILLINOIS FED. AID PROJECT								
		DATE -	REVISED -										