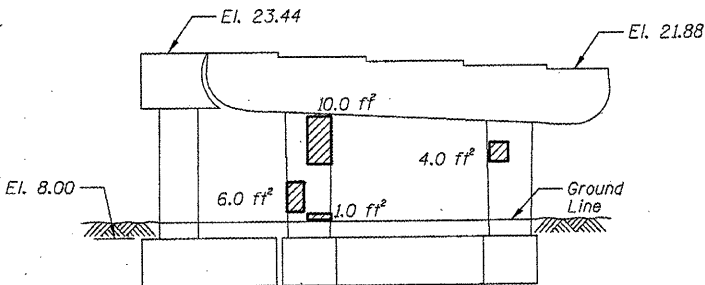
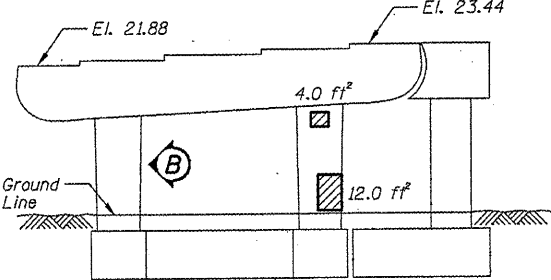


ROUTE	SECTION	COUNTY	TOTAL SHEETS	SHEET NUMBER
FAI 90/94	2011-027-I	COOK	87	35

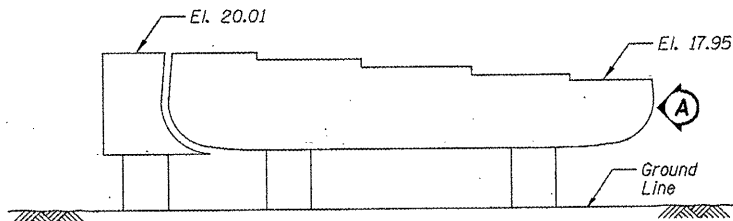
CONTRACT NO. 60P27



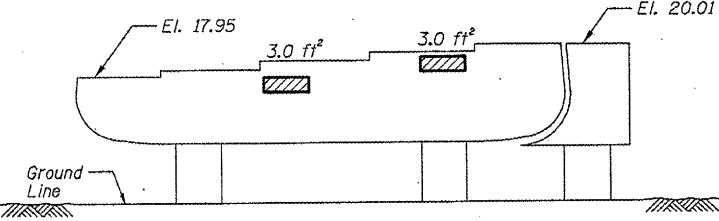
PIER D-12 - SOUTH ELEVATION
(Looking North)



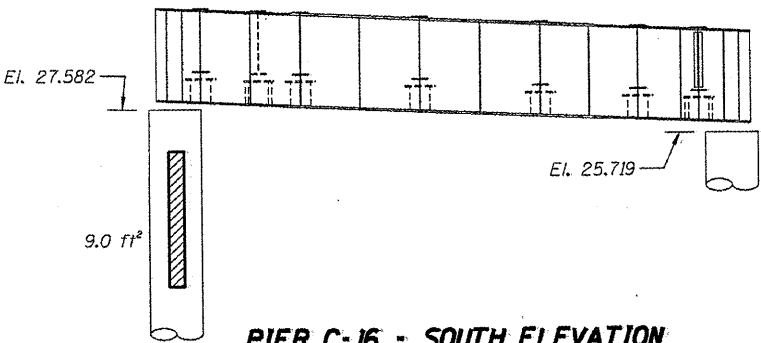
PIER D-12 - NORTH ELEVATION
(Looking South)



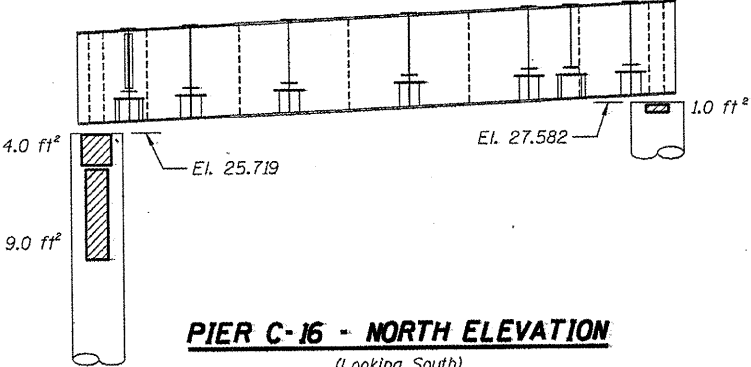
PIER D-13 - SOUTH ELEVATION
(Looking North)



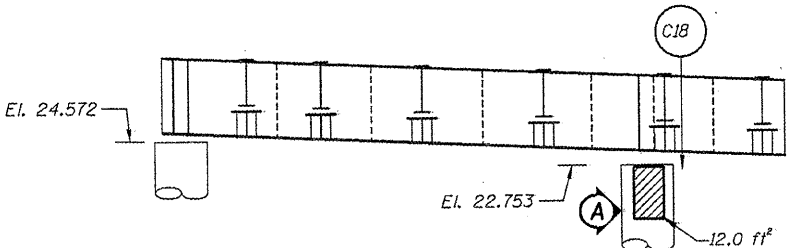
PIER D-13 - NORTH ELEVATION
(Looking South)



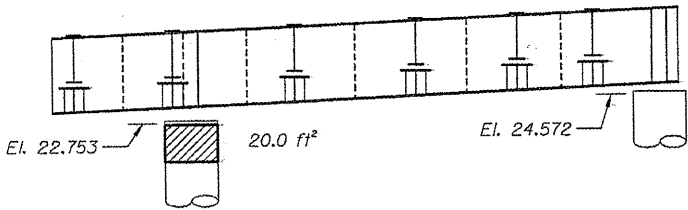
PIER C-16 - SOUTH ELEVATION
(Looking North)



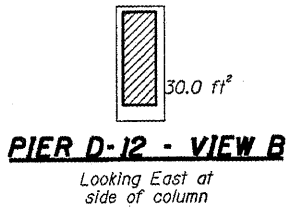
PIER C-16 - NORTH ELEVATION
(Looking South)



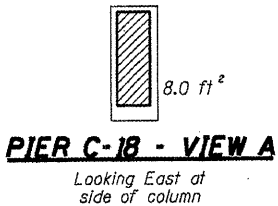
PIER C-18 - SOUTH ELEVATION
(Looking North)



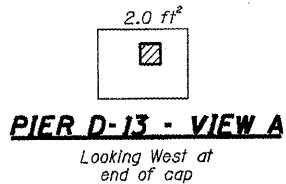
PIER C-18 - NORTH ELEVATION
(Looking South)



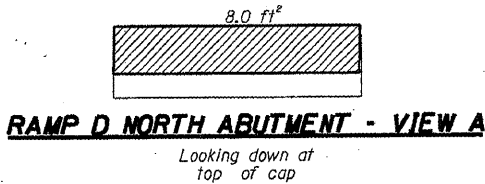
PIER D-12 - VIEW B



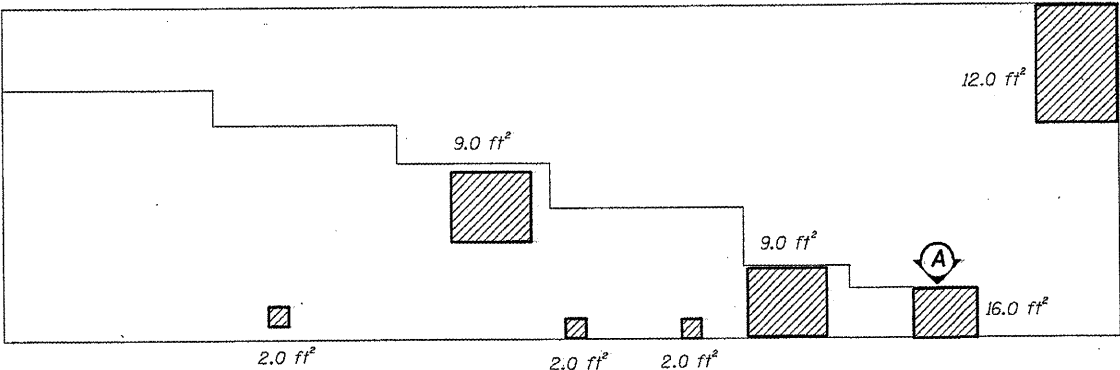
PIER C-18 - VIEW A



PIER D-13 - VIEW A



RAMP D NORTH ABUTMENT - VIEW A



RAMP D - NORTH ABUTMENT
Looking North

BILL OF MATERIAL

ITEM	UNIT	QUANTITY
Structural Repair of Concrete (Depth equal to or less than 5")	SQ. FT.	198.0
Temporary Shoring and Cribbing	EACH	1

REACTION TABLE

PIER C18	SPAN C17
Reaction DL	34.5 kips
Reaction LL	29.0 kips
Reaction Impact	6.6 kips
Reaction Total	70.1 kips

▨ - Structural Repair of Concrete (Depth equal to or less than 5")

Beam # - Temporary Shoring and Cribbing

See Sheet 20 for location of beam.

ILLINOIS DEPARTMENT OF
TRANSPORTATION

I-90/94 (DAN RYAN EXPRESSWAY)
SUBSTRUCTURE REPAIRS
SN 016-1112

PIERS D-12, D-13, C-16, C-18, & N ABUT.