

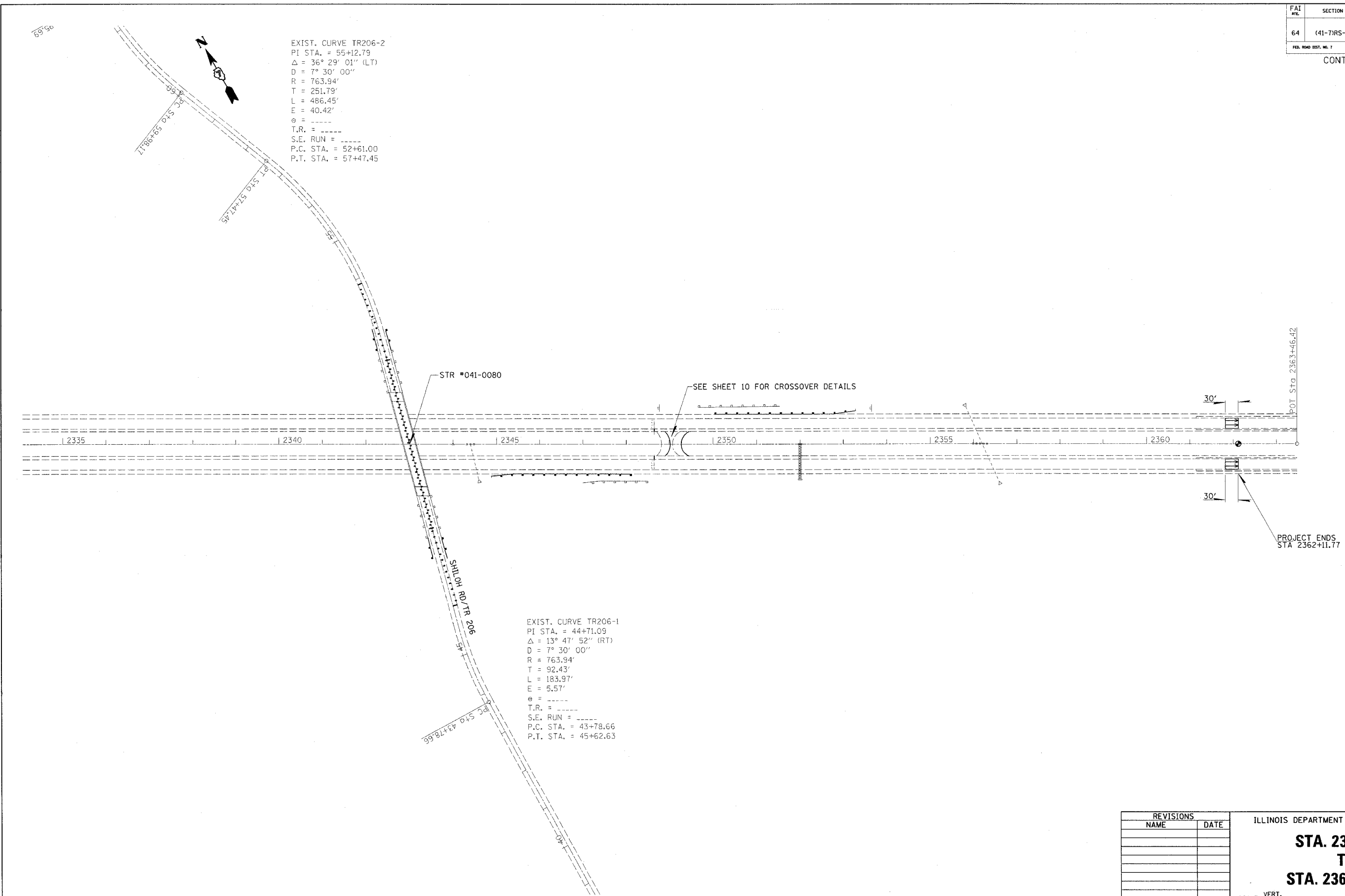
teesleyck  
3/31/2005  
c:\projects\94905\d04201pa.dgn  
PS 10

FAI SITE	SECTION	COUNTY	TOTAL SHEETS	SHEET NO.
64	(41-7)RS-1	JEFFERSON	48	24

FED. ROAD DIST. NO. 7 ILLINOIS FED. AID PROJECT NO.  
CONTRACT NO. 94905

EXIST. CURVE TR206-2  
PI STA. = 55+12.79  
 $\Delta = 36^\circ 29' 01''$  (LT)  
D = 7° 30' 00"  
R = 763.94'  
T = 251.79'  
L = 486.45'  
E = 40.42'  
e = -----  
T.R. = -----  
S.E. RUN = -----  
P.C. STA. = 52+61.00  
P.T. STA. = 57+47.45

EXIST. CURVE TR206-1  
PI STA. = 44+71.09  
 $\Delta = 13^\circ 47' 52''$  (RT)  
D = 7° 30' 00"  
R = 763.94'  
T = 92.43'  
L = 183.97'  
E = 5.57'  
e = -----  
T.R. = -----  
S.E. RUN = -----  
P.C. STA. = 43+78.66  
P.T. STA. = 45+62.63



REVISIONS	
NAME	DATE

ILLINOIS DEPARTMENT OF TRANSPORTATION  
**STA. 2335 + 00  
TO  
STA. 2362 + 11.77**  
SCALE: VERT. \_\_\_\_\_  
HORIZ. \_\_\_\_\_  
DATE \_\_\_\_\_ DRAWN BY \_\_\_\_\_  
CHECKED BY \_\_\_\_\_