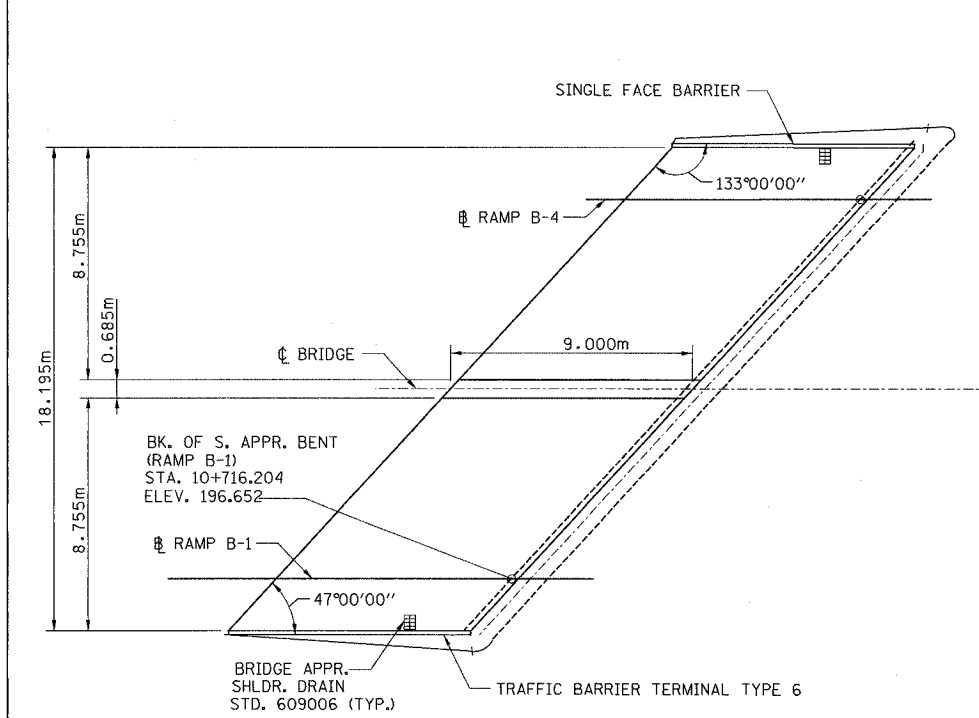
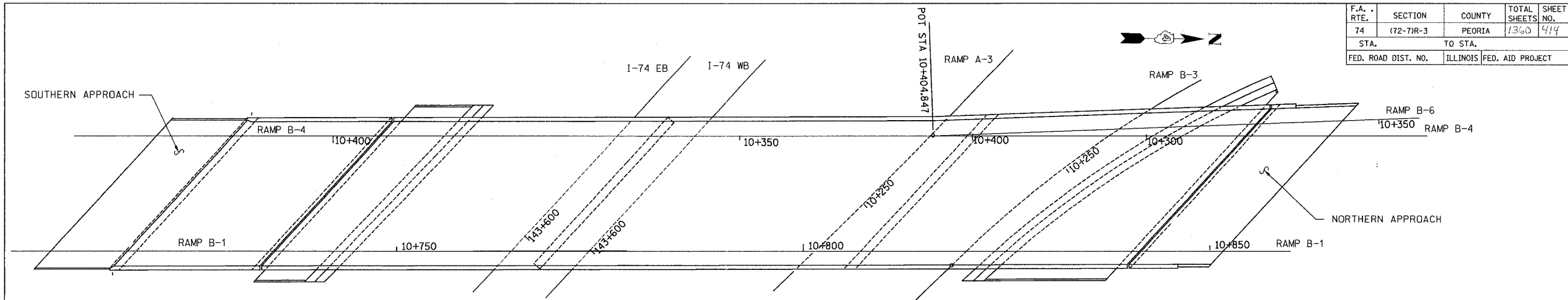
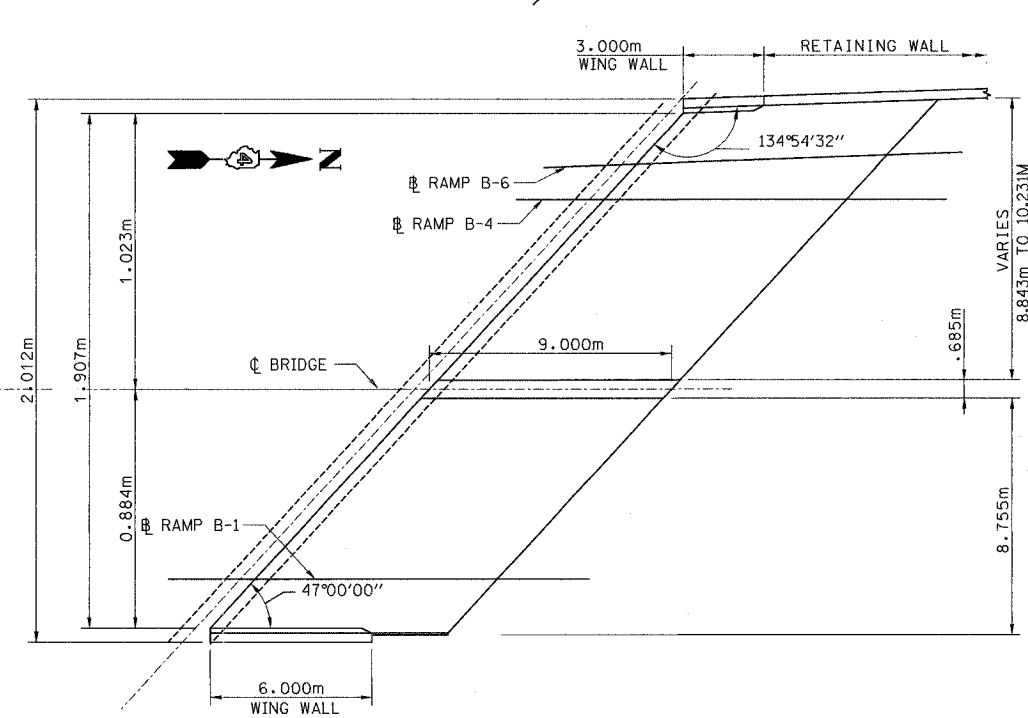


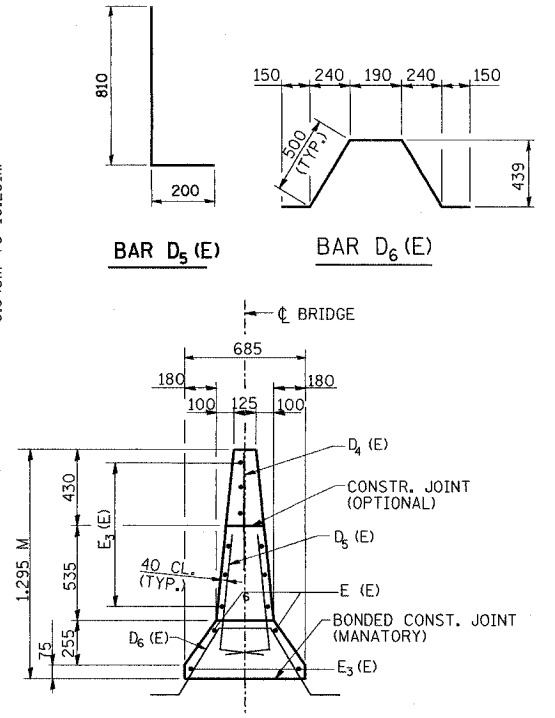
|                     |            |                           |              |           |
|---------------------|------------|---------------------------|--------------|-----------|
| F.A. RTE.           | SECTION    | COUNTY                    | TOTAL SHEETS | SHEET NO. |
| 74                  | (72-71R-3) | PEORIA                    | 1360         | 414       |
| STA.                |            | TO STA.                   |              |           |
| FED. ROAD DIST. NO. |            | ILLINOIS FED. AID PROJECT |              |           |



SLAB 1 SOUTH WEST  
NTS



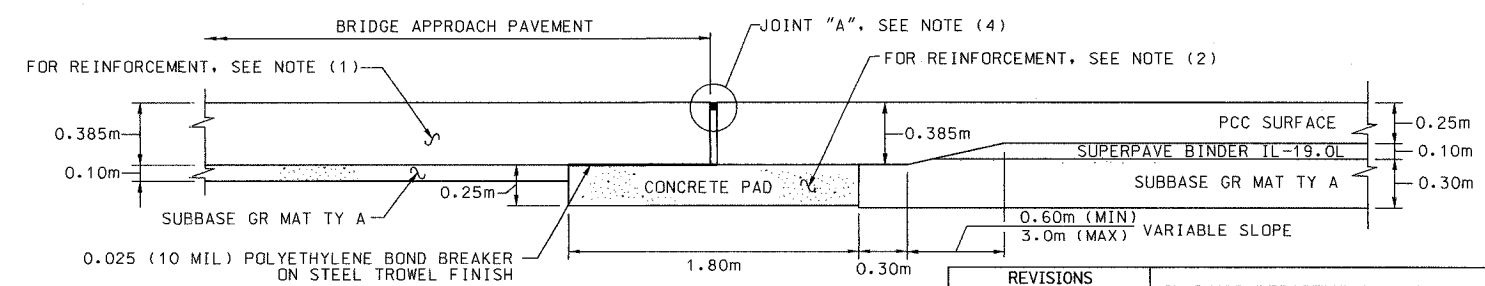
SLAB 1 NORTH WEST  
NTS



SECTION THRU MEDIAN BARRIER

- NOTES:
- FOR APPROACH SLAB REINFORCEMENT SEE SHT. 1 & 3 OF STANDARD 420401, "BRIDGE APPROACH PAVEMENT".
  - FOR CONCRETE PAD REINFORCEMENT SEE SEC G-G RIGID PAVEMENT OF STANDARD 420401, "BRIDGE APPROACH PAVEMENT".
  - REINFORCEMENT BARS DESIGNATED (E) SHALL BE EPOXY COATED.
  - FOR JOINT "A" DETAIL, SEE PROJECT STANDARD 420402-174, "DETAIL A".
  - COST OF REINFORCEMENT AND FLARED COIL LOOPS SHALL BE INCLUDED IN THE SQUARE METER COST OF BRIDGE APPROACH PAVEMENT.

| PAY ITEM CODE | ITEM                               | UNIT | QUANTITY |
|---------------|------------------------------------|------|----------|
| M4205050      | BRIDGE APPROACH PAVEMENT (SPECIAL) | SQ M | 334.5    |



SECTION C-C  
NTS

| REVISIONS | NAME | DATE |
|-----------|------|------|
|           |      |      |
|           |      |      |
|           |      |      |
|           |      |      |

ILLINOIS DEPARTMENT OF TRANSPORTATION  
 BRIDGE APPROACH PAVEMENT  
 FAI ROUTE 74 (I-74) (WB)  
 RAMPS B-1/B-4 OVER I-74  
 DRAWN BY CADD  
 CHECKED BY MWP  
 DATE 11/12/04

